

Expertise

Protocol number: 45786087
Order No. / Reference: 26368031
Inspection date: 2 Jun 2026

Manufacturer: Mercedes-Benz

Model: A 200 d 8G-DCT Progressive Advanced

VIN: W1K3F1CB7RJ448652



Vehicle details

Manufacturer / Type / Model / Equipment

Mercedes-Benz A 200 d 8G-DCT Progressive Advanced

Vehicle Identification number W1K3F1CB7RJ448652

Mileage (Read) 74,200 km

First registration 26 Feb 2024

Number of holders 1

Next periodical technical inspection 02/2027

(Report not on hand)

Power / Engine displacement 110 kw / 1,950 ccm

Fuel type / Cylinder Diesel / 4

Gearbox / Number of gears Automatic / 8

Type of drive Front drive

Type of vehicle Saloon car

Colour / colour code Kosmoschwarz Metallic

Doors / Seats 5 / 5

Upholstery type Part leather

Colour of upholstery Black

Re-import no

readiness to drive Roadworthy



Vehicle details			
Maintenance booklet / proof	Non-existent	Next maintenance in	38 Tag(e)
Last service on / at	07/2025 at 50,824 km		
Key is / should be	2 / 2	FZG documents	ZB#2 (B) was available (copy), ZB#1 (S) was not available.
		Letter No.	HB185524
Previous damage / Accident	None detectable	Repainting	None detectable
Inspection conditions	sufficient	Lifting equipment / pit	No
Test drive	Not performed	Engine function test	Performed
readiness to drive	Roadworthy		
Manufacturer key number/ type code number	2222 / AJH 00122		
Emission standard	EURO6;WLTP;AP;PI/CI; M, N1 I	fine dust sticker	
Permitted total weight	2,010 kg	Empty weight	

Tyres

Mounted tyres				
#	Tyre size	Type of tyre	Manufacturer	Tread depth
1)	205/55 R17 91W	Summer tyres on Light alloy	Bridgestone	5mm / 5mm
2)	205/55 R17 91W	Summer tyres on Light alloy	Continental	4mm / 4mm
Additional tyres				
#	Tyre size	Type of tyre	Manufacturer	Tread depth
1)	205/60 R16 92H	Winter tyres on Light alloy	Michelin	6mm / 6mm
2)	205/60 R16 92H	Winter tyres on Light alloy	Michelin	5mm / 5mm
Replacement				
Typ	Tyre size	Type of tyre	Manufacturer	Tread depth
	Tirefit	Expiration date 04/2029		

Legend: Tread depth information for the left tire is listed first, for the right tire it is listed second on the axle in the direction of travel.

TÜV SÜD Auto Partner GmbH
Wiesenring 2
04159 Leipzig

Inspection location
Hartmann Fleet Professionals GmbH
Leerenstraße 25
29683 Bad Fallingbommel



Equipment



Standard equipment

- Storage compartment in center console with roller blind
- Adaptive High Beam Assist (Whenever the Adaptive High Beam Assist does not detect any vehicles ahead or oncoming traffic, it switches on the high beam.)
- Airbag: Driver and front passenger
- Airbag: Kneebag for driver
- Airbag: Sidebag for driver and front passenger (combined thorax/pelvisbag)
- Airbag: Windowbag for driver and front passenger
- Traction control (ASR)
- ATTENTION ASSIST (the attention assistant) (can detect typical signs of fatigue through driver behavior and warn the driver of increasing fatigue or inattentiveness)
- Outdoor temperature display
- Basic services (breakdown management, maintenance management, accident management, telediagnosis, remote vehicle diagnostics)
- Diesel particulate filter
- Double cupholder at the front (Removing the double cupholder expands the interior to provide a large storage area.)
- Third brake light
- Door sills with the lettering "Mercedes-Benz"
- Electronic Stability Program (ESP)
- Driving light assistant
- Chassis: Comfort chassis with lowering (with this chassis variant the body is lowered by 15 mm)
- Electric windows (4-way)
- Luggage net on driver and passenger seatbacks
- Speed Limit Assistant (Uses image recognition via camera to determine the maximum permissible speed - traffic signs are displayed symbolically in the instrument cluster / optionally in the head-up display, including restrictive supplementary signs such as speed limits in wet conditions or speed limits for trucks only - the driver can manually accept recognized and suggested speed limits via the steering wheel controls - visual and audible warnings for exceeding the maximum permissible speed are adjustable)
- Mechanical child safety lock (for doors and electric child safety lock for windows)
- Communication module (LTE) for using Mercedes me connect services (offers you a clear increase in comfort and safety. It constantly connects the vehicle to the internet so you can use helpful services like Mercedes me connect Live Traffic Information. Two mobile antennas and an LTE-enabled SIM card ensure a fast connection.)
- Rear headrests (3)
- Front headrests are height-adjustable
- ABS - Anti-lock Braking System
- Adaptive brake light flashing
- Airbag: Automatic passenger airbag deactivation (The system automatically deactivates the passenger airbag as soon as it detects a rear-facing child seat or registers that the passenger seat is unoccupied. A transponder in the child seat is not necessary. If it detects that an adult is taking the seat, the airbag is automatically activated, reducing the risk of incorrect operation.)
- Foldable armrest in the center console for driver and front passenger
- Heated exterior mirrors on the left and right, electrically adjustable from the inside (with aspherically curved mirror glass and integrated turn signal light)
- Brake assist, active (This assistant can help avoid collisions with vehicles ahead, stationary vehicles, oncoming traffic when turning, and moving pedestrians and cyclists. In addition to distance and collision warnings, the system primarily offers situation-appropriate brake boosting – up to and including autonomous emergency braking.)
- ECO start/stop function (Automatic engine shutdown when stationary, for example in traffic jams or at traffic lights, reduces fuel consumption, lowers emissions and saves fuel costs. The ECO start/stop function works particularly effectively, quickly and quietly.)
- Vehicle key with chrome decorative frame
- Velour floor mats (black with decorative stitching in the respective interior color)
- Transmission: 8G-DCT automatic (8-speed dual-clutch transmission consisting of two sub-transmissions, each with its own clutch; 8 forward gears and 1 reverse gear; DIRECT SELECT selector lever on the steering wheel; High-quality steering wheel shift paddles - left for downshifting and right for upshifting)
- rear window wiper
- Heated rear window
- Interior headliner fabric crystal grey
- KEYLESS-GO start function
- THERMATIC automatic climate control (1-zone climate control, automatically controlled air distribution, recirculation function, tunnel function in conjunction with navigation system, fine dust filter). Automatic tunnel deactivation in conjunction with activated navigation. It detects tunnel entrances, interrupts the fresh air supply and closes the side windows or the panoramic sunroof. Personalization adjusts the heating, air conditioning and airflow for different driver profiles.)
- Paint finish: Solid
- Steering wheel: Multifunction sports steering wheel in leather (Sporty steering wheel in 3-spoke design, leather finish, steering wheel shift paddles (428), black grained, control via touch control panels: Left: Instrument display, cruise control and limiter or Active Distance Assist DISTRONIC; Right: MBUX multimedia system (e.g. audio volume and track selection, telephony and navigation), touch sensitivity adjustable via media display)



- LED High Performance headlights (low beam with LED projection technology, high beam with LED reflection technology, daytime running lights, position lights and direction indicators in LED technology, adaptive full-LED taillights with automatic adjustment of light intensity to the surroundings)
- Steering: Direct steering (with variable steering ratio)
- Mercedes-Benz Emergency Call System (The Mercedes-Benz Emergency Call System can provide a crucial time advantage in an emergency. A communication module with its own SIM card automatically triggers an emergency call via crash sensors when an airbag or seatbelt pretensioner is deployed, thus reducing the time until emergency services arrive. The emergency call can also be triggered manually to organize assistance. In this case, the vehicle's position and direction of travel are also transmitted.)
- Package: Light and Sight Package (Overhead control unit "4 light stones" (including glasses compartment), Interior light/reading light rear in mounting plate (rear/left/right), Touchpad lighting (front), Reading lights (front/left/right), Console ambient light, Make-up lights (front/left/right), Signal and ambient light, Exit signal light (front/left/right), Handle recess/pull handle lighting (front/rear/left/right), Footwell lighting (front/left/right), Cupholder/storage compartment lighting, Spontaneous storage compartment lighting)
- Package: Mirror package (interior and exterior mirrors on the driver's side automatically dimming - exterior mirrors left and right electrically folding)
- Upholstery: ARTICO leatherette/Bertrix fabric
- Radio accessories: Digital radio (DAB) (for the DAB, DMB and DAB+ standards)
- Radio accessories: USB interface in the storage compartment & 2 USB interfaces in the rear center console
- Radio: MBUX multimedia system (with two (17.78 cm) 7" touchscreen displays - with a resolution of 960x540 pixels, touch control buttons on the steering wheel, radio (FM/AM), USB interface in the center console under the armrest, Bluetooth telephony with contact transfer and audio streaming of music files, display of vehicle functions (driver assistance systems, driving programs and vehicle settings), favorites storage, smartphone-related voice control - activated by long press on the voice button on the steering wheel)
- Windscreen wipers with rain sensor
- Crosswind Assist (In strong, gusty crosswinds, the system can help the driver stay in their lane. Through targeted braking interventions, the vehicle experiences a significantly reduced lane drift.)
- Seats: 4-way lumbar support (Four settings are possible: higher, lower, weaker or stronger.)
- Seats: Comfort seats
- Seats: Heated seats for driver and front passenger (The intensity can be selected in three levels. Intelligent and comfortable: The seat heating switches off automatically.)
- Power outlet: 12V connection
- Cruise control (with variable speed limiter)
- TIREFIT with tire inflation compressor
- Navigation: MBUX Navigation Premium (hard drive navigation, high-resolution navigation with satellite view, live traffic information and Car-to-X communication, fast online route calculation, trailer route planner takes into account known restrictions for towing, Send2Car function, map data updates via Mercedes me connect with automatic over-the-air update, via USB stick, at a Mercedes-Benz dealer, navigation services such as local search (POI), online search, displays (weather, etc.))
- Package: Parking package with reversing camera (including Active Parking Assist with PARKTRONIC - reversing camera. This assistant can help you with various tasks related to the parking process: The system assists with signaling, steering, accelerating, braking and changing gears.)
- Package: Seating comfort (height adjustment for passenger seat - seat cushion tilt adjustment for driver and passenger seats - seat cushion depth adjustment for improved seating comfort through a 60 mm wider thigh support area - specific seat design)
- Package: USB Package Plus (2 USB-C ports in the front storage compartment, fast charging and suitable for data transfer - 2 USB-C ports under the center armrest, fast charging and suitable for data transfer - 2 USB-C ports in the rear center console, fast charging)
- Radio: Extended MBUX functions (Personal profiles - Predictive functions - Wi-Fi hotspot and internet radio - Offboard voice control)
- Radio accessories: Central Media Display
- Tire pressure monitoring system (continuously monitors the inflation pressure of all four tires)
- Remote Services (Communication module - Mercedes me services: -Programming of auxiliary heating/ventilation: -Remote door locking and unlocking -Sunroof/windows with remote locking and opening including ventilation function -Personalization -Vehicle location -Vehicle tracking -Geographic vehicle monitoring -Parking service monitoring -Find function (Remote Vehicle Finder))
- A-Class safety belts (3-point safety belts including mechanical belt height adjustment - pyrotechnic belt force limiter and belt tensioner for driver and front passenger - pyrotechnic belt tensioner in the rear outer seats)
- Seats: Rear seat backrests foldable 40/20/40 split (If you only fold down the middle segment for longer items, the two outer seats remain fully usable.)
- Lane Keeping Assist, active (If you unintentionally cross a dashed or solid line, the system can warn you by vibrating the steering wheel. In the case of a solid line, or if the lane behind a dashed line is detected as occupied, the system can also intervene by applying the brakes on one side.)
- Touchpad (The touchpad lets you control the multimedia system's display like a smartphone. Easily move or zoom content using multi-finger gestures. Haptic feedback accompanies every input. The touchpad recognizes your handwriting if you want to enter addresses or phone numbers silently.)
- Central locking (with interior switch, automatic locking (can be deactivated) and crash sensor with emergency opening)



- Pre-installation for digital key handover (You can also unlock your vehicle remotely via the mobile application. Only then will a stored key be activated.)
- High-visibility vest for drivers
- Electronic immobilizer
- Heat-insulating glass, green all around (rear window single-pane safety glass (ESG))
- Decorative elements in dark carbon look

Extra equipment

- Airbag: Side airbags in the rear
- Black fabric headliner
- GUARD 360° Vehicle Protection Plus (Break-in and theft warning - Towing protection with visual and audible warning upon detected change in position - Audible alarm - Interior monitoring (triggers upon movement inside the vehicle) - Assistance with vehicle theft (theft assistance), free for 3 years from activation - Emergency key deactivation, free for 3 years from activation - GUARD 360° label on the front side windows - Collision detection, free for 3 years from activation, additionally with camera images in conjunction with 360°)
- Type designation removed from trunk lid
- Upholstery: ARTICO leatherette/fabric
- Wheels: Complete winter wheel sets fitted at the factory

- Fully digital instrument display (Experience the full range of digital display options. The large, high-resolution 10.25" display can be individually configured – for example, classically with speedometer on the left and tachometer on the right.)
- Package: Winter package (heated steering wheel - heated windshield washer system)
- Package: Winter Package Plus with 40.6 cm (16") winter complete wheels (Winter Package - 40.6 cm (16") multi-spoke light alloy wheels, aerodynamically optimized, painted in high-gloss black and polished with 205/60 R16 tires on 6.5J x 16 ET44 rims)
- Paint finish: Metallic
- Towbar with ESP trailer stabilization (Easily and conveniently lock and unlock the ball neck at the touch of a button.)

Brief expert findings

Documents submitted	At the time of the inspection, the vehicle registration certificate Part 2 (title) was available, but the vehicle registration certificate Part 1 (document) was not. (Copy)
VIN comparison	The vehicle identification number (VIN) was read from the vehicle and its conformity with the submitted documents was confirmed by the undersigned during the inspection.
Inspection	The inspection conditions were sufficient for the assessment of the vehicle. No lifting equipment or pit was available for inspecting the vehicle. Therefore, inspection of the vehicle's underside was only possible to a limited extent.
Test drive	No test drive/shunting maneuver was carried out during the inspection of the vehicle.
Engine function test	An engine test run was performed.
readiness to drive	The vehicle was roadworthy at the time of inspection.

Value reducing factors

No.	Component group	Description
1	Door - front left side	Door edge - Scratch(es) - Smart repair
2	Mudguard - right side	Mudguard - right side - Scratch(es) - Smart repair
3	Body	A-pillar - left side - Scratch(es) - Smart repair
4	Body	Underbody panelling (Vorderteil) - Broken / torn - Replace



Wear and tear

No.	Component group	Description
1	Vehicle glazing	Windscreen - Stone chips - No deduction
2	Bonnet	Bonnet - Stone chips - No deduction
3	Front bumper	Front bumper - Stone chips - No deduction
4	Rear bumper	Rear bumper - Scratch(es) - No deduction

The vehicle shows signs of wear and tear commensurate with its age and use.

Missing parts

Description

Documents - Owner's manual

Order/Scope of Order

An order was placed to prepare a sales report for the described vehicle. This report includes the following:

- Description of key vehicle information
- Documentation of equipment features
(Delivery by third-party service providers)
- Documentation of damage, defects, missing parts
- Documentation of prior damage, unrepaired prior damage, repainting
- A brief visual or functional inspection of the equipment details, if possible.
(Functional testing of driver assistance systems is not included in the scope of services!)
- a photographic documentation of the vehicle

Basis for the order

This product is based on the guidelines for vehicle returns and valuations published by Alphabet Fleet GmbH. The expert makes the specific findings in each individual case objectively, within the framework of the prescribed standards, based on their own expertise.

The vehicle inspection takes place in a fully assembled, unassembled state.

Damage or defects that can only be detected during disassembly/diagnostic work or through further investigation remain within the realm of prognostic risk. An increased risk exists due to concealed defects caused by fraudulent misrepresentation and which were not identifiable by the expert.

Damage or defects resulting from normal use or wear and tear of the vehicle will be accepted in accordance with the applicable standard.

There was no explicit identification or monetary consideration of the expected features within the product.

Features which, in their nature and extent, slightly exceed normal use but do not constitute unacceptable damage, will be documented and indicated as signs of wear, if applicable.

Damage or defects that, according to the applicable standard, can no longer be attributed to normal use or wear and tear are listed under "Value Reducing Factors" in the product description.

Depending on the product specification, a monetary ID can be provided. If this takes place, the costs can be 100% or pro rata depending on the vehicle's age and mileage.

Previous damages

No apparent prior damage that had been repaired could be found on the vehicle.



Figure 1: Diagonal front (left)



Figure 2: Diagonal front (right)



Figure 3: Diagonal rear (left)



Figure 4: Diagonal rear (right)



Figure 5: Interior - front



Figure 6: Interior - rear



Figure 7: Instrument cluster



Figure 8: Instrument panel



Figure 9: Interior 360° view



Figure 10: Cargo area



Figure 11: VIN



Figure 12: Mounted tyres

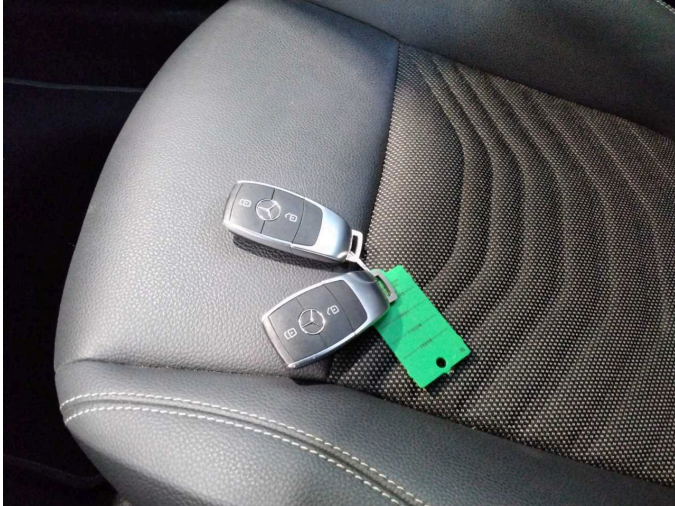


Figure 13: Documents



Figure 14: Additional tyres



Figure 15: Additional tyres

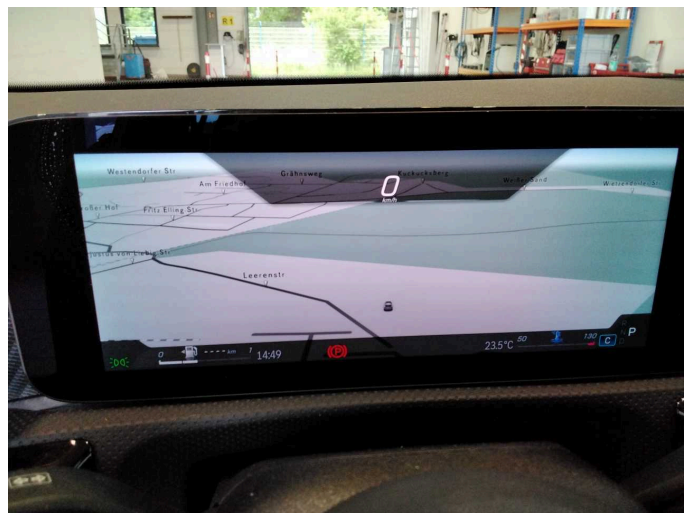


Figure 16: Navigation



Figure 17: Misc.

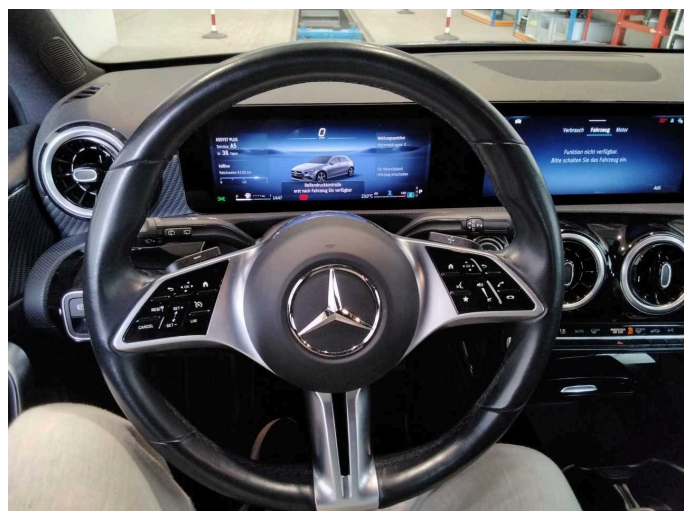


Figure 18: Misc.



Figure 19: Misc.



Figure 20: Misc.

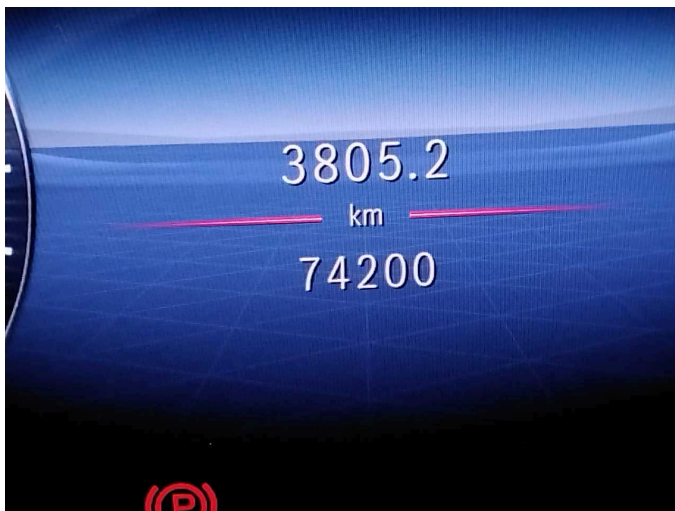


Figure 21: Misc.



Figure 22: Misc.



Figure 23: Misc.



Figure 24: Misc.



Figure 25: Misc.



Figure 26: Misc.

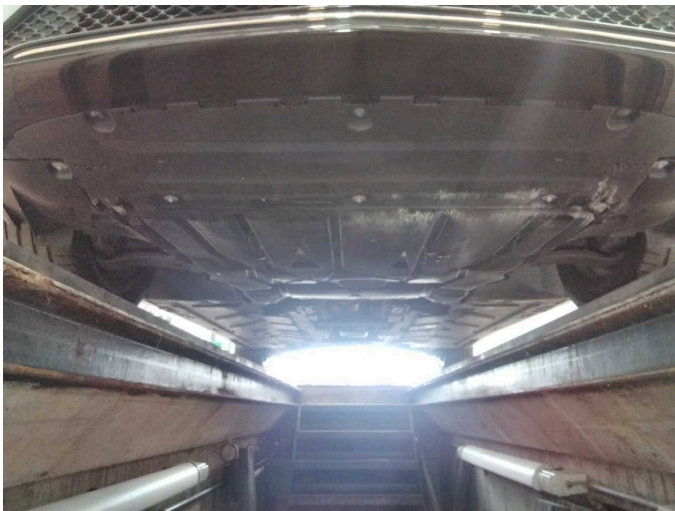


Figure 27: Misc.

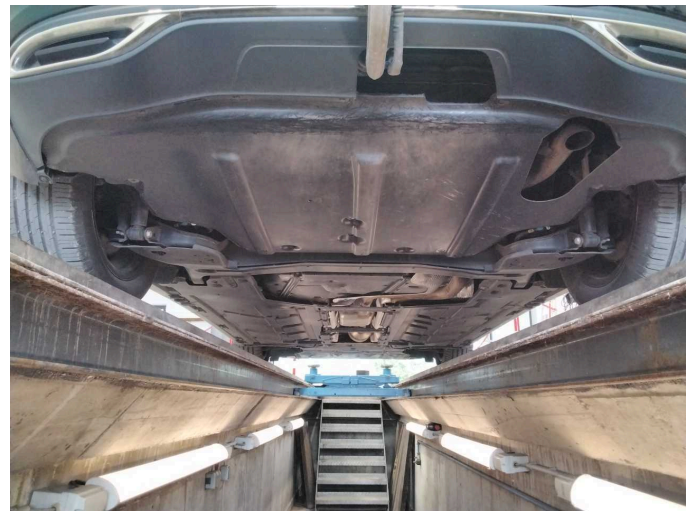


Figure 28: Misc.



Figure 29: Misc.



Figure 30: Misc.



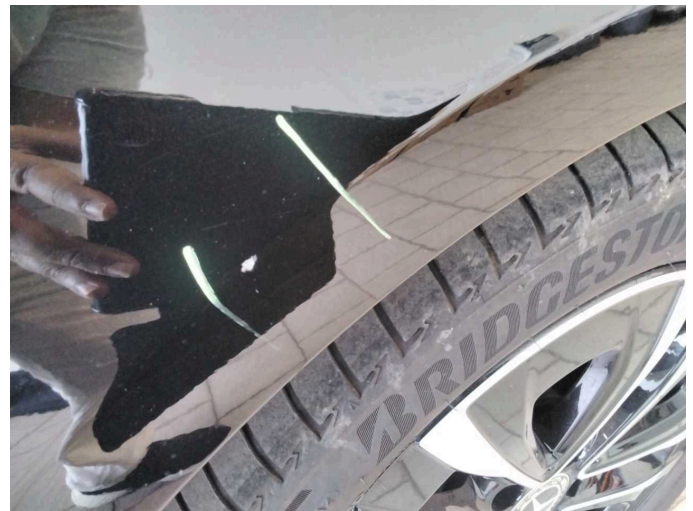
Damage 1: Door - front left side: Door edge - Scratch(es) - Smart repair



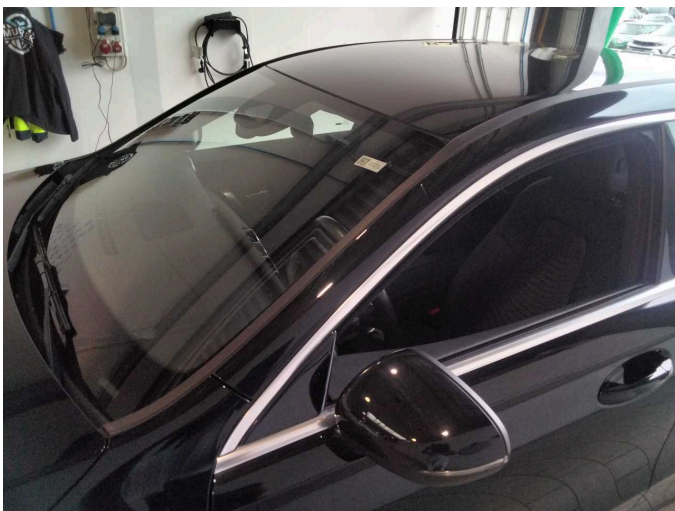
Damage 1: Door - front left side: Door edge - Scratch(es) - Smart repair



Damage 2: Mudguard - right side: Mudguard - right side - Scratch(es) - Smart repair



Damage 2: Mudguard - right side: Mudguard - right side - Scratch(es) - Smart repair



Damage 3: Body: A-pillar - left side - Scratch(es) - Smart repair



Damage 3: Body: A-pillar - left side - Scratch(es) - Smart repair



Damage 4: Body: Underbody panelling (Vorderteil) - Broken / torn - Replace



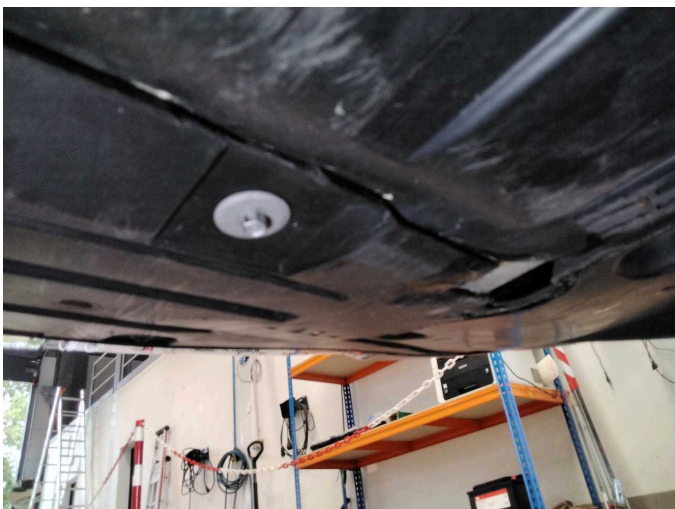
Damage 4: Body: Underbody panelling (Vorderteil) - Broken / torn - Replace



Damage 4: Body: Underbody panelling (Vorderteil) - Broken / torn - Replace



Damage 4: Body: Underbody panelling (Vorderteil) - Broken / torn - Replace



Damage 4: Body: Underbody panelling (Vorderteil) - Broken / torn - Replace