

Expertise

Protocol number: 44042954
Order number / reference: 26060496
Inspection date: 23 Feb 2026

Manufacturer: Mercedes-Benz

Model: Vito 116 CDI Extralang HA Aut. PRO

VIN: W1VVLCEZ5T4564030



Vehicle details

Manufacturer / Type / Model / Equipment

Mercedes-Benz Vito 116 CDI Extralang HA Aut. PRO

Vehicle Identification number W1VVLCEZ5T4564030

Mileage (Read) 14,370 km

First registration 30 Sept 2025

Number of holders 1

Power / Engine displacement 120 kw / 1,950 ccm

Fuel type / Cylinder Diesel / 4

Gearbox / Number of gears Automatic / 9

Type of drive Rear drive

Type of vehicle Van

Colour / colour code Arktisweiss

Doors / Seats 4 / 3

Upholstery type Cloth

Colour of upholstery Black

Type of use rental car



Vehicle details

Maintenance booklet / proof	digital proof / complete	Next maintenance in	567 Tag(e)
Key is / should be	2 / 2	FZG documents	ZB#2 (B) was available (copy), ZB#1 (S) was not available
		Letter No.	HN440736
Previous damage / Accident	None detectable	Repainting	None detectable
Inspection conditions	sufficient	Lifting equipment / pit	No
Test drive	Not performed	Engine function test	Performed
Manufacturer key number/ type code number	2222 / BBJ 11542		
Emission standard	EURO6;WLTP;EB;PI/CI;M, N1, N2	Fine dust sticker	
Permitted total weight	2,800 kg	Empty weight	

Tyres

Mounted tyres

#	Tyre size	Type of tyre	Manufacturer	Tread depth
1)	225/55 R17 109T	Winter tyres on Steel rim with wheel cover	Continental	5mm / 5mm
2)	225/55 R17 109T	Winter tyres on Steel rim with wheel cover	Continental	5mm / 5mm

Legend: Tread depth for tires on the left is in the first place, for tires on the right is in the second place on the axle in the direction of travel



Equipment

Standard equipment

- Screw-in towing eye front/rear
- Driver's side airbag
- ATTENTION ASSIST
- Outside temperature display
- Battery: fleece battery 12 V / 92 Ah
- Hill start assist
- Brake light, third
- COC documents
- diesel particulate filter
- Electrical components for trailer socket
- Headlight assistant
- Chassis: Basic chassis
- Electric parking brake
- Generator management
- Transmission: 9G-TRONIC
- Seatbelt warning device for front passenger seat
- Lockable glove compartment
- Boot lid
- Intelligent speed assistant
- Instrument cluster with color display
- Communication module (LTE) for digital services
- Large fuel tank, approx. 70 liters
- Steering wheel adjustable for tilt and height
- Headlight range adjustment
- Navigation: Navigation pre-installation
- Breakdown management
- Radio: Digital Radio DAB
- Full wheel cover
- Tires: Tires without specified make
- Wheels: Premium complete wheel protection
- High-resolution reversing camera with guide lines
- Headlights: halogen technology
- Key: Multi-button remote control
- Electromechanical power steering
- Seat: Lumbar support driver's seat
- Seats: Comfort passenger seat
- Seats: Passenger seat cushion depth adjustment
- Lane Keeping Assist active
- 12V socket
- Blind Spot Assist
- Updates intelligent speed assistant
- Pre-installation for Remote Services Plus
- Maintenance interval display ASSYST
- Heat-insulating glass all around
- Registration as a truck
- Passenger side airbag
- Towing capacity 0 kg/lbs
- Exterior mirrors electrically adjustable and heated, left and right
- Mounting points in the roof frame
- Brake Assist, active
- Brake lights, adaptive
- Front cupholder
- Electronic tachometer
- Electronic Stability Program (ADAPTIVE ESP) with integrated Anti-lock Braking System (ABS)
- Electric window lifter driver/passenger
- Generator 14 V / 250 A
- Speed limit 210 km/h
- Weight variant 2,800 kg
- Seatbelt warning device for driver's seat
- Rear camera not foldable
- HOLD function
- Tempmatic controlled air conditioning
- Comfort closing
- Headrests (2), front
- Paint finish: Solid paint
- Steering wheel: Multifunction steering wheel
- Mercedes-Benz emergency call system
- Package: BlueEFFICIENCY
- Upholstery: Caluma fabric, black
- Radio: MBUX multimedia system
- Tires: 225/55R17
- Tire pressure monitoring
- Wheels: Steel rims 6.5 J x 17
- Electric extractor fan, power level 5
- Sliding door right loading/passenger compartment
- Crosswind Assist
- Seat: Lumbar support passenger seat
- Seats: Driver's seat Plus with flat seat surface
- Seats: Comfort driver's seat
- Seats: Driver's seat cushion depth adjustment
- Start-stop function
- Cruise control
- continuous partition wall
- First aid kit
- Warning triangle
- Immobiliser
- Central locking with radio remote control

Extra equipment



- Towing capacity 2500 kg
 - Wooden floor (cargo area)
 - Load anchoring rail system
 - Package: Parking package with reversing camera (12 ultrasonic sensors (6 in the front and 6 in the rear bumper) - reversing camera - PARKTRONIC with active parking assist - Rear Cross Traffic Alert - Maneuvering brake - Drive Away Assist)
 - Phone: Smartphone integration package
- All-weather floor mats with high surrounding edge
 - Interior lining of the cargo area up to roof height (wood)
 - LED light strip in the cargo area
 - Package: Winter Package (heated seats for driver and passenger seats - heated windshield washer nozzles - heated steering wheel)
 - Tires: M+S tires
 - Seats: Passenger seat, two-seater

Brief expert findings

Documents submitted	At the time of the inspection, the vehicle registration certificate Part 2 (title) was available, but the vehicle registration certificate Part 1 (document) was not. (Copy)
VIN comparison	The vehicle identification number (VIN) was read from the vehicle and its conformity with the submitted documents was confirmed by the undersigned during the inspection.
Inspection	The inspection conditions were sufficient for the assessment of the vehicle. No lifting equipment or pit was available for examining the vehicle. Therefore, inspection of the vehicle's underside was only possible to a limited extent.
Test drive	No test drive/shunting maneuver was carried out during the inspection of the vehicle.
Engine function test	An engine test run was performed.

Value reducing factors

No.	Component group	Description
1	Side panel - rear left side	Side panel - Deformed - Repair and paint

Wear and tear

No.	Component group	Description
1	Vehicle glazing	Windscreen - Stone chips - No deduction
2	Bonnet	Bonnet - Stone chips - No deduction
3	Roof	Roof (Dachkante) - Stone chips - No deduction
4	Interior	Interior - Scratch(es) - No deduction
5	Front bumper	Front bumper - Stone chips - No deduction
6	Rear bumper	Rear bumper - Scratch(es) - No deduction

The vehicle shows signs of wear commensurate with its age and use.

Missing parts

Description

Documents - Log book



Order/Scope of order

The order was placed to prepare a sales report for the vehicle described. This includes the following:

- Description of core relevant information about the vehicle
- Documentation of equipment features
(Delivery by third-party service providers)
- Documentation of damage, defects, missing parts
- Documentation of previous damage, unrepaired previous damage, repainting
- a brief visual or functional inspection of the equipment details if possible.
(Functional tests of driver assistance systems are not included in the scope of services!)
- a photo documentation of the vehicle

Basis for the order

This product is based on the guidelines for vehicle returns and valuations of light commercial vehicles from Alphabet Fuhrparkmanagement GmbH. The expert makes the explicit findings in each individual case objectively within the framework of the specified standards based on his or her own expertise.

The vehicle inspection takes place in a disassembled state.

Damage or defects that can only be detected during disassembly/diagnosis work or through advanced knowledge remain within the scope of the prognosis risk. An extended risk exists for concealed defects caused by fraudulent deception and not identifiable by the expert.

Damage or defects resulting from normal use or wear and tear of the vehicle will be accepted according to the applicable standard.

There was no explicit identification or monetary consideration of the expected features within the product.

Features which in their nature and severity slightly exceed normal use but do not constitute unacceptable damage will be documented and identified under signs of use if necessary.

Damage or defects that can no longer be attributed to normal use or wear and tear according to the underlying standard are listed in the product under value-reducing factors.

Depending on the product specification, a monetary ID can be provided. If this takes place, the costs can be 100% d or pro rata depending on the vehicle's age and mileage.

Previous damages

No apparent prior damage that had been repaired could be found on the vehicle.

Comments

- Die Unterbodenbesichtigung war nur ebenerdig & eingeschränkt möglich.



Figure 1: Diagonal front (left)



Figure 2: Diagonal front (right)



Figure 3: Diagonal rear (left)



Figure 4: Diagonal rear (right)



Figure 5: Interior - front



Figure 6: Interior - rear



Figure 7: Instrument cluster



Figure 8: Instrument panel



Figure 9: Interior 360° view



Figure 10: Cargo area

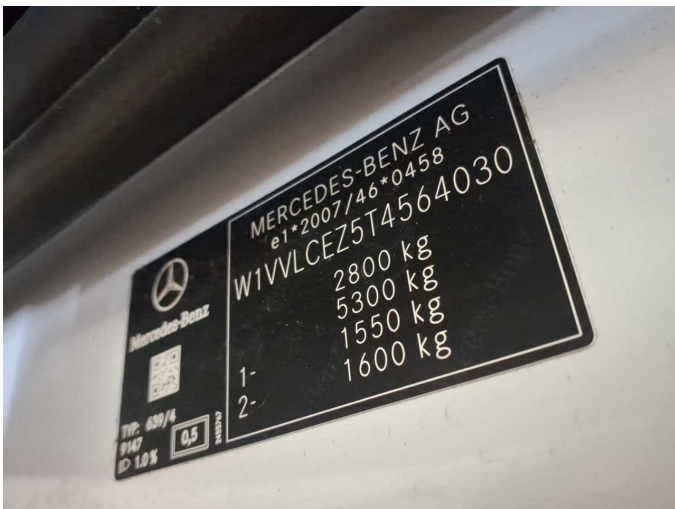


Figure 11: VIN



Figure 12: Mounted tyres



Figure 13: Documents

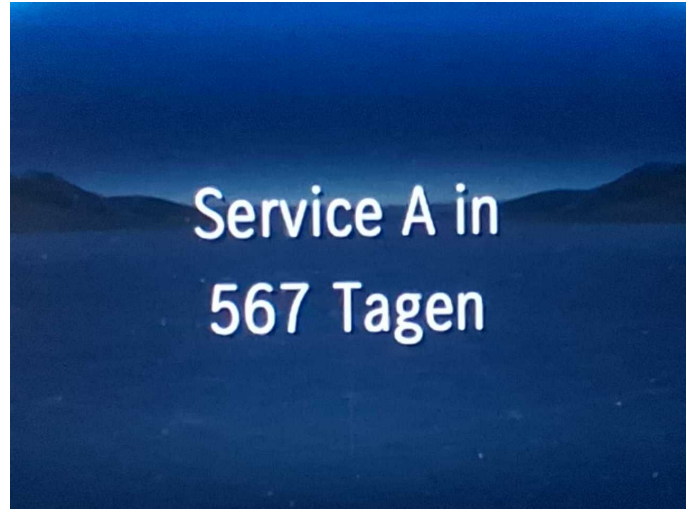


Figure 14: Documents



Figure 15: Misc.



Figure 16: Misc.



Figure 17: Misc.



Figure 18: Misc.



Figure 19: Misc.



Figure 20: Misc.

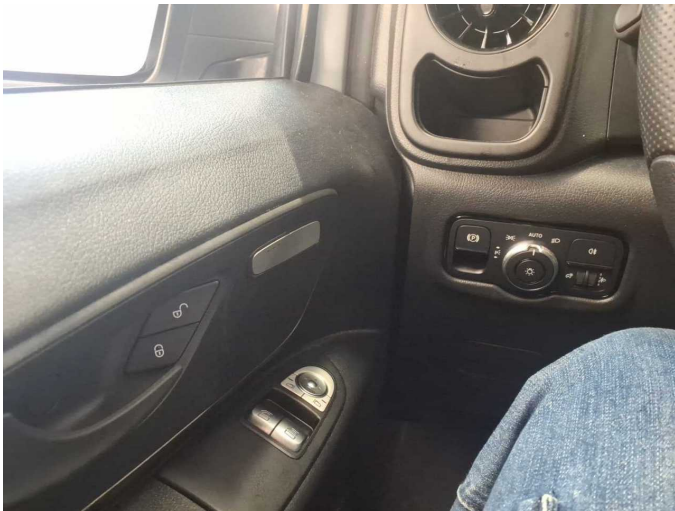


Figure 21: Misc.

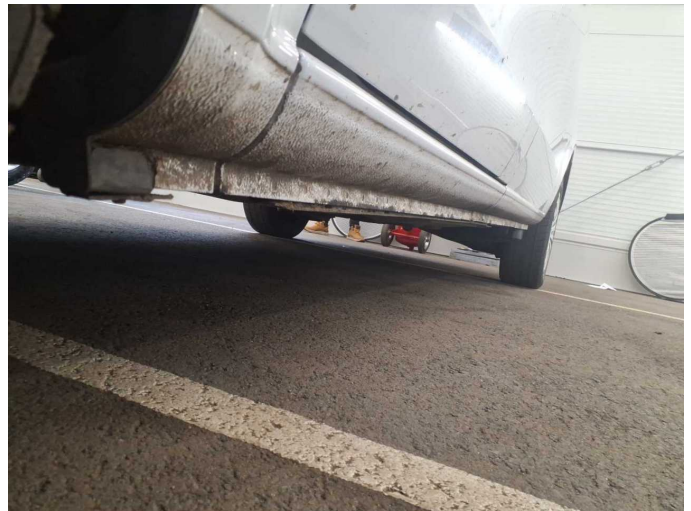


Figure 22: Misc.

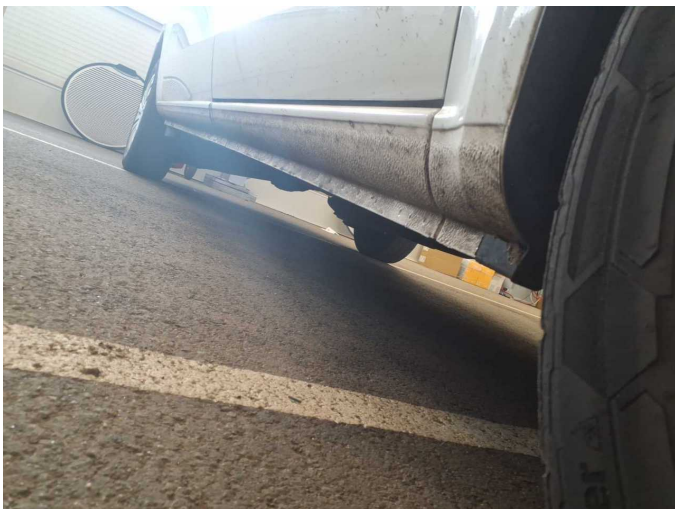


Figure 23: Misc.



Figure 24: Misc.



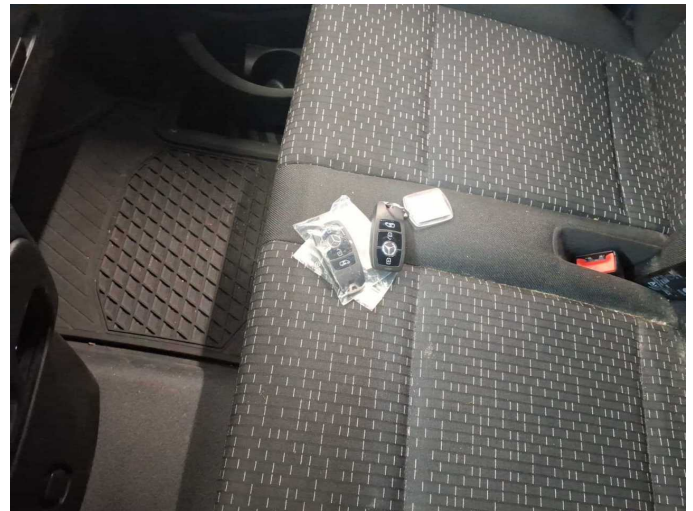
Figure 25: Misc.



Damage 1: Side panel - rear left side: Side panel - Deformed - Repair and paint



Damage 1: Side panel - rear left side: Side panel - Deformed - Repair and paint



Missing part 1: Documents: Log book - Missing - Replace