

Expertise

Protocol number: 45463053
Order No. / Reference: 26276483
Inspection date: 13 May 2026

Manufacturer: Opel

Model: Vivaro 2.0 BlueHDi 145 Lang S&S EAT8

VIN: VXEVLEHS2R7881305



Vehicle details

Manufacturer / Type / Model / Equipment

Opel Vivaro 2.0 BlueHDi 145 Lang S&S EAT8

Vehicle Identification number VXEVLEHS2R7881305

Mileage (Read) 48,232 km

First registration 20 Feb 2025

Number of holders 1

Power / Engine displacement 106 kw / 1,997 ccm

Fuel type / Cylinder Diesel / 4

Gearbox / Number of gears Automatic / 8

Type of drive Front drive

Type of vehicle Van

Colour / colour code Kaolin Weiß

Doors / Seats 4 / 3

Upholstery type Cloth

Colour of upholstery Grey



Vehicle details

Maintenance booklet / proof	digital proof / complete	Next maintenance in	
Last service on / at	01/2026 at 38,697 km		
Key is / should be	2 / 2	FZG documents	ZB#2 (B) was available (copy), ZB#1 (S) was not available.
		Letter No.	HG543853
Previous damage / Accident	None detectable	Repainting	None detectable
Inspection conditions	sufficient	Lifting equipment / pit	yes
Test drive	Not performed	Engine function test	Performed
Manufacturer key number/ type code number	3003 / BCD 02106		
Emission standard	EURO6;WLTP;EA;PI/CI;M, N1, N2	fine dust sticker	
Permitted total weight	3,100 kg	Empty weight	

Tyres

Mounted tyres

#	Tyre size	Type of tyre	Manufacturer	Tread depth
1)	215/65 R16 106T	Winter tyres on Steel rim with wheel cover	Hankook	6mm / 6mm
2)	215/65 R16 106T	Winter tyres on Steel rim with wheel cover	Hankook	8mm / 8mm

Additional tyres

#	Tyre size	Type of tyre	Manufacturer	Tread depth
1)	215/65 R16 106T	Summer tyres on Steel	Michelin	6mm / 6mm
2)	215/65 R16 106T	Summer tyres on Steel	Michelin	7mm / 7mm

Replacement

Typ	Tyre size	Type of tyre	Manufacturer	Tread depth
E	215/65 R16 106T	Summer tyres on Steel	Michelin	7 mm

Legend: Tread depth information for the left tire is listed first, for the right tire it is listed second on the axle in the direction of travel.



Equipment

Standard equipment

- ABS including brake assist and adaptive brake light
- Exterior mirrors, electrically adjustable and heated
- third brake light
- Rear parking aid (acoustic)
- Windows: Electric window regulator, row 1
- Transmission: 8-speed automatic
- Front headrests (3)
- Steering wheel remote control
- increased payload
- Particulate filter: Diesel particulate filter with SCR (AdBlue)
- Upholstery: Cloth
- Radio: Audio system RCE (5" monochrome touchscreen, DAB, Bluetooth, hands-free system, USB-A, 4 speakers)
- Wheels: Steel wheels 7 J x 16 with wheel hub cover (with summer tires 215/65 R 16 C 106T)
- Seats: Driver's seat height-adjustable, with armrest and lumbar support (double passenger seat with storage compartments under the bench seat)
- 12V, 120W power outlet in the glove compartment
- Doors: Rear wing doors 50/50, opening 180°, sheet metal
- Immobiliser
- Central locking: 2 remote keys

- Airbag: Driver and passenger airbag
- Hill Start Assist
- Connect Box (emergency call and assistance system)
- ESP, Electronic Stability Program
- Speed controller and limiter
- Seat belts: 3-point safety belts in the front
- Paint finish: Solid color paint
- Light and rain sensor
- Package: Drive Assist (Lane Keeping Assist - Collision Warning and Emergency Braking Assist - Speed Limit Display - Attention Assist - High Beam Assist)
- Tires: Tire repair kit
- Tire pressure monitoring system
- Headlights: Standard halogen, daytime running lights
- Power steering
- Seats: Backrest of seats in row 1 without fabric covering on the back
- Start/Stop System
- Partition wall, sheet metal cladding
- Doors: Sliding door on the right, manual
- Central locking

Extra equipment

- Package: Comfort (Keyless system incl. exterior door handles in body color, black for E0 colors - Leather steering wheel - Heated steering wheel - Package: Sight & Light (Fog lights, electrically adjustable/heated/and folding exterior mirrors, 12V, 120W socket in glove compartment and left D-pillar) - Interior design package: Black dashboard and door panels, chrome air vents - Automatic climate control, 2 zones - Electric parking brake - Inductive charging pad - Closed storage compartments: central dashboard, lower passenger side)
- Package: Winter (Seat heating on all seats in row 1 - Side and head airbags in row 1 - Leather steering wheel - Heated steering wheel)

- Package: Connect (Surround View Package (City Package (180° reversing camera), Sight & Light Package (fog lights, electrically adjustable, heated and folding exterior mirrors, 12V, 120W socket in glove compartment and left D-pillar), Blind Spot Assist, front/rear parking aid with acoustic warning including side obstacle detection.) - Connect Nav Package (IVI high audio system, navigation system, 10" touchscreen, DAB, BT, WiFi, USB-C, Android, Apple CarPlay, voice assistant, digital instrument cluster, 10", color))
- Wheels: Spare wheel

Brief expert findings

Documents submitted	At the time of the inspection, the vehicle registration certificate Part 2 (title) was available, but the vehicle registration certificate Part 1 (document) was not. (Copy)
VIN comparison	The vehicle identification number (VIN) was read from the vehicle and its conformity with the submitted documents was confirmed by the undersigned during the inspection.
Inspection	The inspection conditions were sufficient for the assessment of the vehicle. Lifting equipment and/or a pit were available for examining the vehicle.
Test drive	No test drive/shunting maneuver was carried out during the inspection of the vehicle.
Engine function test	An engine test run was performed.



Value reducing factors

No.	Component group	Description
1	Wheel / tyres	Wheel cover - rear left side - Missing - Replace
2	Sliding door, right	Sliding door - Scratch(es) - Paint

Wear and tear

No.	Component group	Description
1	Body	Wheel well - rear left side (Innen) - Dent / paintcoat damage - No deduction
2	Body	Wheel well - rear right side - Dent / paintcoat damage - No deduction
3	Sill - left side	Sill - Scratch(es) - No deduction

The vehicle shows signs of wear and tear commensurate with its age and use.

Order/Scope of Order

An order was placed to prepare a sales report for the described vehicle. This report includes the following:

- Description of key vehicle information
- Documentation of equipment features
(Delivery by third-party service providers)
- Documentation of damage, defects, missing parts
- Documentation of prior damage, unrepaired prior damage, repainting
- A brief visual or functional inspection of the equipment details, if possible.
(Functional testing of driver assistance systems is not included in the scope of services!)
- a photographic documentation of the vehicle

Basis for the order

This product is based on the guidelines for vehicle returns and valuations published by Alphabet Fleet GmbH. The expert makes the specific findings in each individual case objectively, within the framework of the prescribed standards, based on their own expertise.

The vehicle inspection takes place in a fully assembled, unassembled state.

Damage or defects that can only be detected during disassembly/diagnostic work or through further investigation remain within the realm of prognostic risk. An increased risk exists due to concealed defects caused by fraudulent misrepresentation and which were not identifiable by the expert.

Damage or defects resulting from normal use or wear and tear of the vehicle will be accepted in accordance with the applicable standard.

There was no explicit identification or monetary consideration of the expected features within the product.

Features which, in their nature and extent, slightly exceed normal use but do not constitute unacceptable damage, will be documented and indicated as signs of wear, if applicable.

Damage or defects that, according to the applicable standard, can no longer be attributed to normal use or wear and tear are listed under "Value Reducing Factors" in the product description.

Depending on the product specification, a monetary ID can be provided. If this takes place, the costs can be 100% d or pro rata depending on the vehicle's age and mileage.

Previous damages

No apparent prior damage that had been repaired could be found on the vehicle.

Comments

- Winterradsatz ist kein Bestandteil des Auslieferungsumfangs.



Figure 1: Diagonal front (left)



Figure 2: Diagonal front (right)



Figure 3: Diagonal rear (left)



Figure 4: Diagonal rear (right)



Figure 5: Interior - front



Figure 6: Interior - rear



Figure 7: Instrument cluster



Figure 8: Instrument panel



Figure 9: Interior 360° view



Figure 10: Cargo area



Figure 11: VIN



Figure 12: Mounted tyres

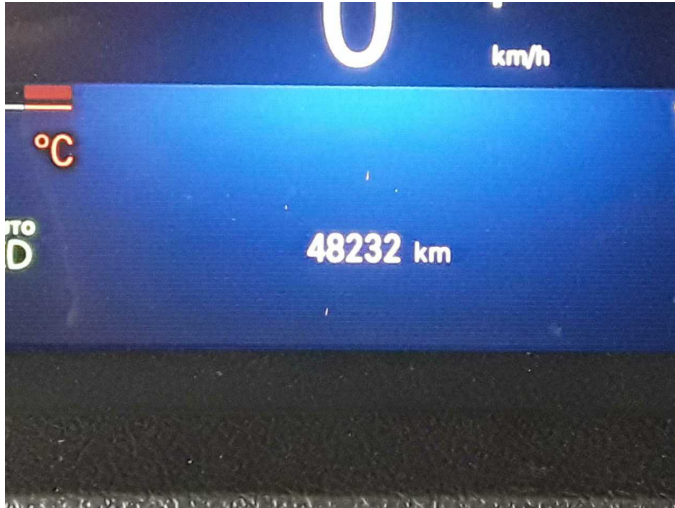


Figure 13: Documents

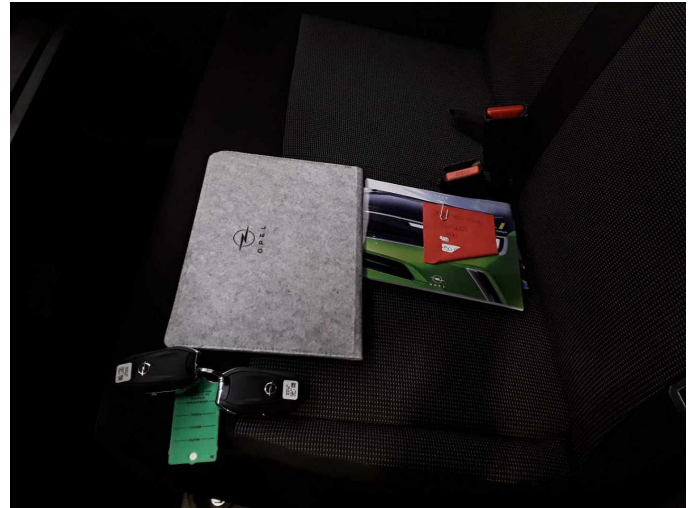


Figure 14: Documents



Figure 15: Additional tyres



Figure 16: Navigation



Figure 17: Misc.

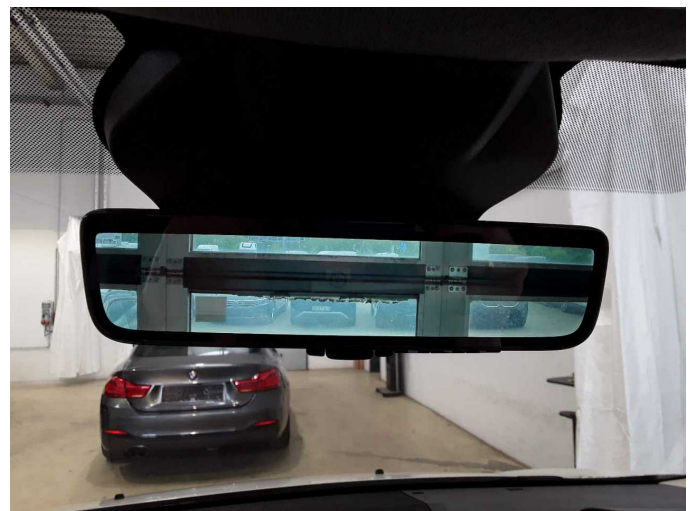


Figure 18: Misc.



Figure 19: Misc.



Figure 20: Misc.



Figure 21: Misc.



Figure 22: Misc.



Figure 23: Misc.



Figure 24: Misc.



Figure 25: Misc.



Figure 26: Misc.



Damage 2: Sliding door, right: Sliding door - Scratch(es) - Paint



Damage 2: Sliding door, right: Sliding door - Scratch(es) - Paint



Wartungshistorie

(gemäß Auftraggeber Informationen)

Fahrgestellnummer: VXEVLEHS2R7881305

Hersteller / Modell: OPEL OPEL Vivaro 2.0 BlueHDi 145 Lang S&S EAT8

Datum	KM-Stand	Beschreibung
15.01.2026	38.697	Motoröl b. Wartung; Ölfilter ern; Ölwechsel; Wartung Sonstiges