

Expertise

Protocol number: 46179839
Order No. / Reference: 26581655
Inspection date: 25 Jun 2026

Manufacturer: Ford

Model: Mondeo Turnier 2.0 Ti-VCT Hybrid VIGNALE

VIN: WF0FXXWPCHMP06046



Vehicle details

Manufacturer / Type / Model / Equipment

Ford Mondeo Turnier 2.0 Ti-VCT Hybrid VIGNALE

Vehicle Identification number	WF0FXXWPCHMP06046
Mileage (Read)	57,260 km
First registration	14 Jun 2021
Number of holders	1
Next periodical technical inspection	07/2026 (Report not on hand)

Power / Engine displacement	103 kw / 1,999 ccm
------------------------------------	--------------------

Fuel type / Cylinder	Hybrid Petrol / E / 4
-----------------------------	-----------------------

Gearbox / Number of gears	Automatic / 1
----------------------------------	---------------

Type of drive	Front drive
----------------------	-------------

Type of vehicle	Station wagon
------------------------	---------------

Colour / colour code	Magnetic-Grau (Metallic)
-----------------------------	--------------------------

Doors / Seats	5 / 5
----------------------	-------

Upholstery type	Leather
------------------------	---------

Colour of upholstery	Grey-Anthracite
-----------------------------	-----------------

TÜV SÜD Auto Partner GmbH
Wiesenring 2
04159 Leipzig

Inspection location
Hartmann Fleet Professionals GmbH
Leerenstraße 25
29683 Bad Fallingbommel



Equipment



Standard equipment

- Adaptive LED headlights (Ford Dynamic LED) (LED headlights, adaptively steering, including automatic headlight range control - sequential LED turn signals (front) - LED daytime running lights)
- Anti-lock braking system (ABS) with electronic brake force distribution (EBD)
- Attachment points for safety partition grilles (attachment points 2nd row of seats)
- Tires: 8 J x 18 alloy wheels (4) with 235/45 R 18 (in 5 x 3-spoke design, in Liquid Aluminium premium paint finish)
- Tires: Tire repair kit
- Hill descent control
- third brake light
- headliner, light
- Dual exhaust system
- Front door sill trim
- Driver information system - two 10.7 cm LCD color displays (on-board computer with consumption and mileage information - special display of battery and fuel consumption)
- Electric front and rear windows (with anti-pinch protection and automatic opening and closing function)
- Ford Easy Fuel (The Ford Easy Fuel convenience refueling system eliminates the need for a separate internal fuel filler cap and prevents misfueling by detecting the size difference between petrol and diesel nozzles. The filler neck only opens when the correct fuel is used.)
- Heated windshield
- luggage compartment cover
- Luggage compartment lighting
- Cruise control system with intelligent speed limiter
- Transmission: CVT automatic
- Back window, heater
- Interior lighting with delay function (with reading lights, front and rear)
- Interior mirror automatically dimming
- Isofix mounting (including top tether anchor points on the outer seats of the 2nd row)
- Electric child safety lock
- Air conditioning with automatic temperature control (separately adjustable for driver and passenger side (2-zone automatic climate control))
- Front headrests, 4-way height and tilt adjustable
- Paint finish: Metallic
- LED design daytime running lights in the fog lights
- Steering wheel: Multifunction leather steering wheel
- Reading lights front and rear
- Front center console with padded armrests (storage compartment under the armrest - 2 cup holders)
- Activated carbon filter
- Acoustic Warning System (AVAS)
- Ambient lighting with LED technology (including door storage, front door handle and footwell lighting)
- Exterior mirrors in body color, driver and passenger side, electrically adjustable and heated (with integrated turn signals and ambient lighting and electrically foldable - additionally with memory function, automatically dimming on the driver's side and with automatic tilt towards the sidewalk when reversing)
- Tires: Tire pressure monitoring system (TPMS)
- Hill start assist
- Chrome decorative trim strips on the sides and rear
- Roof rails, aluminum look
- Tachometer
- Electronic Safety and Stability Program (ESP) including Traction Control (ASR) (and trailer stabilization function)
- Lane Keeping Assist including Lane Keeping Assist and Driver Alert (including High Beam Assist and Road Edge Detection)
- High Beam Assist
- Electronic parking brake
- Ford Power Start function (with Ford Key Free system - keyless locking/unlocking - second passive vehicle key)
- FordPass Connect including eCall, live traffic information and Wi-Fi hotspot (information about the current status or location of the vehicle as well as control of selected vehicle functions via smartphone with the FordPass app - eCall emergency call system to send an emergency call in the event of an accident or when manually activated - Real-time traffic information - Wi-Fi hotspot (up to 4G/LTE7, for up to 10 mobile devices))
- rear window wiper
- Interior trim in high-quality leather (door panels, dashboard)
- Intelligent Protection System (IPS): - Front airbag for driver and front passenger - Knee airbag for driver - Head and shoulder airbags, front and rear - Side airbags for driver and front passenger - Seat belt tensioners and force limiters, front - 3-point seat belts on all seats, height-adjustable at the front)
- Rear headrests (3), height adjustable
- Radiator grille in honeycomb design (upper part) with matte chrome decorative surround
- Leather gear knob
- Steering column, adjustable (adjustable in height and reach)
- MyKey key system (individually programmable second key) (setting options include: limiting the maximum speed and radio volume, speed warning, safety assistance systems cannot be deactivated, locking of ESP deactivation, extended warning system for unfastened seat belts)
- Fog light
- Emergency brake light (pulsating illumination of the brake lights during hard braking)
- Front and rear parking pilot system



- Navigation: Sony navigation system including Ford SYNC 3 with AppLink and touchscreen and DAB/DAB (12 premium speakers including subwoofer/10 premium speakers in conjunction with hybrid engine - 10-channel audio amplifier with 390 watts of power - 8" touchscreen (20.3 cm screen diagonal) - 8 speakers - steering wheel controls - Bluetooth hands-free system and audio streaming - 2 USB ports - voice control for audio and telephone - SMS text-to-speech function - road map for Europe)
- Pre-Collision Assist (with pedestrian and bicycle detection)
- Regenerative braking system
- Rear view camera
- LED taillights (LED brake lights)
- Rear seat backrest, foldable, 60:40 split
- Windscreen wipers with rain sensor
- Headlight dipped beam with switch-off delay including "greeting function" (halogen headlights)
- Side skirts painted in car color
- Electromechanical speed-dependent power steering
- Seats: Map pocket on the driver's seat backrest
- 12-volt power outlet in the luggage compartment
- Front bumper painted in body color (rear bumper top painted in body color, bottom painted black)
- Lashing eyes in the luggage compartment floor
- Immobiliser
- Central locking (including selective locking (one door/all doors), remote control and luggage compartment remote release)

Extra equipment

- Attachment points for safety partition grilles (attachment points 1st row of seats)
- Paint finish: Magnetic Grey Metallic
- Panoramic sliding sunroof, electric (with heat protection and anti-pinch protection including sunshades in the rear side doors and electric sun visor)
- Safety partition net behind the 2nd row of seats for the luggage compartment

- Pedal assembly with aluminum pads
- Upholstery: Premium leather with massage function (multicontour front seats) (seat center panels and door inserts as well as upper part of the dashboard in leather - driver's seat, 10-way electrically adjustable with memory function - passenger seat, 10-way electrically adjustable - 11 variably adjustable air cushions - front seats, climate-controlled (individually and variably heated with multi-stage ventilation))
- Headlight assistant with day/night sensor
- Side windows from the 2nd row of seats and rear window, dark tinted.
- Seats: Map pocket on the back of the front passenger seat
- Seats: Front seats can be heated individually and variably.
- 12-volt socket in the front interior
- Carpet floor mats front and rear
- Traffic sign recognition system
- Warning system for unfastened seat belts in the front and second row of seats
- Cigarette lighter (and ashtray in the center console)

- Package: Business 2 (Sony navigation system incl. Ford SYNC 3 with AppLink and 8" touchscreen (20.3 cm), additionally with premium sound system and DAB/DAB+ radio, reversing camera, parking assistant with parallel and perpendicular parking function incl. front and rear parking sensors, blind spot information system incl. cross traffic alert and dynamic distance detection, electric tailgate, adaptive LED headlights, LED headlights with adaptive steering and automatic headlight range control, LED daytime running lights, adaptive cruise control)

Brief expert findings

Documents submitted	At the time of the inspection, the vehicle registration certificate Part 2 (title) was available, but the vehicle registration certificate Part 1 (document) was not. (Copy)
VIN comparison	The vehicle identification number (VIN) was read from the vehicle and its conformity with the submitted documents was confirmed by the undersigned during the inspection.
Inspection	The inspection conditions were sufficient for the assessment of the vehicle. No lifting equipment or pit was available for inspecting the vehicle. Therefore, inspection of the vehicle's underside was only possible to a limited extent.
Test drive	No test drive/shunting maneuver was carried out during the inspection of the vehicle.
Engine function test	An engine test run was performed.



Value reducing factors

No.	Component group	Description
1	Equipment	Tirefit filler - Expired - Replace
2	Rear bumper	Rear bumper - Scratch(es) - Smart repair
3	Side panel - rear right side	Sill - Scratch(es) - Smart repair
4	Body	C-pillar - left side - dent(s) - Smart repair
5	Roof	Roof rail - left side - Scratch(es) - Smart repair

Wear and tear

No.	Component group	Description
1	Vehicle glazing	Windscreen - Stone chips - No deduction
2	Bonnet	Bonnet - Stone chips - No deduction
3	Front bumper	Front bumper - Stone chips - No deduction

The vehicle shows signs of wear and tear commensurate with its age and use.

Order/Scope of Order

An order was placed to prepare a sales report for the described vehicle. This report includes the following:

- Description of key vehicle information
- Documentation of equipment features
(*Delivery by third-party service providers*)
- Documentation of damage, defects, missing parts
- Documentation of prior damage, unrepaired prior damage, repainting
- A brief visual or functional inspection of the equipment details, if possible.
(*Functional testing of driver assistance systems is not included in the scope of services!*)
- a photographic documentation of the vehicle

Basis for the order

This product is based on the guidelines for vehicle returns and valuations published by Alphabet Fleet GmbH. The expert makes the specific findings in each individual case objectively, within the framework of the prescribed standards, based on their own expertise.

The vehicle inspection takes place in a fully assembled, unassembled state.

Damage or defects that can only be detected during disassembly/diagnostic work or through further investigation remain within the realm of prognostic risk. An increased risk exists due to concealed defects caused by fraudulent misrepresentation and which were not identifiable by the expert.

Damage or defects resulting from normal use or wear and tear of the vehicle will be accepted in accordance with the applicable standard.

There was no explicit identification or monetary consideration of the expected features within the product.

Features which, in their nature and extent, slightly exceed normal use but do not constitute unacceptable damage, will be documented and indicated as signs of wear, if applicable.

Damage or defects that, according to the applicable standard, can no longer be attributed to normal use or wear and tear are listed under "Value Reducing Factors" in the product description.

Depending on the product specification, a monetary ID can be provided. If this takes place, the costs can be 100% d or pro rata depending on the vehicle's age and mileage.

Previous damages

No apparent prior damage that had been repaired could be found on the vehicle.



Comments

- Winterradsatz ist kein Bestandteil des Auslieferungsumfangs.



Figure 1: Diagonal front (left)



Figure 2: Diagonal front (right)



Figure 3: Diagonal rear (left)



Figure 4: Diagonal rear (right)



Figure 5: Interior - front



Figure 6: Interior - rear



Figure 7: Instrument cluster



Figure 8: Instrument panel



Figure 9: Interior 360° view



Figure 10: Cargo area



Figure 11: VIN



Figure 12: Mounted tyres



Figure 13: Documents

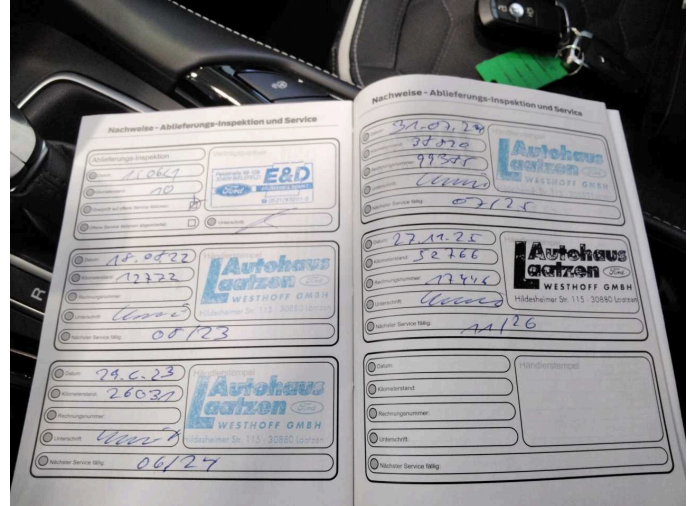


Figure 14: Documents



Figure 15: Additional tyres



Figure 16: Additional tyres

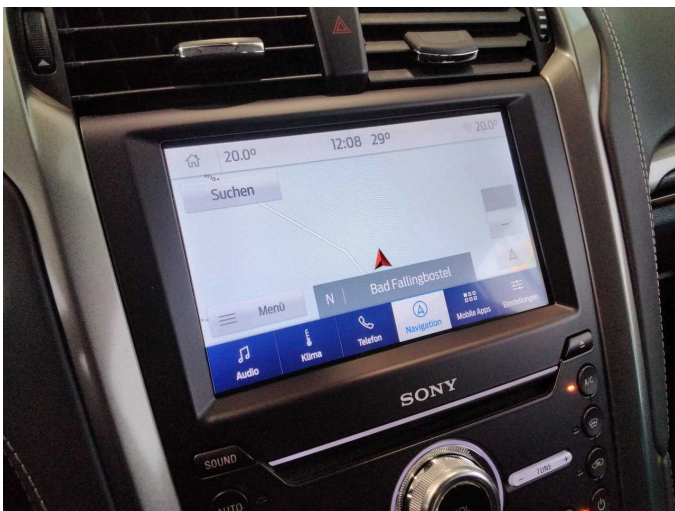


Figure 17: Navigation



Figure 18: Misc.

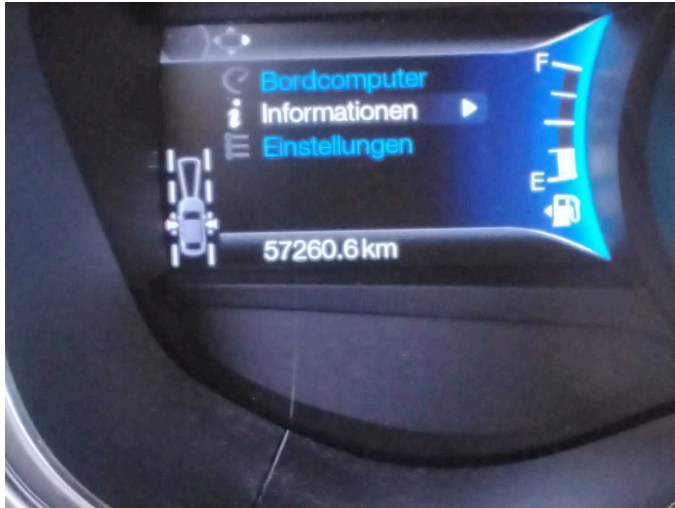


Figure 19: Misc.



Figure 20: Misc.



Figure 21: Misc.



Figure 22: Misc.



Figure 23: Misc.

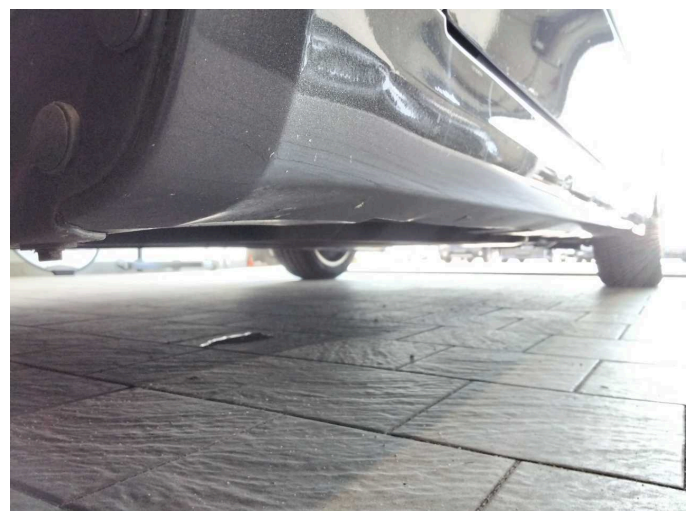


Figure 24: Misc.



Figure 25: Misc.



Figure 26: Misc.



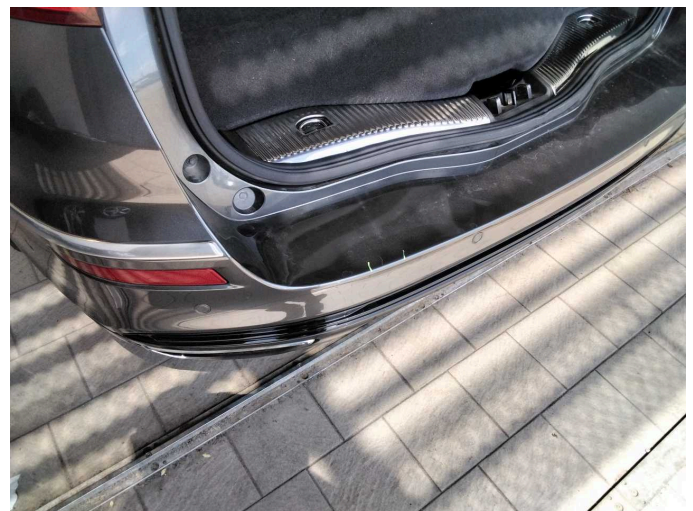
Figure 27: Misc.



Figure 28: Misc.



Damage 1: Equipment: Tirefit filler - Expired - Replace



Damage 2: Rear bumper: Rear bumper - Scratch(es) - Smart repair



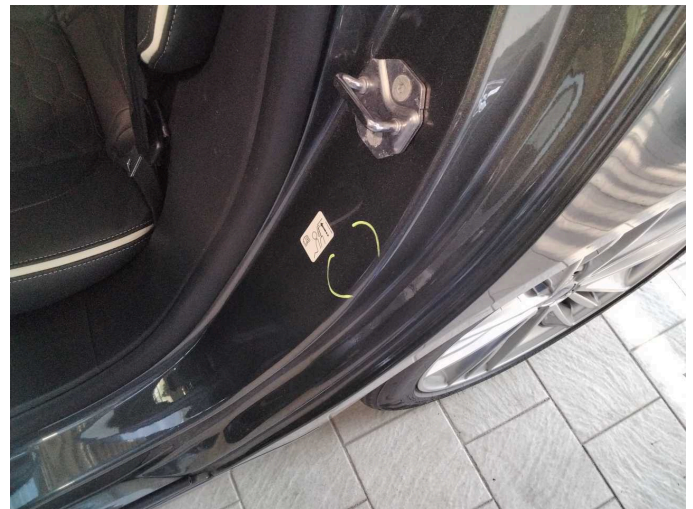
Damage 2: Rear bumper: Rear bumper - Scratch(es) - Smart repair



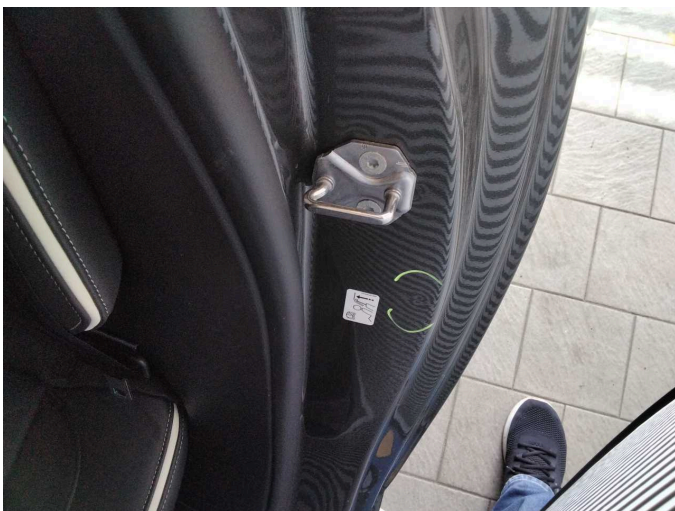
Damage 3: Side panel - rear right side: Sill - Scratch(es) - Smart repair



Damage 3: Side panel - rear right side: Sill - Scratch(es) - Smart repair



Damage 4: Body: C-pillar - left side - dent(s) - Smart repair



Damage 4: Body: C-pillar - left side - dent(s) - Smart repair



Damage 5: Roof: Roof rail - left side - Scratch(es) - Smart repair



Damage 5: Roof: Roof rail - left side - Scratch(es) - Smart repair



Wear and tear 1: Vehicle glazing: Windscreen - Stone chips - No deduction



Wear and tear 2: Bonnet: Bonnet - Stone chips - No deduction



Wear and tear 3: Front bumper: Front bumper - Stone chips - No deduction