

## Expertise

Protocol number: 46313399  
Order No. / Reference: 26536906  
Inspection date: 2 Jul 2026

Manufacturer: Volkswagen

Model: Tiguan Allspace 2.0 TDI SCR DSG Life

VIN: WVGZZZ5N0PM012959



### Vehicle details

#### Manufacturer / Type / Model / Equipment

Volkswagen Tiguan Allspace 2.0 TDI SCR DSG Life

**Vehicle Identification number** WVGZZZ5N0PM012959

**Mileage (Read)** 172,569 km

**First registration** 5 Apr 2023

**Number of holders** 1

**Power / Engine displacement** 110 kw / 1,968 ccm

**Fuel type / Cylinder** Diesel / 4

**Gearbox / Number of gears** Automatic / 7

**Type of drive** Front drive

**Type of vehicle** SUV

**Colour / colour code** Deep Black Perleffekt

**Doors / Seats** 5 / 5

**Upholstery type** Alcantara / cloth

**Colour of upholstery** Black-Anthracite



## Vehicle details

<b>Maintenance booklet / proof</b>	digital proof / complete	<b>Next maintenance in</b>	3,500 km
<b>Last service on / at</b>	10/2025 at 149,287 km		
<b>Key is / should be</b>	2 / 2	<b>FZG documents</b>	ZB#2 (B) was available (copy), ZB#1 (S) was not available.
		<b>Letter No.</b>	GM797766
<b>Previous damage / Accident</b>	Detectable	<b>Repainting</b>	Detectable
<b>Inspection conditions</b>	sufficient	<b>Lifting equipment / pit</b>	yes
<b>Test drive</b>	Not performed	<b>Engine function test</b>	Performed
<b>Manufacturer key number/ type code number</b>	0603 / BZG 02349		
<b>Emission standard</b>	EURO6;WLTP;AG;PI/CI; M, N1 I	<b>fine dust sticker</b>	
<b>Permitted total weight</b>	2,270 kg	<b>Empty weight</b>	

## Tyres

Mounted tyres				
#	Tyre size	Type of tyre	Manufacturer	Tread depth
1)	215/65 R17 103H	Winter tyres on Light alloy	Bridgestone	5mm / 5mm
2)	215/65 R17 103H	Winter tyres on Light alloy	Bridgestone	6mm / 6mm
Additional tyres				
#	Tyre size	Type of tyre	Manufacturer	Tread depth
1)	235/55 R18 100V	Summer tyres on Light alloy	Continental	3mm / 3mm
2)	235/55 R18 100V	Summer tyres on Light alloy	Continental	4mm / 4mm

**Legend: Tread depth information for the left tire is listed first, for the right tire it is listed second on the axle in the direction of travel.**



## Equipment

### Standard equipment

- Storage compartments in the overhead console
- Airbag, head airbag system including front side airbags
- Adaptive Cruise Control (ACC) "stop & go" with speed limiter
- third brake light
- Chrome trim on the side windows
- Silver anodized roof rails
- Diesel particulate filter
- Parking assistance
- Electronic parking brake including auto-hold function
- Automatic headlight control, with daytime running lights
- High beam control Light Assist
- Pedestrian detection
- Luggage compartment lighting
- Transmission: 7-speed DSG
- Rear window heated
- Rear window wiper with intermittent function
- ISOFIX mounting points, also for i-Size child car seats
- Air conditioning system "Air Care Climatronic"
- Front headrests
- Steering wheel: Multifunction steering wheel in leather, with paddle shifters
- Illuminated makeup mirrors in the sun visors
- Fatigue detection
- Emergency braking assistant "Front Assist"
- Upholstery: Cloth
- Radio
- Radio accessories: 8 speakers
- Rain sensor
- Wheels: AirStop tires 235/55 R 18, optimized for low rolling resistance
- Gearshift knob in leather
- electromechanical power steering
- Seats: Front passenger seat backrest folds down completely
- Seats: Lumbar support in the front
- Lane keeping assistant "Lane Assist"
- 12-volt socket
- Bumpers in body color
- Textile floor mats front and rear
- Prepared for later activation: Navigation function "Discover Media" incl. "Streaming & Internet"
- Central locking without safe locking, with remote control and 2 remote keys
- Airbag for driver and front passenger including knee airbag on the driver's side
- Electrically adjustable and heated exterior mirrors
- Exterior mirror housings painted silver
- Chrome applications on mirror adjustment switches, window regulator switches, door pull handles
- Decorative inlays "Horizon Black"
- Display: Digital Cockpit Pro, multicolor, various selectable info profiles
- Electronic Stability Program with counter-steering support
- Electric windows front and rear
- Windscreen made of laminated safety glass, heat and sound insulating
- Luggage compartment floor height adjustable in 2 stages
- Tailgate with electric opening and closing, adjustable opening angle
- Interior mirror automatically dimming
- LED license plate lighting
- Rear headrests (3)
- LED headlights
- Reading lights: 2 front and 2 rear
- Light in the front footwell
- front center armrest
- Non-smoking version
- Emergency call service
- Proactive occupant protection system in conjunction with "Front Assist"
- Radio accessories: Digital radio reception DAB+
- Tire pressure monitoring system
- Wheels: Tire Mobility Set omitted
- Wheels: Light alloy (4) "Frankfurt" 7 J x 18
- Drawers under the front seats
- Seat belts: Three-point automatic seat belts at the front with height adjustment and belt tensioner
- Seats: Comfort seats in the front
- Seats: Front seats with height adjustment
- Start-stop system with brake energy recuperation
- Power outlet: 2 USB-C ports on the front
- Telephone interface
- First aid kit, warning triangle and high-visibility vest
- Electronic immobilizer
- Green thermal insulation glazing, sides and rear



### Extra equipment

- 230 volt socket
- Electrically adjustable, folding and heated exterior mirrors (with passenger-side mirror lowering function)
- Mesh partition
- Navigation system "Discover Pro" incl. "Streaming & Internet" (8 speakers - App-Connect incl. App-Connect Wireless for Apple CarPlay and Android Auto - Digital radio reception DAB+ - Navigation system "Discover Pro" incl. "Streaming & Internet" - Radio - Voice control - Traffic sign recognition)
- Package: Business Premium incl. Navigation (DSG) (2 USB-C ports in the front, 1 USB-C charging port on the rear center console - Head-up display - Leather multifunction steering wheel, heated, with shift paddles - Automatically heated windshield washer nozzles in the front - Voice control - "Comfort" telephone interface with inductive charging function - Heated front seats)
- Paint finish: Pearl effect
- Surround view "Area View" (incl. reversing camera "Rear View")
- Windows: Rear side windows and rear window tinted
- Anti-theft alarm system with safe locking (anti-theft alarm system with interior monitoring, backup horn and tow-away protection, central locking with safe locking, remote control and 2 remote folding keys)
- Package: "Easy Open & Close" with safe locking mechanism ("Easy Open & Close" - tailgate with sensor-controlled opening and closing, with remote unlocking - keyless locking and starting system "Keyless Access" with safe locking mechanism)
- Package: Driver assistance package "Plus" without "Side Assist" and proactive occupant protection system (Driving assistant "Travel Assist", lane keeping assistant "Lane Assist" and "Emergency Assist" - parking steering assistant "Park Assist" incl. parking aid - traffic sign recognition)
- Seats: ergoActive front seats (front passenger seat backrest not foldable - ergoActive front seats height-adjustable, seat and backrest tilt adjustable, thigh support longitudinally adjustable - front lumbar support electrically adjustable and with massage function - seat center panels of the front seats and the outer rear seats in microfleece "ArtVelours" - top comfort seats in front)

### Brief expert findings

Documents submitted	At the time of the inspection, the vehicle registration certificate Part 2 (title) was available, but the vehicle registration certificate Part 1 (document) was not. (Copy)
VIN comparison	The vehicle identification number (VIN) was read from the vehicle and its conformity with the submitted documents was confirmed by the undersigned during the inspection.
Inspection	The inspection conditions were sufficient for the assessment of the vehicle. Lifting equipment and/or a pit were available for examining the vehicle.
Test drive	No test drive/shunting maneuver was carried out during the inspection of the vehicle.
Engine function test	An engine test run was performed.

### Value reducing factors

No.	Component group	Description
1	Misc.	Main inspection - No evidence - No deduction
2	Trim / covers	Floor mats - Broken / torn - Replace
3	Wing mirror - left side	Cap - Scratch(es) - Smart repair
4	Wing mirror - right side	Cap - Scratch(es) - Smart repair
5	Side panel - rear right side	Side panel - dent(s) - Smooth repair work
6	Door - front right side	Door - dent(s) - Smooth repair work
7	Front bumper	Front bumper - Scratched - Smart repair
8	Rear bumper	Rear bumper - Scratched - Paint
9	Bonnet	Bonnet - Dent / paintcoat damage - Repair and paint
10	Vehicle glazing	Windscreen (Rissbildung) - Stone chips - Replace
11	Roof	Roof - Corrosion - Repair and paint



## Wear and tear

No.	Component group	Description
1	Door - front left side	Door - Scratch(es) - No deduction
2	Door - rear right side	Door - Scratch(es) - No deduction

The vehicle shows signs of wear and tear commensurate with its age and use.

## Previous damages

No.	Previous damage	Extent of damage (Net)
1	Front, Provided by user / customer, from 29 Aug 2024	1.389,44 €

## Repainting

No.	Repainting
1	Side panel - rear left side, Professionally carried out, Invoice of repair done Non-existent

## Paint coat thickness measurement

Side panel - rear left side	145 µm
-----------------------------	--------

## Order/Scope of Order

An order was placed to prepare a sales report for the described vehicle. This report includes the following:

- Description of key vehicle information
- Documentation of equipment features  
(*Delivery by third-party service providers*)
- Documentation of damage, defects, missing parts
- Documentation of prior damage, unrepaired prior damage, repainting
- A brief visual or functional inspection of the equipment details, if possible.  
(*Functional testing of driver assistance systems is not included in the scope of services!*)
- a photographic documentation of the vehicle

## Basis for the order

This product is based on the guidelines for vehicle returns and valuations published by Alphabet Fleet GmbH. The expert makes the specific findings in each individual case objectively, within the framework of the prescribed standards, based on their own expertise.

The vehicle inspection takes place in a fully assembled, unassembled state.

Damage or defects that can only be detected during disassembly/diagnostic work or through further investigation remain within the realm of prognostic risk. An increased risk exists due to concealed defects caused by fraudulent misrepresentation and which were not identifiable by the expert.

Damage or defects resulting from normal use or wear and tear of the vehicle will be accepted in accordance with the applicable standard.

There was no explicit identification or monetary consideration of the expected features within the product.

Features which, in their nature and extent, slightly exceed normal use but do not constitute unacceptable damage, will be documented and indicated as signs of wear, if applicable.

Damage or defects that, according to the applicable standard, can no longer be attributed to normal use or wear and tear are listed under "Value Reducing Factors" in the product description.

Depending on the product specification, a monetary ID can be provided. If this takes place, the costs can be 100% d or pro rata depending on the vehicle's age and mileage.



## Previous damages

According to available information previous damages were repaired at the vehicle. Traces of repairs, which allow conclusions about the area of repair, were not recognizable during the inspection.

## Comments

- Der Winterradsatz ist kein Bestandteil der Ausstattungsliste.



Figure 1: Diagonal front (left)



Figure 2: Diagonal front (right)



Figure 3: Diagonal rear (left)



Figure 4: Diagonal rear (right)

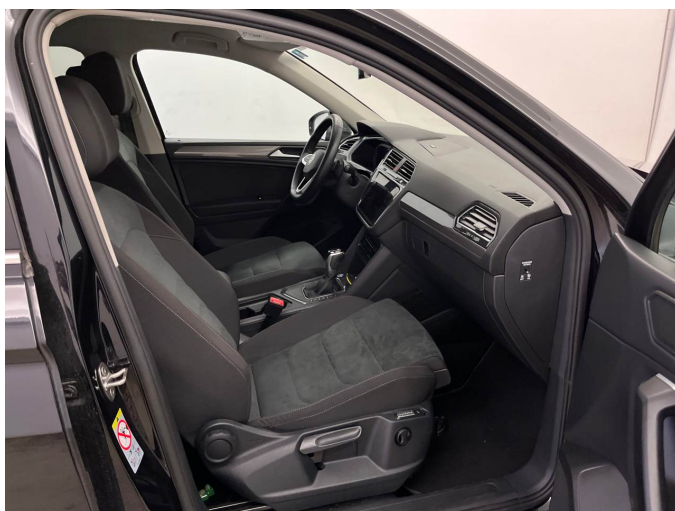


Figure 5: Interior - front

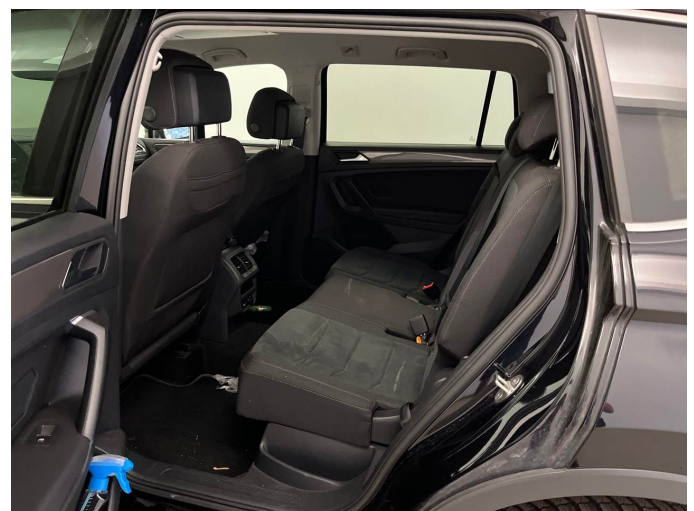


Figure 6: Interior - rear



Figure 7: Instrument cluster



Figure 8: Instrument panel



Figure 9: Interior 360° view



Figure 10: Cargo area

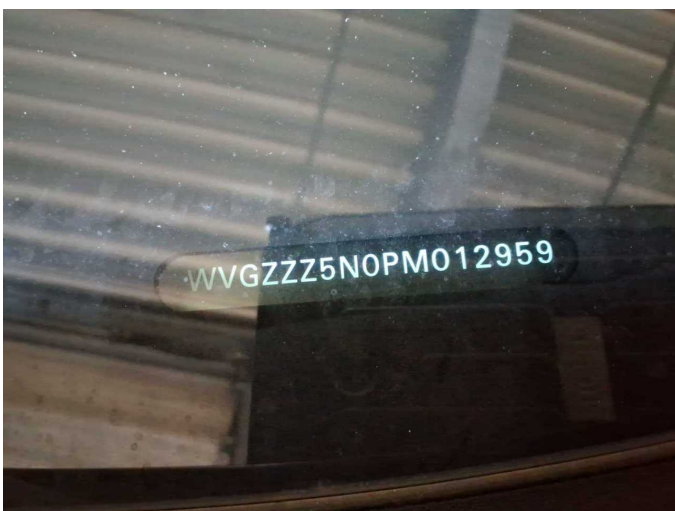


Figure 11: VIN



Figure 12: Mounted tyres

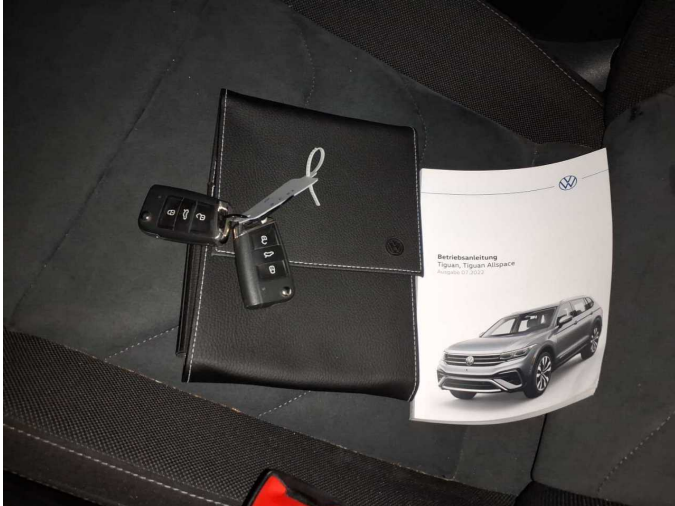


Figure 13: Documents



Figure 14: Additional tyres

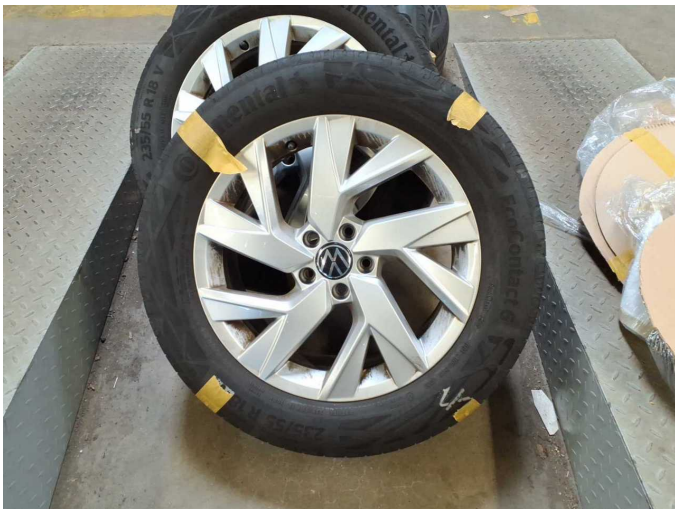


Figure 15: Additional tyres



Figure 16: Navigation



Figure 17: Misc.



Figure 18: Misc.

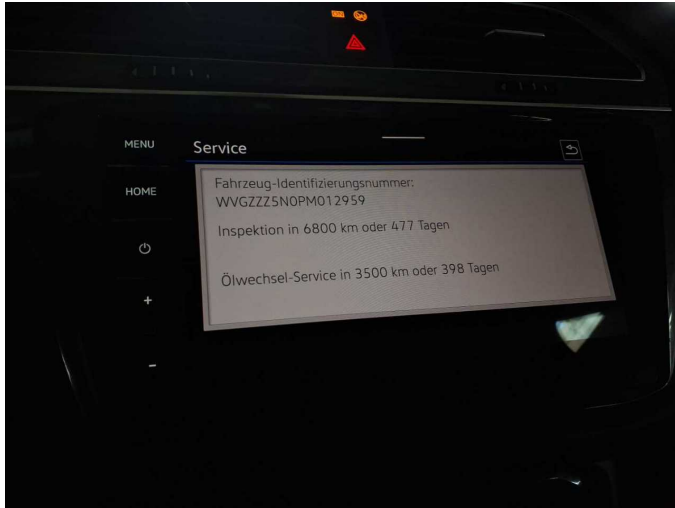


Figure 19: Misc.



Figure 20: Misc.

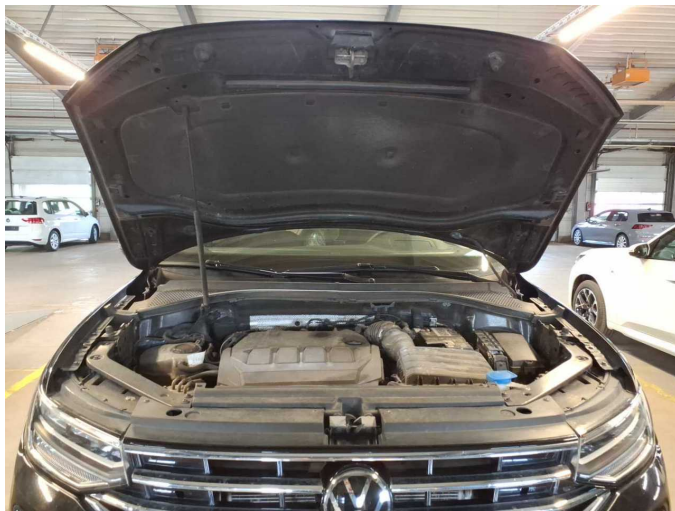


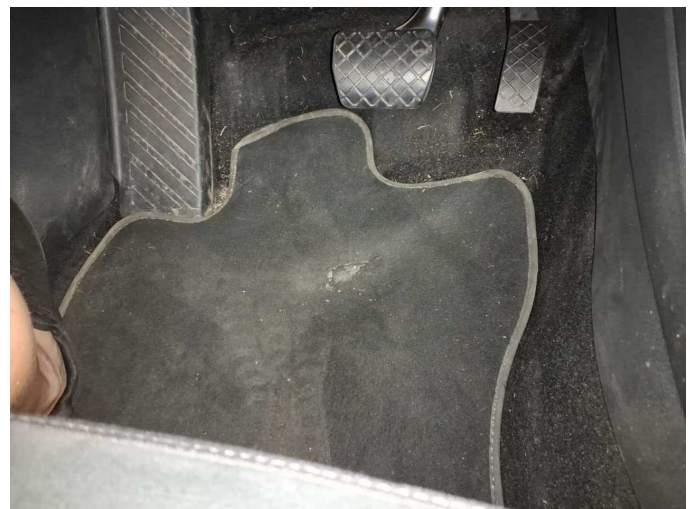
Figure 21: Misc.



Figure 22: Misc.



Figure 23: Misc.



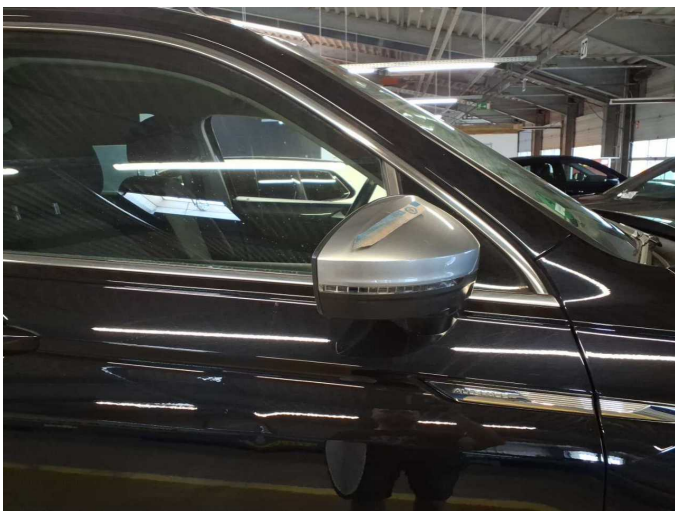
Damage 2: Trim / covers: Floor mats - Broken / torn - Replace



**Damage 3:** Wing mirror - left side: Cap - Scratch(es) - Smart repair



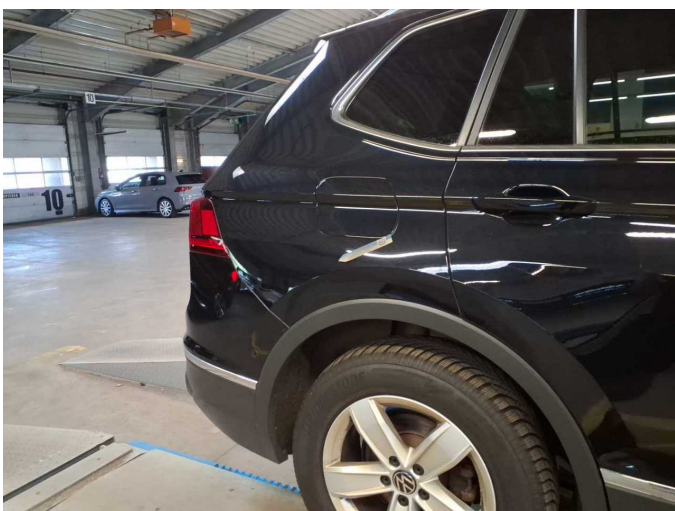
**Damage 3:** Wing mirror - left side: Cap - Scratch(es) - Smart repair



**Damage 4:** Wing mirror - right side: Cap - Scratch(es) - Smart repair



**Damage 4:** Wing mirror - right side: Cap - Scratch(es) - Smart repair



**Damage 5:** Side panel - rear right side: Side panel - dent(s) - Smooth repair work



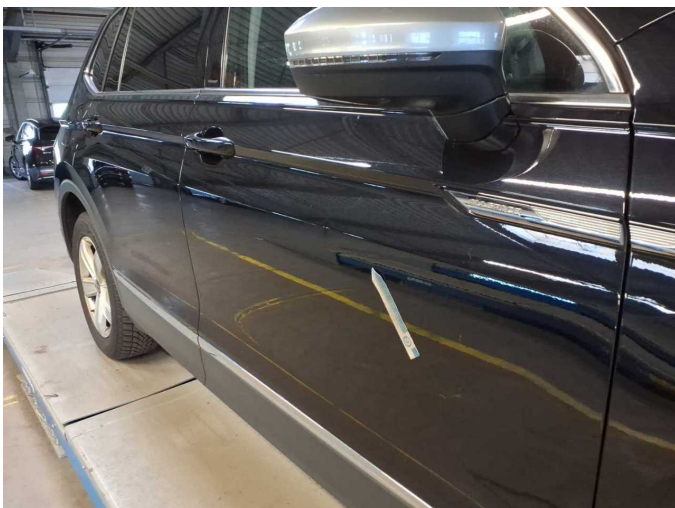
**Damage 5:** Side panel - rear right side: Side panel - dent(s) - Smooth repair work



**Damage 6:** Door - front right side: Door - dent(s) - Smooth repair work



**Damage 6:** Door - front right side: Door - dent(s) - Smooth repair work



**Damage 6:** Door - front right side: Door - dent(s) - Smooth repair work



**Damage 6:** Door - front right side: Door - dent(s) - Smooth repair work



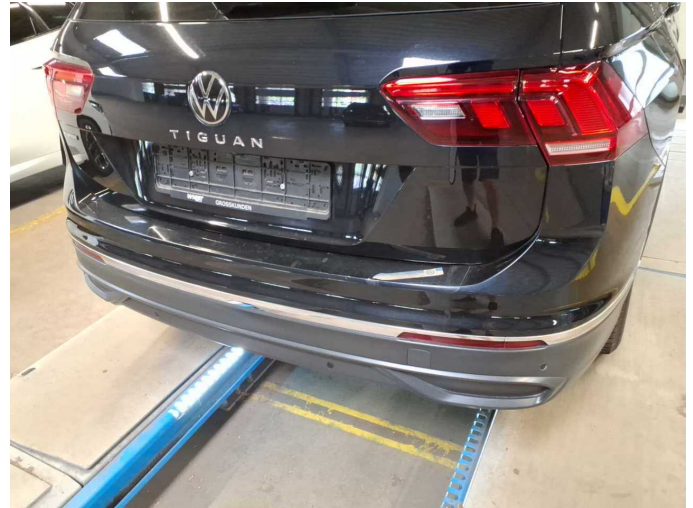
**Damage 7:** Front bumper: Front bumper - Scratched - Smart repair



**Damage 7:** Front bumper: Front bumper - Scratched - Smart repair



**Damage 7:** Front bumper: Front bumper - Scratched - Smart repair



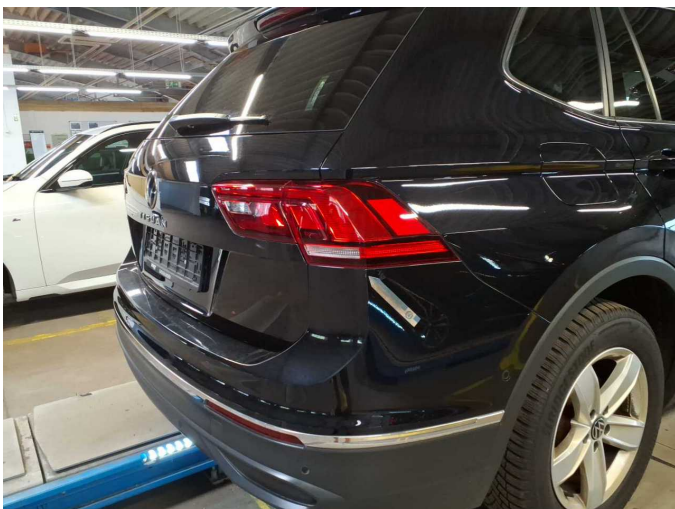
**Damage 8:** Rear bumper: Rear bumper - Scratched - Paint



**Damage 8:** Rear bumper: Rear bumper - Scratched - Paint



**Damage 8:** Rear bumper: Rear bumper - Scratched - Paint



**Damage 8:** Rear bumper: Rear bumper - Scratched - Paint



**Damage 8:** Rear bumper: Rear bumper - Scratched - Paint



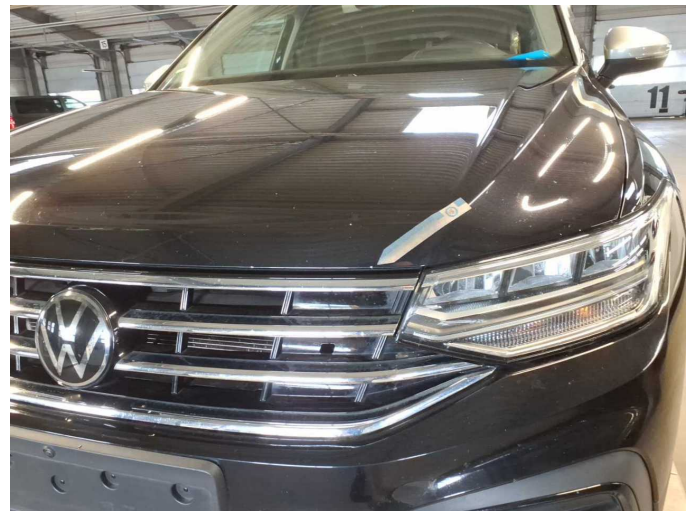
**Damage 9:** Bonnet: Bonnet - Dent / paintcoat damage - Repair and paint



**Damage 9:** Bonnet: Bonnet - Dent / paintcoat damage - Repair and paint



**Damage 9:** Bonnet: Bonnet - Dent / paintcoat damage - Repair and paint



**Damage 9:** Bonnet: Bonnet - Dent / paintcoat damage - Repair and paint



**Damage 9:** Bonnet: Bonnet - Dent / paintcoat damage - Repair and paint



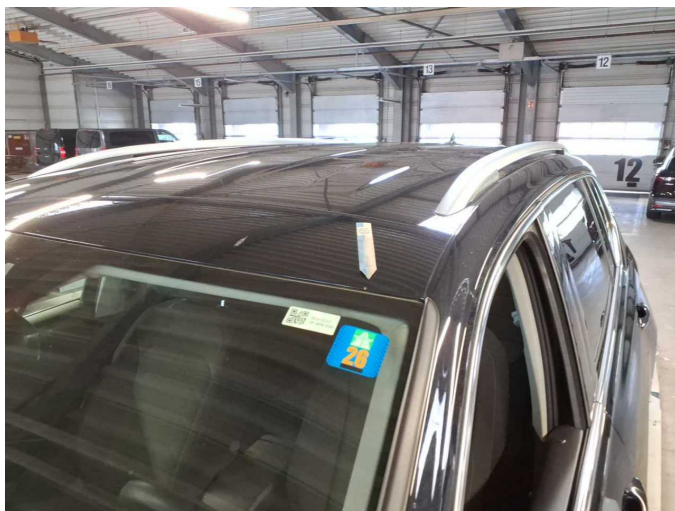
**Damage 10:** Vehicle glazing: Windscreen (Rissbildung) - Stone chips - Replace



**Damage 10:** Vehicle glazing: Windscreen (Rissbildung) - Stone chips - Replace



**Damage 10:** Vehicle glazing: Windscreen (Rissbildung) - Stone chips - Replace



**Damage 11:** Roof: Roof - Corrosion - Repair and paint



**Damage 11:** Roof: Roof - Corrosion - Repair and paint



**Repainting 1:** Side panel - rear left side



# Wartungshistorie

(gemäß Auftraggeber Informationen)

Fahrgestellnummer: WVGZZZ5N0PM012959  
Hersteller / Modell: VOLKSWAGEN VOLKSWAGEN Tiguan Allspace 2.0 TDI SCR  
DSG Life

Datum	KM-Stand	Beschreibung
03.03.2026	167.964	Systemtest/Eigendiagnose
27.11.2025	152.037	Reparatur Sonstiges; Reparatur Sonstiges; Systemtest/Eigendiagnose; Wartung Sonstiges
22.10.2025	149.287	Bremse Sonstiges; Bremsklötze hinten; Bremsklötze vorne; Bremsscheiben + Klötze v; Bremsscheiben vorne; Getriebeöl ern/prüfen; Motoröl b. Wartung; Ölfilter ern; Regelwartungsdienst; Wartung Sonstiges
14.04.2025	117.552	Bremsflüssigkeit; Bremsflüssigkeit ern; Getriebeöl ern/prüfen; Luftfiltereinsatz ern; Motoröl b. Wartung; Ölfilter ern; Regelwartungsdienst; Wartung Sonstiges
28.11.2024	96.999	Bremse Sonstiges; Bremsklötze hinten; Bremsklötze vorne
03.09.2024	87.433	Kraftstofffilter ern; Motoröl b. Wartung; Ölfilter ern; Regelwartungsdienst; Systemtest/Eigendiagnose; Wartung Sonstiges
18.04.2024	61.111	Regelwartungsdienst; Wartung Sonstiges
05.03.2024	53.943	Bremse Sonstiges; Bremsklötze hinten; Bremsklötze vorne; Bremsscheiben vorne; Motoröl b. Wartung; Ölfilter ern; Ölwechsel; Wartung Sonstiges
17.10.2023	29.493	Motoröl b. Wartung; Ölfilter ern; Regelwartungsdienst; Wartung Sonstiges