

Expertise

Protocol number: 46132432
Order No. / Reference: 26317114
Inspection date: 23 Jun 2026

Manufacturer: Ford

Model: Focus Turnier 2.0 EcoBlue Start-Stopp-System Aut. TITANIUM X

VIN: WF0PXXGCHPMJ29581



Vehicle details

Manufacturer / Type / Model / Equipment

Ford Focus Turnier 2.0 EcoBlue Start-Stopp-System Aut. TITANIUM X

Vehicle Identification number WF0PXXGCHPMJ29581

Mileage (Read) 198,346 km

First registration 8 Apr 2021

Number of holders 1

Power / Engine displacement 110 kw / 1,995 ccm

Fuel type / Cylinder Diesel / 4

Gearbox / Number of gears Automatic / 8

Type of drive Front drive

Type of vehicle Station wagon

Colour / colour code White University

Doors / Seats 5 / 5

Upholstery type Cloth

Colour of upholstery Anthracite-Black

Vehicle with smoke odor no

TÜV SÜD Auto Partner GmbH
Wiesenring 2
04159 Leipzig

Inspection location
Mosolf SE & Co.KG
Faberweg 25
73230 Kirchheim unter Teck



Equipment



Standard equipment

- Airbag: Passenger airbag deactivation
- Anti-lock braking system (ABS) with electronic brake force distribution (EBD)
- Attachment points behind the second row of seats (for safety partition nets and safety partition grilles, e.g. for luggage compartment partition grilles behind the rear seats)
- Overhead console with glasses storage compartment
- Roof spoiler painted in car color
- Digital instrument panel 12.3" (31.2 cm screen diagonal)
- Front door sill trim
- Driver information system (on-board computer with fuel consumption and mileage information as well as outside temperature display (monochrome in the Trend trim) - color)
- Electric parking brake with auto-hold function (with one-button operation)
- Ford Power Start function (with Ford Key Free system - keyless locking/unlocking)
- Luggage compartment lighting
- Luggage compartment floor, adjustable in two ways
- Speed limiter (Intelligent speed limiter with speed limit display)
- Cruise control
- Transmission: 8-speed automatic transmission
- Illuminated glove compartment
- Tailgate, electric and sensor-controlled (opening and closing via foot movement - Ford Key Free system (keyless unlocking/locking))
- Interior lighting with LED technology (front and rear and map reading lights at the front)
- Isofix mounting (including top tether anchor points on the outer seats of the 2nd row)
- Headrests: 2 front and 3 rear, height adjustable
- Paint finish: Solid
- Charging station for mobile devices (inductive)
- LED taillights
- Steering wheel: Leather steering wheel, 3-spoke design
- Rear center armrest (with 2 cup holders)
- Center console "Premium" front (armrest - 2 cup holders - storage compartments - 12-volt and USB connection)
- Fog lights (including static cornering lights)
- Emergency brake light (pulsating illumination of the brake lights during hard braking)
- Package: Family (rear seat backrest with ski pass-through - rear center armrest with 2 cup holders - electric child safety locks for doors - manually height-adjustable front passenger seat with adjustable lumbar support)
- Package: Comfort (2-zone automatic climate control for driver and front passenger side, separately adjustable - Ford Key Free system (keyless locking/unlocking) including Ford Power Start function (keyless starting) - Windscreen wipers with rain sensor, variable sensitivity adjustment - Interior mirror, automatically dimming - Headlights with delayed shut-off)
- Ambient lighting in the front (including door storage, footwell and cup holder lighting with LED technology)
- Exterior mirrors in body color, driver and passenger side, electrically adjustable and heated (with integrated turn signals and ambient lighting and electrically foldable)
- Chrome trim (on side windows)
- Fabric headliner
- Roof rails, aluminum
- Diesel particulate filter (DPF)
- Tachometer
- Electronic Stability Program (ESP) (with hill start assist, emergency brake assist (EBA) and traction control)
- Driving mode switch, selective
- Lane keeping assist including lane keeping assist
- Electric front and rear windows (with all-around closing function)
- Ford ECO-Coach (signals environmentally friendly driving style)
- FordPass Connect including eCall, live traffic information (only with navigation) and Wi-Fi hotspot (information about the current status or location of the vehicle as well as control of selected vehicle functions via smartphone with the FordPass app - eCall emergency call system to send an emergency call in the event of an accident or when manually activated - Real-time traffic information (only in conjunction with navigation system) - Wi-Fi hotspot (up to 4G/LTE7, for up to 10 mobile devices))
- Back window, heater
- rear window wiper
- Instrument lighting, adjustable
- Intelligent safety system (front airbag for driver and front passenger - front and rear head and shoulder airbags - side airbag for driver and front passenger - seat belt tensioners and force limiters in the front and on the outer seats of the 2nd row - 3-point seat belts on all seats, height-adjustable in the front - safety pedal assembly)
- LED daytime running lights
- Steering column, adjustable (adjustable in height and reach)
- MyKey key system (individually programmable second key)
- Navigation: Ford Navigation, Ford SYNC 3 with AppLink, 8" touchscreen (20.3 cm) with DAB/DAB+ (Ford SYNC 3 communication and entertainment system with voice control, radio, 2 USB ports, 6 speakers and steering wheel remote control, Bluetooth hands-free calling and audio streaming, SMS reading and sending option, voice control for audio and telephone, support for Android Auto and Apple CarPlay, dynamic navigation with TMCpro, road map for Europe, voice control, destination input and search, advanced voice output, detailed visualization, Michelin travel guide for Europe)
- Visibility package (windscreen wipers with rain sensor, adjustable sensitivity - interior mirror, automatically dimming - headlights with delayed shut-off)
- Front and rear parking pilot system
- Upholstery: Cloth



- Pollen filter and dust filter
- Post-Collision Assist (In the event of a severe collision, which would also deploy the airbag and in which the driver might be incapacitated, this system initiates the braking process. This reduces the risk of colliding with further obstacles and road users after the initial collision. The driver can intervene and operate the accelerator or brake pedal manually throughout the entire process.)
- Headlight dipped beam (with switch-off delay)
- Headlight assistant with day/night sensor
- Side windows from the 2nd row of seats and rear window, dark tinted.
- Seats: Passenger seat height-adjustable, manually (with adjustable lumbar support)
- Seats: Rear seat backrest (foldable, 60:40 split with ski pass-through)
- 12-volt power outlet in the luggage compartment
- Child safety lock on sliding doors
- Warning system for unfastened seat belts for the 1st and 2nd rows of seats
- Central/double locking (incl. remote control, remote luggage compartment and fuel filler flap release, door lock only on driver's side)

Extra equipment

- Anti-theft alarm system including double locking and interior monitoring
- Package: Easy Parking Package Plus (Active Parking Assist with parking and exit function and semi-automated vehicle guidance - Blind Spot Assist and Cross Traffic Alert with emergency braking function (when reversing out of a parking space) - Door edge protection)
- Package: Winter (heated windscreen - heated steering wheel - individually and variably heated front seats)
- Paint finish: Frost White
- Radio: B&O Sound System (675 Watt premium sound system with 10 speakers - including subwoofer based on the renowned sound and design expertise of Bang & Olufsen)
- Seats: Ford ergonomic seat with fabric upholstery (front seats adjustable in 18 ways: - length, height and tilt of the seat, extendable thigh support - adjustable backrest - lumbar support electrically adjustable in 4 ways - headrest adjustable in 4 ways)

- Pre-Collision Assist (Forward Alert system with pedestrian and bicycle detection)
- Tire repair kit (for use at a maximum speed of 80 km/h)
- Tire Pressure Monitoring System (TPMS)
- Reversing camera with "Split View" technology (with image transmission of the road behind in the TFT color display - thanks to the "Split View" technology, the field of vision in the new Ford Focus is further expanded and allows you to see what is coming towards you from both sides of the vehicle behind)
- Electro-mechanical power steering (EPAS - Electric Power Assisted Steering)
- Seats: Driver's seat height adjustable (with manually adjustable lumbar support)
- Start-stop system
- Carpet floor mats front and rear, velour
- Lashing eyes in the luggage compartment
- Electronic immobilizer
- Heat-insulating glazing, tinted
- Additional heating

- 2 kg powder fire extinguisher
- 3. Key
- Adaptive LED headlights with glare-free high beam assist and camera-based cornering lights (Intelligent light cone, camera-controlled - Automatic headlight range control - Sequential LED turn signals, front - LED taillights)
- Attachment points behind the first row of seats (according to ISO 27955 - for safety partition grilles (available as an accessory from your Ford dealer))
- Package: Technology II (Traffic Jam Assist with Stop & Go function - Lane Keeping Assist - Intelligent Adaptive Cruise Control (iACC) with traffic sign recognition - Wrong-way driver warning - Evasive Steering Assist (ESA) - High Beam Assist (in conjunction with intelligent LED headlights with glare-free high beam assist) - Driver Alert System)
- Safety partition net to separate passenger and luggage compartments
- Swiveling towbar (incl. ESP trailer stabilization)

Brief expert findings

Documents submitted	At the time of the inspection, the vehicle registration certificate Part 2 (title) was available, but the vehicle registration certificate Part 1 (document) was not. (Copy)
VIN comparison	The vehicle identification number (VIN) was read from the vehicle and its conformity with the submitted documents was confirmed by the undersigned during the inspection.
Inspection	The inspection conditions were sufficient for the assessment of the vehicle. Lifting equipment and/or a pit were available for examining the vehicle.
Test drive	No test drive/shunting maneuver was carried out during the inspection of the vehicle.
Engine function test	An engine test run was performed.



Value reducing factors

No.	Component group	Description
1	Misc.	Main inspection - No evidence - No deduction
2	Equipment	Vehicle key with remote control (Batterie) - Empty - Replace
3	Equipment	Tirefit filler - Expired - Replace
4	Front bumper	Front bumper (Blenden) - Damaged - Replace
5	Mudguard - right side	Mudguard - right side - Scratch(es) - Smart repair
6	Door - front right side	Door - Scratch(es) - Smart repair
7	2nd wheel set	2 tyres (einseitig abgefahren) - Worn - Replace
8	2nd wheel set	1 alloy rim - Scratched - Replace
9	Misc.	Inspection / maintenance - Due - Perform
10	Front bumper	Front bumper - Scratch(es) - Paint

Wear and tear

No.	Component group	Description
1	Misc.	Inspection / maintenance - No evidence - No deduction
2	Vehicle glazing	Windscreen - Stone chips - No deduction
3	Bonnet	Bonnet - Stone chips - No deduction
4	Door - front left side	Door - Scratch(es) - No deduction
5	Wheel / tyres	Alloy rim - front right side - Scratch(es) - No deduction
6	Roof	Roof rail - right side - dent(s) - Smooth repair work
7	Side panel - rear left side	Sill - Scratch(es) - Cover / polish
8	Side panel - rear right side	Sill - Scratch(es) - Cover / polish
9	Side panel - rear right side	Elbow - dent(s) - Smooth repair work
10	Door - rear right side	Door (Türkanten schutz) - Broken / torn - No deduction

The vehicle shows signs of wear and tear commensurate with its age and use.

Missing parts

Description

Documents - Service book

Previous damages

No.	Previous damage	Extent of damage (Net)
1	Front, Provided by user / customer, from 2 Jun 2022	1.270,75 €

Paint coat thickness measurement

Bonnet 87 µm |



Order/Scope of Order

An order was placed to prepare a sales report for the described vehicle. This report includes the following:

- Description of key vehicle information
- Documentation of equipment features
(Delivery by third-party service providers)
- Documentation of damage, defects, missing parts
- Documentation of prior damage, unrepaired prior damage, repainting
- A brief visual or functional inspection of the equipment details, if possible.
(Functional testing of driver assistance systems is not included in the scope of services!)
- a photographic documentation of the vehicle

Basis for the order

This product is based on the guidelines for vehicle returns and valuations published by Alphabet Fleet GmbH. The expert makes the specific findings in each individual case objectively, within the framework of the prescribed standards, based on their own expertise.

The vehicle inspection takes place in a fully assembled, unassembled state.

Damage or defects that can only be detected during disassembly/diagnostic work or through further investigation remain within the realm of prognostic risk. An increased risk exists due to concealed defects caused by fraudulent misrepresentation and which were not identifiable by the expert.

Damage or defects resulting from normal use or wear and tear of the vehicle will be accepted in accordance with the applicable standard.

There was no explicit identification or monetary consideration of the expected features within the product.

Features which, in their nature and extent, slightly exceed normal use but do not constitute unacceptable damage, will be documented and indicated as signs of wear, if applicable.

Damage or defects that, according to the applicable standard, can no longer be attributed to normal use or wear and tear are listed under "Value Reducing Factors" in the product description.

Depending on the product specification, a monetary ID can be provided. If this takes place, the costs can be 100% or pro rata depending on the vehicle's age and mileage.

Previous damages

According to available information previous damages were repaired at the vehicle. Traces of repairs, which allow conclusions about the area of repair, were not recognizable during the inspection.

Comments

Das Fahrzeug weist der Laufzeit entsprechende Gebrauchsspuren auf.

Winter - Radsatz ist kein Bestandteil des Lieferumfangs.



Figure 1: Diagonal front (left)



Figure 2: Diagonal front (right)



Figure 3: Diagonal rear (left)



Figure 4: Diagonal rear (right)



Figure 5: Interior - front



Figure 6: Interior - rear



Figure 7: Instrument cluster



Figure 8: Instrument panel



Figure 9: Interior 360° view



Figure 10: Cargo area



Figure 11: VIN

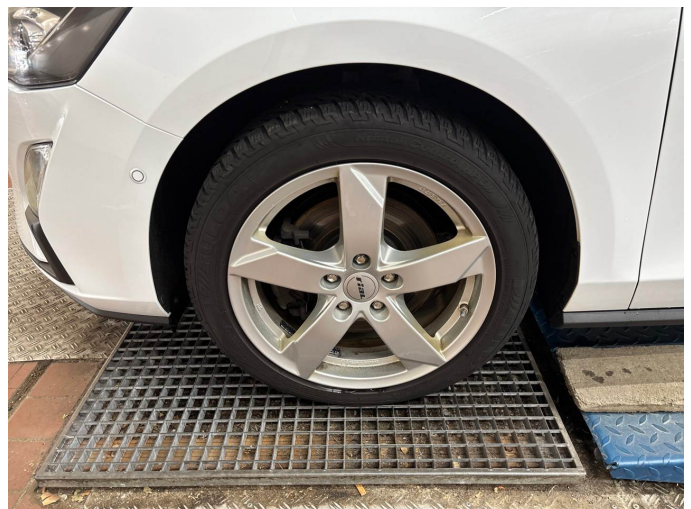


Figure 12: Mounted tyres

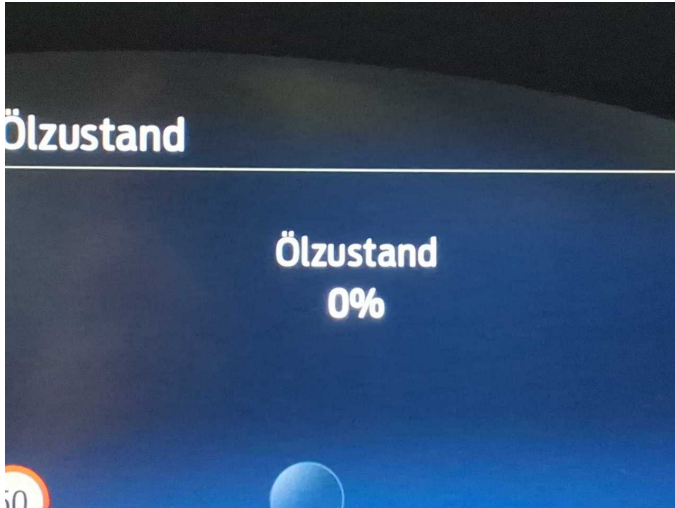


Figure 13: Documents



Figure 14: Documents



Figure 15: Additional tyres



Figure 16: Navigation



Figure 17: Misc.



Figure 18: Misc.



Figure 19: Misc.



Figure 20: Misc.



Figure 21: Misc.



Figure 22: Misc.



Figure 23: Misc.



Figure 24: Misc.



Figure 25: Misc.



Figure 26: Misc.



Figure 27: Misc.



Figure 28: Misc.



Figure 29: Misc.



Figure 30: Misc.



Figure 31: Misc.



Damage 2: Equipment: Vehicle key with remote control (Batterie) - Empty - Replace



Damage 3: Equipment: Tirefit filler - Expired - Replace



Damage 4: Front bumper: Front bumper (Blenden) - Damaged - Replace



Damage 4: Front bumper: Front bumper (Blenden) - Damaged - Replace



Damage 4: Front bumper: Front bumper (Blenden) - Damaged - Replace



Damage 4: Front bumper: Front bumper (Blenden) - Damaged - Replace



Damage 5: Mudguard - right side: Mudguard - right side - Scratch(es) - Smart repair



Damage 5: Mudguard - right side: Mudguard - right side - Scratch(es) - Smart repair



Damage 6: Door - front right side: Door - Scratch(es) - Smart repair



Damage 6: Door - front right side: Door - Scratch(es) - Smart repair



Damage 7: 2nd wheel set: 2 tyres (einseitig abgefahren) - Worn - Replace



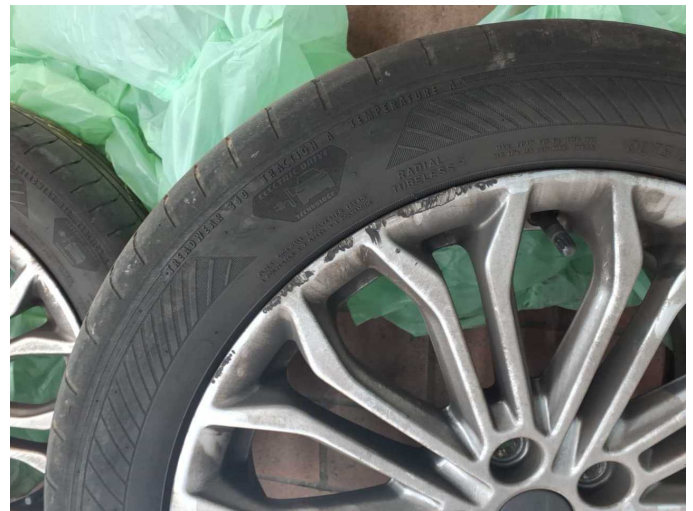
Damage 7: 2nd wheel set: 2 tyres (einseitig abgefahren) - Worn - Replace



Damage 7: 2nd wheel set: 2 tyres (einseitig abgefahren) - Worn - Replace



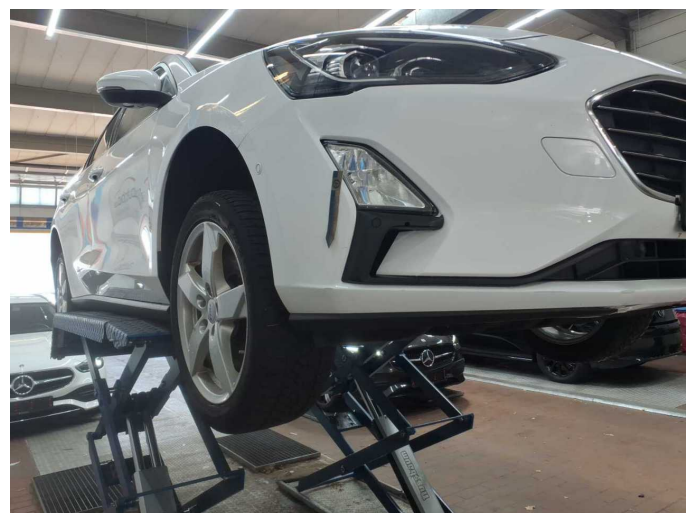
Damage 8: 2nd wheel set: 1 alloy rim - Scratched - Replace



Damage 8: 2nd wheel set: 1 alloy rim - Scratched - Replace



Damage 9: Misc.: Inspection / maintenance - Due - Perform



Damage 10: Front bumper: Front bumper - Scratch(es) - Paint



Damage 10: Front bumper: Front bumper - Scratch(es) - Paint



Damage 10: Front bumper: Front bumper - Scratch(es) - Paint



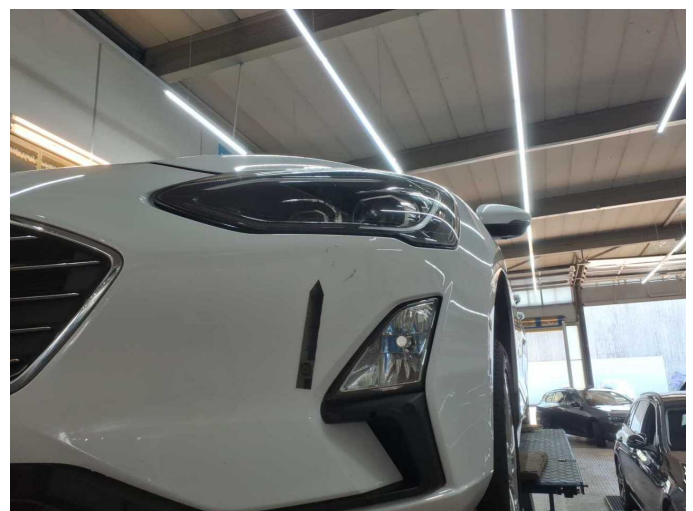
Damage 10: Front bumper: Front bumper - Scratch(es) - Paint



Damage 10: Front bumper: Front bumper - Scratch(es) - Paint



Damage 10: Front bumper: Front bumper - Scratch(es) - Paint



Damage 10: Front bumper: Front bumper - Scratch(es) - Paint



Damage 10: Front bumper: Front bumper - Scratch(es) - Paint



Wear and tear 6: Roof: Roof rail - right side - dent(s) - Smooth repair work



Wear and tear 6: Roof: Roof rail - right side - dent(s) - Smooth repair work



Wear and tear 7: Side panel - rear left side: Sill - Scratch(es) - Cover / polish



Wear and tear 7: Side panel - rear left side: Sill - Scratch(es) - Cover / polish



Wear and tear 7: Side panel - rear left side: Sill - Scratch(es) - Cover / polish



Wear and tear 7: Side panel - rear left side: Sill - Scratch(es) - Cover / polish



Wear and tear 8: Side panel - rear right side: Sill - Scratch(es) - Cover / polish



Wear and tear 8: Side panel - rear right side: Sill - Scratch(es) - Cover / polish



Wear and tear 8: Side panel - rear right side: Sill - Scratch(es) - Cover / polish



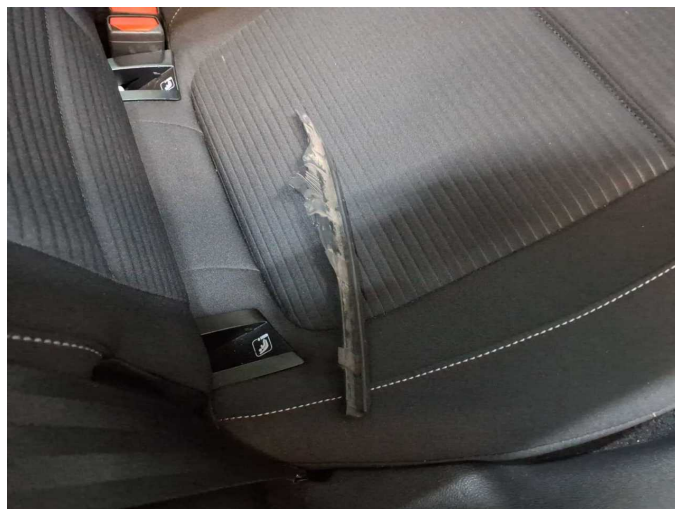
Wear and tear 9: Side panel - rear right side: Elbow - dent(s) - Smooth repair work



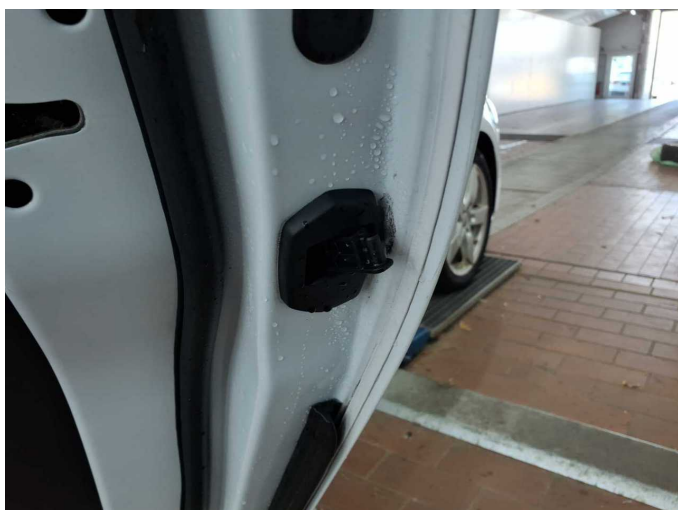
Wear and tear 9: Side panel - rear right side: Elbow - dent(s) - Smooth repair work



Wear and tear 9: Side panel - rear right side: Elbow - dent(s) - Smooth repair work



Wear and tear 10: Door - rear right side: Door (Türkanten schutz) - Broken / torn - No deduction



Wear and tear 10: Door - rear right side: Door (Türkanten schutz) - Broken / torn - No deduction



Previous damage 1: Front



Wartungshistorie

(gemäß Auftraggeber Informationen)

Fahrgestellnummer: WF0PXXGCHPMJ29581
Hersteller / Modell: FORD FORD Focus Turnier 2.0 EcoBlue Start-Stopp-System Aut.
TITANIUM X

Datum	KM-Stand	Beschreibung
18.06.2025	174.373	Bremsflüssigkeit; Bremsflüssigkeit ern; Kraftstofffilter ern; Luftfiltereinsatz ern; Motoröl b. Wartung; Ölfilter ern; Regelwartungsdienst; Systemtest/ Eigendiagnose; Wartung Sonstiges
17.12.2024	146.430	Bremsklötze hinten; Motoröl b. Wartung; Ölfilter ern; Regelwartungsdienst; Wartung Sonstiges
05.04.2024	118.127	AU; Kraftstofffilter ern; Luftfiltereinsatz ern; Motoröl b. Wartung; Ölfilter ern; Regelwartungsdienst; Wartung Sonstiges
20.02.2024	111.490	Batterie ern
13.11.2023	98.748	Bremsklötze hinten; Bremsklötze vorne; Bremsscheiben + Klötze h; Bremsscheiben + Klötze v; Bremsscheiben hinten; Bremsscheiben vorne
27.07.2023	88.654	Bremsflüssigkeit; Bremsflüssigkeit ern; Motoröl b. Wartung; Ölfilter ern; Regelwartungsdienst; Wartung Sonstiges
20.02.2023	71.715	Bremsinspektion vo + hi; Bremsklötze vorne
29.10.2022	58.902	Kraftstofffilter ern; Luftfiltereinsatz ern; Motoröl b. Wartung; Ölfilter ern; Regelwartungsdienst; Wartung Sonstiges
13.01.2022	29.422	Kleine Inspektion; Bremsklötze hinten; Bremsscheiben + Klötze h; Bremsscheiben hinten; Motoröl b. Wartung; Ölfilter ern; Wartung Sonstiges