

Expertise

Protocol number: 46073115
Order No. / Reference: 26443893
Inspection date: 22 Jun 2026

Manufacturer: Peugeot

Model: 308 SW BlueHDi 130 EAT8 Allure Pack

VIN: VR3FCYHZTPY539846



Vehicle details

Manufacturer / Type / Model / Equipment

Peugeot 308 SW BlueHDi 130 EAT8 Allure Pack

Vehicle Identification number VR3FCYHZTPY539846

Mileage (Read) 202,663 km

First registration 28 Aug 2023

Number of holders 1

Power / Engine displacement 96 kw / 1,499 ccm

Fuel type / Cylinder Diesel / 4

Gearbox / Number of gears Automatic / 8

Type of drive Front drive

Type of vehicle Station wagon

Colour / colour code Schneeweiß

Doors / Seats 5 / 5

Upholstery type Cloth / leather combination

Colour of upholstery Black



Vehicle details

Maintenance booklet / proof	digital proof / complete	Next maintenance in	8 Monat(e)
Last service on / at	04/2026 at 196,489 km		
Key is / should be	3 / 2	FZG documents	ZB#2 (B) was available (copy), ZB#1 (S) was not available.
		Letter No.	GG062629
Previous damage / Accident	None detectable	Repainting	None detectable
Inspection conditions	sufficient	Lifting equipment / pit	No
Test drive	Not performed	Engine function test	Performed
Manufacturer key number/ type code number	1889 / AEI 00048		
Emission standard	EURO6;WLTP;AP;PI/CI; M, N1 I	fine dust sticker	
Permitted total weight	1,950 kg	Empty weight	

Tyres

Mounted tyres

#	Tyre size	Type of tyre	Manufacturer	Tread depth
1)	225/45 R17 94Y	Summer tyres on Light alloy	Pirelli	6mm / 6mm
2)	225/45 R17 94Y	Summer tyres on Light alloy	Pirelli	6mm / 6mm

Additional tyres

#	Tyre size	Type of tyre	Manufacturer	Tread depth
1)	205/55 R16 91H	Winter tyres on Light alloy	Goodyear	3mm / 3mm
2)	205/55 R16 91H	Winter tyres on Light alloy	Goodyear	3mm / 3mm

Replacement

Typ	Tyre size	Type of tyre	Manufacturer	Tread depth
	Tirefit	Expiration date 06/2028		

Legend: Tread depth information for the left tire is listed first, for the right tire it is listed second on the axle in the direction of travel.



Equipment

Standard equipment

- Storage compartment: Illuminated glove compartment
- Active Safety Brake Plus
- Airbags (6)
- Adaptive Cruise Control (ACC) with Stop & Go function (EAT8)
- Hill start assist
- On-board computer
- Decorative fabric inserts "Texa" for door panels and dashboard
- Tachometer
- Rear parking aid, acoustic and visual
- Electronic Stability Program (ESP)
- Electric windows, front and rear
- electric parking brake
- Front collision warning
- luggage compartment roller blind
- Cup holder in the center console
- rear window wiper
- Infotainment system: PEUGEOT i-Connect Advanced
- Map pockets on the front seatbacks
- Child safety lock at the rear
- LED lighting in the front footwell
- LED ceiling lighting at the front
- LED daytime running lights
- Steering wheel: Leather steering wheel with paddle shifters
- Mirror Screen
- front center armrest
- Multi-collision brake
- Emergency brake assist with automatic activation of the hazard warning lights
- Peugeot i-Toggles
- Rain sensor
- Wheels: Halong 17" alloy wheels, two-tone
- Reversing camera with 180° surround view
- Electric power steering
- Seats: Passenger seat height adjustable
- Seats: Manual lumbar support for driver
- Seats: Rear seats
- Seats: Front seats
- 12-volt socket
- Blind spot assist
- Chrome-plated decorative exhaust tailpipes
- Immobiliser
- Decorative trim in high-gloss black on the side windows
- Adjustable intermediate loading shelf

Extra equipment

- Detachable towbar (with removable ball head without tools)
- Seats: Heated front seats

- ABS (Anti-lock Braking System) with electronic brake force distribution
- Traffic Alert - Rear Cross Traffic Alert
- Electrically adjustable, heated and folding exterior mirrors
- Exterior mirror caps in Perla Nera Black
- Turn signals with lane change indicator function
- third brake light
- Digital instrument cluster with high-resolution 10" screen, adjustable and customizable
- Eco-LED headlights
- Front parking aid, acoustic and visual
- Driving mode selector (Sport - Normal - Eco)
- High beam assist
- Follow-me-home function (automatic)
- Laminated glass windshield, noise-reducing
- Transmission: 8-speed automatic transmission EAT8
- Heated rear window
- Rear apron in black
- Interior mirror automatically dimming
- Keyless System Plus
- Automatic climate control (2-zone), with activated carbon filter
- LED taillights
- Steering wheel: Small multifunction leather steering wheel, flattened at the top and bottom.
- light sensor
- Armrest - centre, rear
- Multifunctional touchscreen with 10" HD color display
- Fatigue warning
- Particulate filter: FAP diesel particulate filter
- Break warning
- Upholstery: Fabric/faux leather
- Tire pressure monitoring system
- Wheels: Tire repair kit (compressor + tire sealant spray)
- Side windows in the second row and rear window are more heavily tinted.
- Seats: Driver's seat height adjustable
- Seats: Rear bench seat and backrest split 40/20/40, foldable
- Lane keeping assist with steering intervention
- Stop&Start automatic
- Doors lock automatically when driving off
- Traffic sign recognition
- Central locking system, activatable from inside via remote control

- luggage compartment partition net
- Paint finish: Solid



Brief expert findings

Documents submitted	At the time of the inspection, the vehicle registration certificate Part 2 (title) was available, but the vehicle registration certificate Part 1 (document) was not. (Copy)
VIN comparison	The vehicle identification number (VIN) was read from the vehicle and its conformity with the submitted documents was confirmed by the undersigned during the inspection.
Inspection	The inspection conditions were sufficient for the assessment of the vehicle. No lifting equipment or pit was available for inspecting the vehicle. Therefore, inspection of the vehicle's underside was only possible to a limited extent.
Test drive	No test drive/shunting maneuver was carried out during the inspection of the vehicle.
Engine function test	An engine test run was performed.

Value reducing factors

No.	Component group	Description
1	Door - front right side	Door - dent(s) - Smooth repair work
2	Wheel / tyres	Alloy rim - front right side - Scratched - Loss in value
3	Wheel / tyres	Alloy rim - rear left side - Scratch(es) - Loss in value
4	Side panel - rear left side	Side panel - Scratch(es) - Paint
5	Door - rear right side	Door - Scratch(es) - Paint

Wear and tear

No.	Component group	Description
1	2nd wheel set	1 tyre (Nicht Bestandteil der Ausstattung) - Broken / torn - No deduction
2	Door - rear left side	Door - Stone chips - No deduction
3	Front bumper	Front bumper - Stone chips - No deduction
4	Bonnet	Bonnet - Stone chips - No deduction
5	Vehicle glazing	Windscreen - Stone chips - No deduction

The vehicle shows signs of wear and tear commensurate with its age and use.

Order/Scope of Order

An order was placed to prepare a sales report for the described vehicle. This report includes the following:

- Description of key vehicle information
- Documentation of equipment features
(*Delivery by third-party service providers*)
- Documentation of damage, defects, missing parts
- Documentation of prior damage, unrepaired prior damage, repainting
- A brief visual or functional inspection of the equipment details, if possible.
(*Functional testing of driver assistance systems is not included in the scope of services!*)
- a photographic documentation of the vehicle



Basis for the order

This product is based on the guidelines for vehicle returns and valuations published by Alphabet Fleet GmbH. The expert makes the specific findings in each individual case objectively, within the framework of the prescribed standards, based on their own expertise.

The vehicle inspection takes place in a fully assembled, unassembled state.

Damage or defects that can only be detected during disassembly/diagnostic work or through further investigation remain within the realm of prognostic risk. An increased risk exists due to concealed defects caused by fraudulent misrepresentation and which were not identifiable by the expert.

Damage or defects resulting from normal use or wear and tear of the vehicle will be accepted in accordance with the applicable standard.

There was no explicit identification or monetary consideration of the expected features within the product.

Features which, in their nature and extent, slightly exceed normal use but do not constitute unacceptable damage, will be documented and indicated as signs of wear, if applicable.

Damage or defects that, according to the applicable standard, can no longer be attributed to normal use or wear and tear are listed under "Value Reducing Factors" in the product description.

Depending on the product specification, a monetary ID can be provided. If this takes place, the costs can be 100% d or pro rata depending on the vehicle's age and mileage.

Previous damages

No apparent prior damage that had been repaired could be found on the vehicle.

Comments

- Die Unterbodenbesichtigung war nur ebenerdig und eingeschränkt möglich.
- Mehrkosten möglich .

- Winterradsatz ist kein Bestandteil des Auslieferungsumfangs.



Figure 1: Diagonal front (left)



Figure 2: Diagonal front (right)



Figure 3: Diagonal rear (left)



Figure 4: Diagonal rear (right)



Figure 5: Interior - front



Figure 6: Interior - rear



Figure 7: Instrument cluster



Figure 8: Instrument cluster



Figure 9: Instrument panel



Figure 10: Interior 360° view



Figure 11: Cargo area



Figure 12: VIN



Figure 13: VIN



Figure 14: Mounted tyres

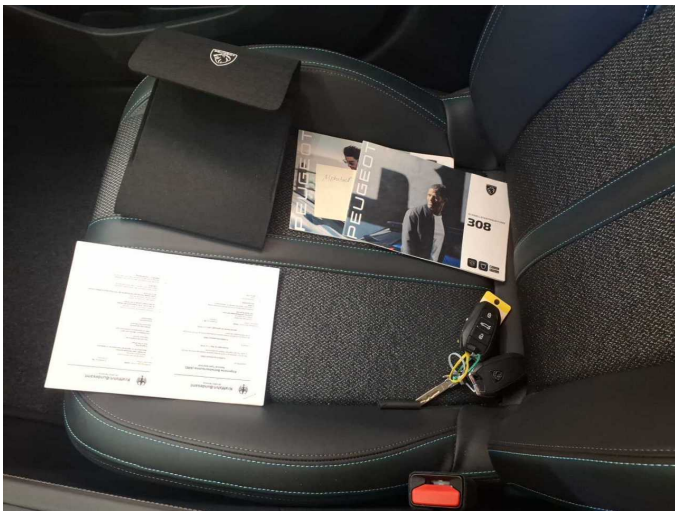


Figure 15: Documents



Figure 16: Documents

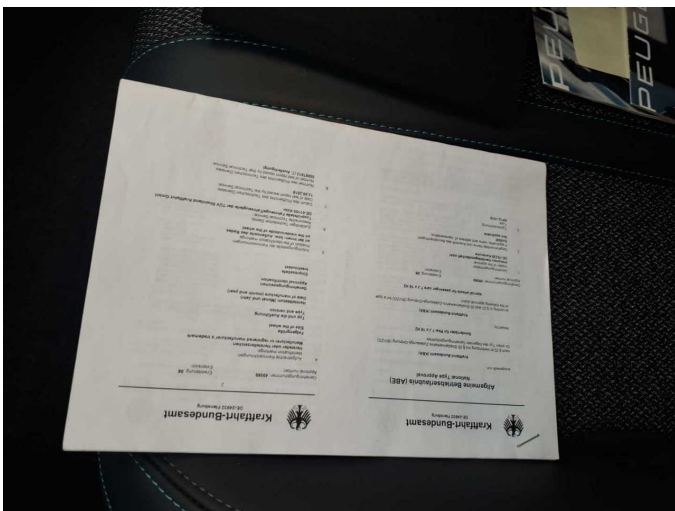


Figure 17: Documents

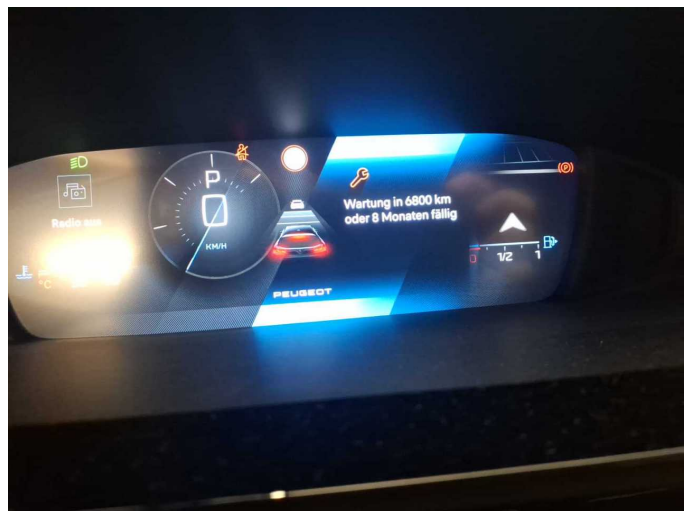


Figure 18: Documents



Figure 19: Additional tyres



Figure 20: Navigation



Figure 21: Misc.



Figure 22: Misc.



Figure 23: Misc.



Figure 24: Misc.

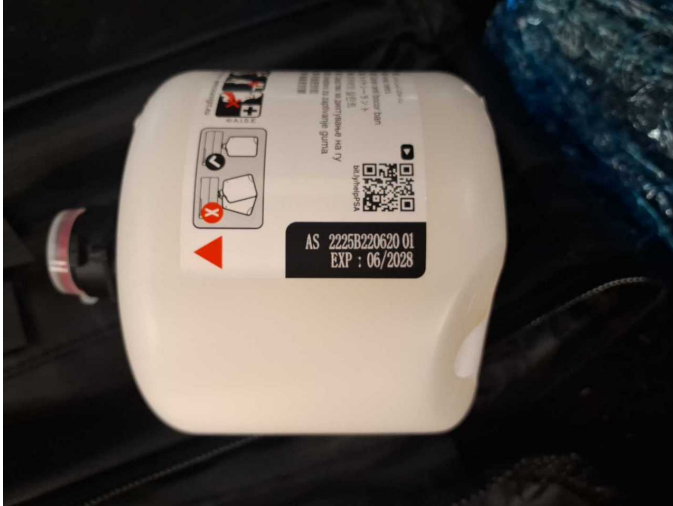


Figure 25: Misc.



Figure 26: Misc.

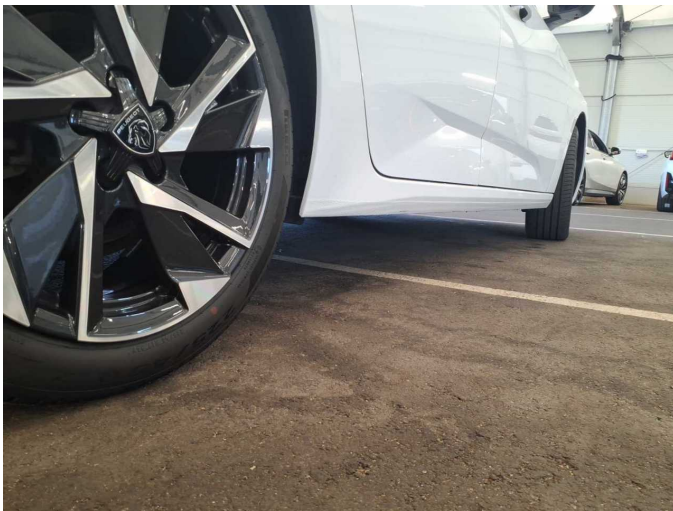


Figure 27: Misc.

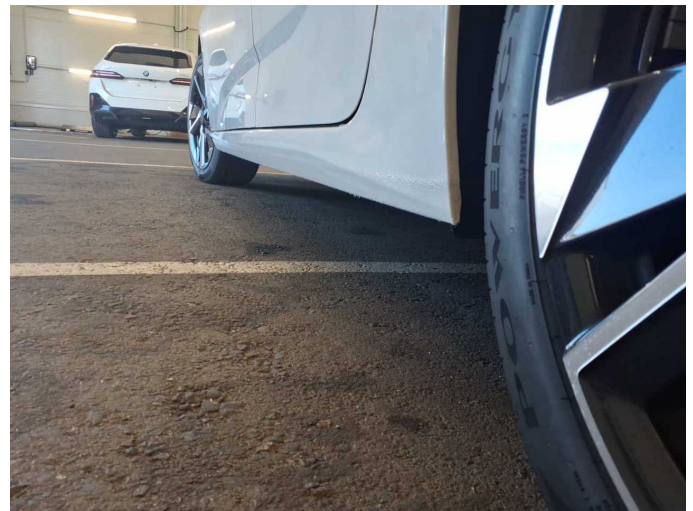


Figure 28: Misc.



Figure 29: Misc.



Figure 30: Misc.



Figure 31: Misc.



Figure 32: Misc.

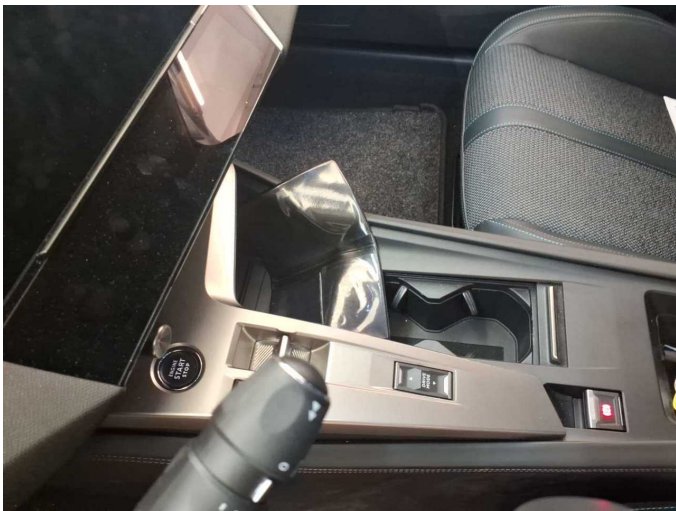


Figure 33: Misc.



Figure 34: Misc.

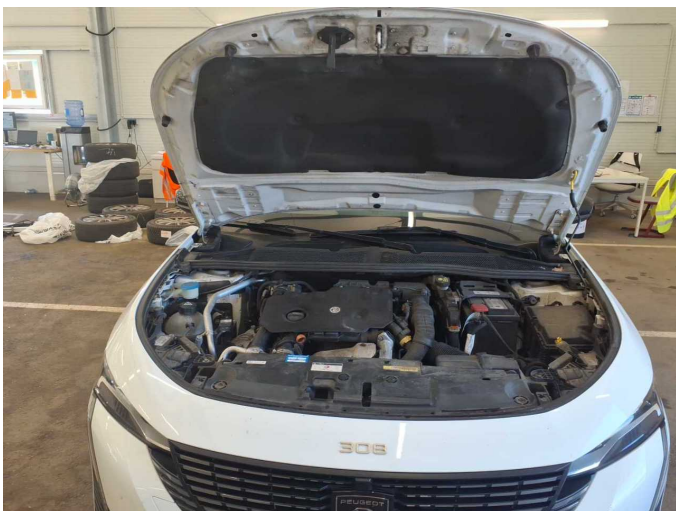


Figure 35: Misc.



Figure 36: Misc.



Damage 1: Door - front right side: Door - dent(s) - Smooth repair work



Damage 1: Door - front right side: Door - dent(s) - Smooth repair work



Damage 2: Wheel / tyres: Alloy rim - front right side - Scratched - Loss in value



Damage 2: Wheel / tyres: Alloy rim - front right side - Scratched - Loss in value



Damage 3: Wheel / tyres: Alloy rim - rear left side - Scratch(es) - Loss in value



Damage 3: Wheel / tyres: Alloy rim - rear left side - Scratch(es) - Loss in value



Damage 4: Side panel - rear left side: Side panel - Scratch(es) - Paint



Damage 4: Side panel - rear left side: Side panel - Scratch(es) - Paint



Damage 4: Side panel - rear left side: Side panel - Scratch(es) - Paint



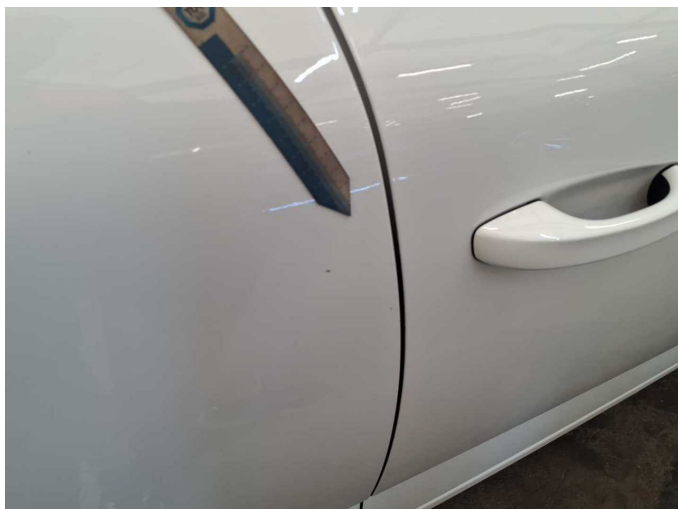
Damage 4: Side panel - rear left side: Side panel - Scratch(es) - Paint



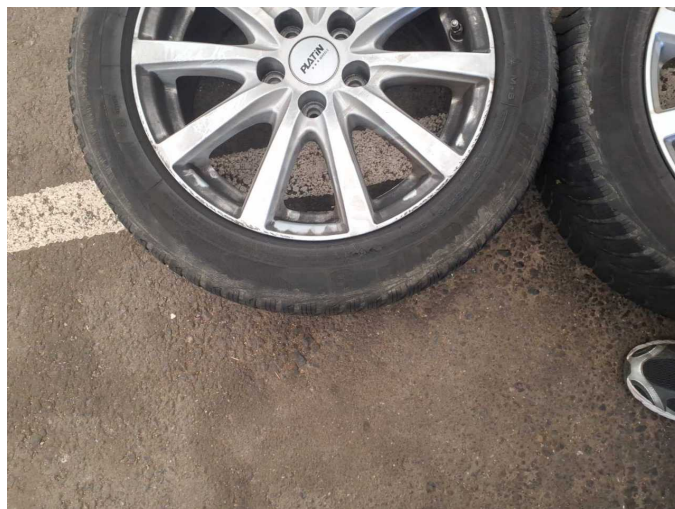
Damage 5: Door - rear right side: Door - Scratch(es) - Paint



Damage 5: Door - rear right side: Door - Scratch(es) - Paint



Damage 5: Door - rear right side: Door - Scratch(es) - Paint



Wear and tear 1: 2nd wheel set: 1 tyre (Nicht Bestandteil der Ausstattung) - Broken / torn - No deduction



Wartungshistorie

(gemäß Auftraggeber Informationen)

Fahrgestellnummer: VR3FCYHZTPY539846
Hersteller / Modell: PEUGEOT PEUGEOT 308 SW BlueHDi 130 EAT8 Allure Pack

Datum	KM-Stand	Beschreibung
09.04.2026	196.489	Keilrippenriemen; Motoröl b. Wartung; Ölfilter ern; Regelwartungsdienst; Systemtest/Eigendiagnose; Wartung Sonstiges; Zahnriemen/Steuerkett ern
28.11.2025	160.606	Kraftstofffilter ern; Luftfiltereinsatz ern; Motoröl b. Wartung; Ölfilter ern; Regelwartungsdienst; Wartung Sonstiges
20.10.2025	150.829	Bremsklötze hinten; Bremsklötze vorne; Bremsscheiben+Beläge v+h; Bremsscheiben hinten; Bremsscheiben vorne
30.07.2025	131.815	Bremsflüssigkeit; Bremsflüssigkeit ern; Motoröl b. Wartung; Ölfilter ern; Regelwartungsdienst; Wartung Sonstiges
21.03.2025	102.863	Motoröl b. Wartung; Ölfilter ern; Regelwartungsdienst; Wartung Sonstiges
06.12.2024	73.191	Kraftstofffilter ern; Luftfiltereinsatz ern; Motoröl b. Wartung; Ölfilter ern; Regelwartungsdienst; Wartung Sonstiges
29.07.2024	36.801	Motoröl b. Wartung; Ölfilter ern; Regelwartungsdienst; Wartung Sonstiges