

Expertise

Protocol number: 45974345
Order No. / Reference: 26407717
Inspection date: 12 Jun 2026

Manufacturer: Skoda

Model: Karoq 2.0 TDI SCR DSG Style

VIN: TMBJF7NU6P5070333



Vehicle details

Manufacturer / Type / Model / Equipment

Skoda Karoq 2.0 TDI SCR DSG Style

Vehicle Identification number TMBJF7NU6P5070333

Mileage (Read) 74,617 km

First registration 25 Aug 2023

Number of holders 1

Next periodical technical inspection 08/2026

(Report not on hand)

Power / Engine displacement 85 kw / 1,968 ccm

Fuel type / Cylinder Diesel / 4

Gearbox / Number of gears Automatic / 7

Type of drive Front drive

Type of vehicle SUV

Colour / colour code Energy-blau uni

Doors / Seats 5 / 5

Upholstery type Cloth

Colour of upholstery Black

Re-import no

readiness to drive Roadworthy



Vehicle details

Maintenance booklet / proof	digital proof / complete	Next maintenance in	5,800 km
Last service on / at	08/2025 at 57,947 km		
Key is / should be	3 / 3	FZG documents	ZB#2 (B) was available (copy), ZB#1 (S) was not available.
		Letter No.	GT125488
Previous damage / Accident	None detectable	Repainting	None detectable
Inspection conditions	sufficient	Lifting equipment / pit	No
Test drive	Not performed	Engine function test	Performed
readiness to drive	Roadworthy		
Manufacturer key number/ type code number	8004 / AVU 01916		
Emission standard	EURO6;WLTP;AP;PI/CI; M, N1 I	fine dust sticker	
Permitted total weight	2,008 kg	Empty weight	

Tyres

Mounted tyres

#	Tyre size	Type of tyre	Manufacturer	Tread depth
1)	215/60 R16 95H	Winter tyres on Steel	Dunlop	6mm / 6mm
2)	215/60 R16 95H	Winter tyres on Steel	Dunlop	6mm / 6mm

Additional tyres

#	Tyre size	Type of tyre	Manufacturer	Tread depth
1)	215/50 R18 96W	Summer tyres on Light alloy	Goodyear	6mm / 6mm
2)	215/50 R18 96W	Summer tyres on Light alloy	Goodyear	6mm / 6mm

Replacement

Typ	Tyre size	Type of tyre	Manufacturer	Tread depth
E	215/60 R16 95V	Summer tyres on Steel	Sonstige	6 mm

Legend: Tread depth information for the left tire is listed first, for the right tire it is listed second on the axle in the direction of travel.



Equipment

Standard equipment

- Storage compartments
- Airbag, driver and passenger
- Airbag, head airbags
- Allergen filter
- Traction control (ASR)
- Electrically folding exterior mirrors including interior and exterior mirrors with automatic dimming.
- Exterior mirrors and door handles painted in body color
- Hill start assist
- Care Connect: Proactive services (10-year term)
- Roof rails, black
- Diesel particulate filter
- Easy Start (start-stop button)
- Electronic parking brake including auto-hold function
- ESC Electronic Stability Control
- Electric windows front and rear
- Closed storage compartment on the dashboard
- Cruise control
- Tinted windows
- Heated rear window
- Rear window wiper/washer system
- ISOFIX preparation on the outer rear seats
- Front and rear headrests are height-adjustable.
- LED brake light in the rear spoiler
- LED taillights in crystal glass look
- LED headlights with daytime running lights
- Reading lights at the front of the headliner
- Front center armrest, including storage compartment
- Engine drag torque control (MSR)
- Fatigue detection
- Package: Comfort PLUS
- Package: Winter BASIC
- Upholstery: Cloth
- Radio accessories: 8 speakers
- Radio accessories: USB port in the center console (Type-C)
- Wheels: 18" Procyon alloy wheels, Aero, matte black
- Gear shift indicator
- Seat belts
- Seats: Height-adjustable front seats
- Sun visor on driver and passenger side with illuminated vanity mirror
- 12V socket - in the center console
- Lashing eyes in the trunk
- Central locking with remote control
- front aero windshield wipers
- Airbag, driver's knee airbag
- Airbag, front side airbags
- Anti-lock braking system (ABS)
- Dashboard in black / black, door trim in black
- Electrically adjustable and heated exterior mirrors with integrated side indicators
- Illuminated trunk
- Hydraulic brake assist (HBA)
- Grey headliner
- Decorative inlay style
- Digital Cockpit Plus (10")
- eCall
- Electronic transverse differential lock (XDS+)
- Driving light assistant and rain sensor
- Front radar assistant including city emergency braking function with pedestrian detection
- Transmission: 7-speed dual-clutch transmission (DSG)
- Green tec (start/stop system and brake energy recuperation)
- Automatic interior mirror dimming
- Trunk cover, fixed
- Paint finish: Solid
- LED headlights with daytime running lights
- LED fog lights
- Steering wheel: Heated steering wheel
- Rear center armrest with cup holders and pass-through option
- Multi-collision brake
- Package: Bolero infotainment package
- Package: Parking BASIC (front and rear parking sensors - reversing camera)
- Wheel arch cover
- Radio accessories: Digital radio reception DAB+
- Radio accessories: Wireless SmartLink
- Tire pressure monitoring
- Rear seat backrest split 60:40, foldable
- Electromechanical power steering
- Seats: Adjustable lumbar support in the front seats
- Skoda Care Connect
- Speed limiter
- 12V socket - in the trunk
- Bumpers partially painted in body color
- Immobiliser



Extra equipment

- Swiveling trailer hitch with electric release (including trailer stabilization)
- Paint finish: Special paint finish, solid color
- Package: Amundsen Infotainment Package (Amundsen Dynamic Radio Navigation System - 8" Capacitive Color Display - Digital Cockpit Plus - Wireless SmartLink - Voice Control - Phonebox with inductive charging function (connection via external antenna) - Infotainment Online (3-year term) - Mapcare navigation data update)
- Package: Winter PLUS (Heated front and outer rear seats - Heated windshield washer nozzles - Headlight cleaning system - Heated windshield)
- Power outlet: 230-volt socket and USB charging port (Type-C) (on the back of the front center armrest)
- Third vehicle key
- Electric tailgate operation with comfort opening
- Steering wheel: Heated sports leather steering wheel (DSG) with multifunction buttons (including paddle shifters)
- Package: Traveller BASIC (Predictive Adaptive Cruise Control ACC (control range up to 210 km/h) - Adaptive Lane Keeping Assist - Traffic Sign Recognition - Capacitive Steering Wheel with Hands Off Detection - USB-C Charging Port on the Interior Mirror - Emergency and Traffic Jam Assist)
- Wheels: 16" steel spare wheel (tire 215/60 R16 - incl. jack, wheel wrench, cargo cover - replaces tire mobility kit)

Brief expert findings

Documents submitted	At the time of the inspection, the vehicle registration certificate Part 2 (title) was available, but the vehicle registration certificate Part 1 (document) was not. (Copy)
VIN comparison	The vehicle identification number (VIN) was read from the vehicle and its conformity with the submitted documents was confirmed by the undersigned during the inspection.
Inspection	The inspection conditions were sufficient for the assessment of the vehicle. No lifting equipment or pit was available for inspecting the vehicle. Therefore, inspection of the vehicle's underside was only possible to a limited extent.
Test drive	No test drive/shunting maneuver was carried out during the inspection of the vehicle.
Engine function test	An engine test run was performed.
readiness to drive	The vehicle was roadworthy at the time of inspection.

Value reducing factors

No.	Component group	Description
1	Boot lid / rear door	Boot lid - Scratched - Paint
2	Rear bumper	Rear bumper - Paint defect - Repair and paint

Wear and tear

No.	Component group	Description
1	Front bumper	Front bumper - Stone chips - No deduction
2	Bonnet	Bonnet - Stone chips - No deduction
3	Vehicle glazing	Windscreen - Stone chips - No deduction
4	Interior	Interior - Soiled - No deduction

The vehicle shows signs of wear and tear commensurate with its age and use.



Order/Scope of Order

An order was placed to prepare a sales report for the described vehicle. This report includes the following:

- Description of key vehicle information
- Documentation of equipment features
(Delivery by third-party service providers)
- Documentation of damage, defects, missing parts
- Documentation of prior damage, unrepaired prior damage, repainting
- A brief visual or functional inspection of the equipment details, if possible.
(Functional testing of driver assistance systems is not included in the scope of services!)
- a photographic documentation of the vehicle

Basis for the order

This product is based on the guidelines for vehicle returns and valuations published by Alphabet Fleet GmbH. The expert makes the specific findings in each individual case objectively, within the framework of the prescribed standards, based on their own expertise.

The vehicle inspection takes place in a fully assembled, unassembled state.

Damage or defects that can only be detected during disassembly/diagnostic work or through further investigation remain within the realm of prognostic risk. An increased risk exists due to concealed defects caused by fraudulent misrepresentation and which were not identifiable by the expert.

Damage or defects resulting from normal use or wear and tear of the vehicle will be accepted in accordance with the applicable standard.

There was no explicit identification or monetary consideration of the expected features within the product.

Features which, in their nature and extent, slightly exceed normal use but do not constitute unacceptable damage, will be documented and indicated as signs of wear, if applicable.

Damage or defects that, according to the applicable standard, can no longer be attributed to normal use or wear and tear are listed under "Value Reducing Factors" in the product description.

Depending on the product specification, a monetary ID can be provided. If this takes place, the costs can be 100% or pro rata depending on the vehicle's age and mileage.

Previous damages

No apparent prior damage that had been repaired could be found on the vehicle.

Comments

- Die Unterbodenbesichtigung war nur ebenerdig & eingeschränkt möglich. Mehrkosten möglich.
- Für den montierten Radsatz wurde kein Nachweis erbracht.
- Winterradsatz ist kein Bestandteil des Auslieferungsumfangs.



Figure 1: Diagonal front (left)



Figure 2: Diagonal front (right)



Figure 3: Diagonal rear (left)



Figure 4: Diagonal rear (right)



Figure 5: Interior - front



Figure 6: Interior - rear



Figure 7: Instrument cluster



Figure 8: Instrument panel



Figure 9: Interior 360° view



Figure 10: Cargo area

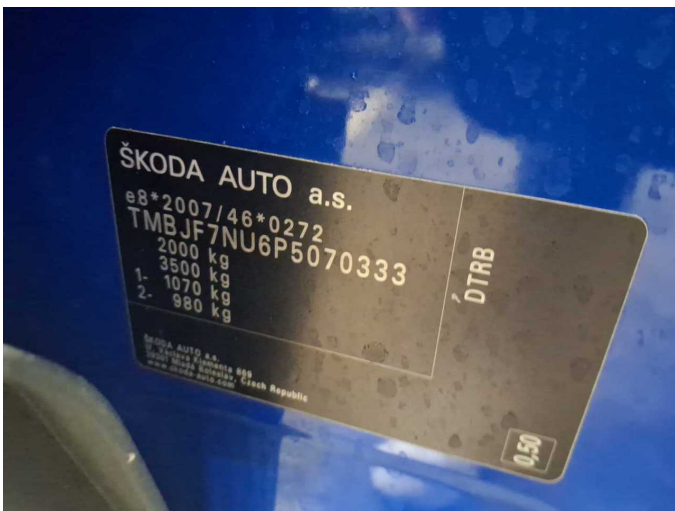


Figure 11: VIN



Figure 12: Mounted tyres



Figure 13: Documents



Figure 14: Documents



Figure 15: Additional tyres

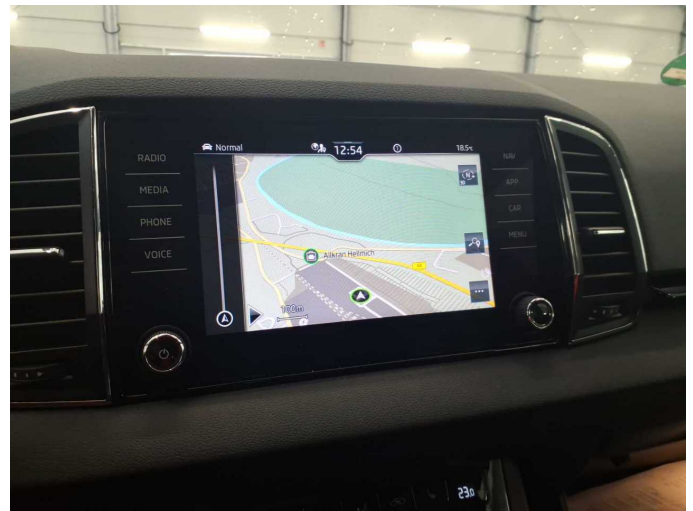


Figure 16: Navigation

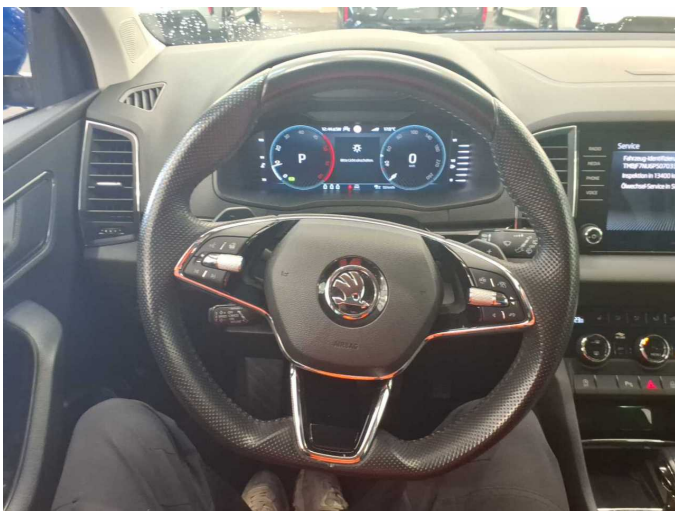


Figure 17: Misc.

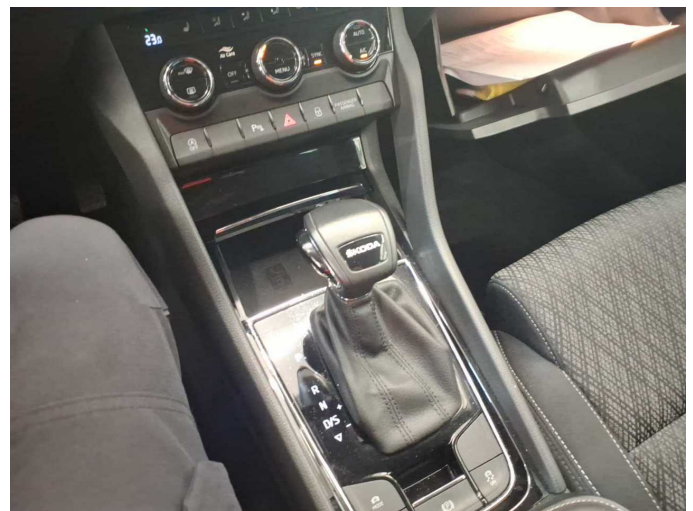


Figure 18: Misc.



Figure 19: Misc.



Figure 20: Misc.

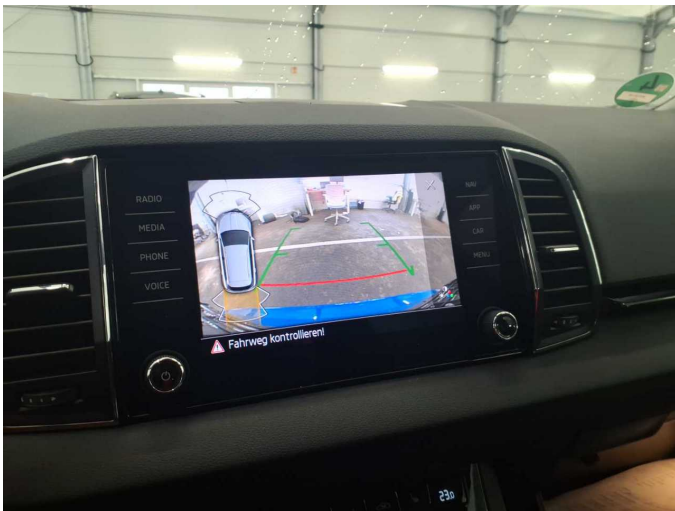


Figure 21: Misc.



Figure 22: Misc.

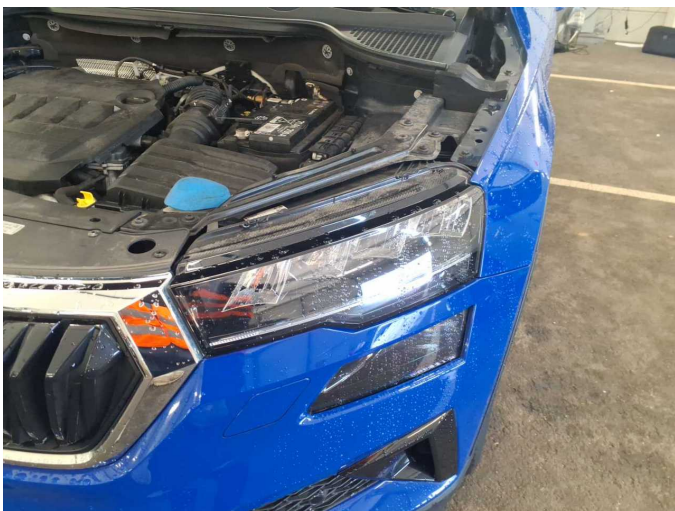


Figure 23: Misc.

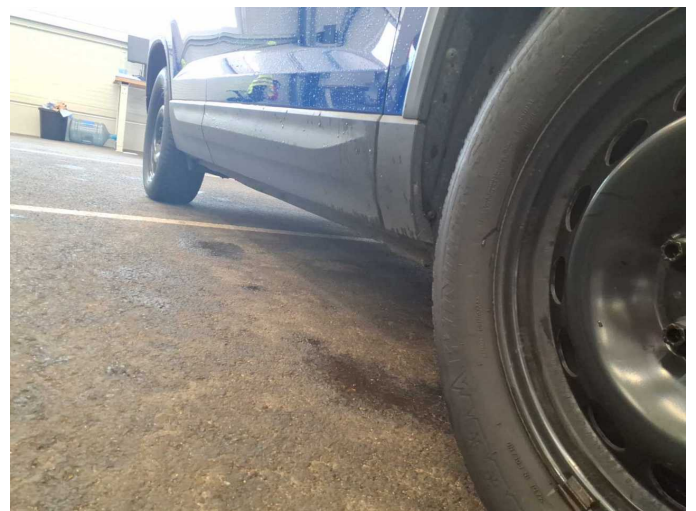


Figure 24: Misc.



Figure 25: Misc.



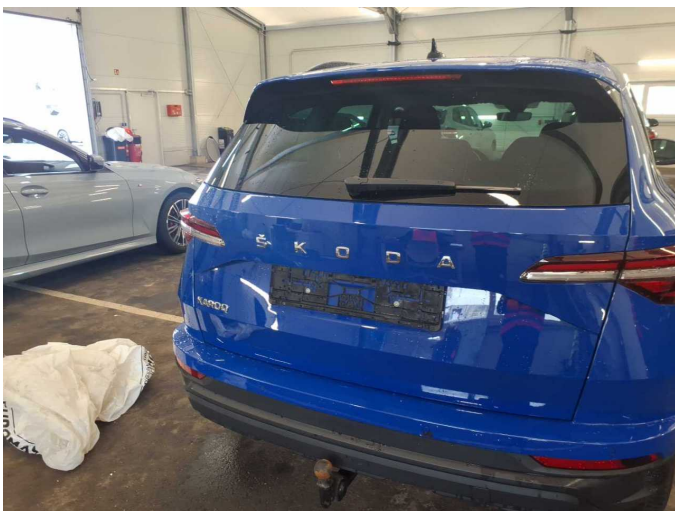
Figure 26: Misc.



Figure 27: Misc.



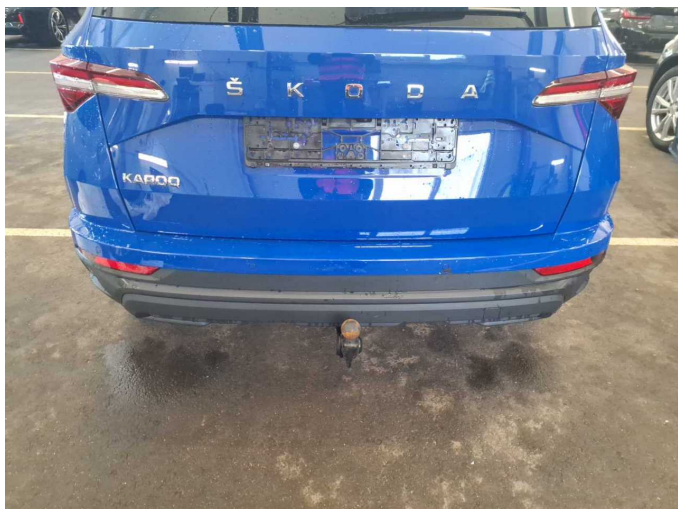
Figure 28: Misc.



Damage 1: Boot lid / rear door: Boot lid - Scratched - Paint



Damage 1: Boot lid / rear door: Boot lid - Scratched - Paint



Damage 2: Rear bumper: Rear bumper - Paint defect - Repair and paint

Damage 2: Rear bumper: Rear bumper - Paint defect - Repair and paint



Wartungshistorie

(gemäß Auftraggeber Informationen)

Fahrgestellnummer: TMBJF7NU6P5070333

Hersteller / Modell: SKODA SKODA Karoq 2.0 TDI SCR DSG Style

Datum	KM-Stand	Beschreibung
14.08.2025	57.947	Bremse Sonstiges; Bremsflüssigkeit; Bremsflüssigkeit ern; Bremsklötze hinten; Motoröl b. Wartung; Ölfilter ern; Regelwartungsdienst; Systemtest/ Eigendiagnose; Wartung Sonstiges
18.09.2024	29.700	Motoröl b. Wartung; Ölfilter ern; Regelwartungsdienst; Wartung Sonstiges