

Expertise

Protocol number: 45790528
Order No. / Reference: 26445867
Inspection date: 29 May 2026

Manufacturer: Audi

Model: Q5 40 TDI quattro S tronic S line

VIN: WAUZZZFY3N2005233



Vehicle details

Manufacturer / Type / Model / Equipment

Audi Q5 40 TDI quattro S tronic S line

Vehicle Identification number WAUZZZFY3N2005233

Mileage (Read) 200,028 km

First registration 14 Oct 2021

Number of holders 1

Next periodical technical inspection 11/2026
(Report not on hand)

Power / Engine displacement 150 kw / 1,968 ccm

Fuel type / Cylinder Hybrid Diesel / E / 4

Gearbox / Number of gears Automatic / 7

Type of drive All-wheel drive

Type of vehicle SUV

Colour / colour code Distriktgrün Metallic

Doors / Seats 5 / 5

Upholstery type Cloth

Colour of upholstery Black-Anthracite



Vehicle details

| | | | |
|--|------------------------------|--------------------------------|--|
| Maintenance booklet / proof | digital proof / complete | Next maintenance in | 10,000 km |
| Last service on / at | 01/2026 at 188,596 km | | |
| Key is / should be | 2 / 2 | FZG documents | ZB#2 (B) was available (copy), ZB#1 (S) was not available. |
| | | Letter No. | GF289774 |
| Previous damage / Accident | Detectable | Repainting | Detectable |
| Inspection conditions | sufficient | Lifting equipment / pit | yes |
| Test drive | Not performed | Engine function test | Performed |
| Manufacturer key number/ type code number | 0588 / BQX 00269 | | |
| Emission standard | EURO6;WLTP;AP;PI/CI; M, N1 I | fine dust sticker | |
| Permitted total weight | 2,510 kg | Empty weight | |

Tyres

Mounted tyres

| # | Tyre size | Type of tyre | Manufacturer | Tread depth |
|----|-----------------|-----------------------------|--------------|-------------|
| 1) | 255/45 R20 105W | Summer tyres on Light alloy | Continental | 4mm / 4mm |
| 2) | 255/45 R20 105W | Summer tyres on Light alloy | Continental | 5mm / 5mm |

Additional tyres

| # | Tyre size | Type of tyre | Manufacturer | Tread depth |
|----|-----------------|-----------------------------|--------------|-------------|
| 1) | 235/55 R19 105H | Winter tyres on Light alloy | Pirelli | 5mm / 5mm |
| 2) | 235/55 R19 105H | Winter tyres on Light alloy | Pirelli | 6mm / 6mm |

Replacement

| Typ | Tyre size | Type of tyre | Manufacturer | Tread depth |
|-----|-----------------|-----------------------|--------------|-------------|
| N | 195/75 R18 100V | Summer tyres on Steel | Vredestein | 2 mm |

Legend: Tread depth information for the left tire is listed first, for the right tire it is listed second on the axle in the direction of travel.



Equipment

Standard equipment

- AdBlue tank (12 liters)
- Airbag: Front side airbags and head airbag system
- "quattro" all-wheel drive with ultra technology
- Traction control (ASR)
- Audi drive select
- Audi pre sense city
- Fabric headliner
- Black roof rails with roof rack recognition
- Diesel particulate filter (DPF)
- Door sill trims with aluminum inlay at the front, illuminated, with S lettering
- Electronic Stability Control (ESC)
- Electric windows front and rear
- front and rear floor mats
- Cruise control system including speed limiter
- Heated rear window
- Interior lighting
- Manual child lock
- Automatic air conditioning
- boot floor mat
- Front headrests
- LED taillights
- Light/rain sensor
- front center armrest
- Non-smoking version
- Wheel: Tire pressure monitoring system
- Radio: MMI Radio plus
- Electromechanical power steering
- Fabric seat covers (synonym)
- Seats: Front seats manually adjustable
- Start-stop system
- Separation net
- Glazing: Windscreen in heat-insulating and acoustic glazing
- black decorative trim
- Airbag for driver and front passenger
- Accent areas matte black
- Anti-lock braking system (ABS)
- Audi connect emergency call & service with Audi connect Remote & Control
- Hill descent control
- Roof edge spoiler
- Decorative inlays Micrometallic silver
- Tachometer
- Electromechanical parking brake
- Electronic Differential Lock (EDS)
- Driver Information System
- Remote key (without Safe-Lock)
- Luggage compartment lid, electrically opening and closing
- Transmission: S tronic 7-speed
- rear window wiper
- Interior mirror dimming
- ISOFIX child seat attachment and Top Tether for the outer rear seats
- Rear headrests (3)
- Stainless steel loading sill protector
- LED headlights
- Mild hybrid
- Model designation according to new performance labeling
- Wheel: On-board tools (excluding jack)
- Wheel: Tire repair kit
- Radio accessories: Data module Europe
- Seat belts
- Seats: Split-folding rear seat backrest
- Sun visor on driver and passenger side
- Phone: Bluetooth interface
- First aid kit with warning triangle
- Electronic immobilizer
- thermal insulation glazing



Extra equipment

- Chassis: adaptive air suspension (electronically controlled air suspension with continuously adaptive damping system at all 4 wheels, automatically regulates vehicle level and damping, including level control and manual lift function - setting of various modes via Audi drive select - with 5-link lightweight front axle; controlled shock absorbers and air springs; stabilizer; front axle carrier rigidly bolted to the body - with 5-link lightweight rear axle with independent wheel suspension; controlled shock absorbers and air springs, rear axle carrier)
- Comfort center armrest at the front (adjustable in tilt and longitudinally sliding or completely foldable)
- Front seat heating (for driver and front passenger side, individually adjustable in 3 stages via direct selection button on the climate control unit)
- Function package tire package (on-board tools and jack in the luggage compartment - spare folding wheel, maximum permissible speed 80 km/h; with compressor)
- Lane change warning including Audi pre sense rear (lane change assistant, supports the driver within system limits when changing lanes (functional range from approx. 15 to a maximum of 250 km/h) by displaying the information in the respective exterior mirror. Audi pre sense rear uses additional radar sensors to detect potential rear-end collisions within system limits. In combination with the optional parking aid plus or parking assistant, exit warning and rear cross-traffic assist are also included).
- Seats: Front sports seats
- Steering wheel: Leather steering wheel in 3-spoke design with multifunction plus (with 14 multifunction buttons for convenient operation of the available infotainment features such as audio skip, telephony, NAV button or the freely programmable button - adjustable in height and distance - with full-size airbag - shift paddles for manual changing of the driving modes)
- Tour Assistance Package (adaptive cruise control - traffic jam assist - predictive efficiency assist - Audi pre sense city (standard) - Audi pre sense front - evasive steering assist - turning assist - camera-based traffic sign recognition - high beam assist - Audi active lane assist)
- Towbar (ball head mechanically swiveling with electric release - ball rod and head made of forged steel - operation via push button in the luggage compartment - trailer stabilization via the electronic stability control (ESC) The integrated swiveling system socket allows continuous operation of electrical devices in the trailer or caravan while driving and can be swivelled invisibly behind the bumper apron when not in use)
- Wheel: Alloy wheels, 20" 5-arm falx, matte black, diamond-turned (8.0 J x 20, tires 255/45 R 20)
- Business package (Audi phone box - MMI Navigation plus (incl. driver information system with color display) - Audi virtual cockpit - Heated front seats - Automatically dimming interior mirror - Electrically adjustable, heated and folding exterior mirrors, automatically dimming on both sides incl. curb view function for the passenger mirror - High beam assist - Manual sunshade for rear door windows)
- Electrically adjustable, heated, and folding exterior mirrors with automatic dimming on both sides (including curb view function for the passenger-side exterior mirror with integrated LED turn signal, including heated windshield washer nozzles, convex, flat, or aspherical mirror glass. The curb view function tilts the passenger-side exterior mirror downwards when reverse gear is engaged, providing the driver with a better view of the curb).
- Exterior mirror housings in carbon fiber
- Glazing: Privacy glazing (tinted windows) for acoustic glazing (tinted rear window, rear door and side windows)
- High-beam assist (within the system's limitations, it automatically detects oncoming headlights, taillights of other road users, and light sources in built-up areas. Depending on the traffic situation, the high beams are automatically switched on or off. The system thus improves the driver's visibility and increases comfort.)
- Paint finish: Metallic
- Parking aid plus (supports the driver with acoustic signals and a display message when parking and maneuvering. The parking aid is activated by engaging reverse gear or via a button in the center console, or automatically when the distance to a detected object is less than 90 cm. Automatic activation can be switched on and off.)
- Reversing camera (Within the system's limits, the reversing camera captures the area behind the vehicle and displays it on the MMI screen using dynamic display elements. The system allows a choice between perpendicular parking mode and trailer mode (in conjunction with a factory-installed trailer hitch). Depending on the selected mode, the calculated driving lane or a guide line for coupling a trailer is displayed. The reversing camera is discreetly integrated into the tailgate handle.)
- Storage and luggage compartment package (flexible transport of items and comfort while traveling; consisting of: - storage net on the back of the front seatbacks - cup holder in the rear center armrest - storage compartment on the driver's side - lockable glove compartment in the luggage compartment: - luggage compartment net - net in the recess on the left - tension strap on the trunk side (not available for SQ5 Sportback))



Brief expert findings

| | |
|----------------------|--|
| Documents submitted | At the time of the inspection, the vehicle registration certificate Part 2 (title) was available, but the vehicle registration certificate Part 1 (document) was not. (Copy) |
| VIN comparison | The vehicle identification number (VIN) was read from the vehicle and its conformity with the submitted documents was confirmed by the undersigned during the inspection. |
| Inspection | The inspection conditions were sufficient for the assessment of the vehicle. Lifting equipment and/or a pit were available for examining the vehicle. |
| Test drive | No test drive/shunting maneuver was carried out during the inspection of the vehicle. |
| Engine function test | An engine test run was performed. |

Value reducing factors

| No. | Component group | Description |
|-----|------------------------|--|
| 1 | Door - rear left side | Door - Scratch(es) - Smart repair |
| 2 | Door - front left side | Door - Scratch(es) - Smart repair |
| 3 | Interior | Interior (Hundegeuruch) - Odour - Ozone treatment |
| 4 | Mudguard - left side | Wheel arch - Scratch(es) - Smart repair |
| 5 | Rear bumper | Rear bumper - Scratch(es) - Smart repair |
| 6 | Wheel / tyres | Alloy rim - front right side - Scratched - Loss in value |
| 7 | Vehicle glazing | Windscreen (Rissbildung) - Stone chips - Replace |
| 8 | Front bumper | Front bumper (+ Zierleiste vorne erneuern) - Scratched - Paint |

Wear and tear

| No. | Component group | Description |
|-----|-----------------|---|
| 1 | Front bumper | Cover bumper - front - Scratch(es) - No deduction |
| 2 | Bonnet | Bonnet - Stone chips - No deduction |
| 3 | 2nd wheel set | Alloy rim set - complete (Kein Teil der Ausstattung) - Scratch(es) - No deduction |
| 4 | Wheel / tyres | Alloy rim - front left side - Scratch(es) - No deduction |

The vehicle shows signs of wear and tear commensurate with its age and use.

Previous damages

| No. | Previous damage | Extent of damage (Net) |
|-----|--|------------------------|
| 1 | Front, Provided by user / customer, from 18 Jun 2024 | 2.151,73 € |

Repainting

| No. | Repainting |
|-----|---|
| 1 | Bonnet, Professionally carried out, Invoice of repair done Non-existent |

Paint coat thickness measurement

| | |
|--------|--------|
| Bonnet | 158 µm |
|--------|--------|



Order/Scope of Order

An order was placed to prepare a sales report for the described vehicle. This report includes the following:

- Description of key vehicle information
- Documentation of equipment features
(Delivery by third-party service providers)
- Documentation of damage, defects, missing parts
- Documentation of prior damage, unrepaired prior damage, repainting
- A brief visual or functional inspection of the equipment details, if possible.
(Functional testing of driver assistance systems is not included in the scope of services!)
- a photographic documentation of the vehicle

Basis for the order

This product is based on the guidelines for vehicle returns and valuations published by Alphabet Fleet GmbH. The expert makes the specific findings in each individual case objectively, within the framework of the prescribed standards, based on their own expertise.

The vehicle inspection takes place in a fully assembled, unassembled state.

Damage or defects that can only be detected during disassembly/diagnostic work or through further investigation remain within the realm of prognostic risk. An increased risk exists due to concealed defects caused by fraudulent misrepresentation and which were not identifiable by the expert.

Damage or defects resulting from normal use or wear and tear of the vehicle will be accepted in accordance with the applicable standard.

There was no explicit identification or monetary consideration of the expected features within the product.

Features which, in their nature and extent, slightly exceed normal use but do not constitute unacceptable damage, will be documented and indicated as signs of wear, if applicable.

Damage or defects that, according to the applicable standard, can no longer be attributed to normal use or wear and tear are listed under "Value Reducing Factors" in the product description.

Depending on the product specification, a monetary ID can be provided. If this takes place, the costs can be 100% d or pro rata depending on the vehicle's age and mileage.

Previous damages

According to available information previous damages were repaired at the vehicle. Traces of repairs, which allow conclusions about the area of repair, were not recognizable during the inspection.

Comments

Der beiliegende Winterradsatz ist kein Bestandteil der Ausstattung.



Figure 1: Diagonal front (left)



Figure 2: Diagonal front (right)



Figure 3: Diagonal rear (left)



Figure 4: Diagonal rear (right)



Figure 5: Interior - front

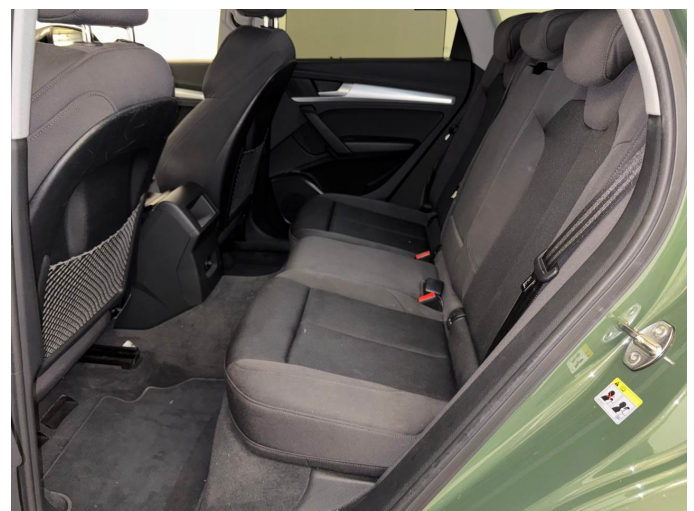


Figure 6: Interior - rear



Figure 7: Instrument cluster



Figure 8: Instrument panel



Figure 9: Interior 360° view



Figure 10: Cargo area



Figure 11: VIN



Figure 12: Mounted tyres



Figure 13: Documents



Figure 14: Additional tyres



Figure 15: Navigation

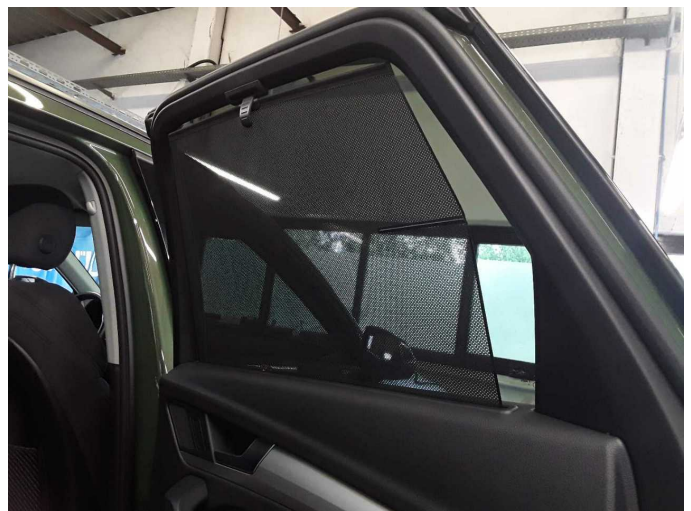


Figure 16: Misc.

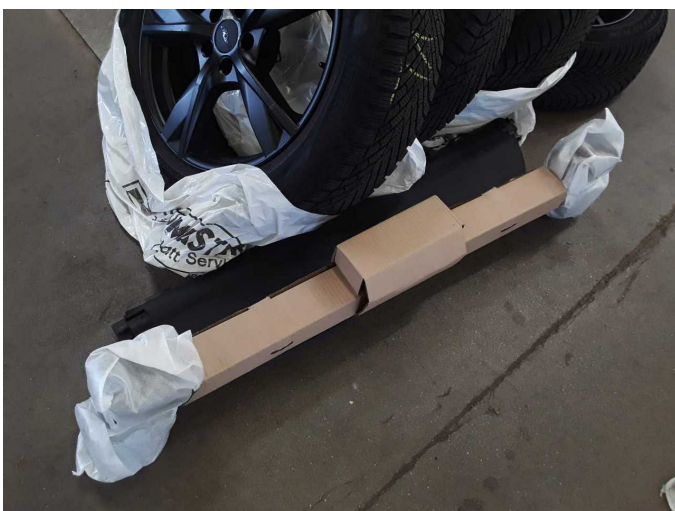


Figure 17: Misc.



Figure 18: Misc.



Figure 19: Misc.



Figure 20: Misc.



Figure 21: Misc.



Figure 22: Misc.



Figure 23: Misc.



Figure 24: Misc.



Figure 25: Misc.



Figure 26: Misc.

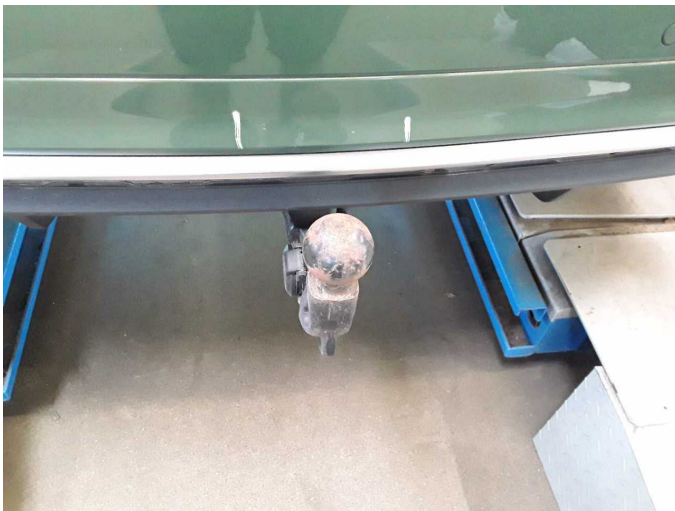


Figure 27: Misc.



Figure 28: Misc.



Figure 29: Misc.



Figure 30: Misc.



Figure 31: Misc.



Damage 1: Door - rear left side: Door - Scratch(es) - Smart repair



Damage 1: Door - rear left side: Door - Scratch(es) - Smart repair



Damage 2: Door - front left side: Door - Scratch(es) - Smart repair



Damage 2: Door - front left side: Door - Scratch(es) - Smart repair



Damage 4: Mudguard - left side: Wheel arch - Scratch(es) - Smart repair



Damage 4: Mudguard - left side: Wheel arch - Scratch(es) - Smart repair



Damage 5: Rear bumper: Rear bumper - Scratch(es) - Smart repair



Damage 5: Rear bumper: Rear bumper - Scratch(es) - Smart repair



Damage 6: Wheel / tyres: Alloy rim - front right side - Scratched - Loss in value



Damage 6: Wheel / tyres: Alloy rim - front right side - Scratched - Loss in value



Damage 7: Vehicle glazing: Windscreen (Rissbildung) - Stone chips - Replace



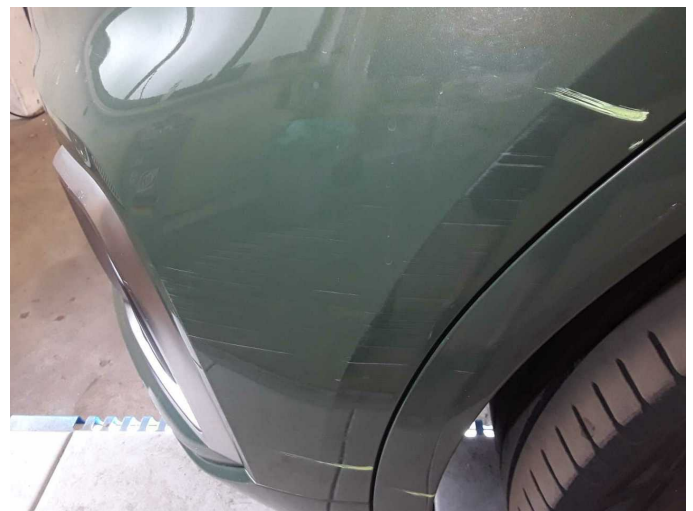
Damage 7: Vehicle glazing: Windscreen (Rissbildung) - Stone chips - Replace



Damage 8: Front bumper: Front bumper (+ Zierleiste vorne erneuern) - Scratched - Paint



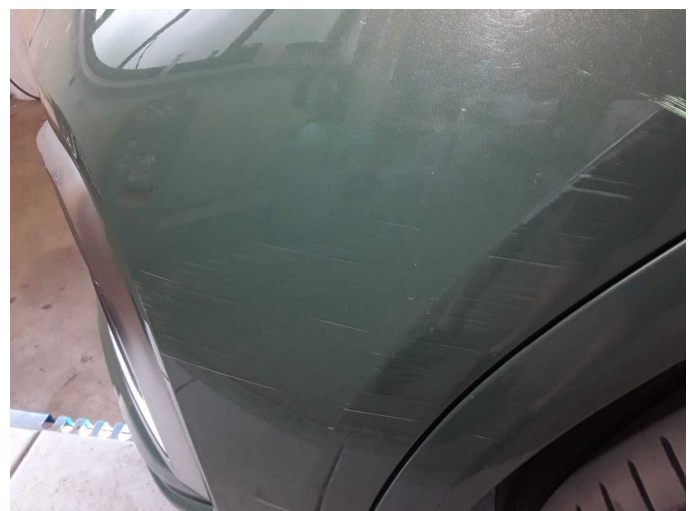
Damage 8: Front bumper: Front bumper (+ Zierleiste vorne erneuern) - Scratched - Paint



Damage 8: Front bumper: Front bumper (+ Zierleiste vorne erneuern) - Scratched - Paint



Damage 8: Front bumper: Front bumper (+ Zierleiste vorne erneuern) - Scratched - Paint



Damage 8: Front bumper: Front bumper (+ Zierleiste vorne erneuern) - Scratched - Paint



Damage 8: Front bumper: Front bumper (+ Zierleiste vorne erneuern) - Scratched - Paint



Damage 8: Front bumper: Front bumper (+ Zierleiste vorne erneuern) - Scratched - Paint



Damage 8: Front bumper: Front bumper (+ Zierleiste vorne erneuern) - Scratched - Paint



Damage 8: Front bumper: Front bumper (+ Zierleiste vorne erneuern) - Scratched - Paint



Damage 8: Front bumper: Front bumper (+ Zierleiste vorne erneuern) - Scratched - Paint



Wear and tear 1: Front bumper: Cover bumper - front - Scratch(es) - No deduction



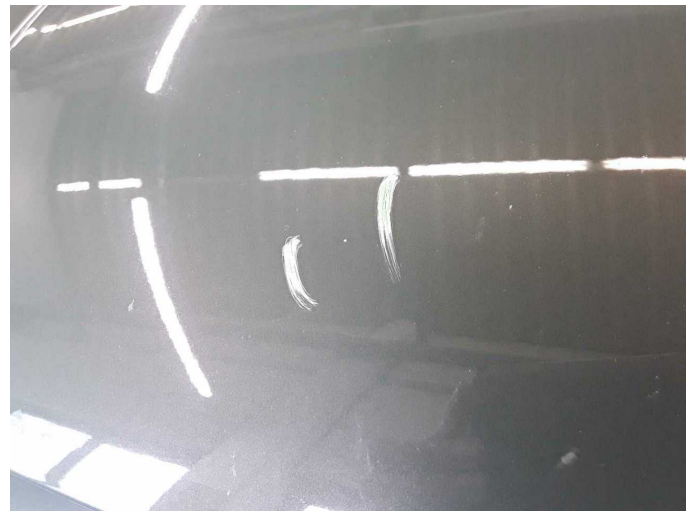
Wear and tear 1: Front bumper: Cover bumper - front - Scratch(es) - No deduction



Wear and tear 2: Bonnet: Bonnet - Stone chips - No deduction



Wear and tear 2: Bonnet: Bonnet - Stone chips - No deduction



Wear and tear 2: Bonnet: Bonnet - Stone chips - No deduction



Wear and tear 4: Wheel / tyres: Alloy rim - front left side - Scratch(es) - No deduction



Wear and tear 4: Wheel / tyres: Alloy rim - front left side - Scratch(es) - No deduction



Repainting 1: Bonnet



Repainting 1: Bonnet



Wartungshistorie

(gemäß Auftraggeber Informationen)

Fahrgestellnummer: WAUZZZF3N2005233
Hersteller / Modell: AUDI AUDI Q5 40 TDI quattro S tronic S line

| Datum | KM-Stand | Beschreibung |
|------------|----------|--|
| 28.01.2026 | 188.596 | Motoröl b. Wartung; Ölfilter ern; Ölwechsel; Wartung Sonstiges |
| 11.08.2025 | 173.281 | Bremsflüssigkeit; Bremsflüssigkeit ern; Getriebeöl ern/prüfen; Kraftstofffilter ern; Motoröl b. Wartung; Ölfilter ern; Regelwartungsdienst; Reparatur Sonstiges; Wartung Sonstiges |
| 25.06.2025 | 165.077 | Bremsklötze hinten; Bremsklötze vorne |
| 24.02.2025 | 151.502 | Reparatur Sonstiges; Systemtest/Eigendiagnose |
| 27.11.2024 | 143.699 | Systemtest/Eigendiagnose |
| 07.11.2024 | 141.874 | AU; Luftfiltereinsatz ern; Motoröl b. Wartung; Ölfilter ern; Regelwartungsdienst; Systemtest/Eigendiagnose; Wartung Sonstiges |
| 20.03.2024 | 111.905 | Bremsbelagfühler ern; Bremse Sonstiges; Bremsklötze hinten; Bremsklötze vorne; Bremsscheiben hinten; Bremsscheiben vorne; Getriebeöl ern/prüfen; Kraftstofffilter ern; Motoröl b. Wartung; Ölfilter ern; Regelwartungsdienst; Reparatur Sonstiges; Wartung Sonstiges |
| 08.01.2024 | 102.707 | Systemtest/Eigendiagnose |
| 15.08.2023 | 86.924 | Bremsbelagfühler ern; Bremse Sonstiges; Bremsflüssigkeit; Bremsflüssigkeit ern; Bremsklötze vorne; Regelwartungsdienst |
| 05.07.2023 | 81.350 | Motoröl b. Wartung; Ölfilter ern; Ölwechsel; Wartung Sonstiges |
| 24.11.2022 | 55.131 | Bremsbelagfühler ern; Bremse Sonstiges; Bremsklötze hinten; Bremsklötze vorne; Bremsscheiben vorne; Getriebeöl ern/prüfen; Kraftstofffilter ern; Motoröl b. Wartung; Ölfilter ern; Regelwartungsdienst; Reparatur Sonstiges; Wartung Sonstiges |
| 13.05.2022 | 27.116 | Motoröl b. Wartung; Ölfilter ern; Regelwartungsdienst; Wartung Sonstiges |