

# MACDAM

## Ford \* Trans.Conne. FL'18

### Vehicle information

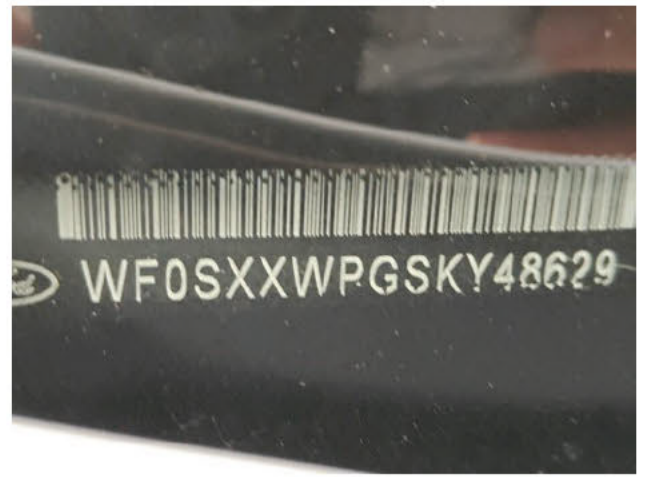
Make:	<b>Ford</b>	License:	
Gearbox:	<b>MAN 6 VIT</b>	Body color:	
Model:	<b>* Trans.Conne. FL'18</b>	VIN:	<b>WF0SXXWPGSKY48629</b>
Fuel type:	<b>Diesel</b>	Power:	<b>74 kW</b>
Version:	<b>Tr.Con.TDCi 100 20 L2 H HP Tr.</b>	First registration	<b>12/09/2019</b>
Mileage:	<b>237835 km</b>	N° of doors:	

### Damage summary

<b>Front</b>	<b>3</b>
<b>Interior</b>	<b>3</b>
<b>Left</b>	<b>2</b>
<b>Rear</b>	<b>2</b>
<b>Right</b>	<b>5</b>
<b>Roof &amp; others</b>	<b>1</b>

### Commercial pictures





**Options according to the inspector**

Central consol F	Yes	Hook	Yes	Radio multimedia	Yes
Telephone equipment	Yes				

**Damages**

--	--	--	--	--	--

**Bodywork**

Not original part

Remove lettering

Roof & others

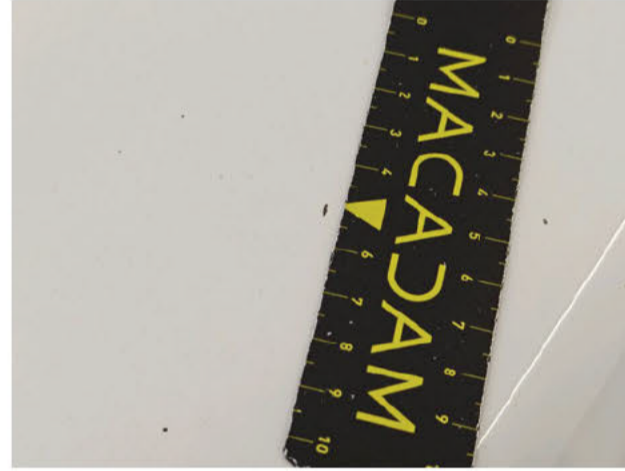


**Bonnet**

Stone chip(s)

Repair and paint (complete)

Front

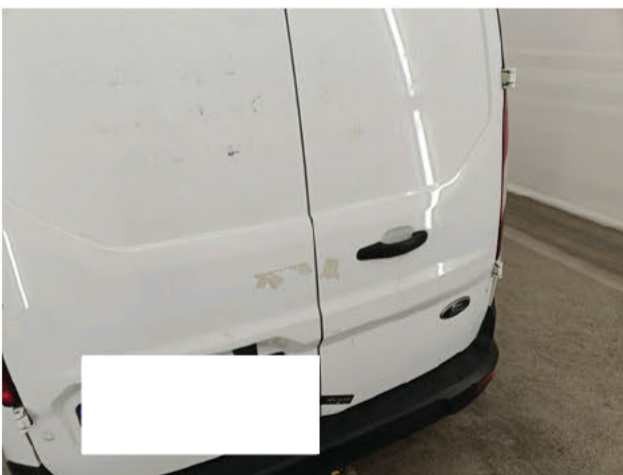


**Boot door panel RR**

Deformed / Strained

Repair and paint (complete)

Rear

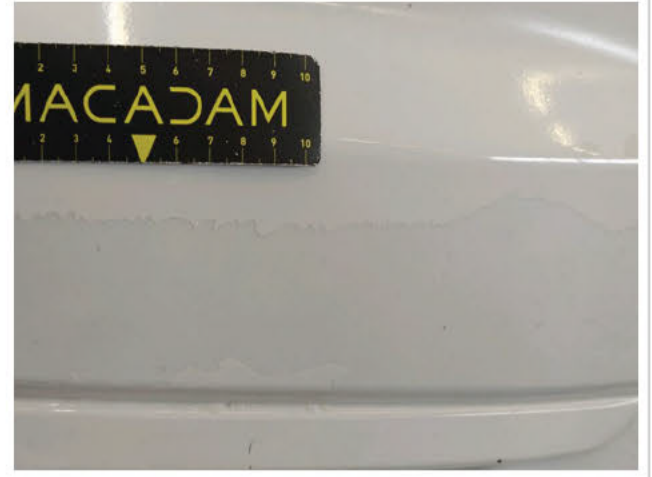


**Bumper F**

Scratch(es)

Repair and paint (complete)

Front



**Bumper R**

Scratch(es)

Replace

Rear



**Door FR**

Dent(s) and scratch(es)

Repair and paint (complete)

Right

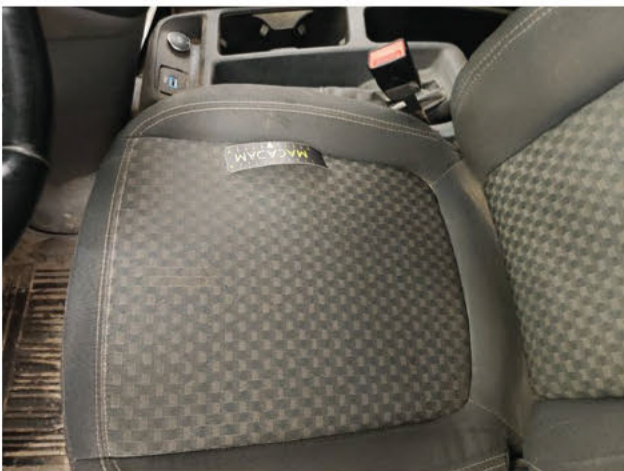


**Interior**

Stain

Cleaning

Interior



**Roof pillar R**

Scratch(es)  
Repair and paint (complete)  
Right



**Seat cover FL**

Worn  
Replace  
Interior



**Seat cover FR**

Burned  
Replace  
Interior

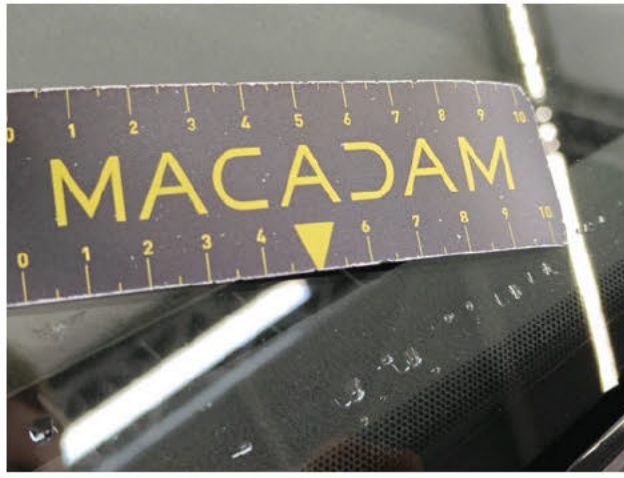


**Sliding door R**

Dent(s) and scratch(es)  
Repair and paint (complete)  
Right



**Windscreen**  
Stone chip(s)  
Windscreen repair  
Front



**Wing FL**  
Scratch(es)  
Repair and paint (complete)  
Left



**Wing FR**  
Bad repair  
Repair and paint (complete)  
Right



**Wing RL**  
Dent(s)  
Repair and paint (complete)  
Left



**Wing RR**  
Scratch(es)  
Repair and paint (complete)  
Right



## Tyres

### Front Left

Winter

205/60/16/96/H

Continental

7.0 mm

### Front Right

Winter

205/60/16/96/H

Continental

6.8 mm

### Rear Left

Winter

205/60/16/96/H

Continental

8.0 mm

### Rear Right

Winter

205/60/16/96/H

Continental

7.3 mm

## Checks

CO2 Emission	<b>123</b>	Digital maintenance	<b>N/A</b>
Luggage cover	<b>Yes</b>	Number head rests	<b>2</b>
Number of keys total	<b>2</b>	Reset to factory settings	<b>No, not possible</b>
Service book	<b>Yes</b>	User's manual	<b>Yes</b>

### Information on the content and the scope of the inspection report:

- The assessment is based on the sales standards specified by the customer.
- Acceptable usage damages according to the sales standards are not always documented in this status report.
- The specified repair methods and/or resulting repair times have been determined, taking into account modern industrial repair methods.
- The purchasing dealer should assess individual repair costs.
- The inspection was carried out in a non-disassembly condition. Macadam cannot be held responsible for any missing information. For further information, please contact the seller.