

## Expertise

Protocol number: 45386931  
Order No. / Reference: 26268680-2  
Inspection date: 8 May 2026

Manufacturer: Volvo

Model: XC90 T8 AWD Recharge Plus Bright

VIN: YV1LFH5V4P1974805



### Vehicle details

#### Manufacturer / Type / Model / Equipment

Volvo XC90 T8 AWD Recharge Plus Bright

**Vehicle Identification number** YV1LFH5V4P1974805

**Mileage (Read)** 88,467 km

**First registration** 17 Mar 2023

**Number of holders** 1

**Power / Engine displacement** 228 kw / 1,969 ccm

**Fuel type / Cylinder** Hybr.B/E ext.auf / 4

**Gearbox / Number of gears** Automatic / 8

**Type of drive** All-wheel drive

**Type of vehicle** SUV

**Colour / colour code** Denim Blau-Metallic

**Doors / Seats** 5 / 7

**Upholstery type** Leather

**Colour of upholstery** Anthracite-Black

**Vehicle with smoke odor** no

**readiness to drive** Not roadworthy /  
moveable



## Vehicle details

<b>Maintenance booklet / proof</b>	digital proof / complete	<b>Next maintenance in</b>	0 km
<b>Last service on / at</b>	04/2025 at 61,990 km		
<b>Key is / should be</b>	2 / 2	<b>FZG documents</b>	ZB#2 (B) was available (copy), ZB#1 (S) was not available.
		<b>Letter No.</b>	GQ219902
<b>Previous damage / Accident</b>	Detectable	<b>Repainting</b>	None detectable
<b>Inspection conditions</b>	sufficient	<b>Lifting equipment / pit</b>	yes
<b>Test drive</b>	short drive on the company premises	<b>Engine function test</b>	Performed
<b>readiness to drive</b>	Not roadworthy / moveable		
<b>Manufacturer key number/ type code number</b>	9101 / BUL 00009		
<b>Emission standard</b>	EURO6;WLTP;AP;PI/CI; M, N1 I	<b>fine dust sticker</b>	
<b>Permitted total weight</b>	2,950 kg	<b>Empty weight</b>	

## Tyres

### Mounted tyres

#	Tyre size	Type of tyre	Manufacturer	Tread depth
1)	275/45 R20 110V	Winter tyres on Light alloy	Michelin	5mm / 5mm
2)	275/45 R20 110V	Winter tyres on Light alloy	Michelin	6mm / 6mm

### Additional tyres

#	Tyre size	Type of tyre	Manufacturer	Tread depth
1)	275/45 R20 110H	All-season tyres on Light alloy	Michelin	5mm / 5mm
2)	275/45 R20 110H	All-season tyres on Light alloy	Michelin	5mm / 5mm

### Replacement

Typ	Tyre size	Type of tyre	Manufacturer	Tread depth
Tirefit		Expiration date 03/2027		

**Legend: Tread depth information for the left tire is listed first, for the right tire it is listed second on the axle in the direction of travel.**



## Equipment

### Standard equipment

- ABS - Anti-lock Braking System
- Passenger side airbag can be deactivated
- Active safety belts with belt tensioners
- Aluminum loading sill protector in the luggage compartment
- Dashboard and door trim in leather look with contrasting stitching
- Electrically folding exterior mirrors
- Heated exterior mirrors and rear window (automatic)
- Attachment system for carrier bags in the luggage compartment
- Fog sensor for automatic activation of the defroster function
- On-board computer
- third brake light
- Chrome applications in the front bumper
- Roof edge spoiler
- Aluminum roof rails (integrated)
- Digital services including Google Maps navigation system
- Driver Assistance
- Parking assistance, front and rear
- Electronic differential lock
- Electronic Stability Control
- Electric windows front and rear
- Chrome window surround
- Bottle holder in the luggage compartment
- Luggage compartment partition net
- Seat belt height adjustment front and rear (2nd row of seats)
- rear window wiper
- Intelligent driver information system
- Keyless Drive (electronic access system)
- Child safety lock for the rear doors (electric)
- Air conditioning for the 3rd row of seats
- Headrests of the 2nd row of seats can be folded down (electrically)
- Charging cable Schuko/Type 2 (Mode 2)
- Steering wheel adjustable for height and reach
- Steering wheel: Multifunction buttons on the steering wheel
- Front center armrest including cup holder
- Otto particulate filter
- Electric parking brake
- Pollen filter
- Radio: Premium Sound audio system by Harman/Kardon
- Radio accessories: Two USB-C ports on the back of the center console
- Run-off Road Protection
- Wheels: Tire sealant
- Rear view camera
- Whiplash Protection System (WHIPS)
- Safety braking system with disc brakes all around (internally ventilated)
- Acoustic Vehicle Alerting System (AVAS)
- Airbags
- All-wheel drive (AWD)
- Ambient lighting
- Android infotainment system
- Armrests with integrated storage compartment and cup holders for the 3rd row of seats (left and right)
- Electrically adjustable exterior mirrors
- Outdoor temperature display
- Hill Descent Control (HDC)
- Hill Start Assist (HSA)
- LED turn signals integrated into the exterior mirrors
- Brake energy recuperation
- Chrome applications on the rear of the vehicle
- Chrome trim strip in the door sill area with Recharge lettering
- Deactivating the high-voltage battery
- Digital Instrumentation 2nd Gen.
- Driver Awareness
- Aluminum door sill plates with Recharge lettering, front and rear
- Advanced air purification system with fine dust filtration according to air quality standard PM2.5
- Automatic emergency braking
- Front grille in waterfall design in chrome
- Transmission: 8-speed automatic transmission
- Automatic tailgate
- Heated rear window
- Interior and exterior mirrors automatically dimming
- ISOFIX mounting for the outer rear seats
- Keyless Start
- Automatic climate control with 4-zone temperature control
- Headrests (7)
- Paint finish: Solid
- Charging box under the cargo floor
- Cargo area roller blind (semi-automatic)
- Steering wheel: Steering wheel heating
- Illuminated makeup mirror for driver and front passenger
- Emergency brake lights
- Package: Seat Comfort Package
- Parking ticket holder
- Upholstery: Leather/leatherette comfort seats
- Radio accessories: Smartphone integration Apple CarPlay
- Rain sensor with automatic light function
- Tire pressure monitoring system
- Wheels: 20" 5-spoke alloy wheels, diamond cut/high-gloss black
- Safety Assistance
- Speed-sensitive power steering



- Seats: Rear bench seat of the 2nd row in a 40/20/40 ratio or completely foldable
- Seats: Heated front seats
- Electric auxiliary heater with timer
- Power socket
- Textile floor mat for the 3rd row of seats
- First aid kit and warning triangle
- Lashing eyes in the luggage compartment (foldable)
- Warning tone/indicator when seat belts are not fastened (for all seats)

- Seats: Third row of seats (7-seater)
- Seats: Child seat integrated in the middle rear seat (2nd row).
- Seats: Heated rear seats (outer seats of the 2nd row)
- Sun blinds for the rear side windows (integrated)
- Start/Stop technology
- Phone: Inductive smartphone charging system
- Premium textile floor mats, front and rear
- Glazing: Colored glazing
- Preparation for Trailer Stability Assist (TSA)
- Immobiliser
- Central locking system with two remote controls and integrated emergency keys

### Extra equipment

- Chassis: Adaptive air suspension with Four-C technology (Continuously Controlled Chassis Concept) with adjustable modes Comfort, Eco, Dynamic, Off Road including automatic leveling and entry/rear lowering (4/5 cm)
- Glazing: Side and rear windows tinted (from the B-pillar back)

- Windscreen, heater
- Paint finish: Metallic paint
- Parking camera with 360° surround view (including front, side and rear parking aid with automatic braking intervention (rear))

### Retrofitted equipment

- 20 5-Spoke Black Diamond Cu-1094 with Michelin Winter tires

- Charging cable Type 2 / Type 2 (Mode 3), 7m length, single-phase, 16A

## Brief expert findings

Documents submitted	At the time of the inspection, the vehicle registration certificate Part 2 (title) was available, but the vehicle registration certificate Part 1 (document) was not. (Copy)
VIN comparison	The vehicle identification number (VIN) was read from the vehicle and its conformity with the submitted documents was confirmed by the undersigned during the inspection.
Inspection	The inspection conditions were sufficient for the assessment of the vehicle. Lifting equipment and/or a pit were available for examining the vehicle.
Test drive	A short maneuvering and shunting exercise was carried out on the company premises.
Engine function test	An engine test run was performed.
readiness to drive	The vehicle was not capable of driving under its own power at the time of inspection, but can be moved on its own axle with the aid of assistance.

## Value reducing factors

No.	Component group	Description
1	Sill - right side	Sill - dent(s) - Smart repair
2	Mudguard - left side	Wheel well extension - Scratched - Smart repair
3	Engine	Engine cover - Damage caused by marten / rodent - Replace
4	Wheel / tyres	Tyre - rear left side - Broken / torn - Replace
5	Wheel / tyres	Alloy rim - front right side - Scratched - Loss in value
6	Misc.	Inspection / maintenance - Due - Perform
7	Vehicle glazing	Windscreen (mit Rissbildung) - Stone chips - Replace

## Wear and tear



No.	Component group	Description
1	Front bumper	Front bumper - Stone chips - No deduction
2	Bonnet	Bonnet - Stone chips - No deduction
3	Door - front right side	Door edge - Scratch(es) - No deduction
4	Wheel / tyres	Alloy rim - rear right side - Scratch(es) - No deduction
5	Body	Body - Scratch(es) - No deduction

The vehicle shows signs of wear and tear commensurate with its age and use.

## Missing parts

### Description

Equipment - charging cable (für Haushaltssteckdose)

## Previous damages

No.	Previous damage	Extent of damage (Net)
1	Front, Provided by user / customer, from 18 Aug 2023	1.260,30 €
2	Front, Provided by user / customer, from 30 Jan 2026	1.558,32 €

## Order/Scope of Order

An order was placed to prepare a sales report for the described vehicle. This report includes the following:

- Description of key vehicle information
- Documentation of equipment features  
(*Delivery by third-party service providers*)
- Documentation of damage, defects, missing parts
- Documentation of prior damage, unrepaired prior damage, repainting
- A brief visual or functional inspection of the equipment details, if possible.  
(*Functional testing of driver assistance systems is not included in the scope of services!*)
- a photographic documentation of the vehicle

## Basis for the order

This product is based on the guidelines for vehicle returns and valuations published by Alphabet Fleet GmbH. The expert makes the specific findings in each individual case objectively, within the framework of the prescribed standards, based on their own expertise.

The vehicle inspection takes place in a fully assembled, unassembled state.

Damage or defects that can only be detected during disassembly/diagnostic work or through further investigation remain within the realm of prognostic risk. An increased risk exists due to concealed defects caused by fraudulent misrepresentation and which were not identifiable by the expert.

Damage or defects resulting from normal use or wear and tear of the vehicle will be accepted in accordance with the applicable standard.

There was no explicit identification or monetary consideration of the expected features within the product.

Features which, in their nature and extent, slightly exceed normal use but do not constitute unacceptable damage, will be documented and indicated as signs of wear, if applicable.

Damage or defects that, according to the applicable standard, can no longer be attributed to normal use or wear and tear are listed under "Value Reducing Factors" in the product description.

Depending on the product specification, a monetary ID can be provided. If this takes place, the costs can be 100% d or pro rata depending on the vehicle's age and mileage.



## Previous damages

According to available information previous damages were repaired at the vehicle. Traces of repairs, which allow conclusions about the area of repair, were not recognizable during the inspection.



Figure 1: Misc.



Figure 2: Misc.



Figure 3: Misc.



Figure 4: Misc.



Figure 5: Misc.

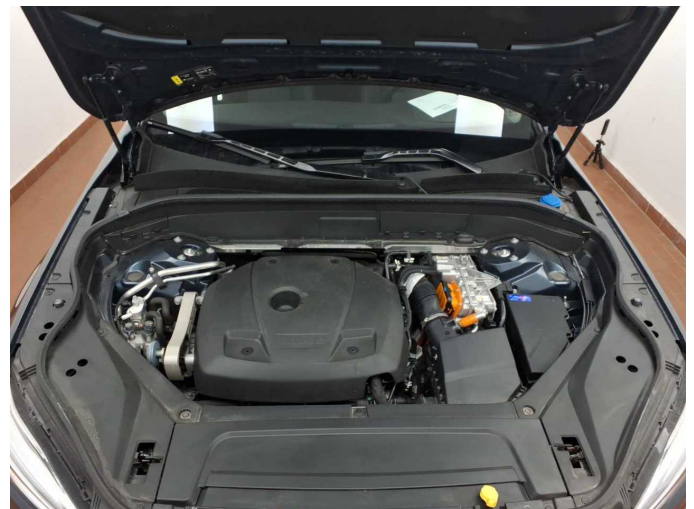


Figure 6: Misc.



Figure 7: Misc.



Figure 8: Misc.



Figure 9: Misc.



Figure 10: Misc.



Figure 11: Misc.



Figure 12: Misc.



Figure 13: Misc.



Figure 14: Misc.



Figure 15: VIN



Figure 16: Additional tyres



Figure 17: Mounted tyres



Figure 18: Diagonal front (left)



Figure 19: Diagonal front (right)



Figure 20: Diagonal rear (right)



Figure 21: Diagonal rear (left)

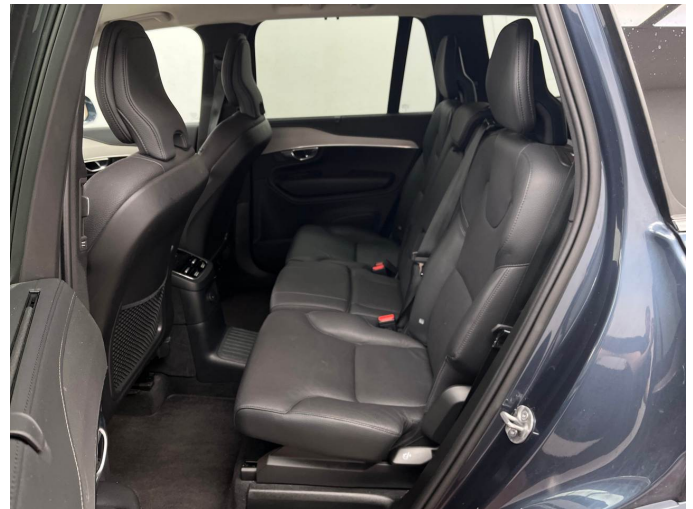


Figure 22: Interior - rear



Figure 23: Cargo area



Figure 24: Interior - front



Figure 25: Instrument panel



Figure 26: Navigation

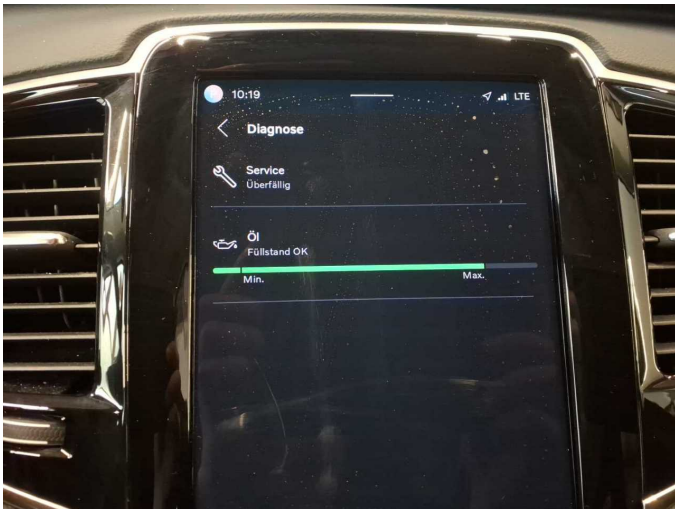


Figure 27: Documents

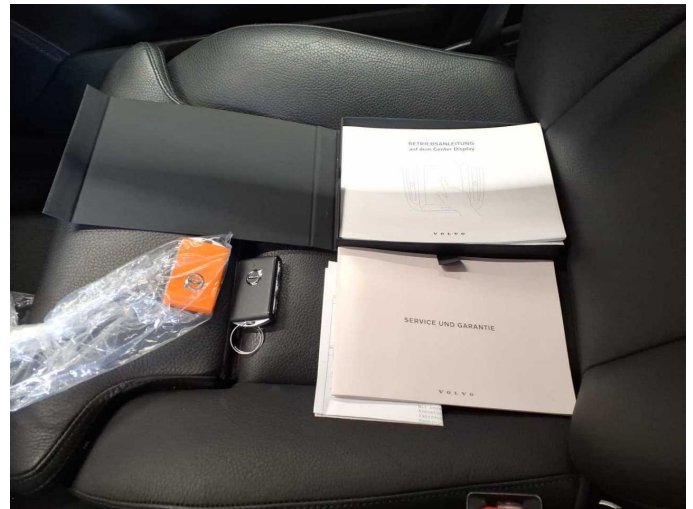


Figure 28: Documents



Figure 29: Documents



Figure 30: Interior 360° view



**Damage 1:** Sill - right side: Sill - dent(s) - Smart repair



**Damage 1:** Sill - right side: Sill - dent(s) - Smart repair



**Damage 2:** Mudguard - left side: Wheel well extension - Scratched - Smart repair



**Damage 2:** Mudguard - left side: Wheel well extension - Scratched - Smart repair



**Damage 3:** Engine: Engine cover - Damage caused by marten / rodent - Replace



**Damage 3:** Engine: Engine cover - Damage caused by marten / rodent - Replace



**Damage 4:** Wheel / tyres: Tyre - rear left side - Broken / torn - Replace



**Damage 4:** Wheel / tyres: Tyre - rear left side - Broken / torn - Replace



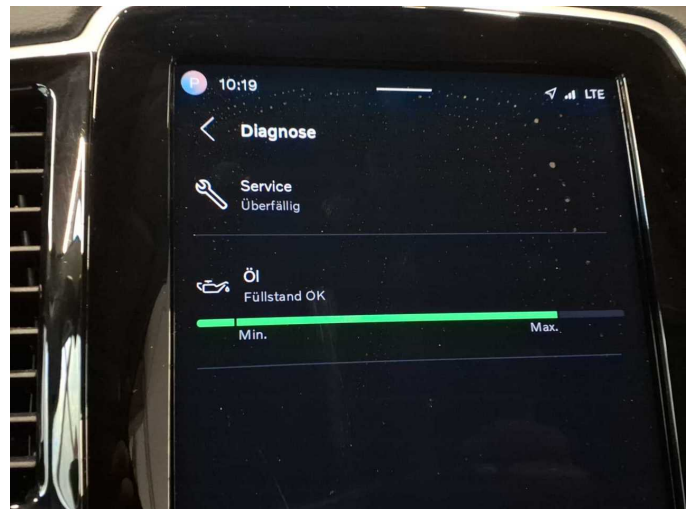
**Damage 4:** Wheel / tyres: Tyre - rear left side - Broken / torn - Replace



**Damage 5:** Wheel / tyres: Alloy rim - front right side - Scratched - Loss in value



**Damage 5:** Wheel / tyres: Alloy rim - front right side - Scratched - Loss in value



**Damage 6:** Misc.: Inspection / maintenance - Due - Perform



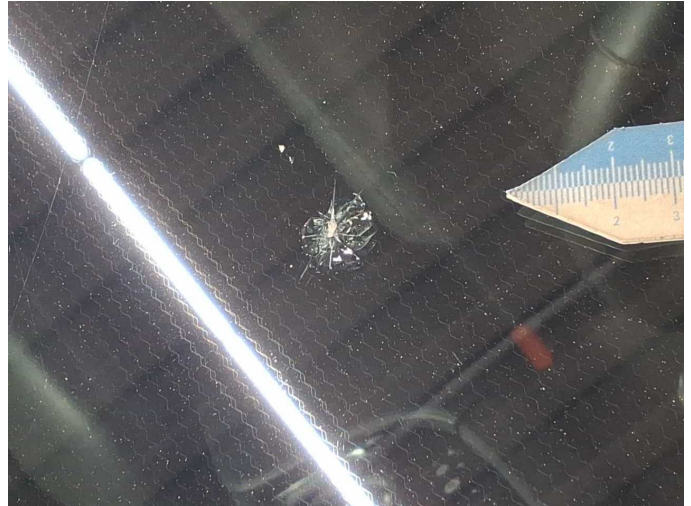
**Damage 7:** Vehicle glazing: Windscreen (mit Rissbildung) - Stone chips - Replace



**Damage 7:** Vehicle glazing: Windscreen (mit Rissbildung) - Stone chips - Replace



**Damage 7:** Vehicle glazing: Windscreen (mit Rissbildung) - Stone chips - Replace



**Damage 7:** Vehicle glazing: Windscreen (mit Rissbildung) - Stone chips - Replace