

Expertise

Protocol number: 44261509
Order number / reference: 25921506
Inspection date: 6 Mar 2026

Manufacturer: Mercedes-Benz

Model: 317 CDI Sprinter Standard HA 9G-TRONIC PRO

VIN: W1V3KBFZ8TP864579



Vehicle details

Manufacturer / Type / Model / Equipment

Mercedes-Benz 317 CDI Sprinter Standard HA 9G-TRONIC PRO

Vehicle Identification number W1V3KBFZ8TP864579

Mileage (Read) 16,815 km

First registration 6 Oct 2025

Number of holders 1

Power / Engine displacement 125 kw / 1,950 ccm

Fuel type / Cylinder Diesel / 4

Gearbox / Number of gears Automatic / 9

Type of drive Rear drive

Type of vehicle Van

Colour / colour code Arktikweiss

Doors / Seats 4 / 3

Upholstery type Cloth

Colour of upholstery Black

Type of use rental car



Vehicle details

Maintenance booklet / proof	digital proof / complete	Next maintenance in	563 Tag(e)
Key is / should be	1 / 2	FZG documents	ZB#2 (B) was available (copy), ZB#1 (S) was not available
		Letter No.	HP676417
Previous damage / Accident	None detectable	Repainting	None detectable
Inspection conditions	sufficient	Lifting equipment / pit	No
Test drive	Not performed	Engine function test	Performed
Manufacturer key number/ type code number	2222 / BSU 63509		
Emission standard	EURO6;WLTP;EB;PI/CI;M, N1, N2	Fine dust sticker	
Permitted total weight	3,500 kg	Empty weight	

Tyres

Mounted tyres

#	Tyre size	Type of tyre	Manufacturer	Tread depth
1)	235/65 R16 115R	Summer tyres on Steel rim with wheel cover	Continental	6mm / 6mm
2)	235/65 R16 115R	Summer tyres on Steel rim with wheel cover	Continental	6mm / 6mm

Legend: Tread depth for tires on the left is in the first place, for tires on the right is in the second place on the axle in the direction of travel



Equipment

Standard equipment

- Storage compartment above windshield
- Rear towing eye
- ADAPTIVE ESP (latest generation) with load- and speed-dependent driving dynamics control
- Active Lane Keeping Assist
- Exterior mirrors electrically adjustable and heated, left and right
- Battery: fleece battery 12 V / 92 Ah
- Brake Assist, active
- Brake lights, adaptive
- Roof: High roof
- Diesel particulate filter and SCR
- tachometer
- Electrical components for trailer socket
- Vehicle HVO capable
- Generator 14 V / 250 A
- Transmission: 9G-TRONIC
- Seatbelt warning device for driver's seat
- Grab handle for entry of driver and passenger
- Main tank 93 liters
- Intelligent speed assistant
- Tempmatic controlled air conditioning
- Headrests (2), front
- Cable duct at rear portal
- Steering wheel adjustable for tilt and height
- Headlight range adjustment
- Marker lights, side
- Navigation: Navigation pre-installation
- Package: Acoustics
- Upholstery: Cloth
- Radio: MBUX multimedia system
- Rain sensor
- Tires: Tires without specified make
- Tires: Summer tires
- Wheels: Tires 235/65 R 16 C
- Sliding door on the right, cargo/passenger compartment
- Power steering
- Seats: Driver's seat
- Jump-start contact
- Speedometer km/h
- Blind Spot Assist
- First aid kit
- Front axle with increased load capacity
- Warning triangle
- Parking light removed
- Central locking with radio remote control
- Registration certificate, Part II
- Storage compartment under cockpit
- Axle ratio $i = 3.923$
- Passenger side airbag
- Driver's side airbag
- ATTENTION ASSIST
- Electrically folding exterior mirrors
- Outside temperature display
- Hill start assist
- Brake light, third
- COC documents
- Ceiling light in the cargo/passenger compartment
- Digital operating instructions
- Entry handle on rear right corner pillar
- Driving light assistant
- Electric window regulator for driver and passenger door
- Noise measures
- Seatbelt warning device for front passenger seat
- Grab handle for entry to the cargo area sliding door on the partition wall
- HOLD function
- Clothes hooks in the driver's cab
- Instrument cluster with color display
- Paint finish: Solid paint
- Cable duct on side wall
- Steering wheel: Multifunction steering wheel
- Longitudinal beam reinforcement
- Mercedes-Benz emergency call system
- Without weight increase/decrease: 3,500 kg
- Breakdown management
- Radio: Digital Radio DAB
- Radio accessories: Communication module (LTE) for digital services
- Tires: Tires optimized for rolling resistance
- Tire pressure monitoring
- Wheels: Steel rims 6.5 J x 16
- Crosswind Assist
- Seats: Passenger seat, two-seater
- Start-stop function
- USB 5V socket
- Cruise control
- continuous partition wall
- Lashing eyes
- Pre-installation for Remote Services Plus
- Immobiliser
- Heat-insulating glass with band filter on the windshield
- Approval N1



Extra equipment

- Storage for smartphones including wireless charging
 - Reference mass at least 2611 kg required
 - Hinged lid for storage compartment
 - LED light strip in the cargo area
 - Package: Parking package with 360° camera (Parking Assistant Rear Cross Traffic Alert Drive Away Assist)
 - Wheel arch loadable
 - Seats: Driver's seat box, low
 - Phone: Smartphone integration package
- Entrance rear door
 - Wooden floor (cargo area)
 - Load securing: Lashing rails on the side wall to the side railing.
 - Package: Winter Package (WET WIPER SYSTEM - Heated seat for passenger - Heated seat for driver)
 - Seats: Driver's seat armrest
 - Seats: Suspension seat comfort version, driver's seat
 - Long-throw nozzles in I-panel

Brief expert findings

Documents submitted	At the time of the inspection, the vehicle registration certificate Part 2 (title) was available, but the vehicle registration certificate Part 1 (document) was not. (Copy)
VIN comparison	The vehicle identification number (VIN) was read from the vehicle and its conformity with the submitted documents was confirmed by the undersigned during the inspection.
Inspection	The inspection conditions were sufficient for the assessment of the vehicle. No lifting equipment or pit was available for examining the vehicle. Therefore, inspection of the vehicle's underside was only possible to a limited extent.
Test drive	No test drive/shunting maneuver was carried out during the inspection of the vehicle.
Engine function test	An engine test run was performed.

Value reducing factors

No.	Component group	Description
1	Interior	Interior - Soiled - Clean
2	Rear bumper	Parking sensors - left side (Außen, inkl. Halter) - Missing - Replace
3	Rear of vehicle	Foot plate (Kunststoffbauteil) - Scratched - Loss in value

Wear and tear

No.	Component group	Description
1	Vehicle glazing	Windscreen - Stone chips - No deduction
2	Bonnet	Bonnet - Stone chips - No deduction
3	Front bumper	Front bumper - Stone chips - No deduction
4	Interior	Interior - Scratch(es) - No deduction
5	Rear bumper	Rear bumper - Scratch(es) - No deduction

The vehicle shows signs of wear commensurate with its age and use.

Missing parts

Description

Documents - Log book
Equipment - Vehicle key



Order/Scope of order

The order was placed to prepare a sales report for the vehicle described. This includes the following:

- Description of core relevant information about the vehicle
- Documentation of equipment features
(Delivery by third-party service providers)
- Documentation of damage, defects, missing parts
- Documentation of previous damage, unrepaired previous damage, repainting
- a brief visual or functional inspection of the equipment details if possible.
(Functional tests of driver assistance systems are not included in the scope of services!)
- a photo documentation of the vehicle

Basis for the order

This product is based on the guidelines for vehicle returns and valuations of light commercial vehicles from Alphabet Fuhrparkmanagement GmbH. The expert makes the explicit findings in each individual case objectively within the framework of the specified standards based on his or her own expertise.

The vehicle inspection takes place in a disassembled state.

Damage or defects that can only be detected during disassembly/diagnosis work or through advanced knowledge remain within the scope of the prognosis risk. An extended risk exists for concealed defects caused by fraudulent deception and not identifiable by the expert.

Damage or defects resulting from normal use or wear and tear of the vehicle will be accepted according to the applicable standard.

There was no explicit identification or monetary consideration of the expected features within the product.

Features which in their nature and severity slightly exceed normal use but do not constitute unacceptable damage will be documented and identified under signs of use if necessary.

Damage or defects that can no longer be attributed to normal use or wear and tear according to the underlying standard are listed in the product under value-reducing factors.

Depending on the product specification, a monetary ID can be provided. If this takes place, the costs can be 100% d or pro rata depending on the vehicle's age and mileage.

Previous damages

No apparent prior damage that had been repaired could be found on the vehicle.

Comments

- Die Unterbodenbesichtigung war nur ebenerdig & eingeschränkt möglich.

- Das Fahrzeugdach konnte unter den gegebenen Bedingungen nicht begutachtet werden. Etwaige wertmindernde Faktoren fließen nicht in diese Beurteilung hinein.



Figure 1: Diagonal front (left)



Figure 2: Diagonal front (right)



Figure 3: Diagonal rear (left)



Figure 4: Diagonal rear (right)



Figure 5: Interior - front



Figure 6: Interior - rear



Figure 7: Instrument cluster



Figure 8: Instrument panel



Figure 9: Interior 360° view



Figure 10: Cargo area



Figure 11: VIN



Figure 12: Mounted tyres

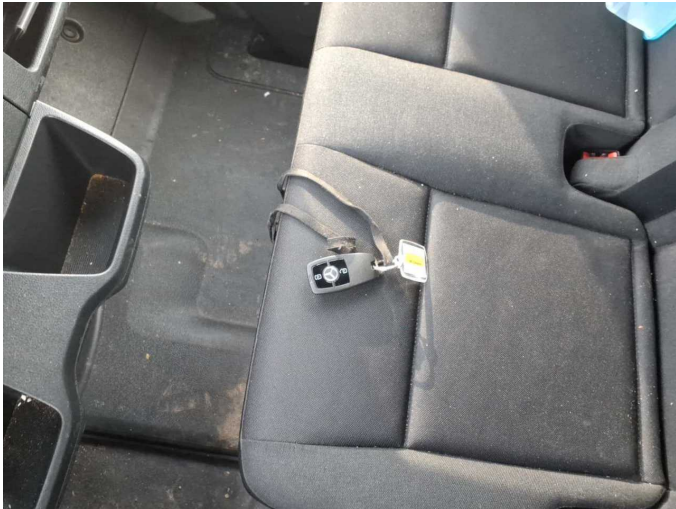


Figure 13: Documents



Figure 14: Documents



Figure 15: Misc.



Figure 16: Misc.

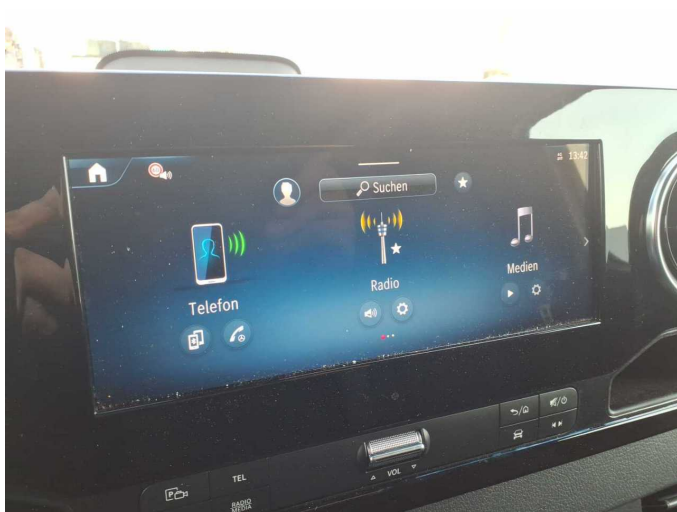


Figure 17: Misc.



Figure 18: Misc.



Figure 19: Misc.



Figure 20: Misc.

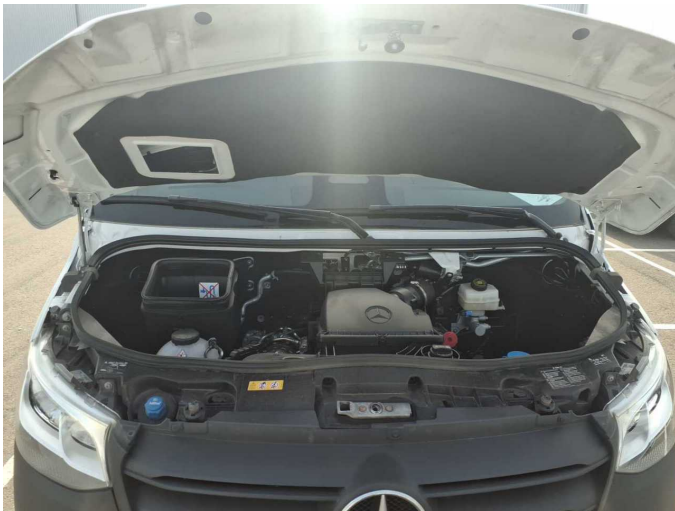


Figure 21: Misc.

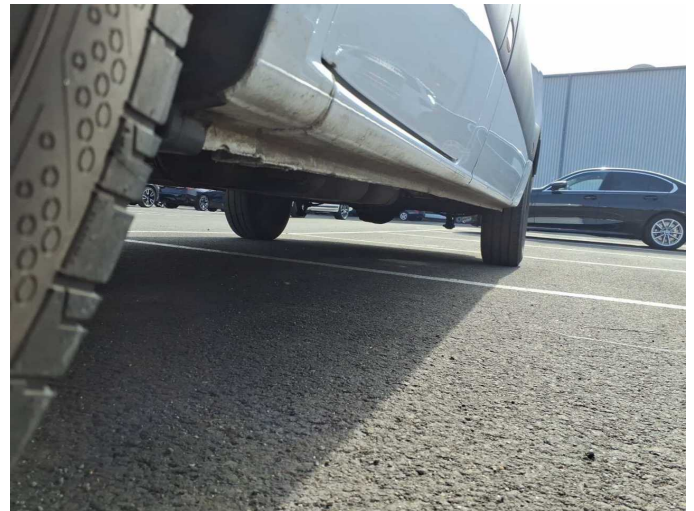


Figure 22: Misc.



Figure 23: Misc.



Figure 24: Misc.



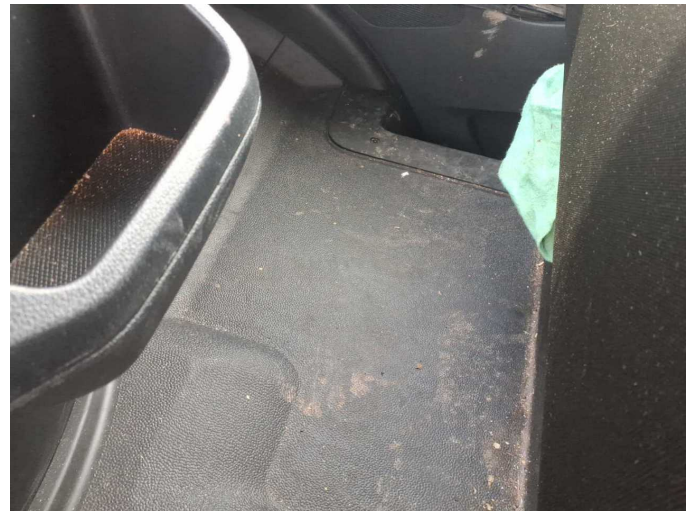
Figure 25: Misc.



Damage 1: Interior: Interior - Soiled - Clean



Damage 1: Interior: Interior - Soiled - Clean



Damage 1: Interior: Interior - Soiled - Clean



Damage 1: Interior: Interior - Soiled - Clean



Damage 1: Interior: Interior - Soiled - Clean



Damage 2: Rear bumper: Parking sensors - left side (Außen, inkl. Halter)
- Missing - Replace



Damage 2: Rear bumper: Parking sensors - left side (Außen, inkl. Halter)
- Missing - Replace



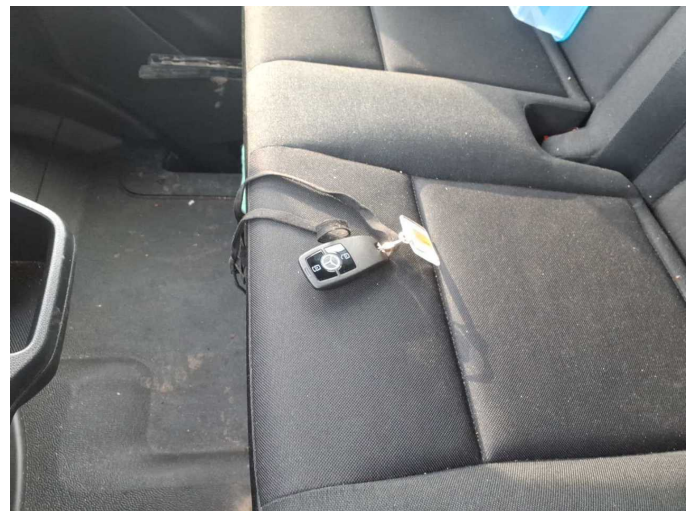
Damage 2: Rear bumper: Parking sensors - left side (Außen, inkl. Halter)
- Missing - Replace



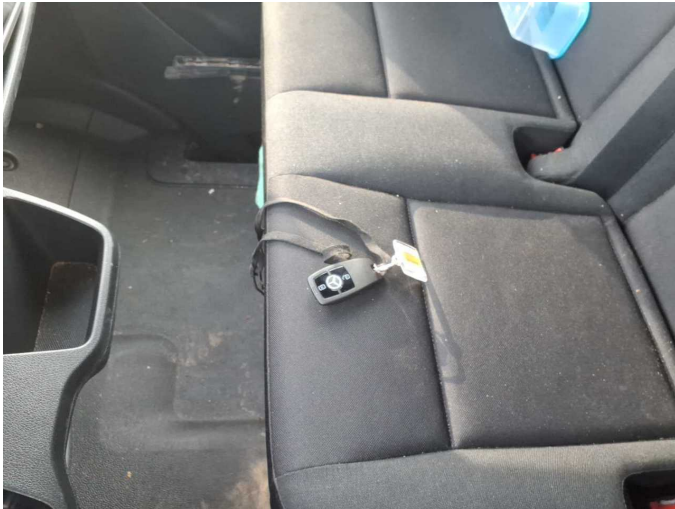
Damage 3: Rear of vehicle: Foot plate (Kunststoffbauteil) - Scratched -
Loss in value



Damage 3: Rear of vehicle: Foot plate (Kunststoffbauteil) - Scratched -
Loss in value



Missing part 1: Documents: Log book - Missing - Replace



Missing part 2: Equipment: Vehicle key - Missing - Replace