

## Expertise

Protocol number: 46259283  
Order No. / Reference: 26573224  
Inspection date: 1 Jul 2026

Manufacturer: Mercedes-Benz

Model: C 220 d T 9G-TRONIC AMG Line

VIN: W1KAH0EB2PF111508



### Vehicle details

#### Manufacturer / Type / Model / Equipment

Mercedes-Benz C 220 d T 9G-TRONIC AMG Line

**Vehicle Identification number** W1KAH0EB2PF111508

**Mileage (Read)** 78,197 km

**First registration** 23 May 2023

**Number of holders** 1

**Next periodical technical inspection** 05/2026

(Report not on hand)

**Power / Engine displacement** 147 kw / 1,993 ccm

**Fuel type / Cylinder** Hybrid Diesel / E / 4

**Gearbox / Number of gears** Automatic / 9

**Type of drive** Rear drive

**Type of vehicle** Station wagon

**Colour / colour code** Sodalithblau Metallic

**Doors / Seats** 5 / 5

**Upholstery type** Cloth / leather combination

**Colour of upholstery** Black-Anthracite

**Re-import** no

**readiness to drive** Roadworthy



## Vehicle details

<b>Maintenance booklet / proof</b>	digital proof / complete	<b>Next maintenance in</b>	214 Tag(e)
<b>Last service on / at</b>	12/2025 at 69,822 km		
<b>Key is / should be</b>	2 / 2	<b>FZG documents</b>	ZB#2 (B) was available (copy), ZB#1 (S) was not available.
		<b>Letter No.</b>	GS720408
<b>Previous damage / Accident</b>	Detectable	<b>Repainting</b>	None detectable
<b>Inspection conditions</b>	sufficient	<b>Lifting equipment / pit</b>	yes
<b>Test drive</b>	Not performed	<b>Engine function test</b>	Performed
<b>readiness to drive</b>	Roadworthy		
<b>Manufacturer key number/ type code number</b>	2222 / AYH 00335		
<b>Emission standard</b>	EURO6;WLTP;AP;PI/CI; M, N1 I	<b>fine dust sticker</b>	
<b>Permitted total weight</b>	2,400 kg	<b>Empty weight</b>	

## Tyres

### Mounted tyres

#	Tyre size	Type of tyre	Manufacturer	Tread depth
1)	225/45 R18 95Y	Summer tyres on Light alloy	Pirelli	4mm / 4mm
2)	245/40 R18 97Y	Summer tyres on Light alloy	Pirelli	4mm / 4mm

### Additional tyres

#	Tyre size	Type of tyre	Manufacturer	Tread depth
1)	225/45 R18 95H	Winter tyres on Light alloy	Goodyear	5mm / 5mm
2)	225/45 R18 95H	Winter tyres on Light alloy	Goodyear	5mm / 5mm

**Legend: Tread depth information for the left tire is listed first, for the right tire it is listed second on the axle in the direction of travel.**



## Equipment

### Standard equipment

- Airbag for driver and front passenger
- Airbag: Center airbag
- Airbag: Windowbag for driver and front passenger
- AMG floor mats
- Left and right exterior mirrors are heated and electrically adjustable
- Brake system with larger brake discs on the front axle
- black roof rails
- Double cup holder at the front
- EASY-PACK tailgate
- Electronic Stability Program (ESP)
- Electric windows (4-way)
- Transmission: 9-speed automatic, 9G-TRONIC
- Heated rear window
- Instrument panel and door sills in ARTICO man-made leather in black nappa look
- Mechanical child safety lock for the rear doors
- Front headrests
- Cargo area cover including EASY-PACK safety net
- Steering wheel: Multifunction sports steering wheel in Nappa leather
- Package: Interior lighting package
- Radio: Extended MBUX functions
- Radio accessories: Digital radio (DAB)
- Radio accessories: Central display
- Tire pressure monitoring system (TPMS)
- Wheels: 45.7 cm (18") AMG light-alloy wheels in a 5-spoke design
- Lane Keeping Assist, active
- High-visibility vest for drivers
- Central locking with remote control
- Airbag: Automatic passenger airbag deactivation
- Airbag: Side airbag for driver and front passenger
- Ambient lighting with 64 light colors
- AMG sports pedal assembly made of brushed stainless steel with rubber studs
- Basic services
- Brake assist, active
- Diesel particulate filter
- DYNAMIC SELECT
- ECO start/stop function
- Chassis: Sport chassis with sport direct steering
- Speed Limit Assistant
- rear window wiper
- Interior headliner fabric crystal grey
- ISOFIX child seat attachment with top tether in the rear
- KEYLESS-GO start function
- Rear headrests (3)
- Paint finish: Solid
- LED High Performance Headlights
- Mercedes-Benz emergency call system
- Package: Storage
- Upholstery: ARTICO leatherette/MICROCUT microfiber
- Radio: MBUX
- Radio accessories: Communication module (LTE) for using Mercedes me connect services
- Remote Services Plus
- Windscreen wipers with rain sensor
- Seats: Rear seat backrests foldable
- Cruise control
- Electronic immobilizer



## Extra equipment

- Trailer maneuvering assistant
- Illuminated entry sills with Mercedes-Benz lettering
- Chassis: Chassis with adaptive damping adjustment
- Fingerprint scanner (color-illuminated fingerprint scanner in the control bar below the OLED media display - two fingerprints can be stored per user - faster access replaces PIN entry - protects personal data such as profiles as well as office and payment functions)
- Head-up display
- High-end business package
- KEYLESS-GO (access and driving authorization system)
- THERMOTRONIC automatic climate control with 4 climate zones (controlled via the central display or the climate control unit in the center console, with Auto button for automatic control of temperature, air volume and air distribution - control unit on the back of the center console - automatic recirculation when a tunnel is detected via GPS, only in conjunction with navigation system - sensors for detecting e.g. inside/outside temperature - fine dust activated carbon filter - ventilation system - dew point sensors - residual heat function for efficient use of engine waste heat)
- Package: ENERGIZING Plus (ENERGIZING Plus comfort programs: warmth, joy, coziness, freshness, vitality, training - ENERGIZING COACH with individual program recommendations through evaluation of driving and vehicle data as well as driver data if required - Multicontour seats for driver and front passenger - Electro-pneumatic 4-way lumbar support - Seat climate control for driver and front passenger - Seat heating - AIR-BALANCE program for fragrance, ionization and purification of the air, active in all ENERGIZING programs - Ambient lighting with program-specific lighting moods)
- Package: High-End Infotainment Package (MBUX Navigation Premium (hard drive navigation, pre-installation for Live Traffic Information), Traffic Sign Assist, Smartphone Integration (connects the mobile phone wirelessly to the multimedia system via Apple CarPlay and Android Auto), Wireless charging system for mobile devices in the front, Driver display - 31.2 cm (12.3") color LCD display, Central display - 30.2 cm (11.9") touch display, MBUX Augmented Reality for navigation.)
- Package: High-End Light Package (DIGITAL LIGHT with projection function: -HD system with projection module -DIGITAL LIGHT projection functions: projection function for lines, symbols, animations -ULTRA RANGE high beam with a range of more than 600 m -Topography compensation -Curving light with roundabout and intersection function -Active curve light with predictive control -Extended fog light, city light, country road light, motorway light, motorway high beam and bad weather light)
- Package: Mirror package (both exterior mirrors electrically folding (button in the driver's door control panel) - interior mirror and exterior mirror on the driver's side automatically dimming continuously - ambient lighting of the exterior mirror to illuminate the entry area with projection of the Mercedes-Benz logo)
- Towbar with ESP trailer stabilization
- ENERGIZING AIR CONTROL (Air quality sensor and one fine dust sensor each for indoor and outdoor use - Fine dust filtration with 2 filters - Activated carbon-based indoor air filter with filter layers against fine dust (PM2.5) and nitrogen oxides (NOx) or sulfur dioxides (SO2) as well as pollen - Automatic recirculation or fresh air switching depending on the measured air quality, taking into account the overall climate comfort control system - Air quality menu in the MBUX multimedia system to illustrate the measured values)
- Fuel tank with larger capacity
- Paint finish: Metallic
- Steering wheel: Steering wheel heating
- Steering: Rear-axle steering (At speeds below 60 km/h, the rear wheels steer in the opposite direction to the front wheels – when parking, by up to 2.5° against the front axle angle. Above speeds above 60 km/h, the rear wheels steer up to 2.5° in the same direction as the front wheels.)
- Center console diamond pattern silver grey
- Package: Advanced Parking Package (12 ultrasonic sensors - 360° camera - Active Parking Assist with PARKTRONIC: detects free parking spaces, assisted parking, visual and acoustic warning, display of camera and ultrasonic data in the media display - Cross traffic warning: can provide visual and acoustic warnings when reversing out of a parking space and, if necessary, automatically initiate emergency braking - Reverse maneuvering brake: can trigger a braking process - Drive-away assist)
- Package: Driving Assistance Package Plus (Active Distance Assist DISTRONIC, Active Speed Limit Assist, Extended Automatic Restart on Highways, Route-Based Speed Adaptation with Traffic Jam End Function, Active Traffic Jam Assist, Active Steering Assist, Active Lane Change Assist, Active Emergency Stop Assist, Emergency Lane Function, Active Brake Assist with Vehicle, Bicycle and Pedestrian Detection; Intersection Function, Turn Function, Traffic Jam End Emergency Braking Function, Evasive Steering Assist, Active Lane Keeping Assist, Active Blind Spot Assist, PRE-SAFE Impulse Side)
- Package: High-End Comfort Package (Seat heating for driver and front passenger - Memory Package: Driver and front passenger seats, steering column and exterior mirrors electrically adjustable and storable; Seat longitudinal position and headrest height additionally electrically adjustable; 3 memory settings each for driver and front passenger; 4-way lumbar support for driver and front passenger; Seat cushion depth adjustment with gapless cushion; PRE-SAFE positioning function for the front passenger seat)
- Package: Luggage compartment comfort (electrically folding rear seat backrests via switches on the right and left in the control panel in the load compartment - electric opening and closing of the load compartment roller blind - 12V socket on the left in the control panel in the load compartment - reversible mat, with a rubberized, non-slip side and a soft velour side)



- Radio accessories: Burmester 3D surround sound system (15 powerful speakers, with dedicated amplifier channel; DSP amplifier with a total output of 710 W (2 x 120 watts, 7 x 50 watts, 6 x 20 watts); 2 broadband speakers in the front for 3D sound; Frontbass technology with woofers integrated into the body shell; sound optimization for the front, rear, or all seats; 2 sound presets: Pure and 3D Sound; equalizer function; noise compensation; pre-installation for MBUX entertainment)
- Sunroof: Electric panoramic sunroof
- Seats: Heated rear seats
- Auxiliary heating
- Type designation removed from trunk lid
- Heat and noise insulating acoustic glass (for windshield and front doors)
- Heat-insulating dark tinted glass
- Decorative elements in diamond pattern, silver-grey

### Brief expert findings

Documents submitted	At the time of the inspection, the vehicle registration certificate Part 2 (title) was available, but the vehicle registration certificate Part 1 (document) was not. (Copy)
VIN comparison	The vehicle identification number (VIN) was read from the vehicle and its conformity with the submitted documents was confirmed by the undersigned during the inspection.
Inspection	The inspection conditions were sufficient for the assessment of the vehicle. Lifting equipment and/or a pit were available for examining the vehicle.
Test drive	No test drive/shunting maneuver was carried out during the inspection of the vehicle.
Engine function test	An engine test run was performed.
readiness to drive	The vehicle was roadworthy at the time of inspection.

### Value reducing factors

No.	Component group	Description
1	Door - front left side	Door - Scratch(es) - Smart repair
2	Steering system	Steering wheel - Scratched - Smart repair
3	Misc.	Main inspection - Due - Perform
4	Vehicle glazing	Windscreen - Stone chips - Smart repair
5	Wheel / tyres	Tyre - front right side - Damaged - Replace
6	Door - rear right side	Door - Scratch(es) - Paint
7	Front bumper	Front bumper - Scratched - Paint
8	Wheel / tyres	Alloy rim - front right side - Scratched - Replace

### Wear and tear

No.	Component group	Description
1	Bonnet	Bonnet - Stone chips - No deduction
2	Body	Underbody panelling - Scratch(es) - No deduction

The vehicle shows signs of wear and tear commensurate with its age and use.

### Previous damages

No.	Previous damage	Extent of damage (Net)
1	Rear, Provided by user / customer, from 9 Aug 2025	1.670,47 €



## Order/Scope of Order

An order was placed to prepare a sales report for the described vehicle. This report includes the following:

- Description of key vehicle information
- Documentation of equipment features  
*(Delivery by third-party service providers)*
- Documentation of damage, defects, missing parts
- Documentation of prior damage, unrepaired prior damage, repainting
- A brief visual or functional inspection of the equipment details, if possible.  
*(Functional testing of driver assistance systems is not included in the scope of services!)*
- a photographic documentation of the vehicle

## Basis for the order

This product is based on the guidelines for vehicle returns and valuations published by Alphabet Fleet GmbH. The expert makes the specific findings in each individual case objectively, within the framework of the prescribed standards, based on their own expertise.

The vehicle inspection takes place in a fully assembled, unassembled state.

Damage or defects that can only be detected during disassembly/diagnostic work or through further investigation remain within the realm of prognostic risk. An increased risk exists due to concealed defects caused by fraudulent misrepresentation and which were not identifiable by the expert.

Damage or defects resulting from normal use or wear and tear of the vehicle will be accepted in accordance with the applicable standard.

There was no explicit identification or monetary consideration of the expected features within the product.

Features which, in their nature and extent, slightly exceed normal use but do not constitute unacceptable damage, will be documented and indicated as signs of wear, if applicable.

Damage or defects that, according to the applicable standard, can no longer be attributed to normal use or wear and tear are listed under "Value Reducing Factors" in the product description.

Depending on the product specification, a monetary ID can be provided. If this takes place, the costs can be 100% d or pro rata depending on the vehicle's age and mileage.

## Previous damages

According to available information previous damages were repaired at the vehicle. Traces of repairs, which allow conclusions about the area of repair, were not recognizable during the inspection.

## Comments

- Wartungshistorie gemäß Auftraggeber Informationen.

ALPHABET



Figure 1: Diagonal front (left)

ALPHABET



Figure 2: Diagonal front (right)

ALPHABET



Figure 3: Diagonal rear (left)

ALPHABET



Figure 4: Diagonal rear (right)



Figure 5: Interior - front



Figure 6: Instrument cluster



Figure 7: Instrument panel



Figure 8: Interior 360° view



Figure 9: Cargo area

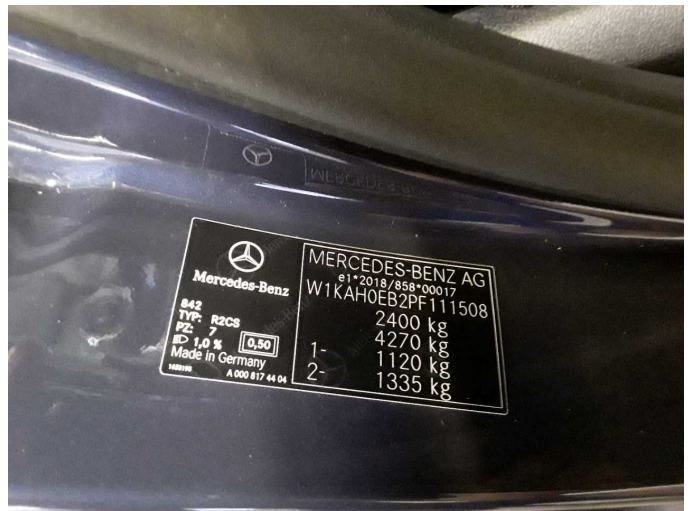


Figure 10: VIN



Figure 11: Mounted tyres



Figure 12: Documents



Figure 13: Additional tyres



Figure 14: Navigation

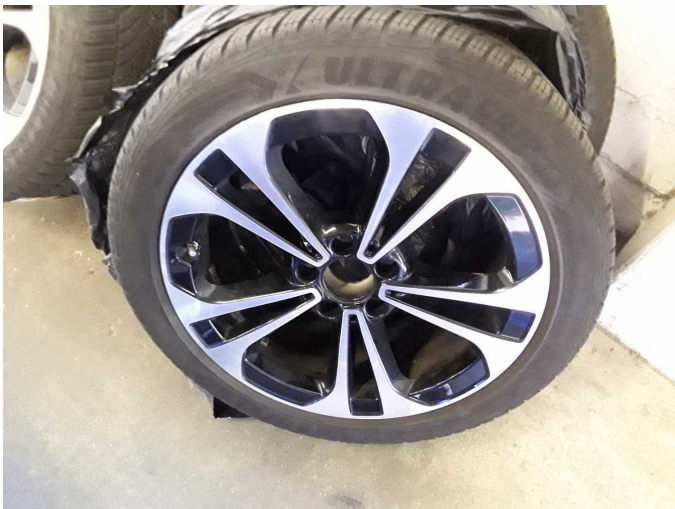


Figure 15: Misc.



Figure 16: Misc.



Figure 17: Misc.



Figure 18: Misc.



Figure 19: Misc.



Figure 20: Misc.

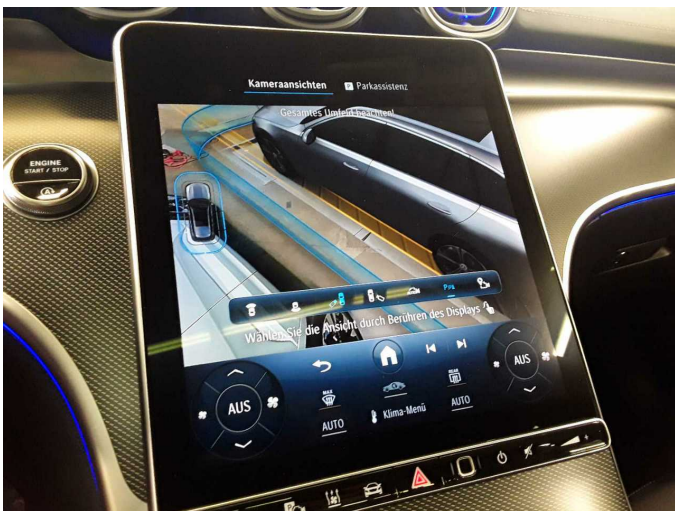


Figure 21: Misc.



Figure 22: Misc.



Figure 23: Misc.



Figure 24: Misc.



Figure 25: Misc.



Figure 26: Misc.



Figure 27: Misc.



Figure 28: Misc.



Figure 29: Misc.

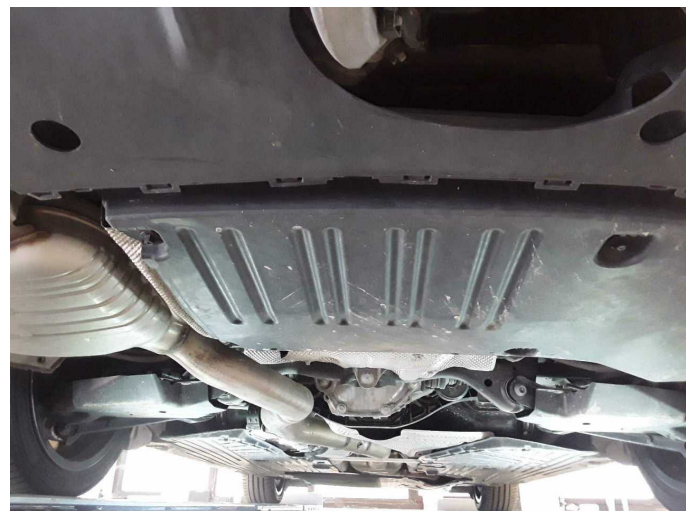


Figure 30: Misc.



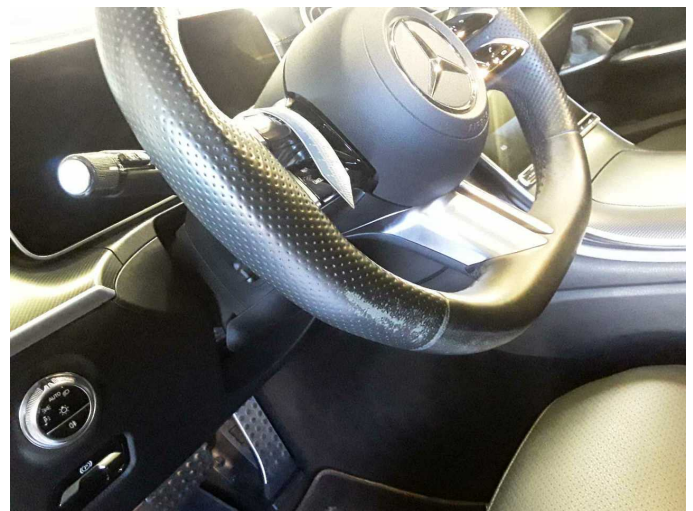
**Damage 1:** Door - front left side: Door - Scratch(es) - Smart repair



**Damage 1:** Door - front left side: Door - Scratch(es) - Smart repair



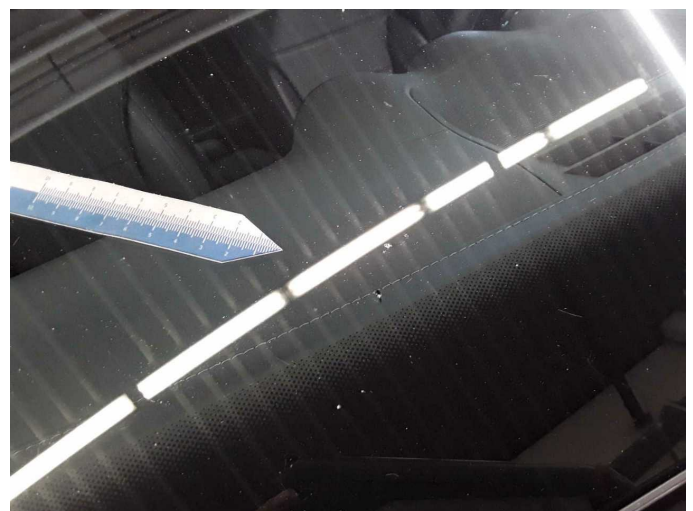
**Damage 2:** Steering system: Steering wheel - Scratched - Smart repair



**Damage 2:** Steering system: Steering wheel - Scratched - Smart repair



**Damage 4:** Vehicle glazing: Windscreen - Stone chips - Smart repair



**Damage 4:** Vehicle glazing: Windscreen - Stone chips - Smart repair



**Damage 5:** Wheel / tyres: Tyre - front right side - Damaged - Replace



**Damage 5:** Wheel / tyres: Tyre - front right side - Damaged - Replace



**Damage 6:** Door - rear right side: Door - Scratch(es) - Paint



**Damage 6:** Door - rear right side: Door - Scratch(es) - Paint



**Damage 7:** Front bumper: Front bumper - Scratched - Paint



**Damage 7:** Front bumper: Front bumper - Scratched - Paint



**Damage 7:** Front bumper: Front bumper - Scratched - Paint



**Damage 8:** Wheel / tyres: Alloy rim - front right side - Scratched - Replace



**Damage 8:** Wheel / tyres: Alloy rim - front right side - Scratched - Replace



**Wear and tear 1:** Bonnet: Bonnet - Stone chips - No deduction



# Wartungshistorie

(gemäß Auftraggeber Informationen)

Fahrgestellnummer: W1KAH0EB2PF111508  
Hersteller / Modell: MERCEDES-BENZ MERCEDES-BENZ C 220 d T 9G-TRONIC  
AMG Line

Datum	KM-Stand	Beschreibung
19.02.2026	72.348	Systemtest/Eigendiagnose
18.12.2025	69.822	Bremsscheiben vorne; Regelwartungsdienst
04.09.2025	63.662	Systemtest/Eigendiagnose
03.10.2024	47.706	Regelwartungsdienst
01.03.2024	25.462	Regelwartungsdienst