

Expertise

Protocol number: 46361013
Order No. / Reference: 26712847
Inspection date: 6 Jul 2026

Manufacturer: Mercedes-Benz

Model: C 220 d T 9G-TRONIC

VIN: W1KAH0EB5PF108831



Vehicle details

Manufacturer / Type / Model / Equipment

Mercedes-Benz C 220 d T 9G-TRONIC

Vehicle Identification number W1KAH0EB5PF108831

Mileage (Read) 91,025 km

First registration 3 May 2023

Number of holders 1

Next periodical technical inspection 05/2028

(Report not on hand)

Power / Engine displacement 147 kw / 1,993 ccm

Fuel type / Cylinder Hybrid Diesel / E / 4

Gearbox / Number of gears Automatic / 9

Type of drive Rear drive

Type of vehicle Station wagon

Colour / colour code Schwarz

Doors / Seats 5 / 5

Upholstery type Cloth

Colour of upholstery Black-Grey

Re-import no

readiness to drive Roadworthy



Vehicle details

| | | | |
|--|------------------------------|--------------------------------|--|
| Maintenance booklet / proof | digital proof / complete | Next maintenance in | 66 Tag(e) |
| Last service on / at | 06/2025 at 75,261 km | | |
| Key is / should be | 1 / 2 | FZG documents | ZB#2 (B) was available (copy), ZB#1 (S) was not available. |
| | | Letter No. | GS707426 |
| Previous damage / Accident | None detectable | Repainting | None detectable |
| Inspection conditions | sufficient | Lifting equipment / pit | No |
| Test drive | Not performed | Engine function test | Performed |
| readiness to drive | Roadworthy | | |
| Manufacturer key number/ type code number | 2222 / AYH 00307 | | |
| Emission standard | EURO6;WLTP;AP;PI/CI; M, N1 I | fine dust sticker | |
| Permitted total weight | 2,400 kg | Empty weight | |

Tyres

Mounted tyres

| # | Tyre size | Type of tyre | Manufacturer | Tread depth |
|----|----------------|-----------------------------|--------------|-------------|
| 1) | 205/55 R17 91W | Summer tyres on Light alloy | Pirelli | 6mm / 6mm |
| 2) | 205/55 R17 91W | Summer tyres on Light alloy | Pirelli | 4mm / 4mm |

Additional tyres

| # | Tyre size | Type of tyre | Manufacturer | Tread depth |
|----|----------------|-----------------------------|--------------|-------------|
| 1) | 225/50 R17 98H | Winter tyres on Light alloy | Michelin | 6mm / 6mm |
| 2) | 225/50 R17 98H | Winter tyres on Light alloy | Michelin | 5mm / 5mm |

Legend: Tread depth information for the left tire is listed first, for the right tire it is listed second on the axle in the direction of travel.

TÜV SÜD Auto Partner GmbH
Wiesenring 2
04159 Leipzig

Inspection location
Hartmann Fleet Professionals GmbH
Leerenstraße 25
29683 Bad Fallingbommel



Equipment



Standard equipment

- Airbag for driver and front passenger
- Airbag: Center airbag (Additional airbag for increased front occupant protection in the event of a side impact)
- Airbag: Sidebag for driver and front passenger (combined thorax/pelvisbag)
- Airbag: Windowbag for driver and front passenger
- Left and right exterior mirrors are heated and electrically adjustable
- Brake assist, active
- black roof rails
- Diesel particulate filter
- DYNAMIC SELECT (consisting of driving programs: Comfort, Sport, Eco mode)
- ECO start/stop function
- Chassis: AGILITY CONTROL chassis with selective damping system and lowered suspension
- Front bumper painted in body color (with centrally positioned trim panel (wing) in silver and diamond-patterned air intakes in black grained)
- Transmission: 9-speed automatic, 9G-TRONIC
- Rear bumper with diffuser-look insert, black grained (rear bumper painted in body color with diffuser-look insert, black grained and invisibly integrated exhaust tailpipes)
- KEYLESS-GO start function
- THERMATIC automatic climate control with 1 climate zone (controlled via the central display or the climate control unit in the center console) - Sensor system for detecting, for example, interior/ exterior temperature, solar radiation, humidity and dew point - Ventilation system consisting of: 3 center vents in the center area and 2 side vents, 2 ventilation openings each in the footwell for driver and front passenger - Fine dust filter for filtering dust, soot and pollen - Dew point sensor, continuous defroster vent under the windshield and 2 fixed defroster vents)
- Steering wheel: Multifunction sports steering wheel in leather (sporty steering wheel in 3-spoke design - leather finish - black grained shift paddles - control via touch panels: left: driver display, cruise control and limiter or active distance assist DISTRONIC; right: MBUX multimedia system (e.g. audio volume and track selection, telephony and navigation), touch sensitivity adjustable via central display)
- Center console in high-gloss black
- Package: Storage (storage compartment with net on the left in the load compartment - double cup holder in the center console for 2 x 750 ml - elastic tension strap on the right in the load compartment - folding box under the load floor - 1 additional bag hook on the right in the load compartment - recess including storage tray on the right in the load compartment - map pockets on the backs of the front seats - reversible mat in the boot floor)
- Upholstery: Fabric Tandel
- Airbag: Automatic passenger airbag deactivation (The system automatically deactivates the passenger airbag as soon as it detects a rear-facing child seat or registers that the passenger seat is unoccupied. A transponder in the child seat is not necessary. If it detects that an adult is taking the seat, the airbag is automatically activated, reducing the risk of incorrect operation.)
- Basic services (breakdown management, maintenance management, accident management, telediagnosis, remote vehicle diagnostics)
- Double cup holder at the front
- EASY-PACK tailgate (with electric operation for opening and closing)
- Electronic Stability Program (ESP) (including Anti-lock Braking System (ABS) and Traction Control System (ASR))
- Electric windows (4-way)
- Velour floor mats
- Speed Limit Assistant (The Speed Limit Assistant detects and displays speed limits.)
- rear window wiper
- Heated rear window
- Interior headliner fabric crystal grey
- ISOFIX child seat attachment with top tether in the rear
- Mechanical child safety lock for the rear doors
- Rear headrests (3)
- Front headrests
- Paint finish: Solid
- Cargo area cover including EASY-PACK safety net
- LED High Performance headlights (The elements of the LED High Performance headlights: - Torch and trifunctional light guide for daytime running lights, position lights and turn signals - Multi-chamber reflector system with 4 individual reflectors each) for low beam and high beam. The elements of the rear lights in LED technology: - All light functions in full LED technology - Tail light - Brake light and parking light - Rear fog light (only on the left side) - Turn signals - Reversing light - 3rd brake light)
- Mercedes-Benz Emergency Call System (can provide a crucial time advantage in an emergency. A communication module with its own SIM card automatically triggers an emergency call upon detection of an accident, which can shorten the time until emergency services arrive. The emergency call can also be triggered manually to organize assistance.)
- Package: Interior lighting package (Illuminated glove compartment - Lighting for wireless mobile interface or mobile phone storage - Lighting for the storage compartment in the center console or the double cupholders - Lighting for the storage compartment under the center console armrest - Two vanity lights in front - Two reading lights in the overhead control unit - Two reading lights in the interior mirror in conjunction with mirror parking - Two reading lights and interior light function in the rear grab handles - Lighting for the trunk or cargo area)



- Radio: Extended MBUX functions (personalization (profiles) and prediction functions - MBUX voice assistant "LINGUATRONIC" with natural language understanding - activation via Hey Mercedes - learning function of the MBUX voice assistant through connection with a cloud-based online dictionary, Mercedes me connect service free of charge for 3 years from activation - Wi-Fi hotspot - internet radio)
- Radio accessories: Central display (High-resolution central display, slightly inclined towards the driver with a 24 cm (9.5") screen diagonal, with MBUX multimedia system - touch display with LCD technology)
- Tire pressure monitoring system (TPMS)
- Remote Services Plus (Communication module - Mercedes me services: remote vehicle status query, programming of auxiliary heating/ventilation, remote door locking and unlocking, sunroof/windows with remote locking and opening including ventilation remote control, personalization, vehicle location, vehicle tracking, geographic vehicle monitoring, parking service monitoring, finder function (Remote Vehicle Finder), notification when exceeding the driving speed, Send2Car function)
- Lane Keeping Assist, active
- High-visibility vest for drivers
- Central locking with remote control

- Radio: MBUX (fully digital instrument display with 26 cm (10.25") color LCD display and a resolution of 1440 x 540 pixels - Bluetooth telephony / audio - WLAN hotspot)
- Radio accessories: Digital radio (DAB)
- Radio accessory: Communication module (LTE) for using Mercedes me connect services (The communication module with a vehicle-integrated, LTE-enabled SIM card offers you added comfort and safety. It continuously connects you to your vehicle – and the vehicle to infrastructure such as the Mercedes-Benz server or the internet. This allows you to use services such as Mercedes me connect Live Traffic Information.)
- Wheels: 43.2 cm (17") multi-spoke alloy wheels (vanadium silver painted with 205/55 R 17 on 6.5 J x 17 ET 34.5)
- Windscreen wipers with rain sensor
- Power steering
- Seats: Rear seat backrests foldable
- Seats: Front seats mechanically adjustable (lengthwise and height)
- Cruise control
- Electronic immobilizer
- Decorative elements, base foil, instrument panel

Extra equipment

- KEYLESS-GO (access and driving authorization system)
- Package: Driving Assistance (Active Distance Assist DISTRONIC, Active Speed Limit Assist, Extended Automatic Restart on Highways, Route-Based Speed Adaptation with Traffic Jam End Function, Active Traffic Jam Assist, Active Steering Assist, Active Lane Change Assist, Active Emergency Stop Assist, Emergency Lane Function, Active Brake Assist with Vehicle, Bicycle and Pedestrian Detection; Intersection Function, Turn Function, Traffic Jam End Emergency Braking Function, Evasive Steering Assist, Active Lane Keeping Assist, Active Blind Spot Assist, Exit Warning Function)
- Heat and noise insulating acoustic glass (for windshield and front doors)

- Package: Business
- Package: High-End Infotainment Package (MBUX Navigation Premium (hard drive navigation, pre-installation for Live Traffic Information), Traffic Sign Assist, Smartphone Integration (connects the mobile phone wirelessly to the multimedia system via Apple CarPlay and Android Auto), Wireless charging system for mobile devices in the front, Driver display - 31.2 cm (12.3") color LCD display, Central display - 30.2 cm (11.9") touch display, MBUX Augmented Reality for navigation.)
- Radio accessories: Advanced sound system (with 9 speakers and 225 watts system power)
- Heat-insulating dark tinted glass

Brief expert findings

| | |
|----------------------|---|
| Documents submitted | At the time of the inspection, the vehicle registration certificate Part 2 (title) was available, but the vehicle registration certificate Part 1 (document) was not. (Copy) |
| VIN comparison | The vehicle identification number (VIN) was read from the vehicle and its conformity with the submitted documents was confirmed by the undersigned during the inspection. |
| Inspection | The inspection conditions were sufficient for the assessment of the vehicle. No lifting equipment or pit was available for inspecting the vehicle. Therefore, inspection of the vehicle's underside was only possible to a limited extent. |
| Test drive | No test drive/shunting maneuver was carried out during the inspection of the vehicle. |
| Engine function test | An engine test run was performed. |
| readiness to drive | The vehicle was roadworthy at the time of inspection. |



Value reducing factors

| No. | Component group | Description |
|-----|-------------------------|---|
| 1 | Wheel / tyres | Alloy rim - rear right side - Scratch(es) - Loss in value |
| 2 | Door - rear right side | Door - Scratch(es) - Smart repair |
| 3 | Sill - right side | Trim - Scratch(es) - Paint |
| 4 | Door - rear left side | Door - Scratch(es) - Paint |
| 5 | Door - front right side | Door - Scratch(es) - Paint |
| 6 | Rear bumper | Rear bumper - Scratch(es) - Paint |
| 7 | Front bumper | Front bumper - Scratch(es) - Paint |
| 8 | Roof | Roof - Scratch(es) - Paint |
| 9 | Vehicle glazing | Windscreen - Broken / torn - Replace |

Wear and tear

| No. | Component group | Description |
|-----|------------------------------|--|
| 1 | Bonnet | Bonnet - Stone chips - No deduction |
| 2 | Side panel - rear right side | Interior trim - Scratch(es) - No deduction |
| 3 | Misc. | Main inspection - No evidence - No deduction |
| 4 | Side panel - rear left side | Sill - Scratch(es) - No deduction |

The vehicle shows signs of wear and tear commensurate with its age and use.

Missing parts

Description

Equipment - Vehicle key

Order/Scope of Order

An order was placed to prepare a sales report for the described vehicle. This report includes the following:

- Description of key vehicle information
- Documentation of equipment features
(*Delivery by third-party service providers*)
- Documentation of damage, defects, missing parts
- Documentation of prior damage, unrepaired prior damage, repainting
- A brief visual or functional inspection of the equipment details, if possible.
(*Functional testing of driver assistance systems is not included in the scope of services!*)
- a photographic documentation of the vehicle



Basis for the order

This product is based on the guidelines for vehicle returns and valuations published by Alphabet Fleet GmbH. The expert makes the specific findings in each individual case objectively, within the framework of the prescribed standards, based on their own expertise.

The vehicle inspection takes place in a fully assembled, unassembled state.

Damage or defects that can only be detected during disassembly/diagnostic work or through further investigation remain within the realm of prognostic risk. An increased risk exists due to concealed defects caused by fraudulent misrepresentation and which were not identifiable by the expert.

Damage or defects resulting from normal use or wear and tear of the vehicle will be accepted in accordance with the applicable standard.

There was no explicit identification or monetary consideration of the expected features within the product.

Features which, in their nature and extent, slightly exceed normal use but do not constitute unacceptable damage, will be documented and indicated as signs of wear, if applicable.

Damage or defects that, according to the applicable standard, can no longer be attributed to normal use or wear and tear are listed under "Value Reducing Factors" in the product description.

Depending on the product specification, a monetary ID can be provided. If this takes place, the costs can be 100% d or pro rata depending on the vehicle's age and mileage.

Previous damages

No apparent prior damage that had been repaired could be found on the vehicle.

Comments

- Winterradsatz ist kein Bestandteil des Auslieferungsumfangs.



Figure 1: Diagonal front (left)



Figure 2: Diagonal front (right)



Figure 3: Diagonal rear (left)



Figure 4: Diagonal rear (right)



Figure 5: Interior - front



Figure 6: Interior - rear



Figure 7: Instrument cluster



Figure 8: Instrument panel

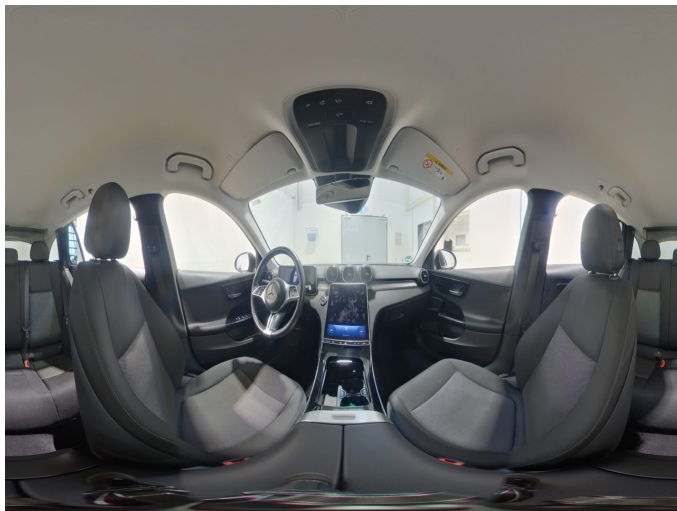


Figure 9: Interior 360° view



Figure 10: Cargo area

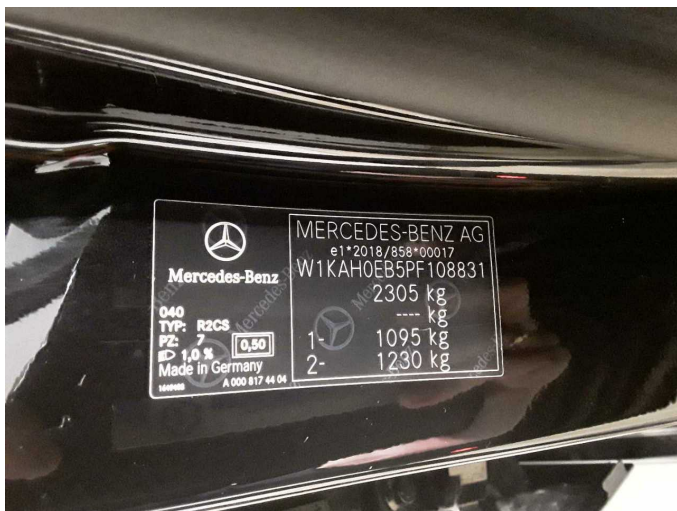


Figure 11: VIN



Figure 12: Mounted tyres

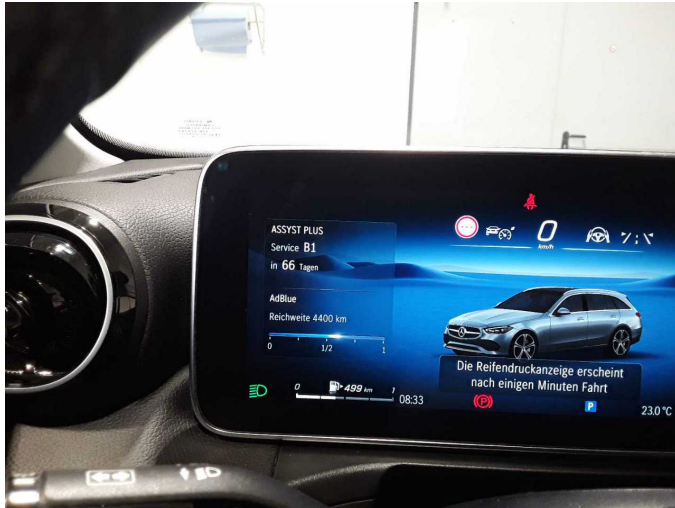


Figure 13: Documents



Figure 14: Documents

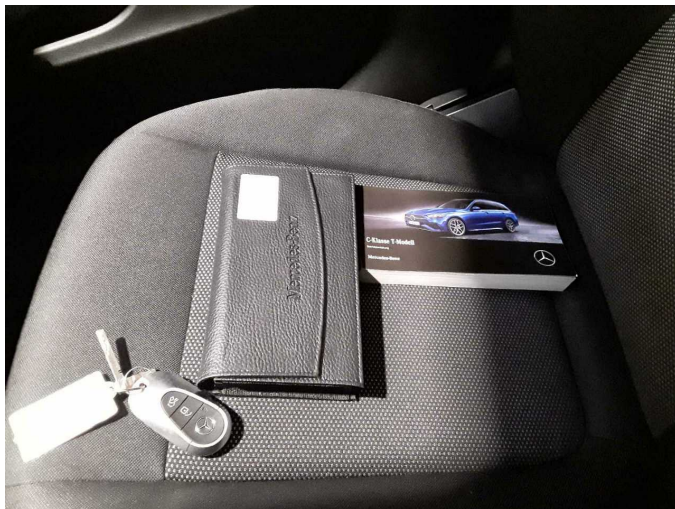


Figure 15: Documents



Figure 16: Additional tyres

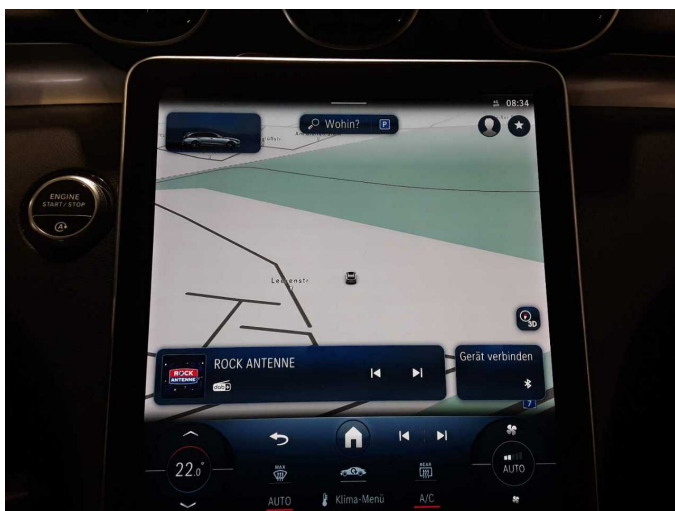


Figure 17: Navigation

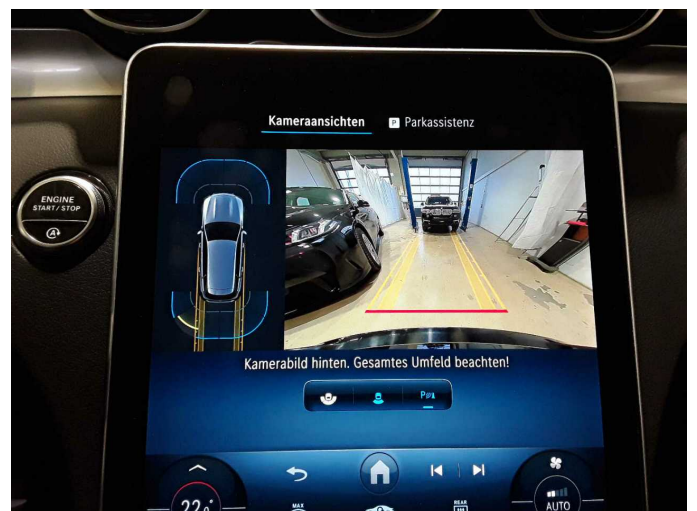


Figure 18: Misc.



Figure 19: Misc.



Figure 20: Misc.

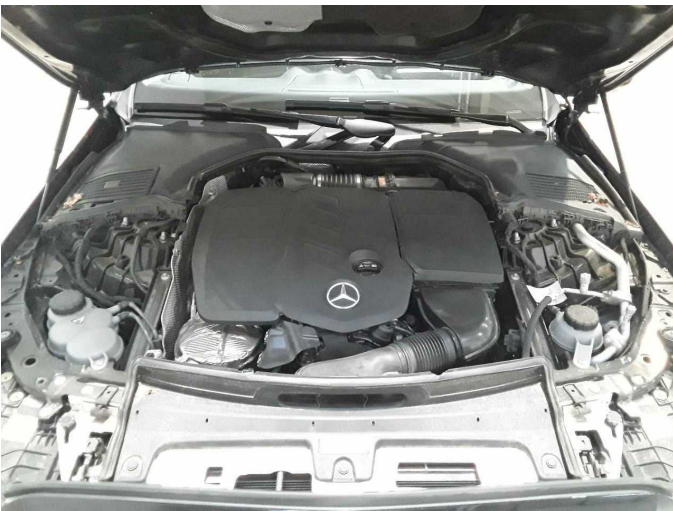


Figure 21: Misc.

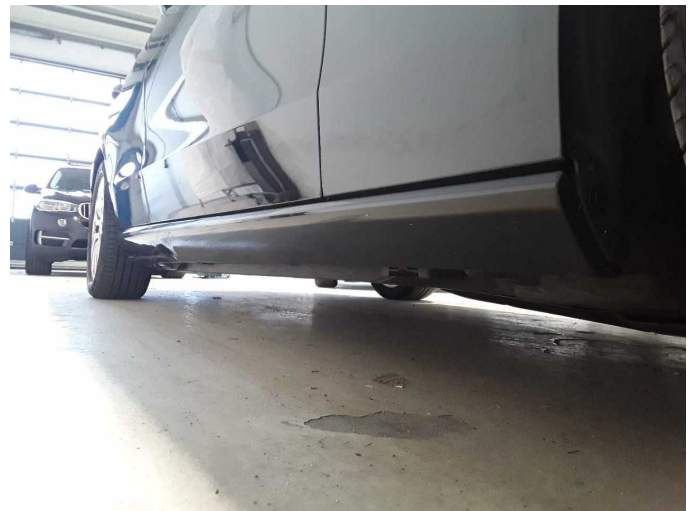


Figure 22: Misc.



Figure 23: Misc.



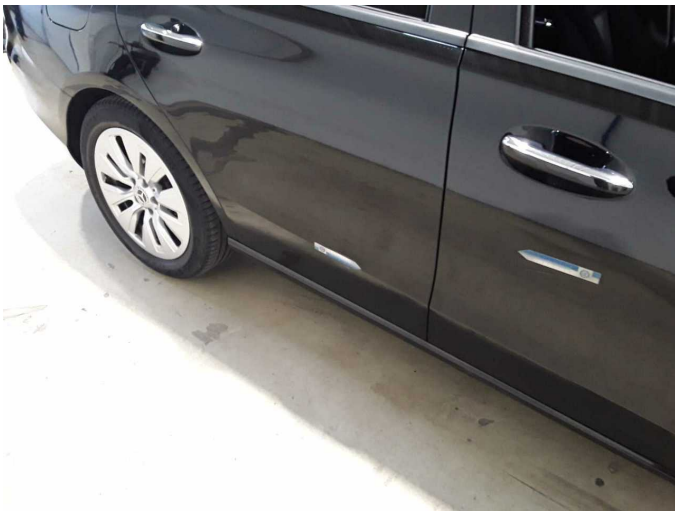
Figure 24: Misc.



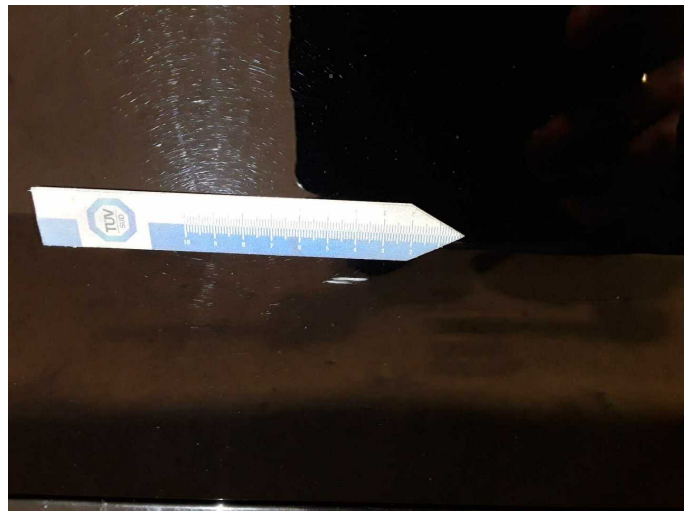
Damage 1: Wheel / tyres: Alloy rim - rear right side - Scratch(es) - Loss in value



Damage 1: Wheel / tyres: Alloy rim - rear right side - Scratch(es) - Loss in value



Damage 2: Door - rear right side: Door - Scratch(es) - Smart repair



Damage 2: Door - rear right side: Door - Scratch(es) - Smart repair



Damage 3: Sill - right side: Trim - Scratch(es) - Paint



Damage 3: Sill - right side: Trim - Scratch(es) - Paint



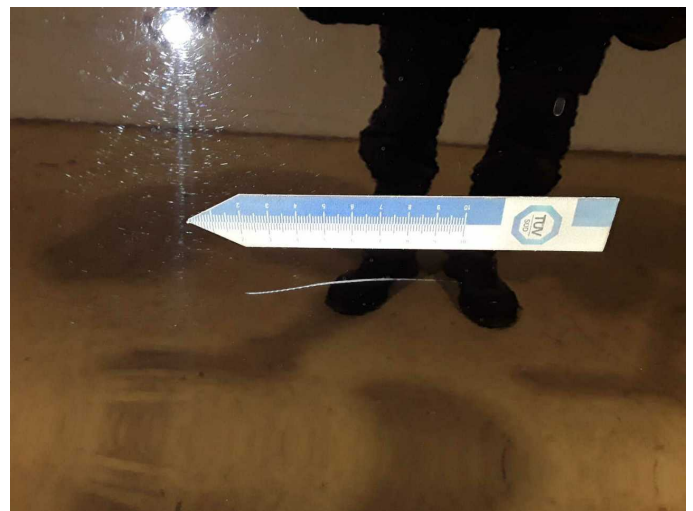
Damage 4: Door - rear left side: Door - Scratch(es) - Paint



Damage 4: Door - rear left side: Door - Scratch(es) - Paint



Damage 5: Door - front right side: Door - Scratch(es) - Paint



Damage 5: Door - front right side: Door - Scratch(es) - Paint



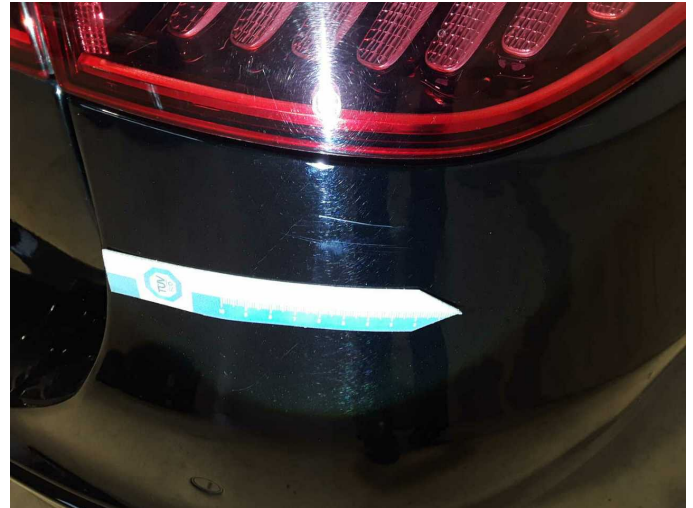
Damage 6: Rear bumper: Rear bumper - Scratch(es) - Paint



Damage 6: Rear bumper: Rear bumper - Scratch(es) - Paint



Damage 6: Rear bumper: Rear bumper - Scratch(es) - Paint



Damage 6: Rear bumper: Rear bumper - Scratch(es) - Paint



Damage 7: Front bumper: Front bumper - Scratch(es) - Paint



Damage 7: Front bumper: Front bumper - Scratch(es) - Paint



Damage 7: Front bumper: Front bumper - Scratch(es) - Paint



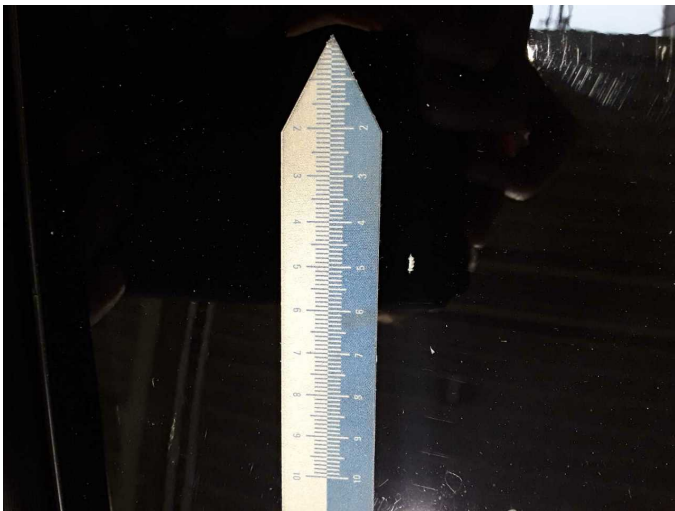
Damage 7: Front bumper: Front bumper - Scratch(es) - Paint



Damage 7: Front bumper: Front bumper - Scratch(es) - Paint



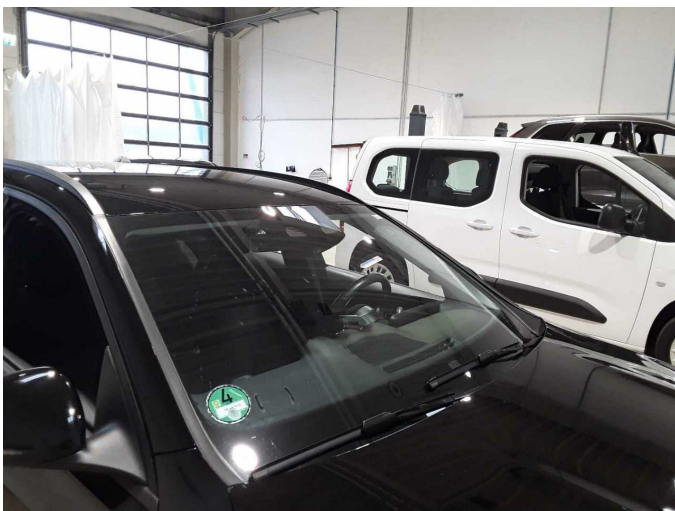
Damage 8: Roof: Roof - Scratch(es) - Paint



Damage 8: Roof: Roof - Scratch(es) - Paint



Damage 8: Roof: Roof - Scratch(es) - Paint



Damage 9: Vehicle glazing: Windscreen - Broken / torn - Replace



Damage 9: Vehicle glazing: Windscreen - Broken / torn - Replace



Wartungshistorie

(gemäß Auftraggeber Informationen)

Fahrgestellnummer: W1KAH0EB5PF108831

Hersteller / Modell: MERCEDES-BENZ MERCEDES-BENZ C 220 d T 9G-TRONIC

| Datum | KM-Stand | Beschreibung |
|------------|----------|---------------------|
| 28.05.2026 | 89.100 | HU + AU |
| 11.06.2025 | 75.261 | Regelwartungsdienst |
| 02.08.2024 | 51.210 | Regelwartungsdienst |
| 14.12.2023 | 26.583 | Regelwartungsdienst |