

Expertise

Protocol number: 46351642
Order No. / Reference: 26521714
Inspection date: 7 Jul 2026

Manufacturer: Skoda

Model: Octavia Combi 2.0 TDI Ambition

VIN: TMBJG7NX4NY051072



Vehicle details

Manufacturer / Type / Model / Equipment

Skoda Octavia Combi 2.0 TDI Ambition

Vehicle Identification number TMBJG7NX4NY051072

Mileage (Read) 113,470 km

First registration 19 Jan 2022

Number of holders 1

Power / Engine displacement 85 kw / 1,968 ccm

Fuel type / Cylinder Diesel / 4

Gearbox / Number of gears Manual / 6

Type of drive Front drive

Type of vehicle Station wagon

Colour / colour code Moon-Weiß Perleffekt

Doors / Seats 5 / 5

Upholstery type Cloth

Colour of upholstery Black-Grey



Vehicle details

Maintenance booklet / proof	digital proof / complete	Next maintenance in	18,600 km
Last service on / at	02/2026 at 110,412 km		
Key is / should be	2 / 2	FZG documents	ZB#2 (B) was available (copy), ZB#1 (S) was not available.
		Letter No.	GG203820
Previous damage / Accident	None detectable	Repainting	None detectable
Inspection conditions	sufficient	Lifting equipment / pit	No
Test drive	Not performed	Engine function test	Performed
Manufacturer key number/ type code number	8004 / AWK 00152		
Emission standard	EURO6;WLTP;AP;PI/CI; M, N1 I	fine dust sticker	
Permitted total weight	1,940 kg	Empty weight	

Tyres

Mounted tyres

#	Tyre size	Type of tyre	Manufacturer	Tread depth
1)	205/60 R16 92H	Winter tyres on Light alloy	Pirelli	6mm / 6mm
2)	205/60 R16 92H	Winter tyres on Light alloy	Pirelli	5mm / 5mm

Additional tyres

#	Tyre size	Type of tyre	Manufacturer	Tread depth
1)	205/60 R16 92V	Summer tyres on Light alloy	Kumho	4mm / 4mm
2)	205/60 R16 92V	Summer tyres on Light alloy	Kumho	4mm / 4mm

Replacement

Typ	Tyre size	Type of tyre	Manufacturer	Tread depth
	Tirefit	Expiration date 09/2025		

Legend: Tread depth information for the left tire is listed first, for the right tire it is listed second on the axle in the direction of travel.



Equipment

Standard equipment

- Storage compartment in the luggage compartment with cargo element
- Airbag, driver's knee airbag
- Airbag, front side airbags
- Traction control (ASR)
- Electrically folding exterior mirrors
- Hill start assist including auto-hold function
- Hydraulic brake assist (HBA)
- Grey headliner
- Diesel particulate filter
- Third brake light
- Electronic transverse differential lock (XDS+)
- Driving light assistant
- Front radar assistant including city emergency braking function and pedestrian and cyclist detection
- Transmission: 6-speed manual transmission
- Green tec: Start/stop system including brake energy recuperation
- Interior mirror automatically dimming
- Electronic child safety lock
- Removable boot cover
- LED fog lights
- LED license plate lights
- Steering wheel: height and reach adjustable
- Manual headlight range adjustment
- Rear center armrest with pass-through option
- Engine drag torque control (MSR)
- Rear parking sensors
- Radio accessories: 2 USB-C ports on the front
- Radio accessories: Digital radio reception DAB+
- Rain sensor
- Tire mobility kit
- Electromechanical power steering
- Seats: Height-adjustable driver and passenger seats
- SKODA Care Connect
- Lane keeping assistant (Lane Assist)
- Phone: SmartLink (MirrorLink, Apple CarPlay, Android Auto)
- Bluetooth hands-free phone system
- Immobiliser
- Storage compartments
- Airbag, driver and passenger
- Airbag, head airbags
- Anti-lock braking system (ABS)
- Electrically adjustable and heated exterior mirrors
- Heated windshield washer nozzles including 5l washer fluid reservoir
- Glasses compartment in the headliner
- Roof rails, black
- Tachometer
- Electronic parking brake
- Electronic Stability Control (ESC)
- Electric windows front and rear, including anti-pinch protection and child safety lock
- Cruise control system
- Tinted windows
- Heated rear window
- Rear window wiper including windshield washer system
- ISOFIX preparations on the front passenger seat and the outer rear seats including top tether anchorage
- Headrests (5) front and rear height adjustable
- LED taillights
- LED headlights with LED daytime running lights
- Steering wheel: Leather steering wheel with multifunction buttons
- Front center armrest, including storage compartment
- Multifunction display in the instrument cluster
- Upholstery: Cloth
- Radio accessories: 8 speakers
- Radio accessories: Voice control
- Tire pressure monitoring
- Wheels: 16" Twister AERO alloy wheels
- Seat belts
- Seats: Rear seat backrest split 60:40, foldable
- Speed limiter
- 12V socket in the trunk
- Phone: Wireless SmartLink for Apple CarPlay
- Lashing eyes in the trunk
- Central locking including remote control integrated into the key and EASY Start

Extra equipment

- Package: Comfort
- Package: Travel (Traveller assistance system: - Traffic sign recognition - Predictive and adaptive cruise control (pACC) - Adaptive lane keeping assist - Capacitive steering wheel with hands-off detection - Adaptive cruise control (ACC) (control range 210 km/h) - Driver fatigue detection - Driving profile selection - Automatically dimming exterior mirror (driver's side))
- Front and rear parking sensors
- Heated windscreen
- Package: Infotainment package Columbus (Combi)
- Package: Lights (cornering lights in the fog lights - headlight cleaning system - high beam assist - LED ambient lighting)
- Paint finish: Pearl effect



Brief expert findings

Documents submitted	At the time of the inspection, the vehicle registration certificate Part 2 (title) was available, but the vehicle registration certificate Part 1 (document) was not. (Copy)
VIN comparison	The vehicle identification number (VIN) was read from the vehicle and its conformity with the submitted documents was confirmed by the undersigned during the inspection.
Inspection	The inspection conditions were sufficient for the assessment of the vehicle. No lifting equipment or pit was available for inspecting the vehicle. Therefore, inspection of the vehicle's underside was only possible to a limited extent.
Test drive	No test drive/shunting maneuver was carried out during the inspection of the vehicle.
Engine function test	An engine test run was performed.

Value reducing factors

No.	Component group	Description
1	Trim / covers	Floor mats - Broken / torn - Replace
2	Equipment	Tirefit filler - Expired - Replace
3	Door - front left side	Door - dent(s) - Smart repair
4	Trim / covers	Carpet - front left side - Broken / torn - Smart repair
5	Vehicle glazing	Windscreen with lane departure assistant - Broken / torn - Replace

Order/Scope of Order

An order was placed to prepare a sales report for the described vehicle. This report includes the following:

- Description of key vehicle information
- Documentation of equipment features
(*Delivery by third-party service providers*)
- Documentation of damage, defects, missing parts
- Documentation of prior damage, unrepaired prior damage, repainting
- A brief visual or functional inspection of the equipment details, if possible.
(*Functional testing of driver assistance systems is not included in the scope of services!*)
- a photographic documentation of the vehicle

Basis for the order

This product is based on the guidelines for vehicle returns and valuations published by Alphabet Fleet GmbH. The expert makes the specific findings in each individual case objectively, within the framework of the prescribed standards, based on their own expertise.

The vehicle inspection takes place in a fully assembled, unassembled state.

Damage or defects that can only be detected during disassembly/diagnostic work or through further investigation remain within the realm of prognostic risk. An increased risk exists due to concealed defects caused by fraudulent misrepresentation and which were not identifiable by the expert.

Damage or defects resulting from normal use or wear and tear of the vehicle will be accepted in accordance with the applicable standard.

There was no explicit identification or monetary consideration of the expected features within the product.

Features which, in their nature and extent, slightly exceed normal use but do not constitute unacceptable damage, will be documented and indicated as signs of wear, if applicable.

Damage or defects that, according to the applicable standard, can no longer be attributed to normal use or wear and tear are listed under "Value Reducing Factors" in the product description.

Depending on the product specification, a monetary ID can be provided. If this takes place, the costs can be 100% d or pro rata depending on the vehicle's age and mileage.



Previous damages

No apparent prior damage that had been repaired could be found on the vehicle.

Comments

- Die Unterbodenbesichtigung war nur ebenerdig & eingeschränkt möglich. Mehrkosten möglich.

Der montierte Winterradsatz ist nicht Bestandteil der Ausstattung.



Figure 1: Diagonal front (left)



Figure 2: Diagonal front (right)



Figure 3: Diagonal rear (left)



Figure 4: Diagonal rear (right)

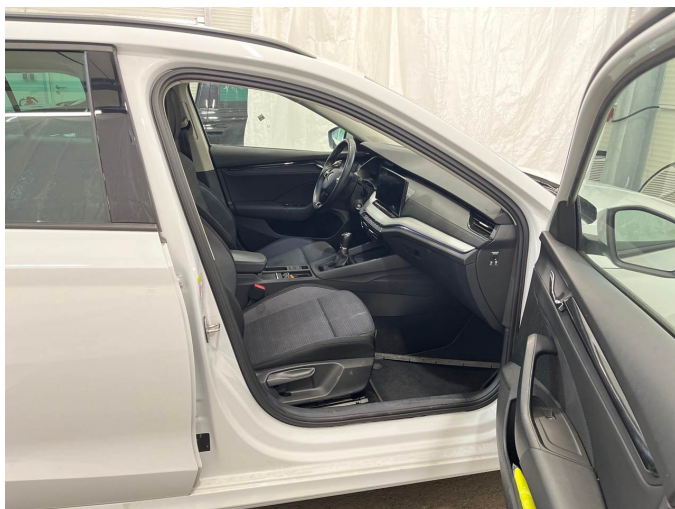


Figure 5: Interior - front



Figure 6: Interior - rear



Figure 7: Instrument cluster



Figure 8: Instrument panel



Figure 9: Interior 360° view



Figure 10: Cargo area

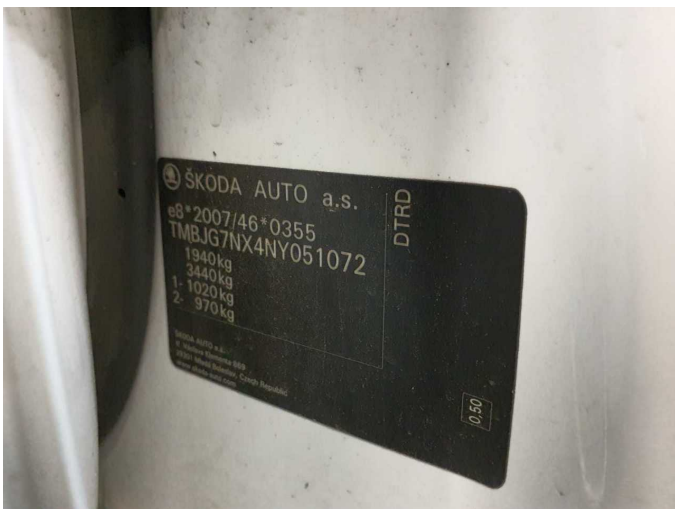


Figure 11: VIN



Figure 12: Mounted tyres

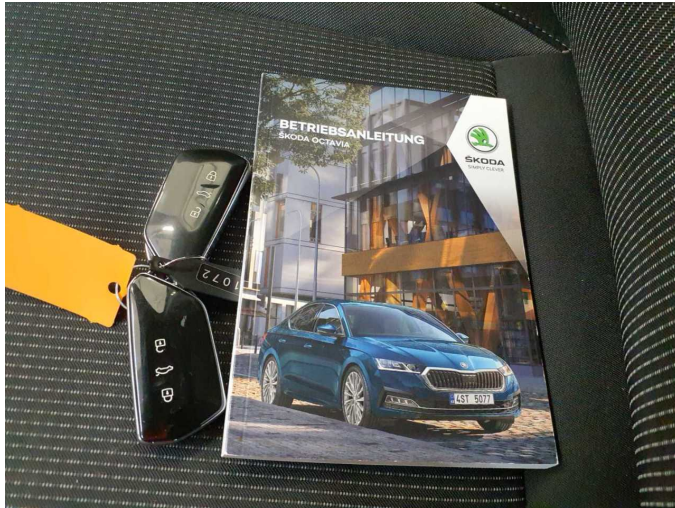


Figure 13: Documents



Figure 14: Documents



Figure 15: Additional tyres



Figure 16: Navigation

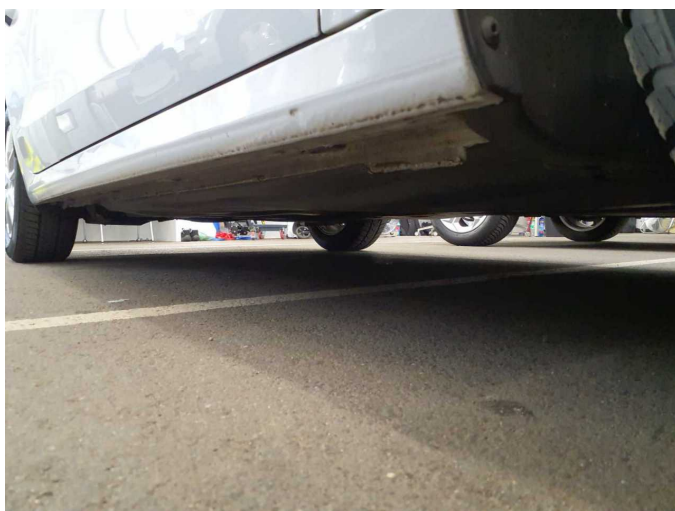


Figure 17: Misc.



Figure 18: Misc.



Figure 19: Misc.



Figure 20: Misc.



Figure 21: Misc.



Figure 22: Misc.



Figure 23: Misc.

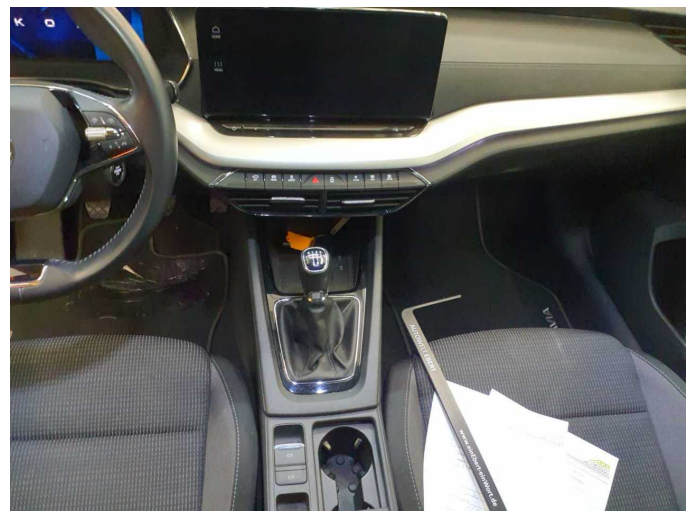


Figure 24: Misc.



Figure 25: Misc.



Figure 26: Misc.

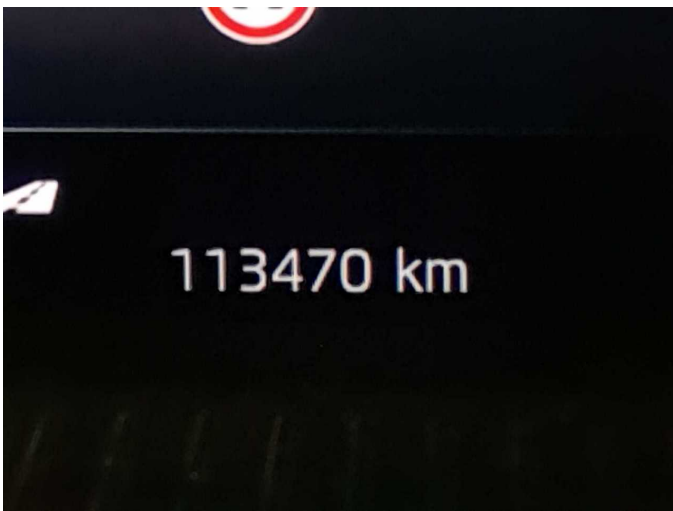


Figure 27: Misc.

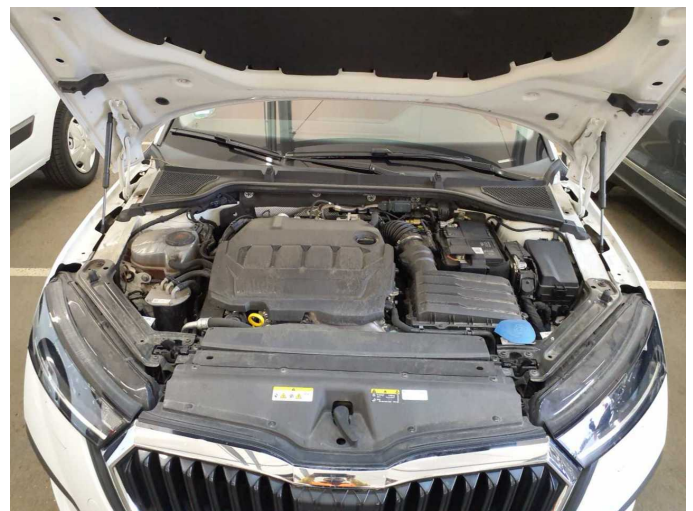


Figure 28: Misc.



Figure 29: Misc.



Figure 30: Misc.



Figure 31: Misc.

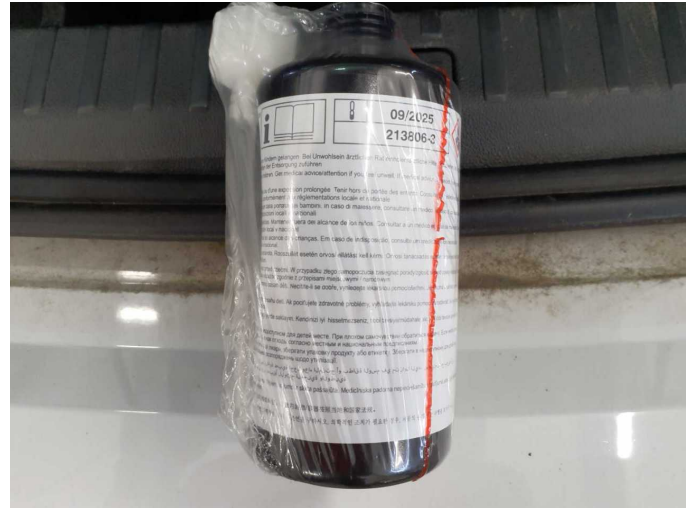
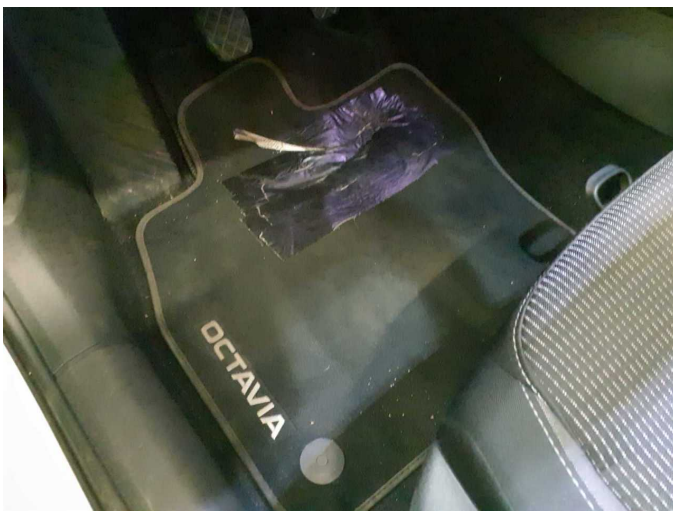


Figure 32: Misc.



Damage 1: Trim / covers: Floor mats - Broken / torn - Replace



Damage 2: Equipment: Tirefit filler - Expired - Replace



Damage 3: Door - front left side: Door - dent(s) - Smart repair



Damage 3: Door - front left side: Door - dent(s) - Smart repair



Damage 4: Trim / covers: Carpet - front left side - Broken / torn - Smart repair



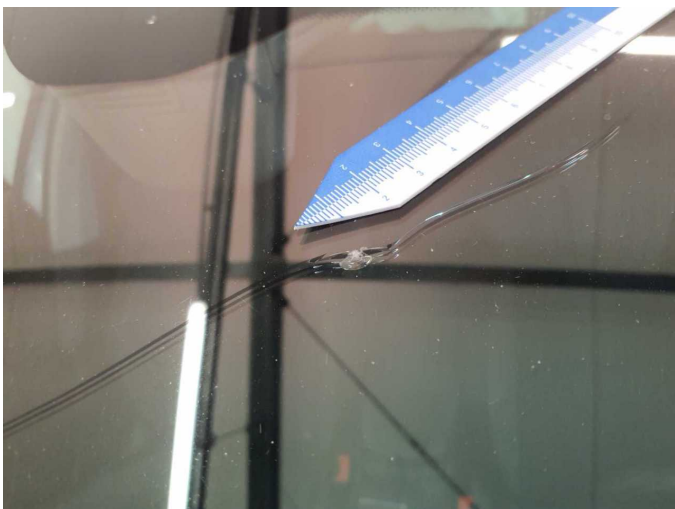
Damage 4: Trim / covers: Carpet - front left side - Broken / torn - Smart repair



Damage 5: Vehicle glazing: Windscreen with lane departure assistant - Broken / torn - Replace



Damage 5: Vehicle glazing: Windscreen with lane departure assistant - Broken / torn - Replace



Damage 5: Vehicle glazing: Windscreen with lane departure assistant - Broken / torn - Replace



Wartungshistorie

(gemäß Auftraggeber Informationen)

Fahrgestellnummer: TMBJG7NX4NY051072

Hersteller / Modell: SKODA SKODA Octavia Combi 2.0 TDI Ambition

Datum	KM-Stand	Beschreibung
18.02.2026	110.412	Bremsflüssigkeit; Bremsflüssigkeit ern; Motoröl b. Wartung; Ölfilter ern; Regelwartungsdienst; Systemtest/Eigendiagnose; Wartung Sonstiges; Wasserpumpe ern
03.01.2025	85.241	AU; Kraftstofffilter ern; Luftfiltereinsatz ern; Motoröl b. Wartung; Ölfilter ern; Regelwartungsdienst; Systemtest/Eigendiagnose; Wartung Sonstiges
28.12.2023	58.027	Bremse Sonstiges; Bremsflüssigkeit; Bremsflüssigkeit ern; Bremsklötze hinten; Bremsklötze vorne; Bremsscheiben hinten; Bremsscheiben vorne; Motoröl b. Wartung; Ölfilter ern; Regelwartungsdienst; Wartung Sonstiges
19.01.2023	28.898	Bremsklötze hinten; Bremsklötze vorne; Motoröl b. Wartung; Regelwartungsdienst