

Expertise

Protocol number: 46256513
Order No. / Reference: 26465745
Inspection date: 30 Jun 2026

Manufacturer: Volkswagen

Model: Golf 2.0 TDI SCR DSG Style

VIN: WVVZZZCDZMW107060



Vehicle details

Manufacturer / Type / Model / Equipment

Volkswagen Golf 2.0 TDI SCR DSG Style

Vehicle Identification number WVVZZZCDZMW107060

Mileage (Read) 103,899 km

First registration 20 May 2021

Number of holders 1

Next periodical technical inspection 05/2026
(Report on hand)

Power / Engine displacement 110 kw / 1,968 ccm

Fuel type / Cylinder Diesel / 4

Gearbox / Number of gears Automatic / 7

Type of drive Front drive

Type of vehicle Saloon car

Colour / colour code Deep Black Perleffekt

Doors / Seats 5 / 5

Upholstery type Alcantara / cloth

Colour of upholstery Anthracite



Vehicle details

Maintenance booklet / proof	digital proof / complete	Next maintenance in	333 Tag(e)
Last service on / at	09/2025 at 90,149 km		
Key is / should be	2 / 2	FZG documents	ZB#2 (B) was available (copy), ZB#1 (S) was not available.
		Letter No.	GC237795
Previous damage / Accident	None detectable	Repainting	None detectable
Inspection conditions	sufficient	Lifting equipment / pit	No
Test drive	Not performed	Engine function test	Performed
Manufacturer key number/ type code number	0603 / CNX 00627		
Emission standard	EURO6;WLTP;AP;PI/CI; M, N1 I	fine dust sticker	
Permitted total weight	1,950 kg	Empty weight	

Tyres

Mounted tyres

#	Tyre size	Type of tyre	Manufacturer	Tread depth
1)	225/45 R17 91H	Winter tyres on Light alloy	Continental	5mm / 5mm
2)	225/45 R17 91H	Winter tyres on Light alloy	Continental	4mm / 4mm

Additional tyres

#	Tyre size	Type of tyre	Manufacturer	Tread depth
1)	225/45 R17 91W	Summer tyres on Light alloy	Michelin	5mm / 5mm
2)	225/45 R17 91W	Summer tyres on Light alloy	Michelin	5mm / 5mm

Replacement

Typ	Tyre size	Type of tyre	Manufacturer	Tread depth
	Tirefit	Expiration date 03/2029		

Legend: Tread depth information for the left tire is listed first, for the right tire it is listed second on the axle in the direction of travel.



Equipment

Standard equipment

- 2 USB-C ports on the front
- Turning brake function and evasive steering support
- Airbag: Head airbag system for front and rear passengers including front side airbags
- Adaptive Cruise Control (ACC) "stop & go"
- Exterior mirror housings and door handles in body color
- Vehicle tool kit
- Car2X
- Headliner in Storm Grey
- Diesel particulate filter and SCR catalyst
- Dual-tone signal horn
- Electric auxiliary air heater
- Electronic parking brake including auto-hold function
- Driving assistant "Travel Assist"
- Automatic headlight control, with LED daytime running lights
- Pedestrian protection measures expanded
- Luggage compartment cover
- Rear window heated
- Rear spoiler in car color
- Air conditioning system "Air Care Climatronic"
- Front headrests
- LED light in the front footwell, selectable light color
- LED taillights
- Steering wheel: Multifunction leather steering wheel with paddle shifters
- Illuminated makeup mirrors in the sun visors
- Fatigue detection
- Emergency braking assistant "Front Assist" with pedestrian and cyclist detection
- Tire pressure monitoring system (passive)
- Wheels: Tire Mobility Set
- Bad weather light and cornering light
- Keyless start system without safe locking
- Seat belts: Three-point automatic seat belt for the middle rear seat
- Seat belts: Three-point automatic seat belts at the front with height adjustment and belt tensioner
- Seats: ergoActive seat with 14-way adjustment and memory function on the driver's side
- 12-volt power outlet in the luggage compartment
- Telephone interface with inductive charging function
- Door and side panels foam film and fabric
- First aid kit, warning triangle and high-visibility vest
- Warning tone and light for unfastened seat belts front and rear
- Central locking without safe locking, with remote control and 2 remote folding keys
- 2 USB charging ports on the rear of the center console
- Airbag for driver and front passenger
- 30-color ambient lighting
- App-Connect
- Electrically adjustable exterior mirrors with memory function
- Third brake light
- Chrome strip at the bottom of the side windows
- Decorative inlays "New Brushed Dark Metal"
- Digital Cockpit Pro, multicolor
- Parking assistance
- Electronic differential lock XDS
- Electronic stability program and electromechanical brake booster
- Electric windows, front and rear
- Windscreen made of laminated safety glass, heat and sound insulating
- Transmission: 7-speed DSG
- Rear window wiper with intermittent function
- ISOFIX mounting points
- Rear headrests
- LED reading lights at the front (2) and 2 at the rear
- LED Plus headlights
- Illuminated strip between headlights and door handle recesses
- Dynamic headlight range control
- Front center armrest adjustable in height and length
- Non-smoking version
- Emergency call service
- Radio "Composition"
- Wheels: Alloy wheels (4) "Belmont" 7.5 J x 17
- Rear bench seat undivided, backrest asymmetrically split and foldable with center armrest
- Electromechanical power steering
- Seat belts: Three-point automatic seat belts for the outer rear seats
- Seat covers in fabric, seat center panels in microfleece "ArtVelours"
- Seats: Sport comfort seats in the front
- Start-stop system
- Bumpers in body color
- Textile floor mats front and rear
- Ambient lighting with logo projection
- Prepared for "We Connect" and "We Connect Plus"
- Electronic immobilizer
- Green thermal insulation glazing, sides and rear



Extra equipment

- Electrically adjustable and folding exterior mirrors with memory function (separately heated - driver's side aspherical)
- Package: Light and Sight Package incl. High Beam Control "Light Assist" (High Beam Control "Light Assist" - Automatically Dimming Interior Mirror - Multifunction Camera - Rain Sensor)
- Package: Winter "Premium" (DSG) (Air Care Climatronic air conditioning with active combination filter, rear controls and 3-zone temperature control - leather multifunction steering wheel, heated, with shift paddles - automatically heated front windscreen washer nozzles - auxiliary heating and ventilation with remote control and timer - heated front seats and outer rear seats)
- Paint finish: Pearl effect
- Rear side windows and rear window tinted
- Package: Business Premium incl. navigation system (DSG) (6+1 speakers, App-Connect incl. App-Connect Wireless for Apple CarPlay, ACC adaptive cruise control "stop & go", speed limiter, DAB+ radio, Travel Assist, Lane Assist, Emergency Assist, leather multifunction steering wheel, heated, with paddle shifters, multifunction camera, Discover Media navigation incl. streaming & internet, MP3 radio, heated windshield washer system, voice control, telephone interface, Comfort with inductive charging, textile floor mats front and rear, traffic sign recognition, heated front seats)
- Proactive occupant protection system in conjunction with "Front Assist" and "Side Assist" (detects critical traffic situations with increased accident potential - prepares vehicle occupants and the vehicle for a possible accident by tightening the front, fastened seat belts and securing the driver and front passenger, and closing open windows and the sunroof to a gap)

Brief expert findings

Documents submitted	At the time of the inspection, the vehicle registration certificate Part 2 (title) was available, but the vehicle registration certificate Part 1 (document) was not. (Copy)
VIN comparison	The vehicle identification number (VIN) was read from the vehicle and its conformity with the submitted documents was confirmed by the undersigned during the inspection.
Inspection	The inspection conditions were sufficient for the assessment of the vehicle. No lifting equipment or pit was available for inspecting the vehicle. Therefore, inspection of the vehicle's underside was only possible to a limited extent.
Test drive	No test drive/shunting maneuver was carried out during the inspection of the vehicle.
Engine function test	An engine test run was performed.

Value reducing factors

No.	Component group	Description
1	Roof	Roof - dent(s) - Smooth repair work
2	Misc.	Main inspection - Expired - Perform
3	Door - front left side	Door - Scratch(es) - Smart repair
4	2nd wheel set	1 tyre - Broken / torn - Replace
5	2nd wheel set	1 alloy rim - Scratch(es) - Loss in value
6	Boot lid / rear door	Boot lid - Scratch(es) - Paint
7	Rear bumper	Rear bumper - Scratched - Paint
8	Vehicle glazing	Rear window - Scratched - Replace

Wear and tear

No.	Component group	Description
1	Front bumper	Front bumper - Stone chips - No deduction
2	Bonnet	Bonnet - Stone chips - No deduction
3	Vehicle glazing	Windscreen - Stone chips - No deduction

The vehicle shows signs of wear and tear commensurate with its age and use.



Order/Scope of Order

An order was placed to prepare a sales report for the described vehicle. This report includes the following:

- Description of key vehicle information
- Documentation of equipment features
(Delivery by third-party service providers)
- Documentation of damage, defects, missing parts
- Documentation of prior damage, unrepaired prior damage, repainting
- A brief visual or functional inspection of the equipment details, if possible.
(Functional testing of driver assistance systems is not included in the scope of services!)
- a photographic documentation of the vehicle

Basis for the order

This product is based on the guidelines for vehicle returns and valuations published by Alphabet Fleet GmbH. The expert makes the specific findings in each individual case objectively, within the framework of the prescribed standards, based on their own expertise.

The vehicle inspection takes place in a fully assembled, unassembled state.

Damage or defects that can only be detected during disassembly/diagnostic work or through further investigation remain within the realm of prognostic risk. An increased risk exists due to concealed defects caused by fraudulent misrepresentation and which were not identifiable by the expert.

Damage or defects resulting from normal use or wear and tear of the vehicle will be accepted in accordance with the applicable standard.

There was no explicit identification or monetary consideration of the expected features within the product.

Features which, in their nature and extent, slightly exceed normal use but do not constitute unacceptable damage, will be documented and indicated as signs of wear, if applicable.

Damage or defects that, according to the applicable standard, can no longer be attributed to normal use or wear and tear are listed under "Value Reducing Factors" in the product description.

Depending on the product specification, a monetary ID can be provided. If this takes place, the costs can be 100% d or pro rata depending on the vehicle's age and mileage.

Previous damages

No apparent prior damage that had been repaired could be found on the vehicle.

Comments

- Die Unterbodenbesichtigung war nur ebenerdig und eingeschränkt möglich.
- Mehrkosten möglich .



Figure 1: Diagonal front (left)



Figure 2: Diagonal front (right)



Figure 3: Diagonal rear (left)



Figure 4: Diagonal rear (right)



Figure 5: Interior - front



Figure 6: Interior - rear



Figure 7: Instrument cluster



Figure 8: Instrument panel



Figure 9: Interior 360° view



Figure 10: Cargo area



Figure 11: VIN

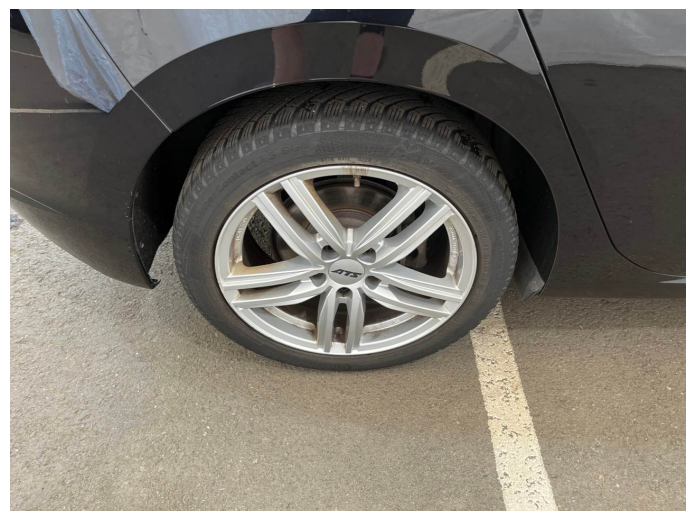


Figure 12: Mounted tyres



Figure 13: Documents



Figure 14: Documents



Figure 15: Documents



Figure 16: Documents



Figure 17: Additional tyres

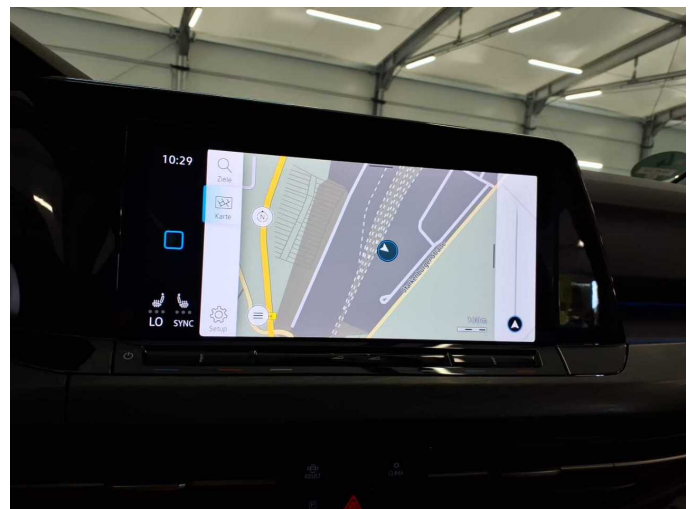


Figure 18: Navigation



Figure 19: Misc.



Figure 20: Misc.



Figure 21: Misc.

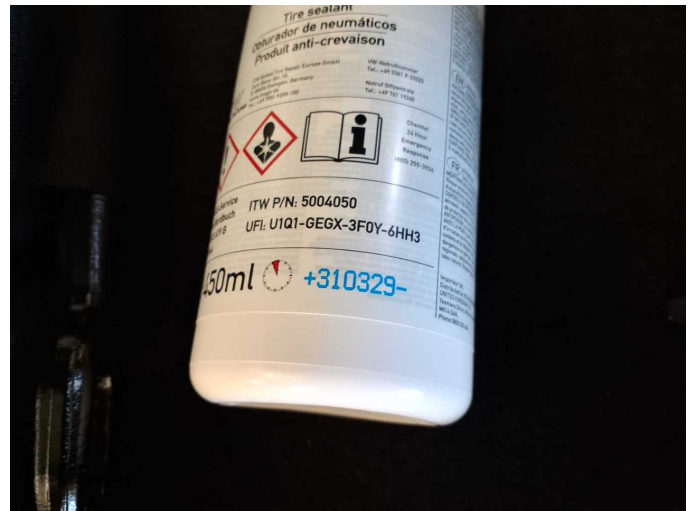


Figure 22: Misc.

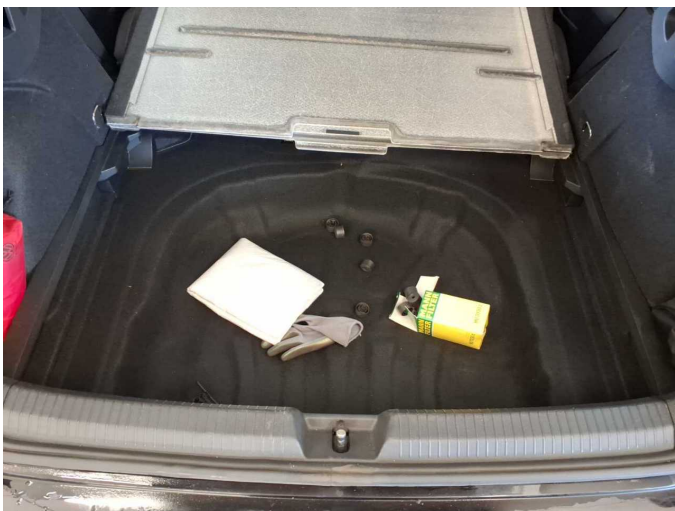


Figure 23: Misc.



Figure 24: Misc.



Figure 25: Misc.



Figure 26: Misc.



Figure 27: Misc.



Figure 28: Misc.



Figure 29: Misc.



Figure 30: Misc.



Figure 31: Misc.



Figure 32: Misc.

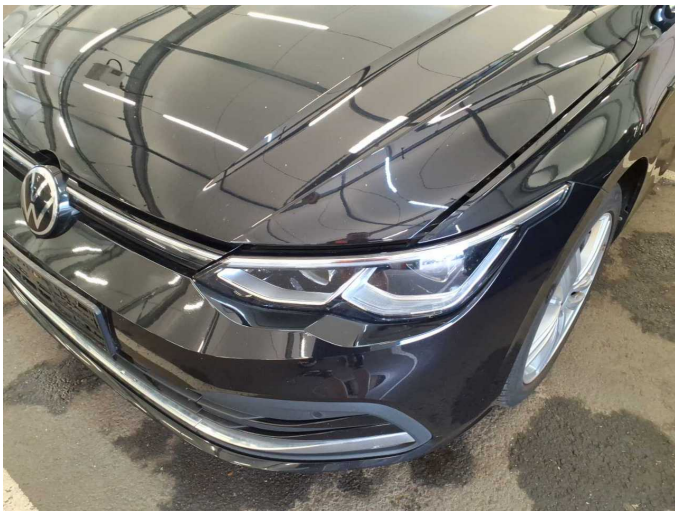


Figure 33: Misc.

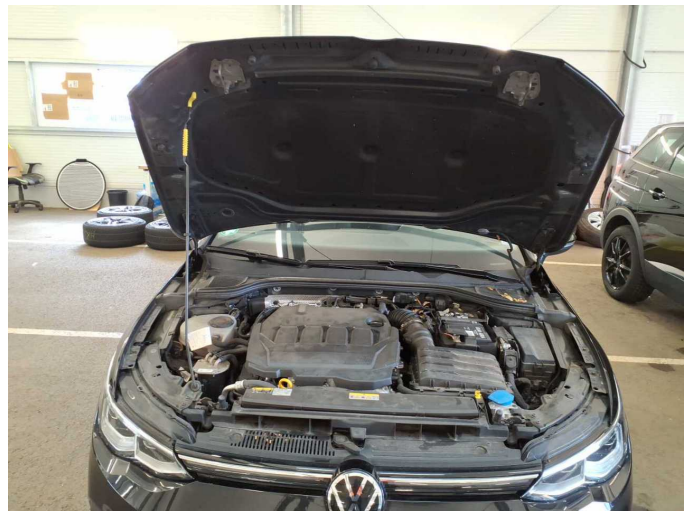
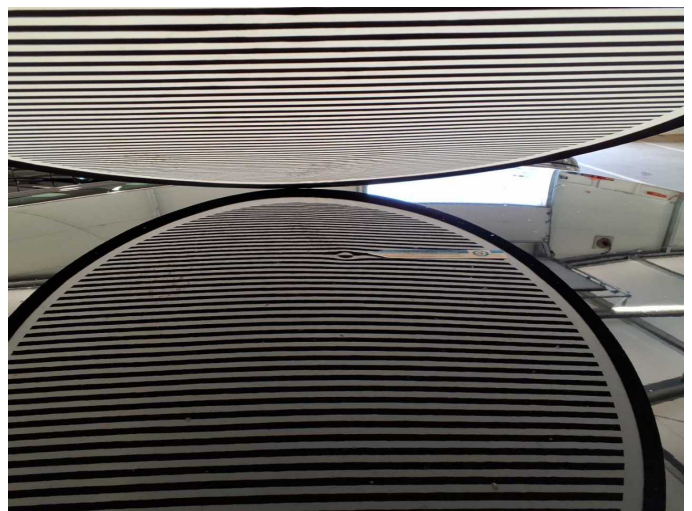


Figure 34: Misc.



Figure 35: Misc.



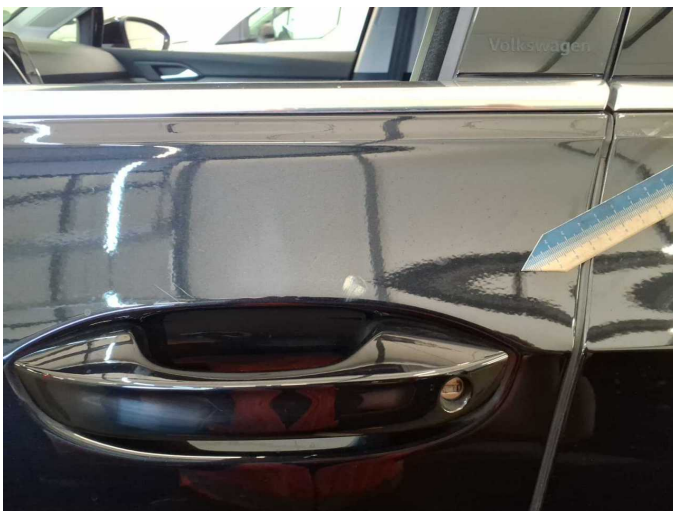
Damage 1: Roof: Roof - dent(s) - Smooth repair work



Damage 1: Roof: Roof - dent(s) - Smooth repair work



Damage 2: Misc.: Main inspection - Expired - Perform



Damage 3: Door - front left side: Door - Scratch(es) - Smart repair



Damage 3: Door - front left side: Door - Scratch(es) - Smart repair



Damage 3: Door - front left side: Door - Scratch(es) - Smart repair



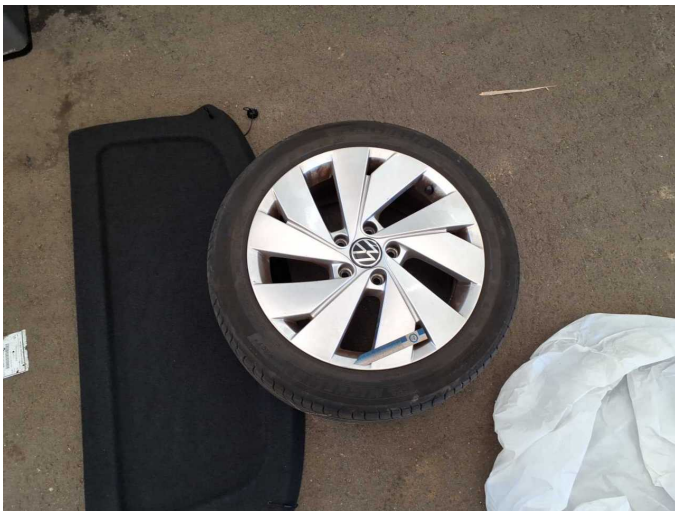
Damage 4: 2nd wheel set: 1 tyre - Broken / torn - Replace



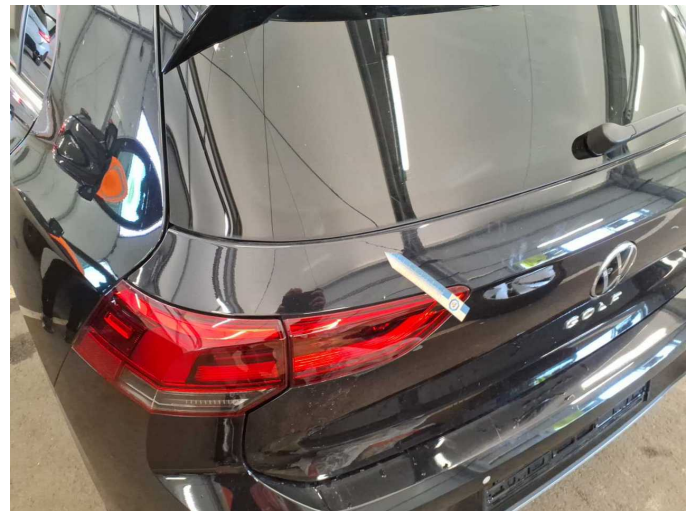
Damage 4: 2nd wheel set: 1 tyre - Broken / torn - Replace



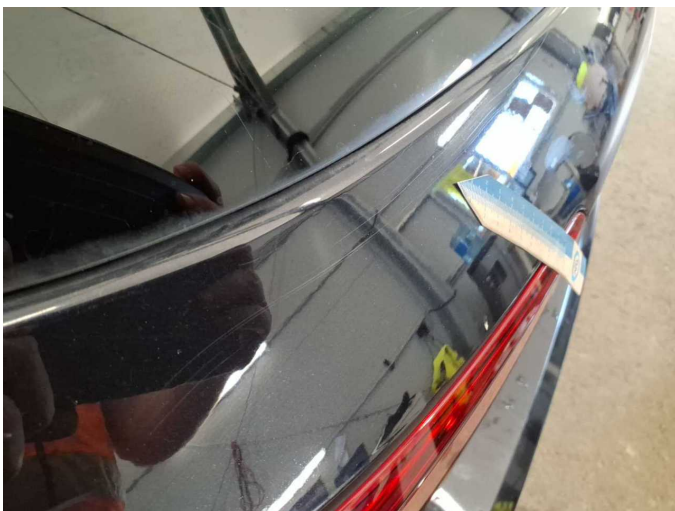
Damage 5: 2nd wheel set: 1 alloy rim - Scratch(es) - Loss in value



Damage 5: 2nd wheel set: 1 alloy rim - Scratch(es) - Loss in value



Damage 6: Boot lid / rear door: Boot lid - Scratch(es) - Paint



Damage 6: Boot lid / rear door: Boot lid - Scratch(es) - Paint



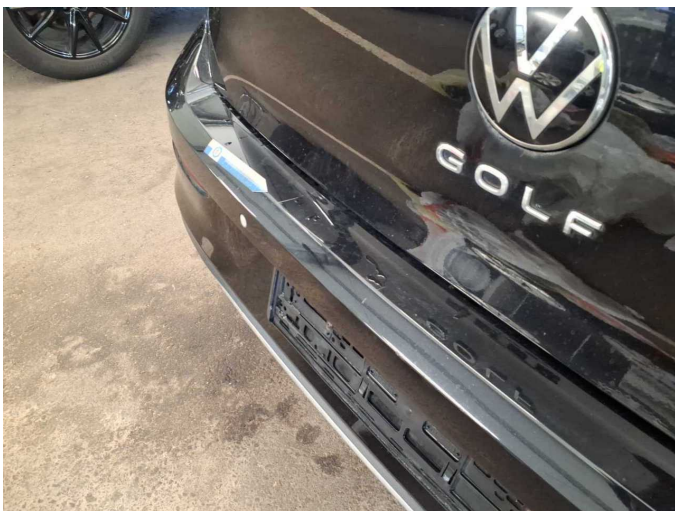
Damage 6: Boot lid / rear door: Boot lid - Scratch(es) - Paint



Damage 6: Boot lid / rear door: Boot lid - Scratch(es) - Paint



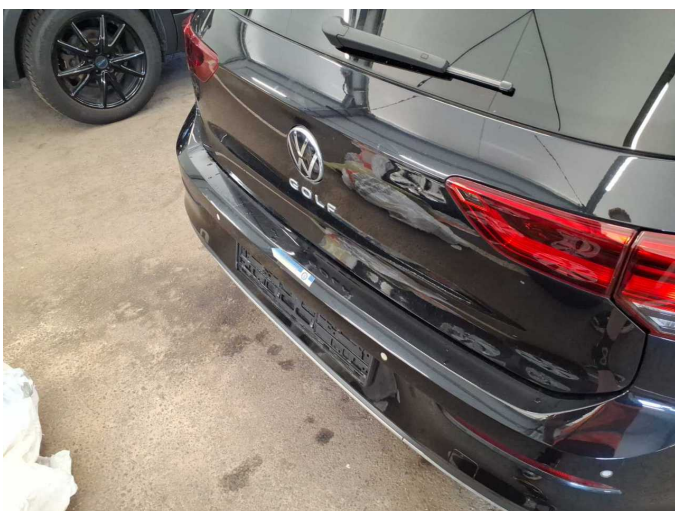
Damage 7: Rear bumper: Rear bumper - Scratched - Paint



Damage 7: Rear bumper: Rear bumper - Scratched - Paint



Damage 7: Rear bumper: Rear bumper - Scratched - Paint



Damage 7: Rear bumper: Rear bumper - Scratched - Paint



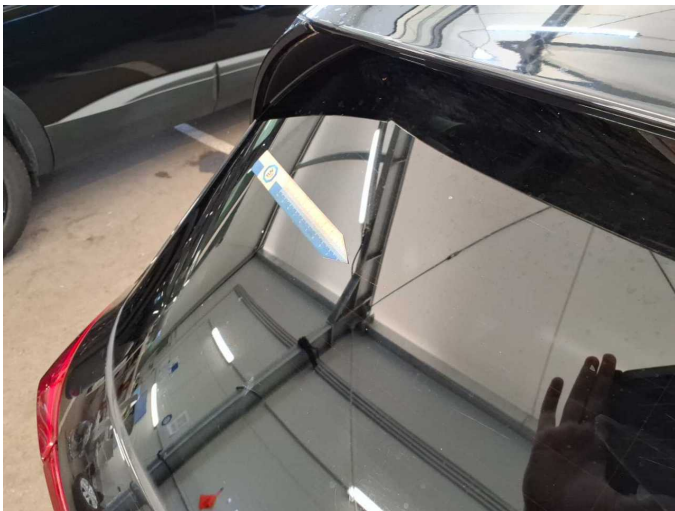
Damage 7: Rear bumper: Rear bumper - Scratched - Paint



Damage 7: Rear bumper: Rear bumper - Scratched - Paint



Damage 8: Vehicle glazing: Rear window - Scratched - Replace



Damage 8: Vehicle glazing: Rear window - Scratched - Replace



Damage 8: Vehicle glazing: Rear window - Scratched - Replace



Damage 8: Vehicle glazing: Rear window - Scratched - Replace



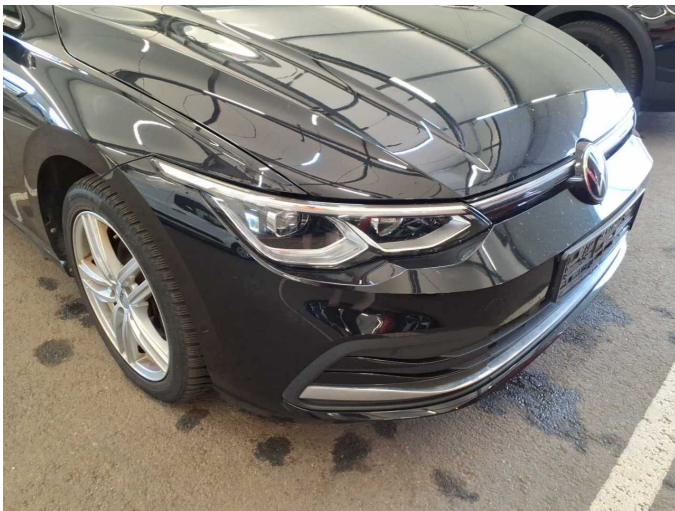
Damage 8: Vehicle glazing: Rear window - Scratched - Replace



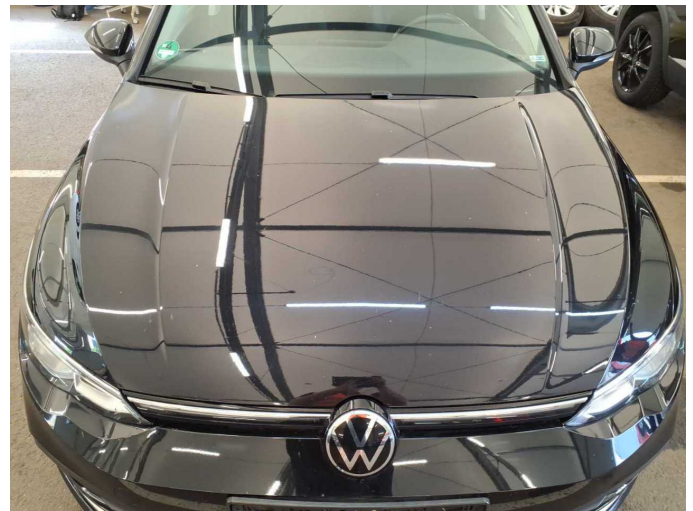
Damage 8: Vehicle glazing: Rear window - Scratched - Replace



Wear and tear 1: Front bumper: Front bumper - Stone chips - No deduction



Wear and tear 1: Front bumper: Front bumper - Stone chips - No deduction



Wear and tear 2: Bonnet: Bonnet - Stone chips - No deduction



Wear and tear 3: Vehicle glazing: Windscreen - Stone chips - No deduction



Wartungshistorie

(gemäß Auftraggeber Informationen)

Fahrgestellnummer: WVVZZZCDZMW107060

Hersteller / Modell: VOLKSWAGEN VW Golf 2.0 TDI SCR DSG Style

Datum	KM-Stand	Beschreibung
29.01.2026	96.494	Batterie ern; Systemtest/Eigendiagnose
03.09.2025	90.149	Kraftstofffilter ern; Luftfiltereinsatz ern; Motoröl b. Wartung; Ölfilter ern; Regelwartungsdienst; Systemtest/Eigendiagnose; Wartung Sonstiges
07.05.2024	62.473	AU; Bremse Sonstiges; Bremsflüssigkeit; Bremsflüssigkeit ern; Bremsklötze hinten; Bremsklötze vorne; Bremsscheiben hinten; Bremsscheiben vorne; Motoröl b. Wartung; Ölfilter ern; Regelwartungsdienst; Wartung Sonstiges
10.11.2022	31.095	Motoröl b. Wartung; Ölfilter ern; Regelwartungsdienst; Wartung Sonstiges; Wartung Sonstiges