

Expertise

Protocol number: 46146684
Order No. / Reference: 26496424
Inspection date: 23 Jun 2026

Manufacturer: Skoda

Model: Enyaq iV 80

VIN: TMBJC9NY7NF044323



Vehicle details

Manufacturer / Type / Model / Equipment

Skoda Enyaq iV 80

Vehicle Identification number TMBJC9NY7NF044323

Mileage (Read) 141,406 km

First registration 19 May 2022

Number of holders 1

Power / Engine displacement 70 kw / 0 ccm

Fuel type / Cylinder Electric / 0

Gearbox / Number of gears Direct drive / 1

Type of drive Rear drive

Type of vehicle Station wagon

Colour / colour code Black Magic Pearlescent (F9R)

Doors / Seats 5 / 5

Upholstery type Leather

Colour of upholstery Black

Re-import no

readiness to drive Roadworthy



Vehicle details			
Maintenance booklet / proof	digital evidence / incomplete	Next maintenance in	-39 Tag(e)
Last service on / at	05/2024 at 67,209		
Key is / should be	2 / 2	FZG documents	ZB#2 (B) was available (copy), ZB#1 (S) was not available.
		Letter No.	GJ916330
Previous damage / Accident	None detectable	Repainting	None detectable
Inspection conditions	sufficient	Lifting equipment / pit	No
Test drive	Not performed	Engine function test	Performed
readiness to drive	Roadworthy		
Manufacturer key number/ type code number	8004 / AWS 00100		
Emission standard	2017/1151;WLTP;reine Elektrofz	fine dust sticker	
Permitted total weight	2,648 kg	Empty weight	

Tyres

Mounted tyres				
#	Tyre size	Type of tyre	Manufacturer	Tread depth
1)	235/50 R20 100T	Summer tires (with run-flat tires) on Light alloy	Pirelli	5mm / 5mm
2)	255/45 R20 101V	Summer tyres on Light alloy	Michelin	5mm / 5mm
Additional tyres				
#	Tyre size	Type of tyre	Manufacturer	Tread depth
1)	235/55 R19 105W	Winter tyres on Light alloy	Falken	7mm / 7mm
2)	255/50 R19 107T	Winter tyres on Light alloy	Goodyear	5mm / 5mm

Legend: Tread depth information for the left tire is listed first, for the right tire it is listed second on the axle in the direction of travel.

TÜV SÜD Auto Partner GmbH
Wiesenring 2
04159 Leipzig

Inspection location
Hartmann Fleet Professionals GmbH
Leerenstraße 25
29683 Bad Fallingbommel



Equipment



Standard equipment

- Automatic interior mirror dimming
- Climatronic air conditioning (2-zone) (fully automatic, separately adjustable for driver and front passenger, including odor and allergen filter)
- Design Selection Loft (seat covers in fabric/faux leather - decorative trim strips "brushed aluminum" - headliner in grey - front center armrest, including storage compartment - rear center armrest with cup holders and pass-through - floor mats - ambient lighting for front door panels, multicoloured - footwell lighting and illuminated door handle recesses - umbrella)
- Electric windows front and rear (including anti-pinch protection and child safety lock)
- Evasive steering assist including turning assistant (The turning assistant monitors oncoming vehicles when you turn left (for left-hand drive vehicles). If there is an immediate danger, it brings the vehicle to a standstill and a warning signal sounds.)
- Heated rear window
- Isofix anchorage on the front passenger seat
- Isofix anchorage on the outer rear seats including top tether
- LED headlights with daytime running lights
- LED taillights
- Package: Chrome (chrome trim strips on the outside of the side windows - AERO anodized roof rails)
- Package: Parking BASIC (front and rear parking sensors - reversing camera)
- Radio: Infotainment system with capacitive 13" color display (8 speakers - 2 x USB ports (Type-C) at the front - Navigation system preparation - DAB+ digital radio reception - Bluetooth hands-free phone system - Voice control - SmartLink (MirrorLink, Apple CarPlay, Android Auto) - Wireless SmartLink for Apple CarPlay and Android Auto)
- Rear window wiper including windshield washer system
- Seat belts (Height-adjustable three-point seat belts in the front - Three three-point seat belts in the rear - Seat belt reminder indicators on the front and rear seats)
- Skoda Care Connect (SOS emergency call function (eCall including automatic activation in the event of an accident with airbag deployment) - Free remote vehicle access to iV-specific functions for 10 years (iV Remote Services Basic) such as starting and stopping the charging process, creating charging plans, setting the interior climate control before starting a journey, etc. - Mobility service (connection option for rapid assistance in the event of a breakdown) - Information service - Free remote vehicle access for 1 year (Remote Access))
- Steering wheel adjustable for height and reach
- 12V socket - in the trunk
- acoustic windscreen
- Airbag for driver and front passenger (passenger airbag can be deactivated)
- Airbag, center airbag front
- Airbag, front and rear head airbags
- Airbag, front side airbags
- Anti-lock braking system (ABS)
- Central locking including remote control integrated into the key (EASY START (keyless start-stop system))
- Charging cable for AC charging stations (Mode 3 charging cable, Type 2, 16A) (Fast charging connector (CCS / Combo 2))
- Child safety locks on the rear doors
- Cruise control
- Digital instrument cluster (Virtual Cockpit)
- E-Sound (external speaker for generating a driving sound)
- Electrically adjustable, heated and folding exterior mirrors, including automatic dimming.
- Electronic parking brake including auto-hold function
- ESC Electronic Stability Control
- Front and rear headrests are height-adjustable.
- Front radar assist with pedestrian and cyclist detection and city emergency braking function (The front radar assist is a safety system with collision warning: If confronted with an unavoidable collision, it brakes the vehicle to minimize the consequences. It also performs emergency braking if a pedestrian or cyclist attempts to cross the vehicle's path. The front radar assist recognizes from the way the driver moves the vehicle that they are attempting to avoid an obstacle and actively intervenes in the steering to steer around it.)
- Grey headliner
- Hill start assist
- Immobiliser
- Increased battery charging power max. 125 kW incl. 1 year free monthly basic fee at Ionity
- Lane keeping assistant (Lane Assist)
- Manual headlight range adjustment
- Outdoor temperature display
- Package: Drive BASIC (paddle shifters for adjusting recuperation strength - driving profile selection - heated leather steering wheel with multifunction buttons - steering wheel with hands-off detection)
- Power steering
- Radio accessories: SmartLink (Android Auto and Apple CarPlay)
- Radio accessories: Wireless SmartLink
- Rain sensor and driving light assistant with coming and leaving home function
- Rear seat backrest split 60:40, foldable
- Removable boot cover
- Safety lights in the front side doors
- Seats: Front seats are height-adjustable, including manually adjustable lumbar support.



- Storage compartments (Four roof grab handles, rear with coat hooks - Warning vest compartment in the doors - Storage compartments in the front door panels with 1.5l bottle holders - Storage compartments in the rear door panels - Umbrella compartments in the front doors - Ticket holder on the windshield - Ice scraper in the tailgate panel - Coat hooks on the B-pillars - Cup holder in the front center console - Storage compartments in the trunk)
- Tinted windows
- Transmission: 1-speed (EV)
- Wheels: 19" Proteus Silver alloy wheels (8Jx19 tires 235/55 R19 101T front, 255/50 R19 103T rear)

- Speed limiter
- Third brake light
- Tire mobility kit (tire repair spray incl. compressor)
- Tire pressure monitoring
- Traction control (ASR)
- Traffic sign recognition

Extra equipment

- Airbag, rear side airbags
- Design Selection Suite
- Reversible boot mat
- Package: Drive SPORT BASIC (paddle shifters for adjusting recuperation strength - driving profile selection - heated leather steering wheel in sport design with multifunction buttons - steering wheel with hands-off detection - progressive steering)
- Package: Infotainment BASIC (Navigation system - Infotainment Online 3 years (Online map updates for navigation; Display of weather data, news, headlines; Charging station and parking space search; Online POI search; Online destination import))
- Package: Light & Sight BASIC (LED matrix headlights incl. AFS and dynamic high beam assist; in rain and bad weather conditions, the cornering and curve lights illuminate the area directly in front of the car better - headlight cleaning system - full LED taillights with animated turn signals)
- heat pump

- Swiveling trailer hitch (including trailer stabilization)
- Luggage net partition
- Paint finish: Pearl effect
- Package: Driving Assistance BASIC (Adaptive Distance Assist (ACC) - Lane Change and Parking Assist - Proactive Occupant Protection)
- Package: Family BASIC (sunshade roller blind for rear side windows - 230V socket and 2 x USB-C charging ports in the rear - storage box for rear seat row)
- Package: Basic climate control (Heated front seats - Heated windscreen washer nozzles - Climatronic air conditioning (3-zone), fully automatic, separately adjustable for driver, front passenger and rear passengers, including odor and particle filter)
- Panoramic sunroof, electric (deletion of the glasses compartment in the headliner)
- Wheels: 20" Vega anthracite alloy wheels, polished
- Wheels: 20" Vega Silver alloy wheels (front: 8Jx20 tires 235/50 R20 100T, Seal rear: 9x20 tires 255/45 R20 101T)

Brief expert findings

Documents submitted	At the time of the inspection, the vehicle registration certificate Part 2 (title) was available, but the vehicle registration certificate Part 1 (document) was not. (Copy)
VIN comparison	The vehicle identification number (VIN) was read from the vehicle and its conformity with the submitted documents was confirmed by the undersigned during the inspection.
Inspection	The inspection conditions were sufficient for the assessment of the vehicle. No lifting equipment or pit was available for inspecting the vehicle. Therefore, inspection of the vehicle's underside was only possible to a limited extent.
Test drive	No test drive/shunting maneuver was carried out during the inspection of the vehicle.
Engine function test	An engine test run was performed.
readiness to drive	The vehicle was roadworthy at the time of inspection.



Value reducing factors

No.	Component group	Description
1	Misc.	Main inspection - No evidence - No deduction
2	Side panel - rear right side	Side panel - Dent / paintcoat damage - Smart repair
3	Wheel / tyres	Alloy rim - rear right side - Scratch(es) - Loss in value
4	Misc.	Inspection / maintenance - Due - Perform
5	Rear bumper	Rear bumper - Scratch(es) - Paint
6	Front bumper	Front bumper - Paint defect - Repair and paint

Wear and tear

No.	Component group	Description
1	Trim / covers	Boot lid - interior trim - Scratch(es) - No deduction
2	Roof	Roof - dent(s) - No deduction
3	Rear bumper	Rear bumper (Zierleiste) - Scratch(es) - No deduction
4	Vehicle glazing	Windscreen - Stone chips - No deduction

The vehicle shows signs of wear and tear commensurate with its age and use.

Order/Scope of Order

An order was placed to prepare a sales report for the described vehicle. This report includes the following:

- Description of key vehicle information
- Documentation of equipment features
(*Delivery by third-party service providers*)
- Documentation of damage, defects, missing parts
- Documentation of prior damage, unrepaired prior damage, repainting
- A brief visual or functional inspection of the equipment details, if possible.
(*Functional testing of driver assistance systems is not included in the scope of services!*)
- a photographic documentation of the vehicle

Basis for the order

This product is based on the guidelines for vehicle returns and valuations published by Alphabet Fleet GmbH. The expert makes the specific findings in each individual case objectively, within the framework of the prescribed standards, based on their own expertise.

The vehicle inspection takes place in a fully assembled, unassembled state.

Damage or defects that can only be detected during disassembly/diagnostic work or through further investigation remain within the realm of prognostic risk. An increased risk exists due to concealed defects caused by fraudulent misrepresentation and which were not identifiable by the expert.

Damage or defects resulting from normal use or wear and tear of the vehicle will be accepted in accordance with the applicable standard.

There was no explicit identification or monetary consideration of the expected features within the product.

Features which, in their nature and extent, slightly exceed normal use but do not constitute unacceptable damage, will be documented and indicated as signs of wear, if applicable.

Damage or defects that, according to the applicable standard, can no longer be attributed to normal use or wear and tear are listed under "Value Reducing Factors" in the product description.

Depending on the product specification, a monetary ID can be provided. If this takes place, the costs can be 100% d or pro rata depending on the vehicle's age and mileage.

Previous damages

No apparent prior damage that had been repaired could be found on the vehicle.



Comments

- Winterradsatz ist kein Bestandteil des Auslieferungsumfangs.



Figure 1: Diagonal front (left)



Figure 2: Diagonal front (right)



Figure 3: Diagonal rear (left)



Figure 4: Diagonal rear (right)



Figure 5: Interior - front



Figure 6: Interior - rear



Figure 7: Instrument cluster



Figure 8: Instrument panel



Figure 9: Interior 360° view



Figure 10: Cargo area

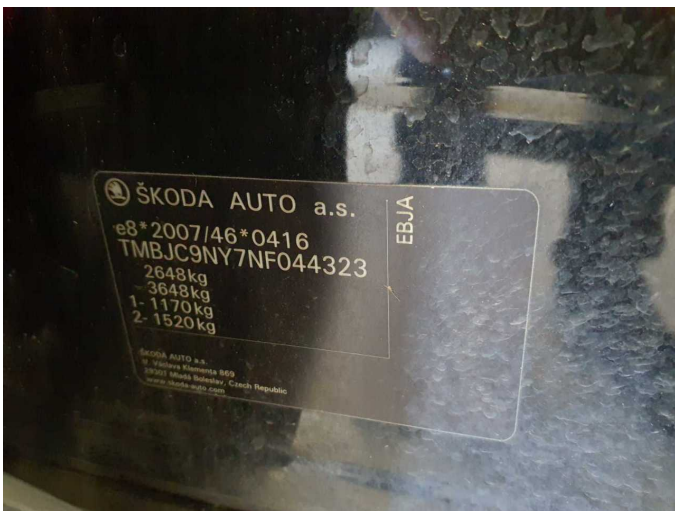


Figure 11: VIN



Figure 12: Mounted tyres



Figure 13: Documents



Figure 14: Additional tyres



Figure 15: Navigation



Figure 16: Misc.



Figure 17: Misc.

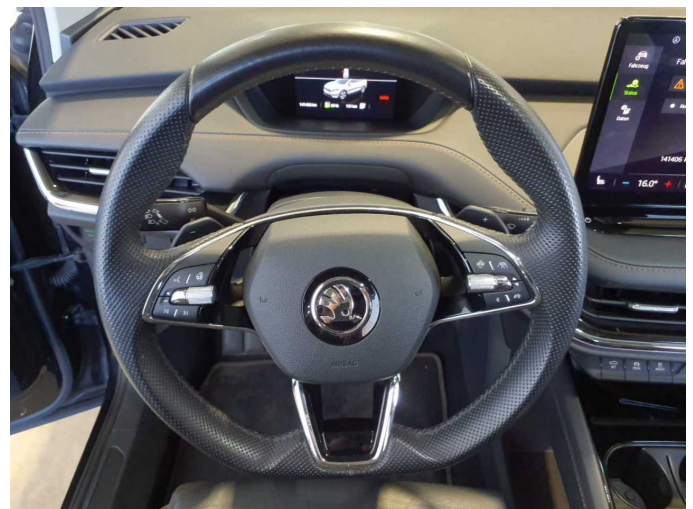


Figure 18: Misc.



Figure 19: Misc.



Figure 20: Misc.

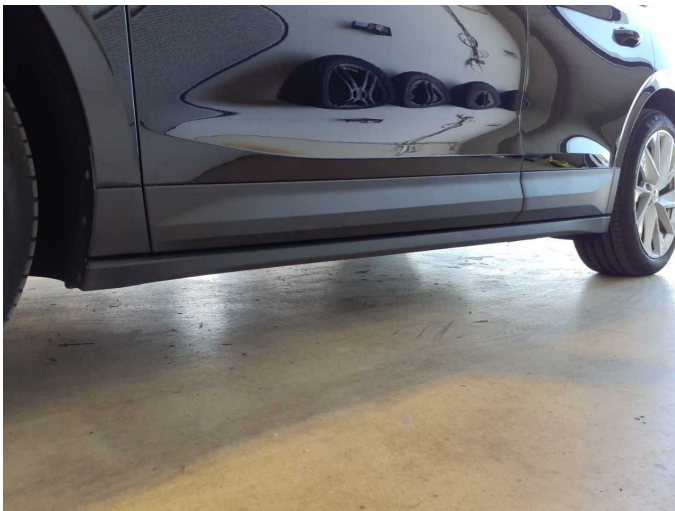


Figure 21: Misc.



Figure 22: Misc.



Figure 23: Misc.



Figure 24: Misc.



Figure 25: Misc.



Figure 26: Misc.

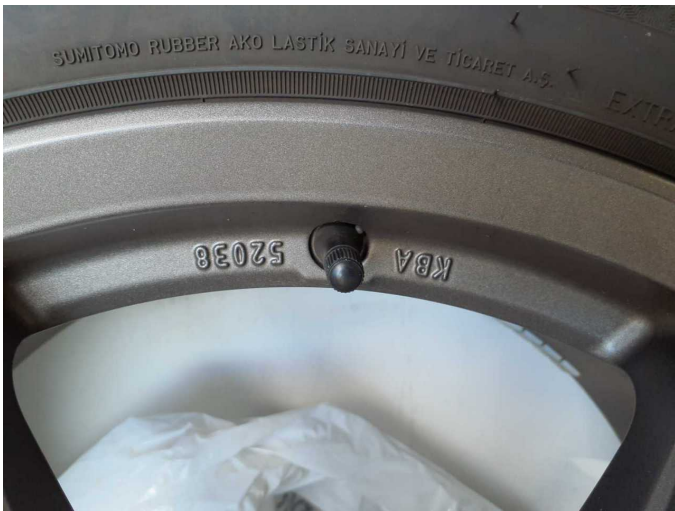


Figure 27: Misc.



Figure 28: Misc.



Figure 29: Misc.



Damage 2: Side panel - rear right side: Side panel - Dent / paintcoat damage - Smart repair



Damage 2: Side panel - rear right side: Side panel - Dent / paintcoat damage - Smart repair



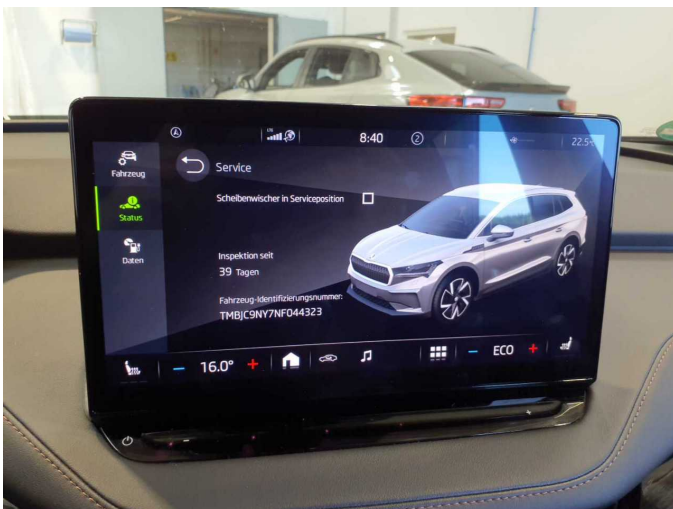
Damage 2: Side panel - rear right side: Side panel - Dent / paintcoat damage - Smart repair



Damage 3: Wheel / tyres: Alloy rim - rear right side - Scratch(es) - Loss in value



Damage 3: Wheel / tyres: Alloy rim - rear right side - Scratch(es) - Loss in value



Damage 4: Misc.: Inspection / maintenance - Due - Perform



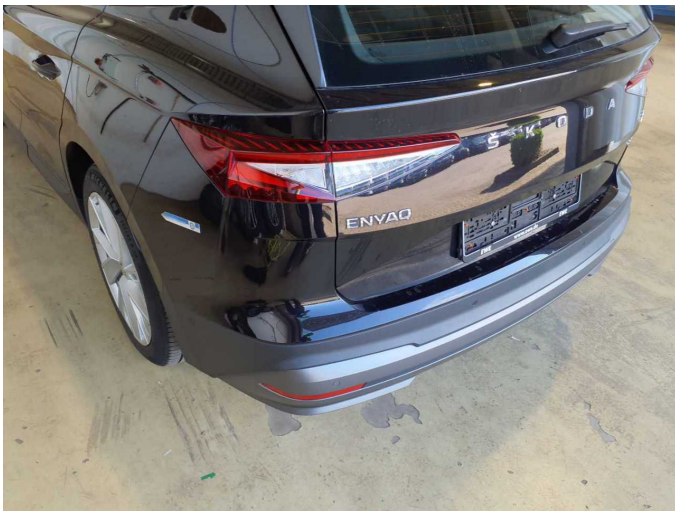
Damage 5: Rear bumper: Rear bumper - Scratch(es) - Paint



Damage 5: Rear bumper: Rear bumper - Scratch(es) - Paint



Damage 5: Rear bumper: Rear bumper - Scratch(es) - Paint



Damage 5: Rear bumper: Rear bumper - Scratch(es) - Paint



Damage 6: Front bumper: Front bumper - Paint defect - Repair and paint



Damage 6: Front bumper: Front bumper - Paint defect - Repair and paint



Damage 6: Front bumper: Front bumper - Paint defect - Repair and paint