

## Expertise

Protocol number: 46161572  
Order No. / Reference: 26623460  
Inspection date: 23 Jun 2026

Manufacturer: Ford

Model: Mondeo Turnier 2.0 EcoBlue Titanium

VIN: WF0FXXWPCFNY70349



### Vehicle details

#### Manufacturer / Type / Model / Equipment

Ford Mondeo Turnier 2.0 EcoBlue Titanium

**Vehicle Identification number** WF0FXXWPCFNY70349

**Mileage (Read)** 117,742 km

**First registration** 7 Apr 2022

**Number of holders** 1

**Next periodical technical inspection** 05/2027  
(Report on hand)

**Power / Engine displacement** 110 kw / 1,997 ccm

**Fuel type / Cylinder** Diesel / 4

**Gearbox / Number of gears** Manual / 6

**Type of drive** Front drive

**Type of vehicle** Station wagon

**Colour / colour code** Frozen White

**Doors / Seats** 5 / 5

**Upholstery type** Cloth

**Colour of upholstery** Anthracite-Black

**Vehicle with smoke odor** no



Vehicle details			
<b>Maintenance booklet / proof</b>	digital proof / complete	<b>Next maintenance in</b>	92 %
<b>Last service on / at</b>	04/2026 at 116,346 km		
<b>Key is / should be</b>	2 / 2	<b>FZG documents</b>	ZB#2 (B) was available (copy), ZB#1 (S) was not available.
		<b>Letter No.</b>	GH428856
<b>Previous damage / Accident</b>	None detectable	<b>Repainting</b>	Detectable
<b>Inspection conditions</b>	sufficient	<b>Lifting equipment / pit</b>	yes
<b>Test drive</b>	short drive on the company premises	<b>Engine function test</b>	Performed
<b>Manufacturer key number/ type code number</b>	8566 / BJB 00107		
<b>Emission standard</b>	EURO6;WLTP;AP;PI/CI; M, N1 I	<b>fine dust sticker</b>	
<b>Permitted total weight</b>	2,330 kg	<b>Empty weight</b>	

## Tyres

Mounted tyres				
#	Tyre size	Type of tyre	Manufacturer	Tread depth
1)	215/55 R17 98W	Summer tyres on Light alloy	Goodyear	5mm / 4mm
2)	215/55 R17 98W	Summer tyres on Light alloy	Goodyear	6mm / 6mm
Additional tyres				
#	Tyre size	Type of tyre	Manufacturer	Tread depth
1)	215/60 R16 99H	Winter tyres on Light alloy	Pirelli	5mm / 5mm
2)	215/60 R16 99H	Winter tyres on Light alloy	Pirelli	5mm / 5mm
Replacement				
Typ	Tyre size	Type of tyre	Manufacturer	Tread depth
	Tirefit	Expiration date 02/2026		

**Legend: Tread depth information for the left tire is listed first, for the right tire it is listed second on the axle in the direction of travel.**



## Equipment

### Standard equipment

- Activated carbon filter
- Anti-lock braking system (ABS) with electronic brake force distribution (EBD)
- Attachment points for safety partition grilles
- Tires: 7 J x 17 alloy wheels (4) with 215/55 R 17 tires
- Tires: Tire pressure monitoring system (TPMS)
- third brake light
- headliner, light
- Diesel particulate filter (DPF)
- Front door sill trim
- Driver information system - 25.4 cm color display (digital/analog)
- Electric windows front and rear
- Electronic parking brake
- Ford Power Start function
- Heated windshield
- luggage compartment cover
- Cruise control system with intelligent speed limiter
- Back window, heater
- Interior lighting with delay circuit
- Intelligent security system
- Electric child safety lock
- Rear headrests (3), height adjustable
- Paint finish: Solid
- Leather gear knob
- Adjustable steering column
- Front center console with padded armrests
- Navigation: Ford Navigation including Ford SYNC 3 with AppLink, 8" touchscreen (20.3 cm screen) with DAB/DAB+
- Front and rear parking pilot system
- LED taillights
- Windscreen wipers with rain sensor
- Headlight assistant with day/night sensor
- Side skirts painted in car color
- Seats: Driver and passenger seats, 4-way manually adjustable
- Seats: Sports seats with fabric upholstery
- Start-stop system
- 12-volt socket in the front interior
- Daytime running light
- Traffic sign recognition system
- Warning system for unfastened seat belts in the front and second row of seats
- Cigarette lighter
- Ambient lighting in the front, including door storage compartment, front door handle and footwell lighting.
- Exterior mirrors in body color, driver and passenger side, electrically adjustable and heated
- Tires: Tire repair kit
- Hill start assist
- Chrome decor
- Roof rails, aluminum look
- Tachometer
- Electronic Safety and Stability Program (ESP)
- Lane keeping assist including lane keeping assist and driver fatigue warning
- High Beam Assist
- Ford Easy Fuel
- FordPass Connect including eCall, live traffic information and Wi-Fi hotspot
- Luggage compartment lighting
- Transmission: 6-speed manual transmission
- rear window wiper
- Interior mirror automatically dimming
- Isofix bracket
- Air conditioning with automatic temperature control
- Front headrests, 4-way height and tilt adjustable
- LED design daytime running lights in the fog lights
- Steering wheel: Multifunction leather steering wheel
- Reading lights front and rear
- MyKey key system (individually programmable second key)
- Fog light
- Emergency brake light
- Pre-Collision Assist
- Rear seat backrest, foldable, 60:40 split
- Headlight dipped beam with switch-off delay including "greeting function"
- Electromechanical speed-dependent power steering
- Seats: Map pocket on the back of the front passenger seat
- Seats: Map pocket on the driver's seat backrest
- Seats: Front seats can be heated individually and variably.
- 12-volt power outlet in the luggage compartment
- Front bumper painted in body color
- Carpet floor mats front and rear
- Lashing eyes in the luggage compartment floor
- Immobiliser
- Central locking



### Extra equipment

- Electrically swiveling trailer hitch (ESP trailer stabilization - continuous power supply - switched power supply - hill start assist)
- Package: Business 2 (Sony navigation system incl. Ford SYNC 3 with AppLink and 8" touchscreen (20.3 cm), additionally with premium sound system and DAB/DAB+ radio, reversing camera, parking assistant with parallel and perpendicular parking function incl. front and rear parking sensors, blind spot information system incl. cross traffic alert and dynamic distance detection, electric tailgate, adaptive LED headlights, LED headlights with adaptive steering and automatic headlight range control, LED daytime running lights, adaptive cruise control)
- Seats: Ford ergonomic seat (driver and front passenger seat adjustable in 18 ways: - length, height and tilt of the seat - extendable thigh support - adjustable backrest - lumbar support electrically adjustable in 4 ways - fabric upholstery)
- Anti-theft alarm system including double locking (with interior monitoring) (also with independent power supply)
- Paint finish: Frost White
- Package: Winter (Heated windscreen - Heated leather steering wheel - 230-volt socket in center console (not in conjunction with hybrid engine) - Individually and variably heated front seats - Variably heated rear bench seat)
- Panoramic sliding sunroof, electric (with heat protection and anti-pinch protection including sunshades in the rear side doors and electric sun visor)
- Side windows from the 2nd row of seats and rear window, dark tinted.
- Safety partition for luggage compartment, 2nd row of seats

### Retrofitted equipment

- 2 kg powder fire extinguisher
- Protective film for rear bumper

### Brief expert findings

Documents submitted	At the time of the inspection, the vehicle registration certificate Part 2 (title) was available, but the vehicle registration certificate Part 1 (document) was not. (Copy)
VIN comparison	The vehicle identification number (VIN) was read from the vehicle and its conformity with the submitted documents was confirmed by the undersigned during the inspection.
Inspection	The inspection conditions were sufficient for the assessment of the vehicle. Lifting equipment and/or a pit were available for examining the vehicle.
Test drive	A short maneuvering and shunting exercise was carried out on the company premises.
Engine function test	An engine test run was performed.

### Value reducing factors

No.	Component group	Description
1	Roof	Roof rail - right side (Dichtstopfen) - Missing - Replace
2	Rear bumper	Rear bumper (Schutzfolie) - Missing - Replace
3	Equipment	Tirefit filler - Expired - Replace
4	Side panel - rear right side	Side panel - Scratch(es) - Smart repair
5	Wheel / tyres	Alloy rim - front right side (Materialabtrag) - Scratched - Replace
6	Front bumper	Front bumper - Scratched - Paint
7	Rear bumper	Rear bumper - Scratch(es) - Paint



## Wear and tear

No.	Component group	Description
1	Side panel - rear left side	Sill - Scratch(es) - No deduction
2	Trim / covers	Door trim - rear left side - Scratch(es) - No deduction
3	Sill - left side	Trim - Scratch(es) - No deduction
4	Mudguard - right side	Mudguard - right side - Stone chips - No deduction
5	Bonnet	Bonnet - Stone chips - No deduction
6	Roof	Roof - dent(s) - No deduction
7	Side panel - rear left side	Side panel - dent(s) - No deduction
8	Mudguard - left side	Mudguard - left side - Stone chips - No deduction

The vehicle shows signs of wear and tear commensurate with its age and use.

## Repainting

### No. Repainting

- 1 Roof rail - right side
- 2 Side panel - rear right side

## Paint coat thickness measurement

Roof rail - right side	269 µm	Side panel - rear right side	891 µm
------------------------	--------	------------------------------	--------

## Order/Scope of Order

An order was placed to prepare a sales report for the described vehicle. This report includes the following:

- Description of key vehicle information
- Documentation of equipment features  
(*Delivery by third-party service providers*)
- Documentation of damage, defects, missing parts
- Documentation of prior damage, unrepaired prior damage, repainting
- A brief visual or functional inspection of the equipment details, if possible.  
(*Functional testing of driver assistance systems is not included in the scope of services!*)
- a photographic documentation of the vehicle

## Basis for the order

This product is based on the guidelines for vehicle returns and valuations published by Alphabet Fleet GmbH. The expert makes the specific findings in each individual case objectively, within the framework of the prescribed standards, based on their own expertise.

The vehicle inspection takes place in a fully assembled, unassembled state.

Damage or defects that can only be detected during disassembly/diagnostic work or through further investigation remain within the realm of prognostic risk. An increased risk exists due to concealed defects caused by fraudulent misrepresentation and which were not identifiable by the expert.

Damage or defects resulting from normal use or wear and tear of the vehicle will be accepted in accordance with the applicable standard.

There was no explicit identification or monetary consideration of the expected features within the product.

Features which, in their nature and extent, slightly exceed normal use but do not constitute unacceptable damage, will be documented and indicated as signs of wear, if applicable.

Damage or defects that, according to the applicable standard, can no longer be attributed to normal use or wear and tear are listed under "Value Reducing Factors" in the product description.

Depending on the product specification, a monetary ID can be provided. If this takes place, the costs can be 100% d or pro rata depending on the vehicle's age and mileage.



## Previous damages

No apparent prior damage that had been repaired could be found on the vehicle.



Figure 1: Diagonal front (left)



Figure 2: Diagonal front (right)



Figure 3: Diagonal rear (left)



Figure 4: Diagonal rear (right)



Figure 5: Interior - front



Figure 6: Interior - rear



Figure 7: Instrument cluster



Figure 8: Instrument panel



Figure 9: Interior 360° view



Figure 10: Cargo area



Figure 11: VIN



Figure 12: Mounted tyres



90765 Fürth  
 Tel.: 0911/979990

2662295

(1) Fahrzeug-Ident-Nr.	WF0FXXWPCFN70349 2	(2) Amtl. Kennzeichen:	HL MG 1926 (D)
(3) Prüflort:	0001547119 / 91126 Schwabach	(3) Prüfetermin:	26.05.2025, 14:37 Uhr
(4) Stand Wegstreckenzähler:	92598 km	(5) Fahrzeugklasse:	M1 / AC / Fz z. Pers.bef.b. 8 Spl. / Kombimotocycle
Fahrzeughersteller:	FORD (D) / 8566	Fahrzeugtyp:	SA7 / BLB00107
Variante:	YLCC1FX	Versian:	SCEACNAZGBY
Zulässige Gesamtmasse:	2330 kg	Erstzulassung / Letzte HU:	07.04.2022 /
Handelsname (D.3):	Mondeo	IKB-Prüfziffer:	LA#JcYZL

Sehr geehrte(r) Kunde/Kundin,  
 an Ihrem Fahrzeug wurden zum Zeitpunkt der Untersuchung keine Mängel festgestellt.

(7) Ergebnis:  Ohne Mängel  HU-Plakette: Zugeteilt  (8) Nächste Untersuchung spätestens bis: 05/2027

(9) Verantwortliche Person: Maximilian Mißberger (00247195)  
 TÜV Rheinland Kraftfahrt GmbH

Stempel und Unterschrift F4.28.17 / Z1.25.7 1. Exemplar

(10) Sonstige Angaben:  
**Messwerte Betriebsbremse**

Achse	Links	Rechts	Diff. (%)	Sum. (daN)	Vorgabe Bremskraft (daN)	Brems. Anf.	Entspr. Pedalkraft (N)	Achsanteil (%)	Vorgabe Achsenanteil (%)
1	324	315	2,8	639	473	32	66	79,1966	58,0
2	294	276	6,2	570	507	108,6	197	20,8034	13,0

**Messwerte Feststellbremse**

Achse	Links	Rechts	Diff. (%)	Sum. (daN)	Blockiert
1	147	105	27,9	253	Ja

Abbr. FBA: 10,9 %

Figure 13: Documents

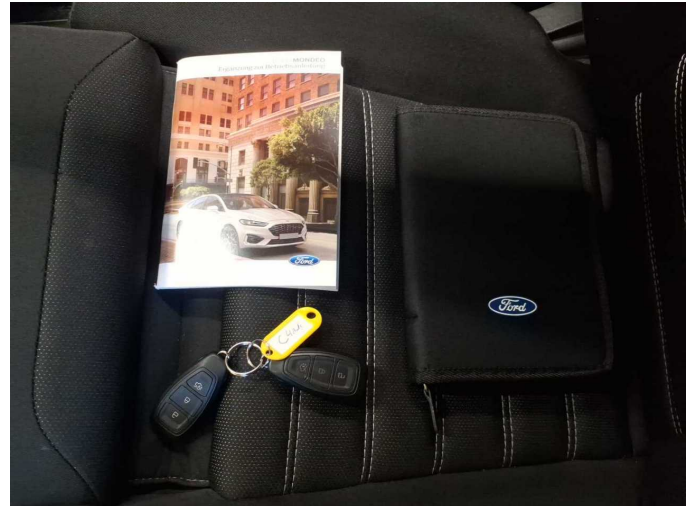


Figure 14: Documents



Figure 15: Documents



Figure 16: Additional tyres

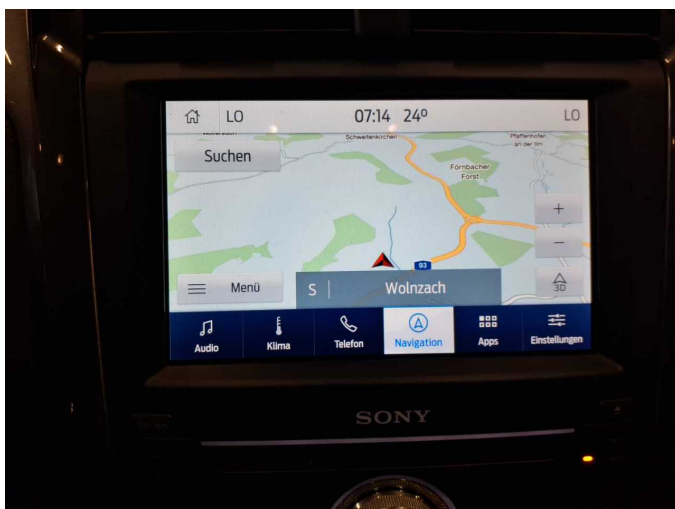


Figure 17: Navigation



Figure 18: Misc.



Figure 19: Misc.



Figure 20: Misc.



Figure 21: Misc.



Figure 22: Misc.

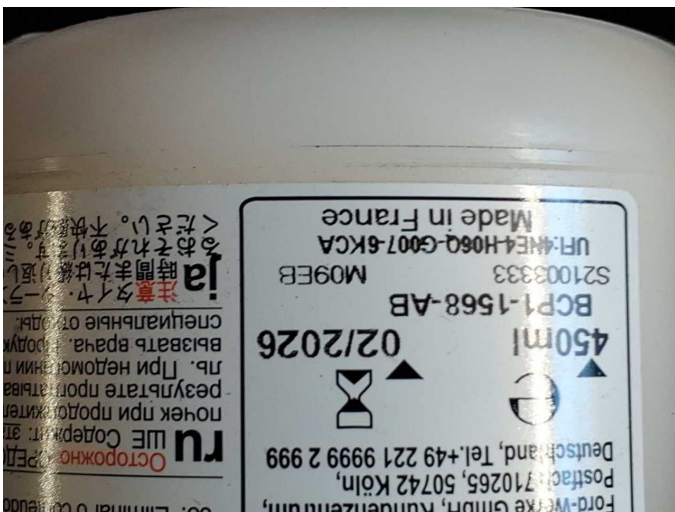


Figure 23: Misc.

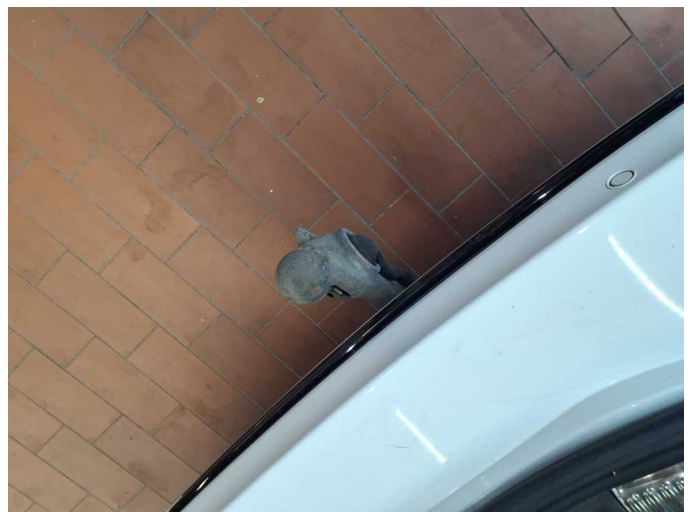


Figure 24: Misc.



Figure 25: Misc.



Figure 26: Misc.



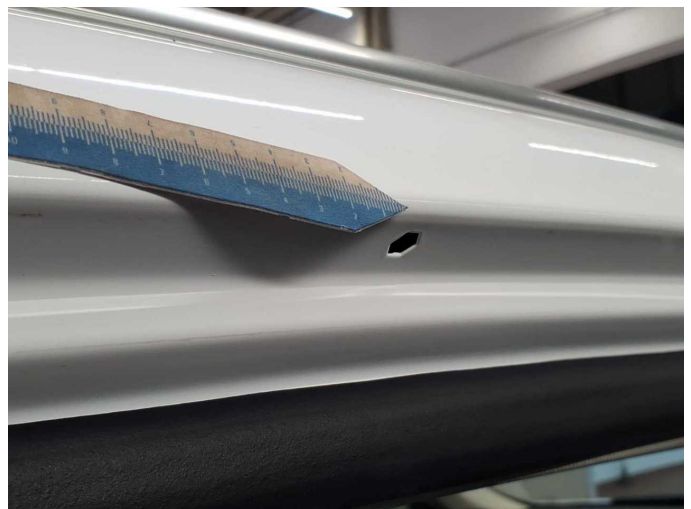
Figure 27: Misc.



Figure 28: Misc.



Damage 1: Roof: Roof rail - right side (Dichtstopfen) - Missing - Replace



Damage 1: Roof: Roof rail - right side (Dichtstopfen) - Missing - Replace



**Damage 1:** Roof: Roof rail - right side (Dichtstopfen) - Missing - Replace



**Damage 2:** Rear bumper: Rear bumper (Schutzfolie) - Missing - Replace



**Damage 2:** Rear bumper: Rear bumper (Schutzfolie) - Missing - Replace



**Damage 3:** Equipment: Tirefit filler - Expired - Replace



**Damage 4:** Side panel - rear right side: Side panel - Scratch(es) - Smart repair



**Damage 4:** Side panel - rear right side: Side panel - Scratch(es) - Smart repair



**Damage 4:** Side panel - rear right side: Side panel - Scratch(es) - Smart repair



**Damage 5:** Wheel / tyres: Alloy rim - front right side (Materialabtrag) - Scratched - Replace



**Damage 5:** Wheel / tyres: Alloy rim - front right side (Materialabtrag) - Scratched - Replace



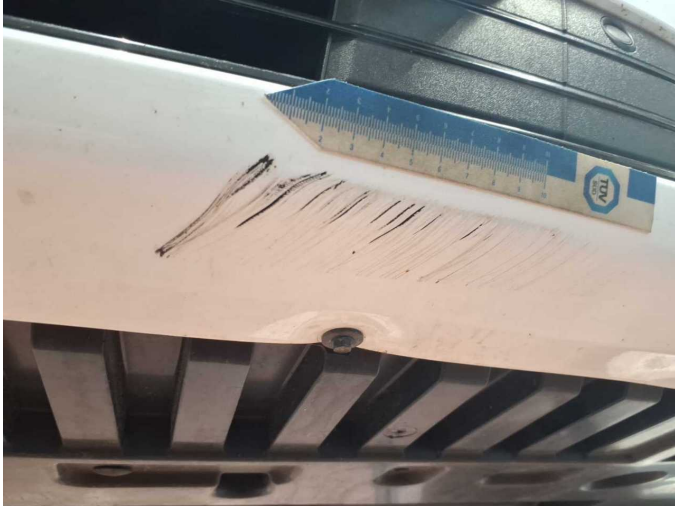
**Damage 5:** Wheel / tyres: Alloy rim - front right side (Materialabtrag) - Scratched - Replace



**Damage 6:** Front bumper: Front bumper - Scratched - Paint



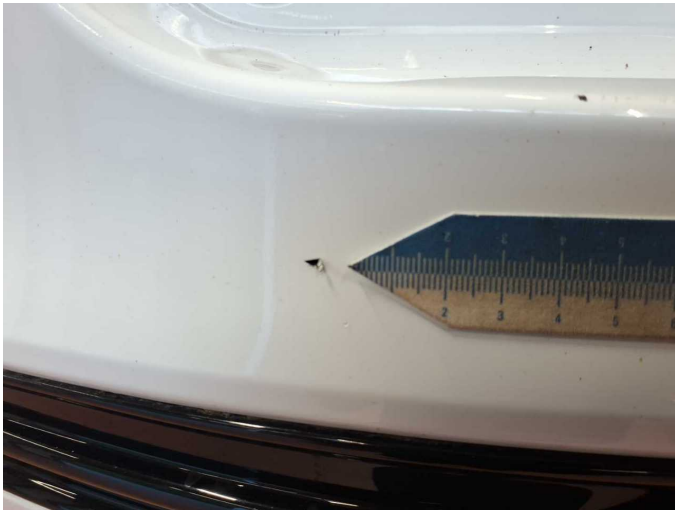
**Damage 6:** Front bumper: Front bumper - Scratched - Paint



**Damage 6:** Front bumper: Front bumper - Scratched - Paint



**Damage 7:** Rear bumper: Rear bumper - Scratch(es) - Paint



**Damage 7:** Rear bumper: Rear bumper - Scratch(es) - Paint



**Damage 7:** Rear bumper: Rear bumper - Scratch(es) - Paint



**Repainting 1:** Roof rail - right side



**Repainting 2:** Side panel - rear right side



# Wartungshistorie

(gemäß Auftraggeber Informationen)

Fahrgestellnummer: WF0FXXWPCFNY70349

Hersteller / Modell: FORD FORD Mondeo Turnier 2.0 EcoBlue Titanium

Datum	KM-Stand	Beschreibung
23.04.2026	116.346	Motoröl b. Wartung; Ölfilter ern; Regelwartungsdienst; Wartung Sonstiges
26.05.2025	92.597	AU; Motoröl b. Wartung; Ölfilter ern; Regelwartungsdienst; Wartung Sonstiges
11.12.2024	78.462	Bremse Sonstiges; Bremsklötze vorne; Bremsscheiben + Klötze v; Bremsscheiben vorne
15.08.2024	70.664	Bremsflüssigkeit; Bremsflüssigkeit ern; Kraftstofffilter ern; Luftfiltereinsatz ern; Motoröl b. Wartung; Ölfilter ern; Regelwartungsdienst; Wartung Sonstiges
17.02.2023	31.354	Motoröl b. Wartung; Ölfilter ern; Regelwartungsdienst; Wartung Sonstiges