

Expertise

Protocol number: 46293093
Order No. / Reference: 26600047
Inspection date: 1 Jul 2026

Manufacturer: Mercedes-Benz

Model: C 220 d T 9G-TRONIC AMG Line

VIN: W1KAH0EB0PF095471



Vehicle details

Manufacturer / Type / Model / Equipment

Mercedes-Benz C 220 d T 9G-TRONIC AMG Line

Vehicle Identification number	W1KAH0EB0PF095471
Mileage (Read)	127,105 km
First registration	16 Feb 2023
Number of holders	1
Next periodical technical inspection	02/2028
(Report not on hand)	

Power / Engine displacement	147 kw / 1,993 ccm
Fuel type / Cylinder	Hybrid Diesel / E / 4
Gearbox / Number of gears	Automatic / 9
Type of drive	Rear drive
Type of vehicle	Station wagon

Colour / colour code	POLARWEISS - UNILACK
Doors / Seats	5 / 5
Upholstery type	Artificial leather
Colour of upholstery	Black

Re-import	no
Vehicle with smoke odor	no
readiness to drive	Not roadworthy / moveable



Vehicle details			
Maintenance booklet / proof	digital proof / complete	Next maintenance in	187 Tag(e)
Last service on / at	11/2025 at 114,865 km		
Key is / should be	2 / 2	FZG documents	ZB#2 (B) was available (copy), ZB#1 (S) was not available.
		Letter No.	GQ141972
Previous damage / Accident	None detectable	Repainting	None detectable
Inspection conditions	sufficient	Lifting equipment / pit	yes
Test drive	Not performed	Engine function test	Performed
readiness to drive	Not roadworthy / moveable		
Manufacturer key number/ type code number	2222 / AYH 00301		
Emission standard	EURO6;WLTP;AP;PI/CI; M, N1 I	fine dust sticker	
Permitted total weight	2,400 kg	Empty weight	

Tyres

Mounted tyres				
#	Tyre size	Type of tyre	Manufacturer	Tread depth
1)	225/45 R18 95H	Winter tyres on Light alloy	Goodyear	7mm / 7mm
2)	225/45 R18 95H	Winter tyres on Light alloy	Goodyear	7mm / 7mm

Additional tyres				
#	Tyre size	Type of tyre	Manufacturer	Tread depth
1)	225/40 R19 93Y	Summer tyres on Light alloy	Goodyear	5mm / 5mm
2)	255/35 R19 96Y	Summer tyres on Light alloy	Goodyear	5mm / 5mm

Replacement				
Typ	Tyre size	Type of tyre	Manufacturer	Tread depth
	Tirefit	Expiration date 01/2028		

Legend: Tread depth information for the left tire is listed first, for the right tire it is listed second on the axle in the direction of travel.

TÜV SÜD Auto Partner GmbH
Wiesenring 2
04159 Leipzig

Inspection location
Mosolf SE & Co.KG
Faberweg 25
73230 Kirchheim unter Teck



Equipment



Standard equipment

- Airbag for driver and front passenger
- Airbag: Center airbag (Additional airbag for increased front occupant protection in the event of a side impact)
- Airbag: Sidebag for driver and front passenger (combined thorax/pelvisbag)
- Airbag: Windowbag for driver and front passenger
- Ambient lighting with 64 light colors
- AMG floor mats
- Left and right exterior mirrors are heated and electrically adjustable
- Brake system with larger brake discs on the front axle
- Brake assist, active
- black roof rails
- Double cup holder at the front
- EASY-PACK tailgate (with electric operation for opening and closing)
- Electronic Stability Program (ESP) (including Anti-lock Braking System (ABS) and Traction Control System (ASR))
- Speed Limit Assistant (The Speed Limit Assistant detects and displays speed limits.)
- Heated rear window
- Instrument panel and door sills in ARTICO man-made leather in black nappa look
- Mechanical child safety lock for the rear doors
- Rear headrests (3)
- Front headrests
- Paint finish: Solid
- Cargo area cover including EASY-PACK safety net
- LED High Performance headlights (The elements of the LED High Performance headlights: - Torch and trifunctional light guide for daytime running lights, position lights and turn signals - Multi-chamber reflector system with 4 individual reflectors each) for low beam and high beam. The elements of the rear lights in LED technology: - All light functions in full LED technology - Tail light - Brake light and parking light - Rear fog light (only on the left side) - Turn signals - Reversing light - 3rd brake light)
- Mercedes-Benz Emergency Call System (can provide a crucial time advantage in an emergency. A communication module with its own SIM card automatically triggers an emergency call upon detection of an accident, which can shorten the time until emergency services arrive. The emergency call can also be triggered manually to organize assistance.)
- Package: Storage (storage compartment with net on the left in the load compartment - double cup holder in the center console for 2 x 750 ml - elastic tension strap on the right in the load compartment - folding box under the load floor - 1 additional bag hook on the right in the load compartment - recess including storage tray on the right in the load compartment - map pockets on the backs of the front seats - reversible mat in the boot floor)
- Upholstery: ARTICO leatherette/DINAMICA microfiber
- Airbag: Automatic passenger airbag deactivation (The system automatically deactivates the passenger airbag as soon as it detects a rear-facing child seat or registers that the passenger seat is unoccupied. A transponder in the child seat is not necessary. If it detects that an adult is taking the seat, the airbag is automatically activated, reducing the risk of incorrect operation.)
- AMG sports pedal assembly made of brushed stainless steel with rubber studs
- Basic services (breakdown management, maintenance management, accident management, telediagnosis, remote vehicle diagnostics)
- Diesel particulate filter
- DYNAMIC SELECT (consisting of driving programs: Comfort, Sport, Eco mode)
- ECO start/stop function
- Chassis: Sport chassis with sport direct steering
- Electric windows (4-way)
- Transmission: 9-speed automatic, 9G-TRONIC
- rear window wiper
- Interior headliner fabric crystal grey
- ISOFIX child seat attachment with top tether in the rear
- KEYLESS-GO start function
- THERMATIC automatic climate control with 1 climate zone (controlled via the central display or the climate control unit in the center console) - Sensor system for detecting, for example, interior/ exterior temperature, solar radiation, humidity and dew point - Ventilation system consisting of: 3 center vents in the center area and 2 side vents, 2 ventilation openings each in the footwell for driver and front passenger - Fine dust filter for filtering dust, soot and pollen - Dew point sensor, continuous defroster vent under the windshield and 2 fixed defroster vents)
- Steering wheel: Multifunction sports steering wheel in Nappa leather (sporty steering wheel in a 3-twin-spoke design, flattened at the bottom - finished in Nappa leather, deeply embossed in the grip area - horizontal double spokes in high-gloss black, vertical double spokes in silver chrome - shift paddles in silver chrome - control via touch panels: left: instrument cluster, cruise control and limiter or Active Distance Assist DISTRONIC; right: multimedia system (e.g., audio volume and track selection, telephony and navigation), touch sensitivity adjustment)
- Center console in high-gloss black
- Package: Interior lighting package (Illuminated glove compartment - Lighting for wireless mobile interface or mobile phone storage - Lighting for the storage compartment in the center console or the double cupholders - Lighting for the storage compartment under the center console armrest - Two vanity lights in front - Two reading lights in the overhead control unit - Two reading lights in the interior mirror in conjunction with mirror parking - Two reading lights and interior light function in the rear grab handles - Lighting for the trunk or cargo area)



- Radio: Extended MBUX functions (personalization (profiles) and prediction functions - MBUX voice assistant "LINGUATRONIC" with natural language understanding - activation via Hey Mercedes - learning function of the MBUX voice assistant through connection with a cloud-based online dictionary, Mercedes me connect service free of charge for 3 years from activation - Wi-Fi hotspot - internet radio)
 - Radio accessories: Central display (High-resolution central display, slightly inclined towards the driver with a 24 cm (9.5") screen diagonal, with MBUX multimedia system - touch display with LCD technology)
 - Tire pressure monitoring system (TPMS)
 - Remote Services Plus (Communication module - Mercedes me services: remote vehicle status query, programming of auxiliary heating/ventilation, remote door locking and unlocking, sunroof/windows with remote locking and opening including ventilation remote control, personalization, vehicle location, vehicle tracking, geographic vehicle monitoring, parking service monitoring, finder function (Remote Vehicle Finder), notification when exceeding the driving speed, Send2Car function)
 - Electronic immobilizer
 - Decorative elements, metal structure
- Radio: MBUX (fully digital instrument display with 26 cm (10.25") color LCD display and a resolution of 1440 x 540 pixels - Bluetooth telephony / audio - WLAN hotspot)
 - Radio accessories: Digital radio (DAB)
 - Radio accessory: Communication module (LTE) for using Mercedes me connect services (The communication module with a vehicle-integrated, LTE-enabled SIM card offers you added comfort and safety. It continuously connects you to your vehicle – and the vehicle to infrastructure such as the Mercedes-Benz server or the internet. This allows you to use services such as Mercedes me connect Live Traffic Information.)
 - Wheels: 45.7 cm (18") AMG light-alloy wheels in 5-spoke design (aerodynamically optimized, painted in tremolite grey and polished with front axle 225/45 R 18 on 7.5 J x 18 H ET 40, rear axle 245/40 R 18 on 9 J x 18 H ET 58)
 - Windscreen wipers with rain sensor
 - Seats: Rear seat backrests foldable
 - Lane Keeping Assist, active
 - Cruise control
 - High-visibility vest for drivers
 - Central locking with remote control



Extra equipment

- Ambient lighting with 64 light colors (with directly illuminated light lines.)
- Black fabric headliner
- THERMATIC automatic climate control with 2 climate zones (control via the central display or the climate control unit in the center console; sensor system for detecting, for example, indoor/outdoor temperature, sunlight, humidity, and dew point; automatic recirculation (only in conjunction with navigation system); ventilation system consisting of: 3 center vents and 2 side vents; fine dust activated carbon filter for filtering dust, soot, and pollen; dew point sensor; residual heat function for efficient use of engine waste heat)
- Package: Advanced Comfort Package (Heated seats for driver and front passenger - Seat Comfort Package: - Numerous electric and manual adjustment options for the front seats to adapt to the specific body and comfort requirements of the driver and front passenger - Electro-pneumatic 4-way lumbar support and lateral support adjustment with control element on the seat - Electric seat cushion tilt adjustment - Electric height adjustment - Electric backrest adjustment - Electric seat cushion depth adjustment - Mechanical longitudinal adjustment - Mechanical headrest adjustment)
- Package: High-End Business (Mirror Package: Electrically folding exterior mirrors, automatic dimming, ambient lighting - Advanced Comfort Package: Heated seats for driver/front passenger, 4-way lumbar support, seat comfort package - Parking Package: with reversing camera - Assistance Package: Blind Spot Assist - Advanced Infotainment Package: MBUX Navigation Premium, traffic sign recognition, smartphone integration, driver display - 31.2 cm (12.3"), central display - 30.2 cm (11.9") touchscreen LCD - fuel tank with largest capacity)
- Package: Light (Adaptive Highbeam Assist - automatic switching of the high beams, camera on the inside of the windshield, detects oncoming and preceding illuminated vehicles, activated by pressing the steering wheel control lever to the high beam position)
- Upholstery: ARTICO black leatherette
- Wheels: 48.3 cm (19") AMG multi-spoke light-alloy wheels (painted black with high-sheen rim flange, front axle 225/40 R 19 on 7.5 J x 19 ET 40, rear axle 255/35 R 19 on 8.5 J x 19 ET 58, 1)
- Sunroof: Electric panoramic sunroof
- Seats: Comfort seats
- Seats: Seat climate control for driver and front passenger (including seat heating and seat ventilation)
- Extendable sun visors (with illuminated cosmetic mirror, swiveling and extendable to the side)
- TIREFIT with tire inflation compressor
- Type designation removed from trunk lid
- Heat and noise insulating acoustic glass (for windshield and front doors)
- Heat-insulating dark tinted glass
- Towbar with ESP trailer stabilization
- Chassis: AGILITY CONTROL chassis with selective damping system and lowered suspension
- Paint finish: Solid special paint
- Center console metal structure
- Package: Advanced Infotainment Package (MBUX Navigation Premium (hard drive navigation, pre-installation for Live Traffic Information), Traffic Sign Assist, Smartphone Integration (connects the mobile phone wirelessly to the multimedia system via Apple CarPlay and Android Auto), Driver Display - 31.2 cm (12.3") color LCD display, Central Display - 30.2 cm (11.9") touch display with LCD technology)
- Package: Advanced Parking Package (12 ultrasonic sensors - 360° camera - Active Parking Assist with PARKTRONIC: detects free parking spaces, assisted parking, visual and acoustic warning, display of camera and ultrasonic data in the media display - Cross traffic warning: can provide visual and acoustic warnings when reversing out of a parking space and, if necessary, automatically initiate emergency braking - Reverse maneuvering brake: can trigger a braking process - Drive-away assist)
- Package: Driving Assistance (Active Distance Assist DISTRONIC, Active Speed Limit Assist, Extended Automatic Restart on Highways, Route-Based Speed Adaptation with Traffic Jam End Function, Active Traffic Jam Assist, Active Steering Assist, Active Lane Change Assist, Active Emergency Stop Assist, Emergency Lane Function, Active Brake Assist with Vehicle, Bicycle and Pedestrian Detection; Intersection Function, Turn Function, Traffic Jam End Emergency Braking Function, Evasive Steering Assist, Active Lane Keeping Assist, Active Blind Spot Assist, Exit Warning Function)
- Package: Night (for T-Model with AMG Line exterior) (Radiator grille: diamond grille with silver pins and high-gloss black louvre (18") AMG light-alloy wheels in 5-spoke design, aerodynamically optimized, black-painted, high-sheen finish, with front axle 225/45 R18 on 7.5Jx18 ET40, rear axle 245/40 R18 on 8Jx18 ET52 AMG front apron with high-gloss black wing trim. Rear bumper with high-gloss black wing trim. Belt trim strip and window surrounds in high-gloss black. Exterior mirror housings in high-gloss black. Heat-insulating dark-tinted rear glass (from the B-pillar). Roof rails in black.)
- Seats: Multi-contour seats for driver and front passenger (driver and front passenger seats fully electrically adjustable via the switches in the door control panel - Electro-pneumatic 4-way lumbar support - Massage via 8 inflatable air chambers in the lower seat back and side bolsters as well as 7 zones - Deep tissue massage via 4 vibration elements in the seat cushion (driver's side only) - 6 massage programs for the driver, 4 massage programs for the front passenger)



Brief expert findings

Documents submitted	At the time of the inspection, the vehicle registration certificate Part 2 (title) was available, but the vehicle registration certificate Part 1 (document) was not. (Copy)
VIN comparison	The vehicle identification number (VIN) was read from the vehicle and its conformity with the submitted documents was confirmed by the undersigned during the inspection.
Inspection	The inspection conditions were sufficient for the assessment of the vehicle. Lifting equipment and/or a pit were available for examining the vehicle.
Test drive	No test drive/shunting maneuver was carried out during the inspection of the vehicle.
Engine function test	An engine test run was performed.
readiness to drive	The vehicle was not capable of driving under its own power at the time of inspection, but can be moved on its own axle with the aid of assistance.

Value reducing factors

No.	Component group	Description
1	Body	Body (Flugrost) - Conditioning
2	2nd wheel set	3 alloy rims - Scratch(es) - Loss in value
3	Boot lid / rear door	Boot lid - dent(s) - Repair and paint
4	Front bumper	Front bumper - Scratch(es) - Paint

Wear and tear

No.	Component group	Description
1	Vehicle glazing	Windscreen - Stone chips - No deduction
2	Boot lid / rear door	Boot lid - Glued / labelled - No deduction
3	Wheel / tyres	Tyre - front right side - Damaged - No deduction
4	Wheel / tyres	Alloy rim - front right side - Scratch(es) - No deduction

The vehicle shows signs of wear and tear commensurate with its age and use.

Order/Scope of Order

An order was placed to prepare a sales report for the described vehicle. This report includes the following:

- Description of key vehicle information
- Documentation of equipment features
(*Delivery by third-party service providers*)
- Documentation of damage, defects, missing parts
- Documentation of prior damage, unrepaired prior damage, repainting
- A brief visual or functional inspection of the equipment details, if possible.
(*Functional testing of driver assistance systems is not included in the scope of services!*)
- a photographic documentation of the vehicle



Basis for the order

This product is based on the guidelines for vehicle returns and valuations published by Alphabet Fleet GmbH. The expert makes the specific findings in each individual case objectively, within the framework of the prescribed standards, based on their own expertise.

The vehicle inspection takes place in a fully assembled, unassembled state.

Damage or defects that can only be detected during disassembly/diagnostic work or through further investigation remain within the realm of prognostic risk. An increased risk exists due to concealed defects caused by fraudulent misrepresentation and which were not identifiable by the expert.

Damage or defects resulting from normal use or wear and tear of the vehicle will be accepted in accordance with the applicable standard.

There was no explicit identification or monetary consideration of the expected features within the product.

Features which, in their nature and extent, slightly exceed normal use but do not constitute unacceptable damage, will be documented and indicated as signs of wear, if applicable.

Damage or defects that, according to the applicable standard, can no longer be attributed to normal use or wear and tear are listed under "Value Reducing Factors" in the product description.

Depending on the product specification, a monetary ID can be provided. If this takes place, the costs can be 100% or pro rata depending on the vehicle's age and mileage.

Previous damages

No apparent prior damage that had been repaired could be found on the vehicle.

Comments

- Für den montierten Radsatz wurde kein Nachweis erbracht.
- Winterradsatz ist kein Bestandteil des Auslieferungsumfangs.



Figure 1: Diagonal front (left)



Figure 2: Diagonal front (right)



Figure 3: Diagonal rear (left)



Figure 4: Diagonal rear (right)



Figure 5: Interior - front



Figure 6: Interior - rear



Figure 7: Instrument cluster



Figure 8: Instrument panel



Figure 9: Interior 360° view



Figure 10: Cargo area



Figure 11: VIN



Figure 12: Mounted tyres

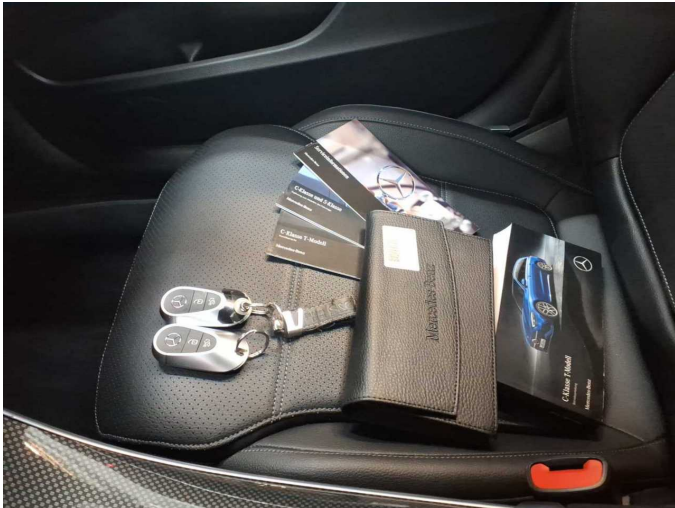


Figure 13: Documents



Figure 14: Documents



Figure 15: Additional tyres

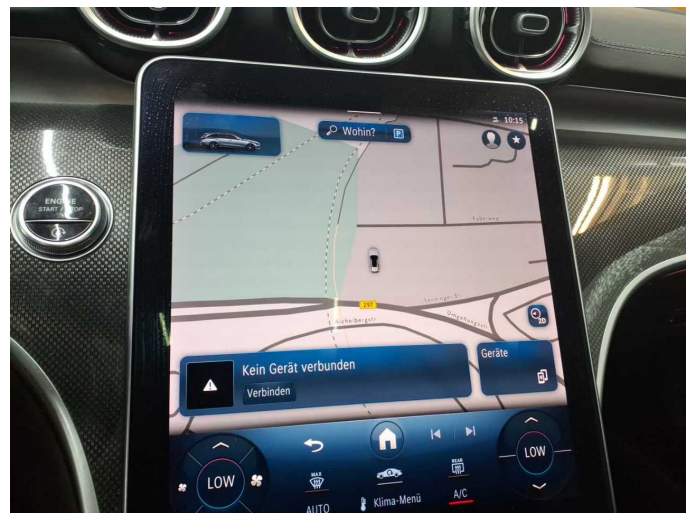


Figure 16: Navigation



Figure 17: Misc.

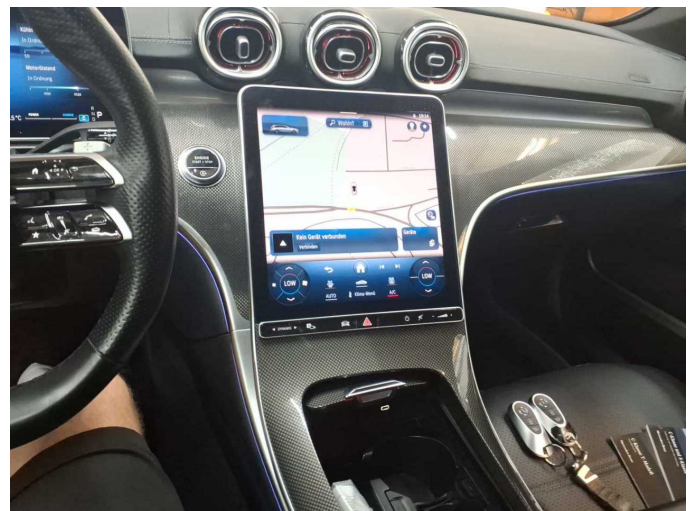


Figure 18: Misc.



Figure 19: Misc.

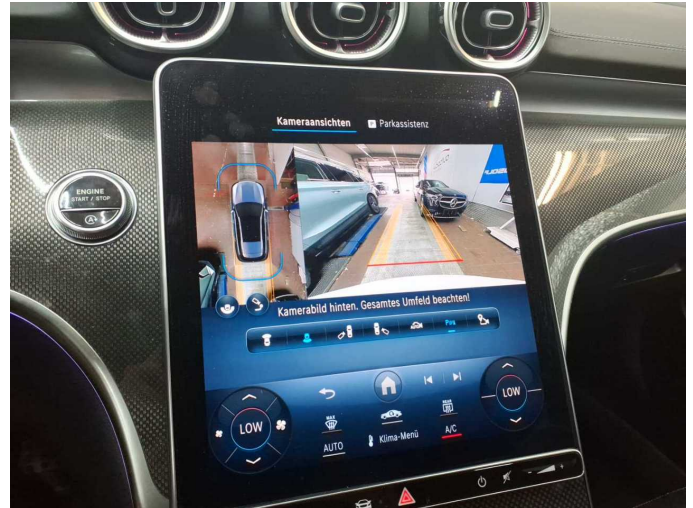


Figure 20: Misc.



Figure 21: Misc.

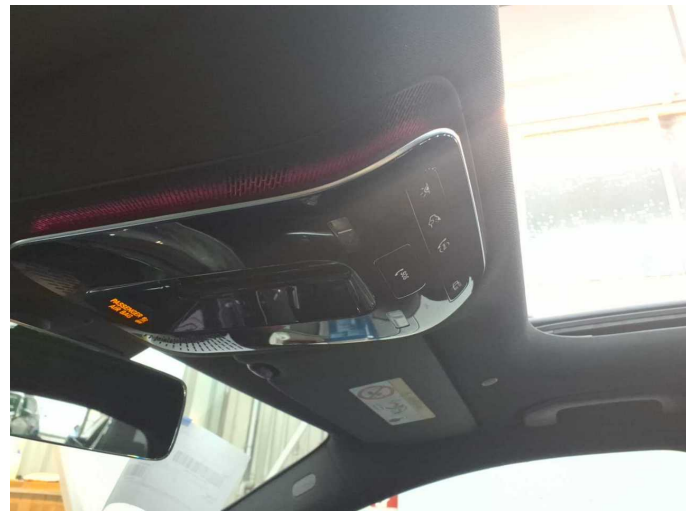


Figure 22: Misc.



Figure 23: Misc.



Figure 24: Misc.



Figure 25: Misc.



Figure 26: Misc.



Figure 27: Misc.



Figure 28: Misc.

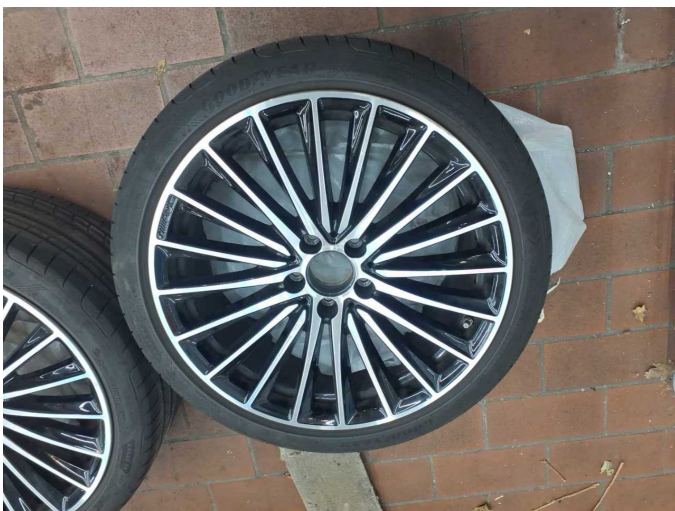


Figure 29: Misc.

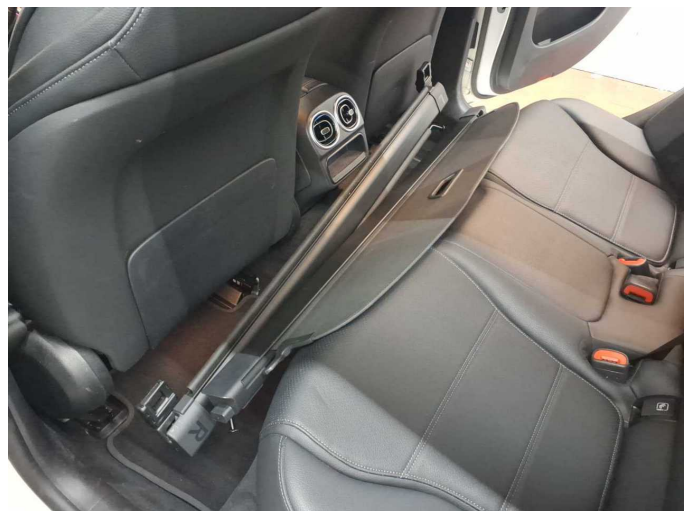


Figure 30: Misc.



Figure 31: Misc.



Figure 32: Misc.



Figure 33: Misc.



Figure 34: Misc.



Figure 35: Misc.



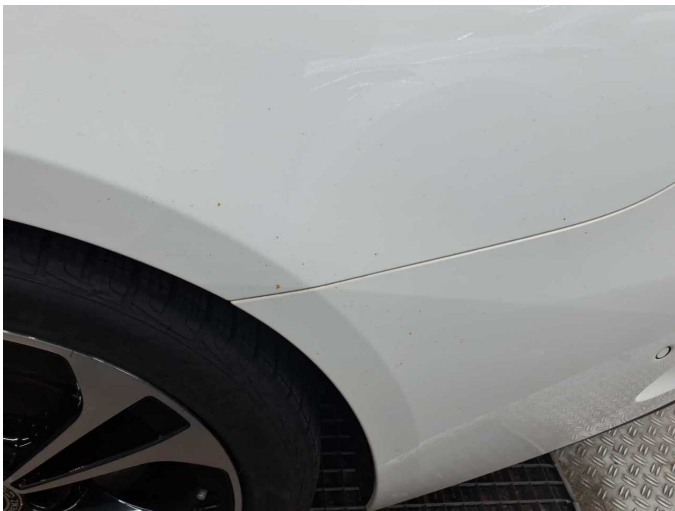
Figure 36: Misc.



Damage 1: Body: Body (Flugrost) - Conditioning



Damage 1: Body: Body (Flugrost) - Conditioning



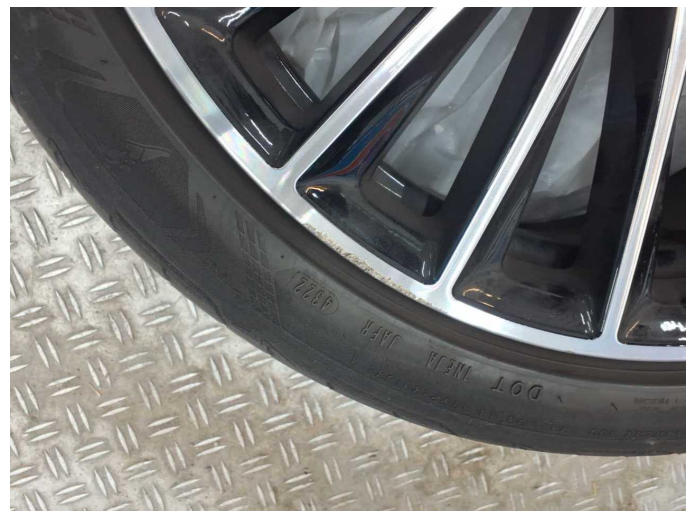
Damage 1: Body: Body (Flugrost) - Conditioning



Damage 1: Body: Body (Flugrost) - Conditioning



Damage 2: 2nd wheel set: 3 alloy rims - Scratch(es) - Loss in value



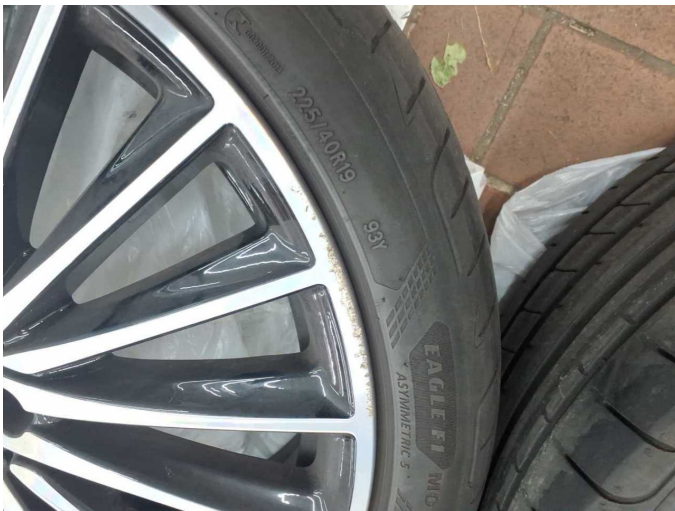
Damage 2: 2nd wheel set: 3 alloy rims - Scratch(es) - Loss in value



Damage 2: 2nd wheel set: 3 alloy rims - Scratch(es) - Loss in value



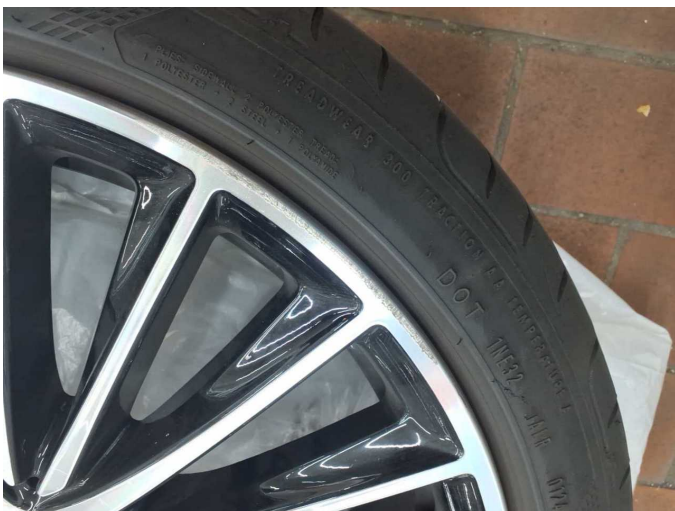
Damage 2: 2nd wheel set: 3 alloy rims - Scratch(es) - Loss in value



Damage 2: 2nd wheel set: 3 alloy rims - Scratch(es) - Loss in value



Damage 2: 2nd wheel set: 3 alloy rims - Scratch(es) - Loss in value



Damage 2: 2nd wheel set: 3 alloy rims - Scratch(es) - Loss in value



Damage 3: Boot lid / rear door: Boot lid - dent(s) - Repair and paint



Damage 3: Boot lid / rear door: Boot lid - dent(s) - Repair and paint



Damage 3: Boot lid / rear door: Boot lid - dent(s) - Repair and paint



Damage 4: Front bumper: Front bumper - Scratch(es) - Paint



Damage 4: Front bumper: Front bumper - Scratch(es) - Paint



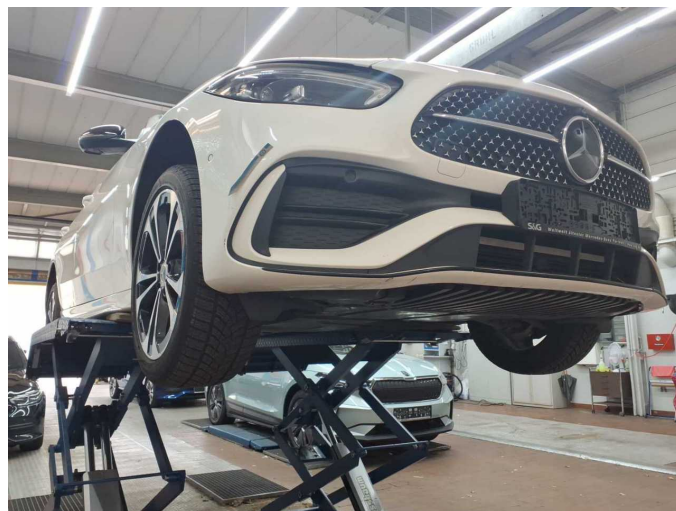
Damage 4: Front bumper: Front bumper - Scratch(es) - Paint



Damage 4: Front bumper: Front bumper - Scratch(es) - Paint



Damage 4: Front bumper: Front bumper - Scratch(es) - Paint



Damage 4: Front bumper: Front bumper - Scratch(es) - Paint



Wartungshistorie

(gemäß Auftraggeber Informationen)

Fahrgestellnummer: W1KAH0EB0PF095471
Hersteller / Modell: MERCEDES-BENZ MERCEDES-BENZ C 220 d T 9G-TRONIC
AMG Line

Datum	KM-Stand	Beschreibung
10.02.2026	123.896	AU
14.11.2025	114.865	Bremsscheiben vorne; Regelwartungsdienst
17.04.2025	92.324	Regelwartungsdienst
14.10.2024	70.218	Bremsklötze vorne; Regelwartungsdienst
15.03.2024	46.596	Regelwartungsdienst
25.09.2023	22.428	Regelwartungsdienst