

## Expertise

Protocol number: 46283700  
Order No. / Reference: 26444195  
Inspection date: 1 Jul 2026

Manufacturer: Mercedes-Benz

Model: GLC 220 d 4Matic 9G-TRONIC AMG Line

VIN: W1N2539151G030762



### Vehicle details

#### Manufacturer / Type / Model / Equipment

Mercedes-Benz GLC 220 d 4Matic 9G-TRONIC AMG Line

**Vehicle Identification number** W1N2539151G030762

**Mileage (Read)** 147,453 km

**First registration** 8 Mar 2022

**Number of holders** 1

**Next periodical technical inspection** 03/2027  
(Report on hand)

**Power / Engine displacement** 143 kw / 1,950 ccm

**Fuel type / Cylinder** Diesel / 4

**Gearbox / Number of gears** Automatic / 9

**Type of drive** All-wheel drive

**Type of vehicle** SUV

**Colour / colour code** Selenitgrau metallic

**Doors / Seats** 5 / 5

**Upholstery type** Alcantara / Leather

**Colour of upholstery** Black



## Vehicle details

<b>Maintenance booklet / proof</b>	digital proof / complete	<b>Next maintenance in</b>	174 Tag(e)
<b>Last service on / at</b>	12/2025 at 130,393 km		
<b>Key is / should be</b>	2 / 2	<b>FZG documents</b>	ZB#2 (B) was available (copy), ZB#1 (S) was not available.
		<b>Letter No.</b>	GF760591
<b>Previous damage / Accident</b>	Detectable	<b>Repainting</b>	Detectable
<b>Inspection conditions</b>	sufficient	<b>Lifting equipment / pit</b>	No
<b>Test drive</b>	Not performed	<b>Engine function test</b>	Performed
<b>Manufacturer key number/ type code number</b>	2222 / AKG 00229		
<b>Emission standard</b>	EURO6;WLTP;AP;PI/CI; M, N1 I	<b>fine dust sticker</b>	
<b>Permitted total weight</b>	2,500 kg	<b>Empty weight</b>	

## Tyres

### Mounted tyres

#	Tyre size	Type of tyre	Manufacturer	Tread depth
1)	235/55 R19 101V	Summer tyres on Light alloy	Pirelli	7mm / 7mm
2)	235/55 R19 101V	Summer tyres on Light alloy	Pirelli	7mm / 7mm

### Additional tyres

#	Tyre size	Type of tyre	Manufacturer	Tread depth
1)	235/65 R17 104H	Winter tyres on Light alloy	Pirelli	4mm / 5mm
2)	235/65 R17 104H	Winter tyres on Light alloy	Pirelli	4mm / 4mm

**Legend: Tread depth information for the left tire is listed first, for the right tire it is listed second on the axle in the direction of travel.**



## Equipment

### Standard equipment

- Airbag for driver and front passenger
  - Airbag: Side airbag for driver and front passenger
  - Active Brake Assist
  - Anti-lock braking system (ABS)
  - Automatic passenger airbag deactivation
  - On-board computer
  - Roof rails in polished aluminum
  - Tachometer
  - DYNAMIC SELECT
  - Electronic Stability Program (ESP)
  - Electric windows (4-way)
  - Black floor mats with AMG lettering
  - Rear window heated
  - Black fabric headliner
  - Climate: THERMATIC automatic climate control with 2 climate zones
  - Communication module (LTE) for the use of Mercedes me connect services
  - Paint finish: Solid
  - Steering wheel: Multifunction sports steering wheel in 3-spoke design in black Nappa leather
  - Steering: Sport direct steering
  - Navigation accessories: Extended MBUX functions
  - Package: Interior light
  - Upholstery: ARTICO leatherette/DINAMICA microfiber
  - Radio accessories: Digital radio
  - Tire pressure monitoring system (TPMS)
  - Windscreen wipers with rain sensor
  - Seat: Front sports seats
  - Seats: i-Size child restraint system on the outer rear seats
  - Cruise control
  - Immobiliser
  - Decorative elements: black piano lacquer finish/light longitudinally brushed aluminum
- Airbag: Kneebag for driver
  - Airbag: Windowbags
  - 4MATIC all-wheel drive
  - ATTENTION ASSIST
  - Heated exterior mirrors (left and right), electrically adjustable from inside
  - Diesel particulate filter
  - Third brake light in LED technology
  - EASY-Pack cargo cover (removable)
  - Driving light assistant
  - electric parking brake
  - Transmission: 9G-TRONIC
  - rear window wiper
  - KEYLESS-GO start function
  - Remote trunk lid release
  - Instrument cluster with 2 tubular round instruments, 13.97 cm (5.5") multifunction display
  - Headrests 5-way
  - LED High Performance Headlights
  - Steering column mechanically adjustable in height and length
  - Mercedes-Benz emergency call system
  - Package: Storage
  - Package: OFF-ROAD Exterior
  - Radio: MBUX multimedia system
  - Radio accessories: Touchpad
  - Remote Services Plus
  - Power steering
  - Seats: Rear seat backrests foldable
  - Seats: Front seats electrically adjustable
  - High-visibility vest for drivers
  - Central locking



### Extra equipment

- Ambient lighting (Design the interior according to your personal preference or current mood. With a total of 64 colors, the ambient lighting offers almost unlimited possibilities for lighting design and has the right color for every situation. Illuminated door sills on the driver and passenger sides.)
- Climate: THERMOTRONIC automatic climate control with 3 climate zones (The THERMOTRONIC automatic climate control with 3 climate zones and 3 climate styles allows for a personalized comfort climate on board. Driver and front passenger can each adjust the temperature, air distribution and climate style according to their personal needs. The third climate zone is located in the rear with separately adjustable temperature and airflow.)
- Package: Business (Advanced Parking Package: Active Parking Assist PARKTRONIC with reversing camera; Advanced Infotainment Package: Media display with touch operation, smartphone integration - Apple CarPlay and Android Auto, connectivity package navigation, traffic sign assist; Comfort Package: Heated seats for driver and front passenger, seat comfort package - electric and manual adjustment options for the front seats; larger fuel tank capacity)
- Panoramic sunroof
- Wheels: 43.2 cm (17") alloy wheels, 4-way 5-twin-spoke design (tremolite grey painted and polished with 235/65 R17 tires on 7.5 J x 17 ET 36 rims)
- Wheels: 48.3 cm (19") light alloy wheels, 4-way in multi-twin-spoke design (high-gloss black painted and polished with 235/55 R 19 on 8 J x 19 ET 38)
- Partition net for luggage compartment separation (and occupant protection)
- KEYLESS-GO (Your KEYLESS-GO vehicle key can stay in your pocket; you don't need to take it out of your hand. Thanks to the stored access and driving authorization, the vehicle recognizes its owner. Simply grasp the door handle, open the door, get in, and drive off – KEYLESS-GO is always a convenient experience.)
- Paint finish: Metallic
- Package: Advanced Light (LED High Performance headlights and adaptive LED taillights, Adaptive Highbeam Assist)
- Package: Assistance (Mirror package: Electrically folding exterior mirrors, lowering right exterior mirror, automatic dimming function; Lane package: Active lane keeping assist, blind spot assist)
- Package: High-end infotainment (Media display with touch operation, smartphone integration: Apple CarPlay and Android Auto, connectivity package, navigation, traffic sign assistant: thanks to intelligent linking of camera and map data, it can recognize not only speed limits, no-overtaking zones and their cancellation, but also MBUX augmented reality for navigation, fully digital instrument display, wireless charging system for mobile devices in the storage compartment)
- Radio accessories: Advanced sound system (9 speakers and 225 watts system power. The sound system enhances your driving pleasure acoustically. The speaker system, precisely tuned to the interior, offers dynamic music playback.)
- Heated windshield washer system
- Seats: Heated rear seats
- Heat-insulating dark tinted glass all around from the B-pillar back

### Brief expert findings

Documents submitted	At the time of the inspection, the vehicle registration certificate Part 2 (title) was available, but the vehicle registration certificate Part 1 (document) was not. (Copy)
VIN comparison	The vehicle identification number (VIN) was read from the vehicle and its conformity with the submitted documents was confirmed by the undersigned during the inspection.
Inspection	The inspection conditions were sufficient for the assessment of the vehicle. No lifting equipment or pit was available for inspecting the vehicle. Therefore, inspection of the vehicle's underside was only possible to a limited extent.
Test drive	No test drive/shunting maneuver was carried out during the inspection of the vehicle.
Engine function test	An engine test run was performed.

### Value reducing factors

No.	Component group	Description
1	Rear bumper	Rear bumper - Scratched - Paint
2	Boot lid / rear door	Boot lid - Dent / paintcoat damage - Repair and paint
3	Side panel - rear left side	Side panel - Scratch(es) - Paint
4	Front bumper	Front bumper (+Spoiler+Radlauf) - Damaged - repair according to calculation



## Wear and tear

No.	Component group	Description
1	Bonnet	Bonnet - Stone chips - No deduction
2	Vehicle glazing	Windscreen - Stone chips - No deduction
3	Door - front right side	Door - dent(s) - Smooth repair work

The vehicle shows signs of wear and tear commensurate with its age and use.

## Previous damages

No.	Previous damage	Extent of damage (Net)
1	Side right, Provided by user / customer, from 3 Nov 2023	174,23 €
2	Side - left, Provided by user / customer, from 11 Nov 2025	707,86 €
3	Roof, Front, Provided by user / customer, from 26 Aug 2023	2.257,74 €
4	Side - left, Provided by user / customer, from 17 Jan 2024	2.942,16 €

## Repainting

No.	Repainting
1	Mudguard - left side
2	Door - rear left side

## Paint coat thickness measurement

Mudguard - left side	145 µm	Door - rear left side	165 µm
----------------------	--------	-----------------------	--------

## Order/Scope of Order

An order was placed to prepare a sales report for the described vehicle. This report includes the following:

- Description of key vehicle information
- Documentation of equipment features  
*(Delivery by third-party service providers)*
- Documentation of damage, defects, missing parts
- Documentation of prior damage, unrepaired prior damage, repainting
- A brief visual or functional inspection of the equipment details, if possible.  
*(Functional testing of driver assistance systems is not included in the scope of services!)*
- a photographic documentation of the vehicle



## Basis for the order

This product is based on the guidelines for vehicle returns and valuations published by Alphabet Fleet GmbH. The expert makes the specific findings in each individual case objectively, within the framework of the prescribed standards, based on their own expertise.

The vehicle inspection takes place in a fully assembled, unassembled state.

Damage or defects that can only be detected during disassembly/diagnostic work or through further investigation remain within the realm of prognostic risk. An increased risk exists due to concealed defects caused by fraudulent misrepresentation and which were not identifiable by the expert.

Damage or defects resulting from normal use or wear and tear of the vehicle will be accepted in accordance with the applicable standard.

There was no explicit identification or monetary consideration of the expected features within the product.

Features which, in their nature and extent, slightly exceed normal use but do not constitute unacceptable damage, will be documented and indicated as signs of wear, if applicable.

Damage or defects that, according to the applicable standard, can no longer be attributed to normal use or wear and tear are listed under "Value Reducing Factors" in the product description.

Depending on the product specification, a monetary ID can be provided. If this takes place, the costs can be 100% d or pro rata depending on the vehicle's age and mileage.

## Previous damages

According to available information previous damages were repaired at the vehicle. Traces of repairs, which allow conclusions about the area of repair, were not recognizable during the inspection.

## Comments

- Die Unterbodenbesichtigung war nur ebenerdig und eingeschränkt möglich.
- Mehrkosten möglich .

Die beigefügte Reparaturkostenkalkulation wurde nach bestem Wissen und Gewissen unter eingeschränkten Besichtigungsbedingung im demontagefreien Zustand erstellt. Es können aufgrund verdeckter Beschädigung, Mehrkosten und somit Abweichung der für die Stoßstange ausgewiesenen Reparaturkosten nicht ausgeschlossen werden.



Figure 1: Diagonal front (left)



Figure 2: Diagonal front (right)



Figure 3: Diagonal rear (left)



Figure 4: Diagonal rear (right)

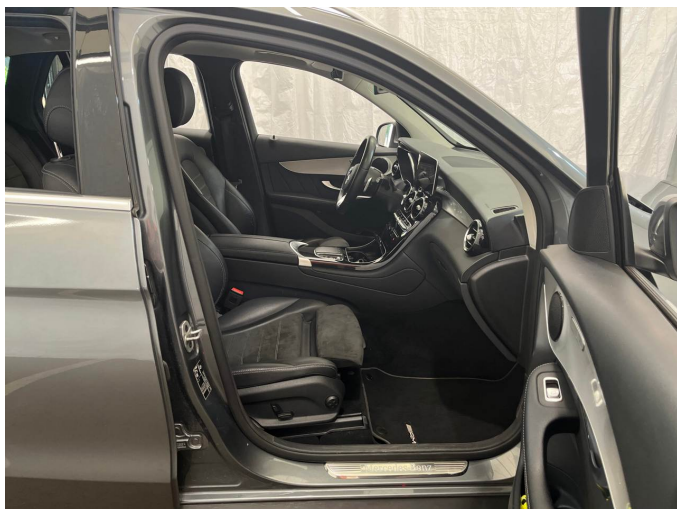


Figure 5: Interior - front



Figure 6: Interior - rear



Figure 7: Instrument cluster



Figure 8: Instrument panel



Figure 9: Interior 360° view



Figure 10: Cargo area



Figure 11: VIN

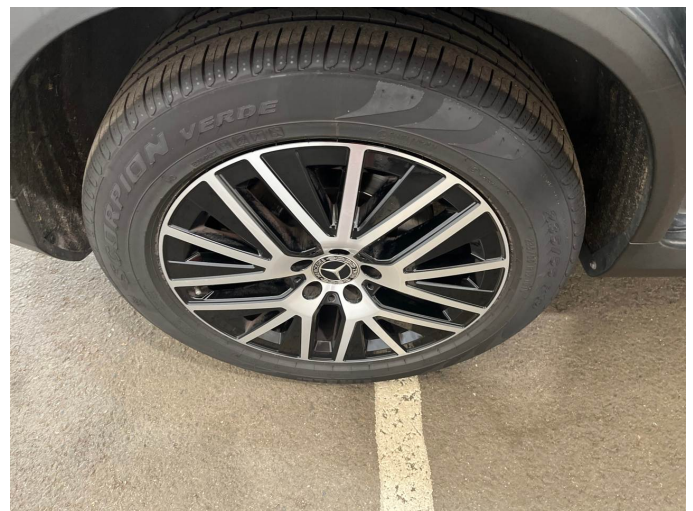


Figure 12: Mounted tyres



Figure 13: Documents



Figure 14: Documents



Figure 15: Documents



Figure 16: Additional tyres



Figure 17: Navigation



Figure 18: Misc.



Figure 19: Misc.



Figure 20: Misc.



Figure 21: Misc.



Figure 22: Misc.



Figure 23: Misc.



Figure 24: Misc.



Figure 25: Misc.



Figure 26: Misc.



Figure 27: Misc.



Figure 28: Misc.

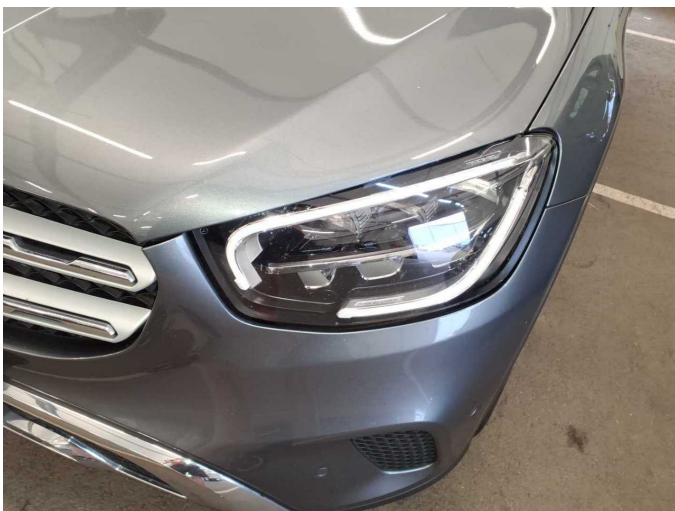


Figure 29: Misc.



Figure 30: Misc.



Figure 31: Misc.



Figure 32: Misc.



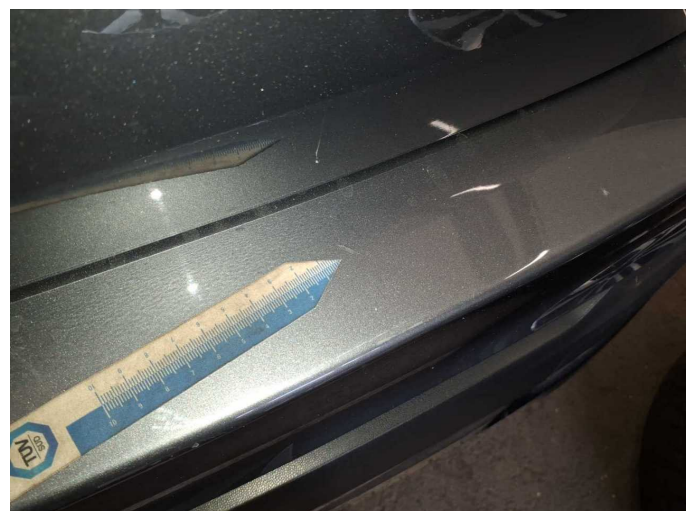
Figure 33: Misc.



Figure 34: Misc.



Figure 35: Misc.



Damage 1: Rear bumper: Rear bumper - Scratched - Paint



**Damage 1:** Rear bumper: Rear bumper - Scratched - Paint



**Damage 1:** Rear bumper: Rear bumper - Scratched - Paint



**Damage 1:** Rear bumper: Rear bumper - Scratched - Paint



**Damage 1:** Rear bumper: Rear bumper - Scratched - Paint



**Damage 1:** Rear bumper: Rear bumper - Scratched - Paint



**Damage 2:** Boot lid / rear door: Boot lid - Dent / paintcoat damage - Repair and paint



**Damage 2:** Boot lid / rear door: Boot lid - Dent / paintcoat damage - Repair and paint



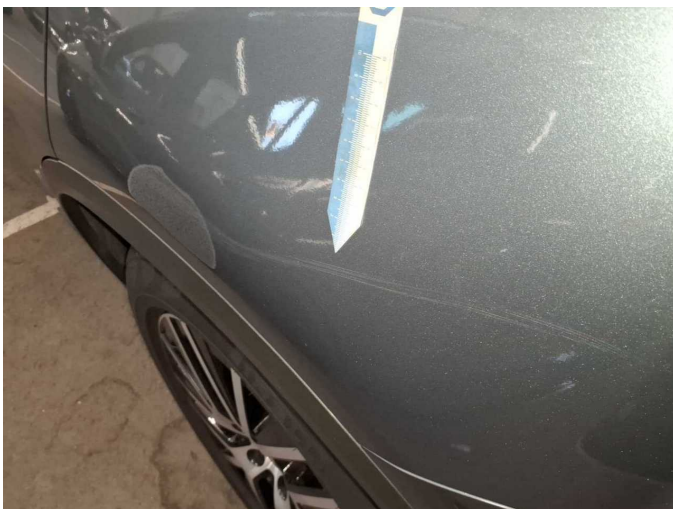
**Damage 2:** Boot lid / rear door: Boot lid - Dent / paintcoat damage - Repair and paint



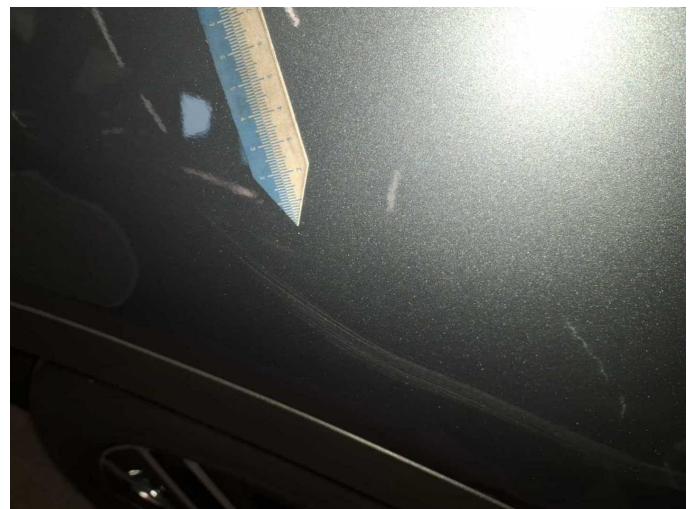
**Damage 2:** Boot lid / rear door: Boot lid - Dent / paintcoat damage - Repair and paint



**Damage 2:** Boot lid / rear door: Boot lid - Dent / paintcoat damage - Repair and paint



**Damage 3:** Side panel - rear left side: Side panel - Scratch(es) - Paint



**Damage 3:** Side panel - rear left side: Side panel - Scratch(es) - Paint



**Damage 3:** Side panel - rear left side: Side panel - Scratch(es) - Paint



**Damage 3:** Side panel - rear left side: Side panel - Scratch(es) - Paint



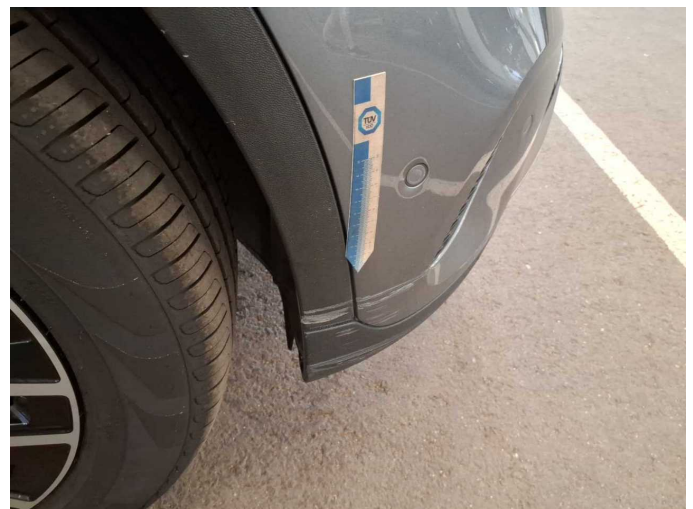
**Damage 4:** Front bumper: Front bumper (+Spoiler+Radlauf) - Damaged - repair according to calculation



**Damage 4:** Front bumper: Front bumper (+Spoiler+Radlauf) - Damaged - repair according to calculation



**Damage 4:** Front bumper: Front bumper (+Spoiler+Radlauf) - Damaged - repair according to calculation



**Damage 4:** Front bumper: Front bumper (+Spoiler+Radlauf) - Damaged - repair according to calculation



**Damage 4:** Front bumper: Front bumper (+Spoiler+Radlauf) - Damaged - repair according to calculation



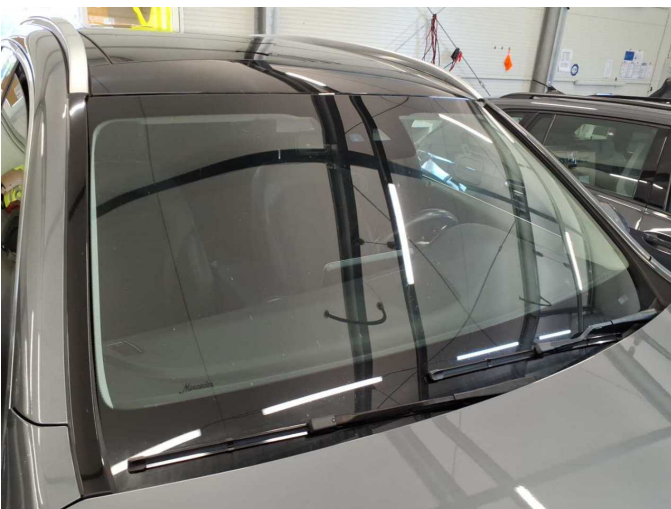
**Damage 4:** Front bumper: Front bumper (+Spoiler+Radlauf) - Damaged - repair according to calculation



**Wear and tear 1:** Bonnet: Bonnet - Stone chips - No deduction



**Wear and tear 1:** Bonnet: Bonnet - Stone chips - No deduction



**Wear and tear 2:** Vehicle glazing: Windscreen - Stone chips - No deduction



**Wear and tear 3:** Door - front right side: Door - dent(s) - Smooth repair work



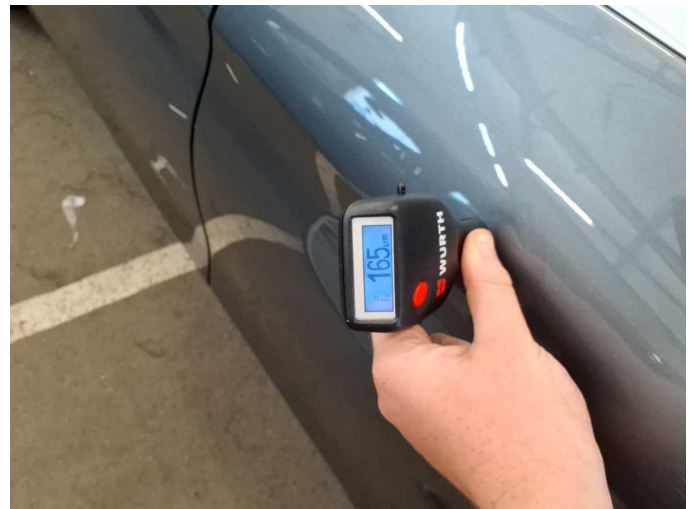
**Wear and tear 3:** Door - front right side: Door - dent(s) - Smooth repair work



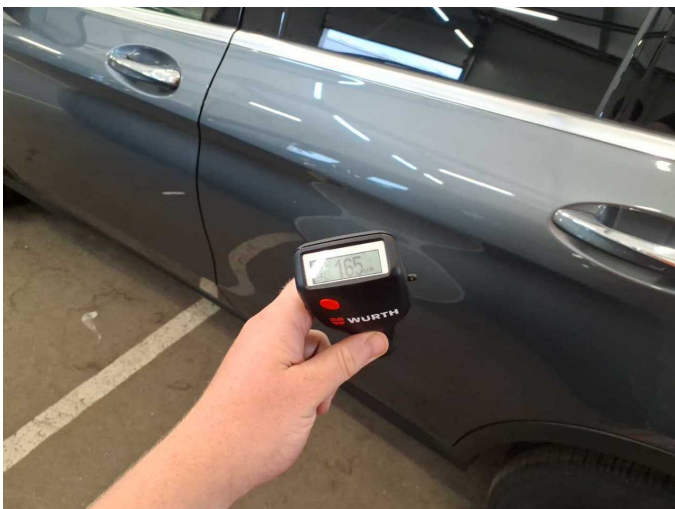
**Repainting 1:** Mudguard - left side



**Repainting 1:** Mudguard - left side



**Repainting 2:** Door - rear left side



**Repainting 2:** Door - rear left side



# Wartungshistorie

(gemäß Auftraggeber Informationen)

Fahrgestellnummer: W1N2539151G030762

Hersteller / Modell: MERCEDES-BENZ MB GLC 220 d 4Matic 9G-TRONIC AMG Line

Datum	KM-Stand	Beschreibung
22.12.2025	130.393	Regelwartungsdienst
26.03.2025	105.936	AU
25.03.2025	105.930	Bremsinspektion vo + hi; Regelwartungsdienst
17.05.2024	77.709	Regelwartungsdienst
31.08.2023	51.750	Bremsklötze hinten; Regelwartungsdienst
15.12.2022	26.403	Regelwartungsdienst