

Expertise

Protocol number: 45949477
Order No. / Reference: 26482979
Inspection date: 15 Jun 2026

Manufacturer: Skoda

Model: Kodiaq 2.0 TDI 4x4 DSG L&K

VIN: TMBLN7NS6P8524587



Vehicle details

Manufacturer / Type / Model / Equipment

Skoda Kodiaq 2.0 TDI 4x4 DSG L&K

Vehicle Identification number TMBLN7NS6P8524587

Mileage (Read) 117,104 km

First registration 15 May 2023

Number of holders 1

Next periodical technical inspection 05/2026
(Report not on hand)

Power / Engine displacement 147 kw / 1,968 ccm

Fuel type / Cylinder Diesel / 4

Gearbox / Number of gears Automatic / 7

Type of drive All-wheel drive

Type of vehicle SUV

Colour / colour code Black Magic Pearlescent
(F9R)

Doors / Seats 5 / 5

Upholstery type Leather

Colour of upholstery Black

Re-import no



Vehicle details

Maintenance booklet / proof	digital proof / complete	Next maintenance in	3,200 km
Last service on / at	09/2025 at 90,230 km		
Key is / should be	2 / 2	FZG documents	ZB#2 (B) was available (copy), ZB#1 (S) was not available.
		Letter No.	GQ571256
Previous damage / Accident	None detectable	Repainting	None detectable
Inspection conditions	sufficient	Lifting equipment / pit	yes
Test drive	Not performed	Engine function test	Performed
Manufacturer key number/ type code number	8004 / AVW 00643		
Emission standard	EURO6;WLTP;AP;PI/CI; M, N1 I	fine dust sticker	
Permitted total weight	2,410 kg	Empty weight	

Tyres

Mounted tyres

#	Tyre size	Type of tyre	Manufacturer	Tread depth
1)	235/45 R20 100Y	Summer tyres on Light alloy	Pirelli	7mm / 7mm
2)	235/45 R20 100Y	Summer tyres on Light alloy	Pirelli	7mm / 7mm

Additional tyres

#	Tyre size	Type of tyre	Manufacturer	Tread depth
1)	235/55 R18 104H	Winter tyres on Light alloy	Goodyear	6mm / 6mm
2)	235/55 R18 104H	Winter tyres on Light alloy	Goodyear	6mm / 6mm

Replacement

Typ	Tyre size	Type of tyre	Manufacturer	Tread depth
N	145/85 R18 101M	Summer tyres on Steel	Sonstige	8 mm

Legend: Tread depth information for the left tire is listed first, for the right tire it is listed second on the axle in the direction of travel.



Equipment

Equipment

- Klimaautomatik

|



Standard equipment

- 12V socket in the center console and in the trunk
- Storage compartments behind the wheel arches in the trunk
- front aero windshield wipers
- Airbag, driver's knee airbag
- Airbag, front side airbags
- Permanent all-wheel drive
- Traction control (ASR)
- Electrically folding exterior mirrors including interior and driver's side mirrors with automatic dimming
- Hill start assist
- Care Connect: Proactive services (10-year term)
- Roof rails, anodized
- Diesel particulate filter
- Tachometer
- Easy Start (start-stop button)
- Electric tailgate operation
- Electronic transverse differential lock (XDS+)
- Driving light assistant and rain sensor
- High Beam Assist (Light Assist)
- front and rear floor mats
- rear footwell lighting
- Closed storage compartment on the driver's side
- Transmission: 7-speed dual-clutch transmission (DSG)
- Illuminated glove compartment
- Kessy - keyless entry and start-stop system
- Climatronic air conditioning (2-zone)
- Front and rear headrests are height-adjustable.
- LED ambient lighting
- LED taillights in crystal glass look with animated turn signals
- Reading lights at the front of the headliner
- Rear center armrest with cup holders
- Engine drag torque control (MSR)
- Front and rear parking sensors
- Upholstery: L&K leather interior with ventilated front seats
- Wheel arch cover
- Radio accessories: CANTON sound system
- Radio accessories: Wireless SmartLink
- Wheels: 18" steel spare wheel, space-saving
- Heated windshield washer nozzles, front
- Headlights washer / wiper system
- Kodiaq seat belts
- Seats: Adjustable lumbar support in the front seats
- Seats: Height-adjustable front seats
- Seats: Remote release of the rear seat backrests (2nd row) in the boot
- Speed limiter
- Lane Assist, Blind Spot Detection and Parking Assist
- Telephone: Convenient hands-free telephone system including phone box
- Variable fastening concept in the trunk
- Storage compartment on the left wheel arch
- Adaptive Cruise Control (ACC) (control range up to 210 km/h)
- Airbag, driver and passenger
- Airbag, head airbags
- Allergen filter
- Anti-lock braking system (ABS)
- Dashboard in black / black, door trim in black
- Electrically adjustable and heated exterior mirrors with integrated side indicators
- Hydraulic brake assist (HBA)
- Grey headliner
- Decorative inlay Piano-Black L&K
- Digital Cockpit (8")
- Third brake light
- eCall
- Electronic parking brake including auto-hold function
- ESC Electronic Stability Control
- Electric windows front and rear
- Front radar assistant including city emergency braking function with pedestrian detection
- Front footwell lighting
- Cruise control
- Tinted windows
- Isofix anchorage on the outer rear seats including top tether
- Boot cover, roll-up and removable
- Paint finish: Metallic / Pearl effect
- LED matrix headlights and dynamic high beam assist (Light Assist)
- Steering wheel: Leather steering wheel with multifunction buttons including paddle shifters.
- Front center armrest, including storage compartment
- Multi-collision brake
- Stainless steel pedal design
- Progressive steering
- Radio: Bolero infotainment system
- Radio accessories: Digital radio reception DAB+
- Tire pressure monitoring
- Rear seat backrest split 60:40, foldable, longitudinally adjustable, backrest angle adjustable
- Electromechanical power steering
- Seats: Heated front seats
- Seats: Electrically adjustable front seats with memory function
- Skoda Care Connect
- Sun visor on driver and passenger side with illuminated vanity mirror
- Sunset
- Front door sill trims
- 360° surround view camera (area view) including reversing camera
- Immobiliser



- Lashing eyes in the trunk
- Central locking with remote control

Extra equipment

- Swiveling trailer hitch (with electric release, including trailer stabilization)
- Microfiber headliner, black
- Chassis: Adaptive chassis DCC including driving profile selection (including off-road assistant for 4x4 drive)
- Package: Business Columbus (L&K) (Dynamic radio navigation system Columbus - 9.2" capacitive color display - Digital Cockpit Plus (10") - Driver fatigue detection - 230V socket and one USB charging port (Type-C) - Acoustic glazing in the front doors - Luggage net partition - Infotainment Online (3-year subscription))
- Auxiliary heating
- Traveller Plus (DSG) assistance system (Predictive Adaptive Cruise Control ACC (control range up to 210 km/h) - Lane Assist, Blind Spot Detection and Parking Assist, Exit Warning - Adaptive Lane Guidance - Park Assist - Traffic Jam and Emergency Assist - Traffic Sign Recognition)
- Electric panoramic sunroof including sunshade (no glasses compartment in the headliner)
- Wheels: 20" alloy wheels Merope anthracite-gloss-turned (8Jx20 tires 235/45 R20 100V ET41, tire pressure indicator)

Brief expert findings

Documents submitted	At the time of the inspection, the vehicle registration certificate Part 2 (title) was available, but the vehicle registration certificate Part 1 (document) was not. (Copy)
VIN comparison	The vehicle identification number (VIN) was read from the vehicle and its conformity with the submitted documents was confirmed by the undersigned during the inspection.
Inspection	The inspection conditions were sufficient for the assessment of the vehicle. Lifting equipment and/or a pit were available for examining the vehicle.
Test drive	No test drive/shunting maneuver was carried out during the inspection of the vehicle.
Engine function test	An engine test run was performed.

Value reducing factors

No.	Component group	Description
1	Wing mirror - left side	Cap - Scratched - Smart repair
2	Boot lid / rear door	Boot lid - Scratch(es) - Smart repair
3	Door - front left side	Door (erhöhter Aufbereitungsaufwand (schleifen/ polieren)) - Scratch(es) - Smart repair
4	Door - rear left side	Door (erhöhter Aufbereitungsaufwand (schleifen/ polieren)) - Scratch(es) - Smart repair
5	Wheel / tyres	Alloy rim - rear right side - Scratched - Loss in value
6	Wheel / tyres	Alloy rim - front right side - Scratched - Loss in value
7	Bonnet	Bonnet - Dent / paintcoat damage - Repair and paint
8	Vehicle glazing	Windscreen with rain sensor - Stone chips - Replace

Wear and tear

No.	Component group	Description
1	Roof	Roof rail - left side - Stone chips
2	Mudguard - left side	Mudguard - left side - Stone chips

The vehicle shows signs of wear and tear commensurate with its age and use.



Order/Scope of Order

An order was placed to prepare a sales report for the described vehicle. This report includes the following:

- Description of key vehicle information
- Documentation of equipment features
(Delivery by third-party service providers)
- Documentation of damage, defects, missing parts
- Documentation of prior damage, unrepaired prior damage, repainting
- A brief visual or functional inspection of the equipment details, if possible.
(Functional testing of driver assistance systems is not included in the scope of services!)
- a photographic documentation of the vehicle

Basis for the order

This product is based on the guidelines for vehicle returns and valuations published by Alphabet Fleet GmbH. The expert makes the specific findings in each individual case objectively, within the framework of the prescribed standards, based on their own expertise.

The vehicle inspection takes place in a fully assembled, unassembled state.

Damage or defects that can only be detected during disassembly/diagnostic work or through further investigation remain within the realm of prognostic risk. An increased risk exists due to concealed defects caused by fraudulent misrepresentation and which were not identifiable by the expert.

Damage or defects resulting from normal use or wear and tear of the vehicle will be accepted in accordance with the applicable standard.

There was no explicit identification or monetary consideration of the expected features within the product.

Features which, in their nature and extent, slightly exceed normal use but do not constitute unacceptable damage, will be documented and indicated as signs of wear, if applicable.

Damage or defects that, according to the applicable standard, can no longer be attributed to normal use or wear and tear are listed under "Value Reducing Factors" in the product description.

Depending on the product specification, a monetary ID can be provided. If this takes place, the costs can be 100% d or pro rata depending on the vehicle's age and mileage.

Previous damages

No apparent prior damage that had been repaired could be found on the vehicle.

Comments

- Der Winterradsatz ist kein Bestandteil der Ausstattungsliste.



Figure 1: Diagonal front (left)



Figure 2: Diagonal front (right)



Figure 3: Diagonal rear (left)



Figure 4: Diagonal rear (right)



Figure 5: Interior - front



Figure 6: Interior - rear



Figure 7: Instrument cluster



Figure 8: Instrument panel



Figure 9: Interior 360° view



Figure 10: Cargo area



Figure 11: VIN



Figure 12: Mounted tyres



Figure 13: Documents



Figure 14: Additional tyres



Figure 15: Additional tyres



Figure 16: Navigation

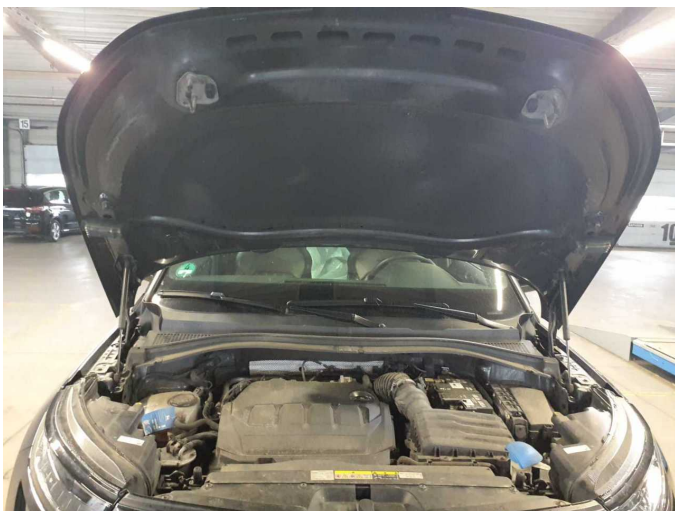


Figure 17: Misc.



Figure 18: Misc.



Figure 19: Misc.

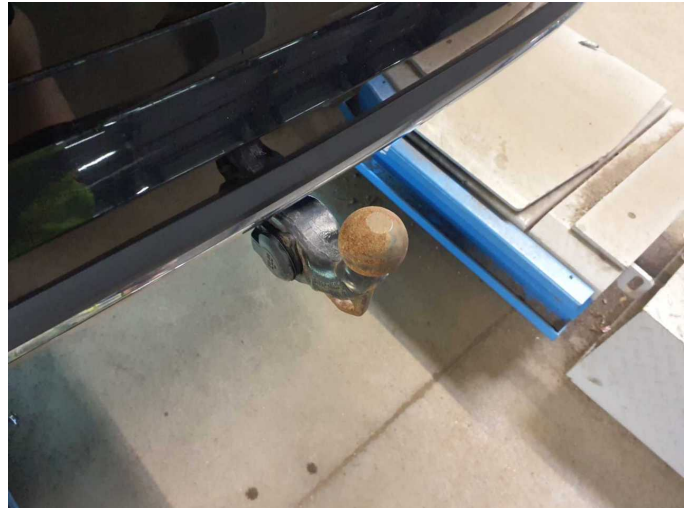


Figure 20: Misc.

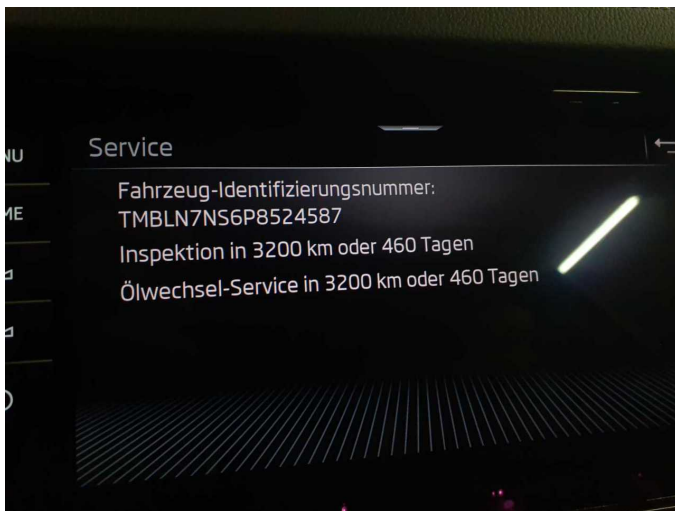


Figure 21: Misc.



Figure 22: Misc.



Figure 23: Misc.



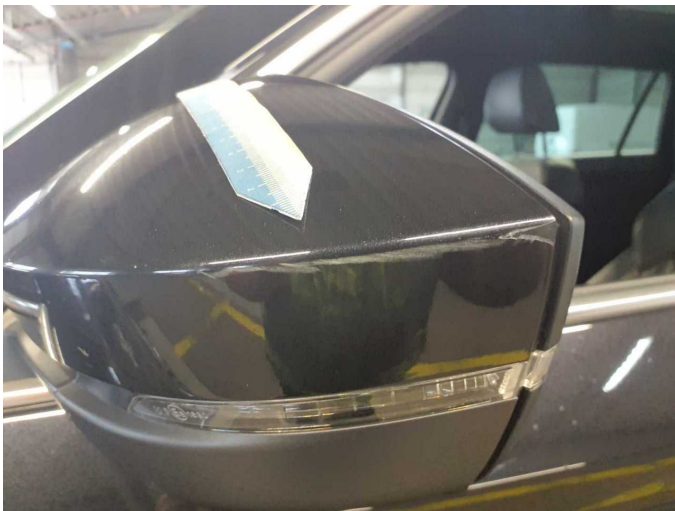
Figure 24: Misc.



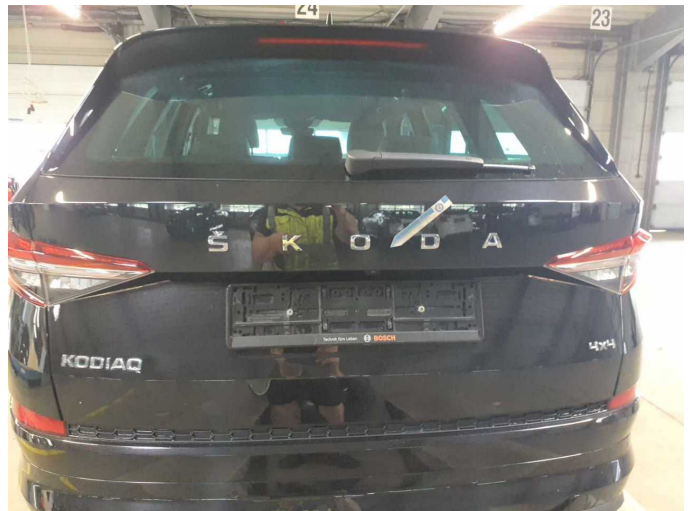
Figure 25: Misc.



Damage 1: Wing mirror - left side: Cap - Scratched - Smart repair



Damage 1: Wing mirror - left side: Cap - Scratched - Smart repair



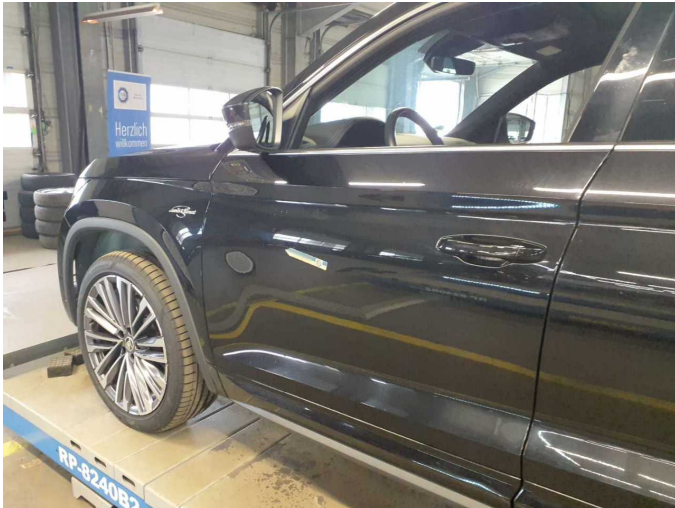
Damage 2: Boot lid / rear door: Boot lid - Scratch(es) - Smart repair



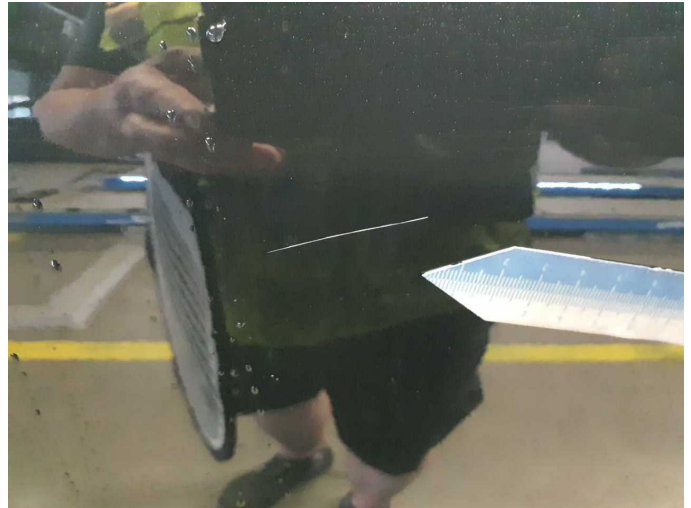
Damage 2: Boot lid / rear door: Boot lid - Scratch(es) - Smart repair



Damage 2: Boot lid / rear door: Boot lid - Scratch(es) - Smart repair



Damage 3: Door - front left side: Door (erhöhter Aufbereitungsaufwand (schleifen/ polieren)) - Scratch(es) - Smart repair



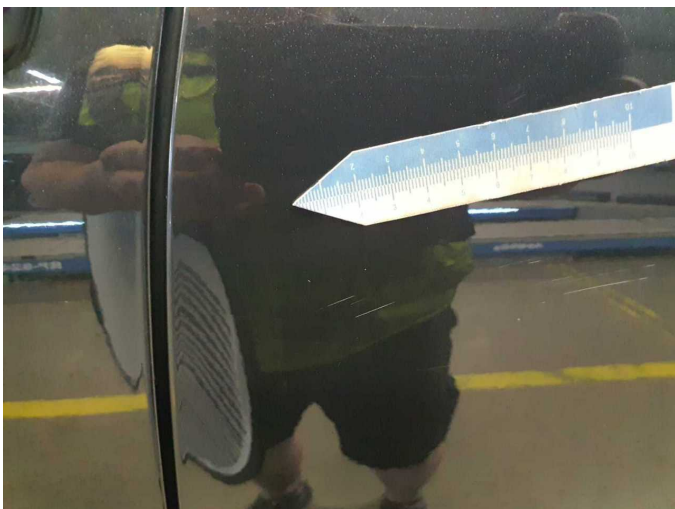
Damage 3: Door - front left side: Door (erhöhter Aufbereitungsaufwand (schleifen/ polieren)) - Scratch(es) - Smart repair



Damage 4: Door - rear left side: Door (erhöhter Aufbereitungsaufwand (schleifen/ polieren)) - Scratch(es) - Smart repair



Damage 4: Door - rear left side: Door (erhöhter Aufbereitungsaufwand (schleifen/ polieren)) - Scratch(es) - Smart repair



Damage 4: Door - rear left side: Door (erhöhter Aufbereitungsaufwand (schleifen/ polieren)) - Scratch(es) - Smart repair



Damage 4: Door - rear left side: Door (erhöhter Aufbereitungsaufwand (schleifen/ polieren)) - Scratch(es) - Smart repair



Damage 5: Wheel / tyres: Alloy rim - rear right side - Scratched - Loss in value



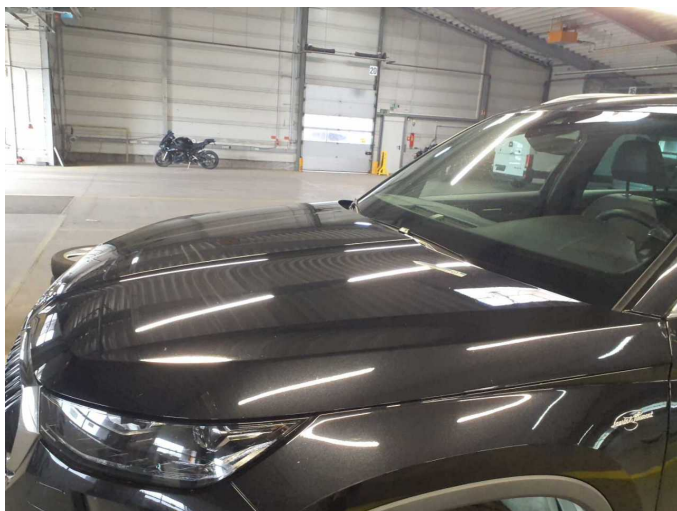
Damage 5: Wheel / tyres: Alloy rim - rear right side - Scratched - Loss in value



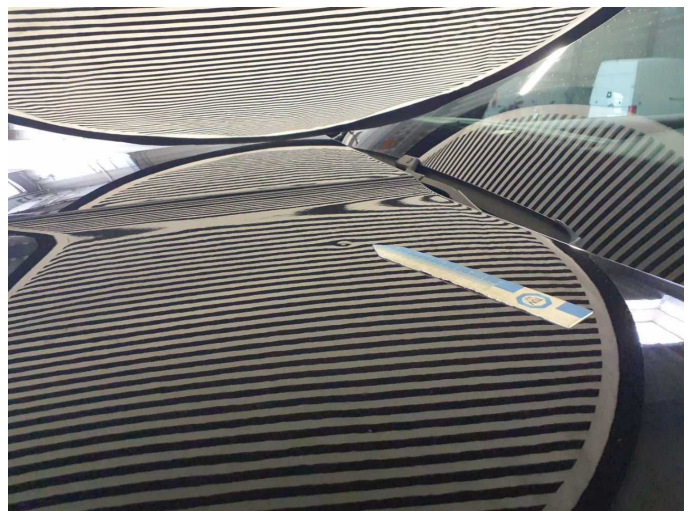
Damage 6: Wheel / tyres: Alloy rim - front right side - Scratched - Loss in value



Damage 6: Wheel / tyres: Alloy rim - front right side - Scratched - Loss in value



Damage 7: Bonnet: Bonnet - Dent / paintcoat damage - Repair and paint



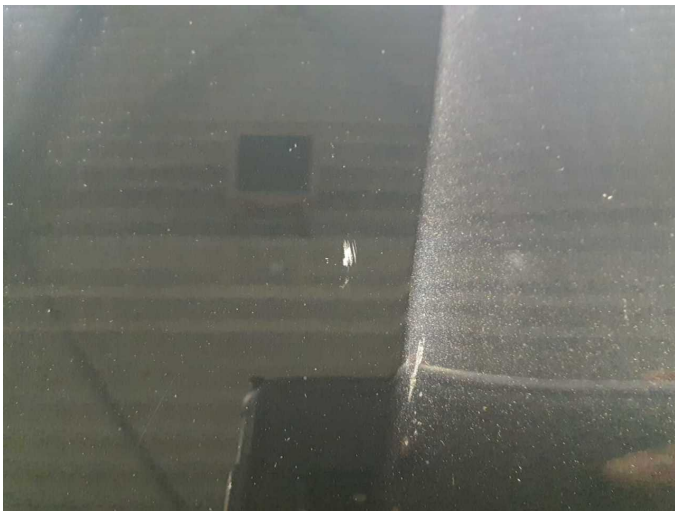
Damage 7: Bonnet: Bonnet - Dent / paintcoat damage - Repair and paint



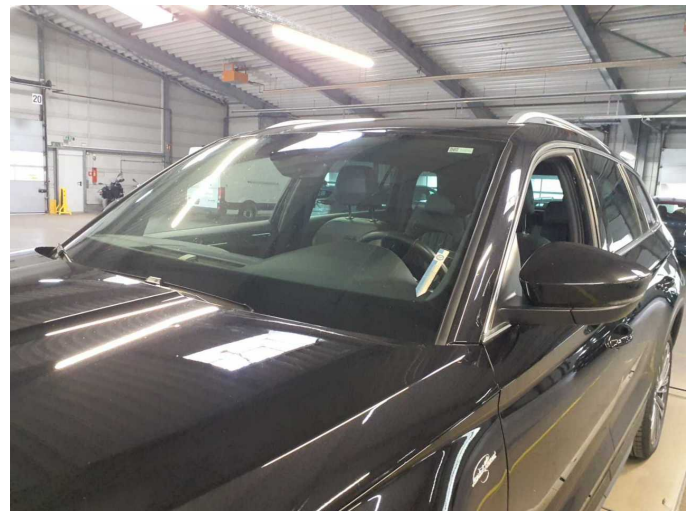
Damage 7: Bonnet: Bonnet - Dent / paintcoat damage - Repair and paint



Damage 7: Bonnet: Bonnet - Dent / paintcoat damage - Repair and paint



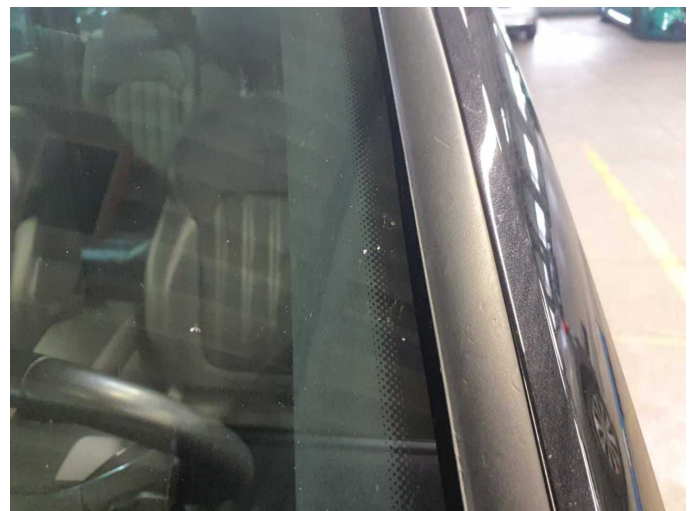
Damage 7: Bonnet: Bonnet - Dent / paintcoat damage - Repair and paint



Damage 8: Vehicle glazing: Windscreen with rain sensor - Stone chips - Replace



Damage 8: Vehicle glazing: Windscreen with rain sensor - Stone chips - Replace



Damage 8: Vehicle glazing: Windscreen with rain sensor - Stone chips - Replace



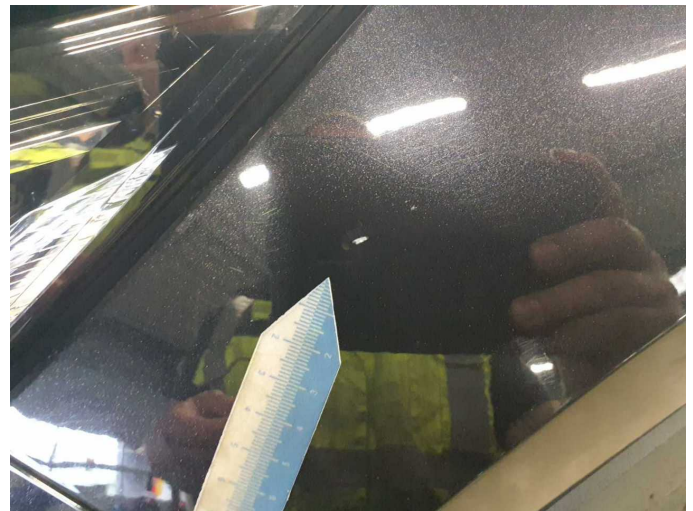
Wear and tear 1: Roof: Roof rail - left side - Stone chips



Wear and tear 1: Roof: Roof rail - left side - Stone chips



Wear and tear 2: Mudguard - left side: Mudguard - left side - Stone chips



Wear and tear 2: Mudguard - left side: Mudguard - left side - Stone chips



Wartungshistorie

(gemäß Auftraggeber Informationen)

Fahrgestellnummer: TMBLN7NS6P8524587
Hersteller / Modell: SKODA SKODA Kodiaq 2.0 TDI 4x4 DSG L&K

Datum	KM-Stand	Beschreibung
16.02.2026	106.423	Bremse Sonstiges; Bremsklötze hinten; Reparatur Sonstiges; Systemtest/ Eigendiagnose
02.12.2025	95.532	Batterie ern; Systemtest/Eigendiagnose
18.09.2025	90.230	Bremsflüssigkeit; Bremsflüssigkeit ern; Getriebeöl ern/prüfen; Kraftstofffilter ern; Luftfiltereinsatz ern; Motoröl b. Wartung; Ölfilter ern; Ölwechsel - Hinterachse; Regelwartungsdienst; Reparatur Sonstiges; Systemtest/ Eigendiagnose; Wartung Sonstiges
21.10.2024	60.469	Bremse Sonstiges; Bremsklötze vorne; Motoröl b. Wartung; Ölfilter ern; Regelwartungsdienst; Wartung Sonstiges
30.01.2024	29.359	Motoröl b. Wartung; Regelwartungsdienst; Wartung Sonstiges