

Expertise

Protocol number: 46318115
Order No. / Reference: 26325700
Inspection date: 3 Jul 2026

Manufacturer: Mercedes-Benz

Model: C 200 d T 9G-TRONIC Avantgarde

VIN: W1KAH0DB2PF089835



Vehicle details

Manufacturer / Type / Model / Equipment

Mercedes-Benz C 200 d T 9G-TRONIC Avantgarde

Vehicle Identification number W1KAH0DB2PF089835

Mileage (Read) 81,914 km

First registration 11 Jan 2023

Number of holders 1

Power / Engine displacement 120 kw / 1,993 ccm

Fuel type / Cylinder Hybrid Diesel / E / 4

Gearbox / Number of gears Automatic / 9

Type of drive Rear drive

Type of vehicle Station wagon

Colour / colour code GRAPHITGRAU -
METALLICLACK

Doors / Seats 5 / 5

Upholstery type Artificial leather

Colour of upholstery Black-Anthracite

Vehicle with smoke odor no



Vehicle details

Maintenance booklet / proof	Non-existent	Next maintenance in	144 Tag(e)
Key is / should be	2 / 2	FZG documents	ZB#2 (B) was available (copy), ZB#1 (S) was not available.
		Letter No.	GN008716
Previous damage / Accident	Detectable	Repainting	None detectable
Inspection conditions	sufficient	Lifting equipment / pit	yes
Test drive	Not performed	Engine function test	Performed
Manufacturer key number/ type code number	2222 / BDF 00145		
Emission standard	EURO6;WLTP;AP;PI/CI; M, N1 I	fine dust sticker	
Permitted total weight	2,400 kg	Empty weight	

Tyres

Mounted tyres

#	Tyre size	Type of tyre	Manufacturer	Tread depth
1)	225/50 R17 94H	Winter tyres on Light alloy	Hankook	8mm / 8mm
2)	225/50 R17 94H	Winter tyres on Light alloy	Bridgestone	8mm / 8mm

Additional tyres

#	Tyre size	Type of tyre	Manufacturer	Tread depth
1)	225/50 R17 94Y	Summer tyres (Without wheel rim)	Pirelli	7mm / 7mm
2)	225/50 R17 94Y	Summer tyres (Without wheel rim)	Pirelli	7mm / 7mm

Legend: Tread depth information for the left tire is listed first, for the right tire it is listed second on the axle in the direction of travel.



Equipment

Standard equipment

- Airbag for driver and front passenger
- Airbag: Center airbag
- Airbag: Windowbag for driver and front passenger
- Left and right exterior mirrors are heated and electrically adjustable
- Roof rails in polished aluminum
- Double cup holder at the front
- EASY-PACK tailgate
- Electronic Stability Program (ESP)
- Velour floor mats
- Transmission: 9-speed automatic, 9G-TRONIC
- Rear bumper in body color
- Interior headliner fabric crystal grey
- KEYLESS-GO start function
- THERMATIC automatic climate control with 1 climate zone
- Front headrests
- Cargo area cover including EASY-PACK safety net
- Steering wheel: Multifunction sports steering wheel in leather
- Package: Storage
- Package: Interior lighting package
- Radio: Extended MBUX functions
- Radio accessories: Digital radio (DAB)
- Radio accessories: Central display
- Tire pressure monitoring system (TPMS)
- Windscreen wipers with rain sensor
- Seats: Rear seat backrests foldable
- Cruise control
- Electronic immobilizer
- Decorative elements in diamond pattern, silver-grey
- Airbag: Automatic passenger airbag deactivation
- Airbag: Side airbag for driver and front passenger
- Ambient lighting with 64 light colors
- Basic services
- Brake assist, active
- Diesel particulate filter
- DYNAMIC SELECT
- ECO start/stop function
- Electric windows (4-way)
- Speed Limit Assistant
- rear window wiper
- Heated rear window
- ISOFIX child seat attachment with top tether in the rear
- Mechanical child safety lock for the rear doors
- Rear headrests (3)
- Paint finish: Solid
- LED High Performance Headlights
- Mercedes-Benz emergency call system
- Center console in high-gloss black
- Package: AVANTGARDE Exterior
- Upholstery: ARTICO leatherette/fabric
- Radio: MBUX
- Radio accessories: Communication module (LTE) for using Mercedes me connect services
- Remote Services Plus
- Power steering
- Lane Keeping Assist, active
- High-visibility vest for drivers
- Central locking with remote control



Extra equipment

- Active Distance Assist DISTRONIC (Automatically regulates the distance to the vehicle in front.)
- Package: Advanced Infotainment Package (MBUX Navigation Premium (hard drive navigation, pre-installation for Live Traffic Information), Traffic Sign Assist, Smartphone Integration (connects the mobile phone wirelessly to the multimedia system via Apple CarPlay and Android Auto), Wireless charging system for mobile devices in the front, Driver display - 31.2 cm (12.3") color LCD display, Central display - 30.2 cm (11.9") touch display with LCD technology)
- Package: Parking (12 ultrasonic sensors - reversing camera - Active Parking Assist with PARKTRONIC: detects free parking spaces, assisted parking, visual and acoustic warning, display of camera and ultrasonic data in the media display - Cross traffic warning: can provide visual and acoustic warnings when reversing out of a parking space and, if necessary, automatically initiate emergency braking - Reverse maneuvering brake: can trigger a braking process - Drive-away assist)
- Radio accessories: Advanced sound system (with 9 speakers and 225 watts system power)
- Telephone accessories: Wireless charging system for mobile devices (wireless charging according to Qi standard for compatible mobile phones - fast connection setup between multimedia system and mobile phone via Near Field Communication (NFC) for identification of the mobile device - storage compartment for wireless charging is located in the storage compartment at the front of the center console)
- AVANTGARDE Interior
- Center console diamond pattern silver grey
- Fuel tank with larger capacity
- Heat-insulating dark tinted glass
- Package: Advanced Comfort Package (Heated seats for driver and front passenger - Seat Comfort Package: - Numerous electric and manual adjustment options for the front seats to adapt to the specific body and comfort requirements of the driver and front passenger - Electro-pneumatic 4-way lumbar support and lateral support adjustment with control element on the seat - Electric seat cushion tilt adjustment - Electric height adjustment - Electric backrest adjustment - Electric seat cushion depth adjustment - Mechanical longitudinal adjustment - Mechanical headrest adjustment)
- Package: Mirror package (both exterior mirrors electrically folding (button in the driver's door control panel) - interior mirror and exterior mirror on the driver's side automatically dimming continuously - ambient lighting of the exterior mirror to illuminate the entry area with projection of the Mercedes-Benz logo)
- Paint finish: Metallic
- Seats: Comfort seats
- Type designation removed from trunk lid
- Upholstery: ARTICO man-made leather
- Wheels: 43.2 cm (17") light alloy wheels in 5-spoke design (black painted and polished with 225/50 R 17 on 7 J x 17 ET 44.5)

Brief expert findings

Documents submitted	At the time of the inspection, the vehicle registration certificate Part 2 (title) was available, but the vehicle registration certificate Part 1 (document) was not. (Copy)
VIN comparison	The vehicle identification number (VIN) was read from the vehicle and its conformity with the submitted documents was confirmed by the undersigned during the inspection.
Inspection	The inspection conditions were sufficient for the assessment of the vehicle. Lifting equipment and/or a pit were available for examining the vehicle.
Test drive	No test drive/shunting maneuver was carried out during the inspection of the vehicle.
Engine function test	An engine test run was performed.

Value reducing factors

No.	Component group	Description
1	Instrument panel	Indicator light (Reifendruckkontrollsystem) - on - Perform
2	Side panel - rear right side	Sill - Dent / paintcoat damage - Smart repair
3	Door - rear right side	Door seal - Broken / torn - Replace
4	Front bumper	Front bumper - Scratch(es) - Paint



Wear and tear

No.	Component group	Description
1	Misc.	Inspection / maintenance - No evidence - No deduction
2	Bonnet	Bonnet - Stone chips - No deduction
3	Body	Body - Scratch(es) - No deduction
4	Door - front left side	Door - dent(s) - No deduction
5	Body	Underbody panelling - Scratch(es) - No deduction

The vehicle shows signs of wear and tear commensurate with its age and use.

Previous damages

No.	Previous damage	Extent of damage (Net)
1	Rear, Provided by user / customer, from 23 Jan 2025	3.061,83 €

Paint coat thickness measurement

Boot lid / rear door 82 µm |

Order/Scope of Order

An order was placed to prepare a sales report for the described vehicle. This report includes the following:

- Description of key vehicle information
- Documentation of equipment features
(*Delivery by third-party service providers*)
- Documentation of damage, defects, missing parts
- Documentation of prior damage, unrepaired prior damage, repainting
- A brief visual or functional inspection of the equipment details, if possible.
(*Functional testing of driver assistance systems is not included in the scope of services!*)
- a photographic documentation of the vehicle

Basis for the order

This product is based on the guidelines for vehicle returns and valuations published by Alphabet Fleet GmbH. The expert makes the specific findings in each individual case objectively, within the framework of the prescribed standards, based on their own expertise.

The vehicle inspection takes place in a fully assembled, unassembled state.

Damage or defects that can only be detected during disassembly/diagnostic work or through further investigation remain within the realm of prognostic risk. An increased risk exists due to concealed defects caused by fraudulent misrepresentation and which were not identifiable by the expert.

Damage or defects resulting from normal use or wear and tear of the vehicle will be accepted in accordance with the applicable standard.

There was no explicit identification or monetary consideration of the expected features within the product.

Features which, in their nature and extent, slightly exceed normal use but do not constitute unacceptable damage, will be documented and indicated as signs of wear, if applicable.

Damage or defects that, according to the applicable standard, can no longer be attributed to normal use or wear and tear are listed under "Value Reducing Factors" in the product description.

Depending on the product specification, a monetary ID can be provided. If this takes place, the costs can be 100% d or pro rata depending on the vehicle's age and mileage.



Previous damages

According to available information previous damages were repaired at the vehicle. Traces of repairs, which allow conclusions about the area of repair, were not recognizable during the inspection.

Comments

- Winterreifensatz ist kein Bestandteil des Auslieferungsumfangs.



Figure 1: Diagonal front (left)



Figure 2: Diagonal front (right)



Figure 3: Diagonal rear (left)



Figure 4: Diagonal rear (right)



Figure 5: Interior - front



Figure 6: Interior - rear



Figure 7: Instrument cluster



Figure 8: Instrument panel



Figure 9: Interior 360° view



Figure 10: Cargo area



Figure 11: VIN

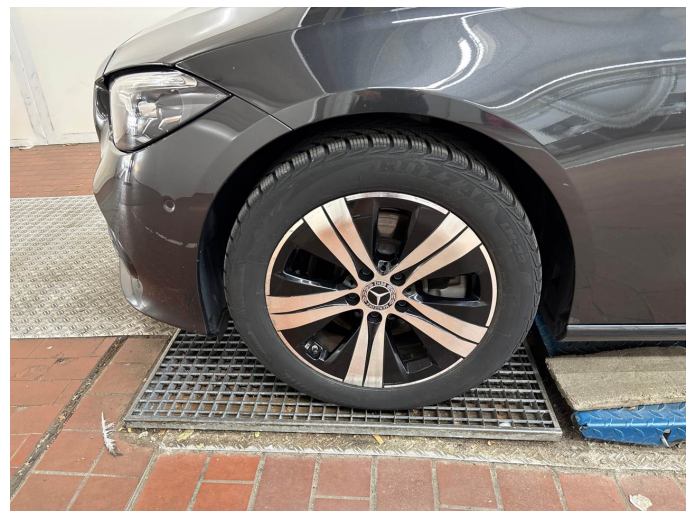


Figure 12: Mounted tyres

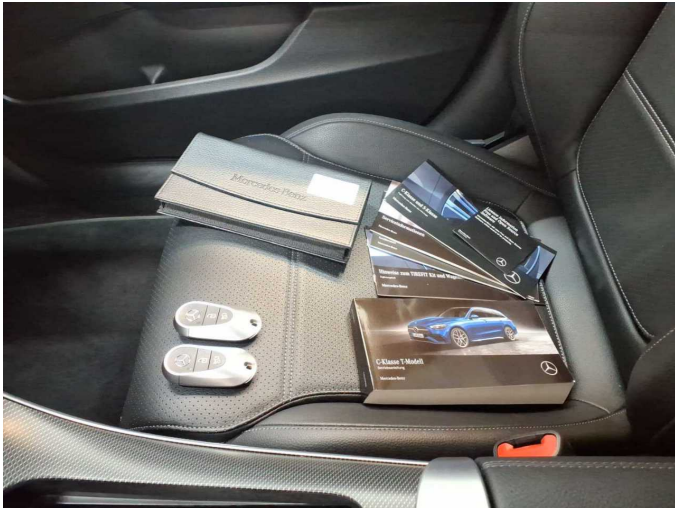


Figure 13: Documents



Figure 14: Documents



Figure 15: Additional tyres

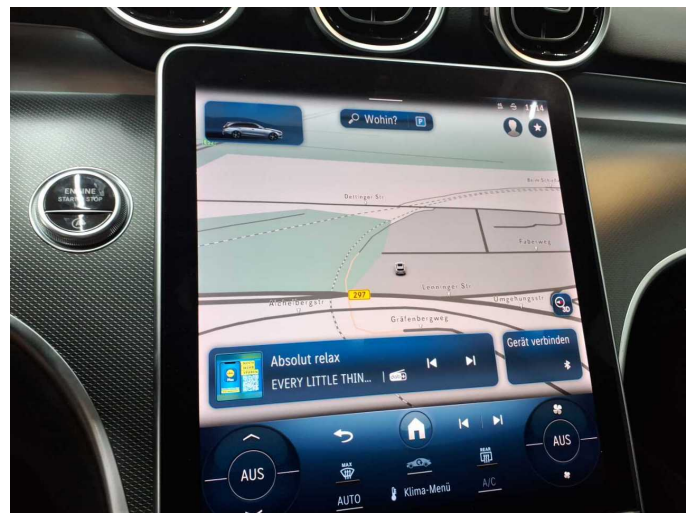


Figure 16: Navigation



Figure 17: Misc.

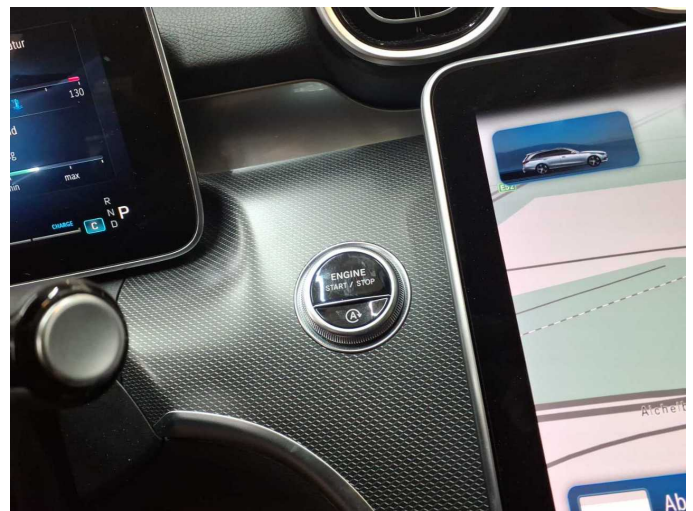


Figure 18: Misc.



Figure 19: Misc.

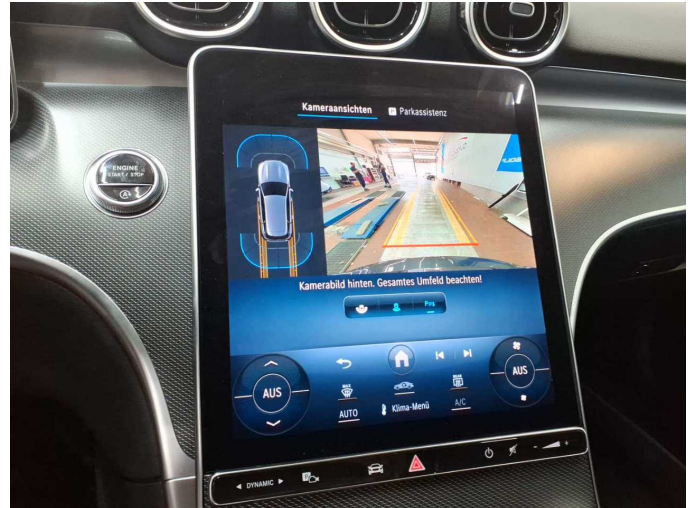


Figure 20: Misc.

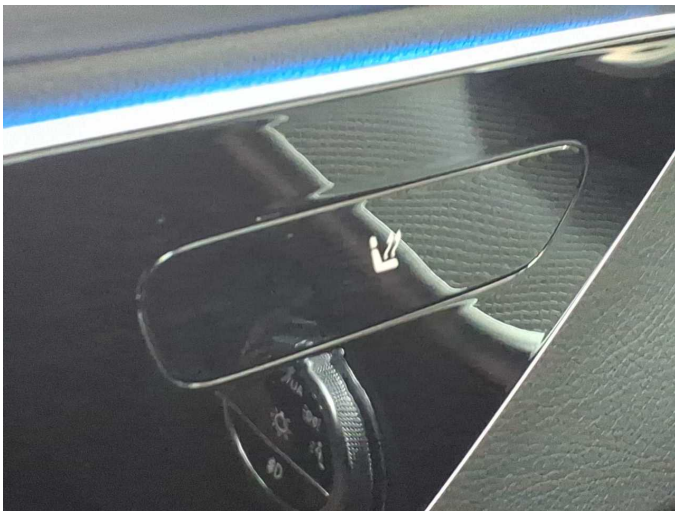


Figure 21: Misc.



Figure 22: Misc.

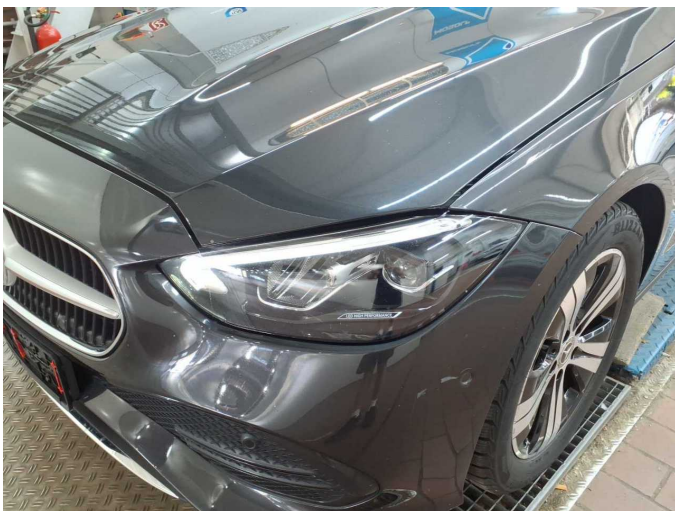


Figure 23: Misc.

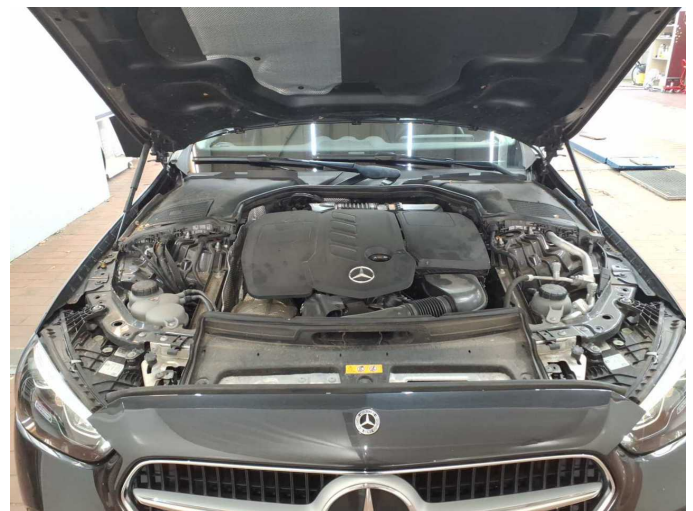


Figure 24: Misc.



Figure 25: Misc.



Figure 26: Misc.

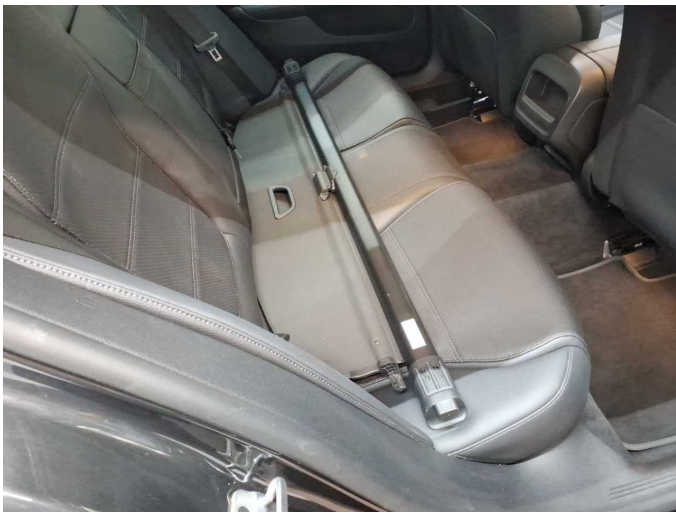


Figure 27: Misc.



Figure 28: Misc.



Figure 29: Misc.



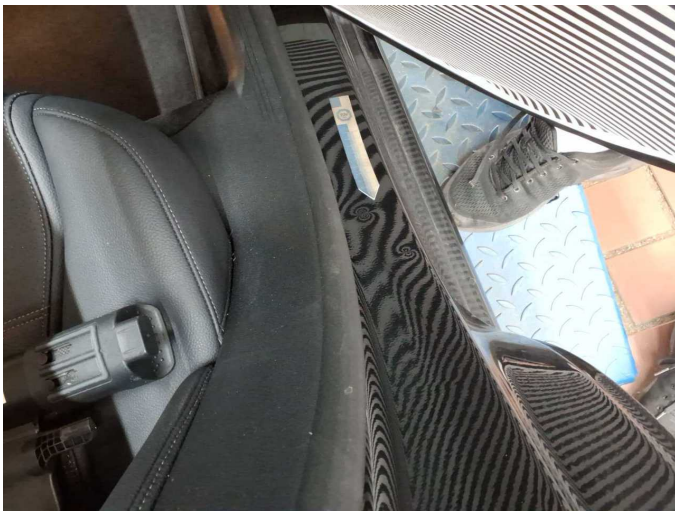
Damage 1: Instrument panel: Indicator light (Reifendruckkontrollsystem) - on - Perform



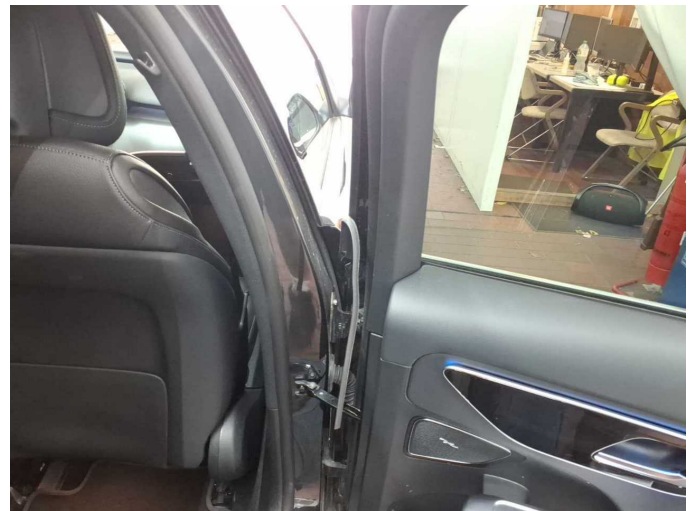
Damage 2: Side panel - rear right side: Sill - Dent / paintcoat damage - Smart repair



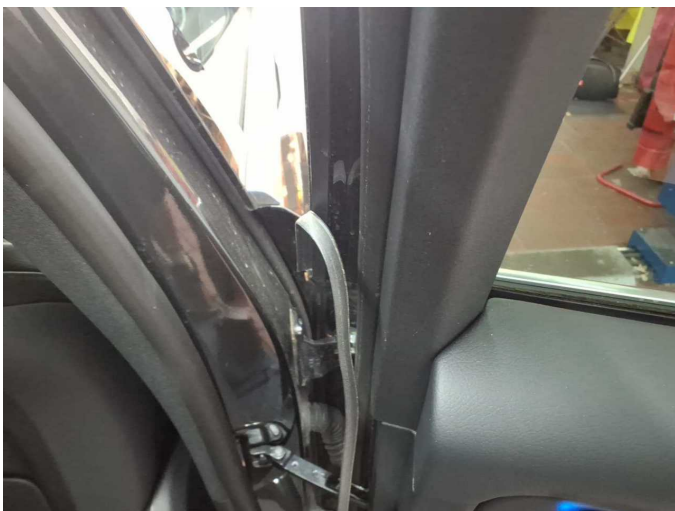
Damage 2: Side panel - rear right side: Sill - Dent / paintcoat damage - Smart repair



Damage 2: Side panel - rear right side: Sill - Dent / paintcoat damage - Smart repair



Damage 3: Door - rear right side: Door seal - Broken / torn - Replace



Damage 3: Door - rear right side: Door seal - Broken / torn - Replace



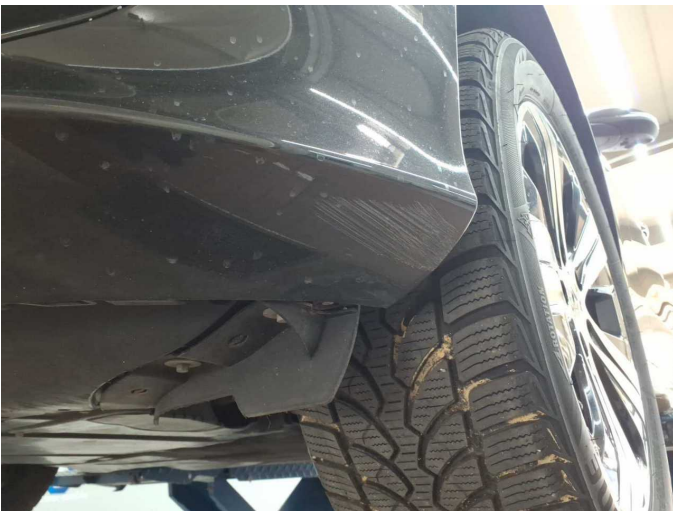
Damage 4: Front bumper: Front bumper - Scratch(es) - Paint



Damage 4: Front bumper: Front bumper - Scratch(es) - Paint



Damage 4: Front bumper: Front bumper - Scratch(es) - Paint



Damage 4: Front bumper: Front bumper - Scratch(es) - Paint



Previous damage 1: Rear