

## Expertise

Protocol number: 46113523  
Order No. / Reference: 26434058  
Inspection date: 23 Jun 2026

Manufacturer: Skoda

Model: Kodiaq 2.0 TDI DSG Ambition

VIN: TMBJJ7NS4P8521769



### Vehicle details

#### Manufacturer / Type / Model / Equipment

Skoda Kodiaq 2.0 TDI DSG Ambition

**Vehicle Identification number** TMBJJ7NS4P8521769

**Mileage (Read)** 118,402 km

**First registration** 13 Apr 2023

**Number of holders** 1

**Next periodical technical inspection** 04/2028  
(Report not on hand)

**Power / Engine displacement** 110 kw / 1,968 ccm

**Fuel type / Cylinder** Diesel / 4

**Gearbox / Number of gears** Automatic / 7

**Type of drive** Front drive

**Type of vehicle** SUV

**Colour / colour code** moonweiss-metallic (S9R)

**Doors / Seats** 5 / 5

**Upholstery type** Cloth

**Colour of upholstery** Black-Grey



## Vehicle details

|  |                              |                                |  |
|--|------------------------------|--------------------------------|--|
| <b>Maintenance booklet / proof</b>               | digital proof / complete     | <b>Next maintenance in</b>     | 10,400 km  |
| <b>Last service on / at</b>                      | 12/2025 at 98,768 km         |                                |  |
| <b>Key is / should be</b>                        | 2 / 2                        | <b>FZG documents</b>           | ZB#2 (B) was available (copy), ZB#1 (S) was not available. |
|  |                              | <b>Letter No.</b>              | GQ556529   |
| <b>Previous damage / Accident</b>                | Detectable                   | <b>Repainting</b>              | None detectable  |
| <b>Inspection conditions</b>                     | sufficient                   | <b>Lifting equipment / pit</b> | yes  |
| <b>Test drive</b>                                | Not performed                | <b>Engine function test</b>    | Performed  |
| <b>Manufacturer key number/ type code number</b> | 8004 / ART 03807             |                                |  |
| <b>Emission standard</b>                         | EURO6;WLTP;AP;PI/CI; M, N1 I | <b>fine dust sticker</b>       |  |
| <b>Permitted total weight</b>                    | 2,360 kg                     | <b>Empty weight</b>            |  |

## Tyres

### Mounted tyres

| #  | Tyre size       | Type of tyre                | Manufacturer | Tread depth |
|----|-----------------|-----------------------------|--------------|-------------|
| 1) | 215/65 R17 103V | Winter tyres on Light alloy | Goodyear     | 6mm / 6mm   |
| 2) | 215/65 R17 103V | Winter tyres on Light alloy | Falken       | 7 mm        |
|    | 215/65 R17 99H  | Winter tyres on Light alloy | Bridgestone  | 7 mm        |

### Additional tyres

| #  | Tyre size      | Type of tyre                | Manufacturer | Tread depth |
|----|----------------|-----------------------------|--------------|-------------|
| 1) | 215/65 R17 99V | Summer tyres on Light alloy | Hankook      | 2mm / 2mm   |
| 2) | 215/65 R17 99V | Summer tyres on Light alloy | Hankook      | 4mm / 4mm   |

### Replacement

| Typ | Tyre size | Type of tyre            | Manufacturer | Tread depth |
|-----|-----------|-------------------------|--------------|-------------|
|     | Tirefit   | Expiration date 01/2027 |              |             |

**Legend: Tread depth information for the left tire is listed first, for the right tire it is listed second on the axle in the direction of travel.**

TÜV SÜD Auto Partner GmbH  
Wiesenring 2  
04159 Leipzig

Inspection location  
Hartmann Fleet Professionals GmbH  
Leerenstraße 25  
29683 Bad Fallingbommel



## Equipment



## Standard equipment

- 12V socket in the center console and in the trunk
- Storage compartments behind the wheel arches in the trunk
- Airbag, driver's knee airbag
- Airbag, head airbags
- Allergen filter
- Traction control (ASR)
- Electrically folding exterior mirrors including interior and driver's side mirrors with automatic dimming
- Hill start assist
- Care Connect: Proactive services (10-year term) (Remote Access (1-year term))
- Decorative inlay, brushed aluminum
- Digital Cockpit (8")
- Third brake light (in the rear spoiler (LED))
- eCall (automatic emergency call function in case of an accident with airbag deployment)
- ESC Electronic Stability Control
- Electric windows front and rear (including anti-pinch protection and child safety lock)
- Closed storage compartment on the driver's side
- Cruise control
- Tinted windows
- Isofix anchorage on the outer rear seats including top tether
- Boot cover, roll-up and removable
- Front and rear headrests are height-adjustable.
- LED headlights with daytime running lights
- Steering wheel: Leather steering wheel with multifunction buttons including paddle shifters (height and reach adjustable)
- Engine drag torque control (MSR)
- Fog lights with integrated LED daytime running lights
- Upholstery: Cloth
- Radio: Swing 6.5" music system
- Radio accessories: 8 speakers
- Tire mobility kit (tire repair spray incl. compressor)
- Wheels: 17" Mytikas alloy wheels (7Jx17 tires 215/65 R17 99V ET40)
- Heated windshield washer nozzles, front
- Electromechanical power steering
- Seats: Adjustable lumbar support in the front seats
- Seats: Height-adjustable front seats
- Skoda Care Connect (SOS emergency call function (eCall, including automatic activation in the event of an accident with airbag deployment) - Mobility service (connection for rapid assistance in case of breakdown) - Information service (connection to the hotline for all questions regarding vehicle functions) - Free remote vehicle access for one year with access to vehicle data/functions via smartphone, e.g., parking position, activating hazard warning lights, current fuel level, etc.)
- Central locking with remote control (two vehicle keys)
- Storage compartment on the left wheel arch
- front aero windshield wipers
- Airbag for driver and front passenger (passenger airbag can be deactivated)
- Airbag, front side airbags
- Anti-lock braking system (ABS)
- Dashboard in black / black, door trim in black
- Electrically adjustable and heated exterior mirrors with integrated side indicators
- Hydraulic brake assist (HBA)
- Grey headliner
- Roof rails, black
- Diesel particulate filter
- Tachometer
- Easy Start (start-stop button)
- Electronic parking brake including auto-hold function
- Electronic transverse differential lock (XDS+)
- Driving light assistant and rain sensor ((tunnel light, coming and leaving home function))
- Front radar assistant including city emergency braking function with pedestrian detection
- Transmission: 7-speed dual-clutch transmission (DSG)
- Illuminated glove compartment
- Climatronic air conditioning (2-zone) (fully automatic, separately adjustable for driver and front passenger including humidity sensor and odor and allergen filter)
- LED taillights in crystal glass look with animated turn signals
- Reading lights at the front of the headliner
- Rear center armrest with cup holders
- Front center armrest, including storage compartment
- Multi-collision brake
- Rear parking sensors
- Wheel arch cover (front and rear, made of plastic, black textured)
- Radio accessories: Digital radio reception DAB+
- Tire pressure monitoring
- Rear seat backrest split 60:40, foldable, longitudinally adjustable, backrest angle adjustable
- Headlights washer / wiper system
- Kodiaq safety belts (Height-adjustable three-point seat belts in the front, with belt tensioners - Three three-point seat belts in the rear - Belt fastening indicator in the front and in the second row of seats)
- Sun visor on driver and passenger side with illuminated vanity mirror
- Speed limiter
- Telephone: Comfort hands-free telephone system (without connection to the external antenna)
- Variable fastening concept in the trunk
- Lashing eyes in the trunk
- Immobiliser



### Extra equipment

- Electric tailgate operation
- Paint finish: Metallic / Pearl effect
- Radio: Bolero infotainment system
- Rear view camera
- Seats: Heated front seats
- Sunset (rear window and rear side windows tinted dark)
- Windscreen, wirelessly heated
- Luggage net partition
- Package: Business Amundsen (Ambition) (Amundsen dynamic radio navigation system - 8" capacitive color display - Digital Cockpit Plus (10") - Wireless SmartLink - Voice control - Phonebox with inductive charging function (connection via external antenna) - Driver fatigue detection - 230V socket and a USB charging port (Type-C) on the back of the front center armrest - Sunset - Luggage net partition - Infotainment Online (3-year subscription))

### Brief expert findings

|                      |  |
|----------------------|--|
| Documents submitted  | At the time of the inspection, the vehicle registration certificate Part 2 (title) was available, but the vehicle registration certificate Part 1 (document) was not. (Copy) |
| VIN comparison       | The vehicle identification number (VIN) was read from the vehicle and its conformity with the submitted documents was confirmed by the undersigned during the inspection.    |
| Inspection           | The inspection conditions were sufficient for the assessment of the vehicle.<br>Lifting equipment and/or a pit were available for examining the vehicle.                     |
| Test drive           | No test drive/shunting maneuver was carried out during the inspection of the vehicle.  |
| Engine function test | An engine test run was performed.  |

### Value reducing factors

| No. | Component group              | Description   |
|-----|------------------------------|---|
| 1   | Trim / covers                | Floor mats - Broken / torn - Replace                              |
| 2   | Side panel - rear right side | Side panel - dent(s) - Smooth repair work                         |
| 3   | Wing mirror - right side     | Cap - Scratch(es) - Paint   |
| 4   | Boot lid / rear door         | Boot lid - Scratch(es) - Smart repair                             |
| 5   | Body                         | Body - Stone chips - Conditioning                                 |
| 6   | 2nd wheel set                | 2 tyres - Worn - Replace  |
| 7   | Mudguard - left side         | Mudguard - left side - Dent / paintcoat damage - Repair and paint |
| 8   | Front bumper                 | Front bumper - Stone chips - Paint                                |
| 9   | Door - rear right side       | Door - dent(s) - Repair and paint                                 |
| 10  | Bonnet                       | Bonnet - Scratch(es) - Paint                                      |
| 11  | Roof                         | Roof - Corrosion - Repair and paint                               |
| 12  | Vehicle glazing              | Windscreen - Broken / torn - Replace                              |

### Wear and tear

| No. | Component group   | Description   |
|-----|-------------------|---|
| 1   | Multimedia system | Screen - Scratch(es) - No deduction                   |
| 2   | Trim / covers     | Boot lid - interior trim - Scratch(es) - No deduction |
| 3   | Rear bumper       | Rear bumper - Scratch(es) - No deduction              |

The vehicle shows signs of wear and tear commensurate with its age and use.

### Previous damages

| No. | Previous damage  | Extent of damage (Net) |
|-----|--|------------------------|
| 1   | Side right, Provided by user / customer, from 1 Aug 2024 | 3.045,11 €             |



## Accident damages

### No. Accident

1 Front

## Order/Scope of Order

An order was placed to prepare a sales report for the described vehicle. This report includes the following:

- Description of key vehicle information
- Documentation of equipment features  
(*Delivery by third-party service providers*)
- Documentation of damage, defects, missing parts
- Documentation of prior damage, unrepaired prior damage, repainting
- A brief visual or functional inspection of the equipment details, if possible.  
(*Functional testing of driver assistance systems is not included in the scope of services!*)
- a photographic documentation of the vehicle

## Basis for the order

This product is based on the guidelines for vehicle returns and valuations published by Alphabet Fleet GmbH. The expert makes the specific findings in each individual case objectively, within the framework of the prescribed standards, based on their own expertise.

The vehicle inspection takes place in a fully assembled, unassembled state.

Damage or defects that can only be detected during disassembly/diagnostic work or through further investigation remain within the realm of prognostic risk. An increased risk exists due to concealed defects caused by fraudulent misrepresentation and which were not identifiable by the expert.

Damage or defects resulting from normal use or wear and tear of the vehicle will be accepted in accordance with the applicable standard.

There was no explicit identification or monetary consideration of the expected features within the product.

Features which, in their nature and extent, slightly exceed normal use but do not constitute unacceptable damage, will be documented and indicated as signs of wear, if applicable.

Damage or defects that, according to the applicable standard, can no longer be attributed to normal use or wear and tear are listed under "Value Reducing Factors" in the product description.

Depending on the product specification, a monetary ID can be provided. If this takes place, the costs can be 100% d or pro rata depending on the vehicle's age and mileage.

## Previous damages

Non-repaired previous damages were found at the vehicle. The necessary repair costs are listed in the expert report or if necessary, are listed in detail in a separately enclosed repair cost calculation.

## Comments

- Winterradsatz ist kein Bestandteil des Auslieferungsumfangs.



Figure 1: Diagonal front (left)



Figure 2: Diagonal front (right)



Figure 3: Diagonal rear (left)



Figure 4: Diagonal rear (right)



Figure 5: Interior - front



Figure 6: Interior - rear



Figure 7: Instrument panel



Figure 8: Interior 360° view



Figure 9: Cargo area

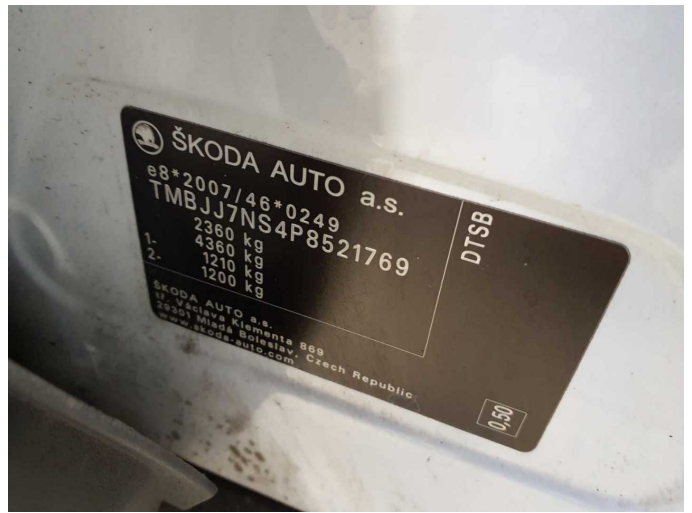


Figure 10: VIN



Figure 11: Mounted tyres

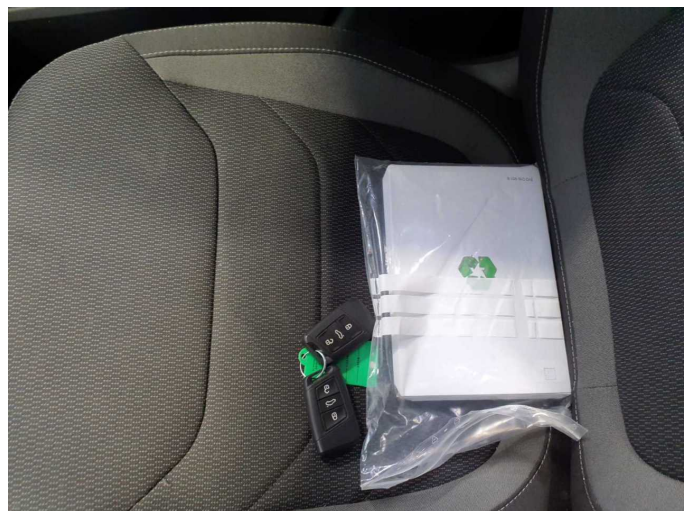


Figure 12: Documents



Figure 13: Additional tyres



Figure 14: Additional tyres



Figure 15: Navigation



Figure 16: Misc.



Figure 17: Misc.

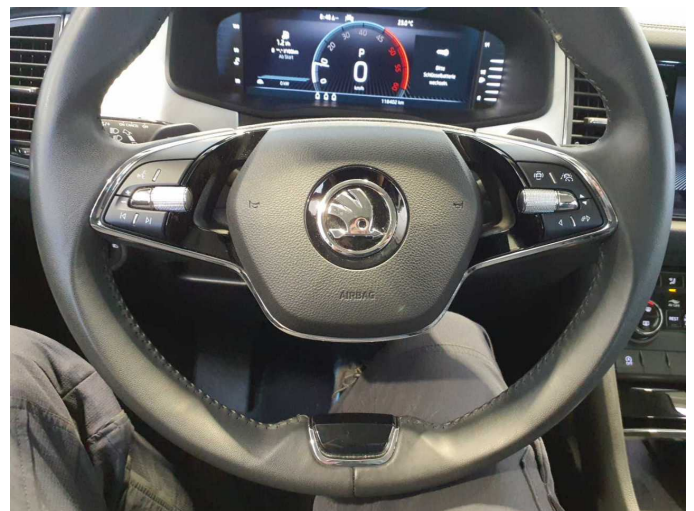


Figure 18: Misc.

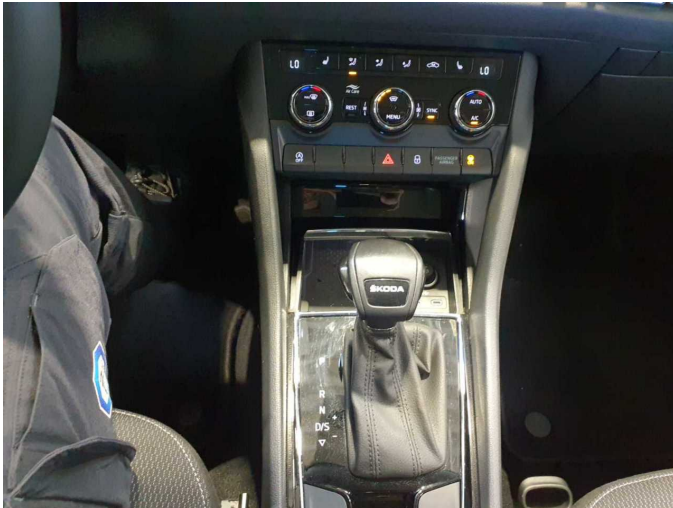


Figure 19: Misc.



Figure 20: Misc.



Figure 21: Misc.



Figure 22: Misc.

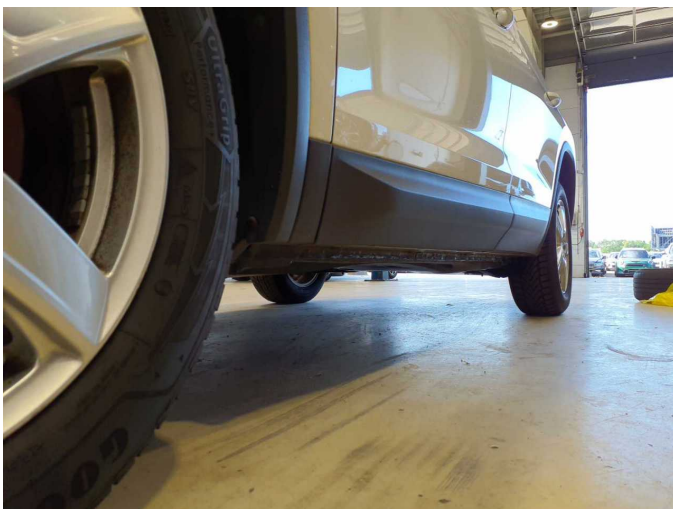


Figure 23: Misc.



Figure 24: Misc.



Figure 25: Misc.



Figure 26: Misc.

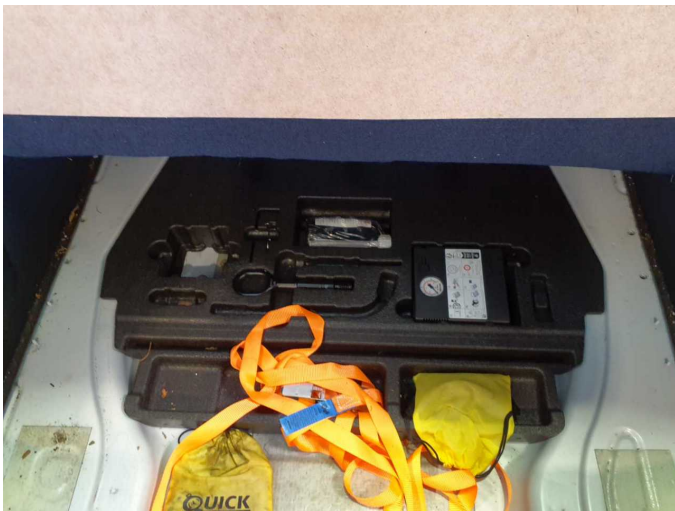
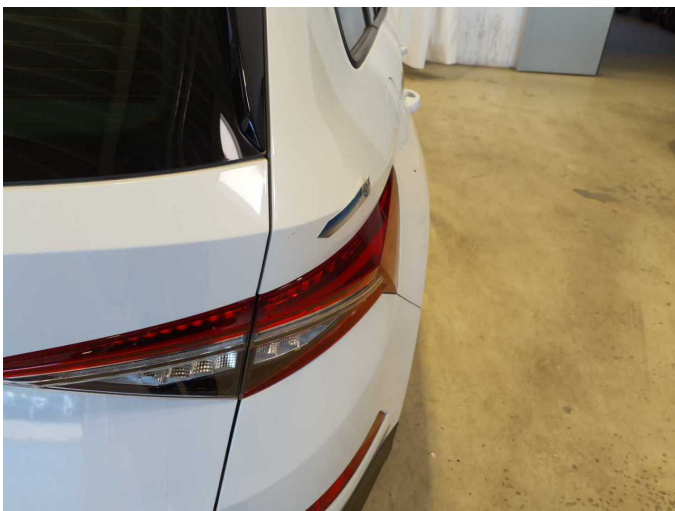


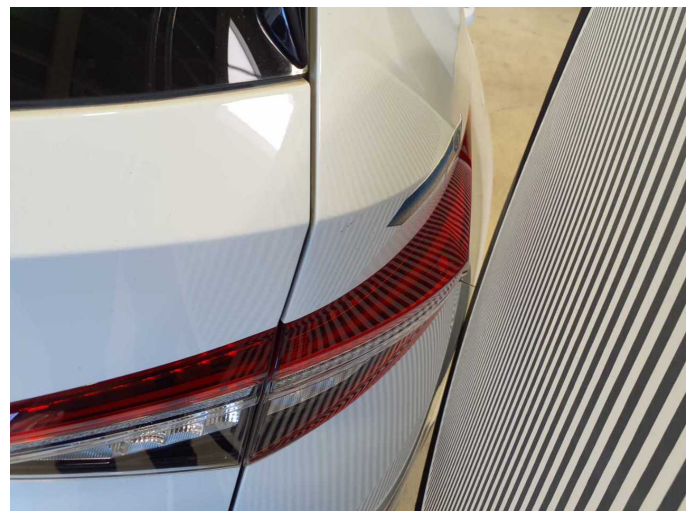
Figure 27: Misc.



Damage 1: Trim / covers: Floor mats - Broken / torn - Replace



Damage 2: Side panel - rear right side: Side panel - dent(s) - Smooth repair work



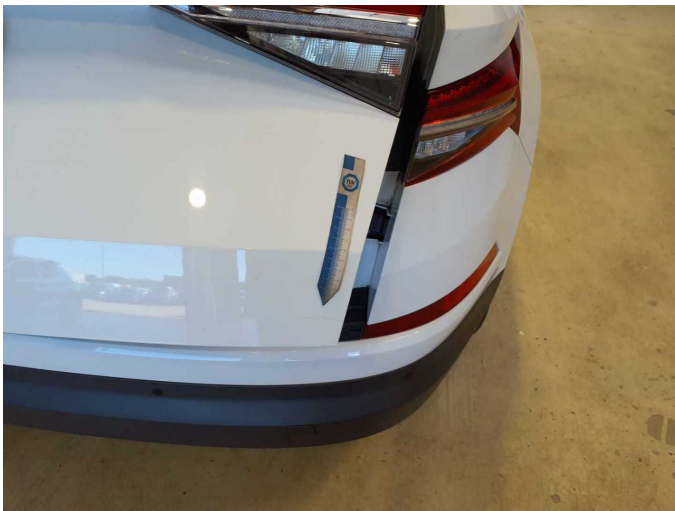
Damage 2: Side panel - rear right side: Side panel - dent(s) - Smooth repair work



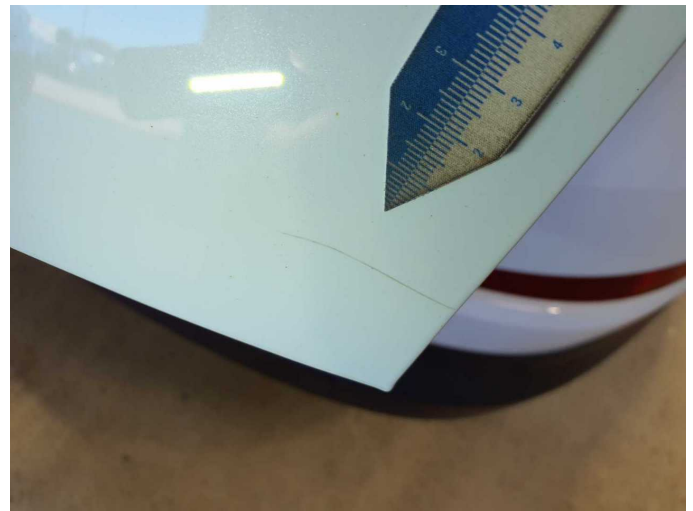
**Damage 3:** Wing mirror - right side: Cap - Scratch(es) - Paint



**Damage 3:** Wing mirror - right side: Cap - Scratch(es) - Paint



**Damage 4:** Boot lid / rear door: Boot lid - Scratch(es) - Smart repair



**Damage 4:** Boot lid / rear door: Boot lid - Scratch(es) - Smart repair



**Damage 5:** Body: Body - Stone chips - Conditioning



**Damage 6:** 2nd wheel set: 2 tyres - Worn - Replace



**Damage 6:** 2nd wheel set: 2 tyres - Worn - Replace



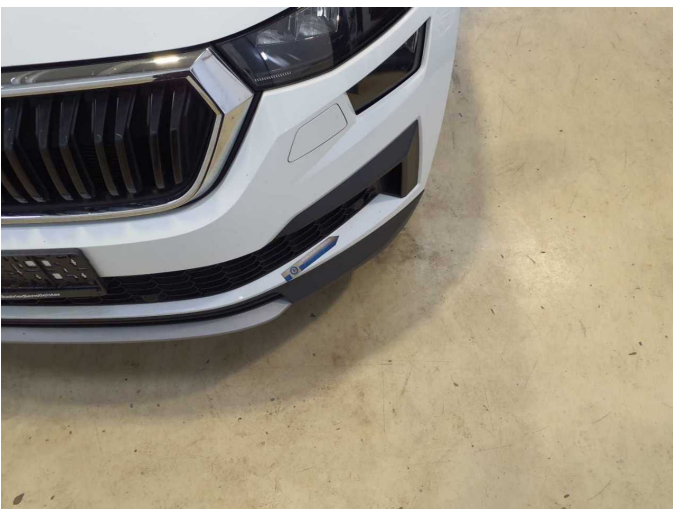
**Damage 7:** Mudguard - left side: Mudguard - left side - Dent / paintcoat damage - Repair and paint



**Damage 7:** Mudguard - left side: Mudguard - left side - Dent / paintcoat damage - Repair and paint



**Damage 7:** Mudguard - left side: Mudguard - left side - Dent / paintcoat damage - Repair and paint



**Damage 8:** Front bumper: Front bumper - Stone chips - Paint



**Damage 8:** Front bumper: Front bumper - Stone chips - Paint



**Damage 9:** Door - rear right side: Door - dent(s) - Repair and paint



**Damage 9:** Door - rear right side: Door - dent(s) - Repair and paint



**Damage 9:** Door - rear right side: Door - dent(s) - Repair and paint



**Damage 9:** Door - rear right side: Door - dent(s) - Repair and paint



**Damage 9:** Door - rear right side: Door - dent(s) - Repair and paint



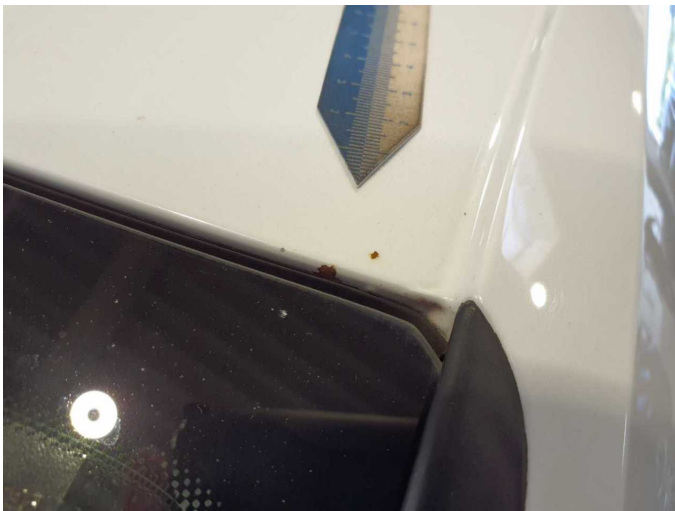
**Damage 10:** Bonnet: Bonnet - Scratch(es) - Paint



**Damage 10:** Bonnet: Bonnet - Scratch(es) - Paint



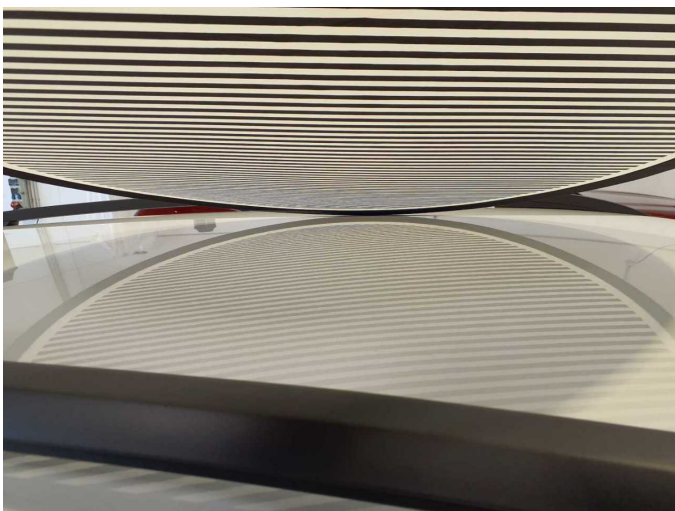
**Damage 11:** Roof: Roof - Corrosion - Repair and paint



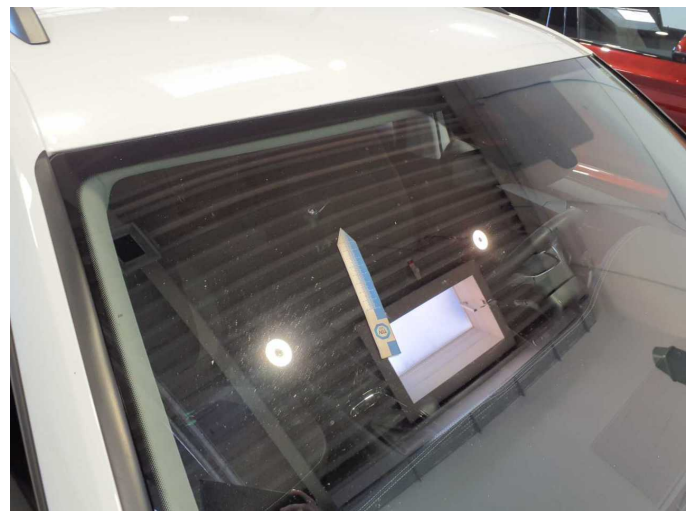
**Damage 11:** Roof: Roof - Corrosion - Repair and paint



**Damage 11:** Roof: Roof - Corrosion - Repair and paint



**Damage 11:** Roof: Roof - Corrosion - Repair and paint



**Damage 12:** Vehicle glazing: Windscreen - Broken / torn - Replace



**Damage 12:** Vehicle glazing: Windscreen - Broken / torn - Replace



**Accident 1:** Front



**Accident 1:** Front



**Accident 1:** Front