

Expertise

Protocol number: 46182534
Order No. / Reference: 26430816
Inspection date: 26 Jun 2026

Manufacturer: Volkswagen

Model: Passat Variant 2.0 TDI SCR DSG Business

VIN: WVVZZZ3CZPE056706



Vehicle details

Manufacturer / Type / Model / Equipment

Volkswagen Passat Variant 2.0 TDI SCR DSG Business

Vehicle Identification number WVVZZZ3CZPE056706

Mileage (Read) 107,813 km

First registration 22 May 2023

Number of holders 1

Power / Engine displacement 147 kw / 1,968 ccm

Fuel type / Cylinder Diesel / 4

Gearbox / Number of gears Automatic / 7

Type of drive Front drive

Type of vehicle Station wagon

Colour / colour code Scale Silver Metallic

Doors / Seats 5 / 5

Upholstery type Cloth

Colour of upholstery Black



Vehicle details

| | | | |
|--|------------------------------|--------------------------------|--|
| Maintenance booklet / proof | digital proof / complete | Next maintenance in | 10,300 km |
| Last service on / at | 10/2025 at 88,104 km | | |
| Key is / should be | 2 / 2 | FZG documents | ZB#2 (B) was available (copy), ZB#1 (S) was not available. |
| | | Letter No. | GS530343 |
| Previous damage / Accident | None detectable | Repainting | None detectable |
| Inspection conditions | sufficient | Lifting equipment / pit | No |
| Test drive | Not performed | Engine function test | Performed |
| Manufacturer key number/ type code number | 0603 / CON 01690 | | |
| Emission standard | EURO6;WLTP;AP;PI/CI; M, N1 I | fine dust sticker | |
| Permitted total weight | 2,180 kg | Empty weight | |

Tyres

Mounted tyres

| # | Tyre size | Type of tyre | Manufacturer | Tread depth |
|----|----------------|---|--------------|-------------|
| 1) | 235/45 R18 94W | Summer tires (with run-flat tires) on Light alloy | Pirelli | 7mm / 7mm |
| 2) | 235/45 R18 94W | Summer tires (with run-flat tires) on Light alloy | Continental | 6mm / 6mm |

Additional tyres

| # | Tyre size | Type of tyre | Manufacturer | Tread depth |
|----|----------------|---|--------------|-------------|
| 1) | 215/55 R17 94H | Winter tires (with run-flat tires) on Light alloy | Pirelli | 4mm / 4mm |
| 2) | 215/55 R17 94H | Winter tires (with run-flat tires) on Light alloy | Pirelli | 5mm / 5mm |

Legend: Tread depth information for the left tire is listed first, for the right tire it is listed second on the axle in the direction of travel.



Equipment

Standard equipment

- Airbag for driver and front passenger
- Anti-lock braking system (ABS)
- Adaptive Cruise Control (ACC) "stop & go", including speed limiter
- Cup holders (2) front
- third brake light
- Headliner in Mistral Grey
- Diesel particulate filter
- Parking aid - warning signals for obstacles in the front and rear area
- Electronic stability program and electromechanical brake booster
- Windscreen made of laminated safety glass, heat and sound insulating
- Transmission: 7-speed DSG
- rear window wiper
- ISOFIX mounting points
- Front headrests
- LED taillights
- Steering wheel: Multifunction steering wheel in leather, with paddle shifters
- "Premium" multifunction display with multicolor screen
- Fatigue detection
- Non-smoking version
- Emergency call service
- Package: Light and Sight Package "Plus"
- Proactive occupant protection system in conjunction with "Front Assist"
- Wheels: Tire Mobility Set omitted
- Gearshift knob in leather
- Keyless start system without safe locking
- Seat belts: Three-point automatic seat belt
- Seats: Lumbar support in the front
- Lane keeping assistant "Lane Assist"
- 12V power outlet on the rear of the center console
- Textile floor mats
- Warning tone and light for unfastened seat belts front and rear
- Airbag, head airbag system for front and rear passengers
- App-Connect
- Electrically adjustable and heated exterior mirrors, ambient lighting
- Hill start assist
- Chrome trim on the side windows
- black roof rails
- Tachometer
- Entry/warning lights in LED technology in the front doors
- Electronic parking brake including auto-hold function
- Automatic headlight control
- Remote release for luggage compartment lid
- Pedestrian detection
- Adjustable luggage compartment floor
- Rear window heated
- Interior lights with delayed shut-off and dimming function
- Rear headrests (3)
- LED fog lights and cornering lights
- LED headlights with daytime running lights
- Headlight range control
- Front center armrest, height and length adjustable, with storage box
- Mesh partition
- Emergency braking assistant "Front Assist" (for automatic distance control ACC up to 210 km/h)
- Upholstery: "Business" fabric
- Radio accessories: Digital radio reception DAB+
- Tire pressure monitoring system (passive)
- Rear bench seat, undivided, backrest asymmetrically split and foldable, with center armrest
- Power steering
- Seats: Comfort seats in the front
- Seats: Front seats are height-adjustable
- Start-stop system
- Telephone interface
- First aid kit, warning triangle and high-visibility vest
- Electronic immobilizer
- Central locking with remote control



Extra equipment

- Airbag: Driver's side knee airbag, rear side airbags and seatbelt pretensioners (airbag for driver and front passenger, with front passenger airbag deactivation, including driver's side knee airbag - three-point automatic seatbelts with pretensioners for the outer rear seats - side airbags for the outer rear seats, including front side airbags and head airbag system)
- Luggage net
- Tailgate with electric opening and closing, electric opening for luggage compartment cover (extendable and removable luggage compartment cover with electric opening - tailgate with electric opening and closing)
- Package: "Business Premium" package incl. navigation (from Business trim level) (2 USB-C ports in the front, USB-C charging socket in the rear, 230V socket, App-Connect incl. wireless, Apple CarPlay, Android Auto, "Travel Assist" driver assistance system and "Lane Assist" lane keeping assist system, Air Care Climatronic with 3-zone temperature control, active combination filter and rear controls, lumbar support in the front, electric on the driver's side, massage function on the driver's side, "Rear View" reversing camera, heated windshield washer nozzles, Comfort telephone interface, inductive charging function, heated front seats)
- Wheels: 4 light alloy wheels 8 J x 18 "Dartford" (AirStop tires 235/45 R 18, optimized for rolling resistance - With individual installation - Wheel locks with enhanced theft protection - Rear disc brakes, brake calipers in blue (only for GTE))
- Keyless locking and starting system "Keyless Access" with safe locking (automatic locking and starting system where the vehicle key must be carried but not handled - if you carry the vehicle key and approach the vehicle, it is automatically unlocked; the engine is conveniently started via a start button)
- "Comfort" telephone interface with inductive charging function (hands-free system)
- Towbar, foldable (with electric release)
- App-Connect Wireless (Volkswagen offers three interfaces for connecting smartphones with numerous possibilities: - Apple CarPlay - Android Auto from Google - MirrorLink)
- On-board tools and jack
- Anti-theft alarm system (interior monitoring, backup horn and tow-away protection - illuminated make-up mirror in the sun visors, extendable sun visors)
- Steering wheel: Multifunction leather steering wheel, heated, with paddle shifters
- Navigation system "Discover Media" incl. "Streaming & Internet" (4x20 watts, user interface with proximity sensor, dual tuner with phase diversity, vehicle menu, speed, volume adjustment, map, 2D display, tone control, 3-way TFT display with touchscreen operation, navigation "Discover Media" incl. "Streaming & Internet", MP3 radio, telephone contact addresses for navigation, telephone interface, 2 USB ports also for iPod/iPhone, traffic sign recognition "VW Media Control", We Connect Plus, 3 years, incl. We Connect route guidance, dynamic RDS, TMC tuner)
- Package: Winter (front windshield washer nozzles automatically heated - front seats heated)
- Proactive occupant protection system and lane change assistant "Side Assist" (Proactive occupant protection system in conjunction with "Front Assist" and "Side Assist" - lane change assistant "Side Assist" and parking assistant)
- Wheels: Winter wheels (additional), light alloy, "Helsinki" 6.5 J x 17 (AirStop winter tires 215/55 R 17 H)
- Rear side windows and rear window tinted
- Seats: Front passenger seat backrest folds down completely
- Voice control
- Auxiliary heating and ventilation (with radio remote control and timer)

Brief expert findings

| | |
|----------------------|---|
| Documents submitted | At the time of the inspection, the vehicle registration certificate Part 2 (title) was available, but the vehicle registration certificate Part 1 (document) was not. (Copy) |
| VIN comparison | The vehicle identification number (VIN) was read from the vehicle and its conformity with the submitted documents was confirmed by the undersigned during the inspection. |
| Inspection | The inspection conditions were sufficient for the assessment of the vehicle. No lifting equipment or pit was available for inspecting the vehicle. Therefore, inspection of the vehicle's underside was only possible to a limited extent. |
| Test drive | No test drive/shunting maneuver was carried out during the inspection of the vehicle. |
| Engine function test | An engine test run was performed. |



Value reducing factors

| No. | Component group | Description |
|-----|-----------------------------|--|
| 1 | Boot lid / rear door | Boot lid - Glued / labelled - De-glue / neutralise |
| 2 | Wheel / tyres | Alloy rim - rear left side - Scratch(es) - Loss in value |
| 3 | Rear bumper | Rear bumper - Scratch(es) - Smart repair |
| 4 | Side panel - rear left side | Sill - Dent / paintcoat damage - Repair and paint |
| 5 | Front bumper | Front bumper - Scratch(es) - Paint |
| 6 | Wheel / tyres | Alloy rim - front left side (- Materialabtrag) - Scratched - Replace |
| 7 | Wheel / tyres | Alloy rim - rear right side (- Materialabtrag) - Scratched - Replace |
| 8 | Vehicle glazing | Windscreen with lane departure assistant - Broken / torn - Replace |

Order/Scope of Order

An order was placed to prepare a sales report for the described vehicle. This report includes the following:

- Description of key vehicle information
- Documentation of equipment features
(*Delivery by third-party service providers*)
- Documentation of damage, defects, missing parts
- Documentation of prior damage, unrepaired prior damage, repainting
- A brief visual or functional inspection of the equipment details, if possible.
(*Functional testing of driver assistance systems is not included in the scope of services!*)
- a photographic documentation of the vehicle

Basis for the order

This product is based on the guidelines for vehicle returns and valuations published by Alphabet Fleet GmbH. The expert makes the specific findings in each individual case objectively, within the framework of the prescribed standards, based on their own expertise.

The vehicle inspection takes place in a fully assembled, unassembled state.

Damage or defects that can only be detected during disassembly/diagnostic work or through further investigation remain within the realm of prognostic risk. An increased risk exists due to concealed defects caused by fraudulent misrepresentation and which were not identifiable by the expert.

Damage or defects resulting from normal use or wear and tear of the vehicle will be accepted in accordance with the applicable standard.

There was no explicit identification or monetary consideration of the expected features within the product.

Features which, in their nature and extent, slightly exceed normal use but do not constitute unacceptable damage, will be documented and indicated as signs of wear, if applicable.

Damage or defects that, according to the applicable standard, can no longer be attributed to normal use or wear and tear are listed under "Value Reducing Factors" in the product description.

Depending on the product specification, a monetary ID can be provided. If this takes place, the costs can be 100% d or pro rata depending on the vehicle's age and mileage.

Previous damages

No apparent prior damage that had been repaired could be found on the vehicle.

Comments

- Die Unterbodenbesichtigung war nur ebenerdig & eingeschränkt möglich. Mehrkosten möglich.



Figure 1: Diagonal front (left)



Figure 2: Diagonal front (right)



Figure 3: Diagonal rear (left)



Figure 4: Diagonal rear (right)



Figure 5: Interior - front



Figure 6: Interior - rear



Figure 7: Instrument cluster



Figure 8: Instrument panel



Figure 9: Interior 360° view



Figure 10: Cargo area



Figure 11: VIN



Figure 12: Mounted tyres

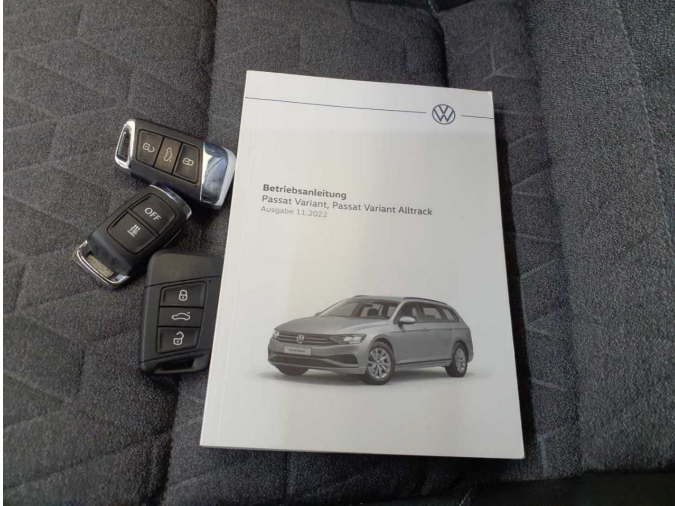


Figure 13: Documents



Figure 14: Documents



Figure 15: Additional tyres

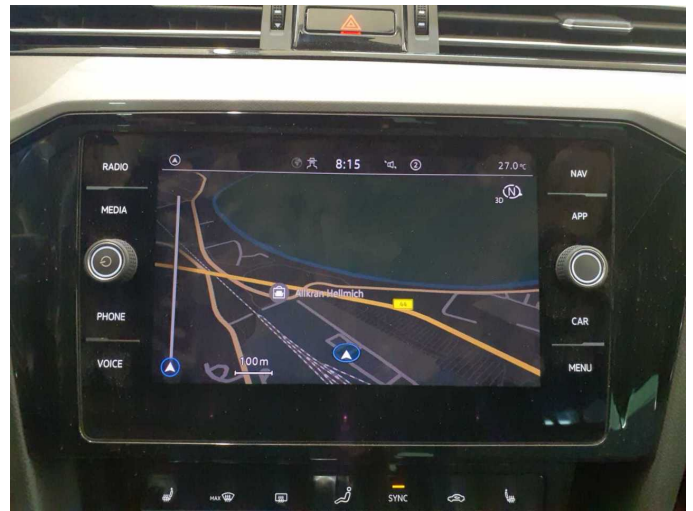


Figure 16: Navigation



Figure 17: Misc.

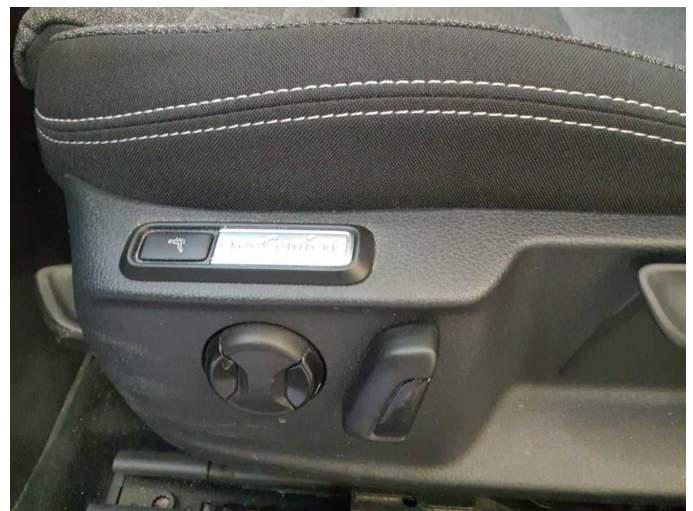


Figure 18: Misc.



Figure 19: Misc.



Figure 20: Misc.



Figure 21: Misc.

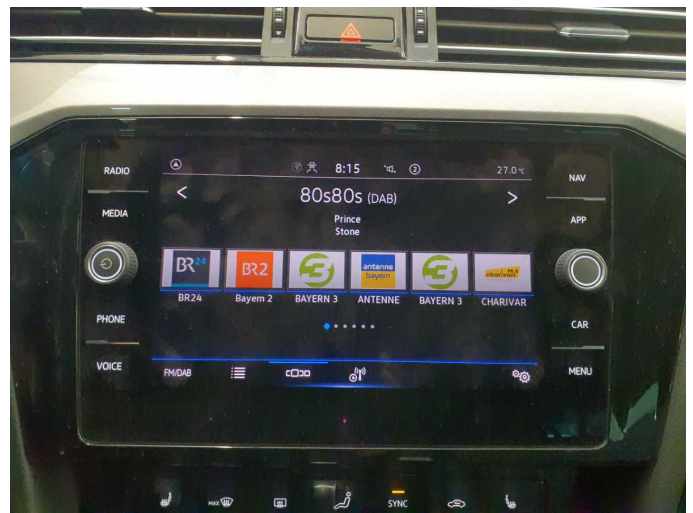


Figure 22: Misc.



Figure 23: Misc.



Figure 24: Misc.



Figure 25: Misc.



Figure 26: Misc.



Figure 27: Misc.



Figure 28: Misc.



Figure 29: Misc.



Figure 30: Misc.



Figure 31: Misc.



Damage 1: Boot lid / rear door: Boot lid - Glued / labelled - De-glue / neutralise



Damage 1: Boot lid / rear door: Boot lid - Glued / labelled - De-glue / neutralise



Damage 2: Wheel / tyres: Alloy rim - rear left side - Scratch(es) - Loss in value



Damage 2: Wheel / tyres: Alloy rim - rear left side - Scratch(es) - Loss in value



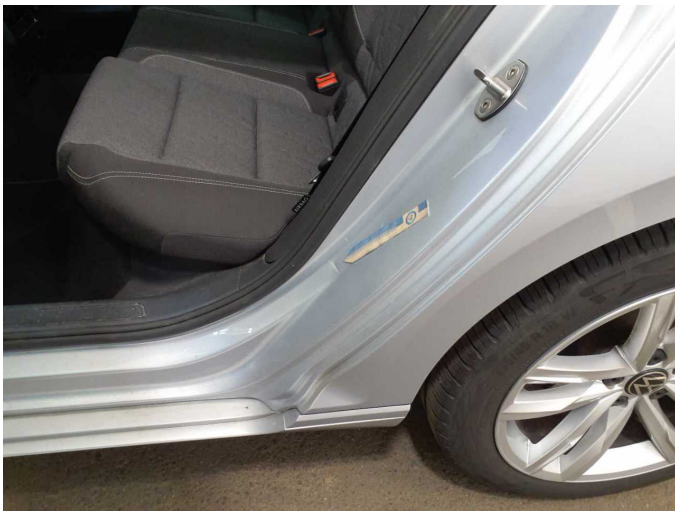
Damage 3: Rear bumper: Rear bumper - Scratch(es) - Smart repair



Damage 3: Rear bumper: Rear bumper - Scratch(es) - Smart repair



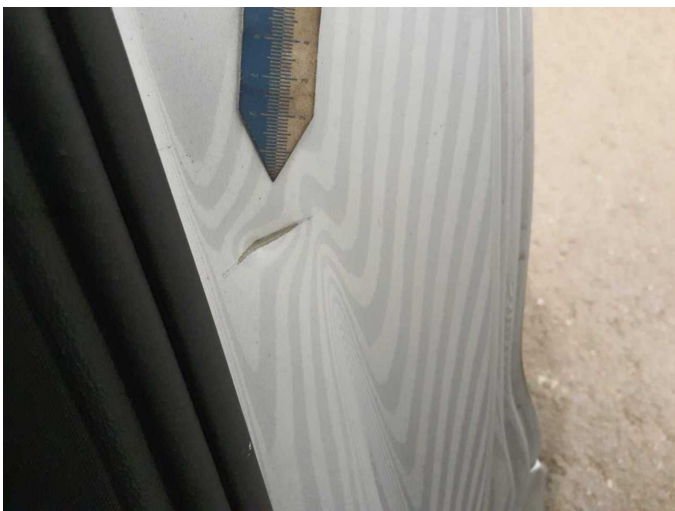
Damage 3: Rear bumper: Rear bumper - Scratch(es) - Smart repair



Damage 4: Side panel - rear left side: Sill - Dent / paintcoat damage - Repair and paint



Damage 4: Side panel - rear left side: Sill - Dent / paintcoat damage - Repair and paint



Damage 4: Side panel - rear left side: Sill - Dent / paintcoat damage - Repair and paint



Damage 5: Front bumper: Front bumper - Scratch(es) - Paint



Damage 5: Front bumper: Front bumper - Scratch(es) - Paint



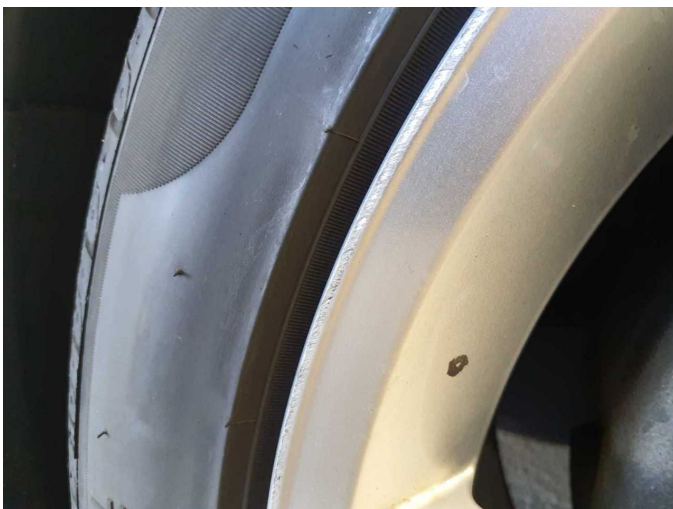
Damage 6: Wheel / tyres: Alloy rim - front left side (- Materialabtrag) - Scratched - Replace



Damage 6: Wheel / tyres: Alloy rim - front left side (- Materialabtrag) - Scratched - Replace



Damage 6: Wheel / tyres: Alloy rim - front left side (- Materialabtrag) - Scratched - Replace



Damage 6: Wheel / tyres: Alloy rim - front left side (- Materialabtrag) - Scratched - Replace



Damage 7: Wheel / tyres: Alloy rim - rear right side (- Materialabtrag) - Scratched - Replace



Damage 7: Wheel / tyres: Alloy rim - rear right side (- Materialabtrag) - Scratched - Replace



Damage 7: Wheel / tyres: Alloy rim - rear right side (- Materialabtrag) - Scratched - Replace



Damage 7: Wheel / tyres: Alloy rim - rear right side (- Materialabtrag) - Scratched - Replace



Damage 7: Wheel / tyres: Alloy rim - rear right side (- Materialabtrag) - Scratched - Replace



Damage 8: Vehicle glazing: Windscreen with lane departure assistant - Broken / torn - Replace



Damage 8: Vehicle glazing: Windscreen with lane departure assistant - Broken / torn - Replace



Wartungshistorie

(gemäß Auftraggeber Informationen)

Fahrgestellnummer: WVWZZZ3CZPE056706
Hersteller / Modell: VOLKSWAGEN VOLKSWAGEN Passat Variant 2.0 TDI SCR DSG
Business

| Datum | KM-Stand | Beschreibung |
|------------|----------|--|
| 07.10.2025 | 88.104 | Bremsflüssigkeit; Bremsflüssigkeit ern; Kraftstofffilter ern; Luftfiltereinsatz ern; Motoröl b. Wartung; Ölfilter ern; Regelwartungsdienst; Systemtest/ Eigendiagnose; Wartung Sonstiges |
| 09.12.2024 | 57.691 | Bremse Sonstiges; Bremsklötze hinten; Bremsscheiben hinten; Bremsscheiben vorne; Motoröl b. Wartung; Ölfilter ern; Regelwartungsdienst; Wartung Sonstiges |
| 20.02.2024 | 28.852 | Motoröl b. Wartung; Ölfilter ern; Regelwartungsdienst; Wartung Sonstiges |