

Expertise

Protocol number: 46282597
Order No. / Reference: 26571386
Inspection date: 30 Jun 2026

Manufacturer: Renault

Model: Kangoo Rapid (ENERGY) TCe 115 (Start & Stop) Extra

VIN: VF1FW54J260522689



Vehicle details

Manufacturer / Type / Model / Equipment

Renault Kangoo Rapid (ENERGY) TCe 115 (Start & Stop) Extra

Vehicle Identification number VF1FW54J260522689

Mileage (Read) 10,946 km

First registration 27 Jun 2018

Number of holders 1

Next periodical technical inspection 08/2026
(Report not on hand)

Power / Engine displacement 84 kw / 1,197 ccm

Fuel type / Cylinder Petrol / 4

Gearbox / Number of gears Manual / 6

Type of drive Front drive

Type of vehicle Van

Colour / colour code Galaxie-Grau

Doors / Seats 3 / 2

Upholstery type Cloth

Colour of upholstery Black-Grey



Vehicle details

Maintenance booklet / proof	digital proof / complete	Next maintenance in	29,297 km
Last service on / at	08/2025 at 10,242 km		
Key is / should be	2 / 2	FZG documents	ZB#2 (B) was available (copy), ZB#1 (S) was not available.
		Letter No.	EY006838
Previous damage / Accident	None detectable	Repainting	None detectable
Inspection conditions	sufficient	Lifting equipment / pit	yes
Test drive	Not performed	Engine function test	Performed
Manufacturer key number/ type code number	3333 / BCD 00087		
Emission standard	EURO6;X;PI/CI; N1 II	fine dust sticker	
Permitted total weight	1,920 kg	Empty weight	

Tyres

Mounted tyres

#	Tyre size	Type of tyre	Manufacturer	Tread depth
1)	195/65 R15 91T	Winter tyres on Steel	Continental	5mm / 5mm
2)	195/65 R15 91T	Winter tyres on Steel	Continental	5mm / 5mm

Additional tyres

#	Tyre size	Type of tyre	Manufacturer	Tread depth
1)	195/65 R15 95T	Summer tyres on Steel	Continental	4mm / 4mm
2)	195/65 R15 95T	Summer tyres on Steel	Continental	4mm / 4mm

Replacement

Typ	Tyre size	Type of tyre	Manufacturer	Tread depth
E	195/65 R15 95T	Summer tyres on Steel	Michelin	6 mm

Legend: Tread depth information for the left tire is listed first, for the right tire it is listed second on the axle in the direction of travel.



Equipment

Standard equipment

- Storage compartment in front doors and dashboard
- ABS with EBV
- Exterior mirrors, electrically adjustable and heated
- Brake assist
- Digital clock in the instrument panel
- ESP with Extended Grip and Hill Start Assist
- Transmission: 6-speed manual transmission
- Rear door, opening angle 180°, with window
- Paint finish: Solid
- Engine: Start & Stop automatic
- Upholstery: Cloth
- Tires: Spare wheel on steel rim
- Protective bar behind the driver's seat
- Side protection reinforcement
- Engine protection
- Central locking with radio remote control
- Storage shelf above the front seats
- Driver's side airbag
- Outdoor temperature display
- Brakes: Rear disc brakes
- Tachometer
- electric front windows
- Glove compartment, closed
- Front headrests (2), height adjustable
- Height-adjustable steering wheel
- Package: Storage Package
- Radio installation with roof antenna
- Wheels: Tire size 195/65 R 15
- Side protection strips
- Power steering
- Electronic immobilizer
- Switchable ECO mode

Extra equipment

- Airbag: Passenger airbag
- Trailer hitch
- Rear parking sensors
- Wooden floor
- Package: Easy Package (electrically adjustable, heated and folding exterior mirrors - light and rain sensor)
- Package: Vario package (Vario partition - fold-down passenger seat - ladder flap)
- Seats: Driver's seat height adjustable
- Lashing eyes in the cargo area floor
- Airbag: Front side airbags
- Steel roof gallery
- Rubber mats, 2-piece set
- Fog light
- Package: Sound & Climate Bluetooth (Air conditioning with pollen filter - CD radio MP3 with Bluetooth hands-free system, USB, AUX-In)
- Sliding door, right with window
- Seat heating on driver's side
- Winter tires 195/65 R15T

Brief expert findings

Documents submitted	At the time of the inspection, the vehicle registration certificate Part 2 (title) was available, but the vehicle registration certificate Part 1 (document) was not. (Copy)
VIN comparison	The vehicle identification number (VIN) was read from the vehicle and its conformity with the submitted documents was confirmed by the undersigned during the inspection.
Inspection	The inspection conditions were sufficient for the assessment of the vehicle. Lifting equipment and/or a pit were available for examining the vehicle.
Test drive	No test drive/shunting maneuver was carried out during the inspection of the vehicle.
Engine function test	An engine test run was performed.



Value reducing factors

No.	Component group	Description
1	Misc.	Main inspection - No evidence - No deduction
2	Mudguard - right side	Mudguard - right side - Scratch(es) - Smart repair
3	Side panel - rear right side	Side panel - Dent / paintcoat damage - Smart repair
4	Bonnet	Bonnet - Scratched - Paint
5	Boot lid / rear door	Rear door - right side - Scratch(es) - Paint
6	Sliding door, right	Sliding door - Dent / paintcoat damage - Repair and paint
7	Door - front right side	Door - Dent / paintcoat damage - Repair and paint
8	Door - front left side	Door - Dent / paintcoat damage - Repair and paint
9	Body	Body - Damage by hail - repair according to calculation

Wear and tear

No.	Component group	Description
1	Interior	Interior - Scratch(es) - No deduction

The vehicle shows signs of wear and tear commensurate with its age and use.

Order/Scope of Order

An order was placed to prepare a sales report for the described vehicle. This report includes the following:

- Description of key vehicle information
- Documentation of equipment features
(Delivery by third-party service providers)
- Documentation of damage, defects, missing parts
- Documentation of prior damage, unrepaired prior damage, repainting
- A brief visual or functional inspection of the equipment details, if possible.
(Functional testing of driver assistance systems is not included in the scope of services!)
- a photographic documentation of the vehicle

Basis for the order

This product is based on the guidelines for vehicle returns and valuations of light commercial vehicles published by Alphabet Fleet Management GmbH. The expert makes the specific findings in each individual case objectively, within the framework of the prescribed standards, based on their own expertise.

The vehicle inspection takes place in a fully assembled, unassembled state.

Damage or defects that can only be detected during disassembly/diagnostic work or through further investigation remain within the realm of prognostic risk. An increased risk exists due to concealed defects caused by fraudulent misrepresentation and which were not identifiable by the expert.

Damage or defects resulting from normal use or wear and tear of the vehicle will be accepted in accordance with the applicable standard.

There was no explicit identification or monetary consideration of the expected features within the product.

Features which, in their nature and extent, slightly exceed normal use but do not constitute unacceptable damage, will be documented and indicated as signs of wear, if applicable.

Damage or defects that, according to the applicable standard, can no longer be attributed to normal use or wear and tear are listed under "Value Reducing Factors" in the product description.

Depending on the product specification, a monetary ID can be provided. If this takes place, the costs can be 100% d or pro rata depending on the vehicle's age and mileage.



Previous damages

No apparent prior damage that had been repaired could be found on the vehicle.



Figure 1: Diagonal front (left)



Figure 2: Diagonal front (right)



Figure 3: Diagonal rear (left)



Figure 4: Diagonal rear (right)

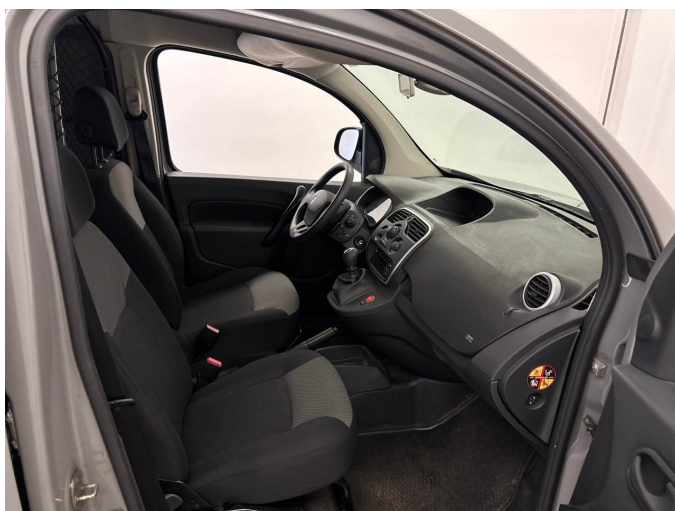


Figure 5: Interior - front

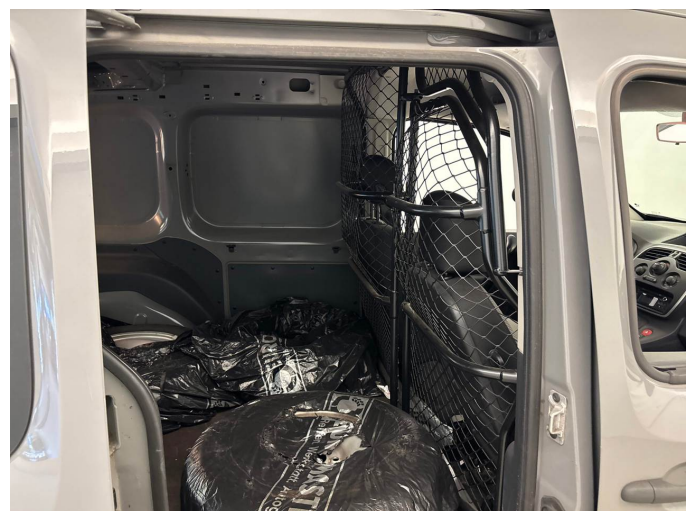


Figure 6: Interior - rear



Figure 7: Instrument cluster



Figure 8: Instrument panel



Figure 9: Interior 360° view

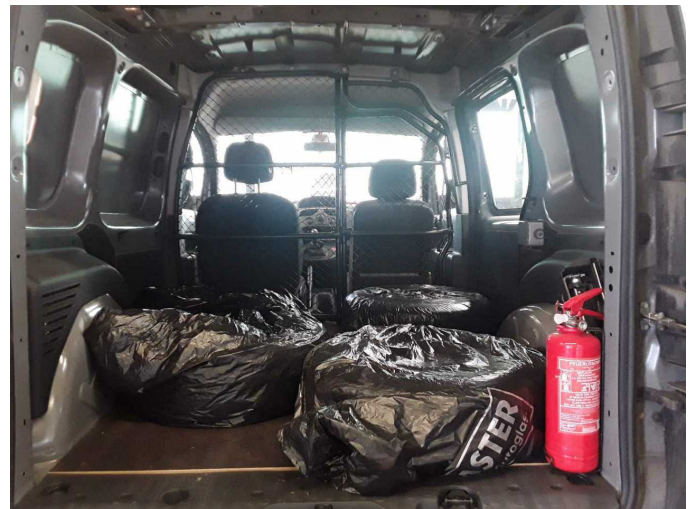


Figure 10: Cargo area

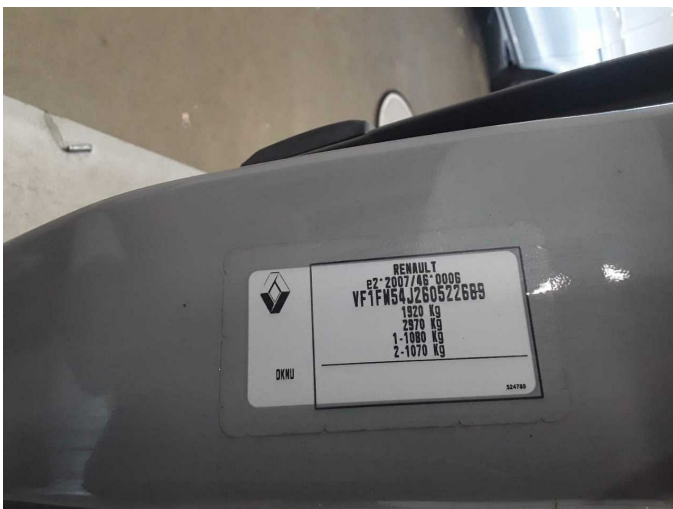


Figure 11: VIN



Figure 12: Mounted tyres



Figure 13: Documents

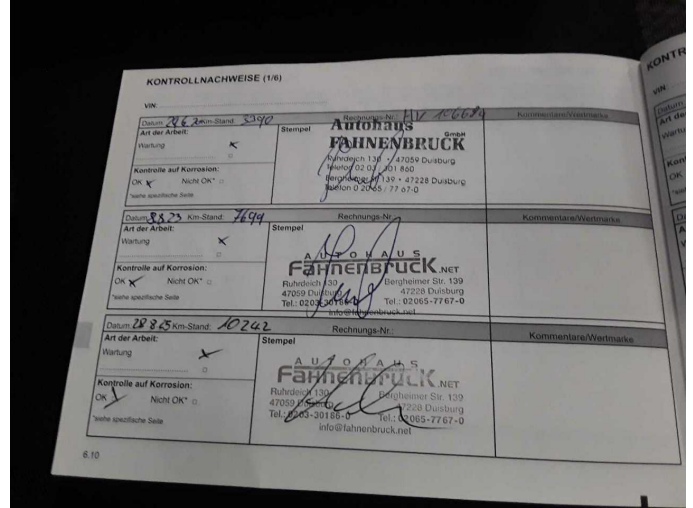


Figure 14: Documents

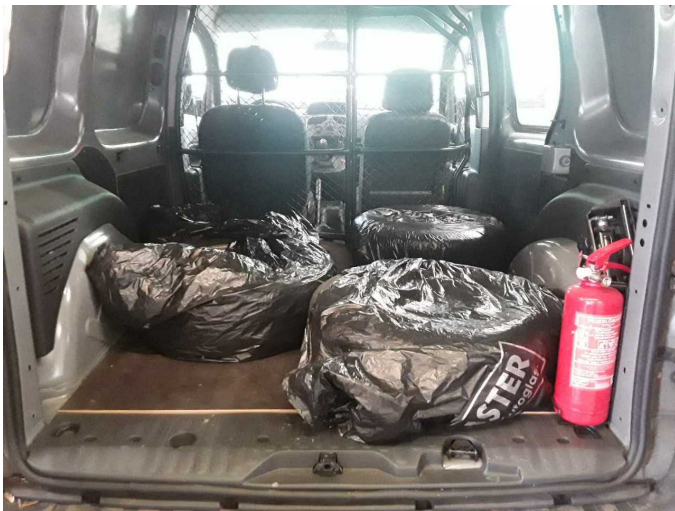


Figure 15: Additional tyres



Figure 16: Additional tyres



Figure 17: Misc.



Figure 18: Misc.



Figure 19: Misc.



Figure 20: Misc.

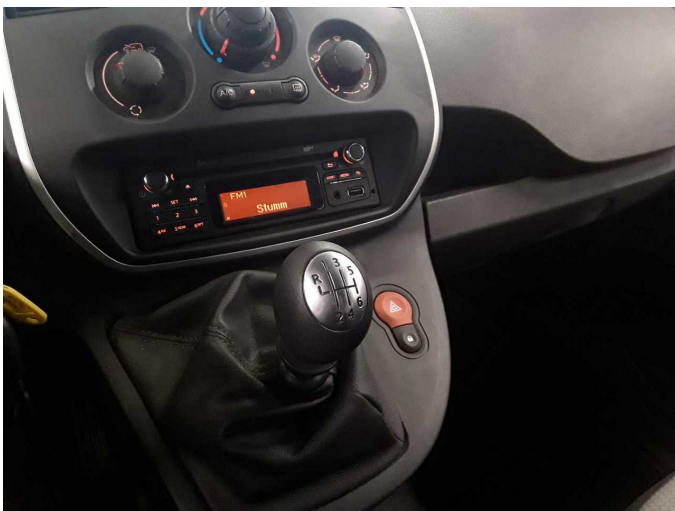


Figure 21: Misc.



Figure 22: Misc.

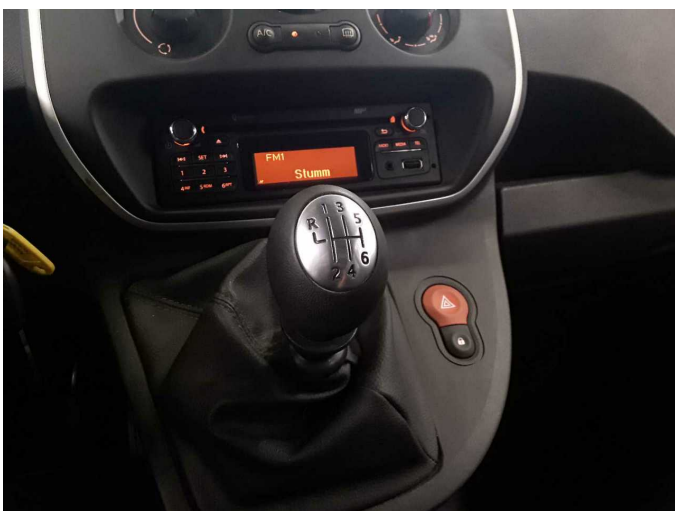


Figure 23: Misc.



Damage 2: Mudguard - right side: Mudguard - right side - Scratch(es) - Smart repair



Damage 2: Mudguard - right side: Mudguard - right side - Scratch(es) - Smart repair



Damage 3: Side panel - rear right side: Side panel - Dent / paintcoat damage - Smart repair



Damage 3: Side panel - rear right side: Side panel - Dent / paintcoat damage - Smart repair



Damage 3: Side panel - rear right side: Side panel - Dent / paintcoat damage - Smart repair



Damage 4: Bonnet: Bonnet - Scratched - Paint



Damage 4: Bonnet: Bonnet - Scratched - Paint



Damage 4: Bonnet: Bonnet - Scratched - Paint



Damage 5: Boot lid / rear door: Rear door - right side - Scratch(es) - Paint



Damage 5: Boot lid / rear door: Rear door - right side - Scratch(es) - Paint



Damage 5: Boot lid / rear door: Rear door - right side - Scratch(es) - Paint



Damage 6: Sliding door, right: Sliding door - Dent / paintcoat damage - Repair and paint



Damage 6: Sliding door, right: Sliding door - Dent / paintcoat damage - Repair and paint



Damage 7: Door - front right side: Door - Dent / paintcoat damage - Repair and paint



Damage 7: Door - front right side: Door - Dent / paintcoat damage - Repair and paint



Damage 7: Door - front right side: Door - Dent / paintcoat damage - Repair and paint



Damage 8: Door - front left side: Door - Dent / paintcoat damage - Repair and paint



Damage 8: Door - front left side: Door - Dent / paintcoat damage - Repair and paint



Damage 9: Body: Body - Damage by hail - repair according to calculation



Damage 9: Body: Body - Damage by hail - repair according to calculation



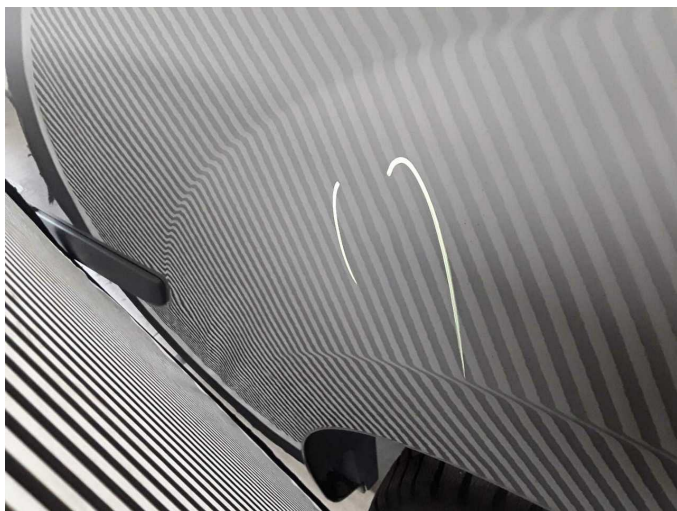
Damage 9: Body: Body - Damage by hail - repair according to calculation



Damage 9: Body: Body - Damage by hail - repair according to calculation



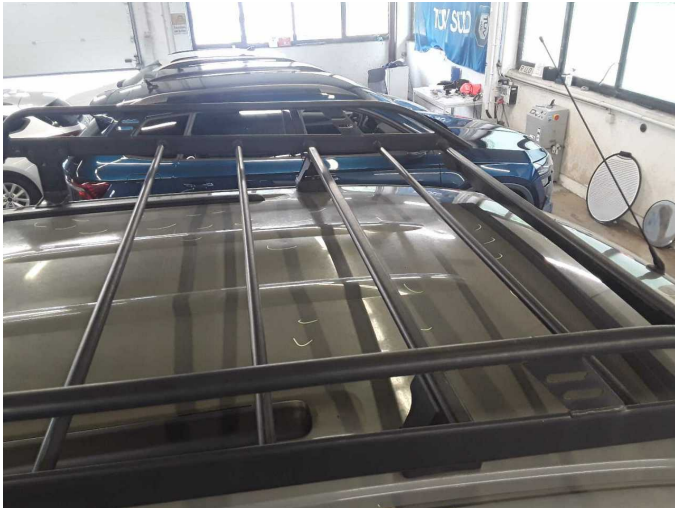
Damage 9: Body: Body - Damage by hail - repair according to calculation



Damage 9: Body: Body - Damage by hail - repair according to calculation



Damage 9: Body: Body - Damage by hail - repair according to calculation



Damage 9: Body: Body - Damage by hail - repair according to calculation



Damage 9: Body: Body - Damage by hail - repair according to calculation



Damage 9: Body: Body - Damage by hail - repair according to calculation



Damage 9: Body: Body - Damage by hail - repair according to calculation



Damage 9: Body: Body - Damage by hail - repair according to calculation



Damage 9: Body: Body - Damage by hail - repair according to calculation



Damage 9: Body: Body - Damage by hail - repair according to calculation



Wartungshistorie

(gemäß Auftraggeber Informationen)

Fahrgestellnummer: VF1FW54J260522689
Hersteller / Modell: RENAULT RENAULT Kangoo Rapid ENERGY TCe 115 (Start & Stop) Extra

Datum	KM-Stand	Beschreibung
28.08.2025	10.244	Motoröl b. Wartung; Ölfilter ern; Regelwartungsdienst; Wartung Sonstiges
05.09.2024	8.847	Systemtest/Eigendiagnose
07.08.2024	8.736	AU; Systemtest/Eigendiagnose
27.02.2024	7.704	Wartung Sonstiges
08.08.2023	7.704	Motoröl b. Wartung; Ölfilter ern; Regelwartungsdienst; Wartung Sonstiges
15.11.2022	6.782	Batterie ern
08.07.2022	6.452	AU; Bremsflüssigkeit ern; Luftfiltereinsatz ern; Motoröl b. Wartung; Regelwartungsdienst; Zündkerzen ern
17.09.2020	3.834	Getriebeöl nachfüllen/prü; Motoröl b. Wartung; Vorschalldämpfer ern
30.06.2020	3.390	Kleine Inspektion; AU; Motoröl b. Wartung