

Expertise

Protocol number: 46157813
Order No. / Reference: 26546417
Inspection date: 24 Jun 2026

Manufacturer: Mercedes-Benz

Model: EQB 300 4Matic AMG Line

VIN: W1N9M0JB1PN035650



Vehicle details

Manufacturer / Type / Model / Equipment

Mercedes-Benz EQB 300 4Matic AMG Line

Vehicle Identification number W1N9M0JB1PN035650

Mileage (Read) 63,488 km

First registration 31 May 2023

Number of holders 1

Next periodical technical inspection 05/2026
(Report not on hand)

Power / Engine displacement 139 kw / 0 ccm

Fuel type / Cylinder Electric / 0

Gearbox / Number of gears Direct drive / 1

Type of drive All-wheel drive

Type of vehicle Saloon car

Colour / colour code Iridiumsilber Metallic

Doors / Seats 5 / 5

Upholstery type Alcantara / Leather

Colour of upholstery Black-Red



Vehicle details

Maintenance booklet / proof	digital proof / complete	Next maintenance in	55 Tag(e)
Last service on / at	07/2025 at 48,595 km		
Key is / should be	2 / 2	FZG documents	ZB#2 (B) was available (copy), ZB#1 (S) was not available.
		Letter No.	GS681530
Previous damage / Accident	None detectable	Repainting	None detectable
Inspection conditions	sufficient	Lifting equipment / pit	yes
Test drive	Not performed	Engine function test	Performed
Manufacturer key number/ type code number	2222 / BDI 00041		
Emission standard	2017/1151;WLTP;reine Elektrofz	fine dust sticker	
Permitted total weight	2,770 kg	Empty weight	

Tyres

Mounted tyres

#	Tyre size	Type of tyre	Manufacturer	Tread depth
1)	235/50 R19 103T	Summer tyres on Light alloy	Bridgestone	4mm / 4mm
2)	235/50 R19 103T	Summer tyres on Light alloy	Bridgestone	4mm / 4mm

Additional tyres

#	Tyre size	Type of tyre	Manufacturer	Tread depth
1)	215/60 R18 102T	Winter tyres on Light alloy	Continental	6mm / 6mm
2)	215/60 R18 102T	Winter tyres on Light alloy	Continental	6mm / 6mm

Legend: Tread depth information for the left tire is listed first, for the right tire it is listed second on the axle in the direction of travel.



Equipment

Standard equipment

- Storage compartment in center console with roller blind
- Airbag: Driver and passenger side
- Airbag: Sidebag for driver and front passenger (combined thorax/pelvisbag)
- Active Lane Keeping Assist
- Ambient lighting in 64 colors
- AMG rear apron in diffuser look with chrome trim
- AMG-specific black panel radiator grille
- AMG-specific front apron
- Rear armrest
- Roof rails in polished aluminum
- Third brake light in LED technology
- EASY-PACK tailgate
- Electric windows, front and rear
- Luggage net on driver and passenger seatbacks
- Transmission: Direct drive
- rear window wiper
- Climate: THERMATIC automatic climate control
- Headrests (5)
- Charging cable for wallboxes and public charging stations, 5m, smooth
- Charging system: Alternating current charging system (AC charging) up to 11 kW (3-phase)
- Air vents in silver chrome with outer ring in silver chrome
- Mercedes-Benz emergency call system
- Navigation accessories: Pre-installation for Live Traffic Information
- Navigation: Hard disk navigation
- Package: Light and Visibility Package
- Upholstery: ARTICO leatherette/MICROCUT microfiber
- Radio accessories: Digital radio
- Tire pressure monitoring system (TPMS)
- Rear view camera
- Side panels in black grained finish with chrome insert
- Seats: 4-way lumbar support for driver
- Seats: Sports seats
- TIREFIT with tire inflation compressor
- Immobiliser
- Decorative elements spiral optics backlit
- Adaptive Highbeam Assist
- Airbag: Kneebag for driver
- Airbag: Windowbag
- Active Brake Assist
- Acoustic environmental protection
- AMG floor mats in black velour with "AMG" lettering
- AMG pedal assembly made of brushed stainless steel with rubber studs
- Anti-lock braking system (ABS)
- Electrically adjustable exterior mirrors
- Double cup holder
- DYNAMIC SELECT
- Door sills with model-specific lettering, illuminated and with interchangeable cover
- Speed Limit Assistant
- Rear window heated
- Black fabric headliner
- Communication module (LTE) for the use of Mercedes me connect services
- Charging system: Direct current charging system (DC charging)
- LED High Performance Headlights
- Steering wheel: Multifunction sports steering wheel in Nappa leather
- Navigation accessories: Extended MBUX functions
- Navigation accessories: Pre-installation for remote and navigation services
- Package: Cargo space
- Package: Seating comfort
- Radio: MBUX multimedia system
- Radio accessories: Touchpad
- Remote and Charging Services Premium
- Windscreen wipers with rain sensor
- Three-point seat belts on all seats
- Seats: Rear seat backrests foldable
- Cruise control
- High-visibility vest for drivers
- Central locking



Extra equipment

- Blind spot assist (visual and acoustic warning system)
- Cargo net (This feature protects you from loose items in the luggage compartment. The cargo net is very easy to use. You can attach or remove it in just a few steps.)
- Exit warning function
- Heated seats for driver and front passenger
- Package: Advanced Plus (Fully digital instrument display, high resolution 10.25" - CENTRAL MEDIA DISPLAY 10.25" - Mirror package: interior and exterior mirrors automatically dimming, exterior mirrors electrically folding, ambient lighting for the exterior mirrors to illuminate the entry area - Parking package with reversing camera - Active Park Assist with PARKTRONIC - THERMOTRONIC automatic climate control - KEYLESS-GO Comfort package: KEYLESS-GO function, EASY-PACK tailgate - Wireless charging system for mobile devices in the front - Advanced sound system - 10 speakers, 225 W, Blind Spot Assist)
- Package: Parking package with 360° camera (Active Parking Assist including PARKTRONIC with visual and acoustic warnings of detected obstacles, notification of detected parking spaces in the instrument cluster via arrow display, convenient parking in and out of parallel and perpendicular parking spaces - 360° camera with four networked close-range cameras in the radiator grille, in the tailgate release handle and in the exterior mirror housings, displaying all four sides of the vehicle and visualizing the vehicle and its surroundings from a bird's-eye view in the multimedia system display)
- Paint finish: Metallic
- Phone accessories: Smartphone integration (Smartphone integration merges your mobile phone with the media system via Apple CarPlay and Android Auto. This gives you convenient access to your smartphone's most important applications. You can also use third-party apps like Spotify quickly and easily. Features include: app display, access to current software and data (e.g., for navigation, traffic information, contacts, messaging, telephony, media), and voice control of smartphone functions.)
- Steering: Direct steering
- Chassis: Adjustable damping (The chassis with adjustable damping offers this fascinating range. The DYNAMIC SELECT rocker switch in the center console selects the program and thus the characteristic. It's as if you had two chassis in one car – refined sportiness.)
- Package: Night for AMG Line Exterior (front and rear aprons and side panels with inserts in high-gloss black; exterior mirror housings in high-gloss black, painted in body color with cosmos black paint finish; beltline trim strip and window line trim strip in high-gloss black; roof rails in black; heat-insulating dark-tinted glass from the B-pillar; trim strip on the B-pillar in black; 45.7 cm (18") AMG light-alloy wheels in 5-spoke design, aerodynamically optimized, painted in high-gloss black and polished)
- Pre-installation for digital key handover (Share your vehicle with friends and family members more easily than ever before – no matter where you are. You retain full control and decide conveniently via app whether you consent to its use. You can also unlock your vehicle remotely via the mobile application. Only then will a stored key be activated. Service is free of charge for 3 years from activation.)
- Seats: 3rd row of seats for 2 people (3rd row of seats for two additional, full-size seats (usable up to 1.68 meters tall) fully foldable via loops on the back of the seats, extendable/retractable rear headrests for the third row of seats, two cup holders between the seats, seat belts with pyrotechnic retraction and linear force limiter for the third row of seats, storage compartment with rubberized insert on the left and right in the load compartment lining, each with USB charging socket, ISOFIX and TOP Tether, EASY-ENTRY)
- Sunroof: Panoramic sunroof (large glass module made of heat-insulating, tinted safety glass - mesh wind deflector in the front area - electric sunshade with one-touch operation - comprehensive protection concept: - anti-pinch protection - automatic rain closing - PRE-SAFE closing function (only in conjunction with PRE-SAFE system))
- Wheels: 48.3 cm (19") AMG light-alloy wheels, 4-piece set in 5-twin-spoke design (aerodynamically optimized, painted in high-gloss black and polished with 235/50 R 19 tires on 7.5 J x 19 ET 53.5 rims)

Brief expert findings

Documents submitted	At the time of the inspection, the vehicle registration certificate Part 2 (title) was available, but the vehicle registration certificate Part 1 (document) was not. (Copy)
VIN comparison	The vehicle identification number (VIN) was read from the vehicle and its conformity with the submitted documents was confirmed by the undersigned during the inspection.
Inspection	The inspection conditions were sufficient for the assessment of the vehicle. Lifting equipment and/or a pit were available for examining the vehicle.
Test drive	No test drive/shunting maneuver was carried out during the inspection of the vehicle.
Engine function test	An engine test run was performed.



Value reducing factors

No.	Component group	Description
1	Interior	Interior (Hundegeuruch) - Odour - Ozone treatment
2	Body	Body - Glued / labelled - De-glue / neutralise
3	Interior	Interior (Hundehaare) - Soiled - Conditioning
4	Wheel / tyres	Alloy rim - front left side - Scratched - Loss in value
5	Front bumper	Front bumper - Scratched - Paint

Wear and tear

No.	Component group	Description
1	Bonnet	Bonnet - Stone chips - No deduction
2	Interior	Interior - Scratch(es) - No deduction
3	Vehicle glazing	Windscreen - Stone chips - No deduction
4	2nd wheel set	2 alloy rims - Scratch(es) - No deduction

The vehicle shows signs of wear and tear commensurate with its age and use.

Order/Scope of Order

An order was placed to prepare a sales report for the described vehicle. This report includes the following:

- Description of key vehicle information
- Documentation of equipment features
(*Delivery by third-party service providers*)
- Documentation of damage, defects, missing parts
- Documentation of prior damage, unrepaired prior damage, repainting
- A brief visual or functional inspection of the equipment details, if possible.
(*Functional testing of driver assistance systems is not included in the scope of services!*)
- a photographic documentation of the vehicle

Basis for the order

This product is based on the guidelines for vehicle returns and valuations published by Alphabet Fleet GmbH. The expert makes the specific findings in each individual case objectively, within the framework of the prescribed standards, based on their own expertise.

The vehicle inspection takes place in a fully assembled, unassembled state.

Damage or defects that can only be detected during disassembly/diagnostic work or through further investigation remain within the realm of prognostic risk. An increased risk exists due to concealed defects caused by fraudulent misrepresentation and which were not identifiable by the expert.

Damage or defects resulting from normal use or wear and tear of the vehicle will be accepted in accordance with the applicable standard.

There was no explicit identification or monetary consideration of the expected features within the product.

Features which, in their nature and extent, slightly exceed normal use but do not constitute unacceptable damage, will be documented and indicated as signs of wear, if applicable.

Damage or defects that, according to the applicable standard, can no longer be attributed to normal use or wear and tear are listed under "Value Reducing Factors" in the product description.

Depending on the product specification, a monetary ID can be provided. If this takes place, the costs can be 100% d or pro rata depending on the vehicle's age and mileage.

Previous damages

No apparent prior damage that had been repaired could be found on the vehicle.



Comments

- Winterradsatz ist kein Bestandteil des Auslieferungsumfangs.



Figure 1: Diagonal front (left)



Figure 2: Diagonal front (right)



Figure 3: Diagonal rear (left)



Figure 4: Diagonal rear (right)



Figure 5: Interior - rear



Figure 6: Instrument cluster



Figure 7: Instrument panel



Figure 8: Interior 360° view



Figure 9: Cargo area



Figure 10: VIN



Figure 11: Mounted tyres



Figure 12: Documents



Figure 13: Additional tyres



Figure 14: Navigation



Figure 15: Misc.



Figure 16: Misc.

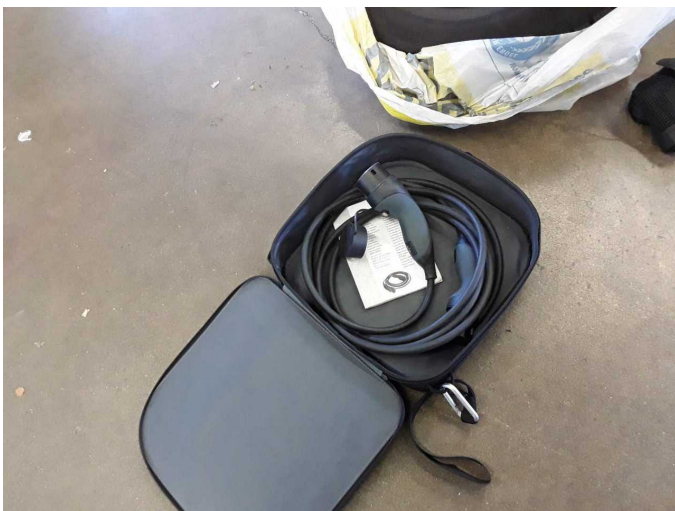


Figure 17: Misc.



Figure 18: Misc.



Figure 19: Misc.



Figure 20: Misc.

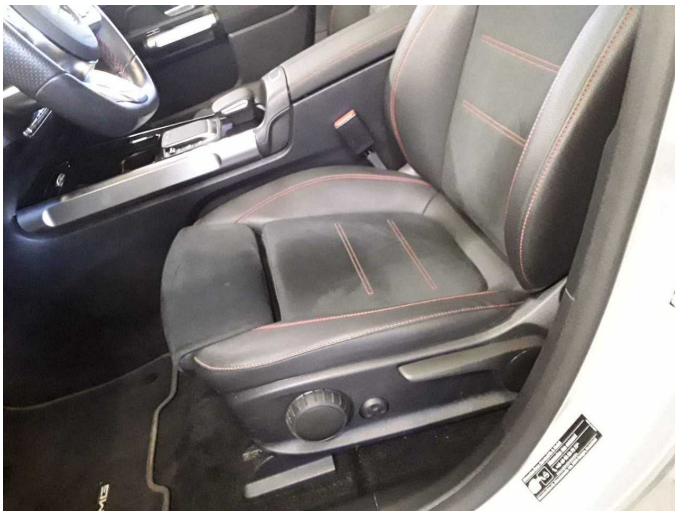


Figure 21: Misc.



Figure 22: Misc.



Figure 23: Misc.



Figure 24: Misc.



Figure 25: Misc.



Figure 26: Misc.



Figure 27: Misc.



Figure 28: Misc.



Figure 29: Misc.



Figure 30: Misc.



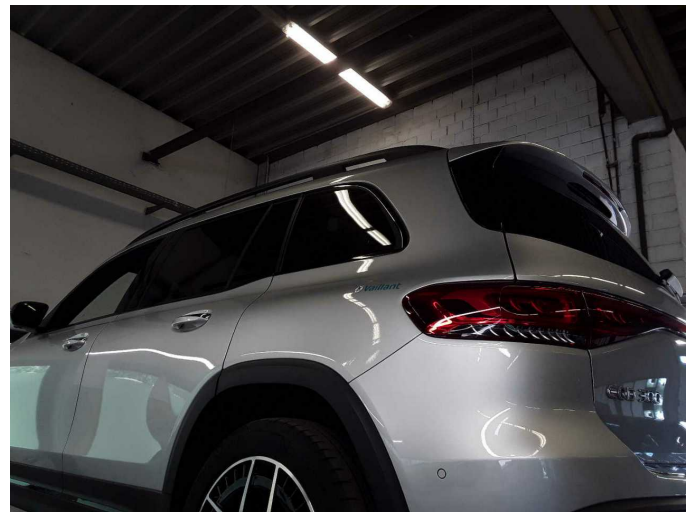
Figure 31: Misc.



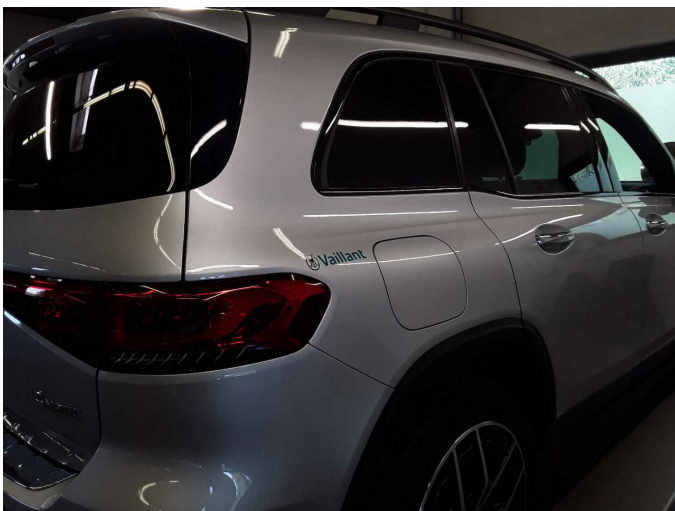
Figure 32: Misc.



Figure 33: Misc.



Damage 2: Body: Body - Glued / labelled - De-glug / neutralise



Damage 2: Body: Body - Glued / labelled - De-glug / neutralise



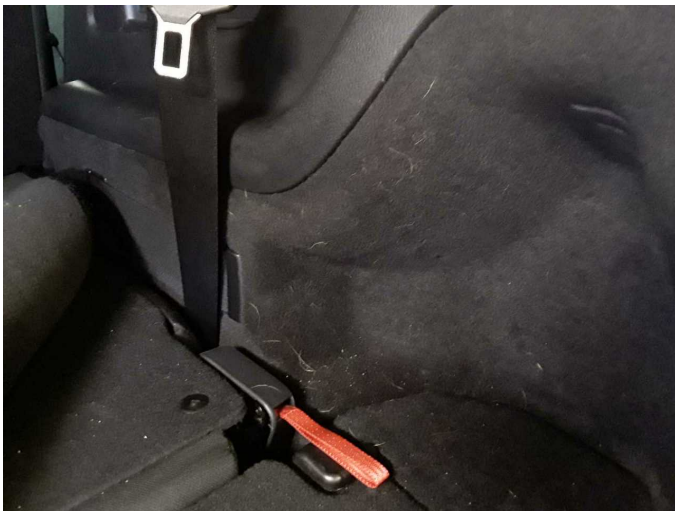
Damage 3: Interior: Interior (Hundehaare) - Soiled - Conditioning



Damage 3: Interior: Interior (Hundehaare) - Soiled - Conditioning



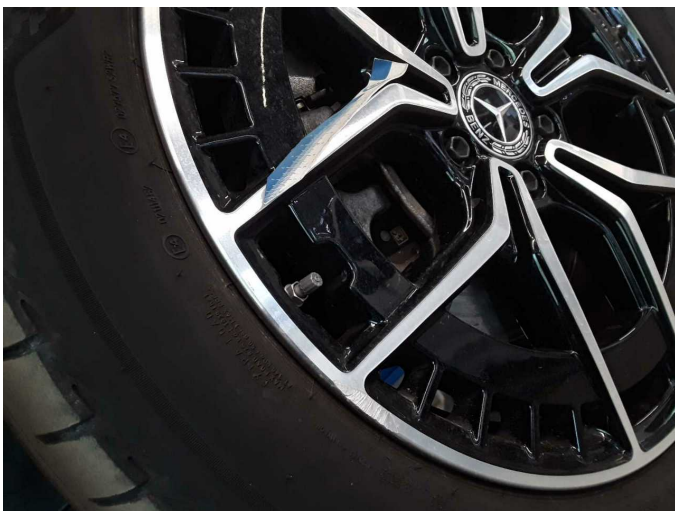
Damage 3: Interior: Interior (Hundehaare) - Soiled - Conditioning



Damage 3: Interior: Interior (Hundehaare) - Soiled - Conditioning



Damage 4: Wheel / tyres: Alloy rim - front left side - Scratched - Loss in value



Damage 4: Wheel / tyres: Alloy rim - front left side - Scratched - Loss in value



Damage 5: Front bumper: Front bumper - Scratched - Paint



Damage 5: Front bumper: Front bumper - Scratched - Paint



Wear and tear 1: Bonnet: Bonnet - Stone chips - No deduction



Wear and tear 1: Bonnet: Bonnet - Stone chips - No deduction



Wartungshistorie

(gemäß Auftraggeber Informationen)

Fahrgestellnummer: W1N9M0JB1PN035650

Hersteller / Modell: MERCEDES-BENZ MERCEDES-BENZ EQB 300 4Matic AMG Line

Datum	KM-Stand	Beschreibung
21.08.2025	49.492	Reparatur Sonstiges; Systemtest/Eigendiagnose
30.07.2025	48.595	Regelwartungsdienst
08.08.2024	25.154	Regelwartungsdienst