

## Expertise

Protocol number: 46278698  
Order No. / Reference: 26577525  
Inspection date: 1 Jul 2026

Manufacturer: Mercedes-Benz

Model: EQE 500 4Matic AMG Line

VIN: W1KEG2CB5PF023099



### Vehicle details

#### Manufacturer / Type / Model / Equipment

Mercedes-Benz EQE 500 4Matic AMG Line

**Vehicle Identification number** W1KEG2CB5PF023099

**Mileage (Read)** 58,051 km

**First registration** 16 Feb 2023

**Number of holders** 1

**Power / Engine displacement** 135 kw /

**Fuel type / Cylinder** Electric / 0

**Gearbox / Number of gears** Direct drive / 1

**Type of drive** All-wheel drive

**Type of vehicle** Saloon car

**Colour / colour code** Graphitgrau Metallic

**Doors / Seats** 4 / 5

**Upholstery type** Cloth / leather  
combination

**Colour of upholstery** Black-Red



## Vehicle details

<b>Maintenance booklet / proof</b>	digital proof / complete	<b>Next maintenance in</b>	681 Tag(e)
<b>Last service on / at</b>	04/2026 at 56,436 km		
<b>Key is / should be</b>	2 / 2	<b>FZG documents</b>	ZB#2 (B) was available (copy), ZB#1 (S) was not available.
		<b>Letter No.</b>	GQ139294
<b>Previous damage / Accident</b>	None detectable	<b>Repainting</b>	None detectable
<b>Inspection conditions</b>	sufficient	<b>Lifting equipment / pit</b>	yes
<b>Test drive</b>	Not performed	<b>Engine function test</b>	Performed
<b>Manufacturer key number/ type code number</b>	2222 / BIO 00323		
<b>Emission standard</b>	2017/1151;WLTP;reine Elektrofz	<b>fine dust sticker</b>	
<b>Permitted total weight</b>	2,970 kg	<b>Empty weight</b>	

## Tyres

Mounted tyres				
#	Tyre size	Type of tyre	Manufacturer	Tread depth
1)	255/45 R19 104Y	Summer tyres on Light alloy	Pirelli	5mm / 5mm
2)	255/45 R19 104Y	Summer tyres on Light alloy	Pirelli	4mm / 4mm

Replacement				
Typ	Tyre size	Type of tyre	Manufacturer	Tread depth
	Tirefit	Expiration date 02/2028		

**Legend: Tread depth information for the left tire is listed first, for the right tire it is listed second on the axle in the direction of travel.**



## Equipment

### Standard equipment

- ABS - Anti-lock Braking System
- Airbag: Automatic passenger airbag deactivation
- Airbag: Windowbag all around
- 4MATIC all-wheel drive
- AMG floor mats
- Traction control (ASR)
- Black panel radiator grille with central Mercedes star
- DYNAMIC SELECT
- Electronic Stability Program (ESP)
- Chassis: Comfort chassis
- Rear seat belt status indicator in the instrument cluster
- Transmission: Direct drive
- Instrument panel and door sills in ARTICO man-made leather, space grey
- Rear headrests (3)
- Charging cable for wallbox and public charging station, 5m, smooth, 11kW
- Charging system: AC charging system 11kW
- LED taillights in 3D helix design
- Steering: Rear-axle steering with 4.5° steering angle adjustment
- Center console in high-gloss black
- Navigation accessories: Pre-installation for navigation services
- Navigation: MBUX Navigation Premium
- Package: AMG Line Exterior
- Package: Parking package with reversing camera
- PRE-SAFE system
- Radio: Extended MBUX functions
- Radio accessories: Digital radio
- Tire pressure monitoring system
- Remote Services Plus
- Remote and Charging Services Premium
- Wheels: 48.3 cm (19") AMG light-alloy wheels in a 5-twin-spoke design
- Seats: i-Size child seat attachment
- Seats: Sports seats
- TIREFIT
- URBAN GUARD Vehicle Protection Plus
- Pre-installation for digital key handover
- High-visibility vest for drivers
- Airbag for driver and front passenger
- Airbag: Kneebag for driver
- Acoustic environmental protection
- Ambient lighting
- AMG sports pedal assembly made of brushed stainless steel with black rubber studs
- Brake assist, active
- Illuminated door sills with "Mercedes-Benz" lettering
- Driver display with 25.4 cm (10.25") screen diagonal
- Flex Bottle Holder
- Speed Limit Assistant
- Black fabric headliner
- Climate: Pre-conditioning
- THERMATIC automatic climate control with 2 climate zones
- Charging cable for household socket, 5m, smooth
- Charging system: Direct current charging system (DC charging)
- LED High Performance Headlights
- Steering wheel: Multifunction sports steering wheel in Nappa leather
- Mercedes-Benz emergency call system
- Navigation accessories: Pre-installation for Live Traffic Information
- Navigation: Hard disk navigation
- Package: Advanced Package
- Package: Interior lighting package
- Upholstery: ARTICO leatherette/MICROCUT microfiber, two-tone
- Radio: MBUX multimedia system
- Radio accessories: Communication module (LTE Advanced) for using Mercedes me connect
- Remote Services Premium
- Remote and extended Charging Services Premium
- Heated windshield washer system
- Seats: Rear seat backrests foldable 40/20/40 split
- Seats: Heated seats for driver and front passenger
- Cruise control
- Door center panels and transition from the center console to the instrument panel in microfiber MICROCUT
- Pre-installation for remote and navigation services



## Extra equipment

- DIGITAL LIGHT with projection function in conjunction with Advanced/Advanced Plus package (HD system with projection module and background module MULTIBEAM LED: Using data from camera, sensors and navigation, the brightness value for each individual pixel is calculated almost in real time; projection function for lines, symbols, animations; adaptive high beam assist Plus ULTRA RANGE high beam; topography compensation; cornering lights with roundabout and intersection radio; active curve lighting with predictive control; extended fog lights, city lights, country road lights, motorway lights, motorway high beams and bad weather lights; front light strip)
- Sunroof: Electric panoramic sunroof (in glass version with comfort and automatic rain closing, electric sunshade as well as anti-pinch protection and PRE-SAFE closing function)
- Decorative elements and center console: Linden wood, linestructure anthracite, open-pore
- Heated windshield
- Paint finish: Metallic
- Steering: Rear-axle steering with 10° steering angle adjustment (At speeds below 60 km/h, the rear wheels steer in the opposite direction to the front wheels – when parking, by up to 10° against the front axle angle. Above 60 km/h, the rear wheels steer up to 2.5° in the same direction as the front wheels.)
- Package: Premium Package (Advanced Plus Package contents - Active ambient lighting - Burmester surround sound system - THERMOTRONIC automatic climate control - Driving Assistance Package Plus: Active Assistance - DISTRONIC distance control, speed limit, traffic jam, steering, braking, lane keeping, blind spot PRE-SAFE PLUS PRE-SAFE Impulse Side - DIGITAL LIGHT - Parking Package with 360° camera - URBAN GUARD vehicle protection Plus - MBUX Augmented Reality for navigation)

## Brief expert findings

Documents submitted	At the time of the inspection, the vehicle registration certificate Part 2 (title) was available, but the vehicle registration certificate Part 1 (document) was not. (Copy)
VIN comparison	The vehicle identification number (VIN) was read from the vehicle and its conformity with the submitted documents was confirmed by the undersigned during the inspection.
Inspection	The inspection conditions were sufficient for the assessment of the vehicle. Lifting equipment and/or a pit were available for examining the vehicle.
Test drive	No test drive/shunting maneuver was carried out during the inspection of the vehicle.
Engine function test	An engine test run was performed.

## Wear and tear

No.	Component group	Description
1	Front bumper	Front bumper - Stone chips - No deduction
2	Bonnet	Bonnet - Stone chips - No deduction
3	Vehicle glazing	Windscreen - Stone chips - No deduction

The vehicle shows signs of wear and tear commensurate with its age and use.

## Order/Scope of Order

An order was placed to prepare a sales report for the described vehicle. This report includes the following:

- Description of key vehicle information
- Documentation of equipment features  
(*Delivery by third-party service providers*)
- Documentation of damage, defects, missing parts
- Documentation of prior damage, unrepaired prior damage, repainting
- A brief visual or functional inspection of the equipment details, if possible.  
(*Functional testing of driver assistance systems is not included in the scope of services!*)
- a photographic documentation of the vehicle



## Basis for the order

This product is based on the guidelines for vehicle returns and valuations published by Alphabet Fleet GmbH. The expert makes the specific findings in each individual case objectively, within the framework of the prescribed standards, based on their own expertise.

The vehicle inspection takes place in a fully assembled, unassembled state.

Damage or defects that can only be detected during disassembly/diagnostic work or through further investigation remain within the realm of prognostic risk. An increased risk exists due to concealed defects caused by fraudulent misrepresentation and which were not identifiable by the expert.

Damage or defects resulting from normal use or wear and tear of the vehicle will be accepted in accordance with the applicable standard.

There was no explicit identification or monetary consideration of the expected features within the product.

Features which, in their nature and extent, slightly exceed normal use but do not constitute unacceptable damage, will be documented and indicated as signs of wear, if applicable.

Damage or defects that, according to the applicable standard, can no longer be attributed to normal use or wear and tear are listed under "Value Reducing Factors" in the product description.

Depending on the product specification, a monetary ID can be provided. If this takes place, the costs can be 100% d or pro rata depending on the vehicle's age and mileage.

## Previous damages

No apparent prior damage that had been repaired could be found on the vehicle.

## Comments

Wartungshistorie gemäß Auftraggeber Informationen.



Figure 1: Diagonal front (left)



Figure 2: Diagonal front (right)



Figure 3: Diagonal rear (left)



Figure 4: Diagonal rear (right)



Figure 5: Interior - front



Figure 6: Interior - rear



Figure 7: Instrument cluster



Figure 8: Instrument panel



Figure 9: Interior 360° view



Figure 10: Cargo area



Figure 11: VIN



Figure 12: Mounted tyres



Figure 13: Documents



Figure 14: Navigation



Figure 15: Misc.



Figure 16: Misc.



Figure 17: Misc.

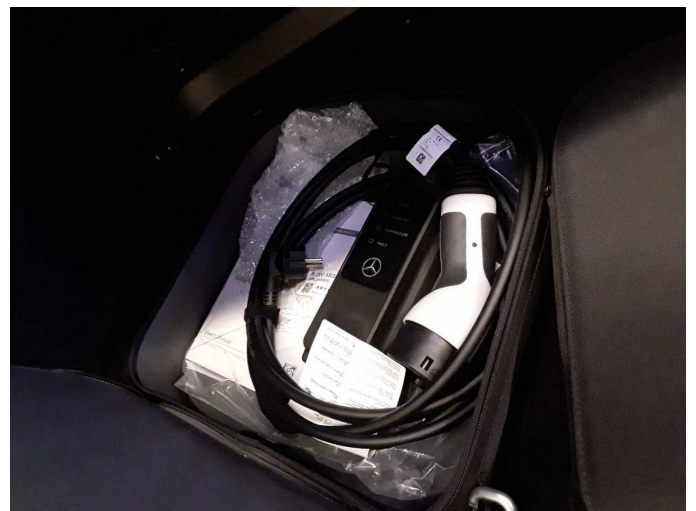


Figure 18: Misc.

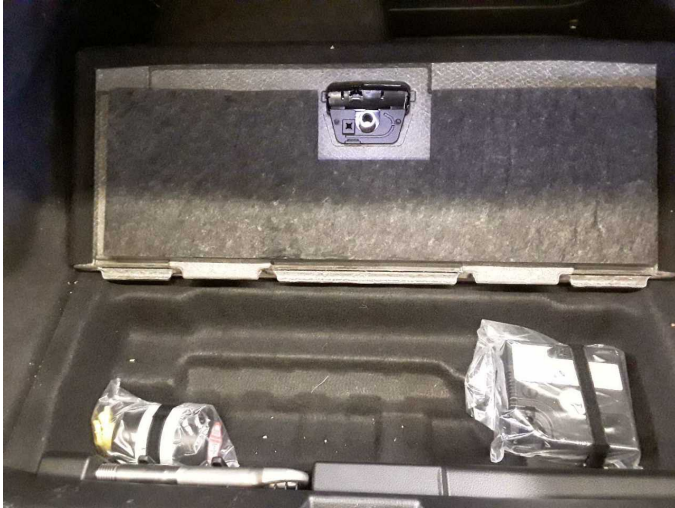


Figure 19: Misc.



Figure 20: Misc.



Figure 21: Misc.



Figure 22: Misc.



Figure 23: Misc.



Figure 24: Misc.



Figure 25: Misc.



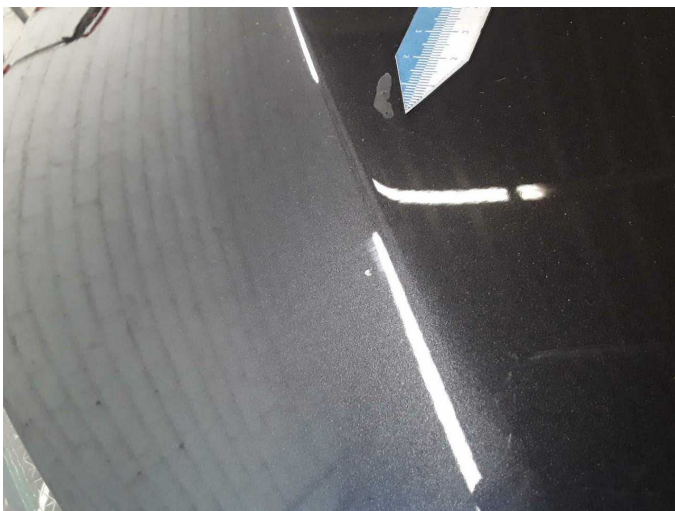
Figure 26: Misc.



Figure 27: Misc.



Figure 28: Misc.



Wear and tear 2: Bonnet: Bonnet - Stone chips - No deduction



# Wartungshistorie

(gemäß Auftraggeber Informationen)

Fahrgestellnummer: W1KEG2CB5PF023099

Hersteller / Modell: MERCEDES-BENZ MERCEDES-BENZ EQE 500 4Matic AMG Line

Datum	KM-Stand	Beschreibung
29.04.2026	56.436	Regelwartungsdienst
15.10.2024	27.264	Regelwartungsdienst