

Expertise

Protocol number: 45935457
Order No. / Reference: 26490388
Inspection date: 15 Jun 2026

Manufacturer: Volkswagen

Model: Tiguan Allspace 2.0 TDI SCR DSG Life

VIN: WVGZZZ5N2RM095278



Vehicle details

Manufacturer / Type / Model / Equipment

Volkswagen Tiguan Allspace 2.0 TDI SCR DSG Life

Vehicle Identification number WVGZZZ5N2RM095278

Mileage (Read) 68,015 km

First registration 9 Apr 2024

Number of holders 1

Power / Engine displacement 110 kw / 1,968 ccm

Fuel type / Cylinder Diesel / 4

Gearbox / Number of gears Automatic / 7

Type of drive Front drive

Type of vehicle SUV

Colour / colour code Deep Black Perleffekt
(C9X)

Doors / Seats 5 / 5

Upholstery type Cloth

Colour of upholstery Black



Vehicle details

Maintenance booklet / proof	digital proof / complete	Next maintenance in	16,300 km
Last service on / at	03/2026 at 67,094 km		
Key is / should be	2 / 2	FZG documents	ZB#2 (B) was available (copy), ZB#1 (S) was not available.
		Letter No.	HA926088
Previous damage / Accident	Detectable	Repainting	None detectable
Inspection conditions	sufficient	Lifting equipment / pit	yes
Test drive	Not performed	Engine function test	Performed
Manufacturer key number/ type code number	0603 / BZG 33273		
Emission standard	EURO6;WLTP;AP;PI/CI; M, N1 I	fine dust sticker	
Permitted total weight	2,340 kg	Empty weight	

Tyres

Mounted tyres

#	Tyre size	Type of tyre	Manufacturer	Tread depth
1)	235/50 R19 99V	Summer tyres on Light alloy	Hankook	5mm / 5mm
2)	235/50 R19 99V	Summer tyres on Light alloy	Hankook	5mm / 5mm

Additional tyres

#	Tyre size	Type of tyre	Manufacturer	Tread depth
1)	215/65 R17 99H	Winter tyres on Light alloy	Pirelli	6mm / 6mm
2)	215/65 R17 99H	Winter tyres on Light alloy	Pirelli	6mm / 6mm

Legend: Tread depth information for the left tire is listed first, for the right tire it is listed second on the axle in the direction of travel.



Equipment

Standard equipment

- Storage compartments in the overhead console
- Airbag for driver and front passenger including knee airbag on the driver's side (passenger airbag deactivation - knee airbag on the driver's side)
- Electrically adjustable and heated exterior mirrors
- Exterior mirror housings painted silver
- Chrome trim on the side windows
- Decorative inserts "Horizont Black" (for instrument panel and front door panels)
- Parking aid (acoustic warning signals for obstacles in the front and rear area)
- Electronic stability program with counter-steering support (including ABS, ASR, EDS, MSR and trailer stabilization)
- Electric windows front and rear
- Windscreen made of laminated safety glass, heat and sound insulating
- Luggage compartment floor height adjustable in 2 stages
- Transmission: 7-speed DSG
- Tailgate with electric opening and closing, adjustable opening angle
- Interior mirror automatically dimming
- Air conditioning "Air Care Climatronic" (3-zone temperature control - allergen filter - rear controls)
- Front headrests (safety-optimized - adjustable lengthwise and height)
- Illuminated makeup mirrors in the sun visors
- Non-smoking version (storage compartment and 12V socket at the front)
- Upholstery: Cloth
- Proactive occupant protection system in conjunction with "Front Assist"
- Rain sensor
- Gearshift knob in leather
- Electromechanical power steering (speed-dependent control)
- Lane keeping assistant "Lane Assist"
- 12-volt power outlet (on the rear center console and in the luggage compartment)
- Bumpers in body color (lower bumper parts black)
- First aid kit, warning triangle and high-visibility vest
- Prepared for later activation: Navigation function "Discover Media" incl. "Streaming & Internet"
- Central locking without safe locking, with remote control and 2 remote keys
- Distraction and fatigue detection
- Airbag: Head airbag system for front and rear passengers including front side airbags
- Adaptive Cruise Control (ACC) "stop & go" with speed limiter
- third brake light
- Silver anodized roof rails
- Diesel particulate filter
- Display: Digital Cockpit Pro, multicolor, various selectable info profiles
- Electronic parking brake including auto-hold function
- Automatic headlight control with LED daytime running lights ("Coming home" and "Leaving home" function)
- High beam control Light Assist
- Pedestrian detection
- Luggage compartment lighting (additional, removable and usable as a flashlight)
- Glove compartment (with cooling option)
- Rear window heated
- Rear window wiper with intermittent function
- ISOFIX mounting points for attaching 2 child seats to the rear seats (also for i-Size child seats)
- Rear headrests (3)
- LED reading lights, 2 in the front and 2 in the rear
- Light in the front footwell
- Armrest - centre, rear
- Emergency braking assistant "Front Assist"
- Emergency call service (valid for 10 years from initial delivery, subject to availability of required mobile networks)
- Radio
- Radio accessories: Digital radio reception DAB+
- Wheels: Tire Mobility Set omitted
- Drawers under the front seats
- Seat belts: Three-point automatic seat belts with belt tensioners for the outer rear seats
- Start-stop system with brake energy recuperation
- Power outlet: 2 USB-C ports on the front (charging power up to 45 W)
- Textile floor mats front and rear
- Traffic sign recognition
- Electronic immobilizer
- Green thermal insulation glazing, sides and rear



Extra equipment

- Airbag: Side airbags for the outer seats of the 2nd row.
- Driving profile selection (possibility to set different vehicle settings: Comfort, Normal, Sport, Eco, Individual - adaptable vehicle systems include: engine, adaptive chassis control DCC, DSG, steering, start-stop system, cornering lights and "Dynamic Light Assist", automatic distance control ACC, air conditioning)
- Electrically adjustable, folding and heated exterior mirrors (with passenger-side mirror lowering function)
- Foldable towbar (electric release)
- Navigation system "Discover Pro" incl. "Streaming & Internet" (8 speakers - App-Connect Wireless for Apple CarPlay and Android Auto - Digital radio reception DAB+ - Navigation system "Discover Pro" incl. "Streaming & Internet" - Radio - Voice control - Traffic sign recognition)
- Package: Ambient lighting package (30-color ambient lighting - applications on mirror adjustment and window regulator switches, door pull handles - "Barrel Craft" decorative inlays for instrument panel and front door trim - illuminated aluminum front door sill trims)
- Package: Sport package (progressive steering - sport suspension)
- Package: Winter additionally with heated outer rear seats (Air Care Climatronic air conditioning with active combination filter, rear controls and 3-zone temperature control - windshield washer nozzles automatically heated at the front - front seats and outer rear seats heated)
- Park Assist system including parking aid
- Radio accessories: "Harman Kardon" sound system (8+1 speakers - 480 watts total power - digital 16-channel amplifier - subwoofer)
- Surround view "Area View" (incl. reversing camera "Rear View")
- Wheels: Alloy (4) "Victoria Falls" 7 J x 19 (AirStop tires 235/50 R 19 - Wheel locks with enhanced theft protection)
- Windows: Rear side windows and rear window tinted
- Anti-theft alarm system with safe locking (anti-theft alarm system with interior monitoring, backup horn and tow-away protection, central locking with safe locking, remote control and 2 remote folding keys)
- LED matrix headlights - IQ.LIGHT (Dynamic Light Assist high beam control - Dynamic headlight range control with dynamic cornering lights - LED taillights, dark red - Bad weather light and cornering light - IQ.LIGHT - LED matrix headlights with LED daytime running lights, cornering lights and dynamic turn signals)
- Mesh partition
- Package: "Easy Open & Close" with safe locking mechanism ("Easy Open & Close" - tailgate with sensor-controlled opening and closing, with remote unlocking - keyless locking and starting system "Keyless Access" with safe locking mechanism)
- Package: Business Premium incl. Navigation (DSG) (2 USB-C ports in the front, 1 USB-C charging port on the rear center console - multifunction leather steering wheel, heated, with shift paddles - automatically heated windshield washer nozzles in the front - voice control - "Comfort" telephone interface with inductive charging function - heated front seats)
- Paint finish: Pearl effect
- Panoramic tilt/slide sunroof with panoramic roof at the rear (2 LED reading lights at the front and 2 at the rear - panoramic tilt/slide sunroof with panoramic roof at the rear)
- Seats: ergoActive front seats (front passenger seat backrest not foldable - ergoActive front seats height-adjustable, seat and backrest tilt adjustable, thigh support longitudinally adjustable - front lumbar support electrically adjustable and with massage function - seat center panels of the front seats and the outer rear seats in microfleece "ArtVelours" - top comfort seats in front)
- Tire pressure monitoring system (informs the driver about the current tire pressure before and during the journey - the driver is informed if the tire pressure is too low or if there is a rapid loss of pressure)

Brief expert findings

Documents submitted	At the time of the inspection, the vehicle registration certificate Part 2 (title) was available, but the vehicle registration certificate Part 1 (document) was not. (Copy)
VIN comparison	The vehicle identification number (VIN) was read from the vehicle and its conformity with the submitted documents was confirmed by the undersigned during the inspection.
Inspection	The inspection conditions were sufficient for the assessment of the vehicle. Lifting equipment and/or a pit were available for examining the vehicle.
Test drive	No test drive/shunting maneuver was carried out during the inspection of the vehicle.
Engine function test	An engine test run was performed.



Value reducing factors

No.	Component group	Description
1	Wing mirror - right side	Cap - Scratch(es) - Smart repair
2	Door - rear left side	Door - Scratch(es) - Paint
3	Door - front left side	Door - Scratch(es) - Paint
4	Vehicle glazing	Windscreen - Stone chips - Replace

Wear and tear

No.	Component group	Description
1	Body	Body (Waschstraßenkratzer) - Scratch(es) - No deduction
2	Rear bumper	Rear bumper (Ladekante) - Scratch(es) - No deduction
3	Side panel - rear left side	Sill - Scratch(es) - No deduction
4	Trim / covers	Floor mats (VL) - Holes - No deduction

The vehicle shows signs of wear and tear commensurate with its age and use.

Previous damages

No.	Previous damage	Extent of damage (Net)
1	Side - left, Provided by user / customer	2.574,34 €

Order/Scope of Order

An order was placed to prepare a sales report for the described vehicle. This report includes the following:

- Description of key vehicle information
- Documentation of equipment features
(*Delivery by third-party service providers*)
- Documentation of damage, defects, missing parts
- Documentation of prior damage, unrepaired prior damage, repainting
- A brief visual or functional inspection of the equipment details, if possible.
(*Functional testing of driver assistance systems is not included in the scope of services!*)
- a photographic documentation of the vehicle

Basis for the order

This product is based on the guidelines for vehicle returns and valuations published by Alphabet Fleet GmbH. The expert makes the specific findings in each individual case objectively, within the framework of the prescribed standards, based on their own expertise.

The vehicle inspection takes place in a fully assembled, unassembled state.

Damage or defects that can only be detected during disassembly/diagnostic work or through further investigation remain within the realm of prognostic risk. An increased risk exists due to concealed defects caused by fraudulent misrepresentation and which were not identifiable by the expert.

Damage or defects resulting from normal use or wear and tear of the vehicle will be accepted in accordance with the applicable standard.

There was no explicit identification or monetary consideration of the expected features within the product.

Features which, in their nature and extent, slightly exceed normal use but do not constitute unacceptable damage, will be documented and indicated as signs of wear, if applicable.

Damage or defects that, according to the applicable standard, can no longer be attributed to normal use or wear and tear are listed under "Value Reducing Factors" in the product description.

Depending on the product specification, a monetary ID can be provided. If this takes place, the costs can be 100% d or pro rata depending on the vehicle's age and mileage.



Previous damages

According to available information previous damages were repaired at the vehicle. Traces of repairs, which allow conclusions about the area of repair, were not recognizable during the inspection.

Comments

Der beiliegende Winterradsatz ist kein Bestandteil der Ausstattung.



Figure 1: Diagonal front (left)



Figure 2: Diagonal front (right)



Figure 3: Diagonal rear (left)



Figure 4: Diagonal rear (right)



Figure 5: Interior - front



Figure 6: Interior - rear



Figure 7: Instrument cluster



Figure 8: Instrument panel



Figure 9: Interior 360° view



Figure 10: Cargo area

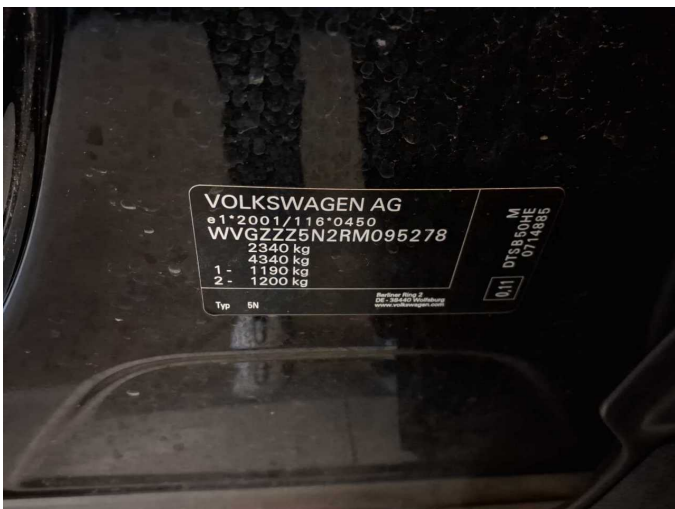


Figure 11: VIN



Figure 12: Mounted tyres



Figure 13: Documents



Figure 14: Documents



Figure 15: Additional tyres

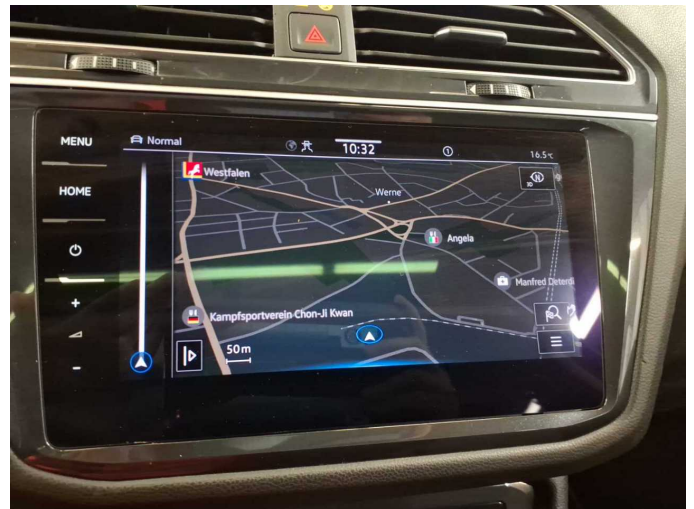


Figure 16: Navigation



Figure 17: Misc.



Figure 18: Misc.



Figure 19: Misc.



Figure 20: Misc.



Figure 21: Misc.



Figure 22: Misc.

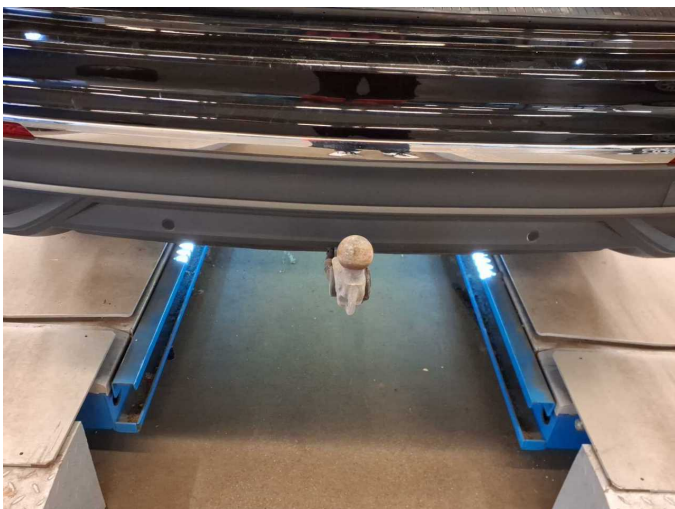


Figure 23: Misc.

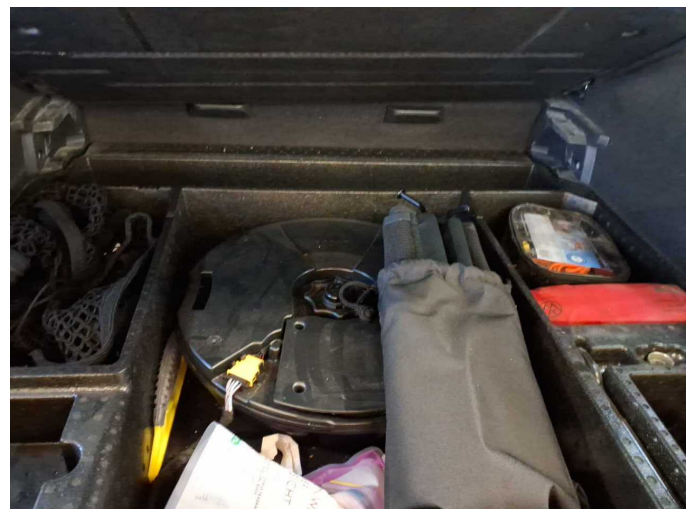


Figure 24: Misc.



Figure 25: Misc.



Figure 26: Misc.



Figure 27: Misc.



Figure 28: Misc.

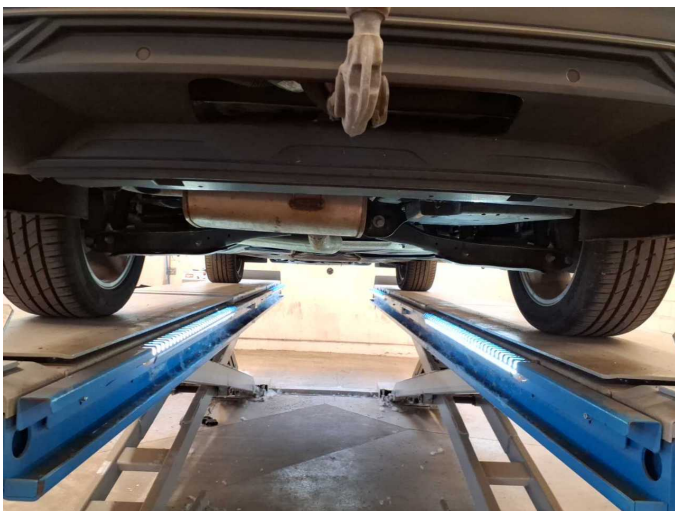


Figure 29: Misc.



Figure 30: Misc.



Figure 31: Misc.



Figure 32: Misc.



Figure 33: Misc.

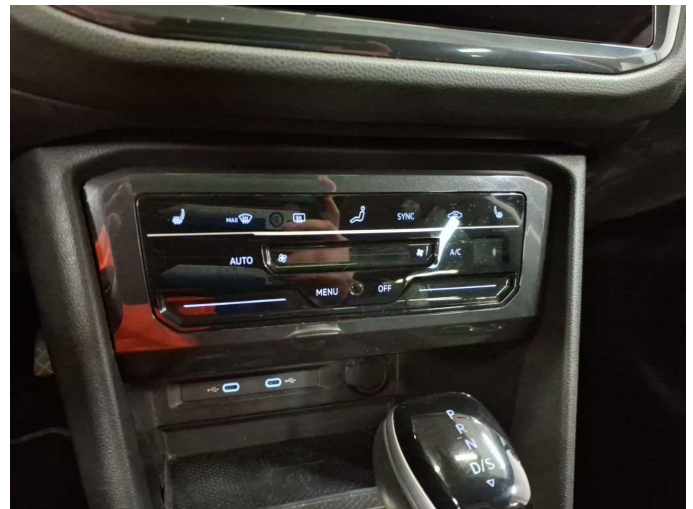


Figure 34: Misc.



Figure 35: Misc.



Damage 1: Wing mirror - right side: Cap - Scratch(es) - Smart repair



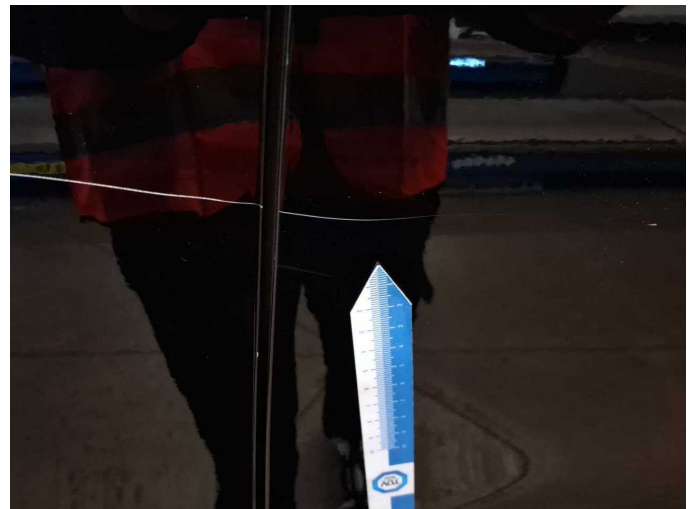
Damage 1: Wing mirror - right side: Cap - Scratch(es) - Smart repair



Damage 1: Wing mirror - right side: Cap - Scratch(es) - Smart repair



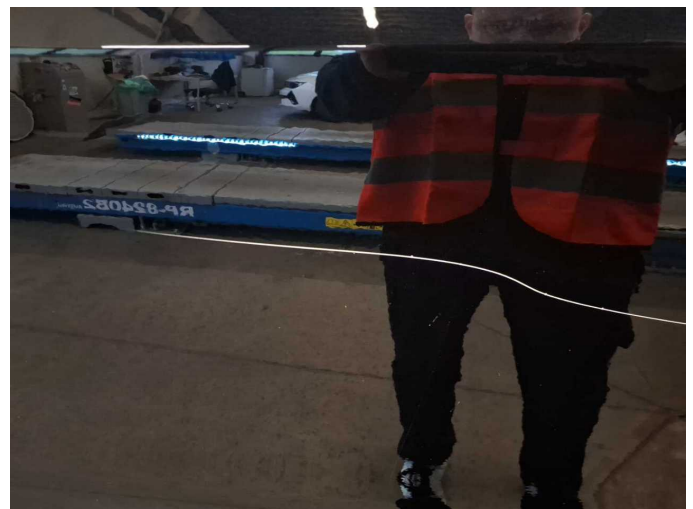
Damage 2: Door - rear left side: Door - Scratch(es) - Paint



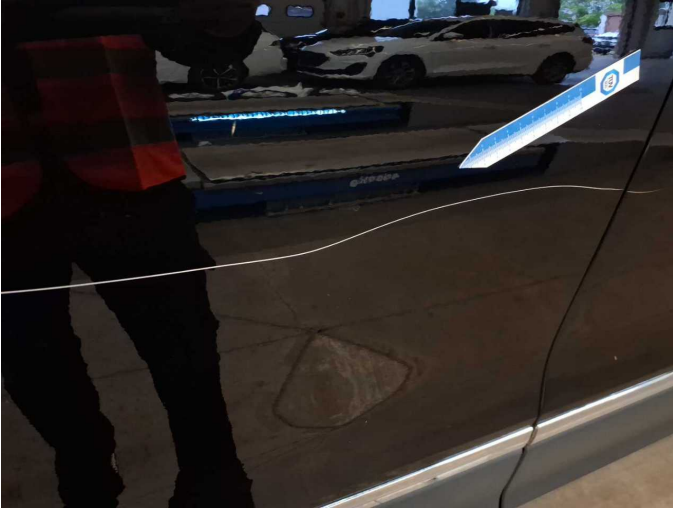
Damage 2: Door - rear left side: Door - Scratch(es) - Paint



Damage 3: Door - front left side: Door - Scratch(es) - Paint



Damage 3: Door - front left side: Door - Scratch(es) - Paint



Damage 3: Door - front left side: Door - Scratch(es) - Paint



Damage 4: Vehicle glazing: Windscreen - Stone chips - Replace



Damage 4: Vehicle glazing: Windscreen - Stone chips - Replace



Wear and tear 4: Trim / covers: Floor mats (VL) - Holes - No deduction



Wartungshistorie

(gemäß Auftraggeber Informationen)

Fahrgestellnummer: WVGZZZ5N2RM095278

Hersteller / Modell: VOLKSWAGEN VOLKSWAGEN Tiguan Allspace 2.0 TDI SCR
DSG Life

Datum	KM-Stand	Beschreibung
18.03.2026	67.094	Bremse Sonstiges; Bremsflüssigkeit; Bremsflüssigkeit ern; Bremsklötze hinten; Bremsscheiben + Klötze h; Bremsscheiben hinten; Motoröl b. Wartung; Ölfilter ern; Regelwartungsdienst; Wartung Sonstiges
29.04.2025	37.679	Motoröl b. Wartung; Ölfilter ern; Regelwartungsdienst; Wartung Sonstiges