

Expertise

Protocol number: 45855034
Order No. / Reference: 26378123
Inspection date: 3 Jun 2026

Manufacturer: Volkswagen

Model: Tiguan 1.4 eHybrid OPF DSG ACTIVE

VIN: WVGZZZ5N5PW409054



Vehicle details

Manufacturer / Type / Model / Equipment

Volkswagen Tiguan 1.4 eHybrid OPF DSG ACTIVE

Vehicle Identification number WVGZZZ5N5PW409054

Mileage (Read) 107,411 km

First registration 27 Mar 2023

Number of holders 1

Power / Engine displacement 110 kw / 1,395 ccm

Fuel type / Cylinder Hybr.B/E ext.auf1 / 4

Gearbox / Number of gears Automatic / 6

Type of drive Front drive

Type of vehicle SUV

Colour / colour code Pure White (C9A)

Doors / Seats 5 / 5

Upholstery type Cloth

Colour of upholstery Black-Grey

readiness to drive Roadworthy



Vehicle details

Maintenance booklet / proof	digital proof / complete	Next maintenance in	17,700 km
Last service on / at	10/2025 at 95,061 km		
Key is / should be	2 / 2	FZG documents	ZB#2 (B) was available (copy), ZB#1 (S) was not available.
		Letter No.	GP939396
Previous damage / Accident	Detectable	Repainting	Detectable
Inspection conditions	sufficient	Lifting equipment / pit	No
Test drive	Not performed	Engine function test	Performed
readiness to drive	Roadworthy		
Manufacturer key number/ type code number	0603 / CNC 00299		
Emission standard	EURO6;WLTP;AP;PI/CI; M, N1 I	fine dust sticker	
Permitted total weight	2,350 kg	Empty weight	

Tyres

Mounted tyres

#	Tyre size	Type of tyre	Manufacturer	Tread depth
1)	215/65 R17 99V	All-season tyres on Light alloy	Pirelli	5mm / 5mm
2)	215/65 R17 99V	All-season tyres on Light alloy	Pirelli	6mm / 6mm

Additional tyres

#	Tyre size	Type of tyre	Manufacturer	Tread depth
1)	215/65 R17 99H	Winter tires (with run-flat tires) on Light alloy	Pirelli	4mm / 4mm
2)	215/65 R17 99H	Winter tires (with run-flat tires) on Light alloy	Pirelli	5mm / 5mm

Replacement

Typ	Tyre size	Type of tyre	Manufacturer	Tread depth
	Tirefit	Expiration date 10/2026		

Legend: Tread depth information for the left tire is listed first, for the right tire it is listed second on the axle in the direction of travel.

TÜV SÜD Auto Partner GmbH
Wiesenring 2
04159 Leipzig

Inspection location
Hartmann Fleet Professionals GmbH
Leerenstraße 25
29683 Bad Fallingbommel



Equipment



Standard equipment

- Airbag for driver and front passenger including knee airbag on the driver's side (passenger airbag deactivation - knee airbag on the driver's side)
- Extended warranty, 3 years following the manufacturer's warranty, maximum total mileage 50,000 km
- Adaptive Cruise Control ACC (DSG) (Adaptive Cruise Control ACC "stop & go", with speed limiter - Emergency Brake Assist "Front Assist" (for ACC up to 210 km/h))
- third brake light
- Silver anodized roof rails
- Decorative inlays for special model
- Display: Digital Cockpit Pro, multicolor, various selectable info profiles
- Parking aid (warning signals for obstacles in the front and rear area)
- Electronic stability program with counter-steering support (including ABS, ASR, EDS, MSR and trailer stabilization)
- Automatic headlight control with LED daytime running lights ("Coming home" and "Leaving home" function)
- High beam control Light Assist
- Pedestrian detection
- Transmission: 6-speed DSG
- rear window wiper
- ISOFIX mounting points, also for i-Size child seats (device for attaching 2 child seats to the rear seats)
- Rear headrests (3)
- Front headrests (safety-optimized - adjustable lengthwise and height)
- LED reading lights, 2 in the front and 2 in the rear
- Steering wheel: Multifunction leather steering wheel, heated, with paddle shifters
- front center armrest
- Mains charging cable for household socket
- Emergency call service (no registration required, service is activated upon delivery)
- Upholstery: Cloth
- Radio
- Radio accessories: Digital radio reception DAB+
- Tire pressure monitoring system
- Wheels: Tires 215/65 R 17, rolling resistance class A
- Wheels: Tire Mobility Set (12V compressor and tire sealant)
- Front windshield washer nozzles automatically heated
- Electromechanical power steering (speed-dependent control)
- Seats: Front passenger seat backrest folds down completely
- Seats: Comfort seats in the front
- Seats: Lumbar support in the front
- Seats: Heated front seats
- Seats: Front seats with height adjustment
- Lane keeping assistant "Lane Assist"
- 12-volt power outlet (on the rear center console and in the luggage compartment)
- First aid kit, warning triangle and high-visibility vest
- Airbag: Head airbag system for front and rear passengers including front side airbags
- 30-color ambient lighting
- App-Connect including App-Connect Wireless for Apple CarPlay and Android Auto
- Electrically adjustable and heated exterior mirrors
- Exterior mirror housings and door handles in body color
- Vehicle tool kit
- Chrome applications on mirror adjustment switches, window regulator switches, door pull handles (interior door operation in matte chrome)
- e-Sound (artificially generated engine noise to inform other road users about the approach of the e-vehicle)
- Door sill trims for special edition model
- Electronic parking brake including auto-hold function
- Electronic stability program and electromechanical brake booster
- Driving profile selection
- Electric windows front and rear
- Windscreen made of laminated safety glass, heat and sound insulating
- Rear window heated
- Interior mirror automatically dimming
- LED license plate lighting
- Air conditioning system "Air Care Climatronic" (with active combination filter, rear controls and 3-zone temperature control)
- Mode 3 Type 2 charging cable, 16 A
- LED headlights
- Light in the front footwell
- Illuminated makeup mirrors in the sun visors
- Fatigue detection
- Non-smoking version (storage compartment and 12V socket at the front)
- Pedals and footrest in brushed stainless steel
- Proactive occupant protection system in conjunction with "Front Assist"
- Rain sensor
- Wheels: Light alloy (4) "Galway" 7 J x 17, in black, polished surface
- Gearshift knob in leather
- Windows: Rear side windows and rear window tinted
- Drawers under the front seats
- Seat belts: Three-point automatic seat belts at the front with height adjustment and belt tensioner (3 three-point automatic seat belts at the rear including belt tensioner for the outer rear seats - warning tone and light for unfastened seat belts at the front and rear)
- Seats: Rear bench seat asymmetrically split (longitudinally sliding and folding - with pass-through and center armrest)
- Voice control
- Start-stop system with brake energy recuperation
- Power outlet: 2 USB-C ports on the front
- Textile floor mats front and rear



- Warning tone and light for unfastened seat belts front and rear
- Central locking without safe locking, with remote control and 2 remote keys

- Prepared for later activation: Navigation function "Discover Media" incl. "Streaming & Internet"
- Electronic immobilizer

Extra equipment

- Trailer maneuvering assistant "Trailer Assist" including parking assist "Park Assist" and parking aid
- Electrically adjustable, folding, and heated exterior mirrors, ambient lighting, passenger-side mirror lowering function
- Paint finish: Uni Pure White
- Package: "IQ.DRIVE" assistance package including "Emergency Assist", without "Side Assist" (Proactive occupant protection system - "Travel Assist" driving assistant, "Lane Assist" lane keeping assistant and "Emergency Assist" - "Park Assist" parking assistant including parking aid - traffic sign recognition)
- Wheels: AirStop all-season tires 215/65 R 17 (4 AirStop all-season tires 215/65 R 17 (self-sealing))
- Foldable towbar (electric release)
- Extended warranty, cancellation
- Tailgate with electric opening and closing, adjustable opening angle
- Navigation system "Discover Media" incl. "Streaming & Internet" (8 speakers - 20.3 cm touchscreen - dual tuner with phase diversity for best possible radio reception - Radio Data System (RDS) - MP3 playback - USB-C interface with Apple compatibility - 4 x 20 watt output power - map with 2D display - telephone interface - traffic sign recognition - points of interest - DAB+ digital radio reception)
- Surround view "Area View" (incl. reversing camera "Rear View")

Brief expert findings

Documents submitted	At the time of the inspection, the vehicle registration certificate Part 2 (title) was available, but the vehicle registration certificate Part 1 (document) was not. (Copy)
VIN comparison	The vehicle identification number (VIN) was read from the vehicle and its conformity with the submitted documents was confirmed by the undersigned during the inspection.
Inspection	The inspection conditions were sufficient for the assessment of the vehicle. No lifting equipment or pit was available for inspecting the vehicle. Therefore, inspection of the vehicle's underside was only possible to a limited extent.
Test drive	No test drive/shunting maneuver was carried out during the inspection of the vehicle.
Engine function test	An engine test run was performed.
readiness to drive	The vehicle was roadworthy at the time of inspection.

Value reducing factors

No.	Component group	Description
1	Door - rear right side	Door - dent(s) - Smooth repair work

Wear and tear

No.	Component group	Description
1	Vehicle glazing	Windscreen - Stone chips - No deduction
2	Bonnet	Bonnet - Stone chips - No deduction
3	Front bumper	Front bumper - Stone chips - No deduction
4	Rear bumper	Rear bumper - Scratch(es) - No deduction
5	2nd wheel set	2 tyres (4mm- Kein Teil der Ausstattung) - Does not meet the leasing specifications - No deduction

The vehicle shows signs of wear and tear commensurate with its age and use.

Previous damages

No.	Previous damage	Extent of damage (Net)
1	Rear, Provided by user / customer, from 14 Feb 2024	11.475,76 €



Paint coat thickness measurement

Door - rear left side 306 µm |

Order/Scope of Order

An order was placed to prepare a sales report for the described vehicle. This report includes the following:

- Description of key vehicle information
- Documentation of equipment features
(*Delivery by third-party service providers*)
- Documentation of damage, defects, missing parts
- Documentation of prior damage, unrepaired prior damage, repainting
- A brief visual or functional inspection of the equipment details, if possible.
(*Functional testing of driver assistance systems is not included in the scope of services!*)
- a photographic documentation of the vehicle

Basis for the order

This product is based on the guidelines for vehicle returns and valuations published by Alphabet Fleet GmbH. The expert makes the specific findings in each individual case objectively, within the framework of the prescribed standards, based on their own expertise.

The vehicle inspection takes place in a fully assembled, unassembled state.

Damage or defects that can only be detected during disassembly/diagnostic work or through further investigation remain within the realm of prognostic risk. An increased risk exists due to concealed defects caused by fraudulent misrepresentation and which were not identifiable by the expert.

Damage or defects resulting from normal use or wear and tear of the vehicle will be accepted in accordance with the applicable standard.

There was no explicit identification or monetary consideration of the expected features within the product.

Features which, in their nature and extent, slightly exceed normal use but do not constitute unacceptable damage, will be documented and indicated as signs of wear, if applicable.

Damage or defects that, according to the applicable standard, can no longer be attributed to normal use or wear and tear are listed under "Value Reducing Factors" in the product description.

Depending on the product specification, a monetary ID can be provided. If this takes place, the costs can be 100% or pro rata depending on the vehicle's age and mileage.

Previous damages

According to available information previous damages were repaired at the vehicle. Traces of repairs, which allow conclusions about the area of repair, were not recognizable during the inspection.

Comments

Der beiliegende Winterradsatz ist kein Bestandteil der Ausstattung.



Figure 1: Diagonal front (left)



Figure 2: Diagonal front (right)



Figure 3: Diagonal rear (left)



Figure 4: Diagonal rear (right)

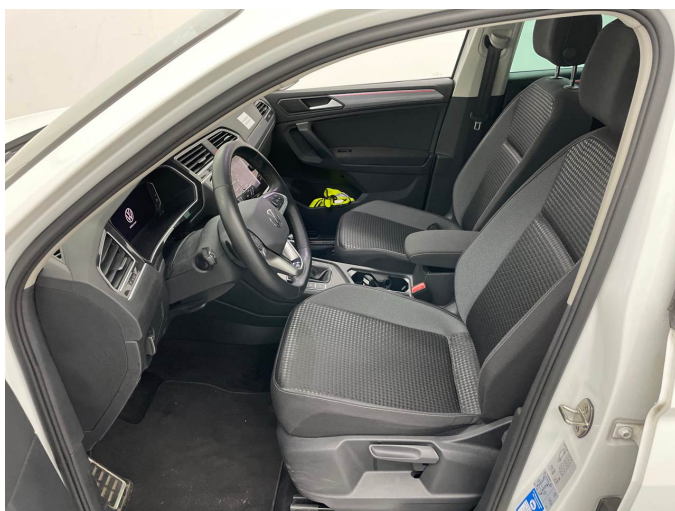


Figure 5: Interior - front



Figure 6: Interior - rear



Figure 7: Instrument cluster



Figure 8: Instrument panel



Figure 9: Interior 360° view



Figure 10: Cargo area



Figure 11: VIN

VOLKSWAGEN AG
s1*2001/118*0450
WVGZZZ5N5PW409054
2350 kg
4150 kg
1 - 1150 kg
2 - 1250 kg
Typ 5N
Dietmar Ring 2, DE-38440 Wolfsburg, www.volkswagen.com
M4
DGEA 604U
4412B03



Figure 12: Mounted tyres



Figure 13: Documents

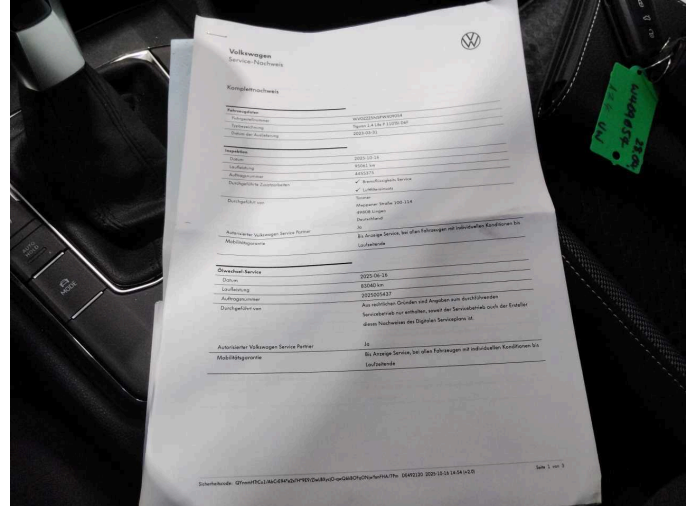


Figure 14: Documents

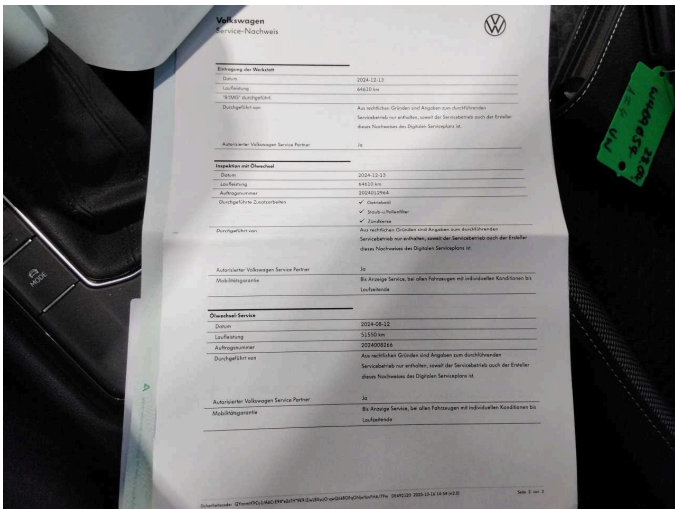


Figure 15: Documents

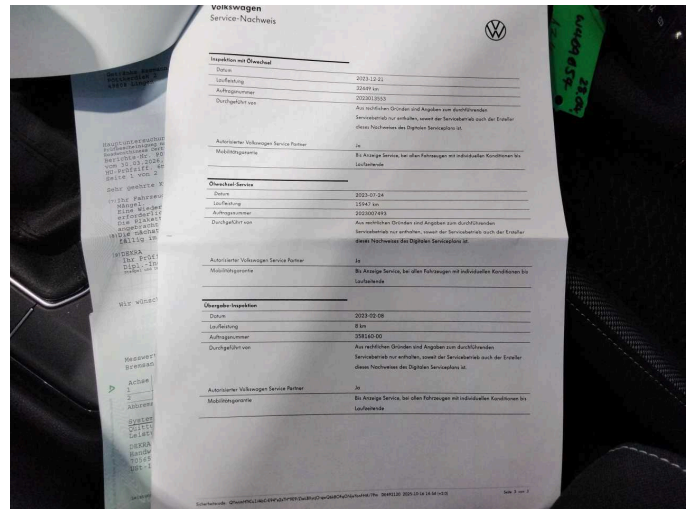


Figure 16: Documents



Figure 17: Documents



Figure 18: Additional tyres



Figure 19: Additional tyres



Figure 20: Navigation

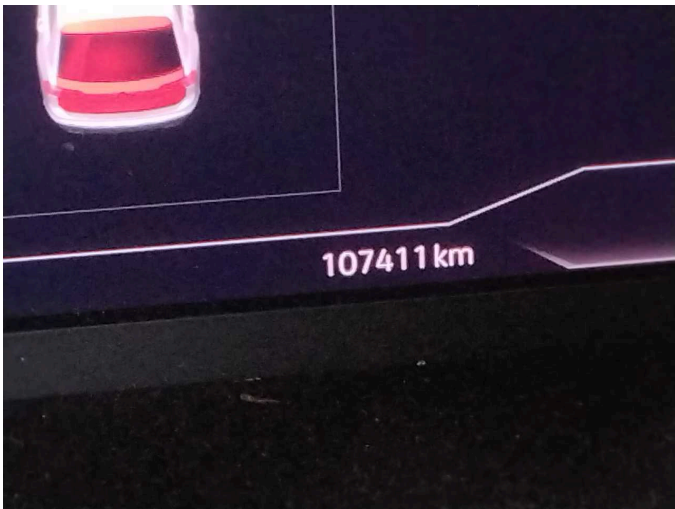


Figure 21: Misc.

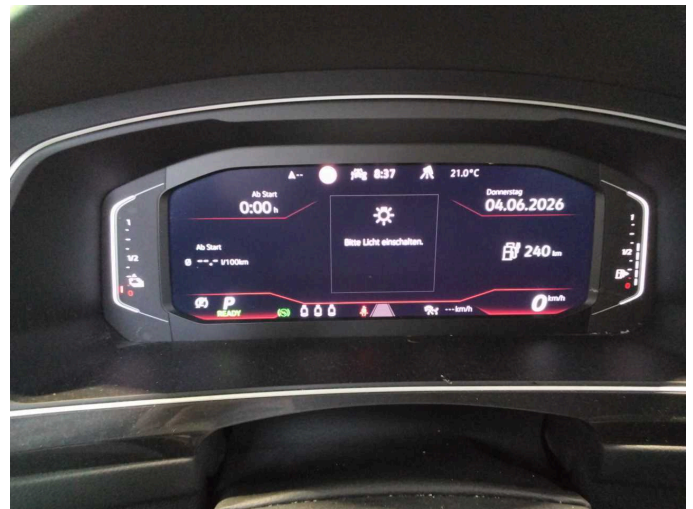


Figure 22: Misc.



Figure 23: Misc.

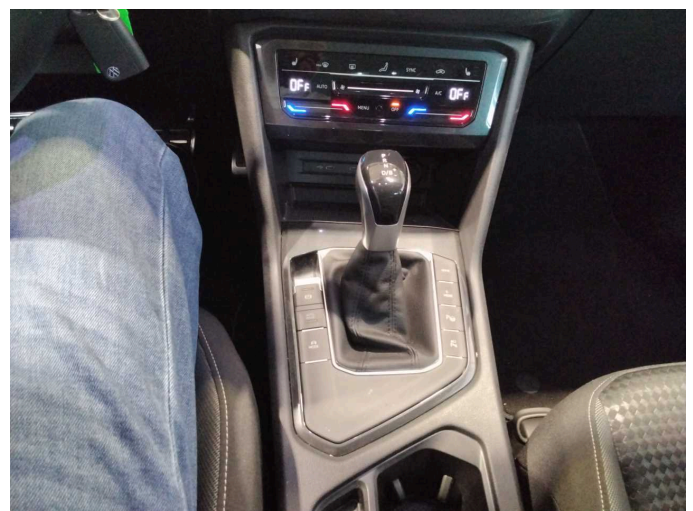


Figure 24: Misc.



Figure 25: Misc.



Figure 26: Misc.



Figure 27: Misc.



Figure 28: Misc.



Figure 29: Misc.

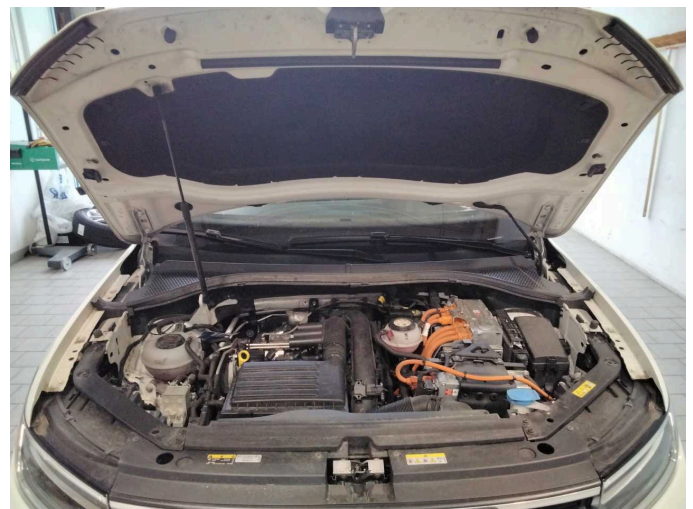


Figure 30: Misc.



Figure 31: Misc.



Figure 32: Misc.



Figure 33: Misc.



Figure 34: Misc.

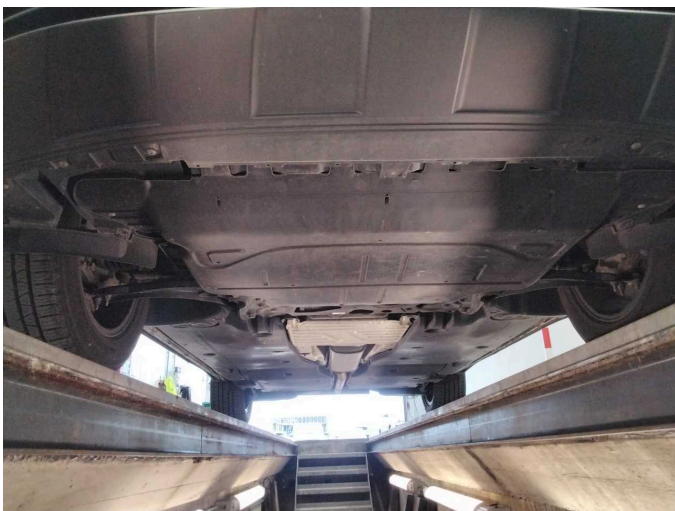


Figure 35: Misc.



Figure 36: Misc.



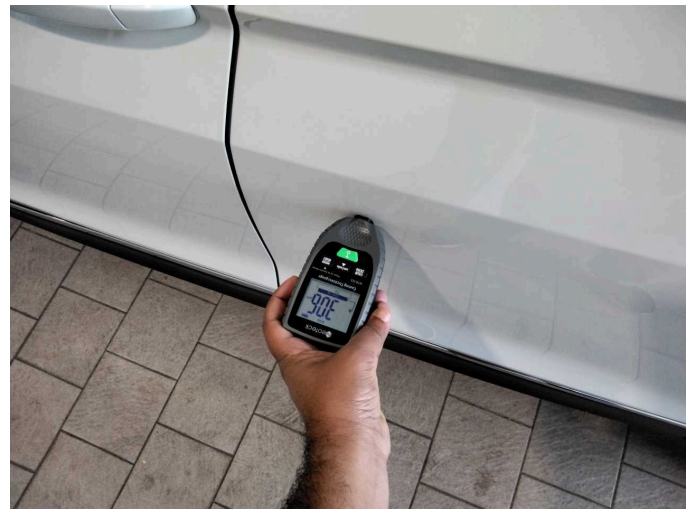
Damage 1: Door - rear right side: Door - dent(s) - Smooth repair work



Damage 1: Door - rear right side: Door - dent(s) - Smooth repair work



Damage 1: Door - rear right side: Door - dent(s) - Smooth repair work



Door - rear left side: 306 µm



Door - rear left side: 306 µm



Wartungshistorie

(gemäß Auftraggeber Informationen)

Fahrgestellnummer: WVGZZZ5N5PW409054

Hersteller / Modell: VOLKSWAGEN VW Tiguan 1.4 eHybrid OPF DSG ACTIVE

Datum	KM-Stand	Beschreibung
30.03.2026	106.778	HU + AU
17.10.2025	95.061	Bremse Sonstiges; Bremsflüssigkeit; Bremsflüssigkeit ern; Bremsklötze hinten; Bremsklötze vorne; Bremsscheiben hinten; Bremsscheiben vorne; Luftfiltereinsatz ern; Regelwartungsdienst; Wartung Sonstiges
16.06.2025	83.040	Motoröl b. Wartung; Ölfilter ern; Ölwechsel; Wartung Sonstiges
13.12.2024	64.620	Getriebeöl ern/prüfen; Motoröl b. Wartung; Ölfilter ern; Regelwartungsdienst; Wartung Sonstiges; Zündkerzen ern
12.08.2024	51.555	Motoröl b. Wartung; Ölfilter ern; Ölwechsel; Wartung Sonstiges
21.12.2023	32.449	Motoröl b. Wartung; Ölfilter ern; Regelwartungsdienst; Wartung Sonstiges
24.07.2023	15.947	Motoröl b. Wartung; Ölfilter ern; Ölwechsel; Wartung Sonstiges