

Expertise

Protocol number: 46182116
Order No. / Reference: 26495033
Inspection date: 26 Jun 2026

Manufacturer: Opel

Model: Insignia Sports Tourer 2.0 Diesel Aut. Business Elegance

VIN: W0VZT8GP1M1016200



Vehicle details

Manufacturer / Type / Model / Equipment

Opel Insignia Sports Tourer 2.0 Diesel Aut. Business Elegance

Vehicle Identification number W0VZT8GP1M1016200

Mileage (Read) 117,459 km

First registration 4 May 2021

Number of holders 1

Next periodical technical inspection 05/2028
(Report on hand)

Power / Engine displacement 128 kw / 1,995 ccm

Fuel type / Cylinder Diesel / 4

Gearbox / Number of gears Automatic / 8

Type of drive Front drive

Type of vehicle Station wagon

Colour / colour code Onyx Black Metallic

Doors / Seats 5 / 5

Upholstery type Alcantara / cloth

Colour of upholstery Black



Vehicle details

Maintenance booklet / proof	digital proof / complete	Next maintenance in	41 %
Last service on / at	11/2025 at 101,101 km		
Key is / should be	2 / 2	FZG documents	ZB#2 (B) was available (copy), ZB#1 (S) was not available.
		Letter No.	GA202939
Previous damage / Accident	Detectable	Repainting	None detectable
Inspection conditions	sufficient	Lifting equipment / pit	No
Test drive	Not performed	Engine function test	Performed
Manufacturer key number/ type code number	1844 / AMC 00114		
Emission standard	EURO6;WLTP;AP;PI/CI; M, N1 I	fine dust sticker	
Permitted total weight	2,215 kg	Empty weight	

Tyres

Mounted tyres

#	Tyre size	Type of tyre	Manufacturer	Tread depth
1)	245/45 R18 100Y	Summer tyres on Light alloy	Pirelli	5mm / 5mm
2)	245/45 R18 100Y	Summer tyres on Light alloy	Pirelli	6mm / 6mm

Additional tyres

#	Tyre size	Type of tyre	Manufacturer	Tread depth
1)	225/55 R17 101V	Winter tyres on Light alloy	Pirelli	6mm / 6mm
2)	225/55 R17 101V	Winter tyres on Light alloy	Pirelli	7mm / 7mm

Legend: Tread depth information for the left tire is listed first, for the right tire it is listed second on the axle in the direction of travel.



Equipment

Standard equipment

- Storage compartments
- Airbag: Front airbags (multi-stage) and side airbags, driver and front passenger
- Anti-lock braking system (ABS)
- Hill Start Assist
- Roof design line, chrome-plated
- Roof rails, silver anodized
- Diesel particulate filter
- Electronic brake force distribution (EBD)
- Driver information display 8"
- Front camera (Gen.3)
- Luggage compartment cover
- Transmission: 8-speed automatic transmission
- Interior and reading lights, front and rear
- Child safety lock in the rear doors, manual
- Rear headrests (3 pieces)
- LED fog lights
- LED daytime running lights
- Steering column adjustable for height and reach
- Center armrest, front
- Package: Easy-Access
- Park & Go with digital reversing camera (digital reversing camera - reversing assistant - lane change assistant - blind spot warning in both exterior mirrors - exterior mirrors with ambient lighting, electrically adjustable, heated and folding)
- Radio: Multimedia Navi Pro with 8" color touchscreen display
- Wheels: Alloy wheels 8.5 J x 18 (multi-spoke)
- Service interval indicator
- Seat belts: Three-point seat belts in all seats
- Seats: Ergonomic active seat, certified by the German Campaign for Healthy Backs (AGR), driver
- Bumpers painted in body color
- Traction Control (TC) Plus
- Traffic sign assistant
- Immobiliser
- Central locking with remote control
- Adaptive brake light
- Airbag: Front and rear outer head airbags
- Ambient lighting
- Electrically adjustable, heated and foldable exterior mirrors for driver and passenger side
- Headliner, glasses compartment
- Decorative strip hexagon
- Tachometer
- Electronic Stability Program (ESP Plus)
- Electric windows front and rear
- Pedestrian protection including active hood
- Speed controller
- Rear window wiper
- IntelliLux LED Pixel Light
- Front headrests
- Stainless steel loading sill protector
- LED taillights
- Steering wheel: Leather steering wheel
- Makeup mirror
- Package: Charging
- Package: Innovation Package 1 (IntelliLux LED Pixel Light Traffic Sign Assistant)
- Electric parking brake
- Parkpilot, front and rear parking aid
- Quickheat rapid heating system
- Radio: Digital radio reception DAB/DAB+/DMB-R
- Radio accessories: 2 USB ports
- Tire pressure gauge
- Wheels: Tire repair kit
- Power steering
- Visibility equipment
- Start/Stop System
- 12V power outlet in the luggage compartment
- Phone: Wireless Charging
- Exterior door handles, in body color with chrome inlay
- Pre-installation for child seat mounting system "ISOFIX"
- Thermal insulation glazing, green tinted
- Second folding ignition key



Extra equipment

- Swiveling trailer hitch (including trailer stability program)
- Paint finish: Metallic
- Package: Innovation Package 2 (automatic transmission) (Head-up display - Adaptive cruise control (Generation 3), Stop & Go function - Front collision warning with pedestrian detection and automatic emergency braking, active from 4 km/h, range 150 m. In case of risk of collision, the braking system is prepared and, if necessary, emergency braking / automatic emergency braking is initiated - Radiator grille with chrome surround - Keyless locking and starting system Keyless Open & Start)
- Wheels: Additional set of winter wheels 17
- Solar Protect heat-insulating glazing (in the rear, heavily tinted)
- FlexOrganizer equipment (FlexOrganizer rails, 4 mounting adapters with mounting hooks in the luggage compartment floor, movable)
- Package: Winter 3 (Heated seats, multi-stage, driver and front passenger - Heated seats, rear (on the outer seats) - Heated leather steering wheel - Dual-zone automatic climate control - Heated ThermoTec windshield - Seat comfort equipment 1; 8-way electric driver's seat, memory function for driver's seat and exterior mirrors, massage function, driver, electropneumatic adjustment)
- Upholstery: Alcantara trim, black (Ergonomic active seat (AGR), driver and front passenger (length, height, backrest angle manually adjustable, seat angle electrically adjustable, electro-pneumatic lumbar support adjustable in height and length, extendable thigh support, manually adjustable, headrest, height and tilt adjustable) - Seat contact surfaces partially in Alcantara/leatherette - Side airbags, rear outer - Center armrest, rear, with cup holders and pass-through - Rear seat backrest with FlexFold, 40:20:40 split-folding)

Brief expert findings

Documents submitted	At the time of the inspection, the vehicle registration certificate Part 2 (title) was available, but the vehicle registration certificate Part 1 (document) was not. (Copy)
VIN comparison	The vehicle identification number (VIN) was read from the vehicle and its conformity with the submitted documents was confirmed by the undersigned during the inspection.
Inspection	The inspection conditions were sufficient for the assessment of the vehicle. No lifting equipment or pit was available for inspecting the vehicle. Therefore, inspection of the vehicle's underside was only possible to a limited extent.
Test drive	No test drive/shunting maneuver was carried out during the inspection of the vehicle.
Engine function test	An engine test run was performed.

Value reducing factors

No.	Component group	Description
1	Equipment	Tirefit filler - Expired - Replace
2	Mudguard - right side	Mudguard - right side - Glued / labelled - De-glue / neutralise
3	Wheel / tyres	Alloy rim - front right side - Scratch(es) - Loss in value
4	Side panel - rear right side	Side panel - dent(s) - Smart repair
5	Wheel / tyres	Alloy rim - front left side - Scratch(es) - Loss in value
6	Wheel / tyres	Alloy rim - rear left side (- Materialabtrag) - Scratched - Replace
7	Wheel / tyres	Alloy rim - rear right side (- Materialabtrag) - Scratched - Replace
8	Vehicle glazing	Windscreen with lane departure assistant - Broken / torn - Replace
9	Rear bumper	Rear bumper - Broken / torn - Replace

Wear and tear

No.	Component group	Description
1	Bonnet	Bonnet - Stone chips - No deduction

The vehicle shows signs of wear and tear commensurate with its age and use.



Previous damages

No.	Previous damage	Extent of damage (Net)
1	Front, Provided by user / customer, from 25 Sept 2023	1.720,09 €
2	Rear, Side - left, Provided by user / customer, from 14 May 2025	2.333,28 €

Order/Scope of Order

An order was placed to prepare a sales report for the described vehicle. This report includes the following:

- Description of key vehicle information
- Documentation of equipment features
(*Delivery by third-party service providers*)
- Documentation of damage, defects, missing parts
- Documentation of prior damage, unrepaired prior damage, repainting
- A brief visual or functional inspection of the equipment details, if possible.
(*Functional testing of driver assistance systems is not included in the scope of services!*)
- a photographic documentation of the vehicle

Basis for the order

This product is based on the guidelines for vehicle returns and valuations published by Alphabet Fleet GmbH. The expert makes the specific findings in each individual case objectively, within the framework of the prescribed standards, based on their own expertise.

The vehicle inspection takes place in a fully assembled, unassembled state.

Damage or defects that can only be detected during disassembly/diagnostic work or through further investigation remain within the realm of prognostic risk. An increased risk exists due to concealed defects caused by fraudulent misrepresentation and which were not identifiable by the expert.

Damage or defects resulting from normal use or wear and tear of the vehicle will be accepted in accordance with the applicable standard.

There was no explicit identification or monetary consideration of the expected features within the product.

Features which, in their nature and extent, slightly exceed normal use but do not constitute unacceptable damage, will be documented and indicated as signs of wear, if applicable.

Damage or defects that, according to the applicable standard, can no longer be attributed to normal use or wear and tear are listed under "Value Reducing Factors" in the product description.

Depending on the product specification, a monetary ID can be provided. If this takes place, the costs can be 100% d or pro rata depending on the vehicle's age and mileage.

Previous damages

According to available information previous damages were repaired at the vehicle. Traces of repairs, which allow conclusions about the area of repair, were not recognizable during the inspection.

Comments

- Die Unterbodenbesichtigung war nur ebenerdig & eingeschränkt möglich. Mehrkosten möglich.



Figure 1: Diagonal front (left)



Figure 2: Diagonal front (right)



Figure 3: Diagonal rear (left)



Figure 4: Diagonal rear (right)



Figure 5: Interior - front



Figure 6: Interior - rear



Figure 7: Instrument cluster



Figure 8: Instrument panel



Figure 9: Interior 360° view



Figure 10: Cargo area

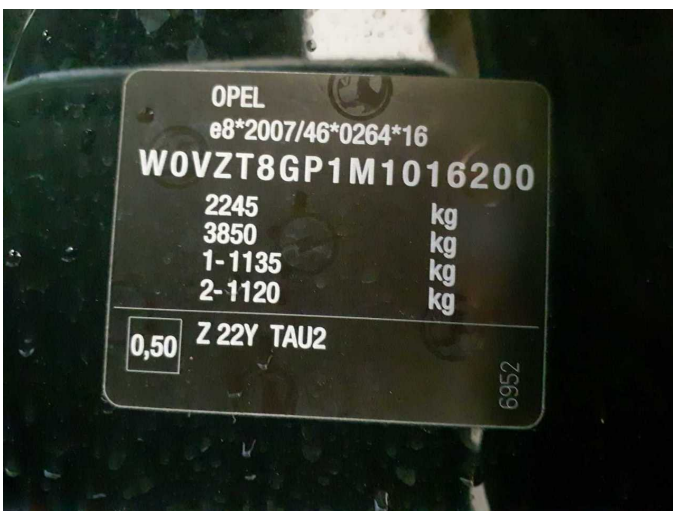


Figure 11: VIN



Figure 12: Mounted tyres



Figure 13: Documents

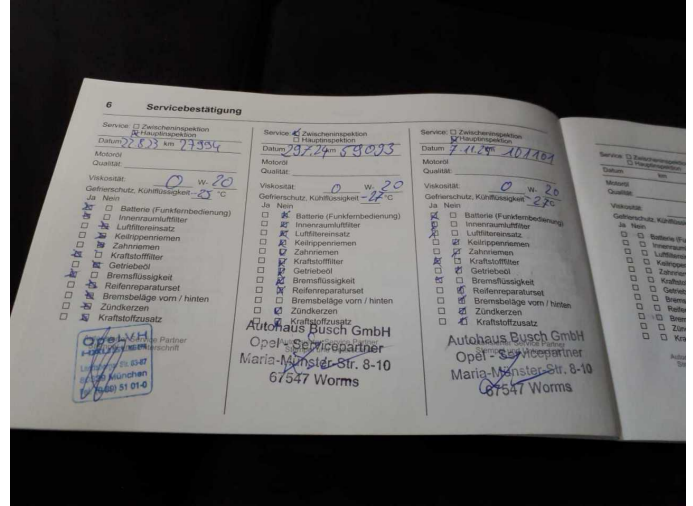


Figure 14: Documents



Figure 15: Documents



Figure 16: Documents



Figure 17: Additional tyres

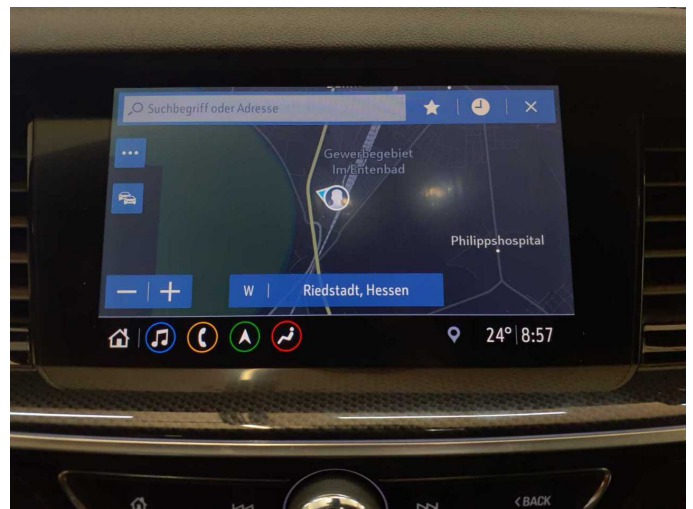


Figure 18: Navigation



Figure 19: Misc.



Figure 20: Misc.



Figure 21: Misc.



Figure 22: Misc.



Figure 23: Misc.



Figure 24: Misc.



Figure 25: Misc.



Figure 26: Misc.

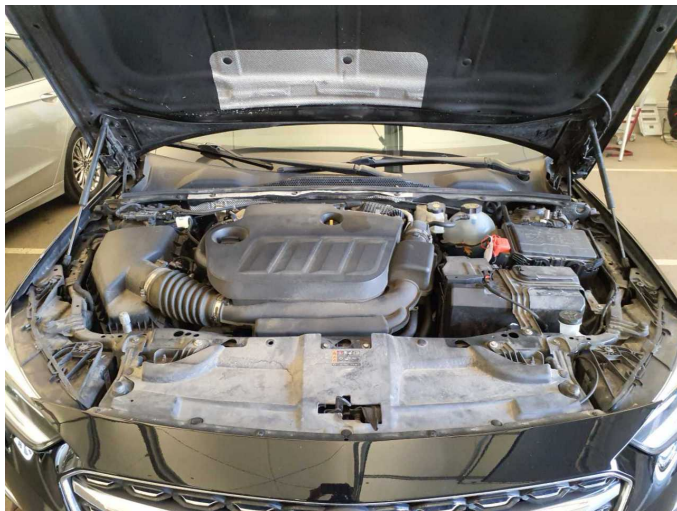


Figure 27: Misc.



Figure 28: Misc.



Figure 29: Misc.



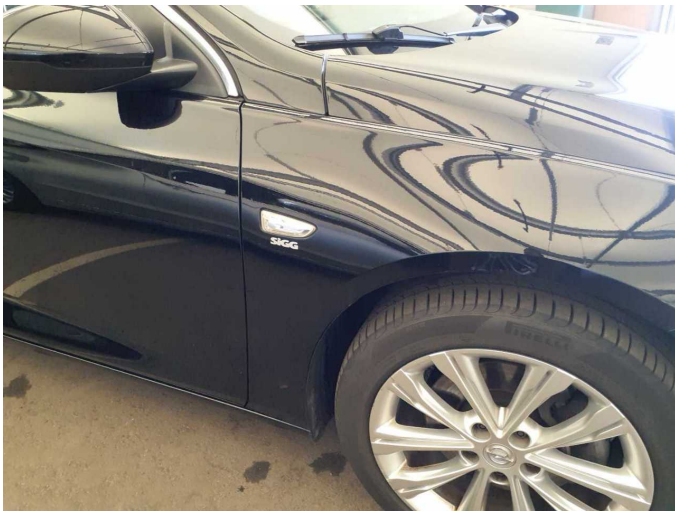
Figure 30: Misc.



Figure 31: Misc.



Damage 1: Equipment: Tirefit filler - Expired - Replace



Damage 2: Mudguard - right side: Mudguard - right side - Glued / labelled - De-glue / neutralise



Damage 2: Mudguard - right side: Mudguard - right side - Glued / labelled - De-glue / neutralise



Damage 2: Mudguard - right side: Mudguard - right side - Glued / labelled - De-glue / neutralise



Damage 2: Mudguard - right side: Mudguard - right side - Glued / labelled - De-glue / neutralise



Damage 2: Mudguard - right side: Mudguard - right side - Glued / labelled - De-glue / neutralise



Damage 2: Mudguard - right side: Mudguard - right side - Glued / labelled - De-glue / neutralise



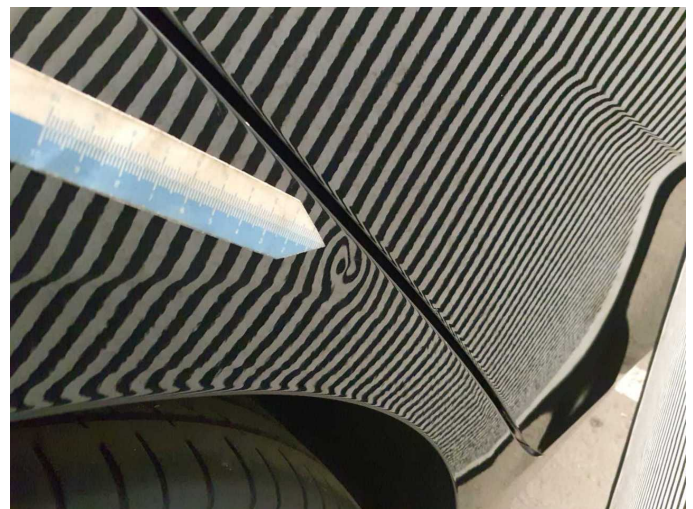
Damage 3: Wheel / tyres: Alloy rim - front right side - Scratch(es) - Loss in value



Damage 3: Wheel / tyres: Alloy rim - front right side - Scratch(es) - Loss in value



Damage 4: Side panel - rear right side: Side panel - dent(s) - Smart repair



Damage 4: Side panel - rear right side: Side panel - dent(s) - Smart repair



Damage 5: Wheel / tyres: Alloy rim - front left side - Scratch(es) - Loss in value



Damage 5: Wheel / tyres: Alloy rim - front left side - Scratch(es) - Loss in value



Damage 6: Wheel / tyres: Alloy rim - rear left side (- Materialabtrag) - Scratched - Replace



Damage 6: Wheel / tyres: Alloy rim - rear left side (- Materialabtrag) - Scratched - Replace



Damage 6: Wheel / tyres: Alloy rim - rear left side (- Materialabtrag) - Scratched - Replace



Damage 6: Wheel / tyres: Alloy rim - rear left side (- Materialabtrag) - Scratched - Replace



Damage 6: Wheel / tyres: Alloy rim - rear left side (- Materialabtrag) - Scratched - Replace



Damage 6: Wheel / tyres: Alloy rim - rear left side (- Materialabtrag) - Scratched - Replace



Damage 7: Wheel / tyres: Alloy rim - rear right side (- Materialabtrag) - Scratched - Replace



Damage 7: Wheel / tyres: Alloy rim - rear right side (- Materialabtrag) - Scratched - Replace



Damage 7: Wheel / tyres: Alloy rim - rear right side (- Materialabtrag) - Scratched - Replace



Damage 7: Wheel / tyres: Alloy rim - rear right side (- Materialabtrag) - Scratched - Replace



Damage 7: Wheel / tyres: Alloy rim - rear right side (- Materialabtrag) - Scratched - Replace



Damage 7: Wheel / tyres: Alloy rim - rear right side (- Materialabtrag) - Scratched - Replace



Damage 7: Wheel / tyres: Alloy rim - rear right side (- Materialabtrag) - Scratched - Replace



Damage 8: Vehicle glazing: Windscreen with lane departure assistant - Broken / torn - Replace



Damage 8: Vehicle glazing: Windscreen with lane departure assistant - Broken / torn - Replace



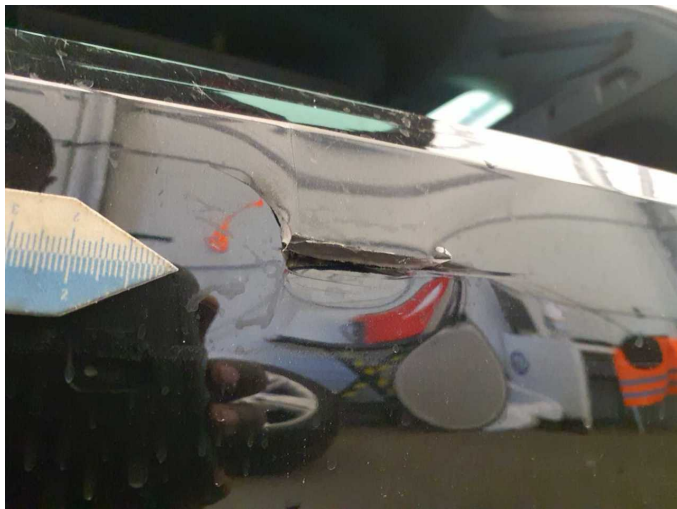
Damage 8: Vehicle glazing: Windscreen with lane departure assistant - Broken / torn - Replace



Damage 9: Rear bumper: Rear bumper - Broken / torn - Replace



Damage 9: Rear bumper: Rear bumper - Broken / torn - Replace



Damage 9: Rear bumper: Rear bumper - Broken / torn - Replace



Damage 9: Rear bumper: Rear bumper - Broken / torn - Replace



Wartungshistorie

(gemäß Auftraggeber Informationen)

Fahrgestellnummer: W0VZT8GP1M1016200
Hersteller / Modell: OPEL OPEL Insignia Sports Tourer 2.0 Diesel Aut. Business Elegance

Datum	KM-Stand	Beschreibung
04.05.2026	114.927	AU
09.02.2026	107.348	Batterie ern; Reparatur Sonstiges; Systemtest/Eigendiagnose
13.11.2025	101.101	Bremsflüssigkeit; Bremsflüssigkeit ern; Kraftstofffilter ern; Luftfiltereinsatz ern; Motoröl b. Wartung; Ölfilter ern; Regelwartungsdienst; Wartung Sonstiges
13.05.2025	59.093	Systemtest/Eigendiagnose
31.07.2024	59.093	Bremse Sonstiges; Bremsklötze hinten; Motoröl b. Wartung; Ölfilter ern; Regelwartungsdienst; Wartung Sonstiges
19.06.2024	55.502	Bremse Sonstiges; Bremsklötze vorne
26.04.2024	48.726	AU
18.03.2024	44.232	Batterie ern; Systemtest/Eigendiagnose
24.08.2023	28.067	Bremsflüssigkeit; Bremsflüssigkeit ern; Kraftstofffilter ern; Motoröl b. Wartung; Ölfilter ern; Regelwartungsdienst; Wartung Sonstiges
17.05.2022	19.087	Motoröl b. Wartung; Ölfilter ern; Regelwartungsdienst; Wartung Sonstiges