

Expertise

Protocol number: 45883462
Order No. / Reference: 26453961
Inspection date: 10 Jun 2026

Manufacturer: Volkswagen

Model: Tiguan 2.0 TDI SCR 4MOTION DSG Elegance

VIN: WVGZZZ5NZNW032182



Vehicle details

Manufacturer / Type / Model / Equipment

Volkswagen Tiguan 2.0 TDI SCR 4MOTION DSG Elegance

Vehicle Identification number WVGZZZ5NZNW032182

Mileage (Read) 88,473 km

First registration 29 Mar 2022

Number of holders 1

Power / Engine displacement 147 kw / 1,968 ccm

Fuel type / Cylinder Diesel / 4

Gearbox / Number of gears Automatic / 7

Type of drive All-wheel drive

Type of vehicle SUV

Colour / colour code uranograu

Doors / Seats 5 / 5

Upholstery type Cloth

Colour of upholstery Black-Anthracite



Vehicle details

Maintenance booklet / proof	digital proof / complete	Next maintenance in	4,600 km
Last service on / at	01/2025 at 62,992 km		
Key is / should be	2 / 2	FZG documents	ZB#2 (B) was available (copy), ZB#1 (S) was not available.
		Letter No.	GJ030205
Previous damage / Accident	Detectable	Repainting	Detectable
Inspection conditions	sufficient	Lifting equipment / pit	yes
Test drive	Not performed	Engine function test	Performed
Manufacturer key number/ type code number	0603 / CLE 02490		
Emission standard	EURO6;WLTP;AP;PI/CI; M, N1 I	fine dust sticker	
Permitted total weight	2,250 kg	Empty weight	

Tyres

Mounted tyres				
#	Tyre size	Type of tyre	Manufacturer	Tread depth
1)	235/55 R18 100H	Winter tyres on Light alloy	Continental	4mm / 4mm
2)	235/55 R18 100H	Winter tyres on Light alloy	Continental	5mm / 5mm
Additional tyres				
#	Tyre size	Type of tyre	Manufacturer	Tread depth
1)	235/50 R19 103W	Summer tyres on Light alloy	Hankook	5mm / 5mm
2)	235/50 R19 103W	Summer tyres on Light alloy	Hankook	6mm / 6mm

Legend: Tread depth information for the left tire is listed first, for the right tire it is listed second on the axle in the direction of travel.



Equipment

Standard equipment

- Airbag for driver and front passenger including knee airbag on the driver's side
 - Permanent 4MOTION all-wheel drive
 - Adaptive Cruise Control (ACC) (DSG)
 - Electrically adjustable and heated exterior mirrors
 - third brake light
 - Silver anodized roof rails
 - Diesel particulate filter
 - Tachometer
 - Parking assistance
 - Electronic Stability Program with counter-steering support
 - Driving profile selection
 - Electric windows front and rear
 - Windscreen made of laminated safety glass, heat and sound insulating
 - Tailgate with electric opening and closing, adjustable opening angle
 - Interior mirror automatically dimming
 - LED license plate lighting
 - Combination instrument cluster with electronic speedometer
 - Paint finish: Solid
 - LED matrix headlights
 - Light in the front footwell
 - Front center armrest adjustable in height and length, with storage box and rear air vents
 - Emergency call service
 - Package: Chrome package
 - Padding: Microfleece
 - Radio accessories: 8 speakers
 - Tire pressure monitoring system
 - Drawers under the front seats
 - Seat belts: Three-point automatic seat belts at the front with height adjustment and belt tensioner
 - Seats: Lumbar support in the front
 - Seats: Top comfort seats in the front
 - Lane keeping assistant "Lane Assist"
 - 12-volt socket
 - Bumpers in body color
 - First aid kit, warning triangle and high-visibility vest
 - Green thermal insulation glazing, sides and rear
- Airbag: Head airbag system for front and rear passengers including front side airbags
 - App-Connect including App-Connect Wireless for Apple CarPlay and Android Auto
 - Hill descent control
 - Chrome applications on mirror adjustment switches, window regulator switches, door pull handles
 - Display: Digital Cockpit Pro, multicolor, various selectable info profiles
 - Electronic parking brake including auto-hold function
 - Automatic headlight control, with LED daytime running lights
 - High beam control Light Assist
 - Pedestrian detection
 - Transmission: 7-speed DSG
 - Rear window heated
 - rear window wiper
 - ISOFIX mounting points, also for i-Size child car seats
 - Air conditioning system "Air Care Climatronic"
 - Rear headrests (3)
 - Front headrests
 - LED reading lights, 2 in the front and 2 in the rear
 - Steering wheel: Multifunction leather steering wheel, heated, with paddle shifters
 - Fatigue detection
 - Non-smoking version
 - Package: Ambiance Package
 - Package: Winter
 - Radio "Ready 2 Discover" incl. "Streaming & Internet"
 - Rain sensor
 - Gearshift knob in leather
 - electromechanical power steering
 - Seats: Front passenger seat backrest folds down completely
 - Seats: Rear bench seat asymmetrically split
 - Seats: Front seats with height adjustment
 - Start-stop system with brake energy recuperation
 - Power outlet: 2 USB-C ports on the front
 - Textile floor mats front and rear
 - Electronic immobilizer
 - Central locking without safe locking, with remote control and 2 remote keys



Extra equipment

- Foldable towbar (electric release)
- Display: Head-up display
- Navigation system "Discover Media" incl. "Streaming & Internet" (20.3 cm TFT touchscreen - FM radio reception - Dual tuner with phase diversity for best possible radio reception - Radio Data System (RDS) - Radio station logos - MP3 playback - USB-C interface with Apple compatibility - 4 x 20 watt output power - Map with 2D display - 3-band sound control - Telephone interface - Traffic sign recognition - Points of interest - DAB+ digital radio reception)
- Package: Driver assistance package "Plus" (Driving assistant "Travel Assist", lane keeping assistant "Lane Assist" and "Emergency Assist" - parking steering assistant "Park Assist" incl. parking aid - proactive occupant protection system in conjunction with "Front Assist" - lane change assistant "Side Assist" and parking assistant - traffic sign recognition)
- Electrically adjustable, folding, and heated exterior mirrors, ambient lighting, passenger-side mirror lowering function
- Mesh partition
- Package: Business Premium (DSG) (App-Connect incl. App-Connect Wireless for Apple CarPlay and Android Auto - Leather multifunction steering wheel, heated, with shift paddles - Automatically heated front windscreen washer nozzles - Voice control - "Comfort" telephone interface with inductive charging function - Heated front seats)
- Package: Cargo (230V socket in the luggage compartment - luggage compartment lighting - luggage compartment floor height adjustable in 2 stages)
- Wheels: Alloy (4) "Auckland" 7 J x 19, Volkswagen R (in Dark Graphite, polished surface - AirStop tires 235/50 R 19 - wheel locks with enhanced theft protection)
- Windows: Rear side windows and rear window tinted

Brief expert findings

Documents submitted	At the time of the inspection, the vehicle registration certificate Part 2 (title) was available, but the vehicle registration certificate Part 1 (document) was not. (Copy)
VIN comparison	The vehicle identification number (VIN) was read from the vehicle and its conformity with the submitted documents was confirmed by the undersigned during the inspection.
Inspection	The inspection conditions were sufficient for the assessment of the vehicle. Lifting equipment and/or a pit were available for examining the vehicle.
Test drive	No test drive/shunting maneuver was carried out during the inspection of the vehicle.
Engine function test	An engine test run was performed.

Value reducing factors

No.	Component group	Description
1	Bonnet	Insulation lining - Damage caused by marten / rodent - Replace
2	Door - rear right side	Door handle - inside - Deformed - Replace

Wear and tear

No.	Component group	Description
1	Misc.	Main inspection - No evidence - No deduction
2	Wing mirror - right side	Cap - Abrasion - No deduction

The vehicle shows signs of wear and tear commensurate with its age and use.

Previous damages

No.	Previous damage	Extent of damage (Net)
1	Rear, Provided by user / customer, from 5 Aug 2022	1.626,83 €
2	Side right, Provided by user / customer, from 19 Apr 2023	2.700,71 €
3	Front, Professionally repaired, Invoice of repair done Non-existent	



Repainting

No. Repainting

- 1 Bonnet, Professionally carried out, Invoice of repair done Non-existent
- 2 Side panel - rear right side, Professionally carried out, Invoice of repair done Non-existent
- 3 Door - rear right side, Professionally carried out, Invoice of repair done Non-existent

Paint coat thickness measurement

Bonnet	349 µm	Side panel - rear right side	211 µm
Door - rear right side	170 µm		

Order/Scope of Order

An order was placed to prepare a sales report for the described vehicle. This report includes the following:

- Description of key vehicle information
- Documentation of equipment features
(Delivery by third-party service providers)
- Documentation of damage, defects, missing parts
- Documentation of prior damage, unrepaired prior damage, repainting
- A brief visual or functional inspection of the equipment details, if possible.
(Functional testing of driver assistance systems is not included in the scope of services!)
- a photographic documentation of the vehicle

Basis for the order

This product is based on the guidelines for vehicle returns and valuations published by Alphabet Fleet GmbH. The expert makes the specific findings in each individual case objectively, within the framework of the prescribed standards, based on their own expertise.

The vehicle inspection takes place in a fully assembled, unassembled state.

Damage or defects that can only be detected during disassembly/diagnostic work or through further investigation remain within the realm of prognostic risk. An increased risk exists due to concealed defects caused by fraudulent misrepresentation and which were not identifiable by the expert.

Damage or defects resulting from normal use or wear and tear of the vehicle will be accepted in accordance with the applicable standard.

There was no explicit identification or monetary consideration of the expected features within the product.

Features which, in their nature and extent, slightly exceed normal use but do not constitute unacceptable damage, will be documented and indicated as signs of wear, if applicable.

Damage or defects that, according to the applicable standard, can no longer be attributed to normal use or wear and tear are listed under "Value Reducing Factors" in the product description.

Depending on the product specification, a monetary ID can be provided. If this takes place, the costs can be 100% d or pro rata depending on the vehicle's age and mileage.

Previous damages

Professionally repaired previous damages were found at the vehicle.

Comments

Der montierte Radsatz ist nicht Bestandteil der vorliegenden Fahrzeugausstattung.

Wartungshistorie gemäß Auftraggeber Informationen.



Figure 1: Diagonal front (left)



Figure 2: Diagonal front (right)



Figure 3: Diagonal rear (left)



Figure 4: Diagonal rear (right)

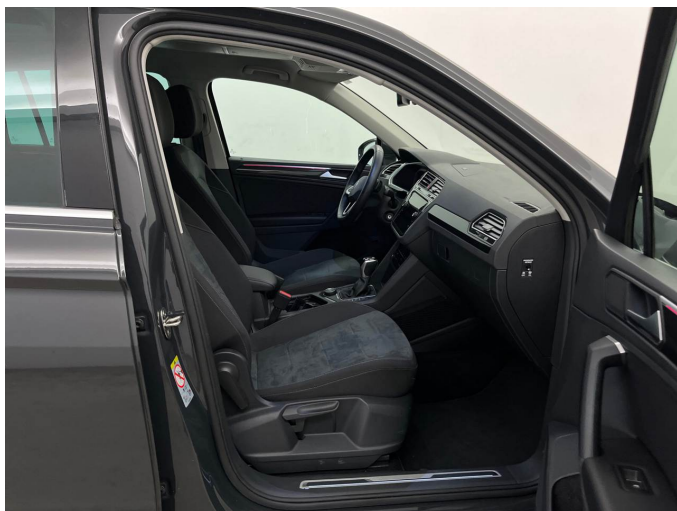


Figure 5: Interior - front



Figure 6: Interior - rear



Figure 7: Instrument cluster



Figure 8: Instrument panel



Figure 9: Interior 360° view



Figure 10: Cargo area

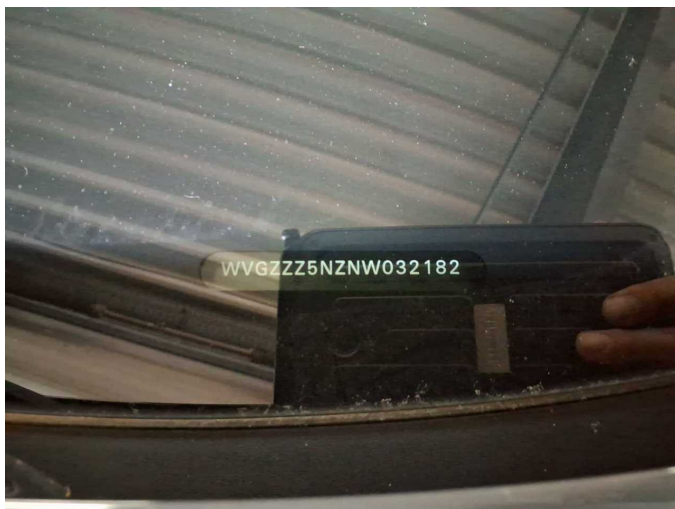


Figure 11: VIN



Figure 12: Mounted tyres



Figure 13: Documents



Figure 14: Additional tyres



Figure 15: Navigation



Figure 16: Misc.



Figure 17: Misc.



Figure 18: Misc.



Figure 19: Misc.



Figure 20: Misc.

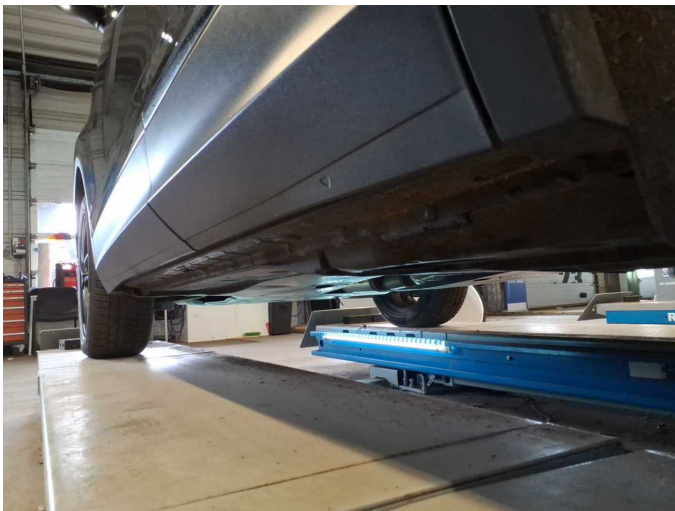


Figure 21: Misc.

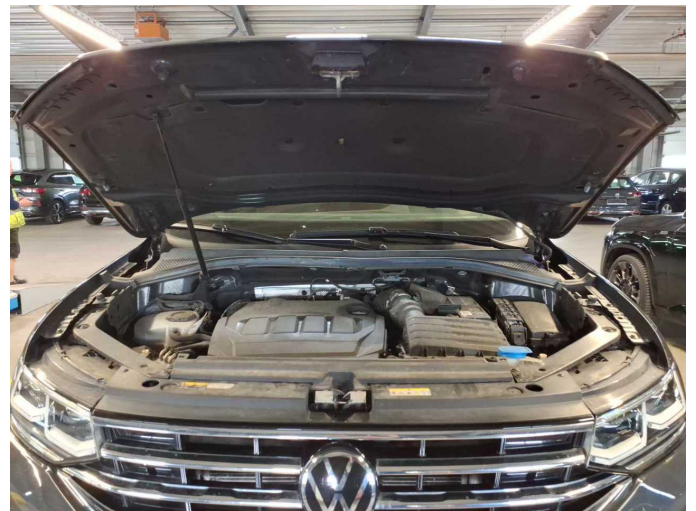


Figure 22: Misc.



Figure 23: Misc.

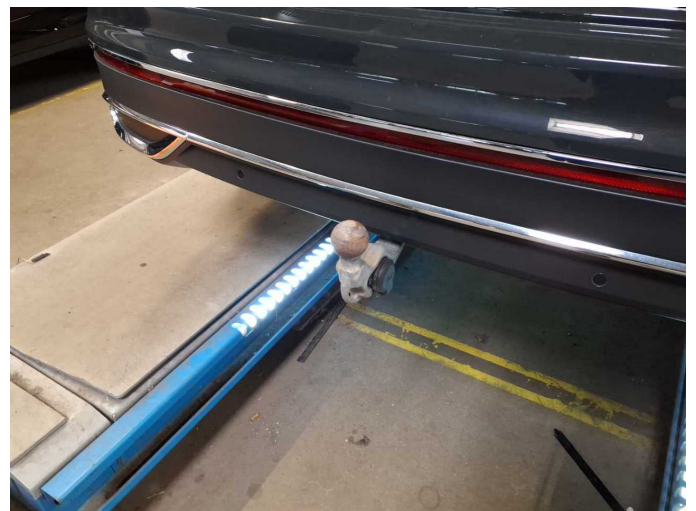


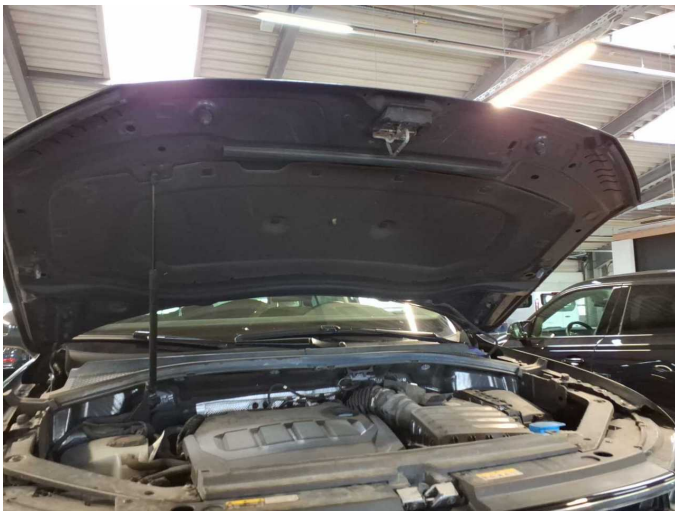
Figure 24: Misc.



Figure 25: Misc.



Figure 26: Misc.



Damage 1: Bonnet: Insulation lining - Damage caused by marten / rodent
- Replace



Damage 1: Bonnet: Insulation lining - Damage caused by marten / rodent
- Replace



Damage 2: Door - rear right side: Door handle - inside - Deformed -
Replace



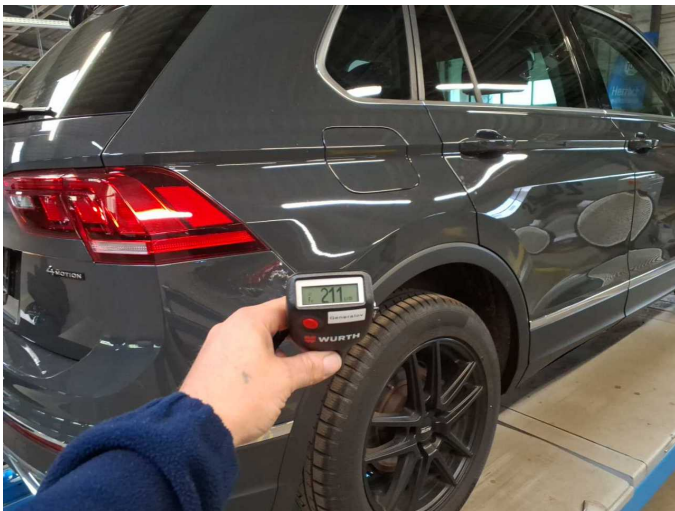
Damage 2: Door - rear right side: Door handle - inside - Deformed -
Replace



Damage 2: Door - rear right side: Door handle - inside - Deformed - Replace



Repainting 1: Bonnet



Repainting 2: Side panel - rear right side



Repainting 3: Door - rear right side



Wartungshistorie

(gemäß Auftraggeber Informationen)

Fahrgestellnummer: WVGZZZ5NZNW032182
Hersteller / Modell: VOLKSWAGEN VOLKSWAGEN Tiguan 2.0 TDI SCR 4MOTION
DSG Elegance

Datum	KM-Stand	Beschreibung
27.03.2025	67.551	AU
29.01.2025	62.986	Reparatur Sonstiges; Systemtest/Eigendiagnose
13.01.2025	62.992	Bremse Sonstiges; Bremsflüssigkeit; Bremsflüssigkeit ern; Bremsklötze vorne; Bremsscheiben vorne; Getriebeöl ern/prüfen; Motoröl b. Wartung; Ölfilter ern; Ölwechsel - Hinterachse; Regelwartungsdienst; Reparatur Sonstiges; Wartung Sonstiges
11.08.2023	31.828	Bremse Sonstiges; Bremsklötze hinten; Bremsscheiben hinten; Motoröl b. Wartung; Ölfilter ern; Regelwartungsdienst; Wartung Sonstiges