

## Expertise

Protocol number: 46307419  
Order No. / Reference: 26511496  
Inspection date: 2 Jul 2026

Manufacturer: Volvo

Model: XC60 T6 AWD Recharge Plus Dark

VIN: LYVUZH1V2PB304038



### Vehicle details

#### Manufacturer / Type / Model / Equipment

Volvo XC60 T6 AWD Recharge Plus Dark

**Vehicle Identification number** LYVUZH1V2PB304038

**Mileage (Read)** 59,305 km

**First registration** 9 May 2023

**Number of holders** 1

**Power / Engine displacement** 186 kw / 1,969 ccm

**Fuel type / Cylinder** Hybr.B/E ext.auf1 / 4

**Gearbox / Number of gears** Automatic / 8

**Type of drive** All-wheel drive

**Type of vehicle** Station wagon

**Colour / colour code** Denim Blue Metallic

**Doors / Seats** 5 / 5

**Upholstery type** Leather

**Colour of upholstery** Black



## Vehicle details

<b>Maintenance booklet / proof</b>	digital proof / complete	<b>Next maintenance in</b>	2 Tag(e)
<b>Last service on / at</b>	07/2025 at 41,841 km		
<b>Key is / should be</b>	2 / 2	<b>FZG documents</b>	ZB#2 (B) was available (copy), ZB#1 (S) was not available.
		<b>Letter No.</b>	GS761014
<b>Previous damage / Accident</b>	Detectable	<b>Repainting</b>	None detectable
<b>Inspection conditions</b>	sufficient	<b>Lifting equipment / pit</b>	No
<b>Test drive</b>	Not performed	<b>Engine function test</b>	Performed
<b>Manufacturer key number/ type code number</b>	9101 / BRS 00017		
<b>Emission standard</b>	EURO6;WLTP;AP;PI/CI; M, N1 I	<b>fine dust sticker</b>	
<b>Permitted total weight</b>	2,660 kg	<b>Empty weight</b>	

## Tyres

### Mounted tyres

#	Tyre size	Type of tyre	Manufacturer	Tread depth
1)	235/55 R19 105H	Summer tyres on Light alloy	Pirelli	6mm / 6mm
2)	235/55 R19 105H	Summer tyres on Light alloy	Pirelli	6mm / 6mm

### Additional tyres

#	Tyre size	Type of tyre	Manufacturer	Tread depth
1)	235/60 R18 107H	Winter tyres on Light alloy	Michelin	6mm / 6mm
2)	235/60 R18 107H	Winter tyres on Light alloy	Michelin	6mm / 6mm

### Replacement

Typ	Tyre size	Type of tyre	Manufacturer	Tread depth
	Tirefit	Expiration date 01/2027		

**Legend: Tread depth information for the left tire is listed first, for the right tire it is listed second on the axle in the direction of travel.**

TÜV SÜD Auto Partner GmbH  
Wiesenring 2  
04159 Leipzig

Inspection location  
ARS Altmann AG Automobillogistik  
Römerstraße 3  
64560 Riedstadt



## Equipment



## Standard equipment

- Airbag, side airbags for driver and front passenger and head/shoulder airbags for all occupants
- Ambient lighting (Extended interior lighting with: - Ambient lighting front and rear - Exit lights front and rear - Work light on the tailgate - Illuminated door pockets and door openers front and rear - Rear footwell lighting - Rear reading lights)
- Automatic climate control with separate temperature control for driver and front passenger (and additional air vents for the 2nd row of seats (integrated in the B-pillar))
- Automatic emergency braking (emergency braking mechanism after the deployment of the airbags or seatbelt pretensioners to prevent secondary accidents)
- Automatic tailgate (electric)
- Cargo area roller blind
- Central locking with two remote controls and integrated emergency keys (automatic locking of doors while driving (can be deactivated) - comfort opening/closing of side windows and, if applicable, sunroof via remote control - panic function integrated into the remote control)
- Child safety lock for the rear doors (electric)
- Digital Services (Google Services (includes Google Maps, Google Assistant, Google Play Store and unlimited data) - Volvo On Call (includes, among other things, alerting the Volvo On Call service center at the touch of a button and additional convenience services via the Volvo CarsApp))
- Driver and passenger side airbags with two-stage deployment system
- Electric auxiliary heater with timer
- Electric windows front and rear (with auto-down and auto-up function)
- Electrically adjustable exterior mirrors
- Electronic differential lock
- Emergency brake lights (brake lights flash rapidly during heavy deceleration; hazard warning lights are automatically activated below 10 km/h)
- Full LED headlights "Thor's Hammer" ACTIVE HIGH BEAM (with extended high beam, dynamic cornering light, intelligent high beam assistant with adaptive headlight range control and integrated LED daytime running lights)
- Glazing: Colored glazing
- High-gloss black applications on the rear of the vehicle
- Hill Start Assist (HSA)
- Illuminated makeup mirror for driver and front passenger
- Interior lighting (headliner, front reading lights, front ambient lighting, front footwell, storage compartment behind center console, glove compartment and luggage compartment)
- Keyless Start (electronic engine start system)
- LED turn signals integrated into the exterior mirrors
- Outdoor temperature display
- ABS - Anti-lock Braking System
- Acoustic Vehicle Alerting System (AVAS) (Acoustic pedestrian/cyclist protection through artificially generated driving noises in the speed range up to 20 km/h)
- Active safety belts with belt tensioners
- Airbag, driver's knee airbag
- All-wheel drive (AWD) (depending on the driving mode)
- Aluminum door sill plates with Recharge lettering, front
- Android infotainment system (9" touchscreen (22.9 cm diagonal) - Bluetooth hands-free system incl. audio streaming - Digital vehicle owner's manual - Digital radio reception (DAB+) - 2 USB-C ports (compatible with Apple iPod/iPhone/iPad))
- Charging box under the cargo floor
- Charging cable Schuko/Type 2 (Mode 2) (7 m length, 1-phase, 10A (for connection to a standard 230-volt household socket))
- CleanZone air quality system with activated carbon filter (automatic recirculation and pre-ventilation of the interior when the vehicle is unlocked)
- Deactivation of the high-voltage battery (in case of a collision)
- Digital instrumentation 2nd generation (Full graphic 12.3" driver display (31.2 cm diagonal) with two variable round instruments and information display (e.g. for navigation map view))
- Door sill area in car color
- Electric parking brake
- Electrically folding exterior mirrors
- Electronic Stability Control (ESC)
- Enhanced air quality system with fine dust filtration according to air quality standard PM2.5
- First aid kit and warning triangle
- Fog sensor for automatic activation of the defroster function
- Front center armrest with integrated storage compartment and cup holders
- Front seat belt height adjustment
- Headrests (5) front and rear
- Heated exterior mirrors and rear window (automatic)
- Hill Descent Control (HDC)
- Immobilizer (deactivation of the high-voltage battery in the event of a collision)
- Intelligent driver information system (delays incoming calls or vehicle information in dangerous situations)
- Interior and exterior mirrors automatically dimming
- ISOFIX mounting for the outer rear seats
- Keyless Drive (electronic access system) (with sensor-controlled tailgate, illuminated door handles and floor lights)
- Lashing eyes in the luggage compartment (foldable)
- Luggage compartment partition net
- On-board computer (with vehicle control functions)
- Package: Parking Assistance (front and rear parking aid with automatic braking intervention (rear))



- Package: Seat Comfort Package (Electrically adjustable front passenger seat - Electrically adjustable driver's seat with memory function for driver's seat and exterior mirror settings (stored in remote control) - Lumbar support (4-way electrically adjustable) for driver and front passenger seats - Memory function for front passenger seat - Adjustable leg support for driver and front passenger seats)
- Passenger side airbag can be deactivated
- Phone: Inductive smartphone charging system (Wirelessly charges smartphones that support the Qi standard on a charging pad)
- Rain sensor
- Rear parking assist with automatic braking intervention (rear)
- Rear view camera
- Roof rails in high-gloss black (integrated)
- Safety Assistance (Automatic emergency braking system with detection of vehicles, cyclists, pedestrians and large animals including intersection braking assistant and emergency braking assistant for oncoming traffic - Connected Safety - Driver Alert - Attention warning - Distance warning - Variable speed limiter - Cruise control - Lane Keeping Aid (LKA) - Active lane keeping assistant - Oncoming Lane Mitigation - Ready to Drive notification - Road Edge Detection - Road Sign Information (RSI) - Traffic sign recognition)
- Sport exterior mirrors in high-gloss black
- Sport front and rear apron
- Stainless steel loading sill protector in the luggage compartment
- Start/Stop technology
- Steering wheel: Three-spoke steering wheel, leather-free
- Third brake light (emergency brake lights (brake lights flash rapidly in case of heavy deceleration; hazard warning lights are automatically activated at speeds below 10 km/h))
- Tire pressure monitoring system (with tire-specific pressure loss warning)
- Upholstery: Leather/imitation leather comfort seats anthracite (incl. rear center armrest - insert: metal mesh - headliner: light beige)
- Wheels: 19" 5-V-spoke alloy wheels, sport design, diamond cut/high-gloss black (with all-season tires 235/55 R19 with rims 7.5 x 19")

### Extra equipment

- Package: Driver Assistance Package (Driver Assistance - Adaptive Cruise Control - Emergency Stop Assist (automatic emergency stopping system in case of failure to heed warnings due to lack of steering, braking and acceleration by the driver, including activation of the hazard warning lights and automatic braking to a standstill) - Pilot Assist (lane guidance assistant with adaptive cruise control up to speeds of 130 km/h))

- Package: Winter Package (front seat heating - rear seat heating - steering wheel heating)
- Panoramic glass sliding sunroof with lifting function (electric) (with integrated, continuously adjustable sunshade)
- Parking ticket holder
- Power outlet (12-volt connection in the luggage compartment)
- Preparation for Trailer Stability Assist (TSA)
- Radio accessories: Two USB-C ports on the back of the center console
- Radio: Audio system High Performance Sound (220 watts of power - 10 speakers)
- Rear seats in a 40/60 split or completely foldable with pass-through function
- Roof edge spoiler
- Run-off Road Protection (preventive protection system in case of unintentional leaving of the road or impending rollovers and door unlocking)
- Safety braking system with disc brakes all around (internally ventilated) (automatic brake system pre-tensioning, brake assist and automatic hold function)
- Seats: Driver and front passenger seats height adjustable (electrically) (including manual tilt adjustment for the driver's seat)
- Speed-sensitive power steering
- Sport front grille with horizontal struts and grille surround in high-gloss black
- Steering wheel adjustable for height and reach
- Steering wheel: Multifunction buttons on the steering wheel
- Transmission: 8-speed automatic transmission
- Warning tone/indicator when seat belts are not fastened (for all seats)
- Wheels: Tire sealant (Incl. 12-volt compressor, maximum speed 80 km/h)
- Whiplash Protection System (WHIPS) (including immersion protection on all seats and energy-absorbing front seat cushions)
- Window surround in high-gloss black

- Alarm system with motion/tilt sensor (security lock)
- Paint finish: Metallic paint
- Parking camera with 360° surround view (including front, side and rear parking aid with automatic braking intervention (rear))



## Brief expert findings

Documents submitted	At the time of the inspection, the vehicle registration certificate Part 2 (title) was available, but the vehicle registration certificate Part 1 (document) was not. (Copy)
VIN comparison	The vehicle identification number (VIN) was read from the vehicle and its conformity with the submitted documents was confirmed by the undersigned during the inspection.
Inspection	The inspection conditions were sufficient for the assessment of the vehicle. No lifting equipment or pit was available for inspecting the vehicle. Therefore, inspection of the vehicle's underside was only possible to a limited extent.
Test drive	No test drive/shunting maneuver was carried out during the inspection of the vehicle.
Engine function test	An engine test run was performed.

## Value reducing factors

No.	Component group	Description
1	Side panel - rear right side	Side panel - dent(s) - Smart repair
2	Roof	Roof rail - right side - dent(s) - Smart repair
3	Roof	Roof - dent(s) - Smart repair
4	Bonnet	Bonnet - dent(s) - Smart repair
5	Rear bumper	Rear bumper - Scratch(es) - Paint
6	Door - front left side	Door - Dent / paintcoat damage - Paint

## Accident damages

### No. Accident

- 1 Front, Side right

## Order/Scope of Order

An order was placed to prepare a sales report for the described vehicle. This report includes the following:

- Description of key vehicle information
- Documentation of equipment features  
(*Delivery by third-party service providers*)
- Documentation of damage, defects, missing parts
- Documentation of prior damage, unrepaired prior damage, repainting
- A brief visual or functional inspection of the equipment details, if possible.  
(*Functional testing of driver assistance systems is not included in the scope of services!*)
- a photographic documentation of the vehicle



## Basis for the order

This product is based on the guidelines for vehicle returns and valuations published by Alphabet Fleet GmbH. The expert makes the specific findings in each individual case objectively, within the framework of the prescribed standards, based on their own expertise.

The vehicle inspection takes place in a fully assembled, unassembled state.

Damage or defects that can only be detected during disassembly/diagnostic work or through further investigation remain within the realm of prognostic risk. An increased risk exists due to concealed defects caused by fraudulent misrepresentation and which were not identifiable by the expert.

Damage or defects resulting from normal use or wear and tear of the vehicle will be accepted in accordance with the applicable standard.

There was no explicit identification or monetary consideration of the expected features within the product.

Features which, in their nature and extent, slightly exceed normal use but do not constitute unacceptable damage, will be documented and indicated as signs of wear, if applicable.

Damage or defects that, according to the applicable standard, can no longer be attributed to normal use or wear and tear are listed under "Value Reducing Factors" in the product description.

Depending on the product specification, a monetary ID can be provided. If this takes place, the costs can be 100% d or pro rata depending on the vehicle's age and mileage.

## Previous damages

Non-repaired previous damages were found at the vehicle. The necessary repair costs are listed in the expert report or if necessary, are listed in detail in a separately enclosed repair cost calculation.

## Comments

- Die Unterbodenbesichtigung war nur ebenerdig & eingeschränkt möglich. Mehrkosten möglich.

- Der beiliegende Winterradsatz ist kein Bestandteil des Auslieferungsumfangs.

- Die beigefügte Reparaturkostenkalkulation wurde nach bestem Wissen und Gewissen unter eingeschränkten Besichtigungsbedingung im demontagefreien Zustand erstellt. Es können aufgrund verdeckter Beschädigung erhebliche Mehrkosten und somit Abweichung der für den Unfall ausgewiesenen Reparaturkosten nicht ausgeschlossen werden



Figure 1: Diagonal front (left)



Figure 2: Diagonal front (right)



Figure 3: Diagonal rear (left)



Figure 4: Diagonal rear (right)

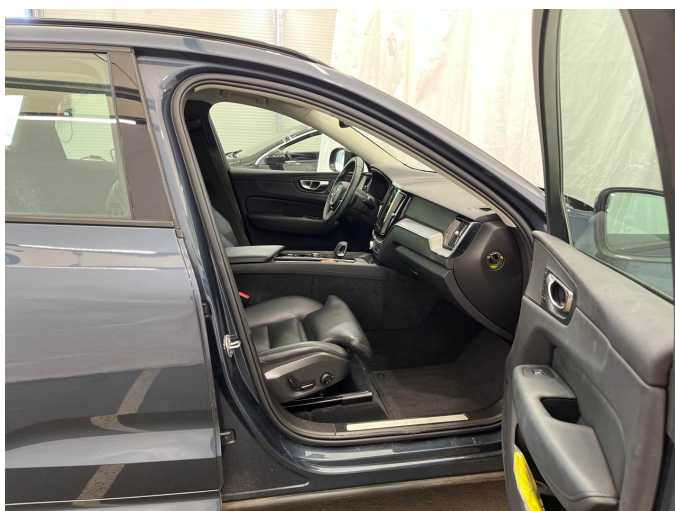


Figure 5: Interior - front



Figure 6: Interior - rear



Figure 7: Instrument cluster



Figure 8: Instrument panel



Figure 9: Interior 360° view



Figure 10: Cargo area

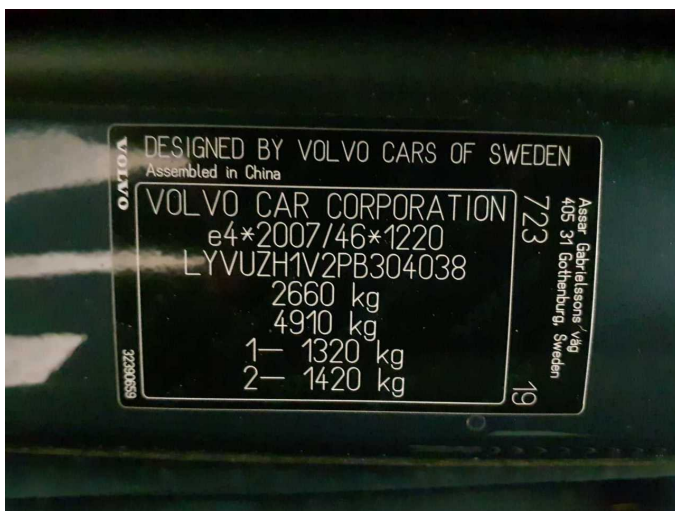


Figure 11: VIN



Figure 12: Mounted tyres

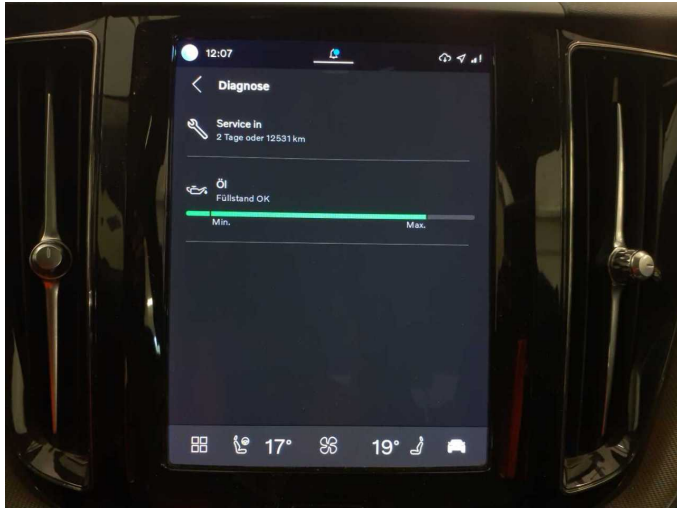


Figure 13: Documents



Figure 14: Documents

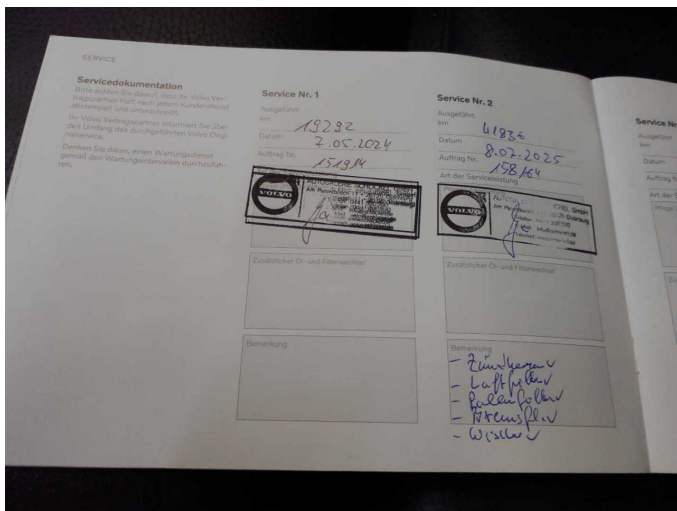


Figure 15: Documents



Figure 16: Additional tyres

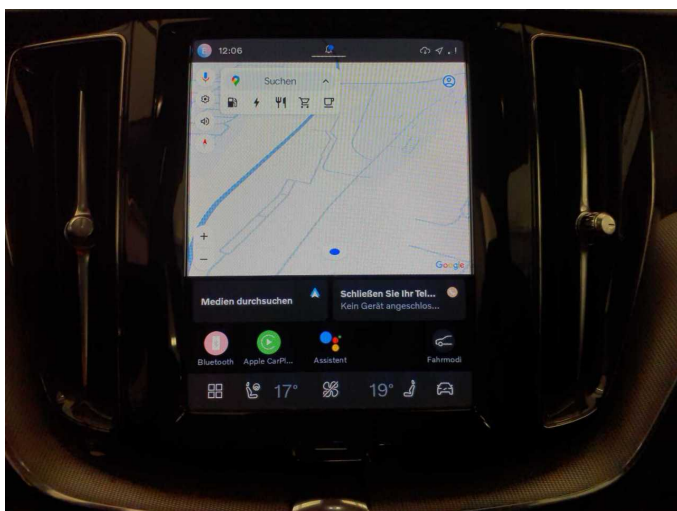


Figure 17: Navigation

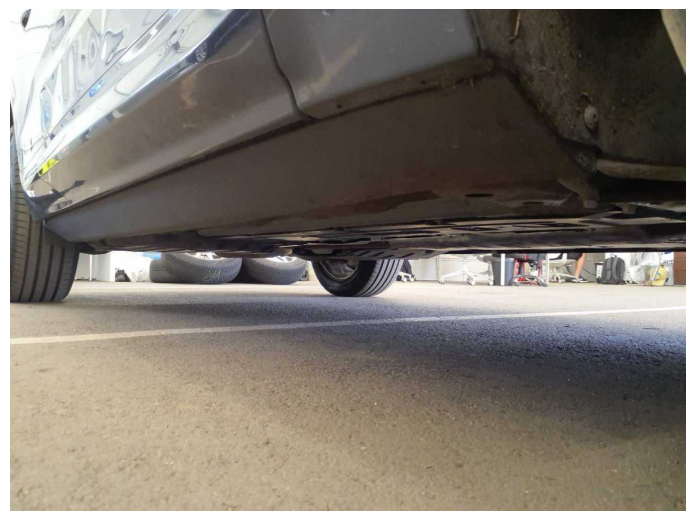


Figure 18: Misc.



Figure 19: Misc.



Figure 20: Misc.



Figure 21: Misc.



Figure 22: Misc.



Figure 23: Misc.



Figure 24: Misc.



Figure 25: Misc.

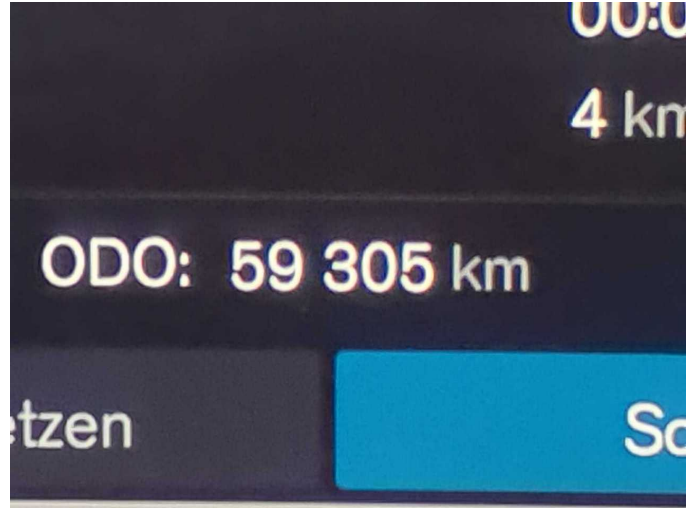


Figure 26: Misc.



Figure 27: Misc.



Figure 28: Misc.



Figure 29: Misc.



Figure 30: Misc.



Figure 31: Misc.



Figure 32: Misc.



Figure 33: Misc.

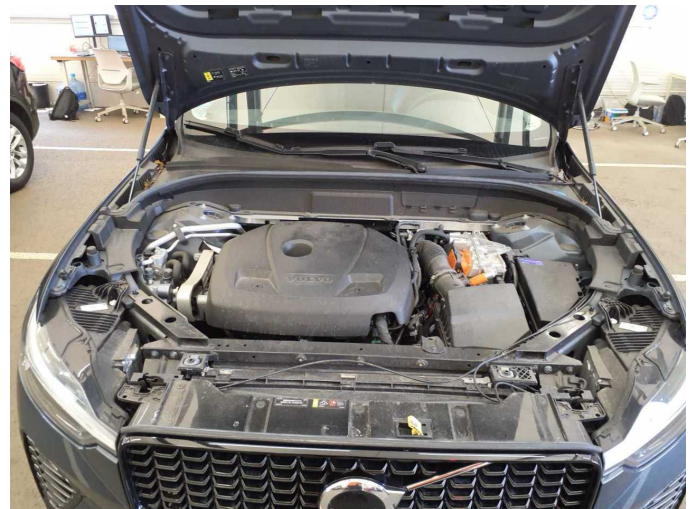
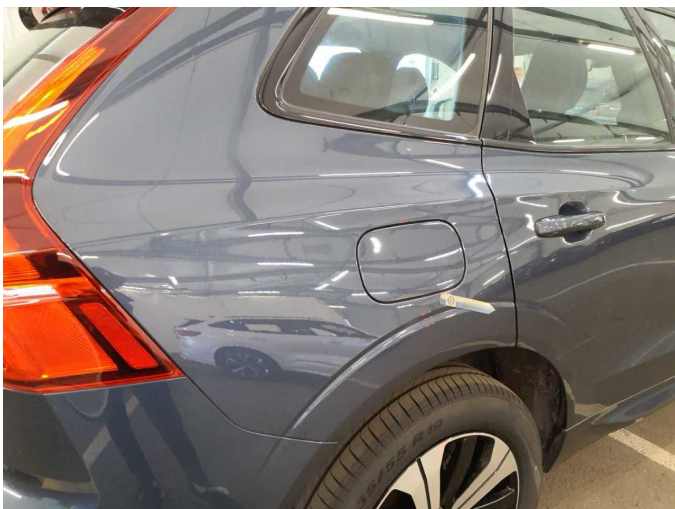


Figure 34: Misc.



Damage 1: Side panel - rear right side: Side panel - dent(s) - Smart repair



Damage 1: Side panel - rear right side: Side panel - dent(s) - Smart repair



**Damage 2:** Roof: Roof rail - right side - dent(s) - Smart repair



**Damage 2:** Roof: Roof rail - right side - dent(s) - Smart repair



**Damage 3:** Roof: Roof - dent(s) - Smart repair



**Damage 3:** Roof: Roof - dent(s) - Smart repair



**Damage 4:** Bonnet: Bonnet - dent(s) - Smart repair



**Damage 4:** Bonnet: Bonnet - dent(s) - Smart repair



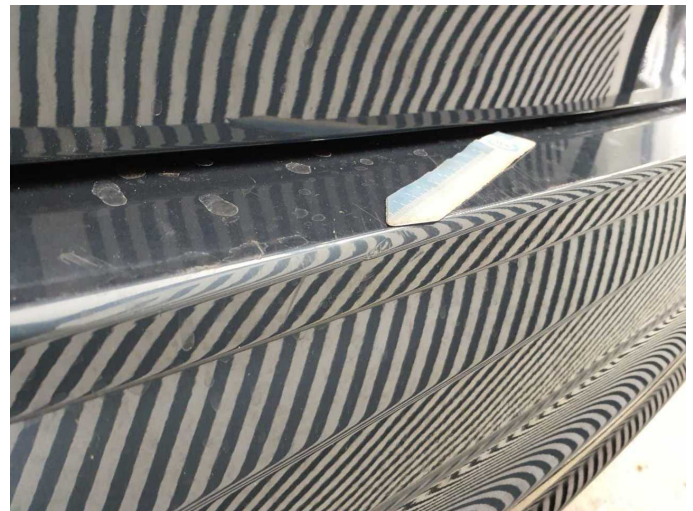
**Damage 4:** Bonnet: Bonnet - dent(s) - Smart repair



**Damage 5:** Rear bumper: Rear bumper - Scratch(es) - Paint



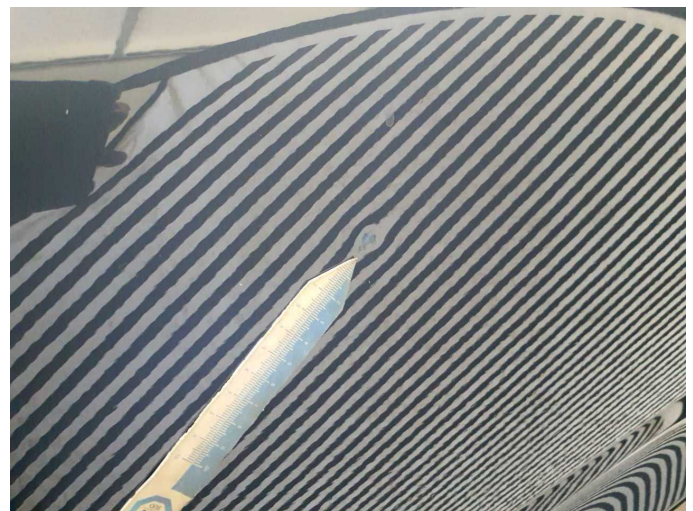
**Damage 5:** Rear bumper: Rear bumper - Scratch(es) - Paint



**Damage 5:** Rear bumper: Rear bumper - Scratch(es) - Paint



**Damage 6:** Door - front left side: Door - Dent / paintcoat damage - Paint



**Damage 6:** Door - front left side: Door - Dent / paintcoat damage - Paint



**Damage 6:** Door - front left side: Door - Dent / paintcoat damage - Paint



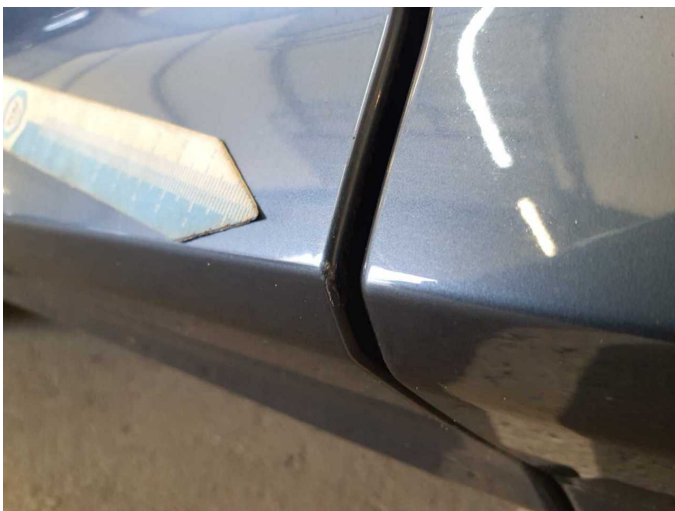
**Damage 6:** Door - front left side: Door - Dent / paintcoat damage - Paint



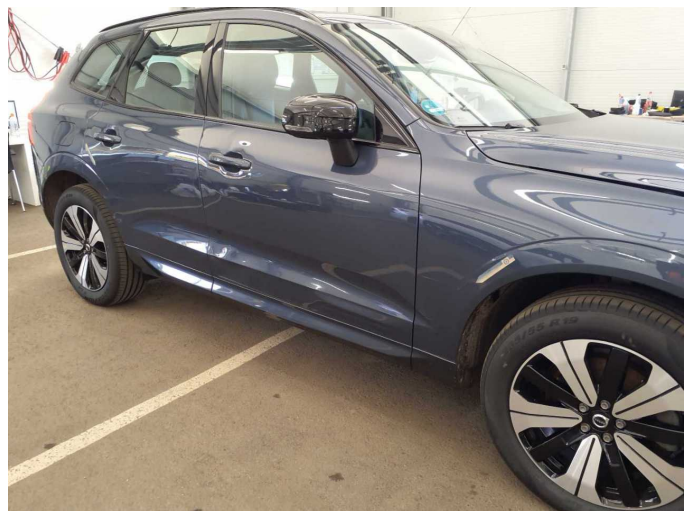
**Damage 6:** Door - front left side: Door - Dent / paintcoat damage - Paint



**Damage 6:** Door - front left side: Door - Dent / paintcoat damage - Paint



**Damage 6:** Door - front left side: Door - Dent / paintcoat damage - Paint



**Accident 1:** Front, Side right



**Accident 1: Front, Side right**



**Accident 1: Front, Side right**



**Accident 1: Front, Side right**



**Accident 1: Front, Side right**



**Accident 1: Front, Side right**



**Accident 1: Front, Side right**



**Accident 1: Front, Side right**



**Accident 1: Front, Side right**



**Accident 1: Front, Side right**



**Accident 1: Front, Side right**



**Accident 1: Front, Side right**



**Accident 1: Front, Side right**



**Accident 1: Front, Side right**



**Accident 1: Front, Side right**



**Accident 1: Front, Side right**



**Accident 1: Front, Side right**



**Accident 1: Front, Side right**



**Accident 1: Front, Side right**



**Accident 1: Front, Side right**



**Accident 1: Front, Side right**



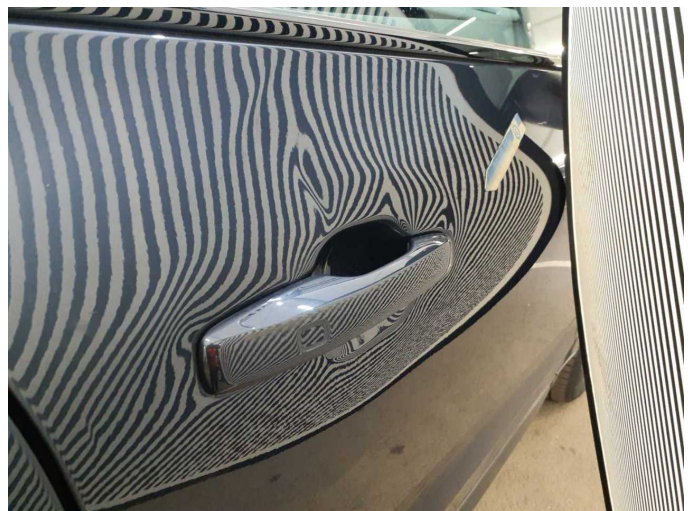
**Accident 1: Front, Side right**



**Accident 1: Front, Side right**



**Accident 1: Front, Side right**



**Accident 1: Front, Side right**



**Accident 1:** Front, Side right



**Accident 1:** Front, Side right



**Accident 1:** Front, Side right



**Accident 1:** Front, Side right



**Accident 1:** Front, Side right



# Wartungshistorie

(gemäß Auftraggeber Informationen)

Fahrgestellnummer: LYVUZH1V2PB304038

Hersteller / Modell: VOLVO VOLVO XC60 T6 AWD Recharge Plus Dark

Datum	KM-Stand	Beschreibung
08.07.2025	41.841	Bremsflüssigkeit; Bremsflüssigkeit ern; Luftfiltereinsatz ern; Motoröl b. Wartung; Ölfilter ern; Ölwechsel; Regelwartungsdienst; Reparatur Sonstiges; Wartung Sonstiges; Zündkerzen ern
07.05.2024	19.297	Motoröl b. Wartung; Ölfilter ern; Ölwechsel; Regelwartungsdienst; Wartung Sonstiges