

Expertise

Protocol number: 45971280
Order No. / Reference: 26434804
Inspection date: 16 Jun 2026

Manufacturer: Skoda

Model: Octavia Combi 2.0 TDI DSG RS

VIN: TMBJK8NX2PY097698



Vehicle details

Manufacturer / Type / Model / Equipment

Skoda Octavia Combi 2.0 TDI DSG RS

Vehicle Identification number TMBJK8NX2PY097698

Mileage (Read) 107,761 km

First registration 19 Apr 2023

Number of holders 1

Next periodical technical inspection 04/2026

(Report not on hand)

Power / Engine displacement 147 kw / 1,968 ccm

Fuel type / Cylinder Diesel / 4

Gearbox / Number of gears Automatic / 7

Type of drive Front drive

Type of vehicle Station wagon

Colour / colour code Graphite Grau Metallic

Doors / Seats 5 / 5

Upholstery type Cloth

Colour of upholstery Grey-Anthracite

Re-import no

readiness to drive Roadworthy



Vehicle details			
Maintenance booklet / proof	digital evidence / incomplete	Next maintenance in	12,200 km
Last service on / at	12/2025 at 92,336 km		
Key is / should be	2 / 2	FZG documents	ZB#2 (B) was available (copy), ZB#1 (S) was not available.
		Letter No.	GQ561364
Previous damage / Accident	None detectable	Repainting	None detectable
Inspection conditions	sufficient	Lifting equipment / pit	yes
Test drive	Not performed	Engine function test	Performed
readiness to drive	Roadworthy		
Manufacturer key number/ type code number	8004 / AV1 00101		
Emission standard	EURO6;WLTP;AP;PI/CI; M, N1 I	fine dust sticker	
Permitted total weight	2,042 kg	Empty weight	

Tyres

Mounted tyres				
#	Tyre size	Type of tyre	Manufacturer	Tread depth
1)	225/45 R18 95Y	Summer tyres on Light alloy	Continental	5mm / 5mm
2)	225/45 R18 91Y	Summer tyres on Light alloy	Bridgestone	5mm / 5mm
Additional tyres				
#	Tyre size	Type of tyre	Manufacturer	Tread depth
1)	205/55 R17 95V	Winter tyres on Light alloy	Goodyear	8mm / 8mm
2)	205/55 R17 95V	Winter tyres on Light alloy	Goodyear	5mm / 5mm
Replacement				
Typ	Tyre size	Type of tyre	Manufacturer	Tread depth
	Tirefit	Expiration date 01/2027		

Legend: Tread depth information for the left tire is listed first, for the right tire it is listed second on the axle in the direction of travel.

TÜV SÜD Auto Partner GmbH
Wiesenring 2
04159 Leipzig

Inspection location
Mosolf SE & Co.KG
August-Horch-Straße 1
04519 Rackwitz



Equipment



Standard equipment

- Storage compartment in the luggage compartment with cargo element
- Airbag, driver's knee airbag
- Airbag, front side airbags
- Ambient lighting
- Traction control (ASR)
- Automatically dimming exterior mirror (driver's side)
- Electrically adjustable and heated exterior mirrors
- Heated windshield washer nozzles including 5l washer fluid reservoir
- Glasses compartment in the headliner
- AERO roof rails in gloss black
- Diesel particulate filter
- Tachometer
- Electronic parking brake including auto-hold function
- Electronic Stability Control (ESC)
- Electric windows front and rear, including anti-pinch protection and child safety lock
- Cruise control system
- Tinted windows
- Heated rear window
- Rear window wiper including windshield washer system
- Interior mirror automatically dimming
- Kessy, keyless entry and start-stop system
- Child safety lock for the rear doors and windows
- Removable boot cover
- LED fog lights
- LED license plate lights
- LED matrix headlights and dynamic high beam assist (AFS)
- Steering wheel: height and reach adjustable
- Rear center armrest with pass-through option
- Front center armrest, including storage compartment
- Fatigue detection
- Pedals in stainless steel look
- Progressive steering
- Radio accessories: 2 USB-C ports on the front
- Radio accessories: 8 speakers
- Radio accessories: Digital radio reception DAB+
- Radio accessories: Voice control
- Tire pressure monitoring
- Wheels: 18" Comet alloy wheels, black
- Safety lights in the front side doors
- Seats: Height-adjustable driver and passenger seats
- Seats: Sports seats with integrated headrests in the front and height-adjustable headrests in the rear.
- Lane keeping assistant (Lane Assist)
- Sunset (rear window and rear side windows tinted dark)
- Phone: Wireless SmartLink for Apple CarPlay
- Textile floor mats
- Lashing eyes in the trunk
- Storage compartments
- Airbag, driver and passenger
- Airbag, head airbags
- Airbag: Center airbag front
- Anti-lock braking system (ABS)
- Center section of the dashboard with microfiber cover in black and red decorative stitching
- Electrically folding exterior mirrors
- Hill start assist
- Hydraulic brake assist (HBA)
- black headliner
- Dark Carbon decorative trim
- Digital Cockpit Plus
- Third brake light
- Electronic transverse differential lock (XDS+)
- Driving profile selection
- Front radar assistant including city emergency braking function and pedestrian and cyclist detection
- Transmission: 7-speed dual-clutch transmission (DSG)
- Green tec: Start/stop system including brake energy recuperation
- Rear spoiler
- ISOFIX preparations on the front passenger seat and the outer rear seats including top tether anchorage
- Climatronic air conditioning (2-zone)
- Paint finish: Special paint finish, solid color
- LED taillights in crystal glass look and animated turn signals
- LED headlights with LED daytime running lights
- Remote release of the rear seat backrests in the trunk
- Steering wheel: Leather steering wheel in sporty design with multifunction buttons including paddle shifters.
- Engine drag torque control (MSR)
- Front and rear parking sensors
- Upholstery: Cloth
- Radio: Bolero music system with capacitive 10" color display
- Radio accessories: Bluetooth hands-free system
- Radio accessories: SmartLink
- Rain sensor and driving light assistant
- Tire mobility kit
- Seat belts
- Seats: Heated front seats
- Seats: Rear seat backrest split 60:40, foldable
- SKODA Care Connect
- Speed limiter
- 12V socket in the trunk
- Telephone: Phonebox with inductive charging function (connection via external antenna)
- Front door sill trims
- Immobiliser



- Central locking including remote control integrated into the key and EASY Start

Extra equipment

- Swiveling trailer hitch including trailer stabilization and adapter
- Package: Comfort Plus (Combi RS, Sportline) (3-zone Climatronic - Acoustic glazing in the front side windows - Heated outer rear seats - Heated steering wheel - 230 V socket and 3 x USB charging ports - Sunshades in the rear doors - Multifunctional storage compartment in the boot - Sleeping headrests in the rear - Electric tailgate operation with comfort opening)
- Heated windscreen
- Paint finish: Metallic
- Package: Infotainment package Business Columbus (Style, RS) DSG (Columbus navigation system - Infotainment Online (3-year term), online map updates: for navigation, traffic situation, petrol stations and parking space search - 3 USB charging ports - Head-Up Display - Adaptive Cruise Control (ACC) - Traveller Assist system: - Traffic sign recognition - Adaptive Lane Keeping Assist - Emergency and traffic jam assist - Capacitate steering wheel with Hands Off Detection)

Brief expert findings

Documents submitted	At the time of the inspection, the vehicle registration certificate Part 2 (title) was available, but the vehicle registration certificate Part 1 (document) was not. (Copy)
VIN comparison	The vehicle identification number (VIN) was read from the vehicle and its conformity with the submitted documents was confirmed by the undersigned during the inspection.
Inspection	The inspection conditions were sufficient for the assessment of the vehicle. Lifting equipment and/or a pit were available for examining the vehicle.
Test drive	No test drive/shunting maneuver was carried out during the inspection of the vehicle.
Engine function test	An engine test run was performed.
readiness to drive	The vehicle was roadworthy at the time of inspection.

Value reducing factors

No.	Component group	Description
1	Trim / covers	Floor mats - Damaged - Replace
2	Door - front left side	Door handle - outside - Scratch(es) - Smart repair
3	Trim / covers	Floor covering - front left side - Burn hole (cigarettes) - Smart repair
4	Misc.	Main inspection - Due - Perform
5	Interior	Interior - Odour - Ozone treatment
6	Door - front left side	Door (Innen) - Dent / paintcoat damage - Smart repair
7	Rear bumper	Rear bumper - Damaged - repair according to calculation
8	Front bumper	Front bumper - Damaged - repair according to calculation

Wear and tear

No.	Component group	Description
1	Side panel - rear left side	Side panel - dent(s)
2	Trim / covers	Trim / covers - Scratched
3	Documents	Documentation for retrofitted accessories (Winterräder) - Missing - No deduction

The vehicle shows signs of wear and tear commensurate with its age and use.



Order/Scope of Order

An order was placed to prepare a sales report for the described vehicle. This report includes the following:

- Description of key vehicle information
- Documentation of equipment features
(Delivery by third-party service providers)
- Documentation of damage, defects, missing parts
- Documentation of prior damage, unrepaired prior damage, repainting
- A brief visual or functional inspection of the equipment details, if possible.
(Functional testing of driver assistance systems is not included in the scope of services!)
- a photographic documentation of the vehicle

Basis for the order

This product is based on the guidelines for vehicle returns and valuations published by Alphabet Fleet GmbH. The expert makes the specific findings in each individual case objectively, within the framework of the prescribed standards, based on their own expertise.

The vehicle inspection takes place in a fully assembled, unassembled state.

Damage or defects that can only be detected during disassembly/diagnostic work or through further investigation remain within the realm of prognostic risk. An increased risk exists due to concealed defects caused by fraudulent misrepresentation and which were not identifiable by the expert.

Damage or defects resulting from normal use or wear and tear of the vehicle will be accepted in accordance with the applicable standard.

There was no explicit identification or monetary consideration of the expected features within the product.

Features which, in their nature and extent, slightly exceed normal use but do not constitute unacceptable damage, will be documented and indicated as signs of wear, if applicable.

Damage or defects that, according to the applicable standard, can no longer be attributed to normal use or wear and tear are listed under "Value Reducing Factors" in the product description.

Depending on the product specification, a monetary ID can be provided. If this takes place, the costs can be 100% d or pro rata depending on the vehicle's age and mileage.

Previous damages

No apparent prior damage that had been repaired could be found on the vehicle.

Comments

- Winterradsatz ist kein Bestandteil des Auslieferungsumfangs.



Figure 1: Diagonal front (left)



Figure 2: Diagonal front (right)



Figure 3: Diagonal rear (left)



Figure 4: Diagonal rear (right)



Figure 5: Interior - front



Figure 6: Interior - rear



Figure 7: Instrument cluster



Figure 8: Instrument panel



Figure 9: Interior 360° view

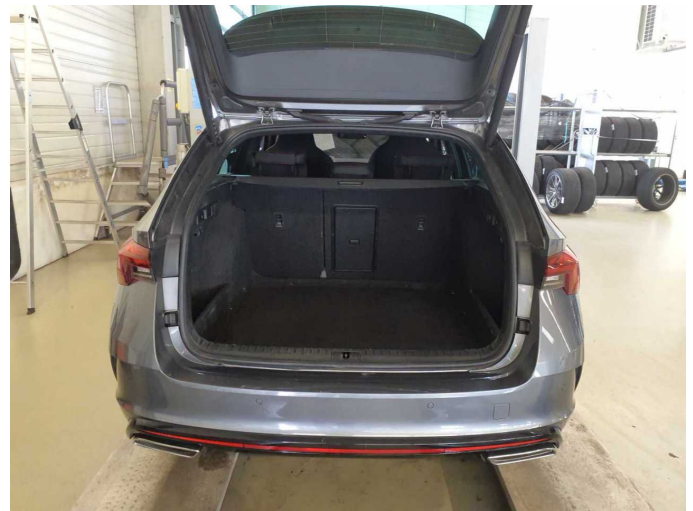


Figure 10: Cargo area

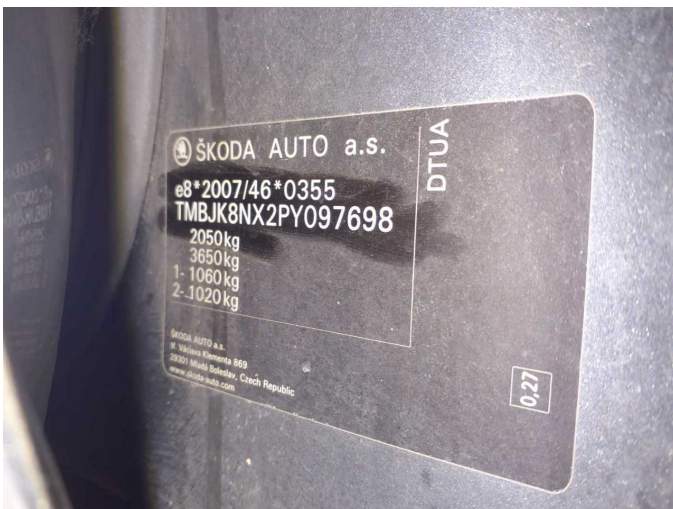


Figure 11: VIN



Figure 12: Mounted tyres

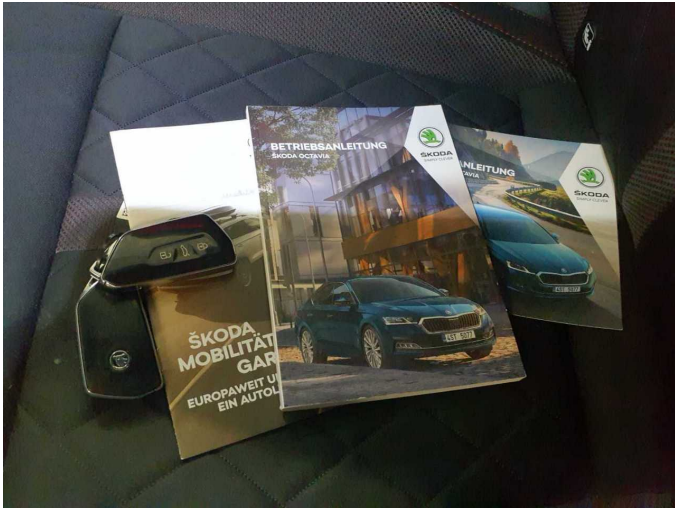


Figure 13: Documents



Figure 14: Documents



Figure 15: Additional tyres



Figure 16: Navigation



Figure 17: Misc.



Figure 18: Misc.



Figure 19: Misc.



Figure 20: Misc.

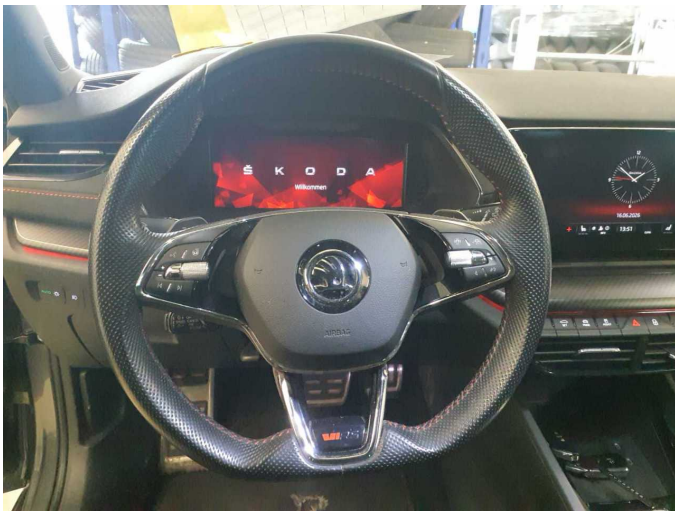


Figure 21: Misc.



Figure 22: Misc.

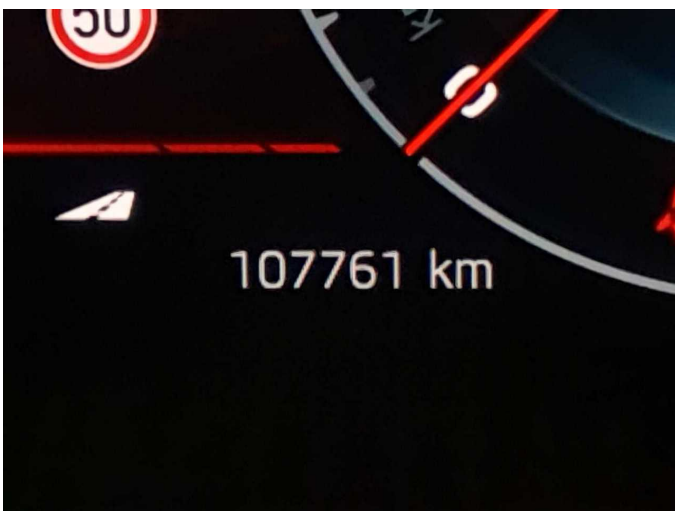


Figure 23: Misc.



Figure 24: Misc.



Figure 25: Misc.



Figure 26: Misc.

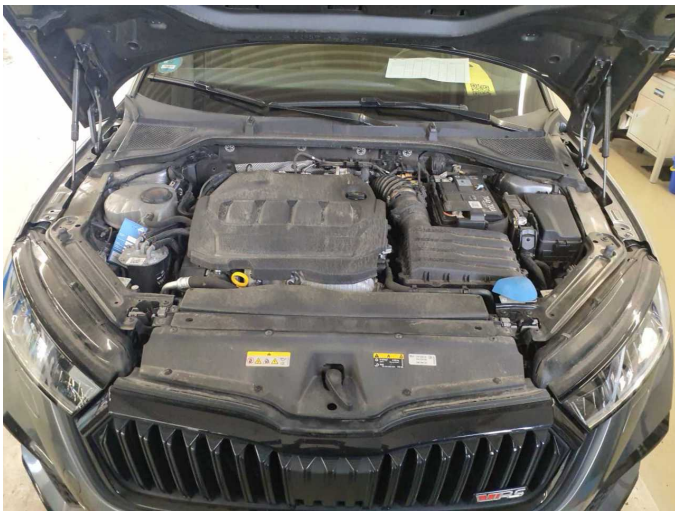


Figure 27: Misc.



Figure 28: Misc.



Figure 29: Misc.



Figure 30: Misc.

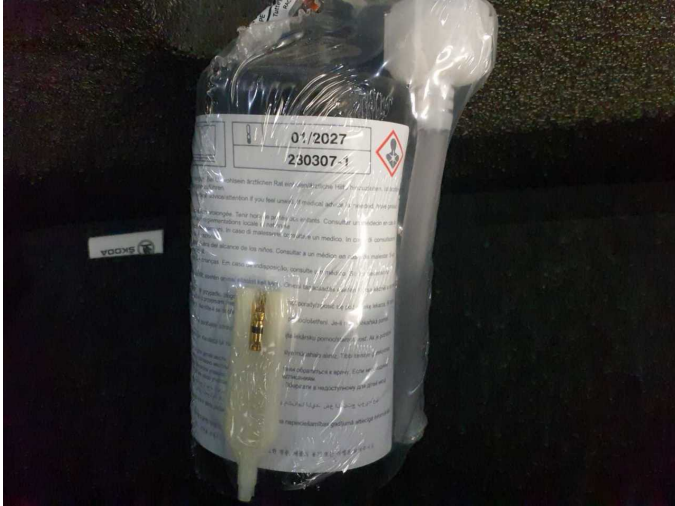


Figure 31: Misc.



Figure 32: Misc.



Figure 33: Misc.

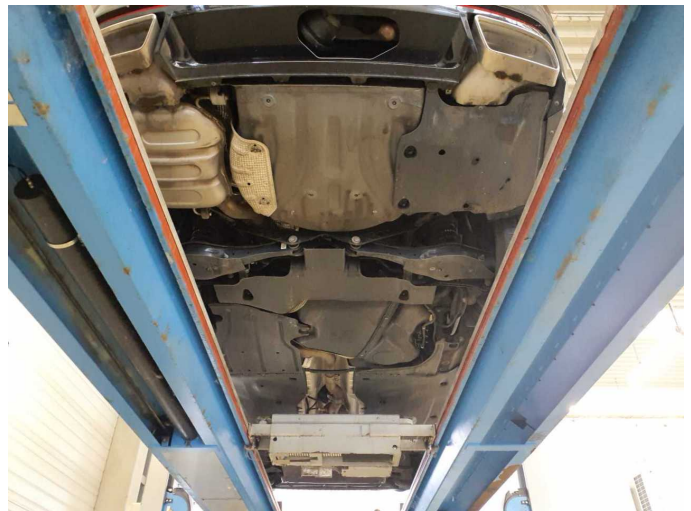
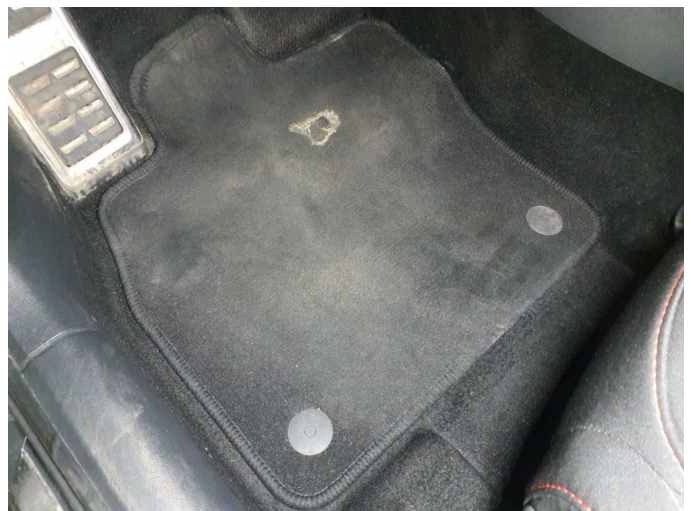


Figure 34: Misc.



Figure 35: Misc.



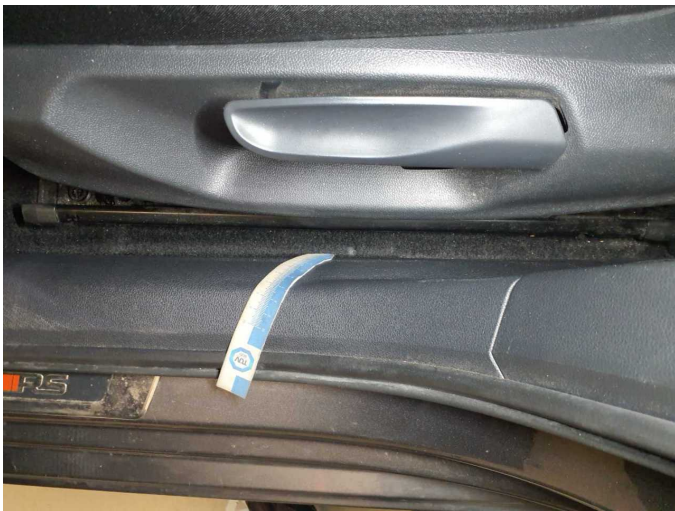
Damage 1: Trim / covers: Floor mats - Damaged - Replace



Damage 2: Door - front left side: Door handle - outside - Scratch(es) - Smart repair



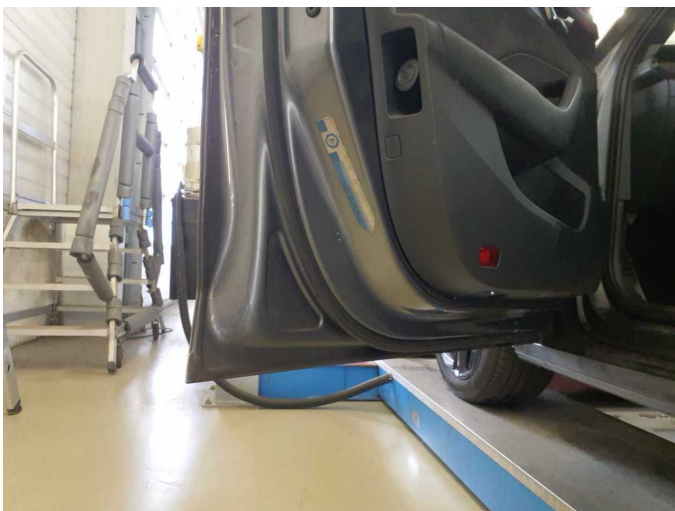
Damage 2: Door - front left side: Door handle - outside - Scratch(es) - Smart repair



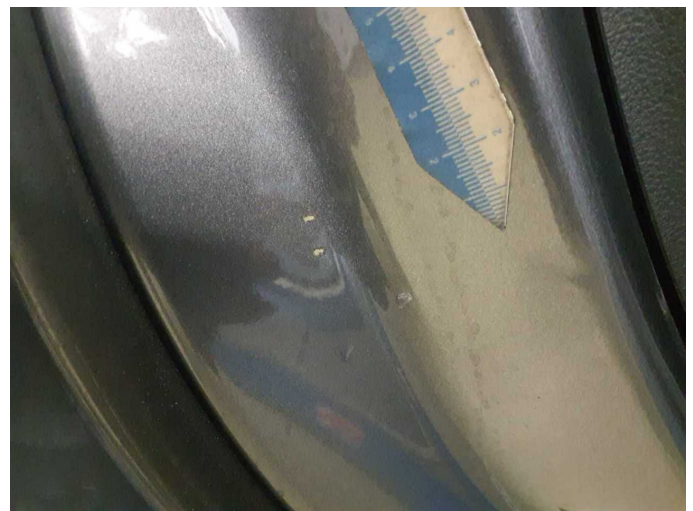
Damage 3: Trim / covers: Floor covering - front left side - Burn hole (cigarettes) - Smart repair



Damage 3: Trim / covers: Floor covering - front left side - Burn hole (cigarettes) - Smart repair



Damage 6: Door - front left side: Door (Innen) - Dent / paintcoat damage - Smart repair



Damage 6: Door - front left side: Door (Innen) - Dent / paintcoat damage - Smart repair



Damage 6: Door - front left side: Door (Innen) - Dent / paintcoat damage - Smart repair



Damage 7: Rear bumper: Rear bumper - Damaged - repair according to calculation



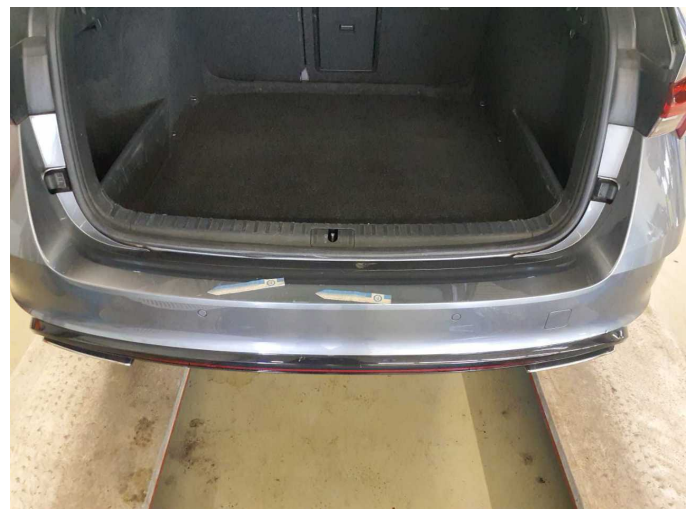
Damage 7: Rear bumper: Rear bumper - Damaged - repair according to calculation



Damage 7: Rear bumper: Rear bumper - Damaged - repair according to calculation



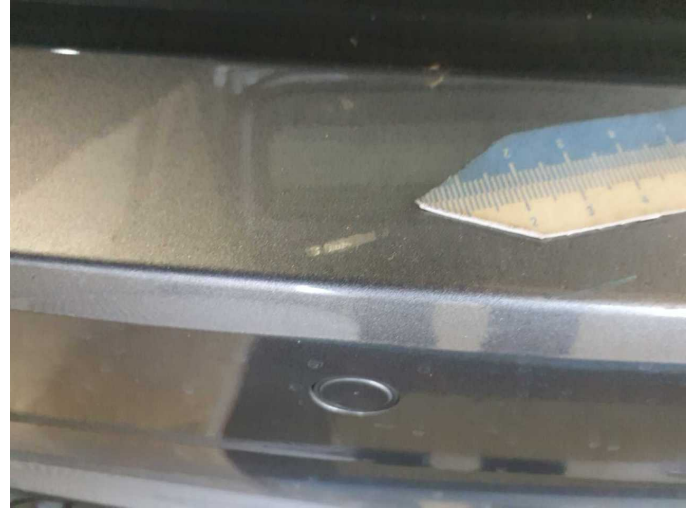
Damage 7: Rear bumper: Rear bumper - Damaged - repair according to calculation



Damage 7: Rear bumper: Rear bumper - Damaged - repair according to calculation



Damage 7: Rear bumper: Rear bumper - Damaged - repair according to calculation



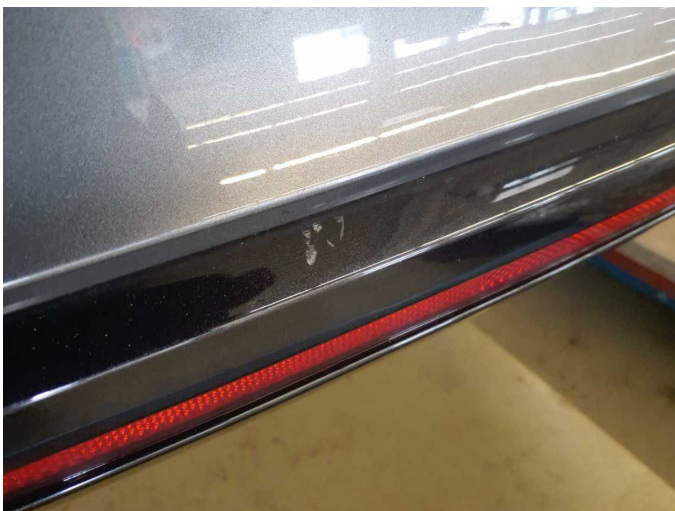
Damage 7: Rear bumper: Rear bumper - Damaged - repair according to calculation



Damage 7: Rear bumper: Rear bumper - Damaged - repair according to calculation



Damage 7: Rear bumper: Rear bumper - Damaged - repair according to calculation



Damage 7: Rear bumper: Rear bumper - Damaged - repair according to calculation



Damage 7: Rear bumper: Rear bumper - Damaged - repair according to calculation



Damage 8: Front bumper: Front bumper - Damaged - repair according to calculation



Damage 8: Front bumper: Front bumper - Damaged - repair according to calculation



Damage 8: Front bumper: Front bumper - Damaged - repair according to calculation



Damage 8: Front bumper: Front bumper - Damaged - repair according to calculation



Damage 8: Front bumper: Front bumper - Damaged - repair according to calculation



Wear and tear 2: Trim / covers: Trim / covers - Scratched



Wartungshistorie

(gemäß Auftraggeber Informationen)

Fahrgestellnummer: TMBJK8NX2PY097698
Hersteller / Modell: SKODA SKODA Octavia Combi 2.0 TDI DSG RS

Datum	KM-Stand	Beschreibung
30.12.2025	92.336	Batterie ern; Bremse Sonstiges; Bremsflüssigkeit; Bremsflüssigkeit ern; Bremsklötze hinten; Bremsscheiben hinten; Kraftstofffilter ern; Luftfiltereinsatz ern; Motoröl b. Wartung; Ölfilter ern; Regelwartungsdienst; Systemtest/Eigendiagnose; Systemtest/Eigendiagnose; Wartung Sonstiges
03.01.2025	59.737	Bremse Sonstiges; Bremsklötze vorne; Bremsscheiben vorne; Motoröl b. Wartung; Ölfilter ern; Regelwartungsdienst; Wartung Sonstiges
13.02.2024	30.122	Motoröl b. Wartung; Ölfilter ern; Regelwartungsdienst; Wartung Sonstiges