

Expertise

Protocol number: 46131818
Order No. / Reference: 26471398
Inspection date: 19 Jun 2026

Manufacturer: Volkswagen

Model: Caddy 2.0 TDI (7-Si.) Maxi Comfortline

VIN: WV2ZZZ2KZLX018164



Vehicle details

Manufacturer / Type / Model / Equipment

Volkswagen Caddy 2.0 TDI (7-Si.) Maxi Comfortline

Vehicle Identification number	WV2ZZZ2KZLX018164
Mileage (Read)	92,574 km
First registration	13 Nov 2019
Number of holders	1
Next periodical technical inspection	01/2027
(Report on hand)	

Power / Engine displacement	110 kw / 1,968 ccm
------------------------------------	--------------------

Fuel type / Cylinder	Diesel / 4
-----------------------------	------------

Gearbox / Number of gears	Manual / 6
----------------------------------	------------

Type of drive	Front drive
----------------------	-------------

Type of vehicle	Van
------------------------	-----

Colour / colour code	Reflexsilber Metallic
-----------------------------	-----------------------

Doors / Seats	5 / 7
----------------------	-------

Upholstery type	Cloth
------------------------	-------

Colour of upholstery	Anthracite-Black
-----------------------------	------------------



Vehicle details			
Maintenance booklet / proof	digital proof / complete	Next maintenance in	12,100 km
Last service on / at	02/2026 at 90,931 km		
Key is / should be	2 / 2	FZG documents	ZB#2 (B) was available (copy), ZB#1 (S) was not available.
		Letter No.	FN412134
Previous damage / Accident	None detectable	Repainting	None detectable
Inspection conditions	sufficient	Lifting equipment / pit	No
Test drive	Not performed	Engine function test	Performed
Manufacturer key number/ type code number	0603 / BTA 00358		
Emission standard	EURO6;WLTP;DG;PI/CI; M, N1 I	fine dust sticker	
Permitted total weight	2,345 kg	Empty weight	

Tyres

Mounted tyres				
#	Tyre size	Type of tyre	Manufacturer	Tread depth
1)	205/55 R16 94H	Summer tyres on Light alloy	Hankook	6mm / 6mm
2)	205/55 R16 94H	Summer tyres on Light alloy	Hankook	6mm / 6mm
Additional tyres				
#	Tyre size	Type of tyre	Manufacturer	Tread depth
1)	205/55 R16 94H	Winter tyres on Light alloy	Pirelli	6mm / 6mm
2)	205/55 R16 94H	Winter tyres on Light alloy	Pirelli	6mm / 6mm
Replacement				
Typ	Tyre size	Type of tyre	Manufacturer	Tread depth
E	205/55 R16 94H	Summer tyres on Steel	Hankook	7 mm

Legend: Tread depth information for the left tire is listed first, for the right tire it is listed second on the axle in the direction of travel.



Equipment

Standard equipment

- Storage and stowage boxes
- Airbag: Driver and passenger side
- Electrically adjustable and heated exterior mirrors
- Exterior mirror housings, door handles and sliding door cover painted in body color
- Floor coverings, carpeting in the driver's cab and passenger compartment
- Decorative inlays "Checker Plate Titanium"
- ESP Electronic Stability Program with Brake Assist
- Windows: Fixed side windows with heat-insulating glazing in the cargo/passenger compartment, front and rear
- Electric windows, front
- Cruise control system including speed limiter
- Halogen twin headlights with LED daytime running lights
- Interior lighting: Interior lighting in the driver's cab
- Folding tables on the backrests of the seats in the first row.
- Headrests (7)
- Steering wheel: Leather steering wheel
- Light and Visibility Package
- Makeup mirror: Makeup mirror on the left, with cover
- center armrests
- Multi-collision brake
- Package: Chrome Package I
- Upholstery: Cloth
- Wheels/Tires: "Bendigo" alloy wheels 6 J x 16
- Wheels/Tires: Tire pressure monitoring system
- Sliding door, on the right in the passenger/cargo area
- lettering on the rear
- Speed-sensitive power steering (Servotronic)
- Seats in the driver's cab: Front seats are height-adjustable
- Seats in the passenger/cargo area: 3rd row of seats, 2-seater bench (foldable)
- Start-stop system
- Power outlets: 12-volt socket in the cargo area
- Inside step, in the driver's cab and passenger compartment
- Electronic immobilizer
- Airbag, side and head airbags for driver and front passenger
- Exterior mirrors: Car exterior mirrors, left aspherical, right convex
- Hill Start Assist
- third brake light
- Roof rails, black
- Tachometer
- Driver assistance systems: Front Assist area monitoring system with City Emergency Braking function
- Windows: Front side windows in heat-insulating glass
- Luggage compartment cover, foldable and removable
- Transmission: 6-speed transmission
- Tailgate with heated rear window and rear window wiper
- Interior trim: Comfort headliner in the driver's cab and passenger compartment
- Leather part circumference
- Steering column adjustable in height and length
- Air vent, black textured with heat-sealed ring
- Makeup mirror: Makeup mirror on the right, with cover
- Multifunction display
- Fog light
- Particulate filter: Soot particle filter for diesel engines
- Wheels/Tires: 205/55 R 16 94 H xl, optimized for low rolling resistance
- Sliding door, left side in the passenger/cargo area
- Locking system: 2 remote control keys for the central locking system.
- Seat belts: Three-point automatic seat belts
- Seats in the passenger/cargo compartment: 2nd row of seats, 3-seater bench
- Seats: Comfort seat, front left and right
- Dust and pollen filter
- Bumpers in body color
- First aid kit, warning triangle and high-visibility vest
- Lashing points: 6 lashing points for securing cargo
- Central locking with remote control and interior operation



Extra equipment

- Adaptive Cruise Control (ACC) up to 160 km/h, including speed limiter
- Car-Net "Guide & Inform", 3-year term (Car-Net Guide & Inform Basic and WLAN interface)
- Exterior mirrors, electrically adjustable, heated and folding
- Multimedia systems: App-Connect and second USB interface (Two USB interfaces (also iPod/iPhone/iPad compatible) and AUX-IN multimedia socket - center console with center armrest and 3 cup holders (2 front and 1 rear) - Car-Net App-Connect - Apple CarPlay, Android Auto)
- Paint finish: Metallic
- Park Assist and ParkPilot in the front and rear areas
- Radio navigation system "Discover Media" with 6.33" touchscreen (6 speakers - Electronic voice amplification - USB interface and multimedia socket AUX-IN - Navigation system "Discover Media" (integrated data carrier) - Radio navigation system - Mobile phone interface)
- Steering wheel: Multifunction leather steering wheel (3 spokes)
- "Premium" multifunction display with multicolor screen and fatigue detection
- Driver assistance systems: Front Assist area monitoring system with City Emergency Braking function (for ACC adaptive cruise control up to 160 km/h)
- Floor coverings, rubber flooring in the passenger/cargo area
- Package: Plus (Comfortline) (Digital radio reception (DAB+) - Allergen filter - Luggage net in the passenger/cargo area (2 attachment points for Caddy or 3 attachment points for Caddy Maxi) - Heated seats for driver and passenger seats, separately adjustable - Heated laminated windshield - "Air Care Climatronic" air conditioning with 2-zone temperature control and air purification function)
- Wheels/Tires: Steel spare wheel with driving tires including jack
- Winter package Caddy 1 (Seat heating for seats in the driver's cab, left and right, separately adjustable - Washer fluid level indicator - Headlight cleaning system - Electric auxiliary air heater (PTC) - Heated windshield washer nozzles, front)

Brief expert findings

Documents submitted	At the time of the inspection, the vehicle registration certificate Part 2 (title) was available, but the vehicle registration certificate Part 1 (document) was not. (Copy)
VIN comparison	The vehicle identification number (VIN) was read from the vehicle and its conformity with the submitted documents was confirmed by the undersigned during the inspection.
Inspection	The inspection conditions were sufficient for the assessment of the vehicle. No lifting equipment or pit was available for inspecting the vehicle. Therefore, inspection of the vehicle's underside was only possible to a limited extent.
Test drive	No test drive/shunting maneuver was carried out during the inspection of the vehicle.
Engine function test	An engine test run was performed.

Value reducing factors

No.	Component group	Description
1	Rear bumper	Rear bumper - Scratched - Paint
2	Vehicle glazing	Windscreen (Mit Rissbildung im Fahrersichtfeld) - Stone chips - Replace

Wear and tear

No.	Component group	Description
1	Front bumper	Front bumper - Stone chips - No deduction
2	Bonnet	Bonnet - Stone chips - No deduction
3	Interior	Interior - Soiled - No deduction

The vehicle shows signs of wear and tear commensurate with its age and use.



Order/Scope of Order

An order was placed to prepare a sales report for the described vehicle. This report includes the following:

- Description of key vehicle information
- Documentation of equipment features
(Delivery by third-party service providers)
- Documentation of damage, defects, missing parts
- Documentation of prior damage, unrepaired prior damage, repainting
- A brief visual or functional inspection of the equipment details, if possible.
(Functional testing of driver assistance systems is not included in the scope of services!)
- a photographic documentation of the vehicle

Basis for the order

This product is based on the guidelines for vehicle returns and valuations published by Alphabet Fleet GmbH. The expert makes the specific findings in each individual case objectively, within the framework of the prescribed standards, based on their own expertise.

The vehicle inspection takes place in a fully assembled, unassembled state.

Damage or defects that can only be detected during disassembly/diagnostic work or through further investigation remain within the realm of prognostic risk. An increased risk exists due to concealed defects caused by fraudulent misrepresentation and which were not identifiable by the expert.

Damage or defects resulting from normal use or wear and tear of the vehicle will be accepted in accordance with the applicable standard.

There was no explicit identification or monetary consideration of the expected features within the product.

Features which, in their nature and extent, slightly exceed normal use but do not constitute unacceptable damage, will be documented and indicated as signs of wear, if applicable.

Damage or defects that, according to the applicable standard, can no longer be attributed to normal use or wear and tear are listed under "Value Reducing Factors" in the product description.

Depending on the product specification, a monetary ID can be provided. If this takes place, the costs can be 100% d or pro rata depending on the vehicle's age and mileage.

Previous damages

No apparent prior damage that had been repaired could be found on the vehicle.

Comments

- Die Unterbodenbesichtigung war nur ebenerdig & eingeschränkt möglich. Mehrkosten möglich.
- Winterradsatz ist kein Bestandteil des Auslieferungsumfangs.



Figure 1: Diagonal front (left)



Figure 2: Diagonal front (right)



Figure 3: Diagonal rear (left)



Figure 4: Diagonal rear (right)



Figure 5: Interior - front



Figure 6: Interior - rear



Figure 7: Instrument cluster



Figure 8: Instrument panel



Figure 9: Interior 360° view



Figure 10: Cargo area

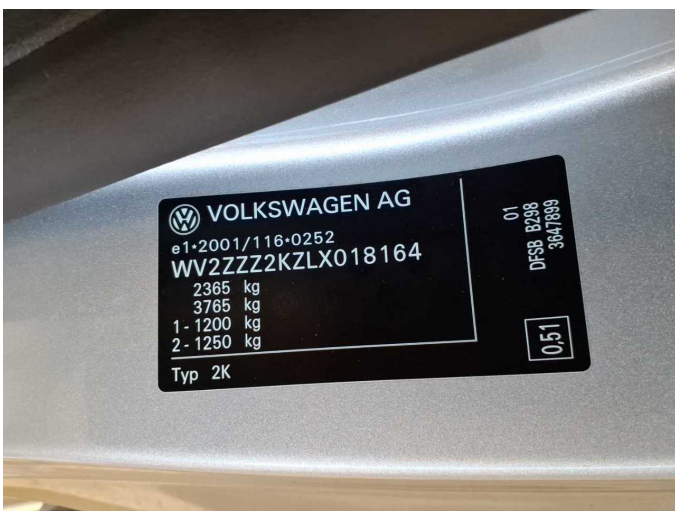


Figure 11: VIN



Figure 12: Mounted tyres



Figure 13: Documents



Figure 14: Documents

Fz.-Klasse: M1/A			
HSN: 0603			
TSN / VSN: BTA / C			
Kilometerstand: 75042			
letzte HU: 12.22			
(8) Nächste HU: 01.27			
Berechn. Druck (bar)	Summe der Bremskräfte Σ FB Ist (daN)	Erforderliche Bremskräfte Σ FB Min (daN)	Bremskraftanteil Ist (%)
-	487	324	78.9
-	345	271	21.1
-	348		

Figure 15: Documents



Figure 16: Additional tyres

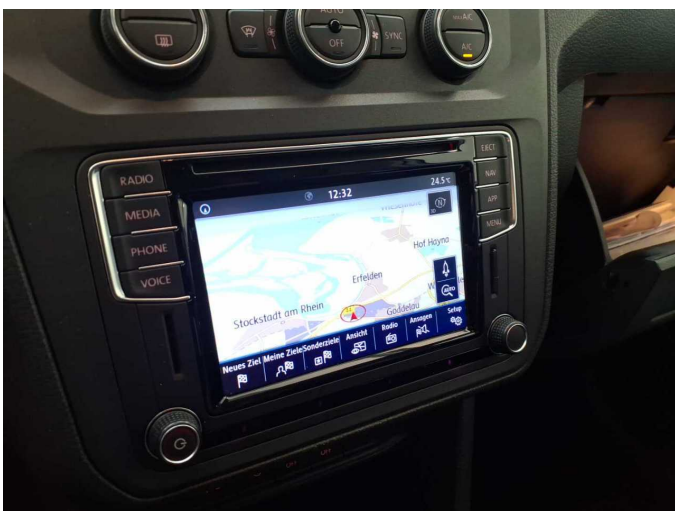


Figure 17: Navigation



Figure 18: Misc.



Figure 19: Misc.



Figure 20: Misc.

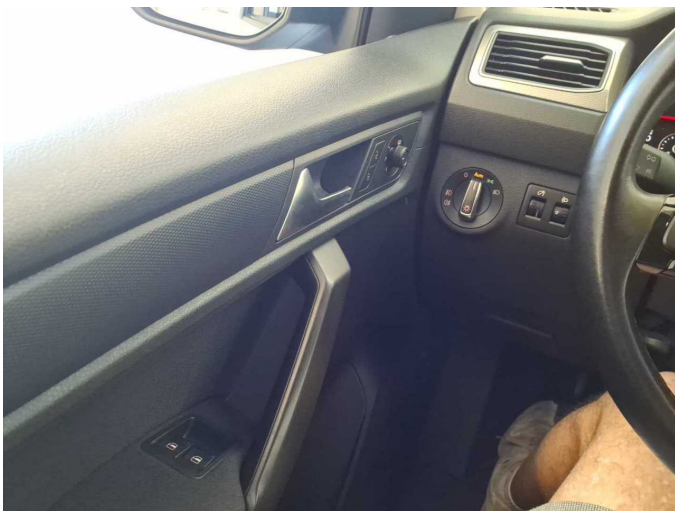


Figure 21: Misc.

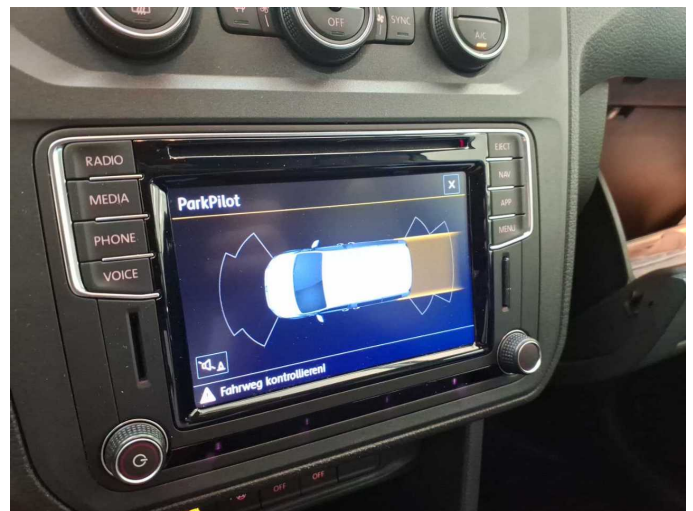


Figure 22: Misc.

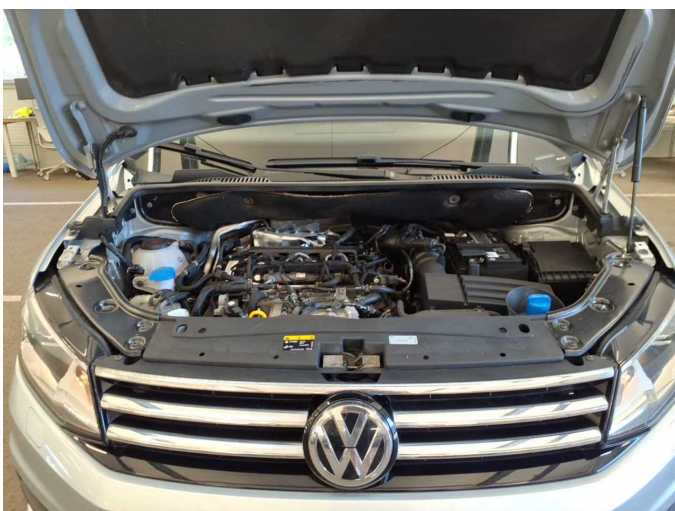


Figure 23: Misc.

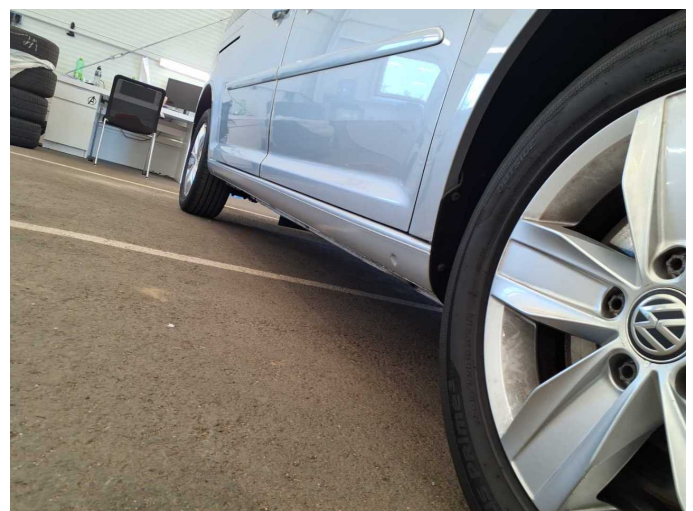


Figure 24: Misc.



Figure 25: Misc.



Figure 26: Misc.

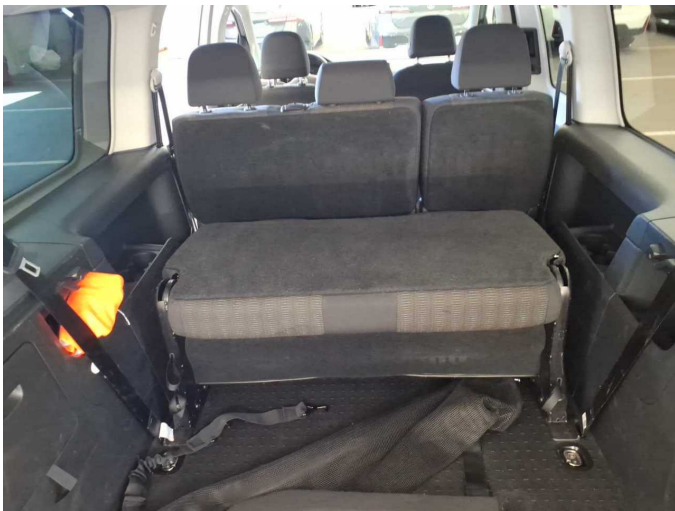


Figure 27: Misc.



Figure 28: Misc.



Damage 1: Rear bumper: Rear bumper - Scratched - Paint



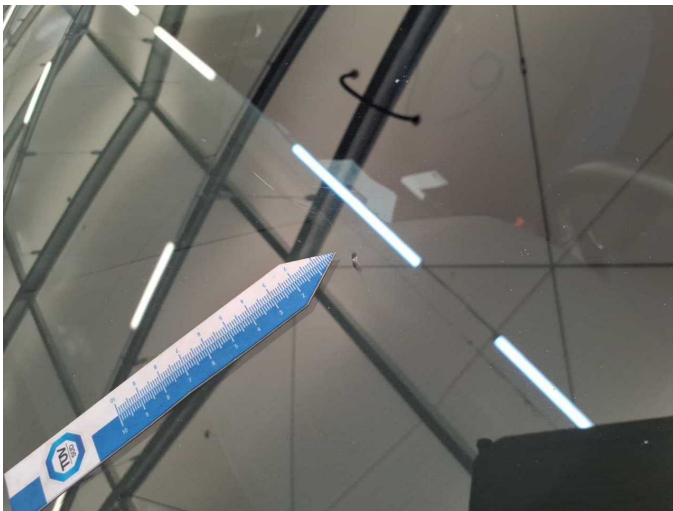
Damage 1: Rear bumper: Rear bumper - Scratched - Paint



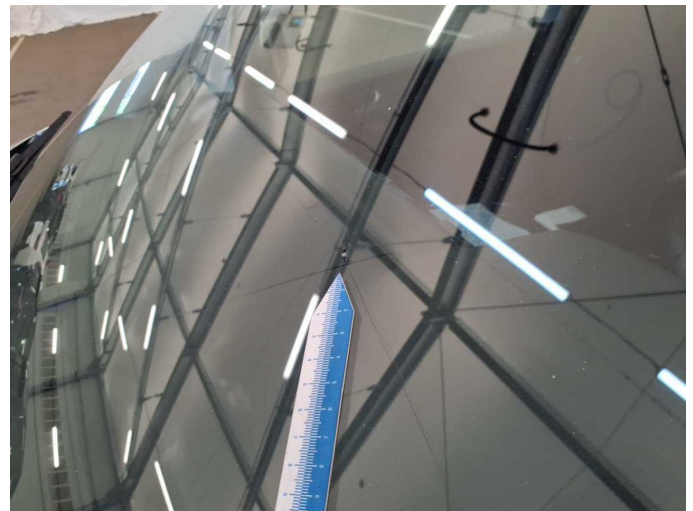
Damage 1: Rear bumper: Rear bumper - Scratched - Paint



Damage 2: Vehicle glazing: Windscreen (Mit Rissbildung im Fahrersichtfeld) - Stone chips - Replace



Damage 2: Vehicle glazing: Windscreen (Mit Rissbildung im Fahrersichtfeld) - Stone chips - Replace



Damage 2: Vehicle glazing: Windscreen (Mit Rissbildung im Fahrersichtfeld) - Stone chips - Replace



Wartungshistorie

(gemäß Auftraggeber Informationen)

Fahrgestellnummer: WV2ZZZ2KZLX018164

Hersteller / Modell: VOLKSWAGEN VW Caddy 2.0 TDI (7-Si.) Maxi Comfortline

Datum	KM-Stand	Beschreibung
10.02.2026	90.931	Batterie ern; Regelwartungsdienst; Systemtest/Eigendiagnose
12.11.2025	89.578	Kraftstofffilter ern; Systemtest/Eigendiagnose
27.02.2025	75.041	AU; Bremsflüssigkeit; Bremsflüssigkeit ern; Motoröl b. Wartung; Ölfilter ern; Regelwartungsdienst; Wartung Sonstiges
06.12.2023	55.274	Luffiltereinsatz ern; Regelwartungsdienst
30.08.2023	51.191	Motoröl b. Wartung; Ölfilter ern; Ölwechsel; Wartung Sonstiges
05.12.2022	40.024	AU; Bremsflüssigkeit ern; Regelwartungsdienst
29.11.2021	21.451	Motoröl b. Wartung; Regelwartungsdienst