

Expertise

Protocol number: 46296430
Order No. / Reference: 26580458-1
Inspection date: 26 Jun 2026

Manufacturer: Volkswagen

Model: ID.4 Performance Upgrade Pure

VIN: WVGZZZE2ZPE039499



Vehicle details

Manufacturer / Type / Model / Equipment

Volkswagen ID.4 Performance Upgrade Pure

Vehicle Identification number WVGZZZE2ZPE039499

Mileage (Read) 67,002 km

First registration 16 May 2023

Number of holders 1

Power / Engine displacement 70 kw / 0 ccm

Fuel type / Cylinder Electric / 0

Gearbox / Number of gears Direct drive / 1

Type of drive Rear drive

Type of vehicle Station wagon

Colour / colour code Grey University

Doors / Seats 5 / 5

Upholstery type Cloth / leather combination

Colour of upholstery Grey-Anthracite



Vehicle details

Maintenance booklet / proof	Non-existent	Next maintenance in	323 Tag(e)
Key is / should be	2 / 2	FZG documents	ZB#2 (B) was available (copy), ZB#1 (S) was not available.
		Letter No.	GS512906
Previous damage / Accident	None detectable	Repainting	None detectable
Inspection conditions	sufficient	Lifting equipment / pit	No
Test drive	Not performed	Engine function test	Performed
Manufacturer key number/ type code number	0603 / CLO 00010		
Emission standard	2017/1151;WLTP;reine Elektrofz	fine dust sticker	
Permitted total weight	2,480 kg	Empty weight	

Tyres

Mounted tyres

#	Tyre size	Type of tyre	Manufacturer	Tread depth
1)	235/55 R19 101T	All-season tyres on Light alloy	Bridgestone	7mm / 7mm
2)	235/55 R19 101T	All-season tyres on Light alloy	Bridgestone	6mm / 6mm

Legend: Tread depth information for the left tire is listed first, for the right tire it is listed second on the axle in the direction of travel.



Equipment

Standard equipment

- 2 USB-C ports on the front
- Airbag for driver and front passenger, with front passenger airbag deactivation
- Ambient lighting, 10 colors
- Electrically adjustable, folding and heated exterior mirrors
- Car2X
- e-Sound (artificially generated engine noise to inform other road users about the approach of the e-vehicle)
- ESP Electronic Stability Program (incl. ABS Anti-lock Braking System)
- Speed limiter (in conjunction with online services)
- Transmission: 1-speed automatic
- Back window, heater
- rear window wiper
- Interior mirror automatically dimming
- ISOFIX mounting points for child seats (mounting points for child seats on the outer rear seats and on the front passenger seat, i-Size compatible)
- Paint finish: Solid
- Charging: 50 kW DC charging power (direct current)
- LED headlights with automatic headlight control
- Makeup mirrors in the sun visors
- Fatigue detection
- Emergency braking assistant "Front Assist" with pedestrian and cyclist detection
- Emergency call service (no registration required, service is activated upon delivery)
- Upholstery: Seat center panels of the front seats and the outer rear seats in "Matrix" fabric
- Radio "Ready 2 Discover" (Digital radio reception DAB+ - Diversity antenna for FM reception)
- Radio accessories: 6 + 1 speakers
- Tire pressure monitoring system
- LED taillights
- Keyless Start system (without safe locking)
- Seat belts: Three-point automatic seat belts at the front with height adjustment and belt tensioner (3 three-point automatic seat belts at the rear - warning tone and light for unfastened seat belts at the front and rear)
- Voice control
- Lane keeping assistant "Lane Assist"
- Ambient lighting with logo projection
- Traffic sign recognition
- Green thermal insulation glazing, sides and rear
- Turning brake function and evasive steering support
- Airbags: Front and rear head airbags, front side airbags, center airbag
- App-Connect Wireless for Apple CarPlay and Android Auto
- third brake light
- black roof rails
- Parking aid (warning signals for obstacles in the front and rear area)
- Driving profile selection (possibility to set different vehicle settings: Comfort (only in conjunction with Adaptive Chassis Control DCC), Normal, Sport, Eco, Individual - adjustable vehicle systems are: engine, Adaptive Chassis Control DCC, DSG, steering, start-stop system, cornering lights and "Dynamic Light Assist", Adaptive Cruise Control ACC, air conditioning)
- "Climatronic" air conditioning system (active combination filter - stationary air conditioning)
- Front and rear headrests (5)
- Mode 3 Type 2 charging cable, 16 A
- Charging: 7.2 kW AC charging power (alternating current)
- Steering wheel: Multifunction steering wheel with touch controls
- Navigation system "Discover Pro" (23.4 cm touchscreen - map with 2D display - traffic sign display - points of interest - App-Connect Wireless - voice control)
- Package: Infotainment package (Navigation system "Discover Pro": 23.4 cm touchscreen, map with 2D display, traffic sign display, points of interest, App-Connect Wireless, voice control - "Comfort" telephone interface with inductive charging function including hands-free system, Bluetooth audio, external antenna connection with LTE support)
- Wheels: Steel wheels (4) 8 J x 18 (tires 235/60 R 18 - wheel covers)
- Electromechanical power steering (speed-dependent control)
- Seats: Armrest for front seats
- Seats: Driver's seat height adjustable
- Seats: Rear bench seat undivided, backrest asymmetrically split and foldable
- Telephone interface
- First aid kit, warning triangle and high-visibility vest
- Electronic immobilizer
- Central locking including remote control



Extra equipment

- Package: Comfort Package "Plus" (2 USB-C ports in the front, 2 USB-C charging ports on the rear center console - Windscreen in laminated safety glass, wirelessly heated and infrared-reflecting, noise-reducing - Luggage net - Luggage compartment floor - "Air Care Climatronic" air conditioning with active combination filter, stationary climate control and 3-zone temperature control - Variable center console with interchangeable inserts for cup holders and storage compartments - Cargo net partition - Rain sensor - Automatically heated front windscreen washers - Heated front seats)
- Package: Design package (3D LED taillights with dynamic turn signals - Dynamic Light Assist high beam control for LED matrix headlights - IQ.LIGHT - LED matrix headlights with automatic headlight control, bad weather light, welcome function - illuminated strip between the headlights - tinted rear side windows and rear window)
- Exterior Style "Silver"
- Package: Assistance package (Anti-theft alarm system with interior monitoring, backup horn and tow-away protection - Parking assistant "Park Assist Plus" incl. parking aid - Proactive occupant protection system in conjunction with "Front Assist" - Rear view camera - Keyless locking and starting system "Keyless Access", with safe locking - Illuminated door handle recesses)
- Textile floor mats front and rear
- Wheels: Alloy wheels (4) "Hamar" 8 J x 19 in Dark Graphite polished finish (Airstop all-season tires 235/55 R 19 - Wheel locks with enhanced theft protection)

Brief expert findings

Documents submitted	At the time of the inspection, the vehicle registration certificate Part 2 (title) was available, but the vehicle registration certificate Part 1 (document) was not. (Copy)
VIN comparison	The vehicle identification number (VIN) was read from the vehicle and its conformity with the submitted documents was confirmed by the undersigned during the inspection.
Inspection	The inspection conditions were sufficient for the assessment of the vehicle. No lifting equipment or pit was available for inspecting the vehicle. Therefore, inspection of the vehicle's underside was only possible to a limited extent.
Test drive	No test drive/shunting maneuver was carried out during the inspection of the vehicle.
Engine function test	An engine test run was performed.

Value reducing factors

No.	Component group	Description
1	Bonnet	Bonnet - dent(s) - Smooth repair work
2	Door - front right side	Door edge - Scratch(es) - Smart repair

Wear and tear

No.	Component group	Description
1	Vehicle glazing	Windscreen - Stone chips - No deduction
2	Front bumper	Front bumper - Stone chips - No deduction
3	Rear bumper	Rear bumper - Scratch(es) - No deduction

The vehicle shows signs of wear and tear commensurate with its age and use.



Order/Scope of Order

An order was placed to prepare a sales report for the described vehicle. This report includes the following:

- Description of key vehicle information
- Documentation of equipment features
(Delivery by third-party service providers)
- Documentation of damage, defects, missing parts
- Documentation of prior damage, unrepaired prior damage, repainting
- A brief visual or functional inspection of the equipment details, if possible.
(Functional testing of driver assistance systems is not included in the scope of services!)
- a photographic documentation of the vehicle

Basis for the order

This product is based on the guidelines for vehicle returns and valuations published by Alphabet Fleet GmbH. The expert makes the specific findings in each individual case objectively, within the framework of the prescribed standards, based on their own expertise.

The vehicle inspection takes place in a fully assembled, unassembled state.

Damage or defects that can only be detected during disassembly/diagnostic work or through further investigation remain within the realm of prognostic risk. An increased risk exists due to concealed defects caused by fraudulent misrepresentation and which were not identifiable by the expert.

Damage or defects resulting from normal use or wear and tear of the vehicle will be accepted in accordance with the applicable standard.

There was no explicit identification or monetary consideration of the expected features within the product.

Features which, in their nature and extent, slightly exceed normal use but do not constitute unacceptable damage, will be documented and indicated as signs of wear, if applicable.

Damage or defects that, according to the applicable standard, can no longer be attributed to normal use or wear and tear are listed under "Value Reducing Factors" in the product description.

Depending on the product specification, a monetary ID can be provided. If this takes place, the costs can be 100% or pro rata depending on the vehicle's age and mileage.

Previous damages

No apparent prior damage that had been repaired could be found on the vehicle.

Comments

Die Wartungshistorie ist nicht vorhanden und kann somit nicht auf Vollständigkeit geprüft werden.



Figure 1: Diagonal front (left)



Figure 2: Diagonal front (right)



Figure 3: Diagonal rear (left)



Figure 4: Diagonal rear (right)



Figure 5: Interior - front



Figure 6: Interior - rear



Figure 7: Instrument cluster



Figure 8: Instrument panel



Figure 9: Interior 360° view



Figure 10: Cargo area

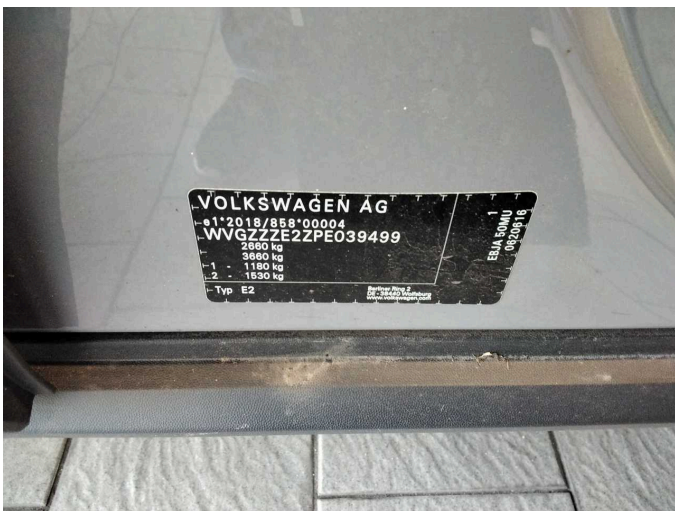


Figure 11: VIN



Figure 12: Mounted tyres

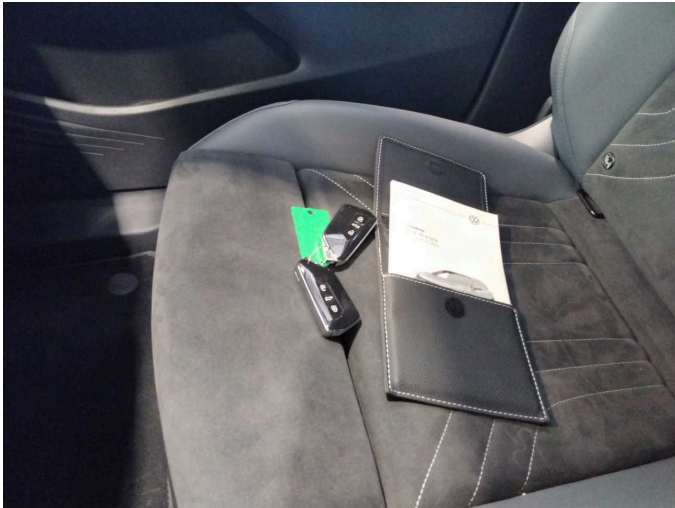


Figure 13: Documents

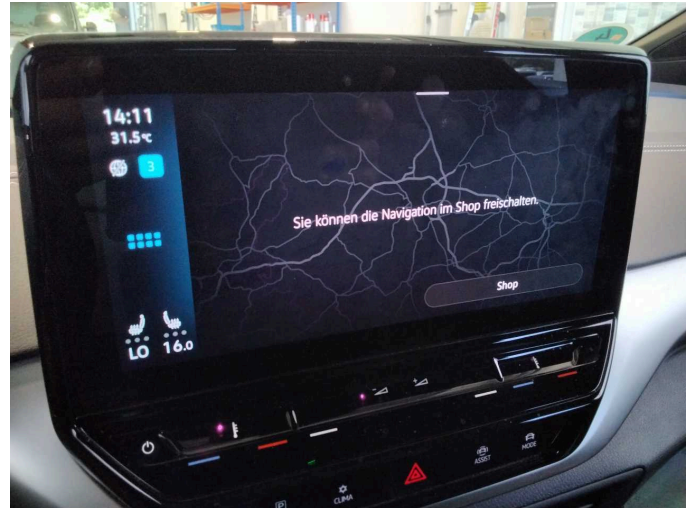


Figure 14: Navigation



Figure 15: Misc.



Figure 16: Misc.



Figure 17: Misc.



Figure 18: Misc.



Figure 19: Misc.



Figure 20: Misc.



Figure 21: Misc.



Figure 22: Misc.



Figure 23: Misc.

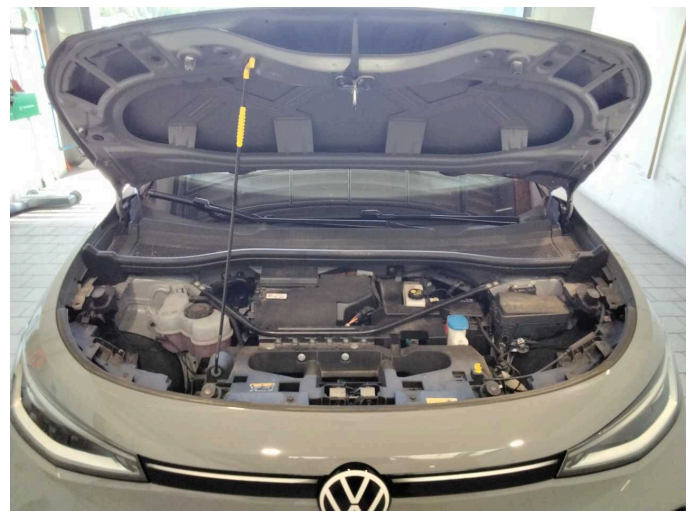


Figure 24: Misc.



Figure 25: Misc.



Figure 26: Misc.

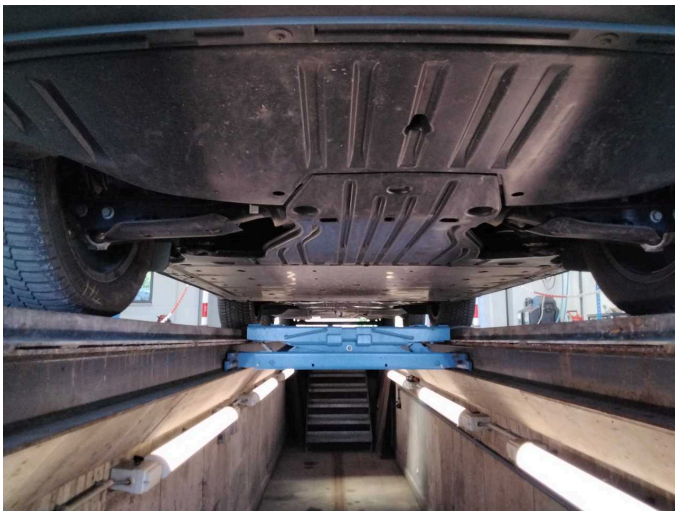


Figure 27: Misc.



Figure 28: Misc.



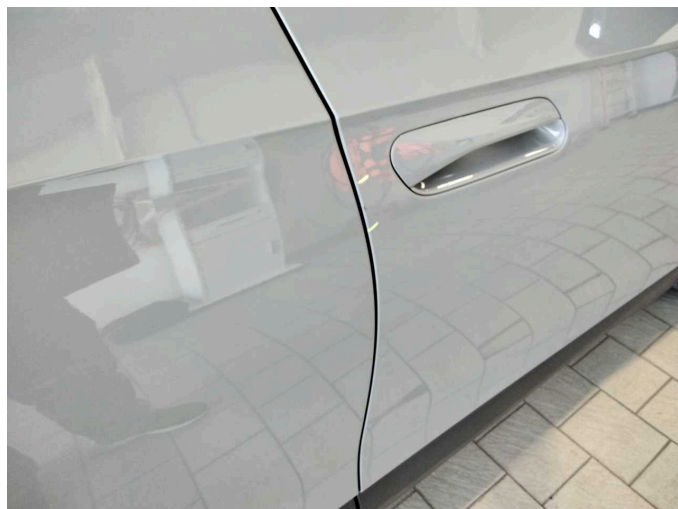
Damage 1: Bonnet: Bonnet - dent(s) - Smooth repair work



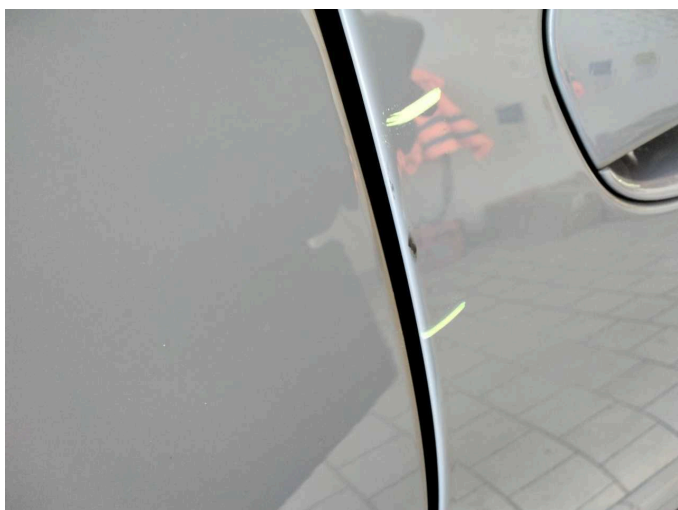
Damage 1: Bonnet: Bonnet - dent(s) - Smooth repair work



Damage 1: Bonnet: Bonnet - dent(s) - Smooth repair work



Damage 2: Door - front right side: Door edge - Scratch(es) - Smart repair



Damage 2: Door - front right side: Door edge - Scratch(es) - Smart repair