

Expertise

Protocol number: 46296033
Order No. / Reference: 26649744
Inspection date: 30 Jun 2026

Manufacturer: Mercedes-Benz

Model: GLC 300 de 4Matic 9G-TRONIC

VIN: W1N2539111G057029



Vehicle details

Manufacturer / Type / Model / Equipment

Mercedes-Benz GLC 300 de 4Matic 9G-TRONIC

Vehicle Identification number	W1N2539111G057029
Mileage (Read)	112,972 km
First registration	23 Mar 2022
Number of holders	1
Next periodical technical inspection	04/2027 (Report not on hand)

Power / Engine displacement	143 kw / 1,950 ccm
Fuel type / Cylinder	Hybr.D/E ext.aufll / 4
Gearbox / Number of gears	Automatic / 9
Type of drive	All-wheel drive
Type of vehicle	SUV

Colour / colour code	HIGHTECHSILBER METALLIC-LACKE
Doors / Seats	5 / 5
Upholstery type	Cloth
Colour of upholstery	Black



Vehicle details

Maintenance booklet / proof	digital proof / complete	Next maintenance in	170 Tag(e)
Last service on / at	12/2025 at 102,836 km		
Key is / should be	2 / 2	FZG documents	ZB#2 (B) was available (copy), ZB#1 (S) was not available.
		Letter No.	GF802870
Previous damage / Accident	Detectable	Repainting	None detectable
Inspection conditions	sufficient	Lifting equipment / pit	yes
Test drive	Not performed	Engine function test	Performed
Manufacturer key number/ type code number	2222 / ASV 00057		
Emission standard	EURO6;WLTP;AP;PI/CI; M, N1 I	fine dust sticker	
Permitted total weight	2,650 kg	Empty weight	

Tyres

Mounted tyres

#	Tyre size	Type of tyre	Manufacturer	Tread depth
1)	235/60 R18 103V	Summer tyres on Light alloy	Bridgestone	3mm / 3mm
2)	235/60 R18 103V	Summer tyres on Light alloy	Bridgestone	4mm / 4mm

Additional tyres

#	Tyre size	Type of tyre	Manufacturer	Tread depth
1)	235/60 R18 103H	Winter tyres on Light alloy	Pirelli	4mm / 4mm
2)	235/60 R18 103H	Winter tyres on Light alloy	Pirelli	7mm / 7mm

Legend: Tread depth information for the left tire is listed first, for the right tire it is listed second on the axle in the direction of travel.

TÜV SÜD Auto Partner GmbH
Wiesenring 2
04159 Leipzig

Inspection location
Hartmann Fleet Professionals GmbH
Leerenstraße 25
29683 Bad Fallingbommel



Equipment



Standard equipment

- Airbag for driver and front passenger
- Airbag: Sidebag for driver and front passenger (combined thorax/pelvisbag)
- Acoustic environmental protection (To ensure that your vehicle does not become a danger to pedestrians and cyclists even when driving purely electrically and almost silently, the acoustic environmental protection generates a Mercedes-Benz specific sound outside the vehicle up to a speed of 30 km/h.)
- Anti-lock braking system (ABS)
- Automatic passenger airbag deactivation
- Heated exterior mirrors on the left and right, electrically adjustable from the inside (with aspherically curved mirror glass and integrated turn signal light)
- Roof rails in polished aluminum
- Diesel particulate filter
- Tachometer
- DYNAMIC SELECT
- Electronic Stability Program (ESP)
- Chassis with higher ground clearance (In this chassis variant, the body is raised by 20 mm)
- electric parking brake
- Transmission: 9G-TRONIC
- rear window wiper
- KEYLESS-GO start function
- Climate: THERMATIC automatic climate control with 2 climate zones (The THERMATIC automatic climate control with 2 climate zones offers individual climate comfort in the front seats: driver and front passenger can set the temperature separately for their side. Thanks to the automatic climate control and the sensitive sensor system, this is kept constant without any manual adjustments.)
- Headrests adjustable in 5 ways (4-way for driver and front passenger, and 2-way in the rear)
- Charging cable for household socket, 5m, smooth (This charging cable, also called Mode 2 cable, allows you to charge the vehicle battery at the household socket with up to 2.3 kW (230 V, 1-phase, 10 A) and fits sockets of type E/F CEE 7/7.)
- Steering column mechanically adjustable in height and length
- Mercedes-Benz emergency call system
- Package: Storage (map pockets on the back of the front seats - net on the load floor - folding box under the load floor - 12V socket in the load compartment on the left - cargo bars - two USB-C ports in the rear)
- Package: Chrome (radiator grille with integrated Mercedes star and 2 louvers in matte iridium silver with chrome inserts, visual underguard front and rear in chrome, roof rails in polished aluminum, surface-mounted, beltline trim strip in polished aluminum, window surrounds in polished aluminum, exhaust system with 2 visible tailpipe trims in stainless steel, permanently integrated into the bumper)
- Radio accessories: Digital radio
- Tire pressure monitoring system (TPMS)
- Airbag: Kneebag for driver
- Airbag: Windowbags
- Active Brake Assist (can help avoid rear-end collisions with vehicles ahead, whether moving or stationary, as well as collisions with moving pedestrians and cyclists. In addition to distance and collision warnings, it primarily offers brake boosting – up to and including autonomous emergency braking.)
- 4MATIC all-wheel drive
- ATTENTION ASSIST (can detect typical signs of fatigue through driver behavior and warn the driver of increasing fatigue or inattentiveness)
- On-board computer
- Brake system with larger brake discs on the front axle (drilled front brake discs and front brake calipers with Mercedes-Benz lettering).
- Third brake light in LED technology
- EASY-Pack cargo cover (removable)
- Driving light assistant
- Electric window regulator, 4-way (with comfort operation and anti-pinch protection)
- Velour floor mats in interior color
- Heated rear window (with timer)
- Interior headliner fabric crystal grey (Only in combination with upholstery in black (001, 101, 221, 301, 651))
- Remote trunk lid release
- Instrument cluster with 2 tubular round instruments, 13.97 cm (5.5") multifunction display
- Communication module (LTE) for using Mercedes me connect services (The communication module (LTE) offers you a clear increase in comfort and safety. It constantly connects the vehicle to the internet – so that you can use helpful services such as the Live Traffic Information from Mercedes me connect. Two mobile antennas and an LTE-enabled SIM card ensure a fast connection.)
- Charging system: AC on-board charger (AC charging)
- LED High Performance headlights (with integrated daytime running lights, LED taillights)
- Steering wheel: Multifunction sports steering wheel in 3-spoke design in black leather (with black decorative stitching and two-piece front trim in silver chrome)
- Navigation accessories: Extended MBUX functions (personalization (profiles) and prediction functions - LINGUATRONIC with natural language understanding - activation via "Hey Mercedes" - Wi-Fi hotspot - internet radio)
- Package: Interior lighting (More light, more atmosphere, better orientation: The interior lighting package provides more comprehensive direct and indirect lighting. The additional light elements create a pleasant atmosphere and make operation easier.)
- Upholstery: Aberdeen fabric, black
- Radio: MBUX multimedia system



- Remote Services Plus (The Remote Services Plus package transforms mobility into a new experience, offering greater comfort and safety. Status queries provide information about the remaining range. You can remotely control certain functions and locate your vehicle. Services such as maintenance management coordinate service appointments, saving you valuable time.)
- Windscreen wipers with rain sensor
- Seats: Folding rear seat backrests (40/20/40 split including Easy Pack Quickfold and center armrest with double cupholder and storage compartment)
- Cruise control (Drive relaxed and fuel-efficiently, especially on longer journeys. Simply select your desired speed and your vehicle will regulate it. In addition to the cruising speed, the speed limiter helps you maintain a maximum speed. This increases road safety and protects you from expensive speeding tickets.)
- Decorative elements: Piano lacquer look in high-gloss black

Extra equipment

- Towbar with ESP trailer stabilization (fully electrically foldable and retractable)
- Head-up display
- Paint finish: Metallic
- Charging cable for wallboxes and public charging stations, 5m, smooth
- Navigation accessories: Pre-installation for Live Traffic Information
- Package: Advanced Light (LED High Performance headlights and adaptive LED taillights, Adaptive Highbeam Assist)
- Package: Comfort
- Package: OFF-ROAD Exterior (lower part of the front bumper silver-chromed, radiator grille with chrome trim strips, 45.7 cm (18") 5-spoke alloy wheels painted tremolite grey and polished with 235/60 R 18 tires on 8 J x 18 ET 38 rims, suspension with increased ground clearance, front bumper with increased approach angle)
- Package: Mirrors (Electrically folding exterior mirrors, lowering right exterior mirror, automatic dimming function)
- Remote and Charging Services Plus
- Wheels: Winter complete wheels M+S 4-way 45.7 cm (18") light alloy wheels in 5-twin-spoke design
- Wheels: Complete winter wheel sets fitted at the factory
- Partition net for luggage compartment separation (and occupant protection)
- Heat-insulating dark tinted glass all around from the B-pillar back

- Radio accessories: Touchpad (integrated into the center console, including a hand rest - single and multi-finger gestures, swiping movements and zoom gestures by spreading and pinching the fingers - recognizes handwritten characters: letters, special characters and numbers - clear haptic feedback)
- Wheels: 45.7 cm (18") alloy wheels, 4-piece set in 10-spoke design (vanadium silver painted with 235/60 R18 tires, 8 J x 18 ET 38)
- Power steering
- Seats: i-Size child restraint system on the outer rear seats
- Seats: Front seats electrically adjustable (with electric adjustment for seat height and backrest angle, as well as mechanical adjustment for longitudinal adjustment and headrests)
- High-visibility vest for drivers
- Immobiliser
- Central locking (with interior switch, automatic locking (can be deactivated) and crash sensor with emergency opening)

- EASY-Pack tailgate with electric operation for opening and closing
- KEYLESS-GO (Your KEYLESS-GO vehicle key can stay in your pocket; you don't need to take it out of your hand. Thanks to the stored access and driving authorization, the vehicle recognizes its owner. Simply grasp the door handle, open the door, get in, and drive off – KEYLESS-GO is always a convenient experience.)
- Package: Advanced Park
- Package: Business (for plug-in hybrid vehicles) (Advanced Parking Package: Active Parking Assist PARKTRONIC with reversing camera; Advanced Infotainment Package: Media display with touch operation, smartphone integration - Apple CarPlay and Android Auto, connectivity package navigation, traffic sign assist; Comfort Package: Heated seats for driver and front passenger, seat comfort package - electric and manual adjustment options for the front seats; Public Charging Package)
- Panoramic sunroof
- PRE-SAFE system (as preventive occupant protection)
- Wheels: 45.7 cm (18") alloy wheels, 4-spoke design (tremolite grey painted and polished with 235/60 R18 tires, 8 J x 18 ET 38)
- TIREFIT with tire inflation compressor
- Fully digital instrument display
- Heat and sound insulating acoustic glass (The heat and sound insulating acoustic glass for the front side windows offers you greater noise comfort.)



Brief expert findings

Documents submitted	At the time of the inspection, the vehicle registration certificate Part 2 (title) was available, but the vehicle registration certificate Part 1 (document) was not. (Copy)
VIN comparison	The vehicle identification number (VIN) was read from the vehicle and its conformity with the submitted documents was confirmed by the undersigned during the inspection.
Inspection	The inspection conditions were sufficient for the assessment of the vehicle. Lifting equipment and/or a pit were available for examining the vehicle.
Test drive	No test drive/shunting maneuver was carried out during the inspection of the vehicle.
Engine function test	An engine test run was performed.

Value reducing factors

No.	Component group	Description
1	Door - rear right side	Door - dent(s) - Smooth repair work
2	Front bumper	Front bumper - Stone chips - Smart repair
3	Side panel - rear right side	Sill - Scratch(es) - Smart repair
4	Indicator - front	Mirror - right side - Scratch(es) - Replace
5	2nd wheel set	1 tyre - Leaking - Replace
6	Rear bumper	Spoiler - Scratch(es) - Replace
7	Rear bumper	Rear bumper - Scratch(es) - Paint

Wear and tear

No.	Component group	Description
1	Instrument panel	Centre console - front - Scratch(es) - No deduction
2	Mudguard - right side	Mudguard - right side - Scratch(es) - No deduction
3	Vehicle glazing	Windscreen - Stone chips - No deduction
4	Door - front right side	Door - Scratch(es) - No deduction
5	Door - rear right side	Door - Scratch(es) - No deduction

The vehicle shows signs of wear and tear commensurate with its age and use.

Previous damages

No.	Previous damage	Extent of damage (Net)
1	Side right, Provided by user / customer, from 23 Mar 2026	724,34 €

Order/Scope of Order

An order was placed to prepare a sales report for the described vehicle. This report includes the following:

- Description of key vehicle information
- Documentation of equipment features
(*Delivery by third-party service providers*)
- Documentation of damage, defects, missing parts
- Documentation of prior damage, unrepaired prior damage, repainting
- A brief visual or functional inspection of the equipment details, if possible.
(*Functional testing of driver assistance systems is not included in the scope of services!*)
- a photographic documentation of the vehicle



Basis for the order

This product is based on the guidelines for vehicle returns and valuations published by Alphabet Fleet GmbH. The expert makes the specific findings in each individual case objectively, within the framework of the prescribed standards, based on their own expertise.

The vehicle inspection takes place in a fully assembled, unassembled state.

Damage or defects that can only be detected during disassembly/diagnostic work or through further investigation remain within the realm of prognostic risk. An increased risk exists due to concealed defects caused by fraudulent misrepresentation and which were not identifiable by the expert.

Damage or defects resulting from normal use or wear and tear of the vehicle will be accepted in accordance with the applicable standard.

There was no explicit identification or monetary consideration of the expected features within the product.

Features which, in their nature and extent, slightly exceed normal use but do not constitute unacceptable damage, will be documented and indicated as signs of wear, if applicable.

Damage or defects that, according to the applicable standard, can no longer be attributed to normal use or wear and tear are listed under "Value Reducing Factors" in the product description.

Depending on the product specification, a monetary ID can be provided. If this takes place, the costs can be 100% d or pro rata depending on the vehicle's age and mileage.

Previous damages

According to available information previous damages were repaired at the vehicle. Traces of repairs, which allow conclusions about the area of repair, were not recognizable during the inspection.



Figure 1: Diagonal front (left)



Figure 2: Diagonal front (right)



Figure 3: Diagonal rear (left)



Figure 4: Diagonal rear (right)



Figure 5: Interior - front

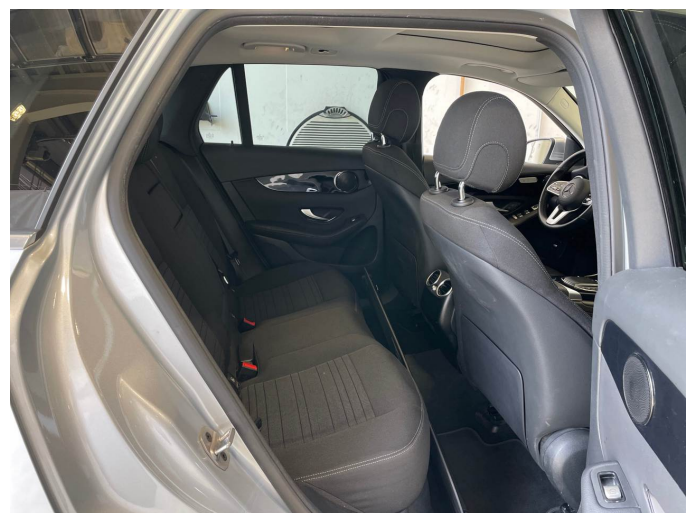


Figure 6: Interior - rear



Figure 7: Instrument panel



Figure 8: Interior 360° view



Figure 9: Cargo area



Figure 10: VIN



Figure 11: Mounted tyres

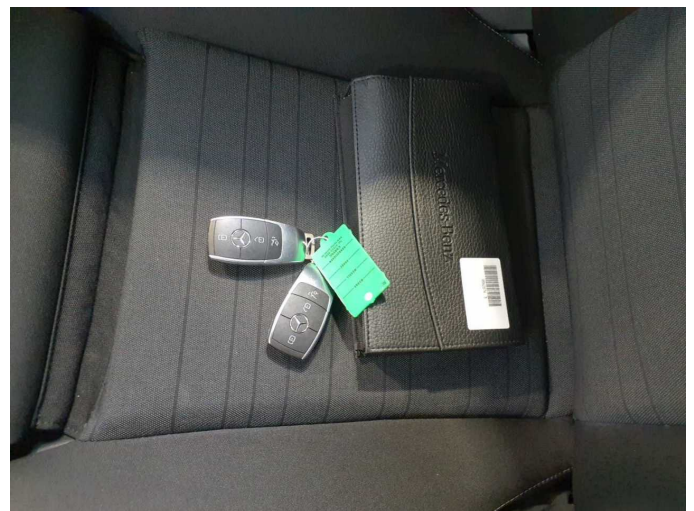


Figure 12: Documents



Figure 13: Additional tyres



Figure 14: Additional tyres



Figure 15: Navigation



Figure 16: Misc.

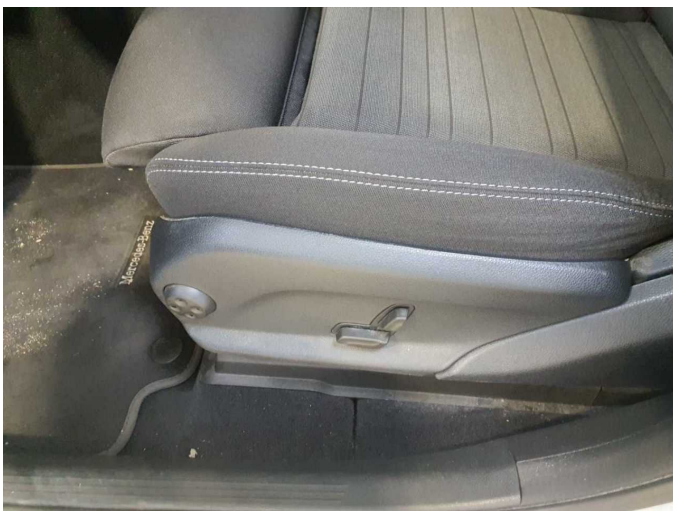


Figure 17: Misc.



Figure 18: Misc.



Figure 19: Misc.



Figure 20: Misc.

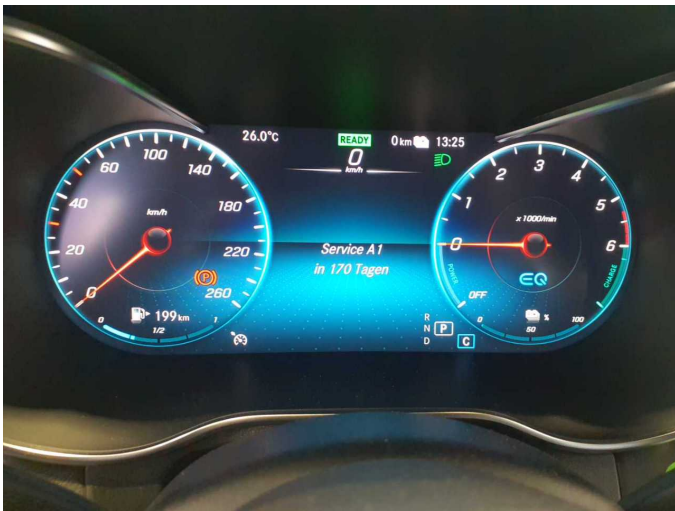


Figure 21: Misc.



Figure 22: Misc.



Figure 23: Misc.

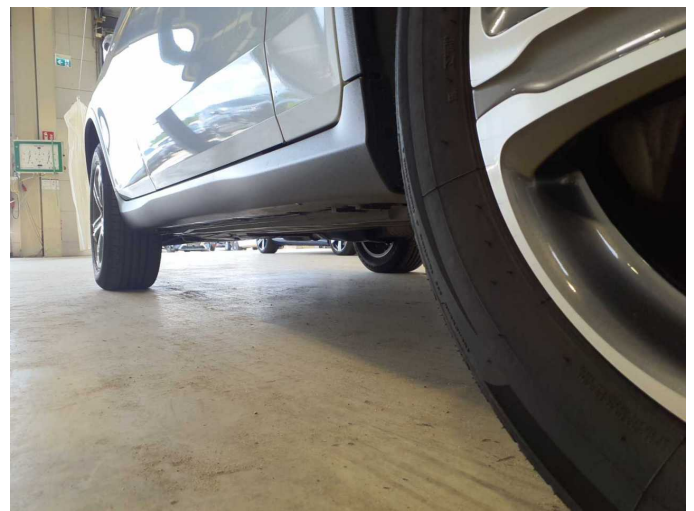


Figure 24: Misc.



Figure 25: Misc.



Figure 26: Misc.

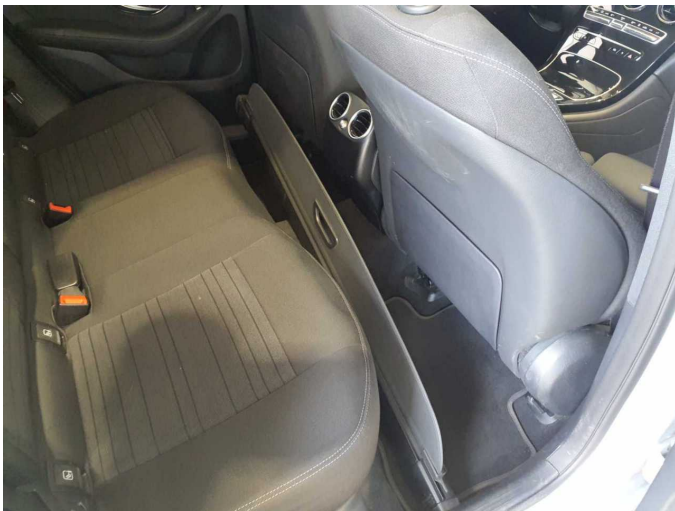


Figure 27: Misc.



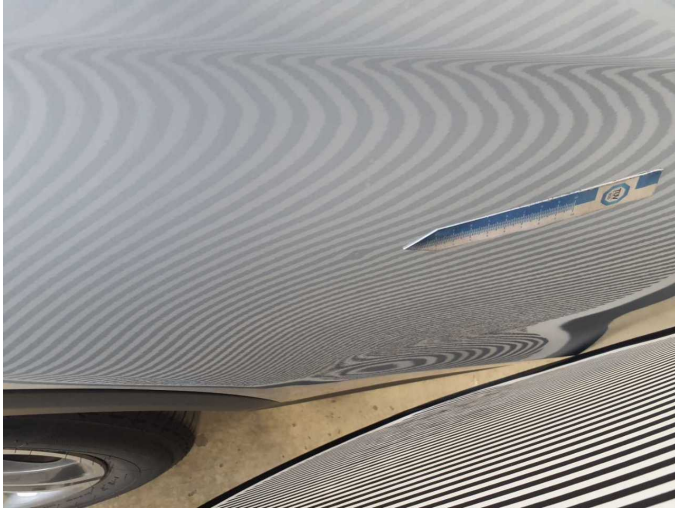
Figure 28: Misc.



Figure 29: Misc.



Damage 1: Door - rear right side: Door - dent(s) - Smooth repair work



Damage 1: Door - rear right side: Door - dent(s) - Smooth repair work



Damage 2: Front bumper: Front bumper - Stone chips - Smart repair



Damage 2: Front bumper: Front bumper - Stone chips - Smart repair



Damage 3: Side panel - rear right side: Sill - Scratch(es) - Smart repair



Damage 3: Side panel - rear right side: Sill - Scratch(es) - Smart repair



Damage 4: Indicator - front: Mirror - right side - Scratch(es) - Replace



Damage 4: Indicator - front: Mirror - right side - Scratch(es) - Replace



Damage 5: 2nd wheel set: 1 tyre - Leaking - Replace



Damage 5: 2nd wheel set: 1 tyre - Leaking - Replace



Damage 6: Rear bumper: Spoiler - Scratch(es) - Replace



Damage 6: Rear bumper: Spoiler - Scratch(es) - Replace



Damage 7: Rear bumper: Rear bumper - Scratch(es) - Paint



Damage 7: Rear bumper: Rear bumper - Scratch(es) - Paint



Damage 7: Rear bumper: Rear bumper - Scratch(es) - Paint



Damage 7: Rear bumper: Rear bumper - Scratch(es) - Paint