

Expertise

Protocol number: 45827494
Order No. / Reference: 26439915
Inspection date: 8 Jun 2026

Manufacturer: Mercedes-Benz

Model: GLB 220 d 8G-DCT Progressive

VIN: W1N4M1EB1PW289962



Vehicle details

Manufacturer / Type / Model / Equipment

Mercedes-Benz GLB 220 d 8G-DCT Progressive

Vehicle Identification number W1N4M1EB1PW289962

Mileage (Read) 102,149 km

First registration 10 Mar 2023

Number of holders 1

Power / Engine displacement 140 kw / 1,950 ccm

Fuel type / Cylinder Diesel / 4

Gearbox / Number of gears Automatic / 8

Type of drive Front drive

Type of vehicle SUV

Colour / colour code NACHTSCHWARZ

UNILACK

Doors / Seats 5 / 5

Upholstery type Cloth / leather
combination

Colour of upholstery Black



Vehicle details

Maintenance booklet / proof	digital proof / complete	Next maintenance in	276 Tag(e)
Last service on / at	03/2026 at 99,050 km		
Key is / should be	2 / 2	FZG documents	ZB#2 (B) was available (copy), ZB#1 (S) was not available.
		Letter No.	GS681599
Previous damage / Accident	None detectable	Repainting	Detectable
Inspection conditions	sufficient	Lifting equipment / pit	yes
Test drive	Not performed	Engine function test	Performed
Manufacturer key number/ type code number	2222 / ASE 00137		
Emission standard	EURO6;WLTP;AP;PI/CI; M, N1 I	fine dust sticker	
Permitted total weight	2,195 kg	Empty weight	

Tyres

Mounted tyres

#	Tyre size	Type of tyre	Manufacturer	Tread depth
1)	235/55 R18 100W	Summer tyres on Light alloy	Pirelli	4mm / 4mm
2)	235/55 R18 100W	Summer tyres on Light alloy	Pirelli	5mm / 5mm

Additional tyres

#	Tyre size	Type of tyre	Manufacturer	Tread depth
1)	215/65 R17 99H	Winter tyres on Light alloy	Michelin	4mm / 4mm
2)	215/65 R17 99H	Winter tyres on Light alloy	Michelin	4mm / 4mm

Legend: Tread depth information for the left tire is listed first, for the right tire it is listed second on the axle in the direction of travel.



Equipment

Standard equipment

- Airbag for driver and front passenger
- Airbag: Side airbag for driver and front passenger
- Active Brake Assist
- Anti-lock braking system (ABS)
- ATTENTION ASSIST
- Heated exterior mirrors (left and right), electrically adjustable from inside
- Roof rails in polished aluminum
- Double cup holder
- Third brake light in LED technology
- ECO start/stop function
- Electronic Stability Program (ESP)
- Electric window regulators (4)
- Luggage net on driver and passenger seatbacks
- Transmission: 8G-DCT dual-clutch automatic transmission, 8-speed
- Rear window heated
- Interior headliner fabric crystal grey
- Climate: THERMATIC automatic climate control
- Headrests (2)
- Rear headrests (3)
- Paint finish: Solid
- Cargo area cover (roller blind)
- Steering column mechanically adjustable lengthwise and heightwise.
- Navigation accessories: Extended MBUX functions
- Package: Seating comfort
- Radio: MBUX multimedia system
- Radio accessories: Touchpad
- Tire pressure monitoring system (TPMS)
- Wheels: 45.7 cm (18") alloy wheels, 4-spoke design, aerodynamically optimized
- Seats: Rear seat backrests foldable
- 12V power outlet in center console
- High-visibility vest for drivers
- Decorative elements spiral look
- Airbag: Kneebag for driver
- Airbag: Windowbags
- Active Lane Keeping Assist
- Rear armrest
- Automatic passenger airbag deactivation
- On-board computer
- Brake assist
- Diesel particulate filter
- Tachometer
- DYNAMIC SELECT
- Door sills with "Mercedes-Benz" lettering
- Chassis: Comfort chassis
- Velour floor mats
- Speed Limit Assistant
- Halogen headlights including integrated LED daytime running lights
- rear window wiper
- KEYLESS-GO start function
- Communication module (LTE) for the use of Mercedes me connect services
- Fuel tank with larger volume 60 l
- Loading floor height-adjustable and removable
- Steering wheel: Multifunction sports steering wheel in leather
- Mercedes-Benz emergency call system
- Package: Light and Visibility Package
- Upholstery: ARTICO leatherette/fabric
- Radio accessories: Digital radio
- Rain and light sensor
- Remote Services Plus
- Windscreen wipers with rain sensor
- Power steering
- Seats: Comfort seats
- Cruise control
- Immobiliser



Extra equipment

- Storage compartment in center console with roller blind (The roller blind for the storage compartment in the center console offers you an elegant privacy screen made of high-quality material. This looks good, the interior appears even tidier, and everything important is within easy reach. Typical everyday items such as a smartphone, wallet, or various keys fit into the practical storage compartment.)
- Climate control: THERMOTRONIC automatic climate control (two zones with individually adjustable temperature for driver and front passenger - automatic control of temperature, air volume and air distribution (Auto button) - sensors maintain the desired climate - fine dust activated carbon filter - dew point sensor prevents window fogging and enables energy-efficient climate control - rear center vents for improved climate comfort in the rear - residual heat button for heating/ventilation when the vehicle is switched off (country-dependent))
- Package: Business (Hard drive navigation - Smartphone integration - Traffic sign assistant - Preparation for digital key handover - Connectivity package navigation - Seat heating for driver and front passenger - Parking assistant with PARKTRONIC - Preparation for live traffic information)
- Package: KEYLESS-GO Comfort (vehicle key with KEYLESS-GO functionality - KEYLESS-GO access and drive authorization system - start/stop button - comfort opening and closing - door handles with chrome inlay - HANDS-FREE ACCESS - handle recess lighting - remote trunk lid closing - EASY-PACK trunk lid)
- Package: Cargo area (12V socket - reversible mat - nets on the left and right sides (left net is omitted in conjunction with 3rd row of seats for 2 persons (847)) - open compartment under net on the left - tension straps on the left and right sides - chrome loading sill protector)
- Package: Night (Progressive) (Door panels (claddings) in black with inset running board look in high-gloss black - Exterior mirror housings in black - Belt trim strip and window line trim strip in high-gloss black - Roof rails in black - Heat-insulating dark tinted glass - 45.7 cm (18") light alloy wheels in 5-twin-spoke design, black with gloss finish, with 235/55 R 18 tires on 7.5 J x 18 ET 53 - Radiator grille with double louvre in high-gloss black with chrome inlay - Visually, underride guards on front and rear bumpers in high-gloss black)
- Package: Mirror package (Exterior mirrors electrically fold in and out via a button in the driver's door control panel - the menu allows you to set the exterior mirrors to fold in automatically when locking the vehicle and unfold again when unlocking - the exterior mirror on the driver's side and the interior mirror dim automatically and continuously depending on the incident glare and ambient light)
- Heated windshield washer system
- Airbag: Side airbag in the rear
- Towbar with ESP trailer stabilization
- GUARD 360° Vehicle Protection Plus (Anti-theft alarm system - Tow-away protection with visual and audible warning in case of detected change in position - Alarm siren - Interior monitoring (triggers upon movement inside the vehicle) - Location tracking of stolen vehicles, free for 3 years from activation - Theft and parking collision detection, free for 3 years from activation - URBAN GUARD label on the front side windows)
- Steering wheel: Steering wheel heating
- Steering wheel: Multifunction sports steering wheel in Nappa leather (The multifunction sports steering wheel in Nappa leather with chrome control panels is flattened at the bottom and perforated in the grip area – an excellent choice for sporty driving. Among other things, the touch control buttons on the left and right operate a variety of functions, including navigation, telephony, and entertainment. Last but not least, you can also set the cruise control and distance control: everything under control without taking your hands off the steering wheel.)
- Package: Driving Assistance Package (Active Distance Assist DISTRONIC - Active Steering Assist - Active Speed Limit Assist - Active Brake Assist with Cross-Traffic Function - Evasive Steering Assist - Active Blind Spot Assist - Active Lane Keeping Assist - Active Emergency Stop Assist - Route-Based Speed Adaptation - Extended Automatic Restart on Motorways)
- Package: MBUX High-End Package (Hard drive navigation - Smartphone integration - Wireless charging system for mobile devices - Preparation for digital key handover - Connectivity package navigation - Central Media Display 10.25" - Fully digital instrument display with high-resolution 10.25" display - MBUX Augmented Reality for navigation - Traffic sign assistant - Preparation for live traffic information)
- Package: Parking package with 360° camera (Active Parking Assist including PARKTRONIC with visual and acoustic warnings of detected obstacles, notification of detected parking spaces in the instrument cluster via arrow display, convenient parking in and out of parallel and perpendicular parking spaces - 360° camera with four networked close-range cameras in the radiator grille, in the tailgate release handle and in the exterior mirror housings, displaying all four sides of the vehicle and visualizing the vehicle and its surroundings from a bird's-eye view in the multimedia system display)
- Panoramic sunroof
- Wheels: 18-inch (45.7 cm) alloy wheels, 4-spoke design, high-gloss black finish. (diamond-turned 235/55 R18 tires with 7.5 J x 18 ET 53 rims)



- Seats: Adjustable rear seats (A multi-talent - with the longitudinal adjustment of the rear seats, you can transform your vehicle in just a few moments from a small space miracle for rear passengers to a compact premium transporter. If required, you can slide the entire rear bench seat forward by up to 90 millimeters and back by 50 millimeters.)
- Cargo net (This feature protects you from loose items in the luggage compartment. The cargo net is very easy to use. You can attach or remove it in just a few steps.)
- Telephone accessories: Wireless charging system for mobile devices (wireless charging according to Qi standard for compatible mobile phones - fast connection setup between multimedia system and mobile phone via Near Field Communication (NFC) for identification of the mobile device - storage compartment for wireless charging is located in the storage compartment at the front of the center console)

Brief expert findings

Documents submitted	At the time of the inspection, the vehicle registration certificate Part 2 (title) was available, but the vehicle registration certificate Part 1 (document) was not. (Copy)
VIN comparison	The vehicle identification number (VIN) was read from the vehicle and its conformity with the submitted documents was confirmed by the undersigned during the inspection.
Inspection	The inspection conditions were sufficient for the assessment of the vehicle. Lifting equipment and/or a pit were available for examining the vehicle.
Test drive	No test drive/shunting maneuver was carried out during the inspection of the vehicle.
Engine function test	An engine test run was performed.

Value reducing factors

No.	Component group	Description
1	Body	Body - Glued / labelled - De-glue / neutralise
2	Bonnet	Bonnet - dent(s) - Smooth repair work
3	Side panel - rear left side	Side panel - dent(s) - Smooth repair work
4	Seat - front	Seat - left side (Netz hinten) - Broken / torn - Replace
5	Front bumper	Front bumper - Scratch(es) - Smart repair
6	Door - rear left side	Door - Scratch(es) - Smart repair
7	Wheel / tyres	Tyre - rear right side (Flanke,nicht fahrbereit) - Damaged - Replace
8	Wheel / tyres	Tyre - front right side (Flanke,nicht fahrbereit) - Damaged - Replace
9	Side panel - rear right side	Side panel - Dent / paintcoat damage - Smart repair
10	Vehicle glazing	Windscreen (Rissbildung) - Stone chips - repair according to calculation

Wear and tear

No.	Component group	Description
1	Misc.	Main inspection - No evidence - No deduction
2	2nd wheel set	1 tyre (Flanke) - Damaged - No deduction

The vehicle shows signs of wear and tear commensurate with its age and use.

Repainting

No.	Repainting
1	Mudguard - right side, Professionally carried out, Invoice of repair done Non-existent

Paint coat thickness measurement

Mudguard - right side	170 µm
-----------------------	--------



Order/Scope of Order

An order was placed to prepare a sales report for the described vehicle. This report includes the following:

- Description of key vehicle information
- Documentation of equipment features
(Delivery by third-party service providers)
- Documentation of damage, defects, missing parts
- Documentation of prior damage, unrepaired prior damage, repainting
- A brief visual or functional inspection of the equipment details, if possible.
(Functional testing of driver assistance systems is not included in the scope of services!)
- a photographic documentation of the vehicle

Basis for the order

This product is based on the guidelines for vehicle returns and valuations published by Alphabet Fleet GmbH. The expert makes the specific findings in each individual case objectively, within the framework of the prescribed standards, based on their own expertise.

The vehicle inspection takes place in a fully assembled, unassembled state.

Damage or defects that can only be detected during disassembly/diagnostic work or through further investigation remain within the realm of prognostic risk. An increased risk exists due to concealed defects caused by fraudulent misrepresentation and which were not identifiable by the expert.

Damage or defects resulting from normal use or wear and tear of the vehicle will be accepted in accordance with the applicable standard.

There was no explicit identification or monetary consideration of the expected features within the product.

Features which, in their nature and extent, slightly exceed normal use but do not constitute unacceptable damage, will be documented and indicated as signs of wear, if applicable.

Damage or defects that, according to the applicable standard, can no longer be attributed to normal use or wear and tear are listed under "Value Reducing Factors" in the product description.

Depending on the product specification, a monetary ID can be provided. If this takes place, the costs can be 100% or pro rata depending on the vehicle's age and mileage.

Previous damages

No apparent prior damage that had been repaired could be found on the vehicle.



Figure 1: Diagonal front (left)



Figure 2: Diagonal front (right)



Figure 3: Diagonal rear (left)



Figure 4: Diagonal rear (right)

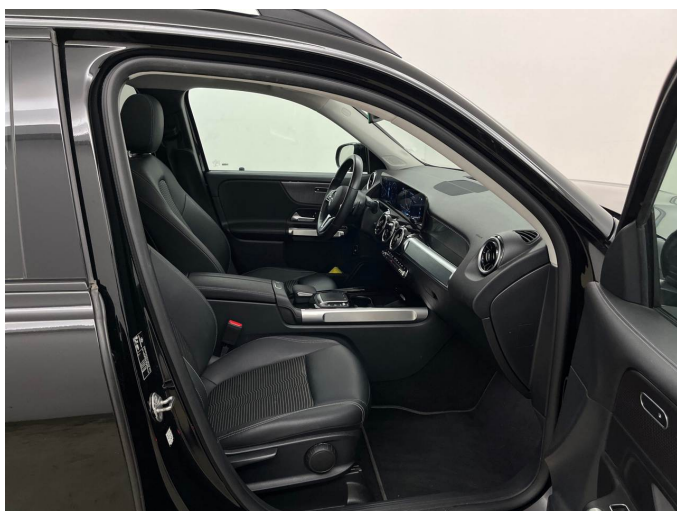


Figure 5: Interior - front



Figure 6: Interior - rear



Figure 7: Instrument cluster



Figure 8: Instrument panel



Figure 9: Interior 360° view



Figure 10: Cargo area



Figure 11: VIN



Figure 12: Mounted tyres



Figure 13: Documents



Figure 14: Additional tyres

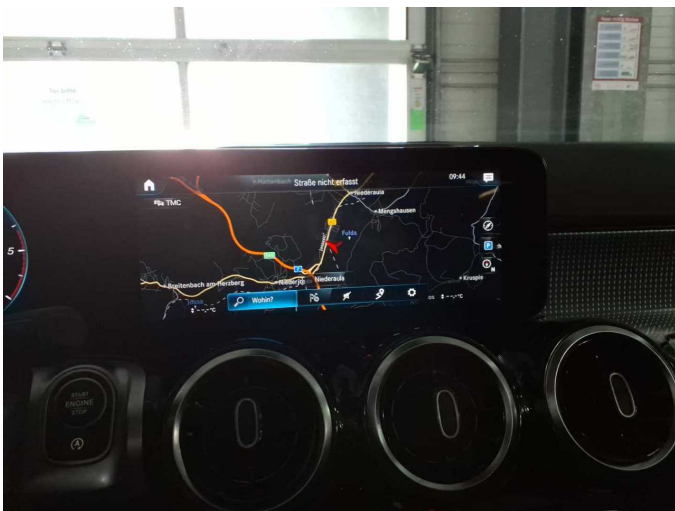


Figure 15: Navigation



Figure 16: Misc.



Figure 17: Misc.



Figure 18: Misc.



Figure 19: Misc.



Figure 20: Misc.

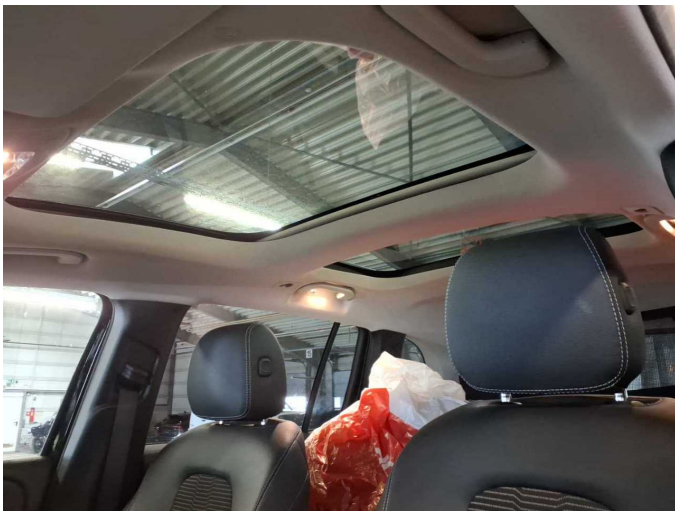


Figure 21: Misc.



Figure 22: Misc.

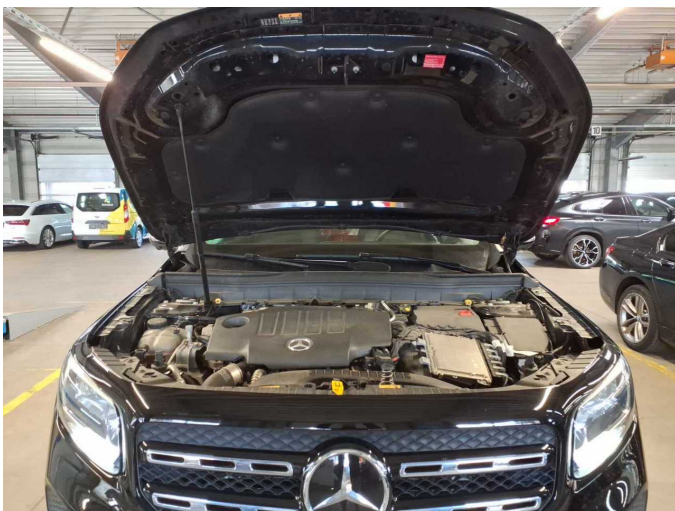


Figure 23: Misc.



Figure 24: Misc.



Figure 25: Misc.



Figure 26: Misc.

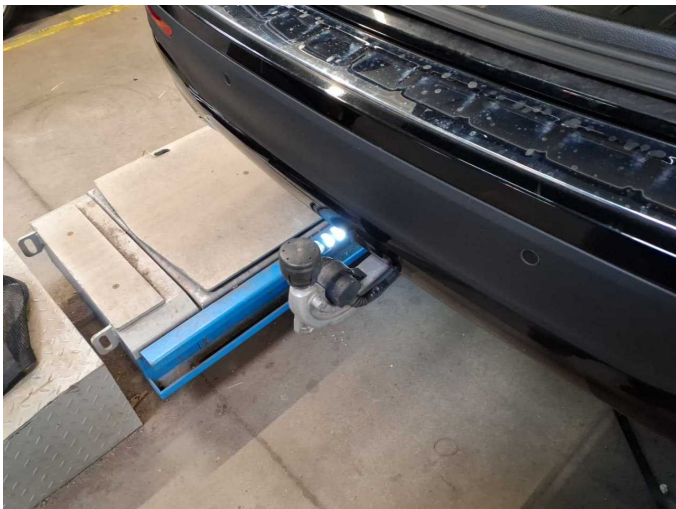


Figure 27: Misc.



Figure 28: Misc.



Figure 29: Misc.



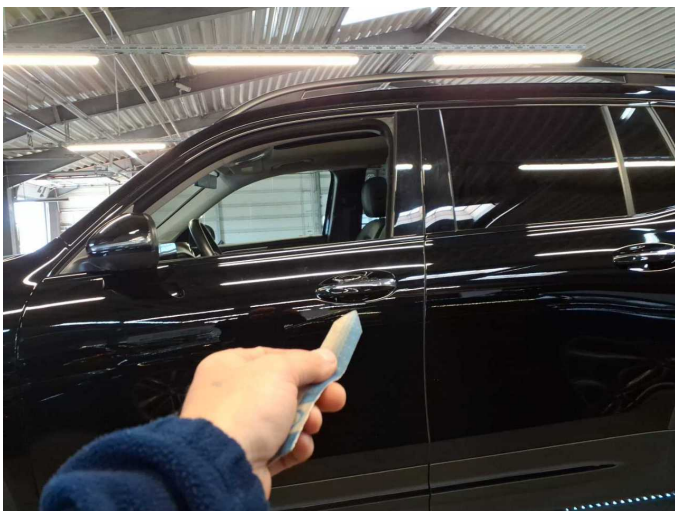
Damage 1: Body - Glued / labelled - De-glue / neutralise



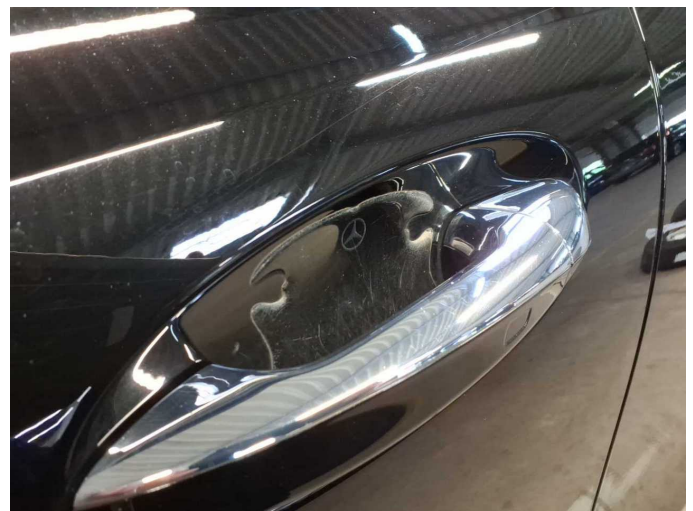
Damage 1: Body: Body - Glued / labelled - De-glove / neutralise



Damage 1: Body: Body - Glued / labelled - De-glove / neutralise



Damage 1: Body: Body - Glued / labelled - De-glove / neutralise



Damage 1: Body: Body - Glued / labelled - De-glove / neutralise



Damage 2: Bonnet: Bonnet - dent(s) - Smooth repair work



Damage 2: Bonnet: Bonnet - dent(s) - Smooth repair work



Damage 3: Side panel - rear left side: Side panel - dent(s) - Smooth repair work



Damage 3: Side panel - rear left side: Side panel - dent(s) - Smooth repair work



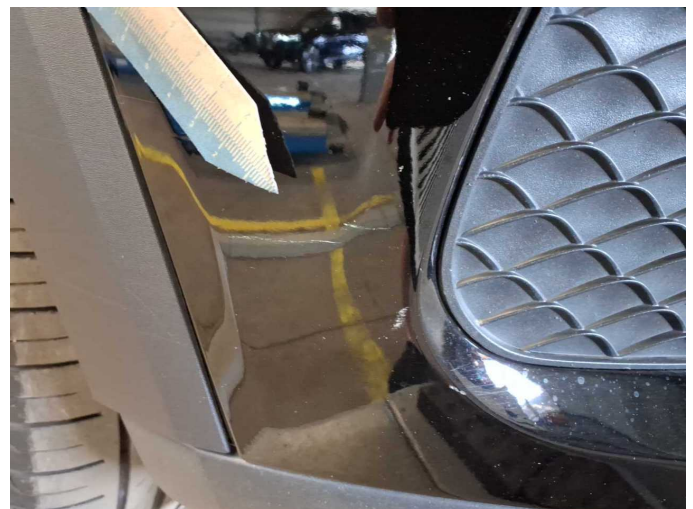
Damage 4: Seat - front: Seat - left side (Netz hinten) - Broken / torn - Replace



Damage 4: Seat - front: Seat - left side (Netz hinten) - Broken / torn - Replace



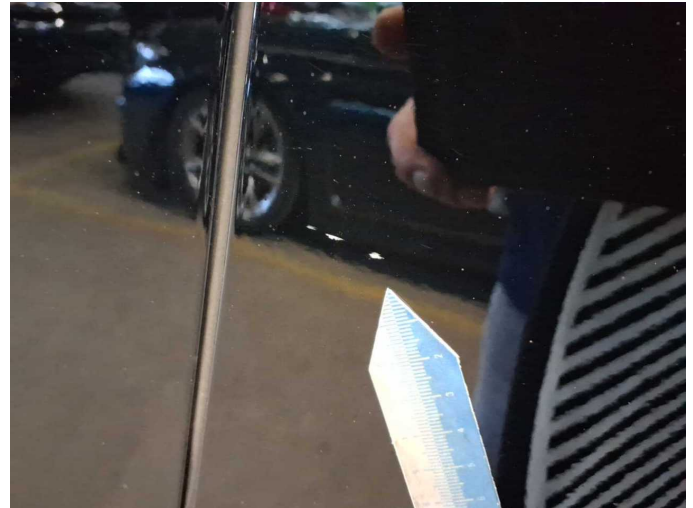
Damage 5: Front bumper: Front bumper - Scratch(es) - Smart repair



Damage 5: Front bumper: Front bumper - Scratch(es) - Smart repair



Damage 6: Door - rear left side: Door - Scratch(es) - Smart repair



Damage 6: Door - rear left side: Door - Scratch(es) - Smart repair



Damage 7: Wheel / tyres: Tyre - rear right side (Flanke,nicht fahrbereit) - Damaged - Replace



Damage 7: Wheel / tyres: Tyre - rear right side (Flanke,nicht fahrbereit) - Damaged - Replace



Damage 8: Wheel / tyres: Tyre - front right side (Flanke,nicht fahrbereit) - Damaged - Replace



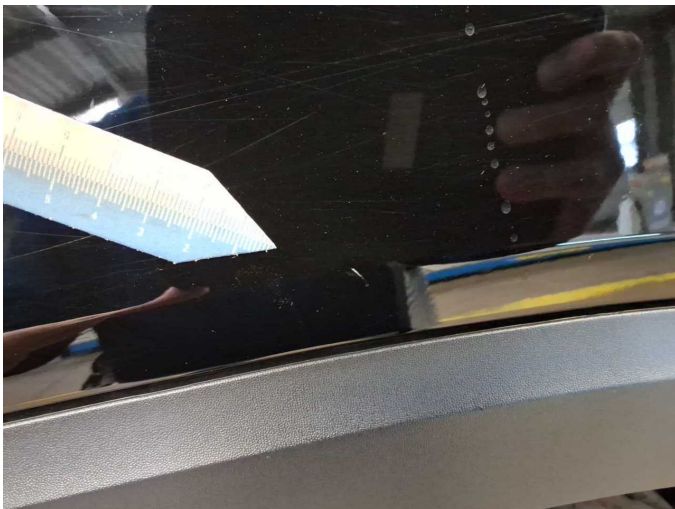
Damage 8: Wheel / tyres: Tyre - front right side (Flanke,nicht fahrbereit) - Damaged - Replace



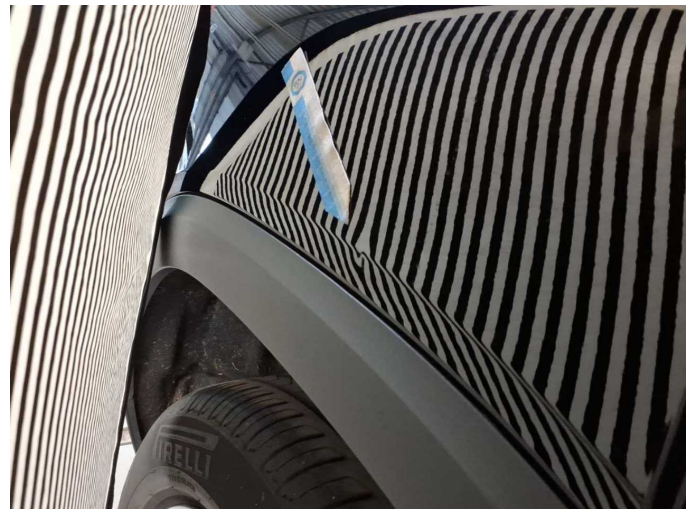
Damage 8: Wheel / tyres: Tyre - front right side (Flanke, nicht fahrbereit) - Damaged - Replace



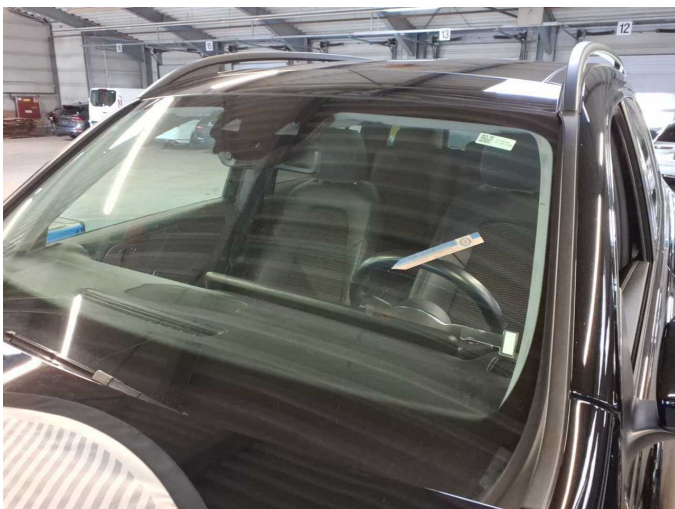
Damage 9: Side panel - rear right side: Side panel - Dent / paintcoat damage - Smart repair



Damage 9: Side panel - rear right side: Side panel - Dent / paintcoat damage - Smart repair



Damage 9: Side panel - rear right side: Side panel - Dent / paintcoat damage - Smart repair



Damage 10: Vehicle glazing: Windscreen (Rissbildung) - Stone chips - repair according to calculation



Damage 10: Vehicle glazing: Windscreen (Rissbildung) - Stone chips - repair according to calculation



Damage 10: Vehicle glazing: Windscreen (Rissbildung) - Stone chips - repair according to calculation



Wear and tear 2: 2nd wheel set: 1 tyre (Flanke) - Damaged - No deduction



Wear and tear 2: 2nd wheel set: 1 tyre (Flanke) - Damaged - No deduction



Repainting 1: Mudguard - right side



Wartungshistorie

(gemäß Auftraggeber Informationen)

Fahrgestellnummer: W1N4M1EB1PW289962

Hersteller / Modell: MERCEDES-BENZ MERCEDES-BENZ GLB 220 d 8G-DCT
Progressive

Datum	KM-Stand	Beschreibung
10.03.2026	99.050	HU + AU; Regelwartungsdienst
04.07.2025	76.301	Bremsscheiben+Beläge v+h; Regelwartungsdienst
01.10.2024	51.667	Regelwartungsdienst
13.11.2023	26.013	Regelwartungsdienst