

## Expertise

Protocol number: 46181648  
Order No. / Reference: 26554469  
Inspection date: 24 Jun 2026

Manufacturer: Opel

Model: Astra 1.5 D Start/Stop Sports Tourer Automatik Business  
Elegance

VIN: W0VBE8EV4M8018317



### Vehicle details

#### Manufacturer / Type / Model / Equipment

Opel Astra 1.5 D Start/Stop Sports Tourer Automatik Business  
Elegance

**Vehicle Identification number** W0VBE8EV4M8018317  
**Mileage (Read)** 85,712 km  
**First registration** 21 May 2021  
**Number of holders** 1

**Power / Engine displacement** 90 kw / 1,496 ccm  
**Fuel type / Cylinder** Diesel / 3  
**Gearbox / Number of gears** Automatic / 9  
**Type of drive** Front drive

**Type of vehicle** Station wagon

**Colour / colour code** Schneeweiß  
**Doors / Seats** 5 / 5  
**Upholstery type** Cloth / leather combination  
**Colour of upholstery** Anthracite-Black



## Vehicle details

<b>Maintenance booklet / proof</b>	Available / complete	<b>Next maintenance in</b>	42 %
<b>Last service on / at</b>	11/2025 at 77,844 km		
<b>Key is / should be</b>	2 / 2	<b>FZG documents</b>	ZB#2 (B) was available (copy), ZB#1 (S) was not available.
		<b>Letter No.</b>	GA209193
<b>Previous damage / Accident</b>	None detectable	<b>Repainting</b>	None detectable
<b>Inspection conditions</b>	sufficient	<b>Lifting equipment / pit</b>	No
<b>Test drive</b>	Not performed	<b>Engine function test</b>	Performed
<b>Manufacturer key number/ type code number</b>	1844 / ALM 00103		
<b>Emission standard</b>	EURO6;WLTP;AP;PI/CI; M, N1 I	<b>fine dust sticker</b>	
<b>Permitted total weight</b>	1,980 kg	<b>Empty weight</b>	

## Tyres

### Mounted tyres

#	Tyre size	Type of tyre	Manufacturer	Tread depth
1)	205/55 R16 91V	Summer tyres on Light alloy	Continental	5mm / 5mm
2)	205/55 R16 91V	Summer tyres on Light alloy	Continental	4mm / 4mm

### Replacement

Typ	Tyre size	Type of tyre	Manufacturer	Tread depth
	Tirefit	Expiration date 09/2025		

**Legend: Tread depth information for the left tire is listed first, for the right tire it is listed second on the axle in the direction of travel.**

TÜV SÜD Auto Partner GmbH  
Wiesenring 2  
04159 Leipzig

Inspection location  
Hartmann Fleet Professionals GmbH  
Leerenstraße 25  
29683 Bad Fallingbommel



## Equipment



## Standard equipment

- 2 ignition keys
- Adaptive brake light
- Airbag: Chest-pelvis side airbag for driver and front passenger side
- Anti-lock braking system (ABS)
- Electrically adjustable and heated exterior mirrors for driver and passenger side
- On-board computer
- Roof design line, top in chrome, B-pillar in high-gloss black
- Diesel particulate filter (DPF)
- Electronic Stability Program Plus (ESP Plus)
- Front camera (Gen.3)
- Speed controller with limiter
- Back window, heater
- Interior lighting, front and rear
- IntelliLux LED Matrix Light (LED matrix headlights with individual light distribution and the following functions: - City light - Highway light - Country road light - Static cornering light - Turning light - Parking function light - High beam: traffic-dependent dimming taking into account preceding and oncoming road users - Automatic headlight range control, LED taillights)
- trunk light
- Rear headrests (3) (height adjustable)
- Paint finish: Solid
- LED daytime running lights (including LED turn signals, front, manual headlight range adjustment)
- Steering wheel: Leather steering wheel (steering wheel remote control)
- Make-up mirror in sun visor, passenger side
- Center armrest, sliding, front (incl. storage compartments and leather steering wheel)
- Electric parking brake
- Parkpilot, front and rear parking aid (with acoustic warning signal when parking forwards and backwards)
- Pedal system: Disengaging safety pedals (PRS (Pedal Release System))
- Upholstery: Fabric/Premium leather look
- Quickheat rapid heating system (electric auxiliary heater)
- Tire repair kit (including tire sealant and 12-volt compressor (without jack))
- Tire pressure monitoring system (tire pressure display for each wheel)
- Digital reversing camera with steering guidelines
- Headlights in high-gloss chrome look
- Keyless locking and starting system (for driver and passenger doors as well as the luggage compartment)
- Service interval indicator
- Power steering (speed-dependent)
- Safety net for luggage compartment (mounting fixtures behind the 1st and 2nd row of seats)
- Storage compartments
- Airbag for driver and passenger side
- Airbag: Head airbags, 1st and 2nd row (outer seats)
- Ambient lighting, front doors
- Automatic activation of the hazard warning lights
- Electrically folding exterior mirrors
- Hill Start Assist
- third brake light
- Roof rails, silver
- Decorative trim strips in piano black
- Tachometer
- Electric windows front and rear
- Pedestrian protection
- Transmission: 9-speed automatic transmission
- rear window wiper
- Instruments, black, with high-gloss chrome rings, 3.5" driver information display
- Bodywork with full galvanization of all corrosion-prone parts
- Child safety lock in the rear doors, manual
- Automatic climate control, two zones (with separate temperature control for driver and front passenger, including: - recirculation mode, manual - particle/activated carbon filter - automatic air distribution - sun position sensor - humidity sensor)
- Front headrests (height adjustable)
- Cargo area cover
- Light alloy wheels 7 J x 16 in "10-spoke" design (with tires 205/55 R 16)
- Steering column, height and reach adjustable
- Lighting equipment (illuminated make-up mirrors in sun visors - reading lights, rear - ambient lighting in the roof console)
- Park & Go (automatic parking assistant including front and rear parking pilot, and audiovisual warning, detection of parallel and perpendicular parking spaces at a driving speed below 30 km/h and automatic steering of the vehicle - blind spot warning in both exterior mirrors (active up to 140 km/h) - electrically folding exterior mirrors - reversing camera with steering guidelines)
- Radio: Multimedia Navi Pro with 8" color touchscreen display (Multimedia Radio, voice control for audio, telephone and navigation, digital radio reception DAB/DAB+/DMB-R, navigation system with SD card storage, road map for over 30 European countries, map display in 2D and 3D, dynamic route guidance via map and/or arrow display and voice prompts, connected navigation services, predictive navigation (recognition of favorite destinations), online map updates (4 times a year), real-time traffic information, 8" driver information display)
- Seat belts: Three-point seat belts in all seats (belt force limiter and pyrotechnic belt tensioner, front - double belt tensioner, front - seat belt warning, front and rear)



- Visibility features (rain sensor, front interior rearview mirror automatically dimming, automatic dimming headlights with tunnel detection)
- Start/Stop system (driving assistant - reinforced starter - high-performance battery - eco switch to deactivate the start/stop function - brake energy recuperation)
- 12V power outlet in the center console
- Exterior door handles, in car color
- Ambient lighting
- Pre-installation for child seat restraint system "ISOFIX" (incl. top tether attachment points, rear outer)
- Central locking with remote control and interior switches (ignition key matching exterior color)

- Seats: Ergonomic active seat, driver and front passenger (certified by the Campaign for Healthy Backs (AGR) Driver and front passenger seat: - Length, height and tilt adjustable - Electropneumatic lumbar support adjustable in height and length - Extendable thigh support - Pocket on the front seat back - Interior equipment)
- Traction Control (TC) Plus (traction control with engine and brake intervention)
- Tie-down points 4 in the luggage compartment
- Immobiliser
- Heat-insulating glazing, green tinted, and windshield

### Extra equipment

- Electric tailgate with foot sensor (Sensor-controlled electric tailgate, self-opening and closing via foot gesture or push of a button, including keyless locking and starting system Keyless Open & Start)
- Paintwork: Solid special color Snow White
- Radio: Digital radio reception DAB/DAB+/DMB-R
- Solar Protect thermal insulation glazing
- Phone: Wireless Charging (Wireless charging of smartphones in the center console)
- Heated windscreen, ThermoTec

- Interior equipment Sports Tourer (rear seat backrest foldable in 40:20:40 ratio - rear center armrest with pass-through from the luggage compartment - FlexFold rear seat backrest)
- Steering wheel: Heated leather steering wheel and seat heating, multi-stage, driver and front passenger (including rear footwell heating)
- Traffic sign assistant with pedestrian detection, front (detection of speed limits, no-overtaking zones and their cancellation, additional information signs (e.g., for wet conditions, slippery surfaces, left/right directions) on standard traffic signs, beginning and end of motorways, expressways and traffic-calmed areas, display of the detected sign in the driver information display (depending on traffic sign quality, visibility and weather conditions), automatic activation between 14 km/h and 200 km/h (during the day) or 150 km/h (at night))

### Brief expert findings

Documents submitted	At the time of the inspection, the vehicle registration certificate Part 2 (title) was available, but the vehicle registration certificate Part 1 (document) was not. (Copy)
VIN comparison	The vehicle identification number (VIN) was read from the vehicle and its conformity with the submitted documents was confirmed by the undersigned during the inspection.
Inspection	The inspection conditions were sufficient for the assessment of the vehicle. No lifting equipment or pit was available for inspecting the vehicle. Therefore, inspection of the vehicle's underside was only possible to a limited extent.
Test drive	No test drive/shunting maneuver was carried out during the inspection of the vehicle.
Engine function test	An engine test run was performed.

### Value reducing factors

No.	Component group	Description
1	Equipment	Tirefit filler - Expired - Replace
2	Sill - left side	Sill - Scratch(es) - Smart repair
3	Sill - right side	Sill - Scratch(es) - Smart repair
4	Rear bumper	Rear bumper - Scratch(es) - Smart repair
5	Body	Body (Flugrost, Mehrkosten sind möglich) - Paint defect - Clean
6	Door - rear left side	Door - Scratch(es) - Paint



## Wear and tear

No.	Component group	Description
1	Vehicle glazing	Windscreen - Stone chips - No deduction
2	Bonnet	Bonnet - Stone chips - No deduction
3	Front bumper	Front bumper - Stone chips - No deduction

The vehicle shows signs of wear and tear commensurate with its age and use.

## Order/Scope of Order

An order was placed to prepare a sales report for the described vehicle. This report includes the following:

- Description of key vehicle information
- Documentation of equipment features  
(*Delivery by third-party service providers*)
- Documentation of damage, defects, missing parts
- Documentation of prior damage, unrepaired prior damage, repainting
- A brief visual or functional inspection of the equipment details, if possible.  
(*Functional testing of driver assistance systems is not included in the scope of services!*)
- a photographic documentation of the vehicle

## Basis for the order

This product is based on the guidelines for vehicle returns and valuations published by Alphabet Fleet GmbH. The expert makes the specific findings in each individual case objectively, within the framework of the prescribed standards, based on their own expertise.

The vehicle inspection takes place in a fully assembled, unassembled state.

Damage or defects that can only be detected during disassembly/diagnostic work or through further investigation remain within the realm of prognostic risk. An increased risk exists due to concealed defects caused by fraudulent misrepresentation and which were not identifiable by the expert.

Damage or defects resulting from normal use or wear and tear of the vehicle will be accepted in accordance with the applicable standard.

There was no explicit identification or monetary consideration of the expected features within the product.

Features which, in their nature and extent, slightly exceed normal use but do not constitute unacceptable damage, will be documented and indicated as signs of wear, if applicable.

Damage or defects that, according to the applicable standard, can no longer be attributed to normal use or wear and tear are listed under "Value Reducing Factors" in the product description.

Depending on the product specification, a monetary ID can be provided. If this takes place, the costs can be 100% or pro rata depending on the vehicle's age and mileage.

## Previous damages

No apparent prior damage that had been repaired could be found on the vehicle.



Figure 1: Diagonal front (left)



Figure 2: Diagonal front (right)



Figure 3: Diagonal rear (left)



Figure 4: Diagonal rear (right)



Figure 5: Interior - front



Figure 6: Interior - rear



Figure 7: Instrument cluster



Figure 8: Instrument panel



Figure 9: Interior 360° view



Figure 10: Cargo area

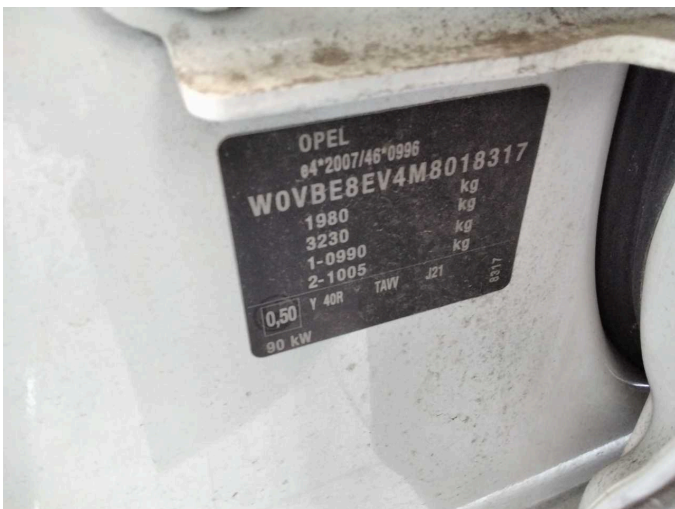


Figure 11: VIN



Figure 12: Mounted tyres



Figure 13: Documents



Figure 14: Documents



Figure 15: Documents

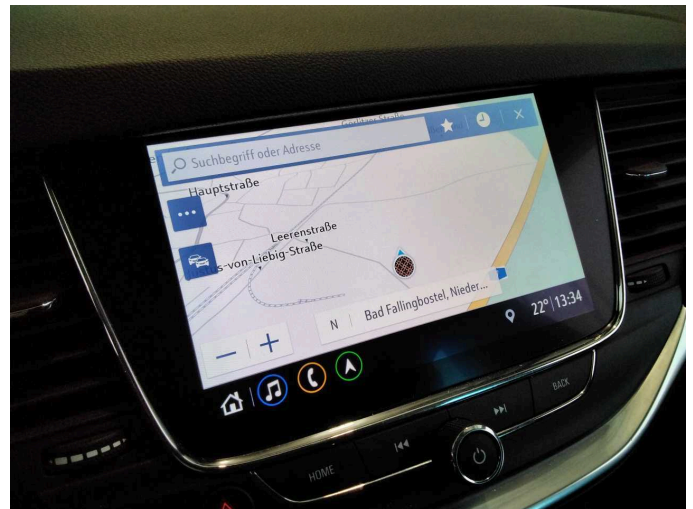


Figure 16: Navigation



Figure 17: Misc.



Figure 18: Misc.



Figure 19: Misc.



Figure 20: Misc.



Figure 21: Misc.



Figure 22: Misc.



Figure 23: Misc.



Figure 24: Misc.



Figure 25: Misc.

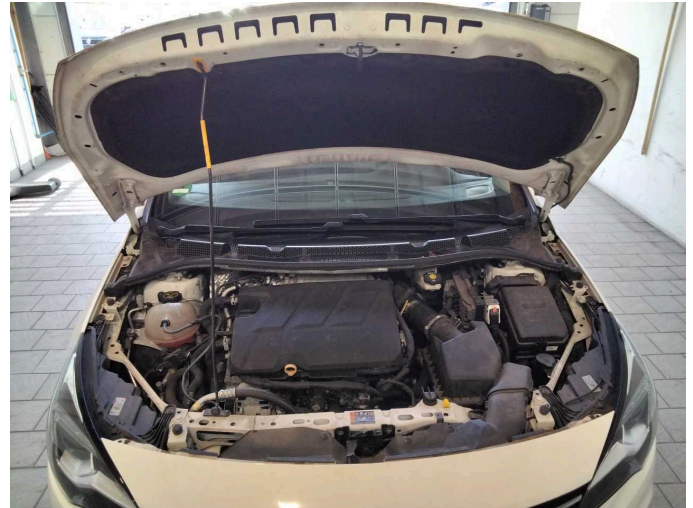


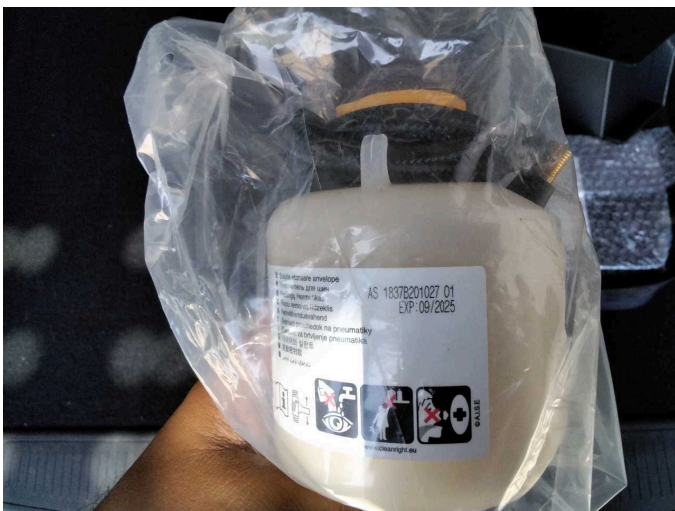
Figure 26: Misc.



Figure 27: Misc.



Figure 28: Misc.



Damage 1: Equipment: Tirefit filler - Expired - Replace



Damage 2: Sill - left side: Sill - Scratch(es) - Smart repair



**Damage 2:** Sill - left side: Sill - Scratch(es) - Smart repair



**Damage 3:** Sill - right side: Sill - Scratch(es) - Smart repair



**Damage 3:** Sill - right side: Sill - Scratch(es) - Smart repair



**Damage 4:** Rear bumper: Rear bumper - Scratch(es) - Smart repair



**Damage 5:** Body: Body (Flugrost, Mehrkosten sind möglich) - Paint defect - Clean



**Damage 5:** Body: Body (Flugrost, Mehrkosten sind möglich) - Paint defect - Clean



**Damage 5:** Body: Body (Flugrost, Mehrkosten sind möglich) - Paint defect - Clean



**Damage 5:** Body: Body (Flugrost, Mehrkosten sind möglich) - Paint defect - Clean



**Damage 5:** Body: Body (Flugrost, Mehrkosten sind möglich) - Paint defect - Clean



**Damage 5:** Body: Body (Flugrost, Mehrkosten sind möglich) - Paint defect - Clean



**Damage 5:** Body: Body (Flugrost, Mehrkosten sind möglich) - Paint defect - Clean



**Damage 5:** Body: Body (Flugrost, Mehrkosten sind möglich) - Paint defect - Clean



**Damage 5:** Body: Body (Flugrost, Mehrkosten sind möglich) - Paint defect - Clean



**Damage 5:** Body: Body (Flugrost, Mehrkosten sind möglich) - Paint defect - Clean



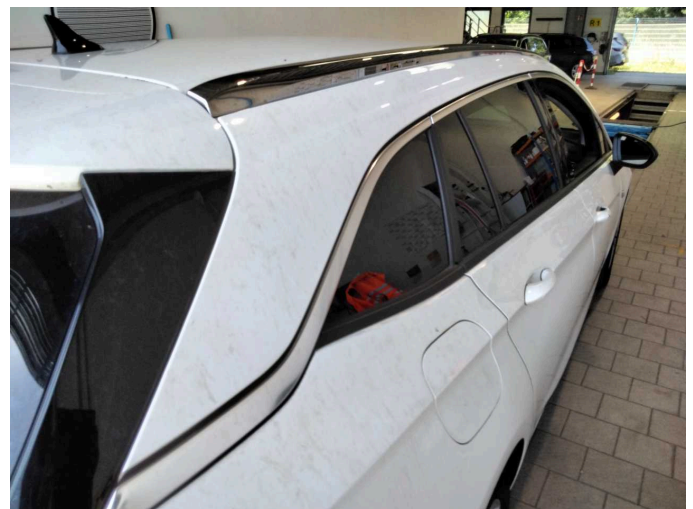
**Damage 5:** Body: Body (Flugrost, Mehrkosten sind möglich) - Paint defect - Clean



**Damage 5:** Body: Body (Flugrost, Mehrkosten sind möglich) - Paint defect - Clean



**Damage 5:** Body: Body (Flugrost, Mehrkosten sind möglich) - Paint defect - Clean



**Damage 5:** Body: Body (Flugrost, Mehrkosten sind möglich) - Paint defect - Clean



**Damage 5:** Body: Body (Flugrost, Mehrkosten sind möglich) - Paint defect - Clean



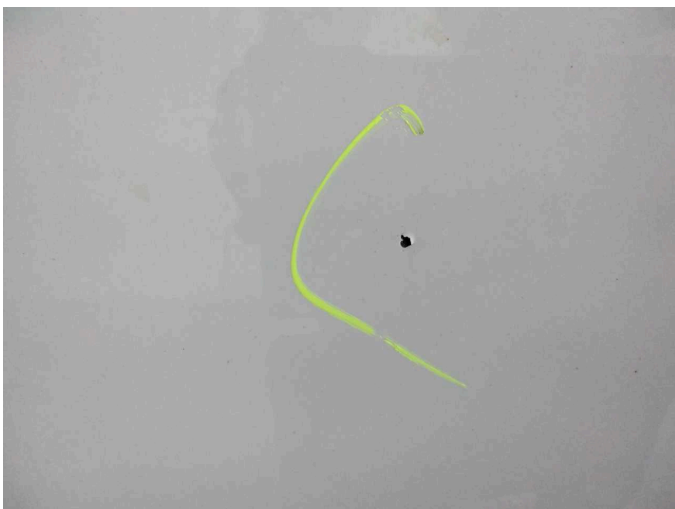
**Damage 5:** Body: Body (Flugrost, Mehrkosten sind möglich) - Paint defect - Clean



**Damage 5:** Body: Body (Flugrost, Mehrkosten sind möglich) - Paint defect - Clean



**Damage 6:** Door - rear left side: Door - Scratch(es) - Paint



**Damage 6:** Door - rear left side: Door - Scratch(es) - Paint



**Wear and tear 1:** Vehicle glazing: Windscreen - Stone chips - No deduction



**Wear and tear 2:** Bonnet: Bonnet - Stone chips - No deduction



**Wear and tear 3:** Front bumper: Front bumper - Stone chips - No deduction