

Expertise

Protocol number: 46279945
Order No. / Reference: 26487827
Inspection date: 22 Jun 2026

Manufacturer: Peugeot

Model: 308 SW BlueHDi 130 EAT8 Allure Pack

VIN: VR3FCYHZTNY646837



Vehicle details

Manufacturer / Type / Model / Equipment

Peugeot 308 SW BlueHDi 130 EAT8 Allure Pack

Vehicle Identification number VR3FCYHZTNY646837

Mileage (Read) 90,686 km

First registration 19 Apr 2023

Number of holders 1

Power / Engine displacement 96 kw / 1,499 ccm

Fuel type / Cylinder Diesel / 4

Gearbox / Number of gears Automatic / 8

Type of drive Front drive

Type of vehicle Station wagon

Colour / colour code Platinum Grau Metallic

Doors / Seats 5 / 5

Upholstery type Cloth / leather combination

Colour of upholstery Black

readiness to drive Roadworthy



Vehicle details			
Maintenance booklet / proof	Available / complete	Next maintenance in	6 Monat(e)
Last service on / at	12/2025 at 76,428 km		
Key is / should be	2 / 2	FZG documents	ZB#2 (B) was available (copy), ZB#1 (S) was not available.
		Letter No.	GG058121
Previous damage / Accident	Detectable	Repainting	None detectable
Inspection conditions	sufficient	Lifting equipment / pit	No
Test drive	Not performed	Engine function test	Performed
readiness to drive	Roadworthy		
Manufacturer key number/ type code number	1889 / AEI 00038		
Emission standard	EURO6;WLTP;AP;PI/CI; M, N1 I	fine dust sticker	
Permitted total weight	1,950 kg	Empty weight	

Tyres

Mounted tyres				
#	Tyre size	Type of tyre	Manufacturer	Tread depth
1)	205/55 R16 91H	Winter tyres on Light alloy	Goodyear	4mm / 4mm
2)	205/55 R16 91H	Winter tyres on Light alloy	Goodyear	6mm / 6mm

Additional tyres				
#	Tyre size	Type of tyre	Manufacturer	Tread depth
1)	225/45 R17 94V	Summer tyres on Light alloy	Michelin	5mm / 5mm
2)	225/45 R17 94V	Summer tyres on Light alloy	Michelin	6 mm
	225/45 R17 91Y	Summer tyres on Light alloy	Sonstige	6 mm

Replacement				
Typ	Tyre size	Type of tyre	Manufacturer	Tread depth
	Tirefit	Expiration date 06/2028		

Legend: Tread depth information for the left tire is listed first, for the right tire it is listed second on the axle in the direction of travel.

TÜV SÜD Auto Partner GmbH
Gutenbergstraße 13
70771 Leinfelden-Echterdingen

Inspection location
Hartmann Fleet Professionals GmbH
Leerenstraße 25
29683 Bad Fallingbommel



Equipment



Standard equipment

- Storage compartment: Illuminated glove compartment
- Active Safety Brake Plus (Active day and night between 5 and 140 km/h, depending on the detected obstacle (moving obstacle: 5-140 km/h; stationary obstacle/cyclist: 5-80 km/h; pedestrian: 5-60 km/h). At speeds below 30 km/h, the vehicle is braked to a complete stop; between 30 and 140 km/h, the system reduces the impact speed by a maximum of 50 km/h. Above this threshold, the driver must brake manually.)
- Electrically adjustable, heated and folding exterior mirrors (with LED approach lighting - integrated LED turn signals)
- Turn signals with lane change indicator function
- third brake light
- Digital instrument cluster with high-resolution 10" screen, adjustable and customizable
- Eco-LED headlights
- Front parking aid, acoustic and visual
- Driving mode selector (Sport - Normal - Eco)
- Electric windows, front and rear (with comfort operation and anti-pinch protection)
- Follow-me-home function (automatic)
- Laminated glass windshield, noise-reducing
- Transmission: 8-speed automatic transmission EAT8
- Heated rear window
- Rear apron in black
- Interior mirror automatically dimming
- Map pockets on the front seatbacks
- Keyless System Plus (keyless access and start system)
- Child safety lock at the rear
- Automatic climate control (2-zone), with activated carbon filter (separately adjustable for driver and front passenger)
- LED lighting in the front footwell
- LED ceiling lighting at the front (2 reading lights at the front and rear)
- LED taillights
- Steering wheel: Small multifunction leather steering wheel, flattened at the top and bottom.
- light sensor
- Rear center armrest (with pass-through flap)
- front center armrest
- Multifunctional touchscreen with 10" HD color display (capacitive screen - multi-window capable with widgets or shortcuts)
- Multi-collision brake
- Emergency brake assist with automatic activation of the hazard warning lights
- Peugeot i-Toggles (screen with configurable virtual buttons for the most important functions such as radio, air conditioning, navigation system, vehicle settings, telephone and connectivity)
- Wheels: Tire repair kit (compressor + tire sealant spray)
- Reversing camera with 180° surround view
- Electric power steering
- Seats: Passenger seat height adjustable
- ABS (Anti-lock Braking System) with electronic brake force distribution
- Airbags (6) (Driver and front passenger airbag - front passenger airbag deactivatable - front side airbags - front and rear curtain airbags)
- Rear Cross Traffic Alert (Rear Cross Traffic Alert)
- Adaptive Cruise Control (ACC) with Stop & Go function (EAT8) (detection of stop signs, one-way street signs and start/end of no-overtaking zones)
- Exterior mirror caps in Perla Nera Black
- Hill start assist
- On-board computer
- Decorative fabric inserts "Texa" for door panels and dashboard
- Tachometer
- Rear parking aid, acoustic and visual
- Electronic Stability Program (ESP) (with ASR (traction control))
- High beam assist
- electric parking brake
- Front collision warning
- luggage compartment roller blind
- Cup holder in the center console
- rear window wiper
- Infotainment system: PEUGEOT i-Connect Advanced (Infotainment system: up to 8 profiles and 2 smartphones simultaneously via Bluetooth, - Bi-tuner, 6 speakers (midrange and tweeters) - Digital radio reception DAB+ - MP3-compatible - Bluetooth hands-free system with audio streaming via Bluetooth - 2 front USB-C ports - Steering wheel and touchscreen controls - Real-time navigation "by TomTom Services" - Over-the-air map updates - OK PEUGEOT voice control for navigation, telephone, climate control and media)
- LED daytime running lights
- Steering wheel: Leather steering wheel with paddle shifters
- Mirror Screen (Wireless transmission of multimedia content and apps from a compatible smartphone to the vehicle's touchscreen, allowing direct control of compatible functions and apps - CarPlay (for compatible Apple iPhone models) - Android Auto (for compatible smartphone models with Android operating system))
- Fatigue warning
- Particulate filter: FAP diesel particulate filter
- Break warning
- Upholstery: Fabric/faux leather
- Rain sensor
- Tire pressure monitoring system
- Wheels: Halong 17" alloy wheels, two-tone (tires 225/45 R17 94V)
- Side windows in the second row and rear window are more heavily tinted.
- Seats: Driver's seat height adjustable
- Seats: Rear bench seat and backrest split 40/20/40, foldable (Magic Flat system with control element in the boot)



- Seats: Manual lumbar support for driver
- Seats: Rear seats (3 three-point safety belts - belt force limiters on the side seats - warning light and warning signal when the safety belt is released - Isofix child seat anchors on the outer seats)
- Lane keeping assist with steering intervention
- 12-volt socket
- Stop&Start automatic
- Blind spot assist
- Chrome-plated decorative exhaust tailpipes
- Immobiliser
- Central locking system, activatable from inside via remote control

- Seats: Front seats (three-point seat belts with belt locking devices - pyrotechnic belt tensioners and electronically controlled belt force limiters - warning light and warning signal when the seat belt is not fastened or is released for driver and front passenger - safety-optimized headrests)
- Doors lock automatically when driving off
- Traffic sign recognition (with display of the speed recommendation in the instrument cluster)
- Decorative trim in high-gloss black on the side windows
- Adjustable intermediate loading shelf

Extra equipment

- Detachable towbar (with removable ball head without tools)
- Paint finish: Metallic
- Seats: Heated front seats

Brief expert findings

Documents submitted	At the time of the inspection, the vehicle registration certificate Part 2 (title) was available, but the vehicle registration certificate Part 1 (document) was not. (Copy)
VIN comparison	The vehicle identification number (VIN) was read from the vehicle and its conformity with the submitted documents was confirmed by the undersigned during the inspection.
Inspection	The inspection conditions were sufficient for the assessment of the vehicle. No lifting equipment or pit was available for inspecting the vehicle. Therefore, inspection of the vehicle's underside was only possible to a limited extent.
Test drive	No test drive/shunting maneuver was carried out during the inspection of the vehicle.
Engine function test	An engine test run was performed.
readiness to drive	The vehicle was roadworthy at the time of inspection.

Value reducing factors

No.	Component group	Description
1	Misc.	Main inspection - No evidence - No deduction
2	Wheel / tyres	Alloy rim - rear right side (kein Bestandteil der Ausstattung) - Scratch(es) - No deduction
3	Wheel / tyres	Alloy rim - front right side (kein Bestandteil der Ausstattung) - Scratch(es) - No deduction
4	Wheel / tyres	Tyre - front right side (kein Bestandteil der Ausstattung) - Porous / cracked - No deduction
5	Door - rear right side	Door - Dent / paintcoat damage - Smart repair
6	Side panel - rear right side	Side panel - dent(s) - Smart repair
7	Side panel - rear left side	Side panel - dent(s) - Smart repair
8	Seat - rear	Upholstery - Scratch(es) - Loss in value
9	Trim / covers	Door trim - front right side - Scratched - Loss in value
10	2nd wheel set	1 alloy rim - Scratch(es) - Replace
11	2nd wheel set	1 alloy rim - Scratch(es) - Replace
12	2nd wheel set	1 alloy rim - Scratch(es) - Replace
13	2nd wheel set	3 tyres - Broken / torn - Replace
14	Sill - left side	Sill - Deformed - Repair and paint
15	Steering system	Steering wheel (Airbag) - Porous / cracked - Replace
16	Vehicle glazing	Windscreen - Broken / torn - Replace
17	Front bumper	Front bumper - Scratched - Paint



Wear and tear

No.	Component group	Description
1	Trim / covers	Boot lid - interior trim - Scratch(es) - No deduction
2	2nd wheel set	2nd wheel set - Soiled - No deduction

The vehicle shows signs of wear and tear commensurate with its age and use.

Accident damages

No.	Accident
1	Rear

Order/Scope of Order

An order was placed to prepare a sales report for the described vehicle. This report includes the following:

- Description of key vehicle information
- Documentation of equipment features
(*Delivery by third-party service providers*)
- Documentation of damage, defects, missing parts
- Documentation of prior damage, unrepaired prior damage, repainting
- A brief visual or functional inspection of the equipment details, if possible.
(*Functional testing of driver assistance systems is not included in the scope of services!*)
- a photographic documentation of the vehicle

Basis for the order

This product is based on the guidelines for vehicle returns and valuations published by Alphabet Fleet GmbH. The expert makes the specific findings in each individual case objectively, within the framework of the prescribed standards, based on their own expertise.

The vehicle inspection takes place in a fully assembled, unassembled state.

Damage or defects that can only be detected during disassembly/diagnostic work or through further investigation remain within the realm of prognostic risk. An increased risk exists due to concealed defects caused by fraudulent misrepresentation and which were not identifiable by the expert.

Damage or defects resulting from normal use or wear and tear of the vehicle will be accepted in accordance with the applicable standard.

There was no explicit identification or monetary consideration of the expected features within the product.

Features which, in their nature and extent, slightly exceed normal use but do not constitute unacceptable damage, will be documented and indicated as signs of wear, if applicable.

Damage or defects that, according to the applicable standard, can no longer be attributed to normal use or wear and tear are listed under "Value Reducing Factors" in the product description.

Depending on the product specification, a monetary ID can be provided. If this takes place, the costs can be 100% or pro rata depending on the vehicle's age and mileage.

Previous damages

Non-repaired previous damages were found at the vehicle. The necessary repair costs are listed in the expert report or if necessary, are listed in detail in a separately enclosed repair cost calculation.

Comments

- Der Winterradsatz ist kein Bestandteil der Ausstattungsliste.

- Das Fahrzeug befand sich zum Zeitpunkt der Besichtigung in einem beschädigten, nicht demontierten Zustand. Eine Schaden- bzw. Kostenausweitung nach erfolgter Demontage kann nicht ausgeschlossen werden.



Figure 1: Diagonal front (left)



Figure 2: Diagonal front (right)



Figure 3: Diagonal rear (left)



Figure 4: Diagonal rear (right)



Figure 5: Interior - front



Figure 6: Interior - rear



Figure 7: Instrument cluster



Figure 8: Instrument panel



Figure 9: Interior 360° view



Figure 10: Cargo area



Figure 11: VIN



Figure 12: Mounted tyres

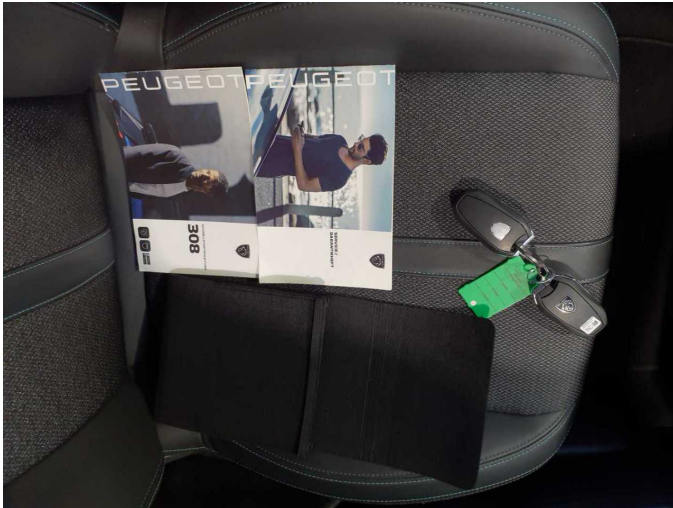


Figure 13: Documents



Figure 14: Additional tyres



Figure 15: Additional tyres

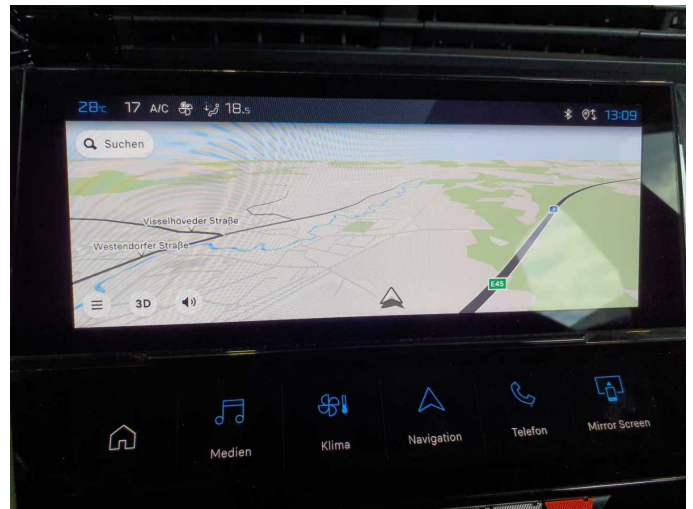


Figure 16: Navigation

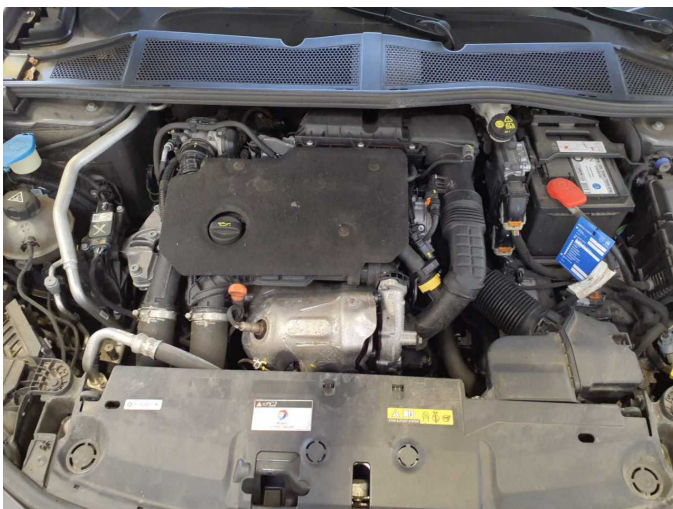


Figure 17: Misc.

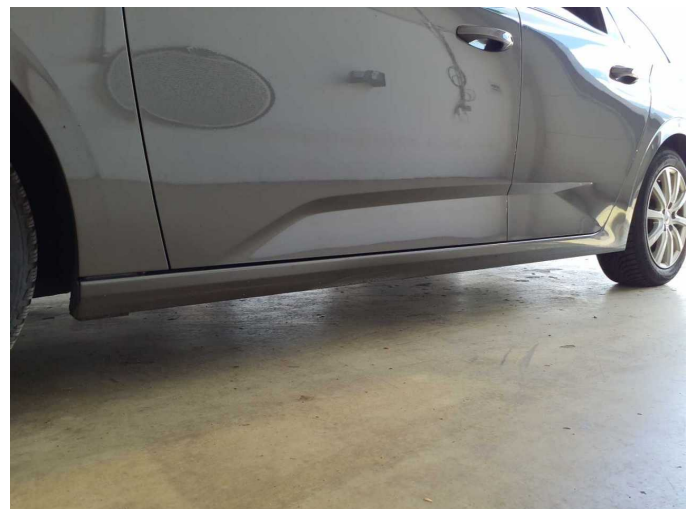


Figure 18: Misc.



Figure 19: Misc.



Figure 20: Misc.



Figure 21: Misc.



Figure 22: Misc.



Damage 2: Wheel / tyres: Alloy rim - rear right side (kein Bestandteil der Ausstattung) - Scratch(es) - No deduction



Damage 2: Wheel / tyres: Alloy rim - rear right side (kein Bestandteil der Ausstattung) - Scratch(es) - No deduction



Damage 3: Wheel / tyres: Alloy rim - front right side (kein Bestandteil der Ausstattung) - Scratch(es) - No deduction



Damage 3: Wheel / tyres: Alloy rim - front right side (kein Bestandteil der Ausstattung) - Scratch(es) - No deduction



Damage 3: Wheel / tyres: Alloy rim - front right side (kein Bestandteil der Ausstattung) - Scratch(es) - No deduction



Damage 3: Wheel / tyres: Alloy rim - front right side (kein Bestandteil der Ausstattung) - Scratch(es) - No deduction



Damage 4: Wheel / tyres: Tyre - front right side (kein Bestandteil der Ausstattung) - Porous / cracked - No deduction



Damage 4: Wheel / tyres: Tyre - front right side (kein Bestandteil der Ausstattung) - Porous / cracked - No deduction



Damage 4: Wheel / tyres: Tyre - front right side (kein Bestandteil der Ausstattung) - Porous / cracked - No deduction



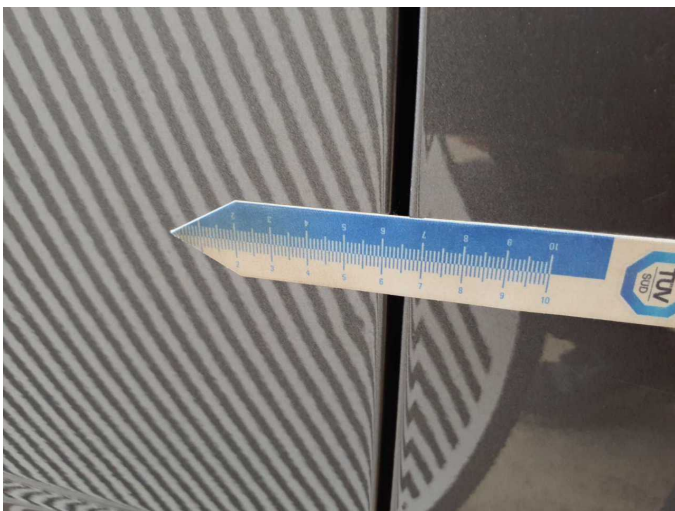
Damage 5: Door - rear right side: Door - Dent / paintcoat damage - Smart repair



Damage 5: Door - rear right side: Door - Dent / paintcoat damage - Smart repair



Damage 5: Door - rear right side: Door - Dent / paintcoat damage - Smart repair



Damage 5: Door - rear right side: Door - Dent / paintcoat damage - Smart repair



Damage 6: Side panel - rear right side: Side panel - dent(s) - Smart repair



Damage 6: Side panel - rear right side: Side panel - dent(s) - Smart repair



Damage 6: Side panel - rear right side: Side panel - dent(s) - Smart repair



Damage 6: Side panel - rear right side: Side panel - dent(s) - Smart repair



Damage 6: Side panel - rear right side: Side panel - dent(s) - Smart repair



Damage 7: Side panel - rear left side: Side panel - dent(s) - Smart repair



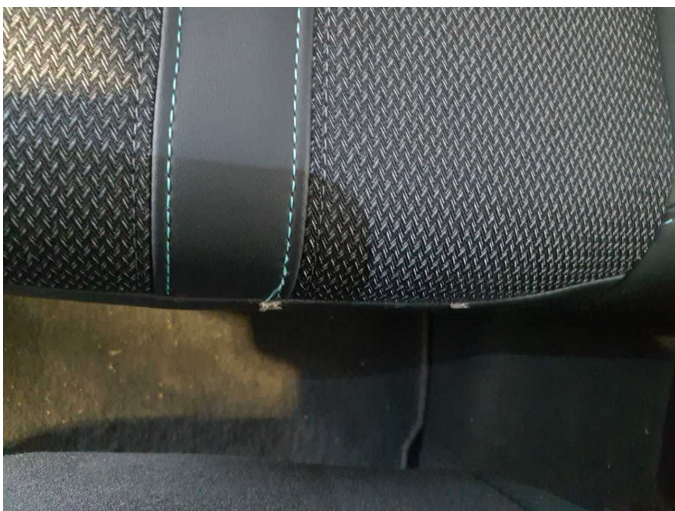
Damage 7: Side panel - rear left side: Side panel - dent(s) - Smart repair



Damage 7: Side panel - rear left side: Side panel - dent(s) - Smart repair



Damage 8: Seat - rear: Upholstery - Scratch(es) - Loss in value



Damage 8: Seat - rear: Upholstery - Scratch(es) - Loss in value



Damage 9: Trim / covers: Door trim - front right side - Scratched - Loss in value



Damage 9: Trim / covers: Door trim - front right side - Scratched - Loss in value



Damage 10: 2nd wheel set: 1 alloy rim - Scratch(es) - Replace



Damage 10: 2nd wheel set: 1 alloy rim - Scratch(es) - Replace



Damage 10: 2nd wheel set: 1 alloy rim - Scratch(es) - Replace



Damage 10: 2nd wheel set: 1 alloy rim - Scratch(es) - Replace



Damage 11: 2nd wheel set: 1 alloy rim - Scratch(es) - Replace



Damage 11: 2nd wheel set: 1 alloy rim - Scratch(es) - Replace



Damage 11: 2nd wheel set: 1 alloy rim - Scratch(es) - Replace



Damage 11: 2nd wheel set: 1 alloy rim - Scratch(es) - Replace



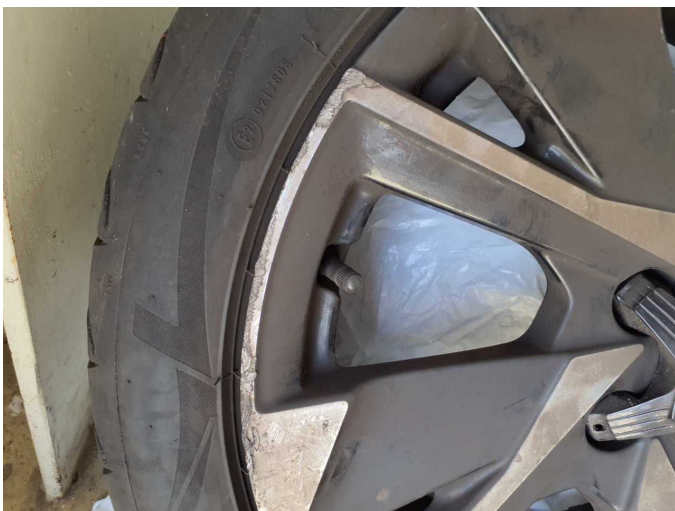
Damage 12: 2nd wheel set: 1 alloy rim - Scratch(es) - Replace



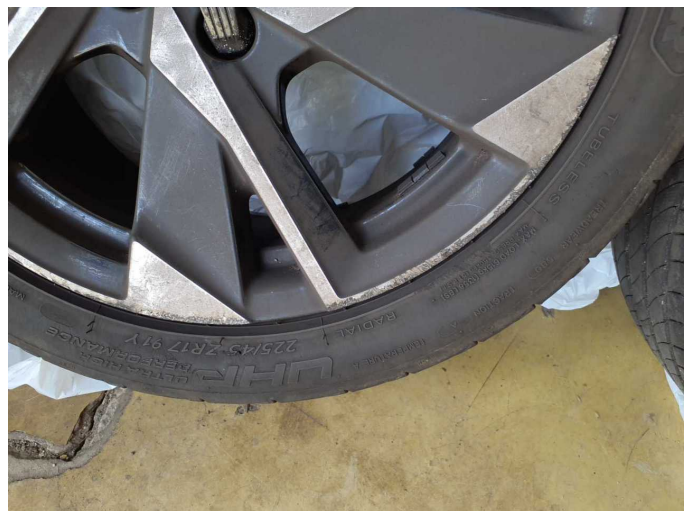
Damage 12: 2nd wheel set: 1 alloy rim - Scratch(es) - Replace



Damage 12: 2nd wheel set: 1 alloy rim - Scratch(es) - Replace



Damage 12: 2nd wheel set: 1 alloy rim - Scratch(es) - Replace



Damage 12: 2nd wheel set: 1 alloy rim - Scratch(es) - Replace



Damage 13: 2nd wheel set: 3 tyres - Broken / torn - Replace



Damage 13: 2nd wheel set: 3 tyres - Broken / torn - Replace



Damage 13: 2nd wheel set: 3 tyres - Broken / torn - Replace



Damage 13: 2nd wheel set: 3 tyres - Broken / torn - Replace



Damage 13: 2nd wheel set: 3 tyres - Broken / torn - Replace



Damage 13: 2nd wheel set: 3 tyres - Broken / torn - Replace



Damage 13: 2nd wheel set: 3 tyres - Broken / torn - Replace



Damage 13: 2nd wheel set: 3 tyres - Broken / torn - Replace



Damage 13: 2nd wheel set: 3 tyres - Broken / torn - Replace



Damage 13: 2nd wheel set: 3 tyres - Broken / torn - Replace



Damage 14: Sill - left side: Sill - Deformed - Repair and paint



Damage 14: Sill - left side: Sill - Deformed - Repair and paint



Damage 14: Sill - left side: Sill - Deformed - Repair and paint



Damage 14: Sill - left side: Sill - Deformed - Repair and paint



Damage 15: Steering system: Steering wheel (Airbag) - Porous / cracked - Replace



Damage 15: Steering system: Steering wheel (Airbag) - Porous / cracked - Replace



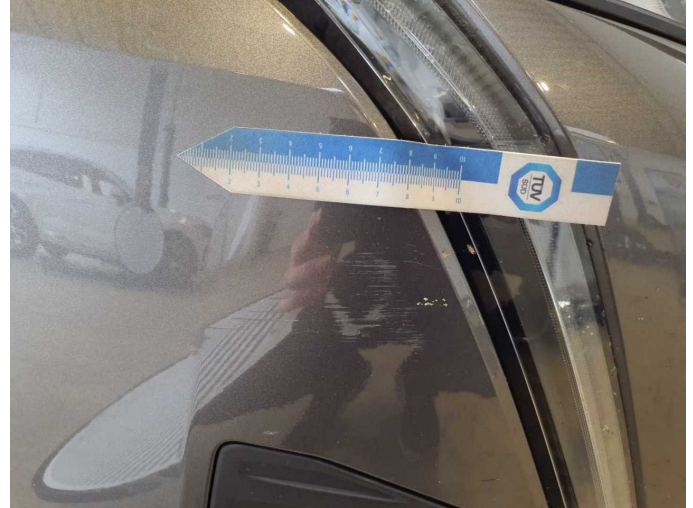
Damage 16: Vehicle glazing: Windscreen - Broken / torn - Replace



Damage 16: Vehicle glazing: Windscreen - Broken / torn - Replace



Damage 17: Front bumper: Front bumper - Scratched - Paint



Damage 17: Front bumper: Front bumper - Scratched - Paint



Damage 17: Front bumper: Front bumper - Scratched - Paint



Damage 17: Front bumper: Front bumper - Scratched - Paint



Accident 1: Rear



Accident 1: Rear



Accident 1: Rear



Accident 1: Rear



Accident 1: Rear



Accident 1: Rear



Accident 1: Rear



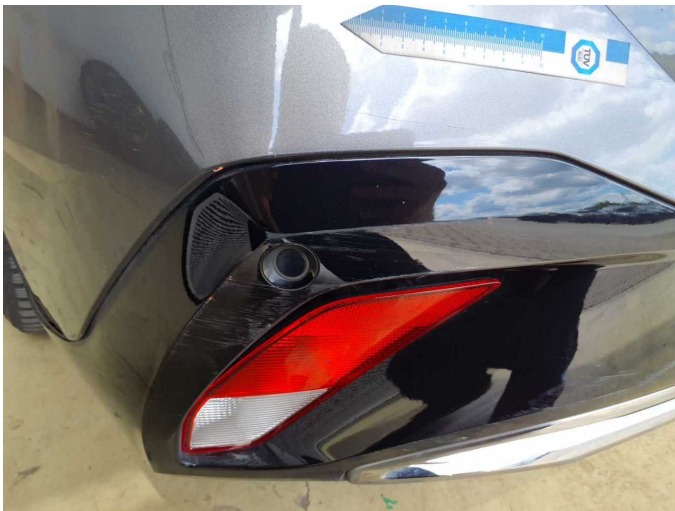
Accident 1: Rear



Accident 1: Rear



Accident 1: Rear



Accident 1: Rear



Accident 1: Rear