

MYVA

Tesla Model 3 '18 BEV

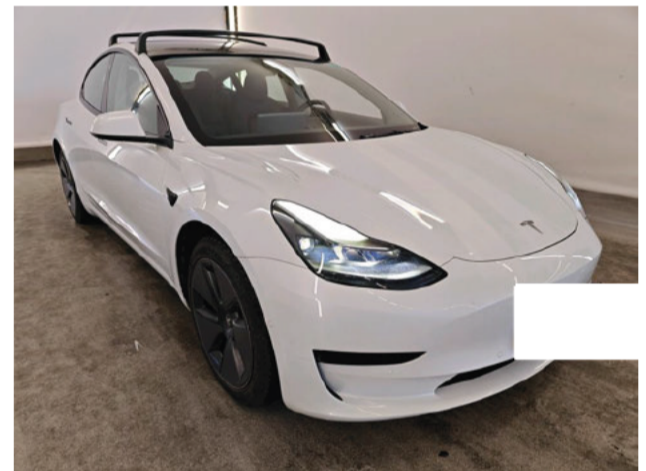
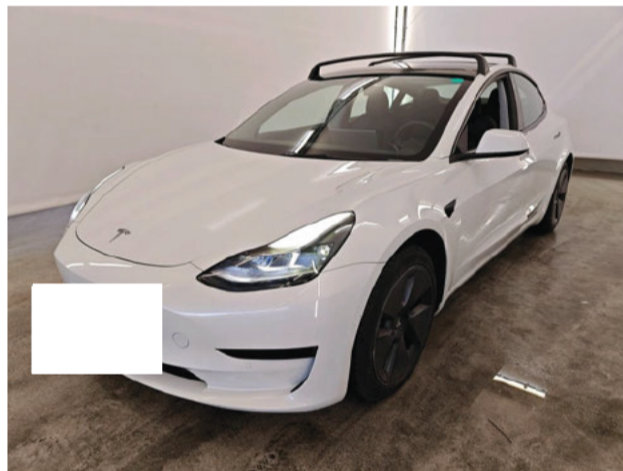
Vehicle information

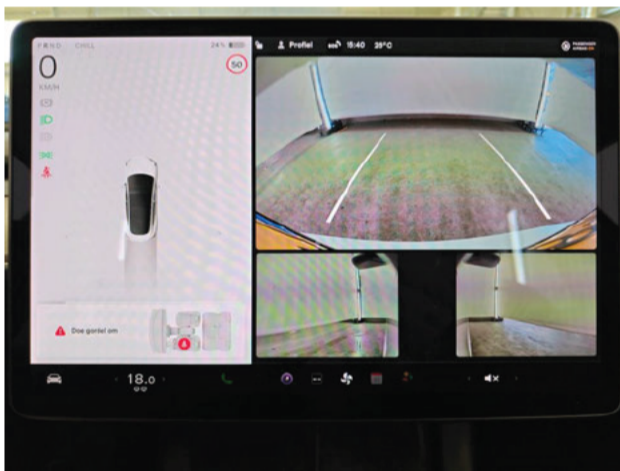
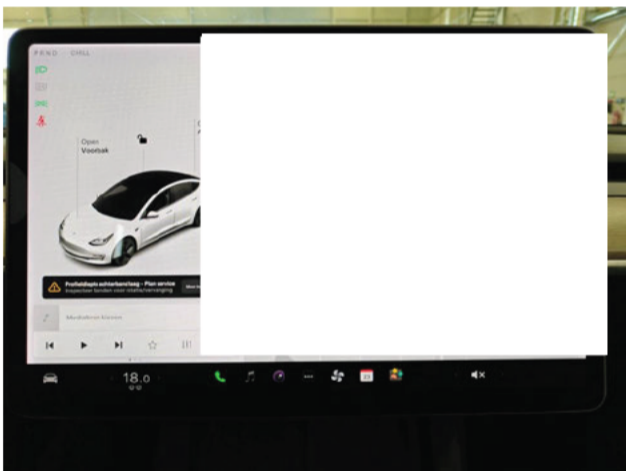
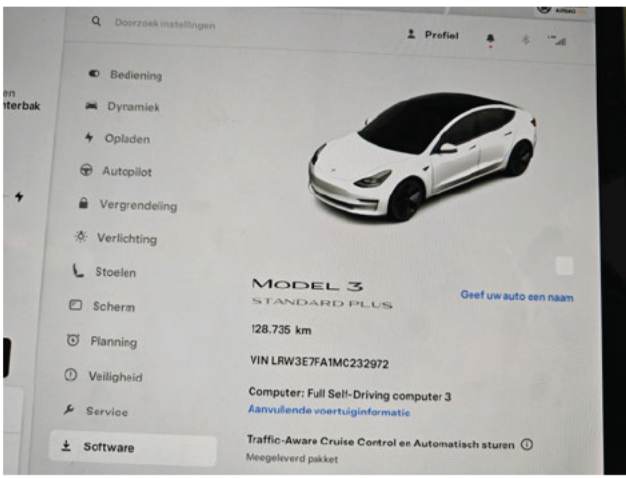
Make:	Tesla	License:	
Gearbox:	Automatic	Body color:	
Model:	Model 3 '18 BEV	VIN:	LRW3E7FA1MC232972
Fuel type:	Electric	Power:	225 kW
Version:	Model 3 50KWh RWD Stand.Range+	First registration	17/06/2021
Mileage:	128735 km	N° of doors:	

Damage summary

Front	①
Left	③
Rear	②
Right	④

Commercial pictures





Batterijcertificaat

Datum van diagnose: 23/06/2026

89%

Status van de gezondheid (SOH)*

Tesla Model 3 Standard Range Plus (RWD)

VIN : LRW3E7FA1MC232972

Kilometerstand : 128.735 km

*SOH berekend op basis van fabrieksgegevens, informatie om rekening mee te houden voor de fabrieksgarantie

Raadpleeg het Moba-certificaat door deze QR-code te scannen

Meer weten over: www.get-moba.com

CARA



Options according to the inspector

Central consol F	Yes GPS	Yes Headlights Xenon/LED/Laser	Yes
Panoramic roof	Yes Radio multimedia	Yes Telephone equipment	Yes

Damages

Alloy rim FL

Scratch(es)

Repair and paint (complete)

Left

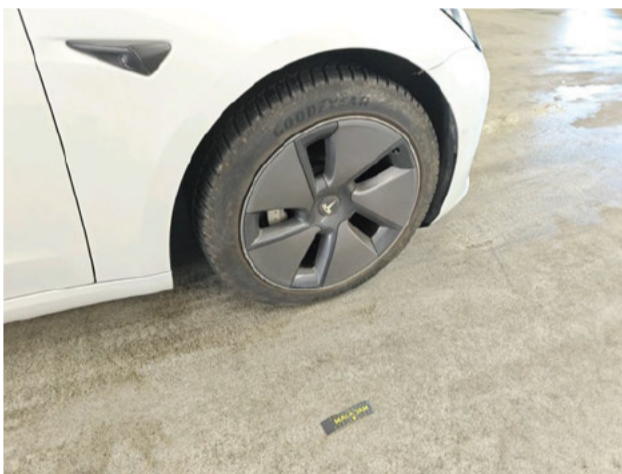


Alloy rim FR

Scratch(es)

Repair and paint (complete)

Right



Alloy rim RL

Scratch(es)

Repair and paint (complete)

Left



Alloy rim RR

Scratch(es)

Repair and paint (complete)

Right



Boot lid covering R

Scratch(es)
Smart repair
Rear



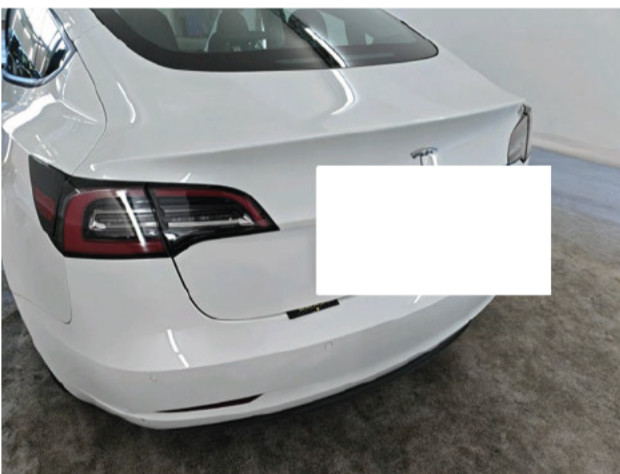
Bumper F

Scratch(es)
Repair and paint (complete)
Front



Bumper R

Scratch(es)
Repair and paint (complete)
Rear



Door FL

Dent(s)

Repair and paint (complete)

Left

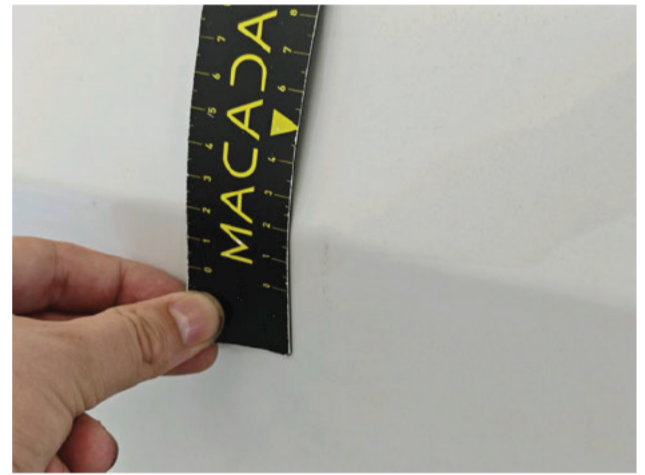


Door FR

Dent(s) and scratch(es)

Repair and paint (complete)

Right



Roof pillar R

Dent(s)

Repair and paint (complete)

Right



Tyres

Front Left

Winter

235/45/18/98/V

Goodyear

7.3 mm

Front Right

Winter

235/45/18/98/V

Goodyear

7.3 mm

Rear Left

Winter

235/45/18/98/V

Goodyear

5.8 mm

Rear Right

Winter

235/45/18/98/V

Goodyear

5.8 mm

Checks

Certificate of Conformity	No CO2 Emission	0
Digital maintenance	Yes GPS storage	Yes
GPS storage	HD Luggage cover	N/A
Number head rests	1 Number of charging cables (rapid charge)	1
Number of keys total	1 Service book	N/A
User's manual	Yes	

Information on the content and the scope of the inspection report:

- The assessment is based on the sales standards specified by the customer.
- Acceptable usage damages according to the sales standards are not always documented in this status report.
- The specified repair methods and/or resulting repair times have been determined, taking into account modern industrial repair methods.
- The purchasing dealer should assess individual repair costs.
- The inspection was carried out in a non disassembly condition. Macadam cannot be held responsible for any missing information. For further information, please contact the seller.