

## Expertise

Protocol number: 46199646  
Order No. / Reference: 26154059  
Inspection date: 16 Jun 2026

Manufacturer: Mercedes-Benz

Model: Vito 116 CDI Tourer Lang Aut. PRO

VIN: W1VVLFEZ9T4555834



### Vehicle details

#### Manufacturer / Type / Model / Equipment

Mercedes-Benz Vito 116 CDI Tourer Lang Aut. PRO

**Vehicle Identification number** W1VVLFEZ9T4555834

**Mileage (Read)** 20,904 km

**First registration** 12 Aug 2025

**Number of holders** 1

**Power / Engine displacement** 120 kw / 1,950 ccm

**Fuel type / Cylinder** Diesel / 4

**Gearbox / Number of gears** Automatic / 9

**Type of drive** Rear drive

**Type of vehicle** Van

**Colour / colour code** Hightechsilber Metallic

**Doors / Seats** 5 / 8

**Upholstery type** Cloth

**Colour of upholstery** Black

**Type of use** rental car



## Vehicle details

<b>Maintenance booklet / proof</b>	digital proof / complete	<b>Next maintenance in</b>	417 Tag(e)
<b>Key is / should be</b>	2 / 2	<b>FZG documents</b>	ZB#2 (B) was available (copy), ZB#1 (S) was not available.
		<b>Letter No.</b>	HN433647
<b>Previous damage / Accident</b>	None detectable	<b>Repainting</b>	None detectable
<b>Inspection conditions</b>	sufficient	<b>Lifting equipment / pit</b>	yes
<b>Test drive</b>	Not performed	<b>Engine function test</b>	Performed
<b>Manufacturer key number/ type code number</b>	2222 / ABB 06906		
<b>Emission standard</b>	EURO6;WLTP;EB;PI/CI;M, N1, N2	<b>fine dust sticker</b>	
<b>Permitted total weight</b>	3,100 kg	<b>Empty weight</b>	

## Tyres

### Mounted tyres

#	Tyre size	Type of tyre	Manufacturer	Tread depth
1)	245/45 R18 100V	Winter tyres on Light alloy	Michelin	7mm / 7mm
2)	245/45 R18 100V	Winter tyres on Light alloy	Michelin	6mm / 6mm

**Legend: Tread depth information for the left tire is listed first, for the right tire it is listed second on the axle in the direction of travel.**

TÜV SÜD Auto Partner GmbH  
Wiesenring 2  
04159 Leipzig

Inspection location  
ARS Altmann AG Automobillogistik  
Lilienthalstraße 2  
29693 Hodenhagen



## Equipment



## Standard equipment

- ABS, ESP, ASR, EBV, BAS (Anti-lock Braking System (ABS) - Electronic Stability Program (ESP) - Traction Control (ASR) - Electronic Brakeforce Distribution (EBV) - Brake Assist (BAS))
- Airbag: Thorax-pelvis-sidebag for driver
- Airbag: Windowbag for driver and front passenger
- ATTENTION ASSIST (ATTENTION ASSIST can assist the driver on long, monotonous journeys by monitoring attention. If signs of fatigue or increasing inattention are detected, it suggests a break.)
- Brake assist, active
- Brake lights, adaptive
- Front cupholder
- Diesel particulate filter and SCR
- Entry grab handle for the cargo area sliding door
- Misfueling protection
- Window in rear door/tailgate (with wiper/washer system)
- Front left window fixed in SW/ cargo area sliding door
- Electric window regulator driver/passenger (with anti-pinch protection, quick lowering and raising)
- Speed limit 210 km/h
- Transmission: 9G-TRONIC
- Seatbelt warning device for front passenger seat
- Seatbelt warning device for driver's seat
- Grab handle in the rear
- Lockable glove box
- HOLD function
- Interior lights in the rear
- Interior mirror (rearview mirror)
- Intelligent speed assistant
- Child safety locks on doors in the passenger compartment
- Comfort closing (comfort opening and closing of windows)
- Headrests (2), front
- leather steering wheel
- Steering wheel: Multifunction steering wheel
- Mercedes-Benz emergency call system
- Navigation: Navigation pre-installation
- Package: BlueEFFICIENCY (Efficiency Package)
- Upholstery: Caluma fabric, black
- Radio: MBUX multimedia system (high-resolution 10.25-inch touchscreen, Bluetooth interface with hands-free function, USB-C port, digital radio (DAB), setup of up to 7 profiles via Mercedes me, voice assistant with seat-specific voice recognition, technical requirements for over-the-air updates, satellite view, social navigation, dynamic offboard routing\* (additional route alternatives), online music)
- Sliding door on the right, cargo/passenger compartment
- electromechanical power steering
- Seats: Passenger seat cushion depth adjustment
- Seats: Driver's seat cushion depth adjustment
- 12V socket
- Ambient lighting tailgate
- Screw-in towing eye front/rear
- Passenger side airbag
- Driver's side airbag
- Airbag: Thorax airbag - Pelvis side airbag for front passenger
- Active Lane Keeping Assist
- Increased load capacity to 3,100 kg
- Outdoor temperature display
- Fixing points in the roof frame
- Hill start assist
- third brake light
- COC documents
- Roof cladding
- Electronic tachometer
- Driving light assistant (automatically switching on driving lights)
- Left/right window in SW/ Cargo area sliding door
- Front right window fixed in SW/ cargo area sliding door
- electric parking brake
- Generator management (Generator management helps reduce fuel consumption and CO2 emissions. The generator is switched off and the vehicle's electrical system is powered by the battery when it is sufficiently charged. This relieves the engine of the burden of charging the battery, for example, during acceleration. - When braking and during coasting downhill, the generator is switched on and the vehicle's kinetic energy is recuperated to charge the battery.)
- Interior trim, high-end finish
- Passive child detection in the vehicle
- Instrument cluster with color display
- Communication module (LTE) for digital services
- Large fuel tank, approx. 70 liters
- Steering wheel adjustable for tilt and height
- Headlight range control
- Navigation accessories: Live Traffic Information
- Package: Aerodynamics
- Breakdown management
- Radio: Digital Radio DAB
- Radio accessories: 2-way speakers front + rear.
- Full wheel cover
- Tires: Tires without specified make
- Tires: Premium protection tires (3 years)
- Tire pressure monitoring (on front and rear axles (wireless))
- Wheels: Premium complete wheel protection (3 years)
- Sliding door: Active stop
- Crosswind Assist
- Seats: Rear seat mounting with quick-release fasteners, 2 rows of seats
- Start-stop function
- Blind Spot Assist
- Ambient lighting in the exterior mirrors
- First aid kit
- Warm air duct to the passenger compartment



- Updates to the intelligent speed assistant
- Pre-installation for Remote Services Plus
- Warning triangle
- Immobiliser
- Central locking with radio remote control
- Car registration

### Extra equipment

- Distance Assist DISTRONIC active (automatic transmission) (including HOLD function)
- Towing capacity 2500 kg
- Towbar (detachable ball head)
- Comfort roof control unit
- Enhanced automatic restart on highways
- All-weather floor mats
- Semi-automatic air conditioning, TEMPATIC in the rear
- Paint finish: Metallic
- Navigation
- Package: Driver Assistance Package
- Package: Parking package with reversing camera
- Package: Smartphone Integration Package
- Package: Mirrors (automatically dimming interior mirror - automatically dimming exterior mirror - electrically folding exterior mirrors)
- Tires: 245/45 R 18
- Tires: Comfort tires
- Rear door: Rear swing doors, opening to side wall
- Sliding door on the left (cargo area)
- Seat: Lumbar support driver's seat
- Seats: Passenger compartment 1st row, 3-seater bench / Comfort (outer seat foldable)
- Seats: Comfort passenger seat
- Bumpers painted in body color
- Traffic Sign Assistant

- ASSYST maintenance interval indicator
- Heat-insulating glass
- Auxiliary heater, electric

- Active Speed Limit Assist
- Active Steering Assist (Active Emergency Stop Assist - Emergency Lane Function)
- Tinted rear windows, black glass
- Roof rails (instead of C-rails)
- Chassis: Standard chassis Plus
- Rear camera not foldable
- chrome-plated radiator grille
- Multibeam LED with High Beam Assist PLUS
- Package: Chrome Interior Package (chrome trim: in instrument panel and door trim, air vents, climate control elements, door control panel surround, center console in gloss black)
- Package: Winter Package (heated windscreen - heated seats for driver and front passenger - pockets on driver and front passenger seatbacks - heated multifunction steering wheel)
- Wheels: Alloy wheels 7.5 J x 18, 10-spoke design
- Electric suction fan, power level 5
- Seat: Lumbar support, passenger seat
- Seats: 3-seat rail system (with quick-release mechanism)
- Seats: Passenger compartment 2nd row, 3-seater bench / Comfort (outer seat foldable)
- Seats: Comfort driver's seat
- Route-based speed adjustment
- Auxiliary heating (hot water)

### Brief expert findings

Documents submitted	At the time of the inspection, the vehicle registration certificate Part 2 (title) was available, but the vehicle registration certificate Part 1 (document) was not. (Copy)
VIN comparison	The vehicle identification number (VIN) was read from the vehicle and its conformity with the submitted documents was confirmed by the undersigned during the inspection.
Inspection	The inspection conditions were sufficient for the assessment of the vehicle. Lifting equipment and/or a pit were available for examining the vehicle.
Test drive	No test drive/shunting maneuver was carried out during the inspection of the vehicle.
Engine function test	An engine test run was performed.



## Value reducing factors

No.	Component group	Description
1	Roof	Roof - dent(s) - Smooth repair work
2	Rear bumper	Cap (Ausschnitt Anhängerkupplung) - Missing - Replace
3	Wheel / tyres	Alloy rim - front right side - Scratch(es) - Replace
4	Vehicle glazing	Windscreen (+ Steinschläge) - Scratch(es) - Replace
5	Front bumper	Front bumper - Broken / torn - Replace
6	Headlight	Headlight - left side (+ rechts) - Missing - Replace

## Wear and tear

No.	Component group	Description
1	Bonnet	Bonnet - Stone chips - No deduction
2	Wing mirror - right side	Cap - Scratch(es) - No deduction
3	Door - front right side	Door - dent(s) - No deduction

The vehicle shows signs of wear and tear commensurate with its age and use.

## Paint coat thickness measurement

Roof	99 µm	Roof rail - left side	105 µm
Roof rail - right side	102 µm	Boot lid / rear door	110 µm
Mudguard - left side	99 µm	Mudguard - right side	98 µm
Bonnet	96 µm	Side panel - rear left side	95 µm
Side panel - rear right side	106 µm	Door - rear left side	96 µm
Door - rear right side	98 µm	Door - front left side	98 µm
Door - front right side	89 µm		

## Order/Scope of Order

An order was placed to prepare a sales report for the described vehicle. This report includes the following:

- Description of key vehicle information
- Documentation of equipment features  
(*Delivery by third-party service providers*)
- Documentation of damage, defects, missing parts
- Documentation of prior damage, unrepaired prior damage, repainting
- A brief visual or functional inspection of the equipment details, if possible.  
(*Functional testing of driver assistance systems is not included in the scope of services!*)
- a photographic documentation of the vehicle



## Basis for the order

This product is based on the guidelines for vehicle returns and valuations of light commercial vehicles published by Alphabet Fleet Management GmbH. The expert makes the specific findings in each individual case objectively, within the framework of the prescribed standards, based on their own expertise.

The vehicle inspection takes place in a fully assembled, unassembled state.

Damage or defects that can only be detected during disassembly/diagnostic work or through further investigation remain within the realm of prognostic risk. An increased risk exists due to concealed defects caused by fraudulent misrepresentation and which were not identifiable by the expert.

Damage or defects resulting from normal use or wear and tear of the vehicle will be accepted in accordance with the applicable standard.

There was no explicit identification or monetary consideration of the expected features within the product.

Features which, in their nature and extent, slightly exceed normal use but do not constitute unacceptable damage, will be documented and indicated as signs of wear, if applicable.

Damage or defects that, according to the applicable standard, can no longer be attributed to normal use or wear and tear are listed under "Value Reducing Factors" in the product description.

Depending on the product specification, a monetary ID can be provided. If this takes place, the costs can be 100% d or pro rata depending on the vehicle's age and mileage.

## Previous damages

No apparent prior damage that had been repaired could be found on the vehicle.



Figure 1: Diagonal front (left)



Figure 2: Diagonal front (right)



Figure 3: Diagonal rear (left)



Figure 4: Diagonal rear (right)

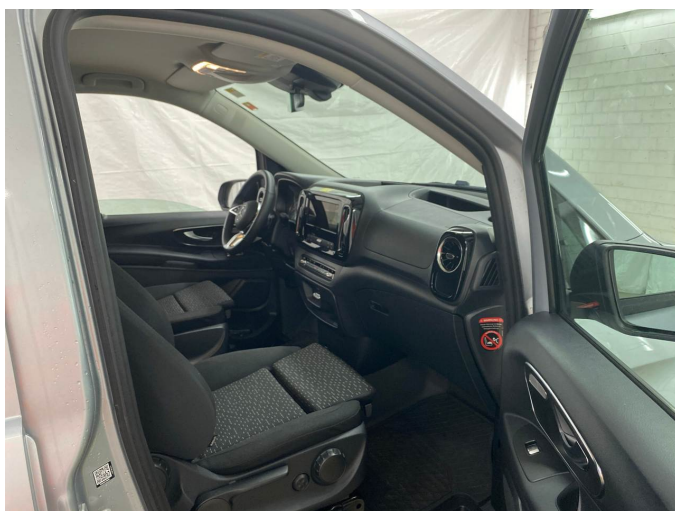


Figure 5: Interior - front



Figure 6: Interior - rear



Figure 7: Instrument cluster



Figure 8: Instrument panel



Figure 9: Interior 360° view



Figure 10: Cargo area



Figure 11: VIN



Figure 12: Mounted tyres



Figure 13: Documents



Figure 14: Navigation

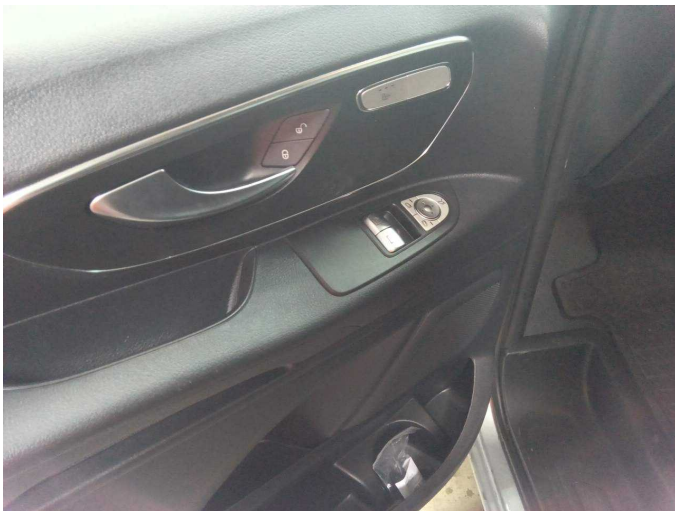


Figure 15: Misc.



Figure 16: Misc.

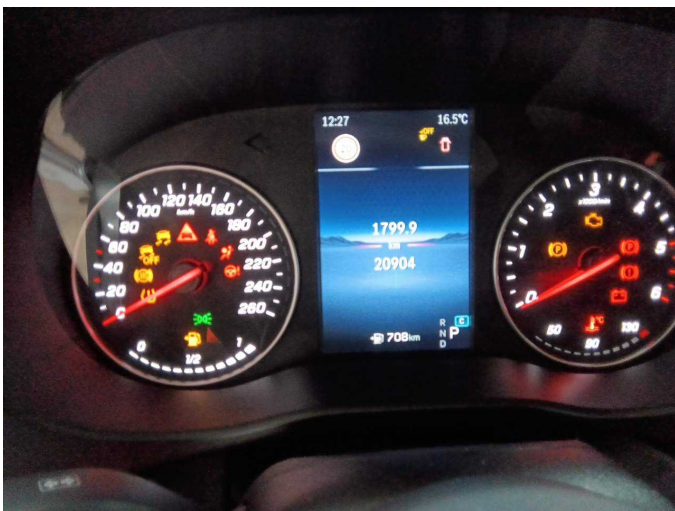


Figure 17: Misc.



Figure 18: Misc.



Figure 19: Misc.



Figure 20: Misc.



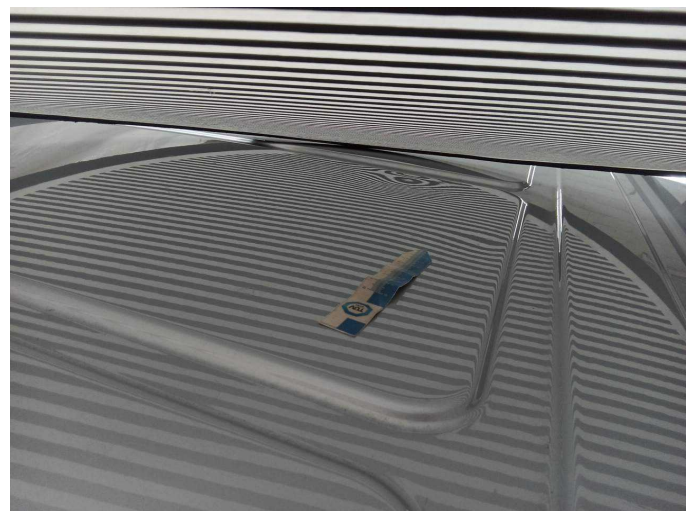
Figure 21: Misc.



Figure 22: Misc.



Damage 1: Roof: Roof - dent(s) - Smooth repair work



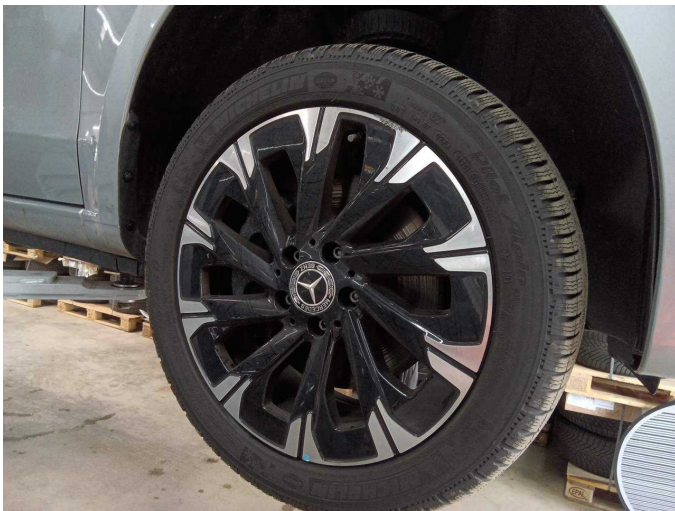
Damage 1: Roof: Roof - dent(s) - Smooth repair work



**Damage 2:** Rear bumper: Cap (Ausschnitt Anhängerkupplung) - Missing - Replace



**Damage 2:** Rear bumper: Cap (Ausschnitt Anhängerkupplung) - Missing - Replace



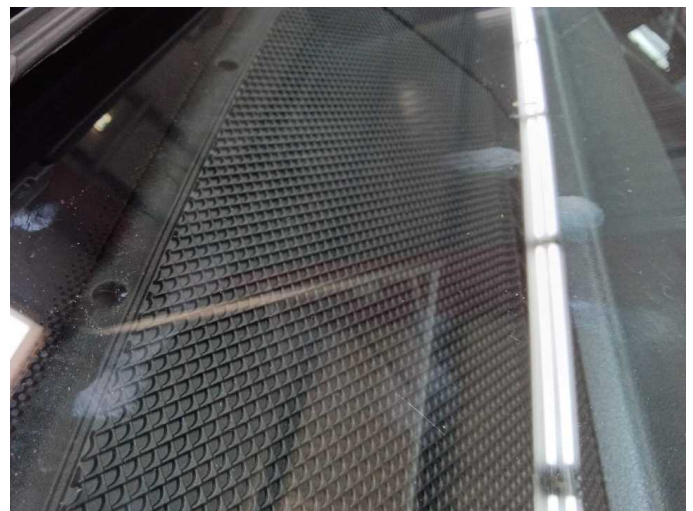
**Damage 3:** Wheel / tyres: Alloy rim - front right side - Scratch(es) - Replace



**Damage 3:** Wheel / tyres: Alloy rim - front right side - Scratch(es) - Replace



**Damage 4:** Vehicle glazing: Windscreen (+ Steinschläge) - Scratch(es) - Replace



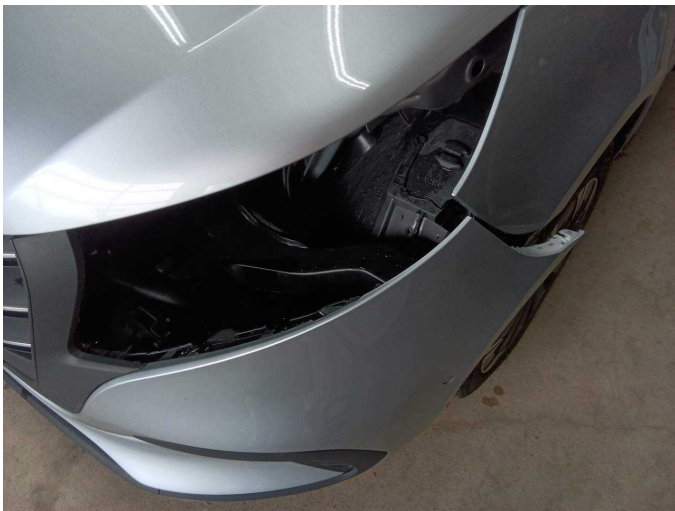
**Damage 4:** Vehicle glazing: Windscreen (+ Steinschläge) - Scratch(es) - Replace



**Damage 4:** Vehicle glazing: Windscreen (+ Steinschläge) - Scratch(es) - Replace



**Damage 5:** Front bumper: Front bumper - Broken / torn - Replace



**Damage 5:** Front bumper: Front bumper - Broken / torn - Replace



**Damage 6:** Headlight: Headlight - left side (+ rechts) - Missing - Replace



**Damage 6:** Headlight: Headlight - left side (+ rechts) - Missing - Replace

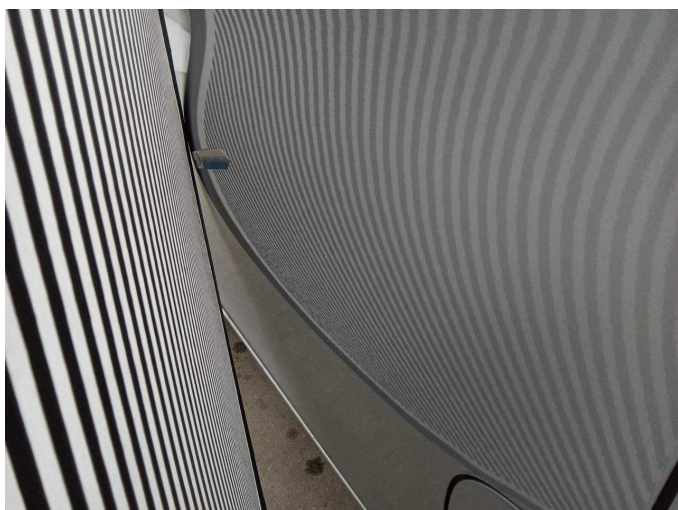


**Damage 6:** Headlight: Headlight - left side (+ rechts) - Missing - Replace



**Damage 6:** Headlight: Headlight - left side (+ rechts) - Missing - Replace

**Wear and tear 3:** Door - front right side: Door - dent(s) - No deduction



**Wear and tear 3:** Door - front right side: Door - dent(s) - No deduction