

Expertise

Protocol number: 45526074
Order No. / Reference: 26200711
Inspection date: 6 May 2026

Manufacturer: Volkswagen

Model: Caddy 2.0 TDI BMT (5-Si.) DSG Caddy

VIN: WV2ZZZSKZMX015509



Vehicle details

Manufacturer / Type / Model / Equipment

Volkswagen Caddy 2.0 TDI BMT (5-Si.) DSG Caddy

Vehicle Identification number WV2ZZZSKZMX015509

Mileage (Read) 44,212 km

First registration 27 Jan 2021

Number of holders 1

Power / Engine displacement 90 kw / 1,968 ccm

Fuel type / Cylinder Diesel / 4

Gearbox / Number of gears Automatic / 7

Type of drive Front drive

Type of vehicle Van

Colour / colour code Candy-Weiß

Doors / Seats 5 / 5

Upholstery type Cloth

Colour of upholstery Black-Grey

readiness to drive Roadworthy



Vehicle details

Maintenance booklet / proof	digital proof / complete	Next maintenance in	24,500 km
Last service on / at	06/2025 at 39,543 km		
Key is / should be	2 / 2	FZG documents	ZB#2 (B) was available (copy), ZB#1 (S) was not available.
		Letter No.	GH701436
Previous damage / Accident	None detectable	Repainting	None detectable
Inspection conditions	sufficient	Lifting equipment / pit	yes
Test drive	Not performed	Engine function test	Performed
readiness to drive	Roadworthy		
Manufacturer key number/ type code number	0603 / CLH 00010		
Emission standard	EURO6;WLTP;AP;PI/CI; M, N1 I	fine dust sticker	
Permitted total weight	2,250 kg	Empty weight	

Tyres

Mounted tyres

#	Tyre size	Type of tyre	Manufacturer	Tread depth
1)	205/60 R16 92H	All-season tyres on Steel rim with wheel cover	Hankook	7mm / 7mm
2)	205/60 R16 96H	All-season tyres on Steel rim with wheel cover	Bridgestone	5mm / 5mm

Replacement

Typ	Tyre size	Type of tyre	Manufacturer	Tread depth
E	205/60 R16 96H	All-season tyres on Steel	Bridgestone	7 mm

Legend: Tread depth information for the left tire is listed first, for the right tire it is listed second on the axle in the direction of travel.

TÜV SÜD Auto Partner GmbH
Wiesenring 2
04159 Leipzig

Inspection location
Hartmann Fleet Professionals GmbH
Leerenstraße 25
29683 Bad Fallingbommel



Equipment



Standard equipment

- Storage compartments: Storage tray on the headliner with 2 roof grab handles in the driver's cab
- Airbag: Side and head airbags for driver and front passenger (head airbags for the outer rear seats - center airbag in the front)
- Reinforced battery (70 Ah/ 420 A)
- Operating voltage 12 V
- Brake booster
- third brake light
- Roof rail/roof rack preparation
- Electronic parking brake including auto-hold function
- Automatic headlight control with daytime running lights
- Windows: Heated rear window
- Window: Side window in the passenger/cargo compartment, rear left, permanently installed
- Window: Side window in the passenger/cargo compartment, front left, permanently installed
- Windows: Laminated glass front pane in heat-insulating glazing
- electric window regulator
- Cruise control system including speed limiter
- Halogen dual headlights-H7
- Glove compartment with lid, illuminated
- Rear window wiper/washer system with intermittent function
- Instrument cluster (km/h) (displays for speed, total/trip distance, engine speed, fuel level and time)
- Air conditioning
- Headrests (2), height adjustable
- Paint finish: Solid (Candy White)
- Steering wheel: Multifunction steering wheel in leather (DSG)
- Steering column adjustable in height and tilt
- Center console with 2 universal cup holders
- Multifunctional camera
- Fatigue detection
- Emergency braking assistant "Front Assist" (with pedestrian and cyclist detection)
- Upholstery: Fabric, "Double Grid" design
- Radio "Composition Audio" with 16.51 cm (6.5 inch) touch color display (4 speakers - mobile phone interface - 1 USB (Type C) interface)
- Wheels/Tires: Tire pressure monitoring system
- Wheels/Tires: Steel wheels 6.5J x 16, in black
- Gearshift DSG (with shift-by-wire technology)
- Sliding door, left side in the passenger/cargo area
- Keys for locking system: 2 remote control flip keys
- Speed-sensitive power steering (Servotronic)
- Seat belts: in the passenger compartment (with belt tensioners for the outer seats in the 2nd row)
- Driver's cab seats: Height adjustment for left seat, manual
- Seats: Seat left and right, in the 1st row
- Sun visors with mirrors, airbag label on passenger sun visor
- Lane keeping assistant "Lane Assist"
- Towing eye front and rear, screw-in
- Airbag for driver and front passenger (with passenger airbag deactivation)
- Electrically adjustable and heated exterior mirrors
- Exterior mirror housings in black, door handles in body color and sliding door rail in silver
- Floor coverings, carpeting in the driver's cab and passenger compartment (carpeting in the driver's cab and passenger compartment)
- Three-phase generator 140 A
- Electronic Stability Program with Brake Assist (including Anti-lock Braking System (ABS), Traction Control System (ASR), (EDS and MSR) - Evasive Steering Assist and Turn Assist)
- Window: Side window in the passenger/cargo compartment, rear right, permanently installed
- Window: Side window in the passenger/cargo compartment, front right, permanently installed
- Windows: Green heat-insulating glass
- Luggage compartment cover, extendable and removable
- Transmission: DSG (dual-clutch transmission), 7-speed automatic
- Tailgate with window cutout
- Interior lighting: in the passenger compartment (LED reading lights)
- Electric child safety lock for sliding doors
- Child seat anchorage (I-Size) and top tether (for seats in the passenger compartment (except the middle seat of the 2nd row))
- Paint protection/transport protection film (transport protection film (minimum protection) with additional transport protection measures)
- Headlight range control
- Multifunction display "Plus"
- Multi-collision brake
- Non-smoking version
- eCall emergency call system
- Particulate filter: Diesel particulate filter (incl. SCR and AdBlue tank)
- Radio accessories: Digital radio reception DAB+
- Wheels, tires: Wheel covers
- Wheels/Tires: 205/60 R 16 96 H XL, optimized for low rolling resistance
- reversing light
- Windscreen wiper intermittent control with light sensor
- Sliding door, on the right in the passenger/cargo area
- Side indicator lights
- Seat belts: Three-point automatic seat belts (front with belt height adjustment and electric belt tensioners)
- dimmable interior safety mirror
- Seats in the passenger compartment: 3-seater bench in the 2nd row (foldable, rollable and removable) (ISOFIX and Top Tether on outer seats in the passenger compartment - 3 rear headrests)
- Start-stop system (with brake energy recuperation)
- Bumper in grey
- First aid kit, warning triangle and high-visibility vest



- Power outlets: 12-volt socket in the cargo area
- Telephone: Mobile phone interface
- Lashing points: 4 lashing points for securing cargo
- Electronic immobilizer
- Registration as a passenger car

- Warning tone and light for unfastened front seat belts
- Central locking with remote control and interior operation
- Auxiliary heating: Electric auxiliary air heater

Extra equipment

- All-weather floor mats
- Exterior mirrors, electrically adjustable, heated and folding
- Parking assistance (rear parking distance control)
- Interior lighting: in the passenger compartment (LED reading lights - LED tailgate lighting)
- Air conditioning system "Air Care Climatronic" with 2-zone temperature control and air purification function
- Navigation system "Discover Media" (Caddy) (25.4 cm (10 inch) touch color display - streaming & internet - 6 speakers - 2 USB interfaces (Type C) in the center console, front)
- Package: Winter package (Seat heating for seats in the driver's cab, left and right, separately adjustable - Washer fluid level indicator with enlarged washer fluid reservoir - Heated windshield washer nozzles at the front)
- Wheels/Tires: Spare wheel in driving tire size, steel (spare wheel in driving tire size, steel - on-board tools and jack)
- Partition net: Luggage net in the cargo/passenger compartment

- Rigid towbar (including trailer stabilization)
- Roof rails, black
- Windows: Front side windows in heat-insulating glass (rear side windows and rear window tinted, 74% light-absorbing)
- Front center armrest (height and length adjustable with 2 cup holders in the front and 2 air vents in the rear)
- Fog lights including cornering lights
- Package: Light and Sight (Safety interior mirror, automatically dimming - Windscreen wiper interval control with light and rain sensor - Automatic headlight control, with daytime running lights and welcome and farewell lights)
- Wheels/Tires: All-season tires 205/60 R 16 96 H XL, optimized for low rolling resistance
- Rear View reversing camera
- 12-volt sockets in the instrument panel and in the cargo area
- Auxiliary water heater with timer and radio remote control

Brief expert findings

Documents submitted	At the time of the inspection, the vehicle registration certificate Part 2 (title) was available, but the vehicle registration certificate Part 1 (document) was not. (Copy)
VIN comparison	The vehicle identification number (VIN) was read from the vehicle and its conformity with the submitted documents was confirmed by the undersigned during the inspection.
Inspection	The inspection conditions were sufficient for the assessment of the vehicle. Lifting equipment and/or a pit were available for examining the vehicle.
Test drive	No test drive/shunting maneuver was carried out during the inspection of the vehicle.
Engine function test	An engine test run was performed.
readiness to drive	The vehicle was roadworthy at the time of inspection.

Value reducing factors

No.	Component group	Description
1	Instrument panel	Indicator light (Reifendruck) - on - Perform diagnosis
2	Wing mirror - left side	Cap - Scratch(es) - Paint

Wear and tear

No.	Component group	Description
1	Rear bumper	Rear bumper - Scratch(es) - No deduction

The vehicle shows signs of wear and tear commensurate with its age and use.



Order/Scope of Order

An order was placed to prepare a sales report for the described vehicle. This report includes the following:

- Description of key vehicle information
- Documentation of equipment features
(Delivery by third-party service providers)
- Documentation of damage, defects, missing parts
- Documentation of prior damage, unrepaired prior damage, repainting
- A brief visual or functional inspection of the equipment details, if possible.
(Functional testing of driver assistance systems is not included in the scope of services!)
- a photographic documentation of the vehicle

Basis for the order

This product is based on the guidelines for vehicle returns and valuations of light commercial vehicles published by Alphabet Fleet Management GmbH. The expert makes the specific findings in each individual case objectively, within the framework of the prescribed standards, based on their own expertise.

The vehicle inspection takes place in a fully assembled, unassembled state.

Damage or defects that can only be detected during disassembly/diagnostic work or through further investigation remain within the realm of prognostic risk. An increased risk exists due to concealed defects caused by fraudulent misrepresentation and which were not identifiable by the expert.

Damage or defects resulting from normal use or wear and tear of the vehicle will be accepted in accordance with the applicable standard.

There was no explicit identification or monetary consideration of the expected features within the product.

Features which, in their nature and extent, slightly exceed normal use but do not constitute unacceptable damage, will be documented and indicated as signs of wear, if applicable.

Damage or defects that, according to the applicable standard, can no longer be attributed to normal use or wear and tear are listed under "Value Reducing Factors" in the product description.

Depending on the product specification, a monetary ID can be provided. If this takes place, the costs can be 100% or pro rata depending on the vehicle's age and mileage.

Previous damages

No apparent prior damage that had been repaired could be found on the vehicle.



Figure 1: Diagonal front (left)



Figure 2: Diagonal front (right)



Figure 3: Diagonal rear (left)



Figure 4: Diagonal rear (right)



Figure 5: Interior - front

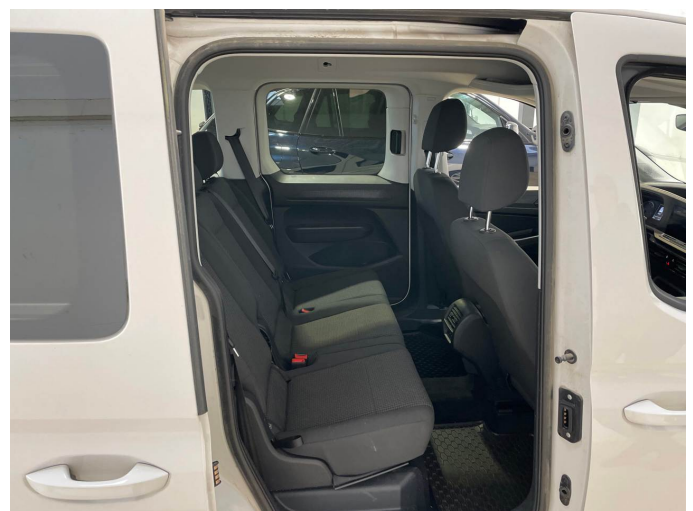


Figure 6: Interior - rear



Figure 7: Instrument cluster



Figure 8: Instrument panel



Figure 9: Interior 360° view



Figure 10: Cargo area

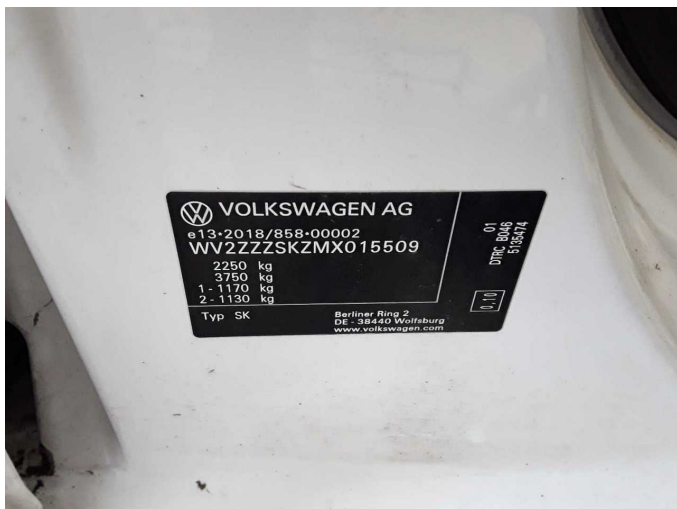


Figure 11: VIN



Figure 12: Mounted tyres

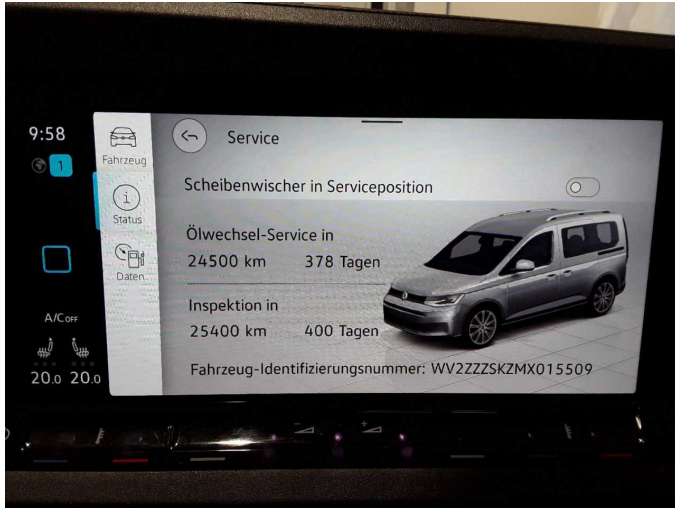


Figure 13: Documents



Figure 14: Documents



Figure 15: Documents



Figure 16: Navigation



Figure 17: Misc.



Figure 18: Misc.



Figure 19: Misc.



Figure 20: Misc.

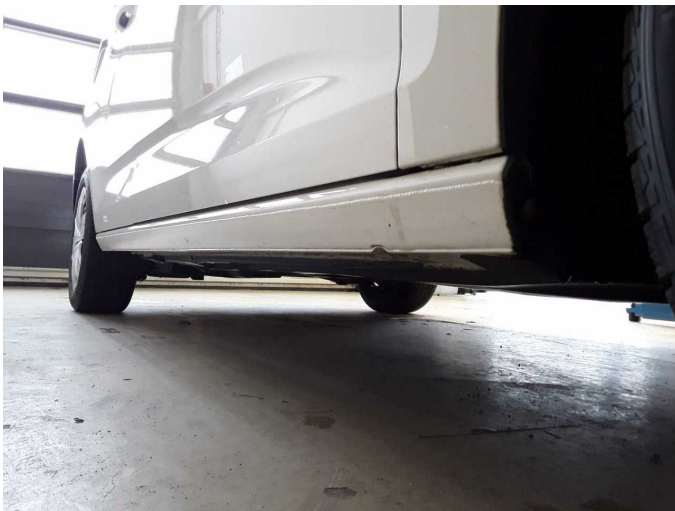


Figure 21: Misc.

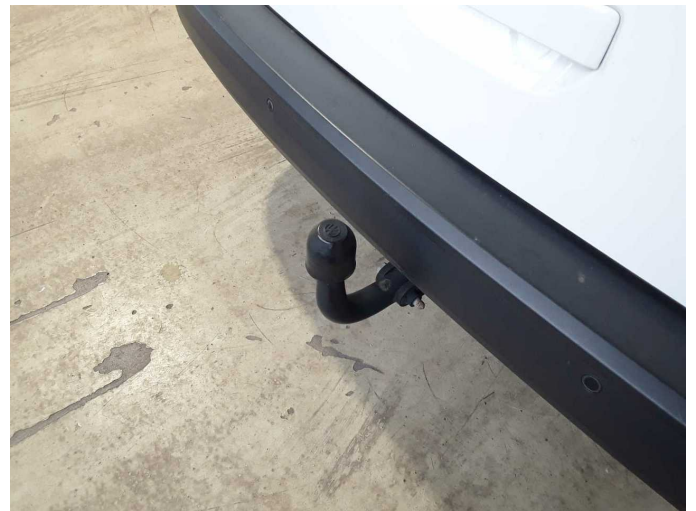


Figure 22: Misc.



Figure 23: Misc.



Figure 24: Misc.



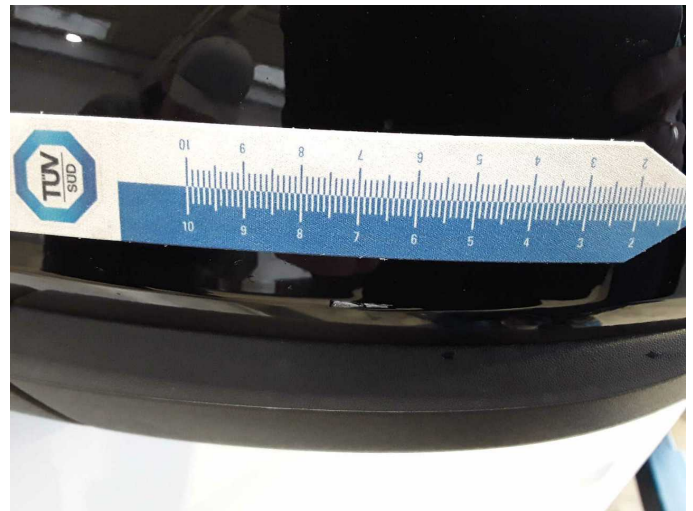
Figure 25: Misc.



Damage 1: Instrument panel: Indicator light (Reifendruck) - on - Perform diagnosis



Damage 2: Wing mirror - left side: Cap - Scratch(es) - Paint



Damage 2: Wing mirror - left side: Cap - Scratch(es) - Paint



Wartungshistorie

(gemäß Auftraggeber Informationen)

Fahrgestellnummer: WV2ZZZSKZMX015509
Hersteller / Modell: VOLKSWAGEN VOLKSWAGEN Caddy 2.0 TDI BMT (5-Si.) DSG
Caddy

Datum	KM-Stand	Beschreibung
12.03.2026	43.963	AU; Wartung Sonstiges
23.09.2025	41.669	Bremsscheiben vorne; Funktionsprüfung; Systemtest/Eigendiagnose
16.06.2025	39.543	Bremsflüssigkeit; Bremsflüssigkeit ern; Motoröl b. Wartung; Ölfilter ern; Regelwartungsdienst; Reparatur Sonstiges; Wartung Sonstiges
22.02.2024	20.591	AU
24.04.2023	11.649	Bremsflüssigkeit ern; Motoröl b. Wartung; Regelwartungsdienst