

## Expertise

Protocol number: 46210258  
Order No. / Reference: 26591581  
Inspection date: 26 Jun 2026

Manufacturer: Mercedes-Benz

Model: GLA 200 d 8G-DCT AMG Line

VIN: W1N4N1CB9PJ524850



### Vehicle details

#### Manufacturer / Type / Model / Equipment

Mercedes-Benz GLA 200 d 8G-DCT AMG Line

<b>Vehicle Identification number</b>	W1N4N1CB9PJ524850
<b>Mileage (Read)</b>	37,960 km
<b>First registration</b>	23 May 2023
<b>Number of holders</b>	1
<b>Next periodical technical inspection</b>	05/2028 (Report not on hand)

<b>Power / Engine displacement</b>	110 kw / 1,950 ccm
------------------------------------	--------------------

<b>Fuel type / Cylinder</b>	Diesel / 4
-----------------------------	------------

<b>Gearbox / Number of gears</b>	Automatic / 8
----------------------------------	---------------

<b>Type of drive</b>	Front drive
----------------------	-------------

<b>Type of vehicle</b>	Station wagon
------------------------	---------------

<b>Colour / colour code</b>	MOUNTAINGRAU - METALLICLACK
-----------------------------	--------------------------------

<b>Doors / Seats</b>	5 / 5
----------------------	-------

<b>Upholstery type</b>	Cloth / leather combination
------------------------	--------------------------------

<b>Colour of upholstery</b>	Black-Anthracite
-----------------------------	------------------



## Vehicle details

<b>Maintenance booklet / proof</b>	Non-existent	<b>Next maintenance in</b>	337 Tag(e)
<b>Last service on / at</b>	05/2026 at 37,362 km		
<b>Key is / should be</b>	2 / 2	<b>FZG documents</b>	ZB#2 (B) was available (copy), ZB#1 (S) was not available.
		<b>Letter No.</b>	GV682974
<b>Previous damage / Accident</b>	None detectable	<b>Repainting</b>	None detectable
<b>Inspection conditions</b>	sufficient	<b>Lifting equipment / pit</b>	No
<b>Test drive</b>	Not performed	<b>Engine function test</b>	Performed
<b>Manufacturer key number/ type code number</b>	2222 / APX 00069		
<b>Emission standard</b>	EURO6;WLTP;AP;PI/CI; M, N1 I	<b>fine dust sticker</b>	
<b>Permitted total weight</b>	2,135 kg	<b>Empty weight</b>	

## Tyres

**Mounted tyres**

#	Tyre size	Type of tyre	Manufacturer	Tread depth
1)	235/50 R19 99W	Summer tyres on Light alloy	Continental	4mm / 4mm
2)	235/50 R19 99W	Summer tyres on Light alloy	Continental	5mm / 5mm

**Additional tyres**

#	Tyre size	Type of tyre	Manufacturer	Tread depth
1)	215/65 R17 99H	Winter tyres on Light alloy	Pirelli	5mm / 5mm
2)	215/65 R17 99H	Winter tyres on Light alloy	Pirelli	7mm / 7mm

**Replacement**

Typ	Tyre size	Type of tyre	Manufacturer	Tread depth
	Tirefit	Expiration date 06/2028		

**Legend: Tread depth information for the left tire is listed first, for the right tire it is listed second on the axle in the direction of travel.**

TÜV SÜD Auto Partner GmbH  
Wiesenring 2  
04159 Leipzig

Inspection location  
Hartmann Fleet Professionals GmbH  
Leerenstraße 25  
29683 Bad Fallingbommel



## Equipment



## Standard equipment

- ADAPTIVE BRAKE with HOLD function, hill start assist, pre-filling and drying brakes in wet conditions
- Airbag: Kneebag for driver
- Airbag: Windowbags (left/right)
- Active Brake Assist
- AMG front apron with chrome front splitter
- AMG rear apron with diffuser look and chrome trim element (as well as two visible, sportily designed tailpipe trims)
- Automatic passenger airbag deactivation
- Heated exterior mirrors on the left and right, electrically adjustable from the inside (with aspherically curved mirror glass and integrated turn signal light)
- Double cup holder
- Third brake light in LED technology
- ECO start/stop function
- Door sills with "Mercedes-Benz" lettering
- Electronic Stability Program (ESP) (ESP Curve Dynamic Assist)
- Chassis: Comfort chassis with lowered suspension (including direct steering)
- Electric windows (4-way)
- electric parking brake
- Windscreen laminated glass
- Luggage net on driver and passenger seatbacks
- Transmission: 8G-DCT dual-clutch automatic transmission, 8-speed
- Halogen headlights including integrated LED daytime running lights
- Illuminated glove box
- Rear window wiper with intermittent function (and automatic activation when reversing)
- Interior headliner fabric crystal grey
- KEYLESS-GO start function
- Climate: THERMATIC automatic climate control (1-zone climate control - automatically controlled air distribution - recirculation function - tunnel mode in conjunction with navigation system - fine dust filter)
- Rear headrests (3) (height adjustable, middle one retractable)
- Paint finish: Solid
- Steering wheel: Multifunction sports steering wheel in Nappa leather (The multifunction sports steering wheel in Nappa leather with chrome control panels is flattened at the bottom and perforated in the grip area – an excellent choice for sporty driving. Among other things, the touch control buttons on the left and right operate a variety of functions, including navigation, telephony, and entertainment. Last but not least, you can also set the cruise control and distance control: everything under control without taking your hands off the steering wheel.)
- Package: Non-smoking (incl. 12V socket and storage compartment at the front)
- Package: Seating comfort (height adjustment for passenger seat - seat cushion tilt adjustment for driver and passenger seats - seat cushion depth adjustment for driver and passenger seats)
- Adaptive brake light flashing
- Airbag for driver and front passenger
- Airbag: Sidebag for driver and front passenger (combined thorax/ pelvisbag)
- Active Lane Keeping Assist
- AMG floor mats (in black with "AMG" lettering)
- Anti-lock braking system (ABS)
- Traction control (ASR)
- Center console armrest for driver and front passenger with integrated storage compartment
- Outdoor temperature display
- Roof rails in polished aluminum
- Diesel particulate filter
- Tachometer
- DYNAMIC SELECT (DYNAMIC SELECT rocker switch in the center console for selecting four different driving programs: ECO, Comfort, Sport and Individual - the driving programs affect the engine, transmission, steering, ECO start/stop function, climate control and, depending on the equipment/model, the suspension (with adjustable damping) - additional off-road driving program, adjustable via DYNAMIC SELECT, which adapts the power delivery and ABS control for light off-road terrain, only in conjunction with the Off-Road Engineering Package (430))
- Speed Limit Assist (The Speed Limit Assist makes it easy for you to comply with the regulations and avoid unnecessary speeding tickets. The system shows what is permitted: It can detect the current speed limit via the camera and display it in the instrument cluster. Additional restrictive signs for special weather conditions such as wet conditions are also detected.)
- Heated rear window with timer
- ISOFIX child seat anchorages with Top Tether in the rear
- Mechanical child safety lock (in the rear doors and electric for the rear window regulators)
- Communication module (LTE) for the use of Mercedes me connect services (communication module with permanently installed SIM card of the mobile communications standard LTE - two mobile communications antennas)
- Cargo area cover
- Steering column mechanically adjustable in height and length
- Mercedes-Benz emergency call system
- Navigation accessories: Extended MBUX functions (personalization (profiles) and prediction functions - LINGUATRONIC with natural language understanding - activation via "Hey Mercedes" - Wi-Fi hotspot - internet radio)



- Upholstery: ARTICO leatherette/MICROCUT microfiber
- Radio: MBUX multimedia system (instrument display with 17.78 cm diagonal - media display with 17.78 cm diagonal and touch function - touch control buttons on the steering wheel - radio - USB interface in the center console under the armrest - Bluetooth telephony with contact transfer and audio streaming of music files - display of vehicle functions (driver assistance systems, driving programs and vehicle settings) - favorites storage - smartphone-related voice control - activated by long press on the voice button on the steering wheel)
- Wheels: 48.3 cm (19") AMG light-alloy wheels, 4-piece set in 5-twin-spoke design (aerodynamically optimized, painted tantalum grey and polished, 235/50 R19 with 7.5 J x 19 ET 53)
- GLA-Class seat belts (3-point seat belts including mechanical belt height adjustment, pyrotechnic retractor tensioning and belt force limitation, and electrically reversible belt retractor tensioner)
- 12V power outlet in center console
- High-visibility vest for drivers
- Electronic immobilizer (including locking system with radio remote control in the electronic key in chrome look, optical locking feedback and emergency opening (approved by AZT and TÜV))
- Heat-insulating glass, green all around (rear window single-pane safety glass (ESG))
- Decorative elements carbon structure

### Extra equipment

- Storage compartment in center console with roller blind (The roller blind for the storage compartment in the center console offers you an elegant privacy screen made of high-quality material. This looks good, the interior appears even tidier, and everything important is within easy reach. Typical everyday items such as a smartphone, wallet, or various keys fit into the practical storage compartment.)
- LED High Performance headlights (low beam in LED projection technology - high beam with LED reflector technology - daytime running lights, position lights and direction indicators in LED technology - automatic adjustment of the light intensity of the rear lights to the surroundings)
- Package: MBUX Advanced Package (Hard drive navigation - Smartphone integration - Traffic sign assistant - Preparation for digital key handover - Connectivity package navigation - Preparation for live traffic information)
- Heated seats for driver and front passenger
- TIREFIT with tire inflation compressor
- Dark tinted heat-insulating glass (rear side windows and rear window)

- Package: Light and Sight Package (Overhead control unit "4 light stones" (including glasses compartment) - Interior light/reading light rear in mounting plate (rear/left/right) - Touchpad lighting (front) - Reading lights (front/left/right), console ambient light - Make-up lights (front/left/right) - Signal and ambient light - Exit signal light (front/left/right) - Handle recess/pull-out handle lighting (front/rear/left/right) - Footwell lighting (front/left/right) - Cupholder/storage compartment lighting - Spontaneous storage compartment lighting)
- Radio accessories: Digital radio
- Radio accessories: Touchpad
- Rain and light sensor
- Tire pressure monitoring system (continuously monitors the inflation pressure of all four tires)
- Remote Services Plus (The Remote Services Plus package transforms mobility into a new experience, offering greater comfort and safety. Status queries provide information about the remaining range. You can remotely control certain functions and locate your vehicle. Services such as maintenance management coordinate service appointments, saving you valuable time.)
- Service interval indicator ASSYST
- Seats: Rear seat backrests foldable (40/20/40 split)
- Seats: Sports seats (with adjustable headrest)
- Sport pedal assembly made of brushed stainless steel with rubber studs
- Cruise control (Drive relaxed and fuel-efficiently, especially on longer journeys. Simply select your desired speed and your vehicle will regulate it. In addition to the cruising speed, the speed limiter helps you maintain a maximum speed. This increases road safety and protects you from expensive speeding tickets.)
- Central locking (with interior switch, automatic locking (can be deactivated) and crash sensor with emergency opening)

- Towbar with ESP trailer stabilization
- EASY-PACK tailgate (electrically opening and closing tailgate - switch for electrically opening the tailgate in the driver's door - switch for electrically closing the tailgate at the bottom edge of the tailgate - manual cargo cover for covering the cargo area)
- Paint finish: Metallic (according to sample card)
- Steering: Direct steering
- Package: Business (Hard drive navigation - Smartphone integration - Traffic sign assistant - Preparation for digital key handover - Connectivity package navigation - Seat heating for driver and front passenger - Parking assistant with PARKTRONIC - Preparation for live traffic information)
- Package: Parking package with reversing camera (Active Parking Assist with PARKTRONIC)
- Panoramic sliding sunroof (electrically operated in glass design with comfort and automatic rain closing, electric sunshade, anti-pinch protection and PRE-SAFE closing function)



## Brief expert findings

Documents submitted	At the time of the inspection, the vehicle registration certificate Part 2 (title) was available, but the vehicle registration certificate Part 1 (document) was not. (Copy)
VIN comparison	The vehicle identification number (VIN) was read from the vehicle and its conformity with the submitted documents was confirmed by the undersigned during the inspection.
Inspection	The inspection conditions were sufficient for the assessment of the vehicle. No lifting equipment or pit was available for inspecting the vehicle. Therefore, inspection of the vehicle's underside was only possible to a limited extent.
Test drive	No test drive/shunting maneuver was carried out during the inspection of the vehicle.
Engine function test	An engine test run was performed.

## Value reducing factors

No.	Component group	Description
1	Door - rear left side	Door handle - outside - Scratch(es) - Smart repair

## Wear and tear

No.	Component group	Description
1	Vehicle glazing	Windscreen - Stone chips - No deduction
2	Bonnet	Bonnet - Stone chips - No deduction
3	Front bumper	Front bumper - Stone chips - No deduction
4	Rear bumper	Rear bumper - Scratch(es) - No deduction

The vehicle shows signs of wear and tear commensurate with its age and use.

## Order/Scope of Order

An order was placed to prepare a sales report for the described vehicle. This report includes the following:

- Description of key vehicle information
- Documentation of equipment features  
(*Delivery by third-party service providers*)
- Documentation of damage, defects, missing parts
- Documentation of prior damage, unrepaired prior damage, repainting
- A brief visual or functional inspection of the equipment details, if possible.  
(*Functional testing of driver assistance systems is not included in the scope of services!*)
- a photographic documentation of the vehicle



## Basis for the order

This product is based on the guidelines for vehicle returns and valuations published by Alphabet Fleet GmbH. The expert makes the specific findings in each individual case objectively, within the framework of the prescribed standards, based on their own expertise.

The vehicle inspection takes place in a fully assembled, unassembled state.

Damage or defects that can only be detected during disassembly/diagnostic work or through further investigation remain within the realm of prognostic risk. An increased risk exists due to concealed defects caused by fraudulent misrepresentation and which were not identifiable by the expert.

Damage or defects resulting from normal use or wear and tear of the vehicle will be accepted in accordance with the applicable standard.

There was no explicit identification or monetary consideration of the expected features within the product.

Features which, in their nature and extent, slightly exceed normal use but do not constitute unacceptable damage, will be documented and indicated as signs of wear, if applicable.

Damage or defects that, according to the applicable standard, can no longer be attributed to normal use or wear and tear are listed under "Value Reducing Factors" in the product description.

Depending on the product specification, a monetary ID can be provided. If this takes place, the costs can be 100% or pro rata depending on the vehicle's age and mileage.

## Previous damages

No apparent prior damage that had been repaired could be found on the vehicle.

## Comments

- Winterradsatz ist kein Bestandteil des Auslieferungsumfangs.



Figure 1: Diagonal front (left)



Figure 2: Diagonal front (right)



Figure 3: Diagonal rear (left)



Figure 4: Diagonal rear (right)



Figure 5: Interior - front



Figure 6: Interior - rear



Figure 7: Instrument cluster



Figure 8: Instrument panel



Figure 9: Interior 360° view



Figure 10: Cargo area



Figure 11: VIN



Figure 12: Mounted tyres



Figure 13: Documents



Figure 14: Additional tyres



Figure 15: Additional tyres



Figure 16: Navigation



Figure 17: Misc.



Figure 18: Misc.



Figure 19: Misc.



Figure 20: Misc.



Figure 21: Misc.



Figure 22: Misc.



Figure 23: Misc.

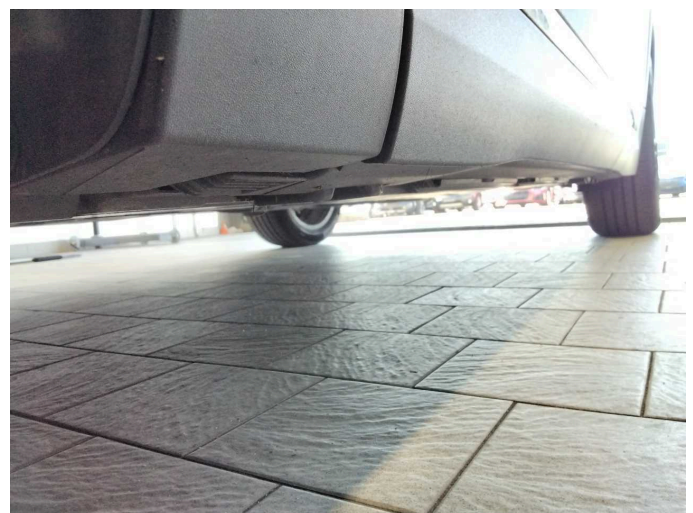


Figure 24: Misc.



Figure 25: Misc.



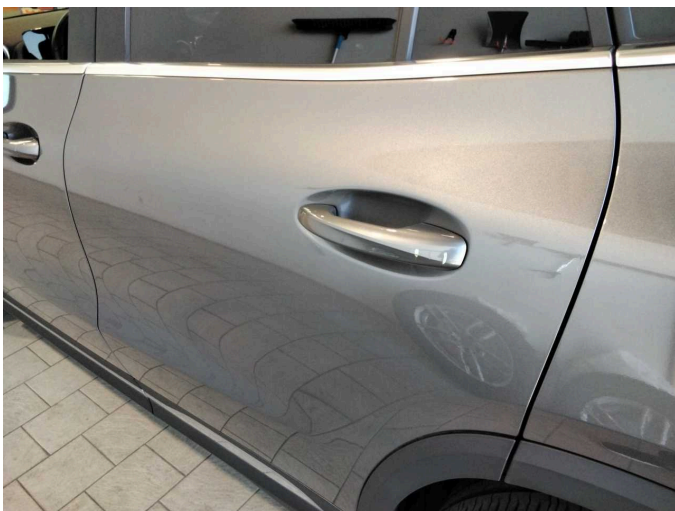
Figure 26: Misc.



Figure 27: Misc.



Figure 28: Misc.



Damage 1: Door - rear left side: Door handle - outside - Scratch(es) - Smart repair



Damage 1: Door - rear left side: Door handle - outside - Scratch(es) - Smart repair



**Wear and tear 1:** Vehicle glazing: Windscreen - Stone chips - No deduction