

Expertise

Protocol number: 46182256
Order No. / Reference: 26536712
Inspection date: 25 Jun 2026

Manufacturer: Volkswagen

Model: Passat Variant 1.4 TSI Plug-In-Hybrid DSG GTE

VIN: WVVZZZ3CZNE021687



Vehicle details

Manufacturer / Type / Model / Equipment

Volkswagen Passat Variant 1.4 TSI Plug-In-Hybrid DSG GTE

Vehicle Identification number WVVZZZ3CZNE021687

Mileage (Read) 133,756 km

First registration 2 Nov 2021

Number of holders 1

Power / Engine displacement 115 kw / 1,395 ccm

Fuel type / Cylinder Hybr.B/E ext.auf / 4

Gearbox / Number of gears Automatic / 6

Type of drive Front drive

Type of vehicle Station wagon

Colour / colour code Pure white

Doors / Seats 5 / 5

Upholstery type Alcantara / Leather

Colour of upholstery Black-Anthracite



Vehicle details			
Maintenance booklet / proof	digital proof / complete	Next maintenance in	6,300 km
Last service on / at	02/2026 at 125,049 km		
Key is / should be	2 / 2	FZG documents	ZB#2 (B) was available (copy), ZB#1 (S) was not available.
		Letter No.	GF349408
Previous damage / Accident	None detectable	Repainting	None detectable
Inspection conditions	sufficient	Lifting equipment / pit	No
Test drive	Not performed	Engine function test	Performed
Manufacturer key number/ type code number	0603 / BRZ 00009		
Emission standard	EURO6;W;PI/CI; M, N1 I	fine dust sticker	
Permitted total weight	2,270 kg	Empty weight	

Tyres

Mounted tyres				
#	Tyre size	Type of tyre	Manufacturer	Tread depth
1)	235/45 R18 98Y	Summer tyres on Light alloy	Continental	6mm / 6mm
2)	235/45 R18 98Y	Summer tyres on Light alloy	Continental	6mm / 6mm
Additional tyres				
#	Tyre size	Type of tyre	Manufacturer	Tread depth
1)	215/55 R17 94H	Winter tires (with run-flat tires) on Light alloy	Continental	6mm / 6mm
2)	215/55 R17 94H	Winter tires (with run-flat tires) on Light alloy	Continental	3mm / 3mm

Legend: Tread depth information for the left tire is listed first, for the right tire it is listed second on the axle in the direction of travel.

TÜV SÜD Auto Partner GmbH
Wiesenring 2
04159 Leipzig

Inspection location
Hartmann Fleet Professionals GmbH
Leerenstraße 25
29683 Bad Fallingbommel



Equipment



Standard equipment

- Airbag for driver and front passenger (airbag deactivation switch on the passenger side)
- Anti-lock braking system (ABS)
- Adaptive Cruise Control (ACC) "stop & go", including speed limiter
- Electrically adjustable and heated exterior mirrors, ambient lighting (automatically dimming on the driver's side)
- Chrome trim on the side windows
- black roof rails
- e-Sound (artificially generated engine noise to inform other road users about the approach of the e-vehicle)
- Entry/warning lights in LED technology in the front doors
- Automatic headlight control (with daytime running lights, "Leaving home" function and manual "Coming home" function)
- Pedestrian detection
- Transmission: 6-speed DSG (6-speed dual-clutch transmission DSG)
- Interior mirror automatically dimming
- Air conditioning system "Air Care Climatronic" with 3-zone temperature control and allergen filter
- Front headrests (safety-optimized, longitudinally and height-adjustable)
- LED headlights with daytime running lights
- Headlight range control
- Front center armrest, height and length adjustable, with storage box (2 rear air vents with chrome slats)
- Fatigue detection (detects signs of possible driver fatigue based on characteristic steering behavior, time of day and driving duration and issues a visual and audible warning)
- Navigation system "Discover Media" incl. "Streaming & Internet" (4x20 watts, user interface with proximity sensor, dual tuner with phase diversity, vehicle menu, speed, volume adjustment, map, 2D display, tone control, 3-way TFT display with touchscreen operation, navigation "Discover Media" incl. "Streaming & Internet", MP3 radio, telephone contact addresses for navigation, telephone interface, 2 USB ports also for iPod/iPhone, traffic sign recognition "VW Media Control", We Connect Plus, 3 years, incl. We Connect route guidance, dynamic RDS, TMC tuner)
- Package: Light and Sight Package "Plus" (LED lights in the front footwell - Electrically adjustable and heated exterior mirrors, automatically dimming on the driver's side - Entry/warning lights in the front doors, in LED technology - Automatic headlight control, with daytime running lights, "Leaving Home" function and manual "Coming Home" function - Interior light with delayed shut-off and dimming function, 2 LED reading lights each in the front and rear - Automatically dimming interior mirror - Illuminated vanity mirrors - Extendable sun visors - Rain sensor)
- Tire pressure monitoring system (passive)
- Wheels: 4 "Montpellier" 7 J x 17 alloy wheels in black, polished surface (low rolling resistance - AirStop tires 215/55 R 17 - wheel locks with enhanced theft protection)
- Airbag, head airbag system for front and rear passengers (including front side airbags)
- App-Connect Wireless (Volkswagen offers three interfaces for connecting smartphones with numerous possibilities: - Apple CarPlay - Android Auto from Google - MirrorLink)
- Cup holders (2) front
- Hill start assist
- third brake light
- Headliner in Mistral Grey
- Tachometer
- Parking aid - warning signals for obstacles in the front and rear area
- Electronic parking brake including auto-hold function
- Remote release for luggage compartment lid
- Windscreen made of laminated safety glass, heat and sound insulating
- Adjustable luggage compartment floor
- Interior lights with delayed shut-off and dimming function (2 LED reading lights each at the front and rear)
- ISOFIX mounting points (for attaching 2 child seats to the rear seats, also for i-Size child seats)
- Rear headrests (3)
- Paint finish: Solid
- LED taillights
- Steering wheel: Multifunction sports steering wheel in leather, with paddle shifters (gearshift knob in leather)
- Multifunction display "Premium" with multi-color display (showing, among other things: - Outside temperature - Average consumption - Average speed - Trip distance - Trip time - Gear recommendation - Speed warning - Comfort - Current consumption - Range - Service - Time with extended display options, e.g.: - Digital speedometer - Digital oil temperature display - Lights & visibility - Language - Auxiliary heater - Winter tires)
- Mains charging cable for household socket
- Mesh partition
- Non-smoking version (storage compartment and 12V socket at the front)
- Emergency braking assistant "Front Assist" (for automatic distance control ACC up to 210 km/h)
- Emergency call service (no registration required, service is activated upon delivery)
- Upholstery: Fabric "Weave" (center panels of the front seats and outer rear seats in fabric "Weave")
- Proactive occupant protection system in conjunction with "Front Assist" (detects critical traffic situations with increased accident potential - prepares vehicle occupants and the vehicle for a possible accident by tightening the front, fastened seat belts and securing the driver and front passenger, and closing open windows and the sunroof except for a gap)



- Rear bench seat undivided, backrest asymmetrically split and foldable, with center armrest (and pass-through option)
- Seat belts: Three-point automatic seat belt (seat belt for middle rear seat - seat belts for outer rear seats - front seat belts with height adjustment and belt tensioner)
- Seats: Front seats height-adjustable (ergoComfort seat on the driver's side - with electric backrest adjustment)
- Start-stop system (with brake energy recuperation)
- Bumpers in body color
- Telephone interface
- First aid kit, warning triangle and high-visibility vest
- Electronic immobilizer

Extra equipment

- Towbar, foldable (with electric release)
- Digital Cockpit, multicoloured
- Tailgate with electric opening and closing, electric opening for luggage compartment cover (extendable and removable luggage compartment cover with electric opening - tailgate with electric opening and closing)
- Package: "Business Premium" package incl. navigation (from Business trim level) (2 USB-C ports in the front, 1 USB-C charging port in the rear, 230V socket, App-Connect incl. wireless, Apple CarPlay, Android Auto, "Travel Assist" driver assistance system and "Lane Assist" lane keeping system, Air Care Climatronic with 3-zone temperature control, allergen filter and rear controls, lumbar support in the front, electric on the driver's side, massage function on the driver's side, "Rear View" reversing camera, heated windshield washer nozzles, Comfort telephone interface, inductive charging function, heated front seats)
- Package: IQ.DRIVE incl. IQ.LIGHT - LED matrix headlights in conjunction with Business Package (Dynamic Light Assist high beam control, Travel Assist, Lane Assist and Emergency Assist, LED matrix headlights, LED daytime running lights, cornering lights and dynamic turn signals, LED taillights with dynamic turn signals, dynamic headlight range control with dynamic cornering lights, rear fog lights on both sides, reversing lights on both sides, Park Assist including parking aid, Side Assist lane change assistant and Rear Traffic Alert)
- Auxiliary heating and ventilation (with radio remote control and timer)

- Radio accessories: Digital radio reception DAB+ (reception of digitally broadcast radio stations and traffic information in addition to the analog station offering - reception depends on the local availability of digital networks - expanded range of radio programs - improved reception performance)
- Keyless start system without safe locking
- Power steering (electromechanical, speed-dependent)
- Seats: Comfort seats in the front
- Seats: Lumbar support in the front (driver's side electrically adjustable)
- Lane Assist (warns with a corrective steering intervention if the vehicle unintentionally leaves the lane)
- 12V power outlet on the rear center console (and in the luggage compartment)
- Textile floor mats (front and rear)
- Warning tone and light for unfastened seat belts front and rear

- Black roof rails with 2 silver anodized support bars (anti-theft protection and included in a storage bag)
- Cable for AC charging station (incl. standard mains charging cable for household socket)
- Steering wheel: Multifunction sports steering wheel in leather, heated, with paddle shifters
- Package: "Design and Comfort" in conjunction with "Business Premium" (silver anodized roof rails - stainless steel door sill trims front and rear - automatically heated windshield washer nozzles in the front - "ArtVelours" seat center panels of the front seats and outer rear seats, - inner side bolsters in "Vienna" leather - sport comfort seats in the front - heated front seats)
- Package: Ambient lighting "Plus" (multicoloured ambient lighting - LED entry/warning lights in all doors - interior lights with switch-off delay and dimming function, 2 LED reading lights each in the front and rear)
- Panoramic tilt/slide sunroof (with panoramic roof at the rear)
- Wheels: 4 light alloy wheels 8 J x 18 "Dartford" (AirStop tires 235/45 R 18, optimized for rolling resistance - With individual installation - Wheel locks with enhanced theft protection - Rear disc brakes, brake calipers in blue (only for GTE))
- Wheels: Tire Mobility Set omitted
- Rear side windows and rear window tinted
- Sunshade roller blind on the rear door windows
- "Comfort" telephone interface with inductive charging function



Brief expert findings

Documents submitted	At the time of the inspection, the vehicle registration certificate Part 2 (title) was available, but the vehicle registration certificate Part 1 (document) was not. (Copy)
VIN comparison	The vehicle identification number (VIN) was read from the vehicle and its conformity with the submitted documents was confirmed by the undersigned during the inspection.
Inspection	The inspection conditions were sufficient for the assessment of the vehicle. No lifting equipment or pit was available for inspecting the vehicle. Therefore, inspection of the vehicle's underside was only possible to a limited extent.
Test drive	No test drive/shunting maneuver was carried out during the inspection of the vehicle.
Engine function test	An engine test run was performed.

Value reducing factors

No.	Component group	Description
1	Wing mirror - left side	Cap - Scratch(es) - Smart repair
2	Side panel - rear right side	Side panel - dent(s) - Smooth repair work
3	Trim / covers	Roof lining - Scratch(es) - Smart repair
4	Mudguard - right side	Mudguard - right side - Scratch(es) - Smart repair
5	Bonnet	Bonnet - Stone chips - Loss in value
6	Wheel / tyres	Alloy rim - front right side - Scratch(es) - Loss in value
7	Roof	Roof rail - left side - Dent / paintcoat damage - Smart repair
8	Multimedia system	Screen - Scratch(es) - Loss in value
9	Door - rear right side	Door - Scratch(es) - Paint
10	Front bumper	Front bumper (Inklusive anbauteile) - Scratch(es) - Paint
11	Wheel / tyres	Alloy rim - rear left side (Sichtbar Bearbeitet) - Unprofessionally repaired - Replace
12	Mudguard - left side	Mudguard - left side - Deformed - Repair and paint

Wear and tear

No.	Component group	Description
1	Side panel - rear left side	Sill - Scratch(es) - No deduction
2	Wheel / tyres	Tyres - complete set (Ohne Airstop) - No deduction
3	Rear bumper	Rear bumper - Scratch(es) - No deduction
4	2nd wheel set	2 tyres - Does not meet the leasing specifications - No deduction

The vehicle shows signs of wear and tear commensurate with its age and use.

Missing parts

Description

Documents - Service book (Digitaler Ausdruck)



Order/Scope of Order

An order was placed to prepare a sales report for the described vehicle. This report includes the following:

- Description of key vehicle information
- Documentation of equipment features
(Delivery by third-party service providers)
- Documentation of damage, defects, missing parts
- Documentation of prior damage, unrepaired prior damage, repainting
- A brief visual or functional inspection of the equipment details, if possible.
(Functional testing of driver assistance systems is not included in the scope of services!)
- a photographic documentation of the vehicle

Basis for the order

This product is based on the guidelines for vehicle returns and valuations published by Alphabet Fleet GmbH. The expert makes the specific findings in each individual case objectively, within the framework of the prescribed standards, based on their own expertise.

The vehicle inspection takes place in a fully assembled, unassembled state.

Damage or defects that can only be detected during disassembly/diagnostic work or through further investigation remain within the realm of prognostic risk. An increased risk exists due to concealed defects caused by fraudulent misrepresentation and which were not identifiable by the expert.

Damage or defects resulting from normal use or wear and tear of the vehicle will be accepted in accordance with the applicable standard.

There was no explicit identification or monetary consideration of the expected features within the product.

Features which, in their nature and extent, slightly exceed normal use but do not constitute unacceptable damage, will be documented and indicated as signs of wear, if applicable.

Damage or defects that, according to the applicable standard, can no longer be attributed to normal use or wear and tear are listed under "Value Reducing Factors" in the product description.

Depending on the product specification, a monetary ID can be provided. If this takes place, the costs can be 100% or pro rata depending on the vehicle's age and mileage.

Previous damages

No apparent prior damage that had been repaired could be found on the vehicle.

Comments

- Der beiliegende Winterradsatz ist kein Bestandteil des Auslieferungsumfangs.



Figure 1: Diagonal front (left)



Figure 2: Diagonal front (right)



Figure 3: Diagonal rear (left)



Figure 4: Diagonal rear (right)



Figure 5: Interior - front



Figure 6: Interior - rear



Figure 7: Instrument cluster



Figure 8: Instrument panel



Figure 9: Interior 360° view



Figure 10: Cargo area

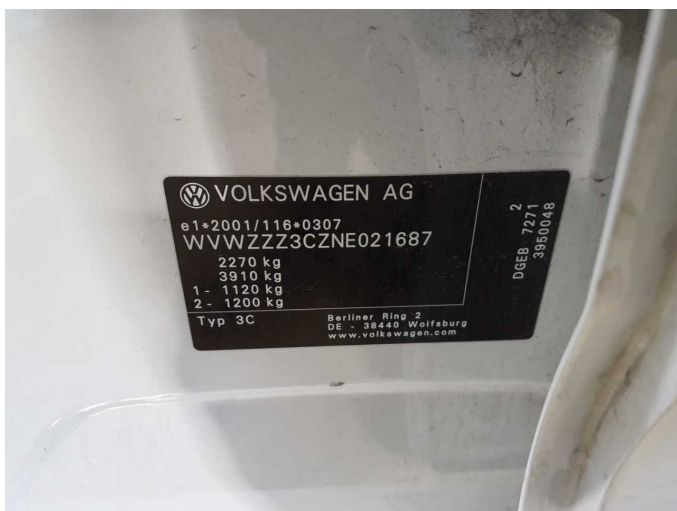


Figure 11: VIN



Figure 12: Mounted tyres



Figure 13: Documents



Figure 14: Additional tyres



Figure 15: Additional tyres



Figure 16: Additional tyres



Figure 17: Navigation



Figure 18: Misc.



Figure 19: Misc.



Figure 20: Misc.

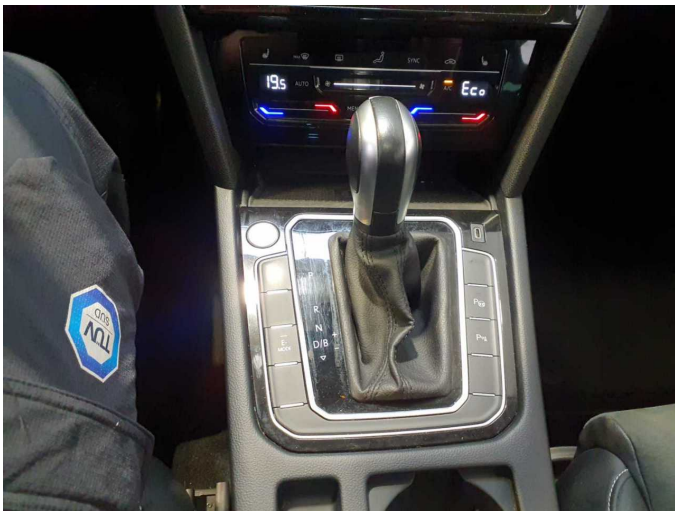


Figure 21: Misc.



Figure 22: Misc.



Figure 23: Misc.



Figure 24: Misc.



Figure 25: Misc.



Figure 26: Misc.



Figure 27: Misc.

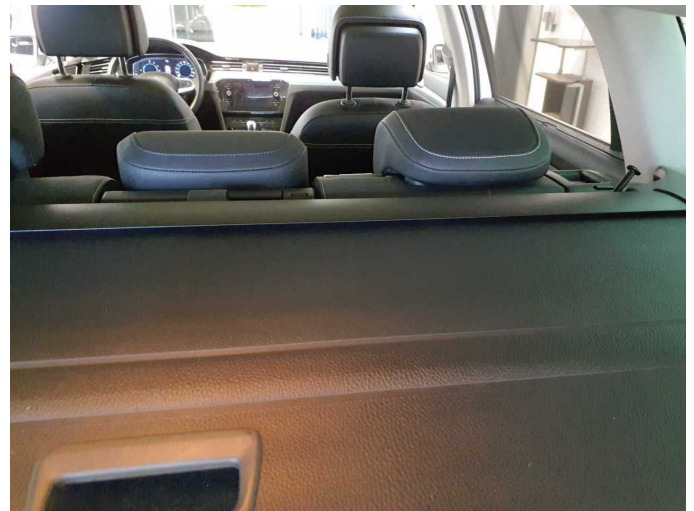


Figure 28: Misc.



Figure 29: Misc.



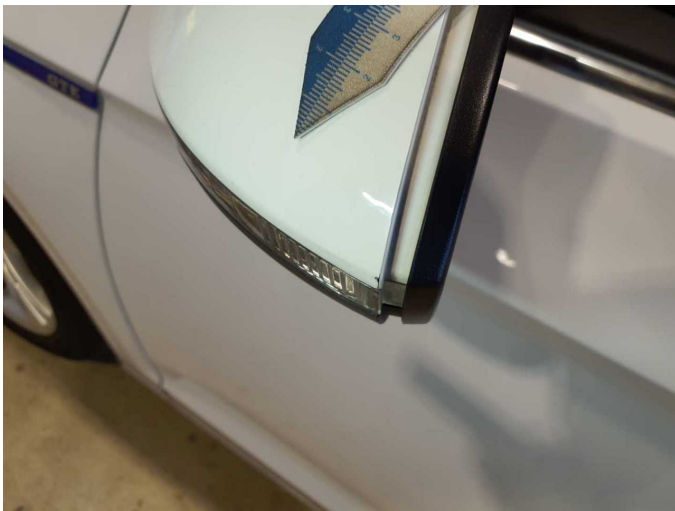
Figure 30: Misc.



Figure 31: Misc.



Damage 1: Wing mirror - left side: Cap - Scratch(es) - Smart repair



Damage 1: Wing mirror - left side: Cap - Scratch(es) - Smart repair



Damage 2: Side panel - rear right side: Side panel - dent(s) - Smooth repair work



Damage 2: Side panel - rear right side: Side panel - dent(s) - Smooth repair work



Damage 3: Trim / covers: Roof lining - Scratch(es) - Smart repair



Damage 3: Trim / covers: Roof lining - Scratch(es) - Smart repair



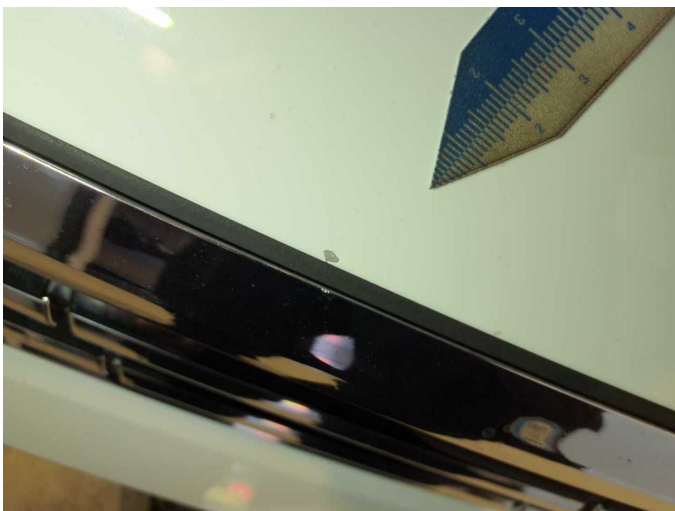
Damage 4: Mudguard - right side: Mudguard - right side - Scratch(es) - Smart repair



Damage 4: Mudguard - right side: Mudguard - right side - Scratch(es) - Smart repair



Damage 5: Bonnet: Bonnet - Stone chips - Loss in value



Damage 5: Bonnet: Bonnet - Stone chips - Loss in value



Damage 6: Wheel / tyres: Alloy rim - front right side - Scratch(es) - Loss in value



Damage 6: Wheel / tyres: Alloy rim - front right side - Scratch(es) - Loss in value



Damage 7: Roof: Roof rail - left side - Dent / paintcoat damage - Smart repair



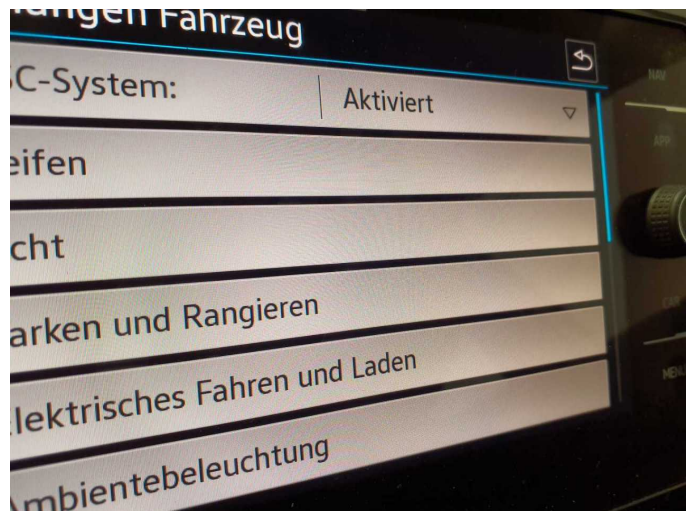
Damage 7: Roof: Roof rail - left side - Dent / paintcoat damage - Smart repair



Damage 7: Roof: Roof rail - left side - Dent / paintcoat damage - Smart repair



Damage 8: Multimedia system: Screen - Scratch(es) - Loss in value



Damage 8: Multimedia system: Screen - Scratch(es) - Loss in value



Damage 9: Door - rear right side: Door - Scratch(es) - Paint



Damage 9: Door - rear right side: Door - Scratch(es) - Paint



Damage 10: Front bumper: Front bumper (Inklusive anbauteile) - Scratch(es) - Paint



Damage 10: Front bumper: Front bumper (Inklusive anbauteile) - Scratch(es) - Paint



Damage 10: Front bumper: Front bumper (Inklusive anbauteile) - Scratch(es) - Paint



Damage 10: Front bumper: Front bumper (Inklusive anbauteile) - Scratch(es) - Paint



Damage 11: Wheel / tyres: Alloy rim - rear left side (Sichtbar Bearbeitet) - Unprofessionally repaired - Replace



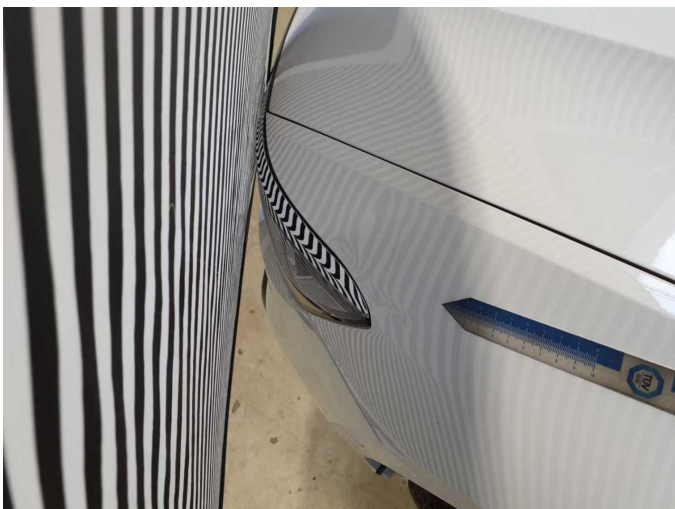
Damage 11: Wheel / tyres: Alloy rim - rear left side (Sichtbar Bearbeitet) - Unprofessionally repaired - Replace



Damage 11: Wheel / tyres: Alloy rim - rear left side (Sichtbar Bearbeitet) - Unprofessionally repaired - Replace



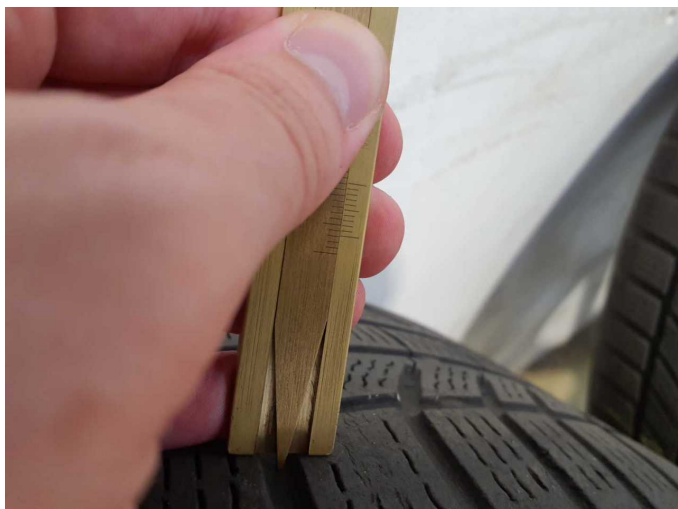
Damage 12: Mudguard - left side: Mudguard - left side - Deformed - Repair and paint



Damage 12: Mudguard - left side: Mudguard - left side - Deformed - Repair and paint



Wear and tear 4: 2nd wheel set: 2 tyres - Does not meet the leasing specifications - No deduction



Wear and tear 4: 2nd wheel set: 2 tyres - Does not meet the leasing specifications - No deduction