

Expertise

Protocol number: 46113789
Order No. / Reference: 26397668
Inspection date: 24 Jun 2026

Manufacturer: Volkswagen

Model: ID.4 4Motion GTX

VIN: WVGZZZE2ZPE038126



Vehicle details

Manufacturer / Type / Model / Equipment

Volkswagen ID.4 4Motion GTX

Vehicle Identification number WVGZZZE2ZPE038126

Mileage (Read) 98,882 km

First registration 21 Jun 2023

Number of holders 1

Next periodical technical inspection 06/2026
(Report not on hand)

Power / Engine displacement 77 kw / 0 ccm

Fuel type / Cylinder Electric / 0

Gearbox / Number of gears Direct drive / 1

Type of drive All-wheel drive

Type of vehicle Station wagon

Colour / colour code Stonewashed Blue
Metallic

Doors / Seats 5 / 5

Upholstery type Cloth / leather
combination

Colour of upholstery Black-Red

Roof colour Dach Schwarz

Re-import no

readiness to drive Roadworthy



Vehicle details

Maintenance booklet / proof	digital proof / complete	Next maintenance in	331 Tag(e)
Last service on / at	05/2025 at 65,415 km		
Key is / should be	2 / 2	FZG documents	ZB#2 (B) was available (copy), ZB#1 (S) was not available.
		Letter No.	GS448697
Previous damage / Accident	None detectable	Repainting	None detectable
Inspection conditions	sufficient	Lifting equipment / pit	yes
Test drive	Not performed	Engine function test	Performed
readiness to drive	Roadworthy		
Manufacturer key number/ type code number	0603 / CLR 00026		
Emission standard	2017/1151;WLTP;reine Elektrofz	fine dust sticker	
Permitted total weight	2,750 kg	Empty weight	

Tyres

Mounted tyres

#	Tyre size	Type of tyre	Manufacturer	Tread depth
1)	235/55 R19 101T	Winter tyres on Steel	Bridgestone	5mm / 5mm
2)	255/50 R19 103T	Winter tyres on Steel	Bridgestone	5mm / 5mm

Additional tyres

#	Tyre size	Type of tyre	Manufacturer	Tread depth
1)	235/45 R21 101T	Summer tyres on Light alloy	Hankook	3mm / 3mm
2)	255/40 R21 102T	Summer tyres on Light alloy	Hankook	3mm / 3mm

Legend: Tread depth information for the left tire is listed first, for the right tire it is listed second on the axle in the direction of travel.



Equipment

Standard equipment

- 2 USB-C ports at the front, 2 USB-C charging ports at the rear of the center console
- Airbags: Front and rear head airbags, front side airbags, center airbag
- 30-color ambient lighting
- Adaptive Cruise Control (ACC) "stop & go" including speed limiter
- Car2X
- e-Sound
- Parking assistance
- ESP Electronic Stability Program
- Dynamic high beam control "Dynamic Light Assist" for LED matrix headlights
- Back window, heater
- Infotainment accessories: Online update capability from ID.Software 2.1
- Air conditioning system "Air Care Climatronic"
- Paint finish: Solid color, with differing roof color
- Charging: 11 kW AC charging power (alternating current)
- LED matrix headlights - IQ.LIGHT
- The strip between the headlights is illuminated.
- Makeup mirrors in the sun visors
- Variable center console
- Emergency braking assistant "Front Assist" with pedestrian and cyclist detection
- Upholstery: Seat center panels of the front seats and the outer rear seats in "GTX" fabric
- Radio accessories: Digital radio reception DAB+
- Tire pressure monitoring system
- Windows: Rear side windows and rear window tinted
- Keyless Start system
- Seat belts: Three-point automatic seat belts at the front with height adjustment and belt tensioner
- Seats: Heated front seats
- Seats: Front seats with height adjustment
- Lane keeping assistant "Lane Assist"
- Telephone interface
- Ambient lighting with logo projection
- Traffic sign recognition
- Electronic immobilizer
- Central locking including remote control
- Turning brake function and evasive steering support
- Airbag for driver and front passenger, with front passenger airbag deactivation
- Permanent 4MOTION all-wheel drive
- App-Connect Wireless for Apple CarPlay and Android Auto
- Electrically adjustable, folding and heated exterior mirrors
- third brake light
- black roof rails
- Black surround for the infotainment display and central controls
- Driving profile selection
- Windscreen made of laminated safety glass
- Transmission: 1-speed automatic
- rear window wiper
- Interior mirror automatically dimming
- ISOFIX mounting points for child car seats
- Front and rear headrests (5)
- Mode 3 Type 2 charging cable, 16 A
- Charging: Maximum DC charging power depends on the traction battery.
- Steering wheel: Multifunction leather steering wheel, heated, with touch controls
- Fatigue detection
- Emergency call service
- Stainless steel pedals in a "Play/Pause" design
- Radio "Ready 2 Discover"
- Radio accessories: 6 + 1 speakers
- Rain sensor
- LED taillights: 3D LED taillights with dynamic turn signals
- Front windshield washer nozzles automatically heated
- electromechanical power steering
- Seats: Armrest for front seats
- Seats: Rear seat backrest asymmetrically split and foldable, with pass-through and center armrest
- Voice control
- Bumpers in a sporty design
- Engine underguard
- First aid kit, warning triangle and high-visibility vest
- Prepared for later activation: "Discover Pro" navigation function

Extra equipment

- Folding towbar 1M6
- Package: Assistance package "Plus" including IQ.DR WD3
- Package: Infotainment package "Plus" RD2
- Package: Sport package "Plus" PSG
- Heat pump for range optimization WPW
- Floor mats 0TD
- Package: Design Package PA2
- Package: Comfort package "Plus" PBN
- Wheels: LM Narvik 8.5Jx21/9Jx21 black PJ6



Brief expert findings

Documents submitted	At the time of the inspection, the vehicle registration certificate Part 2 (title) was available, but the vehicle registration certificate Part 1 (document) was not. (Copy)
VIN comparison	The vehicle identification number (VIN) was read from the vehicle and its conformity with the submitted documents was confirmed by the undersigned during the inspection.
Inspection	The inspection conditions were sufficient for the assessment of the vehicle. Lifting equipment and/or a pit were available for examining the vehicle.
Test drive	No test drive/shunting maneuver was carried out during the inspection of the vehicle.
Engine function test	An engine test run was performed.
readiness to drive	The vehicle was roadworthy at the time of inspection.

Value reducing factors

No.	Component group	Description
1	Body	Body (Vogelkot) - Paint defect - Smart repair
2	2nd wheel set	2 alloy rims - Scratched - Loss in value

Wear and tear

No.	Component group	Description
1	Front bumper	Front bumper - Stone chips - No deduction
2	Vehicle glazing	Windscreen - Stone chips - No deduction
3	Misc.	Main inspection (06.2026) - Due - No deduction

The vehicle shows signs of wear and tear commensurate with its age and use.

Order/Scope of Order

An order was placed to prepare a sales report for the described vehicle. This report includes the following:

- Description of key vehicle information
- Documentation of equipment features
(*Delivery by third-party service providers*)
- Documentation of damage, defects, missing parts
- Documentation of prior damage, unrepaired prior damage, repainting
- A brief visual or functional inspection of the equipment details, if possible.
(*Functional testing of driver assistance systems is not included in the scope of services!*)
- a photographic documentation of the vehicle



Basis for the order

This product is based on the guidelines for vehicle returns and valuations published by Alphabet Fleet GmbH. The expert makes the specific findings in each individual case objectively, within the framework of the prescribed standards, based on their own expertise.

The vehicle inspection takes place in a fully assembled, unassembled state.

Damage or defects that can only be detected during disassembly/diagnostic work or through further investigation remain within the realm of prognostic risk. An increased risk exists due to concealed defects caused by fraudulent misrepresentation and which were not identifiable by the expert.

Damage or defects resulting from normal use or wear and tear of the vehicle will be accepted in accordance with the applicable standard.

There was no explicit identification or monetary consideration of the expected features within the product.

Features which, in their nature and extent, slightly exceed normal use but do not constitute unacceptable damage, will be documented and indicated as signs of wear, if applicable.

Damage or defects that, according to the applicable standard, can no longer be attributed to normal use or wear and tear are listed under "Value Reducing Factors" in the product description.

Depending on the product specification, a monetary ID can be provided. If this takes place, the costs can be 100% d or pro rata depending on the vehicle's age and mileage.

Previous damages

No apparent prior damage that had been repaired could be found on the vehicle.

Comments

- Für den montierten Radsatz wurde kein Nachweis erbracht.
- Winterradsatz ist kein Bestandteil des Auslieferungsumfangs.



Figure 1: Diagonal front (left)



Figure 2: Diagonal front (right)



Figure 3: Diagonal rear (left)



Figure 4: Diagonal rear (right)



Figure 5: Interior - front



Figure 6: Interior - front



Figure 7: Interior - rear



Figure 8: Interior - rear



Figure 9: Instrument cluster

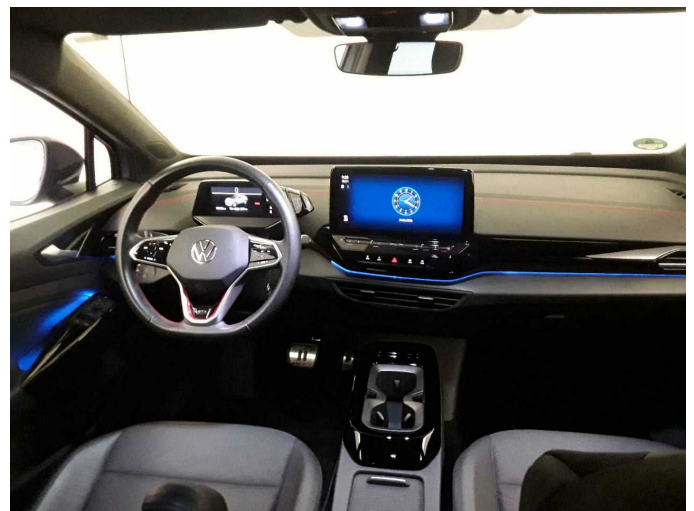


Figure 10: Instrument panel



Figure 11: Instrument panel



Figure 12: Interior 360° view



Figure 13: Cargo area



Figure 14: Cargo area

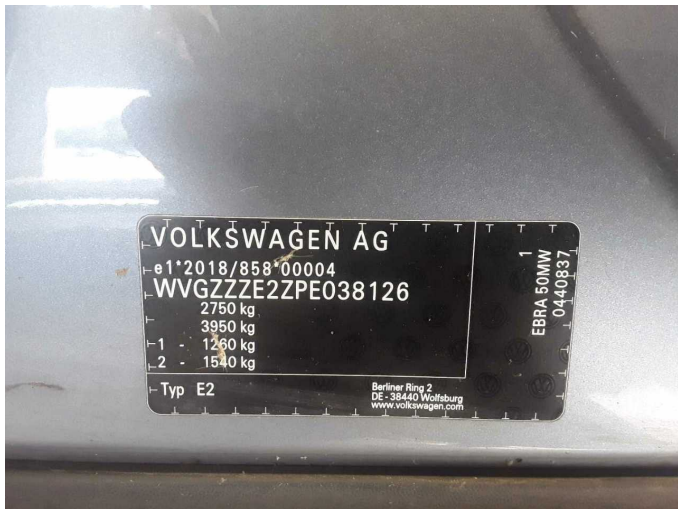


Figure 15: VIN



Figure 16: Mounted tyres



Figure 17: Mounted tyres

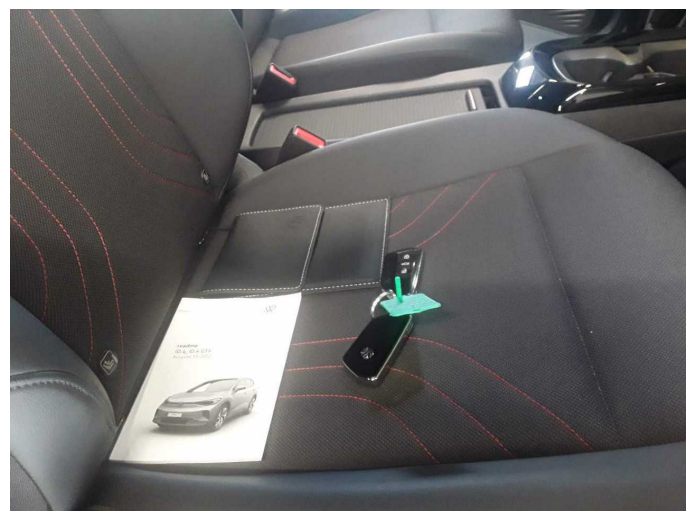


Figure 18: Documents



Figure 19: Additional tyres



Figure 20: Navigation



Figure 21: Misc.

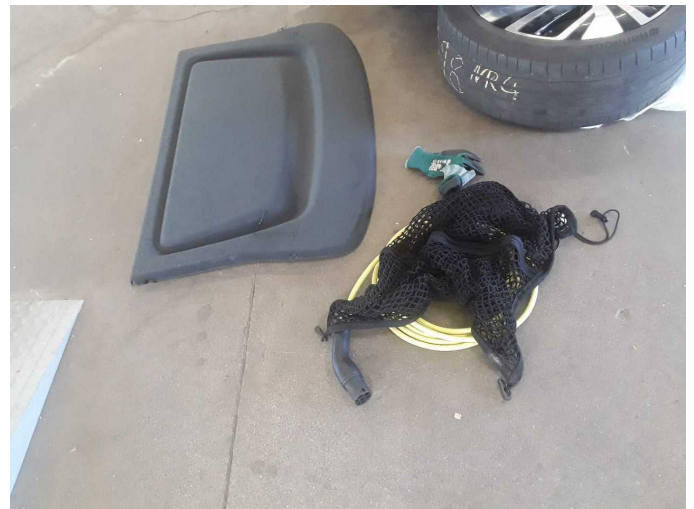


Figure 22: Misc.



Figure 23: Misc.

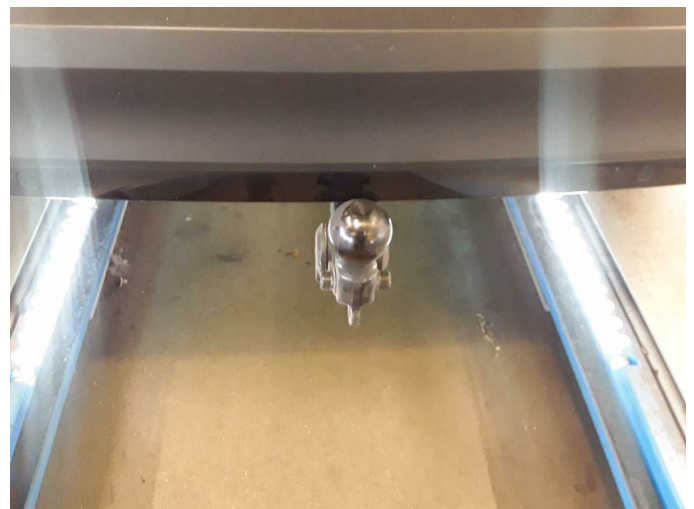


Figure 24: Misc.



Figure 25: Misc.



Figure 26: Misc.



Figure 27: Misc.



Figure 28: Misc.



Figure 29: Misc.



Figure 30: Misc.



Figure 31: Misc.

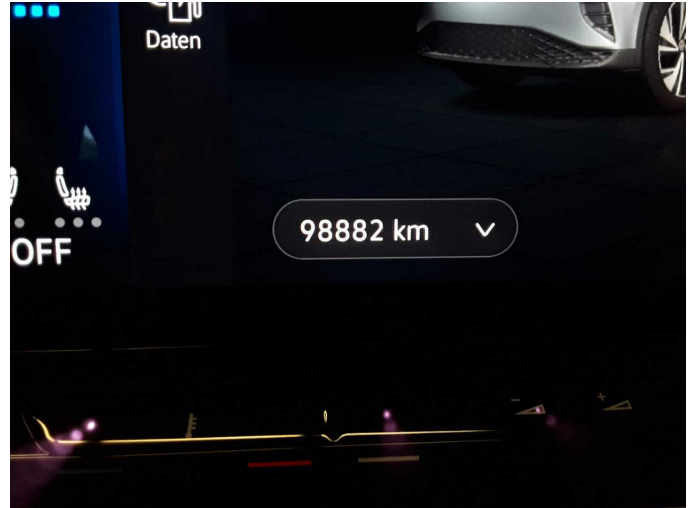
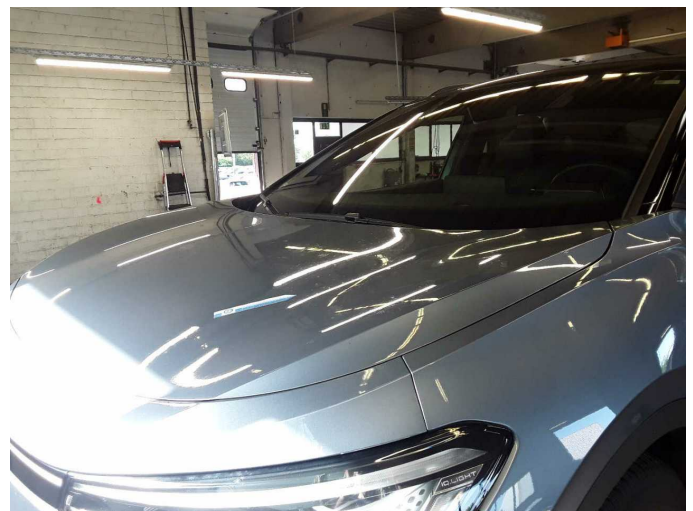


Figure 32: Misc.



Figure 33: Misc.



Damage 1: Body: Body (Vogelkot) - Paint defect - Smart repair



Damage 1: Body: Body (Vogelkot) - Paint defect - Smart repair



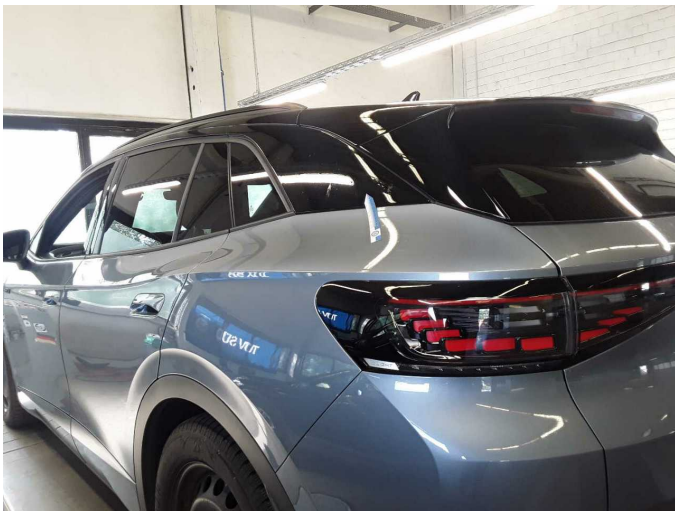
Damage 1: Body: Body (Vogelkot) - Paint defect - Smart repair



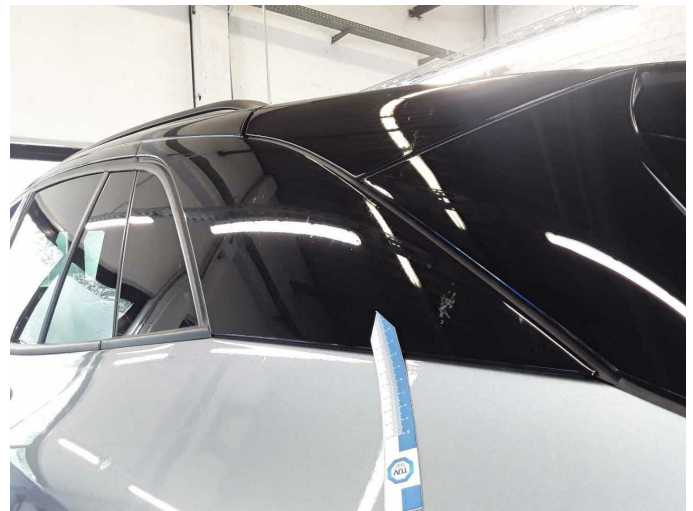
Damage 1: Body: Body (Vogelkot) - Paint defect - Smart repair



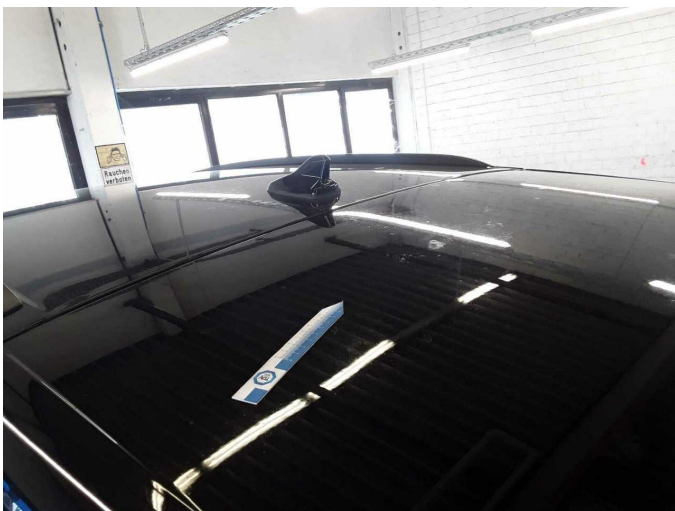
Damage 1: Body: Body (Vogelkot) - Paint defect - Smart repair



Damage 1: Body: Body (Vogelkot) - Paint defect - Smart repair



Damage 1: Body: Body (Vogelkot) - Paint defect - Smart repair



Damage 1: Body: Body (Vogelkot) - Paint defect - Smart repair



Damage 1: Body: Body (Vogelkot) - Paint defect - Smart repair



Damage 1: Body: Body (Vogelkot) - Paint defect - Smart repair



Damage 2: 2nd wheel set: 2 alloy rims - Scratched - Loss in value



Damage 2: 2nd wheel set: 2 alloy rims - Scratched - Loss in value



Damage 2: 2nd wheel set: 2 alloy rims - Scratched - Loss in value



Damage 2: 2nd wheel set: 2 alloy rims - Scratched - Loss in value



Damage 2: 2nd wheel set: 2 alloy rims - Scratched - Loss in value



Wear and tear 1: Front bumper: Front bumper - Stone chips - No deduction



Wear and tear 1: Front bumper: Front bumper - Stone chips - No deduction



Wear and tear 2: Vehicle glazing: Windscreen - Stone chips - No deduction



Wartungshistorie

(gemäß Auftraggeber Informationen)

Fahrgestellnummer: WVGZZZE2ZPE038126

Hersteller / Modell: VOLKSWAGEN VOLKSWAGEN ID.4 GTX

Datum	KM-Stand	Beschreibung
20.04.2026	97.707	Reparatur Sonstiges; Systemtest/Eigendiagnose
21.05.2025	65.415	Bremsflüssigkeit; Bremsflüssigkeit ern; Regelwartungsdienst