

## Expertise

Protocol number: 46184537  
Order No. / Reference: 26467004  
Inspection date: 19 Jun 2026

Manufacturer: Mercedes-Benz

Model: GLE 350 de 4Matic 9G-TRONIC

VIN: W1N1671171A430191



### Vehicle details

#### Manufacturer / Type / Model / Equipment

Mercedes-Benz GLE 350 de 4Matic 9G-TRONIC

**Vehicle Identification number** W1N1671171A430191

**Mileage (Read)** 232,155 km

**First registration** 7 Oct 2021

**Number of holders** 1

**Power / Engine displacement** 143 kw / 1,950 ccm

**Fuel type / Cylinder** Hybr.D/E ext.auf1 / 4

**Gearbox / Number of gears** Automatic / 9

**Type of drive** All-wheel drive

**Type of vehicle** SUV

**Colour / colour code** Schwarz

**Doors / Seats** 5 / 5

**Upholstery type** Artificial leather

**Colour of upholstery** Black



## Vehicle details

<b>Maintenance booklet / proof</b>	digital proof / complete	<b>Next maintenance in</b>	247 Tag(e)
<b>Last service on / at</b>	02/2026 at 226,983 km		
<b>Key is / should be</b>	2 / 2	<b>FZG documents</b>	ZB#2 (B) was available (copy), ZB#1 (S) was not available.
		<b>Letter No.</b>	GC574984
<b>Previous damage / Accident</b>	Detectable	<b>Repainting</b>	None detectable
<b>Inspection conditions</b>	sufficient	<b>Lifting equipment / pit</b>	No
<b>Test drive</b>	Not performed	<b>Engine function test</b>	Performed
<b>Manufacturer key number/ type code number</b>	2222 / AQC 00235		
<b>Emission standard</b>	EURO6;WLTP;AP;PI/CI; M, N1 I	<b>fine dust sticker</b>	
<b>Permitted total weight</b>	3,260 kg	<b>Empty weight</b>	

## Tyres

### Mounted tyres

#	Tyre size	Type of tyre	Manufacturer	Tread depth
1)	275/50 R20 113V	Winter tyres on Light alloy	Continental	6mm / 6mm
2)	275/50 R20 113V	Winter tyres on Light alloy	Continental	6mm / 6mm

### Additional tyres

#	Tyre size	Type of tyre	Manufacturer	Tread depth
1)	275/50 R20 113W	Summer tyres on Light alloy	Michelin	5mm / 5mm
2)	275/50 R20 113W	Summer tyres on Light alloy	Michelin	5mm / 5mm

### Replacement

Typ	Tyre size	Type of tyre	Manufacturer	Tread depth
	Tirefit	Expiration date 11/2020		

**Legend: Tread depth information for the left tire is listed first, for the right tire it is listed second on the axle in the direction of travel.**



## Equipment

### Standard equipment

- Exhaust system with 2 chrome-plated tailpipe trims
- Adaptive Highbeam Assist
- Airbag: Driver and passenger side
- Airbag: Sidebag for driver and front passenger (combined thorax/pelvisbag)
- Active Lane Keeping Assist
- 4MATIC permanent all-wheel drive
- Anti-lock braking system
- Foldable armrest for driver and front passenger
- ATTENTION ASSIST
- Electrically adjustable and heated exterior mirrors
- Roof rails in aluminum look
- Downhill Speed Regulation (DSR)
- Third brake light
- EASY-Pack cargo cover (removable)
- ECO start/stop function
- Electronic Stability Program
- Electronic traction system for all-wheel drive (4ETS)
- Electric windows, front and rear
- Velour floor mats
- Transmission: 9G-TRONIC
- Rear window heated
- Rear window wiper with intermittent function
- Mechanical child safety lock in the rear doors
- Communication module (LTE) for the use of Mercedes me connect services
- Paint finish: Solid
- Charging cable for wallbox and public charging stations, 5m, smooth (This charging cable, also called Mode 3 cable, allows you to charge the vehicle battery at the wallbox or at public charging stations with up to 11 kW (Type 2, 3-phase, 20 A).)
- Steering wheel: Multifunction sports steering wheel in Nappa leather
- Mercedes-Benz emergency call system
- Navigation accessories: Pre-installation for navigation services
- Package: Parking package with reversing camera
- Package: Mirror Package
- PRE-SAFE system
- Radio accessories: Additional USB ports
- Remote Services Plus
- Windscreen wipers with rain sensor
- 3-point seat belts
- Seats: Comfort seats
- Seats: Rear seat backrests foldable
- Phone accessories: Smartphone integration
- High-visibility vest for drivers
- Widescreen Cockpit
- Central locking with interior switch
- ADAPTIVE BRAKE
- Adaptive brake light
- Airbag: Kneebag for driver
- Airbag: Windowbags
- Active Brake Assist
- Acoustic environmental protection
- Ambient lighting
- Traction control (ASR)
- Rear armrest
- Automatic passenger airbag deactivation
- Brake Assist BAS
- Diesel particulate filter
- Tachometer
- EASY-Pack tailgate with electric operation for opening and closing
- Front door sills with "Mercedes-Benz" lettering illuminated in white
- Chassis with steel springs and lowered suspension
- electric parking brake
- Speed Limit Assistant
- Lockable, air-conditioned and illuminated glove compartment
- KEYLESS-GO start function
- Climate: THERMATIC automatic climate control
- Headrests 5-way
- Radiator grille with 2 chrome-plated louvers in SUV design
- Charging cable for household socket, 5m, smooth (This charging cable, also called Mode 2 cable, allows you to charge the vehicle battery at the household socket with up to 2.3 kW (230 V, 1-phase, 10 A) and fits sockets of type E/F CEE 7/7.)
- Charging system: AC on-board charger 7.4 kW
- Steering column mechanically adjustable lengthwise and heightwise.
- Navigation accessories: Extended MBUX functions
- Navigation: Hard disk navigation
- Package: Chrome
- Package: Public Charging
- Upholstery: ARTICO black leatherette
- Radio accessories: Digital radio (DAB)
- Tire pressure monitoring system (TPMS)
- Rear view camera
- Power steering
- Seats: 4-way lumbar support for driver and front passenger
- Seats: Heated seats for driver and front passenger seats
- Seats: Front seats electrically adjustable
- Cruise control with variable speed limiter
- Immobiliser
- Heat-insulating glass, all around
- Decorative elements: Brushed aluminum with light longitudinal grain



## Extra equipment

- Airbag: Sidebags in the rear, left and right
- Head-up display (lens and mirror system projects a virtual image into the driver's field of vision - full-color display that is easily readable even on sunny days and at night - depending on the equipment, display of, for example, navigation instructions, speed, speed limits or settings of cruise control or active distance assist DISTRONIC)
- MULTIBEAM LED (84 individually controllable high-performance LEDs per headlight - low beam and high beam in LED projection technology - Adaptive Highbeam Assist Plus - ULTRA RANGE high beam with a range of 650 m (maximum legally permissible beam range) - cornering light or cornering light with roundabout and intersection function - active curve illumination - extended fog light, city light, country road light, motorway light and bad weather light - off-road light - adaptive full-LED taillights)
- Package: AMG Line Exterior (diamond grille with chrome pins, integrated Mercedes star and one louvre painted in matte iridium silver with chrome inserts - AMG Styling: AMG front apron with chrome trim strip, sporty and distinctive air intakes in the wheel arch trims, fender flares front and rear in body paint, AMG side sill trims, AMG rear apron with diffuser-look insert in black and chrome trim strip - AMG light-alloy wheels in 5-twin-spoke design, painted tremolite grey and polished with front axle 275/50 R 20 on 9 J x 20 ET 57, rear axle 275/50 R 20 on 9 J x 20 ET 44)
- Package: Driving Assistance Package Plus (Active Distance Assist DISTRONIC - Active Steering Assist - Active Brake Assist - Evasive Steering Assist - Active Lane Keeping Assist - Active Blind Spot Assist - PRE-SAFE PLUS - Active Traffic Jam Assist)
- Package: Night (Diamond grille with chrome pins and high-gloss black louvre; AMG light-alloy wheels in 5-twin-spoke design, high-gloss black lacquer and gloss black, with front axle 275/50 R 20 on 9.0 x 20 ET 57, rear axle 275/50 R 20 on 9.0 x 20 ET 44; AMG front windscreen in A-wing design with high-gloss black trim strip; AMG rear windscreen with high-gloss black diffuser and high-gloss black trim strip; air intakes in radiator grille and front windscreen; roof rails in matte black; heat-insulating dark-tinted glass from the B-pillar; exterior mirror housings in high-gloss black; window trim and beltline trim in black)
- Seats: Heated rear seats
- Partition net for luggage compartment separation and occupant protection
- Double sun visor (flexible glare protection for driver and front passenger)
- Instrument panel and door sills in ARTICO leatherette (Instrument panel in ARTICO leatherette - Door sills in ARTICO leatherette)
- Climate: THERMOTRONIC automatic climate control (4-zone automatic climate control: enables individually adjustable climate control for the driver and front passenger sides as well as for the left and right sides in the rear - Sensors for detecting, e.g., interior/ exterior temperature, solar radiation, humidity and for checking air quality - Fine dust activated carbon filter for filtering dust, soot and pollen as well as for reducing pollutants and odors - Residual heat function for efficient use of engine waste heat (activated via residual heat button))
- Package: AIRMATIC package (air suspension system with adaptive damping system ADS+ - automatic level control, depending on - payload: load detection for a constant chassis level - driving speed: lowering for higher driving speeds - DYNAMIC SELECT driving program: lowering in the "Sport"/"Sport plus" program or raising in the "Offroad"/"Offroad plus" program - demand-based level control: - rear lowering for loading and unloading - individual selection of the chassis level)
- Package: ENERGIZING Package (ENERGIZING Comfort Programs: -Freshness -Vitality -Training: Video instructions, e.g., for muscle relaxation (only available when stationary) -Tips: 3-minute audio information for the sustainable promotion of health and well-being in everyday life; for the body regions head, shoulders, upper body, lower back and pelvis -Seat heating for driver and front passenger -AIR-BALANCE package for fragrance, ionization and purification of the air -Ambient lighting with program-specific light.)
- Package: Warmth Comfort Package (Seat heating Plus for driver and front passenger: includes seat cushion and seat back - Armrest heating for driver and front passenger: includes armrests of the doors, the center console and the door center panels)
- Upholstery: ARTICO man-made leather
- Wheels: 50.8 cm (20") AMG light-alloy wheels in 5-twin-spoke design (painted black high-gloss and polished with front axle 275/50 R 20 on 9.0 J x 20 ET 57, rear axle 275/50 R 20 on 9.0 J x 20 ET 44)
- Heat-insulating dark tinted glass



## Brief expert findings

Documents submitted	At the time of the inspection, the vehicle registration certificate Part 2 (title) was available, but the vehicle registration certificate Part 1 (document) was not. (Copy)
VIN comparison	The vehicle identification number (VIN) was read from the vehicle and its conformity with the submitted documents was confirmed by the undersigned during the inspection.
Inspection	The inspection conditions were sufficient for the assessment of the vehicle. No lifting equipment or pit was available for inspecting the vehicle. Therefore, inspection of the vehicle's underside was only possible to a limited extent.
Test drive	No test drive/shunting maneuver was carried out during the inspection of the vehicle.
Engine function test	An engine test run was performed.

## Value reducing factors

No.	Component group	Description
1	Equipment	Tirefit filler (Nicht Bestandteil der Ausstattung) - Expired - Replace
2	Seat - front	Seat cover - left side - Broken / torn - Replace

## Wear and tear

No.	Component group	Description
1	Front bumper	Front bumper - Stone chips - No deduction
2	Bonnet	Bonnet - Stone chips - No deduction
3	Vehicle glazing	Windscreen - Stone chips - No deduction
4	Interior	Interior - Soiled - No deduction
5	Side panel - rear left side	Side panel - Scratch(es) - No deduction
6	Rear bumper	Rear bumper - Scratch(es) - No deduction

The vehicle shows signs of wear and tear commensurate with its age and use.

## Missing parts

### Description

Equipment - charging cable (Kabel für Haushaltssteckdose)

Equipment - charging cable (Kabel für öffentliche Ladestationen/Wallboxes)

## Previous damages

No.	Previous damage	Extent of damage (Net)
1	Front, Provided by user / customer, from 26 May 2025	1.969,82 €
2	Rear, Side right, Provided by user / customer, from 15 Apr 2026	2.303,99 €

## Order/Scope of Order

An order was placed to prepare a sales report for the described vehicle. This report includes the following:

- Description of key vehicle information
- Documentation of equipment features  
(*Delivery by third-party service providers*)
- Documentation of damage, defects, missing parts
- Documentation of prior damage, unrepaired prior damage, repainting
- A brief visual or functional inspection of the equipment details, if possible.  
(*Functional testing of driver assistance systems is not included in the scope of services!*)
- a photographic documentation of the vehicle



## Basis for the order

This product is based on the guidelines for vehicle returns and valuations published by Alphabet Fleet GmbH. The expert makes the specific findings in each individual case objectively, within the framework of the prescribed standards, based on their own expertise.

The vehicle inspection takes place in a fully assembled, unassembled state.

Damage or defects that can only be detected during disassembly/diagnostic work or through further investigation remain within the realm of prognostic risk. An increased risk exists due to concealed defects caused by fraudulent misrepresentation and which were not identifiable by the expert.

Damage or defects resulting from normal use or wear and tear of the vehicle will be accepted in accordance with the applicable standard.

There was no explicit identification or monetary consideration of the expected features within the product.

Features which, in their nature and extent, slightly exceed normal use but do not constitute unacceptable damage, will be documented and indicated as signs of wear, if applicable.

Damage or defects that, according to the applicable standard, can no longer be attributed to normal use or wear and tear are listed under "Value Reducing Factors" in the product description.

Depending on the product specification, a monetary ID can be provided. If this takes place, the costs can be 100% d or pro rata depending on the vehicle's age and mileage.

## Previous damages

According to available information previous damages were repaired at the vehicle. Traces of repairs, which allow conclusions about the area of repair, were not recognizable during the inspection.

## Comments

- Die Unterbodenbesichtigung war nur ebenerdig & eingeschränkt möglich. Mehrkosten möglich.
- Ein Nachweis über die Zulässigkeit des montierten Radsatzes wurde nicht erbracht.
- Der angegebene Winterradsatz ist kein Bestandteil des Auslieferungsumfangs.



Figure 1: Diagonal front (left)



Figure 2: Diagonal front (right)



Figure 3: Diagonal rear (left)



Figure 4: Diagonal rear (right)



Figure 5: Interior - front



Figure 6: Interior - rear



Figure 7: Instrument cluster



Figure 8: Instrument panel



Figure 9: Interior 360° view



Figure 10: Cargo area

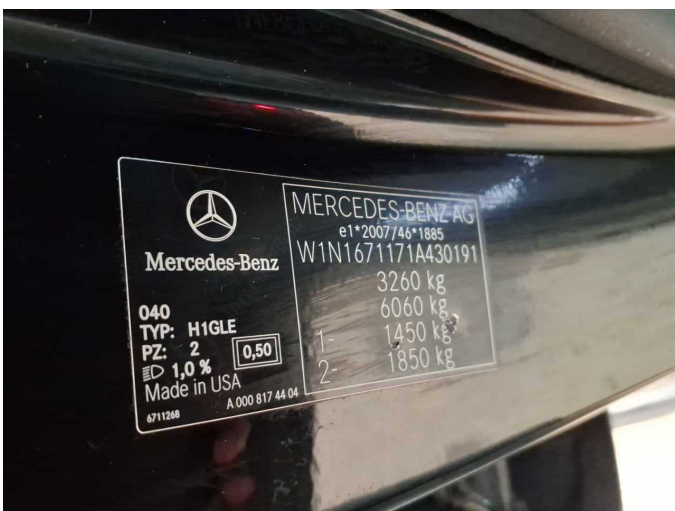


Figure 11: VIN

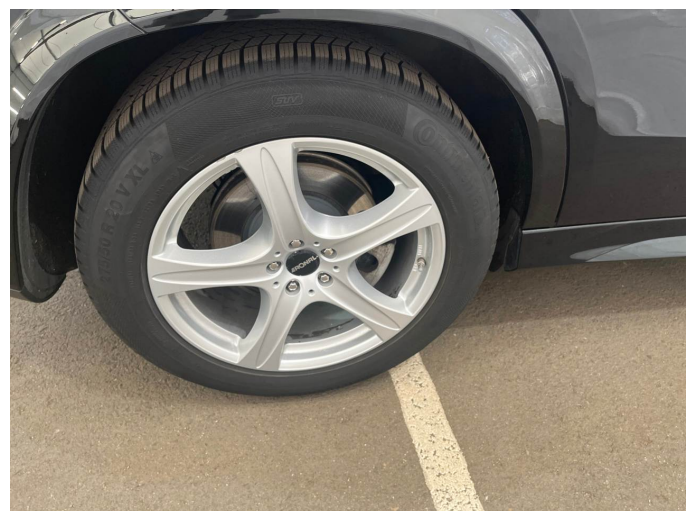


Figure 12: Mounted tyres



Figure 13: Documents



Figure 14: Documents



Figure 15: Additional tyres



Figure 16: Navigation



Figure 17: Misc.



Figure 18: Misc.



Figure 19: Misc.



Figure 20: Misc.



Figure 21: Misc.

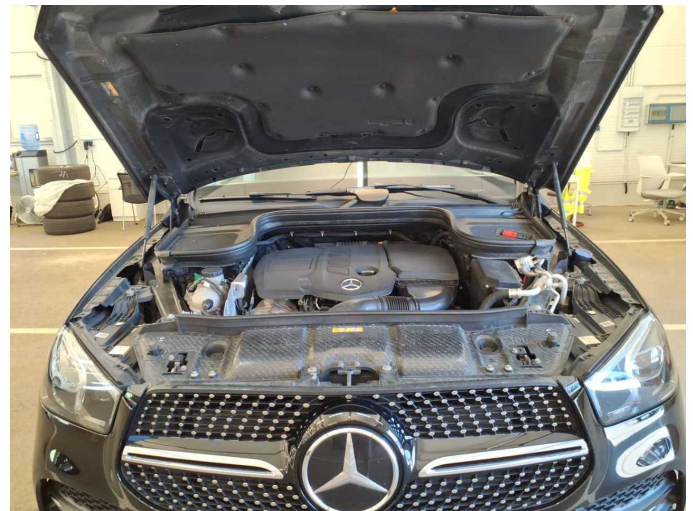


Figure 22: Misc.

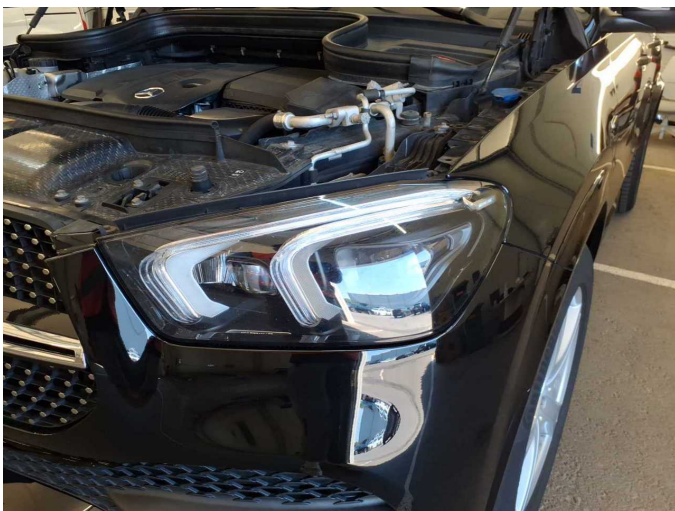


Figure 23: Misc.



Figure 24: Misc.



Figure 25: Misc.



Figure 26: Misc.



Figure 27: Misc.



Figure 28: Misc.

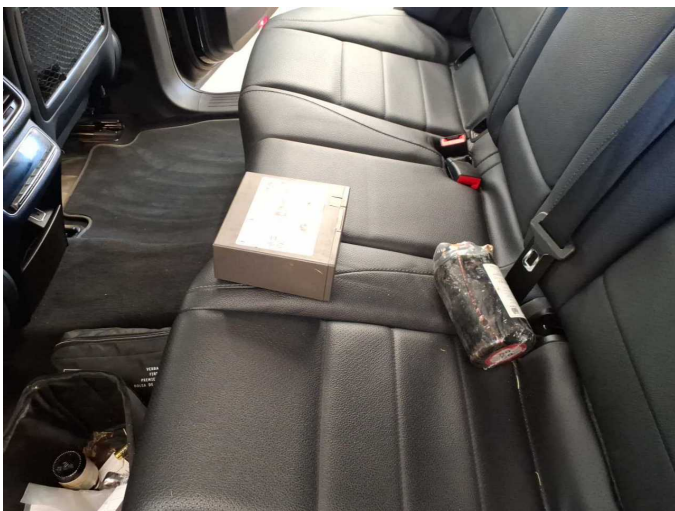


Figure 29: Misc.



**Damage 1: Equipment: Tirefit filler (Nicht Bestandteil der Ausstattung) - Expired - Replace**



**Damage 2:** Seat - front: Seat cover - left side - Broken / torn - Replace



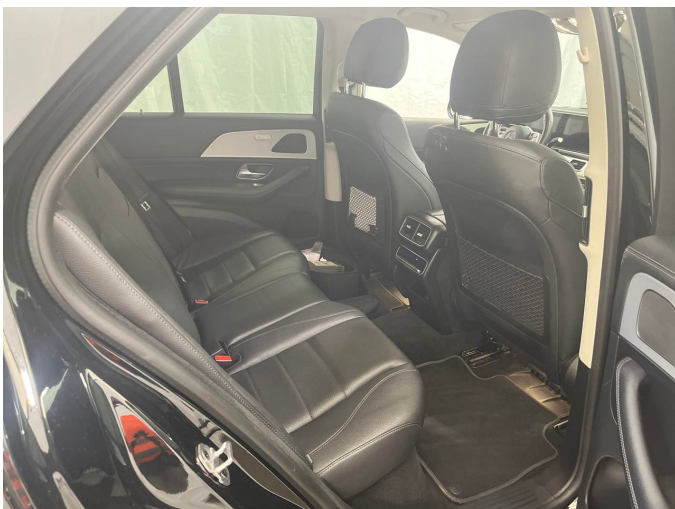
**Damage 2:** Seat - front: Seat cover - left side - Broken / torn - Replace



**Damage 2:** Seat - front: Seat cover - left side - Broken / torn - Replace



**Missing part 1:** Equipment: charging cable (Kabel für Haushaltssteckdose) - Missing - Replace



**Missing part 1:** Equipment: charging cable (Kabel für Haushaltssteckdose) - Missing - Replace



**Missing part 2:** Equipment: charging cable (Kabel für öffentliche Ladestationen/Wallboxes) - Missing - Replace



**Missing part 2:** Equipment: charging cable (Kabel für öffentliche Ladestationen/Wallboxes) - Missing - Replace



# Wartungshistorie

(gemäß Auftraggeber Informationen)

Fahrgestellnummer: W1N1671171A430191

Hersteller / Modell: MERCEDES-BENZ MB GLE 350 de 4Matic 9G-TRONIC

Datum	KM-Stand	Beschreibung
30.03.2026	230.230	Ladeluftschlauch ern; Reparatur Sonstiges; Systemtest/Eigendiagnose
24.02.2026	227.003	Reparatur Sonstiges; Systemtest/Eigendiagnose; Wasserpumpe ern
14.02.2026	226.983	Regelwartungsdiens
10.01.2026	223.711	Bremsscheiben+Beläge v+h
25.08.2025	202.909	Regelwartungsdiens
26.06.2025	195.095	Bremsentest; Getriebeöl ern/prüfen; Systemtest/Eigendiagnose
28.01.2025	177.068	Regelwartungsdiens
23.10.2024	161.233	AU
09.09.2024	155.181	Systemtest/Eigendiagnose
27.08.2024	149.509	Regelwartungsdiens
27.03.2024	131.541	Systemtest/Eigendiagnose
20.02.2024	128.258	Regelwartungsdiens
07.12.2023	117.773	Bremsklötze vorne
31.07.2023	102.515	Regelwartungsdiens
20.02.2023	78.843	Regelwartungsdiens
11.08.2022	51.499	Regelwartungsdiens
21.03.2022	25.625	Regelwartungsdiens