

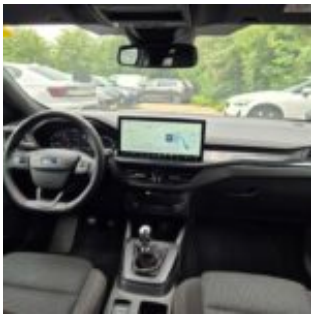
2-DRE-519

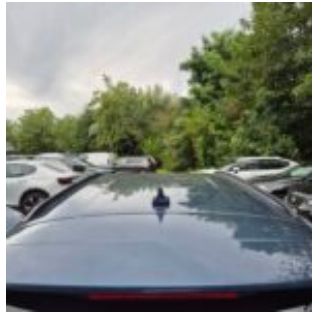
2-DRE-519 · ST-line 125pk 92kw mHEV M6 Clipper · 30 June 2026 · Zaventem (BE)

Specifications

License Plate Number	2-DRE-519	Fuel Type	Hybrid Gasoline
Manufacturer	FORD	VIN	WF0PXXGCHPPL84312
Model	Focus	Cylinder Capacity	999 ^{cm³}
Model Versions	ST-line 125pk 92kw mHEV M6 Clipper	Transmission Type	Handmatig geschakelde transmissie
Body Type	5 door hatchback	First Admission	02-06-2023
Color	Blue	Odometer	77.284 ^{Km}
Paint Type	Metallic	Numer Of Keys	2
Production Year	2023	Interior	Black
KW	92	Number Headrests	5

Images





Accessories

ABS

Airbags

Alloy wheels

Audio System

Automatic air conditioning

Bluetooth car kit

Central door locking

Centre armrest

Cruise control

Electric rear windows

Electric windows front

Electrically adjustable exterior mirrors

Front & rear parking sensors

Leather steering wheel

Navigation system

Roller cover / parcel shelf

Seat heating

Steering wheel multifunction

Steeringwheel - Heated

Windscreen - Heated

Condition

Condition exterior Adequate

Condition interior Adequate

Last Maintenance Unknown

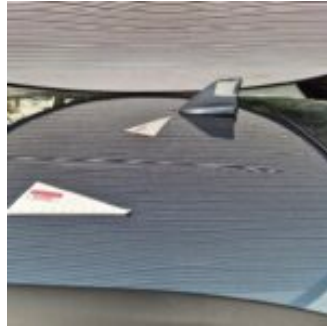
Previous Repairs

Unknown

Tire Specifications

Tire	Profile	Brand	Width	Aspect Ratio	Radial	Type
Front Left	6 ^{mm}	Vredestein	215 ^{mm}	50 ^{mm}	17 ^{inch}	All Season
Rear Left	6 ^{mm}	Vredestein	215 ^{mm}	50 ^{mm}	17 ^{inch}	All Season
Front Right	6 ^{mm}	Vredestein	215 ^{mm}	50 ^{mm}	17 ^{inch}	All Season
Rear Right	6 ^{mm}	Vredestein	215 ^{mm}	50 ^{mm}	17 ^{inch}	All Season
Spare Tire Type		None				

Damages



Damage Part

Roof

Damage Type

Small dent(s)

Repair Type

Restyle

Acceptable

No



Damage Part

Alloy - Left Rear

Damage Type

Damaged

Repair Type

Rim repair

Acceptable

No



Damage Part

Fender - Rear Left

Damage Type

Small scratch(es)

Repair Type

Touch-up / Polish

Acceptable

No



Damage Part

Damage Type

Repair Type

Acceptable

Reardoor - Left

Scratch(es)

Spray

No



Damage Part

Damage Type

Repair Type

Acceptable

Frontdoor - Left

Small scratch(es)

Polish

No



Damage Part

Damage Type

Repair Type

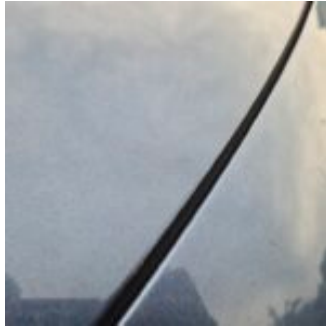
Acceptable

Alloy - Left Front

Damaged

Acceptable

Yes



Damage Part

Damage Type

Repair Type

Acceptable

Hood

Stonechipping

Acceptable

Yes



Damage Part

Damage Type

Repair Type

Acceptable

Bumper - Front

Scratch(es)

Spray

No



Damage Part

Damage Type

Repair Type

Acceptable

Skirt - Right

small dents / small scratches

Panelbeating & Spray

No



Damage Part

Damage Type

Repair Type

Acceptable

Alloy - Right Front

Damaged

Rim repair

No



Damage Part

Damage Type

Repair Type

Acceptable

Fender - Front Right

Scratch(es)

Spray

No



Damage Part

Damage Type

Repair Type

Acceptable

Frontdoor - Right

small dents / small scratches

Panelbeating & Spray

No



Damage Part

Alloy - Right Rear

Damage Type

Damaged

Repair Type

Acceptable

Acceptable

Yes



Damage Part

Bumper - Rear



Damage Type

Scratch(es)



Repair Type

Spray

Acceptable

No



Damage Part

Tailgate



Damage Type

Scratch(es)

Repair Type

Spray

Acceptable

No



Damage Part

Skirt - Right

Damage Type

Small scratch(es)

Repair Type

Spray

Acceptable

No