

## Expertise

Protocol number: 45919315  
Order No. / Reference: 26466894  
Inspection date: 11 Jun 2026

Manufacturer: Ford

Model: Focus Turnier 1.5 EcoBlue Start-Stopp-System Aut.  
COOL&CONNECT

VIN: WF0PXXGCHPNB02089



### Vehicle details

#### Manufacturer / Type / Model / Equipment

Ford Focus Turnier 1.5 EcoBlue Start-Stopp-System Aut.  
COOL&CONNECT

<b>Vehicle Identification number</b>	WF0PXXGCHPNB02089
<b>Mileage (Read)</b>	106,018 km
<b>First registration</b>	19 Jan 2023
<b>Number of holders</b>	1

<b>Power / Engine displacement</b>	88 kw / 1,499 ccm
<b>Fuel type / Cylinder</b>	Diesel / 4
<b>Gearbox / Number of gears</b>	Automatic / 8
<b>Type of drive</b>	Front drive
<b>Type of vehicle</b>	Station wagon

<b>Colour / colour code</b>	Moondust Silber Metallic
<b>Doors / Seats</b>	5 / 5
<b>Upholstery type</b>	Cloth
<b>Colour of upholstery</b>	Anthracite-Grey



## Vehicle details

<b>Maintenance booklet / proof</b>	digital proof / complete	<b>Next maintenance in</b>	30 %
<b>Last service on / at</b>	08/2025 at 84,873 km		
<b>Key is / should be</b>	2 / 2	<b>FZG documents</b>	ZB#2 (B) was available (copy), ZB#1 (S) was not available.
		<b>Letter No.</b>	GP453318
<b>Previous damage / Accident</b>	Detectable	<b>Repainting</b>	Detectable
<b>Inspection conditions</b>	sufficient	<b>Lifting equipment / pit</b>	No
<b>Test drive</b>	Not performed	<b>Engine function test</b>	Performed
<b>Manufacturer key number/ type code number</b>	8566 / BPV 00636		
<b>Emission standard</b>	EURO6;WLTP;AP;PI/CI; M, N1 I	<b>fine dust sticker</b>	
<b>Permitted total weight</b>	2,035 kg	<b>Empty weight</b>	

## Tyres

### Mounted tyres

#	Tyre size	Type of tyre	Manufacturer	Tread depth
1)	205/60 R16 96H	Winter tyres on Light alloy	Pirelli	5mm / 5mm
2)	205/60 R16 96H	Winter tyres on Light alloy	Pirelli	6mm / 6mm

### Additional tyres

#	Tyre size	Type of tyre	Manufacturer	Tread depth
1)	205/60 R16 92V	Summer tyres on Light alloy	Goodyear	5mm / 5mm
2)	205/60 R16 92V	Summer tyres on Light alloy	Goodyear	6mm / 6mm

### Replacement

Typ	Tyre size	Type of tyre	Manufacturer	Tread depth
N	125/70 R16 96M	Summer tyres on Steel	Hankook	4 mm

**Legend: Tread depth information for the left tire is listed first, for the right tire it is listed second on the axle in the direction of travel.**



## Equipment

### Standard equipment

- Airbag: Passenger airbag deactivation
- Exterior mirrors in body color, driver and passenger side, electrically adjustable and heated
- Tires: 6.5 J x 16 design wheels (4) with 205/60 R16 tires
- Hill start assist
- Roof rails, black
- Diesel particulate filter (DPF)
- Electronic Shifter
- Driver information system with on-board computer, color (10.7 cm screen diagonal)
- Electronic parking brake
- Luggage compartment cover
- Speed limiter
- Transmission: 8-speed automatic transmission
- Back window, heater
- Interior lighting with LED technology
- Isofix bracket
- Headrests: 2 front and 3 rear, height adjustable
- LED headlights
- Steering wheel: 3-spoke design
- Make-up mirrors in driver and passenger sun visors
- MyKey key system (individually programmable second key)
- Upholstery: Cloth
- Pre-Collision Assist
- Tire repair kit
- Tire Pressure Monitoring System (TPMS)
- Electromechanical speed-dependent power steering
- Seats: Driver's seat height adjustable
- Seats: Rear seat backrest
- Seats: Front sports seats with enhanced lateral support
- 12-volt power outlet in the luggage compartment
- Lashing eyes in the luggage compartment
- Electronic immobilizer
- Central locking with remote control and remote luggage compartment release

### Extra equipment

- Paint finish: Metallic
- Rear view camera
- Safety partition net for luggage compartment
- Tires: 6.5 J x 16 alloy wheels (4) with 205/60 R16 tires (in 10-spoke design)
- Wheels: Emergency spare wheel (permitted for use up to max. 80 km/h - steel wheel 3.5 J x 16 with 125/70 R16 tire)

- Anti-lock braking system (ABS) with electronic brake force distribution (EBD)
- Attachment points behind the second row of seats for mounting the safety partition net
- Fabric headliner
- Roof spoiler painted in car color
- Tachometer
- Electronic Safety and Stability Program (ESP)
- Lane keeping assist including lane keeping assist
- Electric windows front and rear
- FordPass Connect including eCall, live traffic information (only with navigation) and Wi-Fi hotspot
- Cruise control
- Illuminated glove compartment
- Rear window wiper
- Intelligent security system
- Air conditioning, manual
- Paint finish: Solid
- Leather gear knob
- Adjustable steering column
- Center console "Premium" front
- Front and rear parking pilot system
- Post-Collision Assist
- Radio: Ford SYNC 3 Light with AppLink, 8" touchscreen and DAB/DAB+
- Headlight assistant with day/night sensor
- Seats: Passenger seat height-adjustable, manually
- Seats: Map grid on the driver's and front passenger's seat backrests
- Start-stop system
- Carpet floor mats in the front
- Warning system for unfastened seat belts for the 1st and 2nd rows of seats

- Navigation: Ford SYNC 3 with AppLink, 8" touchscreen and DAB/DAB+ (Ford navigation system with AppLink, 8" touchscreen (20.3 cm screen diagonal) - 6 speakers - Android Auto and Apple CarPlay - Bluetooth hands-free system and audio streaming - Steering wheel controls - Radio player - USB port - Voice control via audio and telephone - Acoustic and visual route guidance, dynamic navigation with enhanced traffic information system, lane guidance and road map for Europe)



### Brief expert findings

Documents submitted	At the time of the inspection, the vehicle registration certificate Part 2 (title) was available, but the vehicle registration certificate Part 1 (document) was not. (Copy)
VIN comparison	The vehicle identification number (VIN) was read from the vehicle and its conformity with the submitted documents was confirmed by the undersigned during the inspection.
Inspection	The inspection conditions were sufficient for the assessment of the vehicle. No lifting equipment or pit was available for inspecting the vehicle. Therefore, inspection of the vehicle's underside was only possible to a limited extent.
Test drive	No test drive/shunting maneuver was carried out during the inspection of the vehicle.
Engine function test	An engine test run was performed.

### Value reducing factors

No.	Component group	Description
1	Trim / covers	Floor mats - Broken / torn - Replace
2	Door - front left side	Door edge - Scratch(es) - Smart repair
3	Roof	Roof - dent(s) - Smooth repair work
4	Door - rear right side	Door - Scratch(es) - Smart repair
5	Bonnet	Bonnet - dent(s) - Smooth repair work
6	Sill - left side	Sill - Dent / paintcoat damage - Smart repair
7	Rear bumper	Rear bumper - Dent / paintcoat damage - Repair and paint

### Wear and tear

No.	Component group	Description
1	Vehicle glazing	Windscreen - Stone chips - No deduction
2	Front bumper	Front bumper - Stone chips - No deduction

The vehicle shows signs of wear and tear commensurate with its age and use.

### Previous damages

No.	Previous damage	Extent of damage (Net)
1	Front, Provided by user / customer, from 4 Mar 2025	1.444,74 €
2	Side - left, Provided by user / customer, from 20 Sept 2023	2.066,72 €
3	Front, Provided by user / customer, from 10 Aug 2024	4.271,95 €

### Repainting

No.	Repainting
1	Bonnet, Professionally carried out, Invoice of repair done Non-existent

### Paint coat thickness measurement

Bonnet	535 µm
--------	--------



## Order/Scope of Order

An order was placed to prepare a sales report for the described vehicle. This report includes the following:

- Description of key vehicle information
- Documentation of equipment features  
*(Delivery by third-party service providers)*
- Documentation of damage, defects, missing parts
- Documentation of prior damage, unrepaired prior damage, repainting
- A brief visual or functional inspection of the equipment details, if possible.  
*(Functional testing of driver assistance systems is not included in the scope of services!)*
- a photographic documentation of the vehicle

## Basis for the order

This product is based on the guidelines for vehicle returns and valuations published by Alphabet Fleet GmbH. The expert makes the specific findings in each individual case objectively, within the framework of the prescribed standards, based on their own expertise.

The vehicle inspection takes place in a fully assembled, unassembled state.

Damage or defects that can only be detected during disassembly/diagnostic work or through further investigation remain within the realm of prognostic risk. An increased risk exists due to concealed defects caused by fraudulent misrepresentation and which were not identifiable by the expert.

Damage or defects resulting from normal use or wear and tear of the vehicle will be accepted in accordance with the applicable standard.

There was no explicit identification or monetary consideration of the expected features within the product.

Features which, in their nature and extent, slightly exceed normal use but do not constitute unacceptable damage, will be documented and indicated as signs of wear, if applicable.

Damage or defects that, according to the applicable standard, can no longer be attributed to normal use or wear and tear are listed under "Value Reducing Factors" in the product description.

Depending on the product specification, a monetary ID can be provided. If this takes place, the costs can be 100% or pro rata depending on the vehicle's age and mileage.

## Previous damages

According to available information previous damages were repaired at the vehicle. Traces of repairs, which allow conclusions about the area of repair, were not recognizable during the inspection.

## Comments

- Winterradsatz ist kein Bestandteil des Auslieferungsumfangs.



Figure 1: Diagonal front (left)



Figure 2: Diagonal front (right)



Figure 3: Diagonal rear (left)



Figure 4: Diagonal rear (right)



Figure 5: Interior - front



Figure 6: Interior - rear



Figure 7: Instrument cluster



Figure 8: Instrument panel



Figure 9: Interior 360° view



Figure 10: Cargo area



Figure 11: VIN



Figure 12: Mounted tyres



Figure 13: Documents

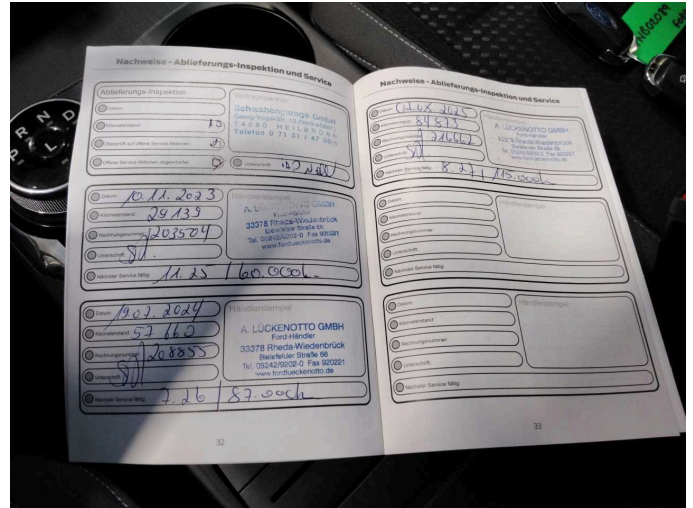


Figure 14: Documents



Figure 15: Additional tyres



Figure 16: Additional tyres



Figure 17: Navigation

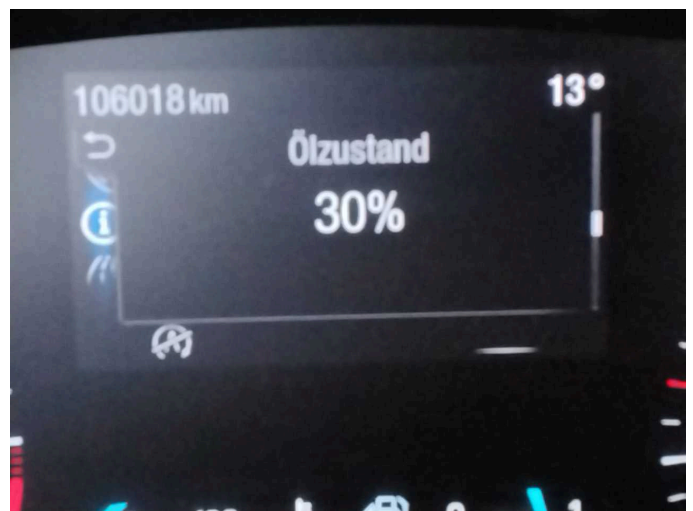


Figure 18: Misc.



Figure 19: Misc.



Figure 20: Misc.

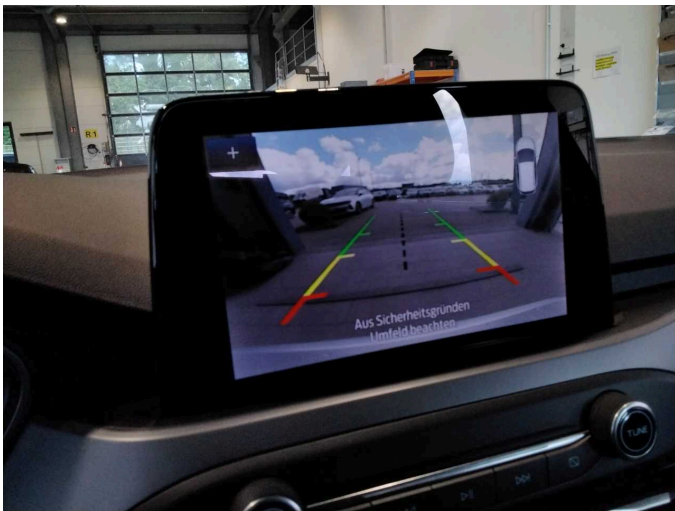


Figure 21: Misc.

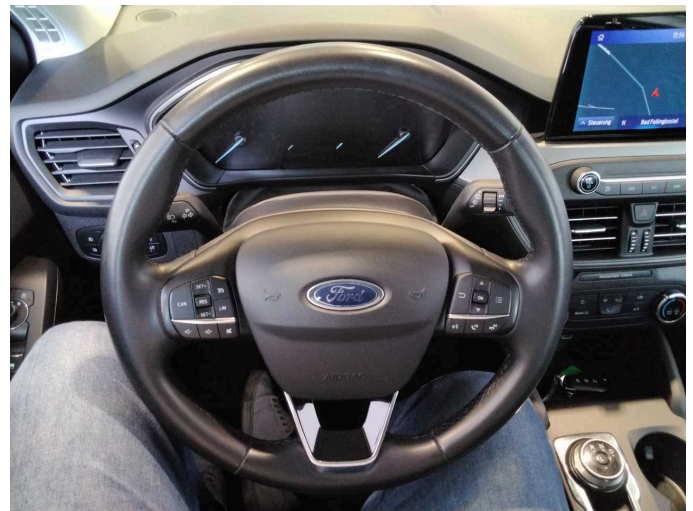


Figure 22: Misc.

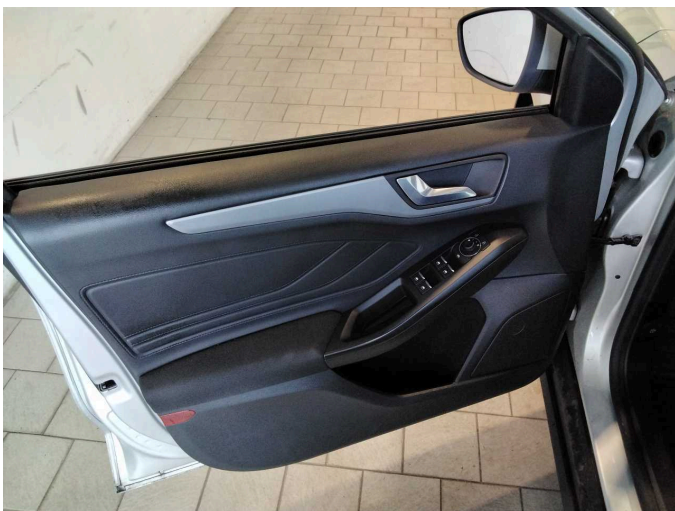


Figure 23: Misc.

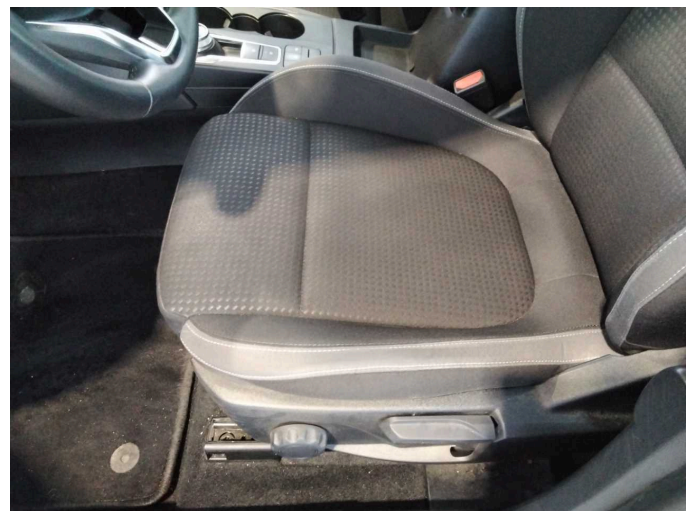


Figure 24: Misc.



Figure 25: Misc.



Figure 26: Misc.

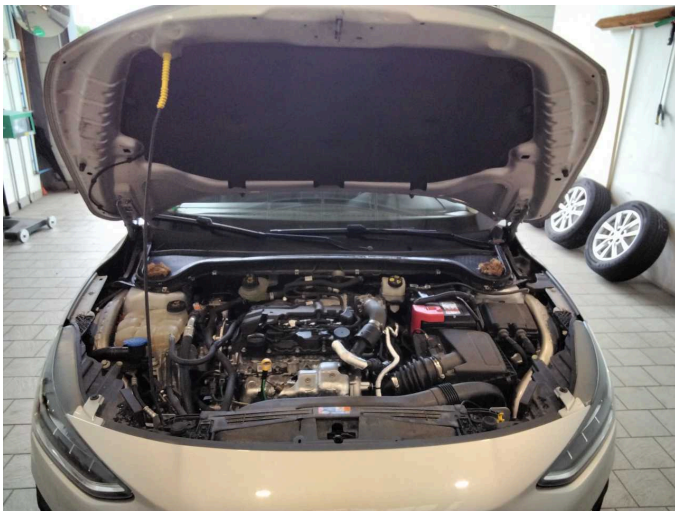


Figure 27: Misc.



Figure 28: Misc.



Figure 29: Misc.



Damage 1: Trim / covers: Floor mats - Broken / torn - Replace



**Damage 2:** Door - front left side: Door edge - Scratch(es) - Smart repair



**Damage 2:** Door - front left side: Door edge - Scratch(es) - Smart repair



**Damage 3:** Roof: Roof - dent(s) - Smooth repair work



**Damage 3:** Roof: Roof - dent(s) - Smooth repair work



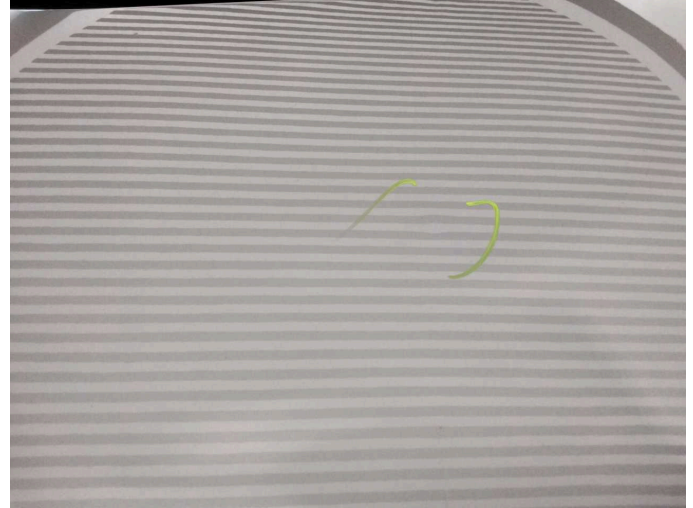
**Damage 4:** Door - rear right side: Door - Scratch(es) - Smart repair



**Damage 4:** Door - rear right side: Door - Scratch(es) - Smart repair



**Damage 5:** Bonnet: Bonnet - dent(s) - Smooth repair work



**Damage 5:** Bonnet: Bonnet - dent(s) - Smooth repair work



**Damage 5:** Bonnet: Bonnet - dent(s) - Smooth repair work



**Damage 6:** Sill - left side: Sill - Dent / paintcoat damage - Smart repair



**Damage 6:** Sill - left side: Sill - Dent / paintcoat damage - Smart repair



**Damage 6:** Sill - left side: Sill - Dent / paintcoat damage - Smart repair



**Damage 7:** Rear bumper: Rear bumper - Dent / paintcoat damage - Repair and paint



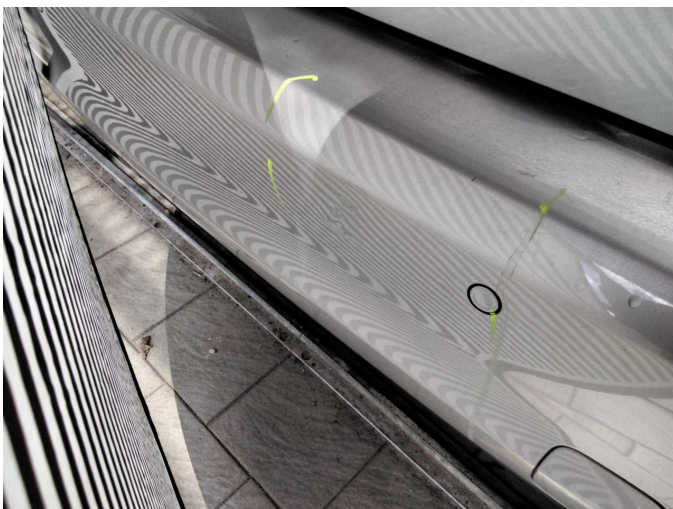
**Damage 7:** Rear bumper: Rear bumper - Dent / paintcoat damage - Repair and paint



**Damage 7:** Rear bumper: Rear bumper - Dent / paintcoat damage - Repair and paint



**Damage 7:** Rear bumper: Rear bumper - Dent / paintcoat damage - Repair and paint



**Damage 7:** Rear bumper: Rear bumper - Dent / paintcoat damage - Repair and paint



**Damage 7:** Rear bumper: Rear bumper - Dent / paintcoat damage - Repair and paint



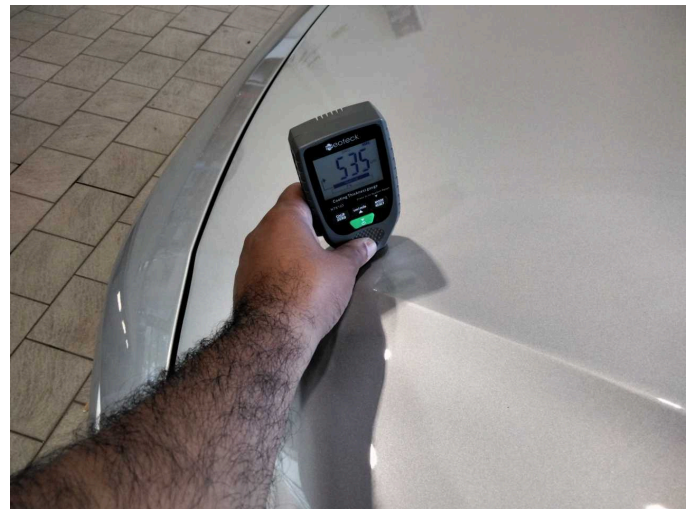
**Damage 7:** Rear bumper: Rear bumper - Dent / paintcoat damage - Repair and paint



**Wear and tear 1:** Vehicle glazing: Windscreen - Stone chips - No deduction



**Wear and tear 2:** Front bumper: Front bumper - Stone chips - No deduction



**Bonnet:** 535 µm



**Bonnet:** 535 µm



# Wartungshistorie

(gemäß Auftraggeber Informationen)

Fahrgestellnummer: WF0PXXGCHPNB02089  
Hersteller / Modell: FORD FORD Focus Turnier 1.5 EcoBlue Start-Stopp-System Aut.  
COOL&CONNECT

Datum	KM-Stand	Beschreibung
04.02.2026	95.378	HU + AU
25.08.2025	84.873	Motoröl b. Wartung; Ölfilter ern; Regelwartungsdienst; Systemtest/ Eigendiagnose; Wartung Sonstiges
19.07.2024	57.660	Bremse Sonstiges; Bremsklötze hinten; Bremsklötze vorne; Bremsscheiben + Klötze v; Bremsscheiben vorne; Kraftstofffilter ern; Luftfiltereinsatz ern; Motoröl b. Wartung; Ölfilter ern; Regelwartungsdienst; Wartung Sonstiges
10.11.2023	29.139	Motoröl b. Wartung; Ölfilter ern; Regelwartungsdienst; Wartung Sonstiges