

Expertise

Protocol number: 46293355
Order No. / Reference: 26512047
Inspection date: 30 Jun 2026

Manufacturer: Volkswagen

Model: ID. Buzz Pro

VIN: WV2ZZZEB4PH013665



Vehicle details

Manufacturer / Type / Model / Equipment

Volkswagen ID. Buzz Pro

Vehicle Identification number WV2ZZZEB4PH013665

Mileage (Read) 40,837 km

First registration 17 Feb 2023

Number of holders 1

Power / Engine displacement 70 kw / 0 ccm

Fuel type / Cylinder Electric / 0

Gearbox / Number of gears Direct drive / 1

Type of drive Rear drive

Type of vehicle Van

Colour / colour code Candy-Weiß/Limonengelb
Metallic

Doors / Seats 5 / 5

Upholstery type Cloth / leather
combination

Colour of upholstery Yellow-Beige



Vehicle details

Maintenance booklet / proof	digital proof / complete	Next maintenance in	302 Tag(e)
Last service on / at	05/2025 at 34,378 km		
Key is / should be	2 / 2	FZG documents	ZB#2 (B) was available (copy), ZB#1 (S) was not available.
		Letter No.	GS357042
Previous damage / Accident	Detectable	Repainting	Detectable
Inspection conditions	sufficient	Lifting equipment / pit	yes
Test drive	Not performed	Engine function test	Performed
Manufacturer key number/ type code number	0603 / CQY 00016		
Emission standard	2017/1151;WLTP;reine Elektrofz	fine dust sticker	
Permitted total weight	3,000 kg	Empty weight	

Tyres

Mounted tyres

#	Tyre size	Type of tyre	Manufacturer	Tread depth
1)	235/50 R20 104T	Winter tyres on Light alloy	Goodyear	6mm / 6mm
2)	265/45 R20 108T	Winter tyres on Light alloy	Goodyear	6mm / 6mm

Additional tyres

#	Tyre size	Type of tyre	Manufacturer	Tread depth
1)	235/45 R21 104T	Summer tyres on Light alloy	Hankook	5mm / 5mm
2)	265/40 R21 108T	Summer tyres on Light alloy	Hankook	5mm / 5mm

Replacement

Typ	Tyre size	Type of tyre	Manufacturer	Tread depth
	Tirefit	Expiration date 11/2026		

Legend: Tread depth information for the left tire is listed first, for the right tire it is listed second on the axle in the direction of travel.



Equipment

Standard equipment

- ABS
- Airbag: Head airbags for the outer rear seats
- Armrests for front seats (inside)
- Evasive steering assist and turn assist
- Exterior mirrors, driver's side convex, passenger's side convex
- Battery (58 Ah/340 A)
- Operating voltage 12 V
- third brake light
- DC/DC converter 3.0 KW
- Three-point automatic seat belts, rear outer seats, with ECE label
- e-Sound
- Single-tone signal horn
- Window: Glass tinted dark in the background
- Window: Fixed side window in the passenger compartment, front left
- Electric windows, front
- luggage compartment cover
- Cruise control system with speed limiter
- Tailgate with window cutout
- Heated rear window
- Interior lighting in the front and rear footwells
- Air conditioning system "Air Care Climatronic" with active combination filter
- LED luggage compartment lighting
- LED headlights
- Headlight range control
- Fatigue detection
- Emergency braking assistant "Front Assist"
- Upholstery: Cloth
- Radio: App-Connect incl. App-Connect Wireless
- Radio: Digital radio reception (DAB+)
- Radio: "Ready 2 Discover" radio with 25.4 cm (10-inch) color touchscreen
- Wheels, tires: Covers for alloy wheels
- Wheels/Tires: Wheel bolts with enhanced theft protection
- Windscreen wiper intermittent control
- Sliding door, left side in the passenger/cargo area
- Keys for locking system: 2 vehicle keys
- Seatbelt check
- Seats: Height adjustment for both front seats, manual
- Lane keeping assistant "Lane Assist"
- LED daytime running lights
- Telephone: Mobile phone interface with inductive charging function
- Traffic sign recognition
- Electronic immobilizer
- Central locking with keyless start system "Keyless Start" without safe locking
- Airbag for driver and front passenger
- Airbag: Side and head airbags for driver and front passenger
- Electrically adjustable, folding and heated exterior mirrors, with passenger-side mirror lowering function.
- Exterior mirror housings in high-gloss black and door handles in body color
- Vehicle tool kit
- CCS charging socket
- Design badges D-pillar
- Three-point automatic seat belts at the front with belt and end fitting tensioners and height adjustment
- Parking assistance in the front and rear areas
- Electronic Stability Program
- Window: Rear window
- Window: Fixed side window in the passenger compartment, front right
- Windscreen in heat-insulating glass
- Total weight: Permissible total weight 3,000 kg
- Transmission: Direct drive, 1-speed
- Tailgate closing without interior unlocking function
- Rear window wiper/washer system with intermittent function
- Headrests (5)
- Mode 3 Type 2 charging cable, 16 A
- LED taillights
- Steering wheel: Multifunction steering wheel
- Multifunctional camera
- Non-smoking version
- eCall emergency call system
- Proactive occupant protection system (PreCrash Basic and Front)
- Radio: Diversity antenna for FM reception
- Radio accessories: 2 USB-C ports in the instrument panel and 1 USB-C charging port in the front.
- Wheels/Tires: Tire pressure monitoring system
- Rear seat bench and backrest can be folded down in a split configuration
- Sliding door, on the right in the passenger/cargo area
- Speed-sensitive power steering (Servotronic)
- dimmable interior safety mirror
- Sun visors with mirrors, illuminated
- Bumpers in body color
- Phone: Car2X
- Ambient lighting with logo projection
- First aid kit, warning triangle and high-visibility vest
- Prepared for later activation: "Discover Pro" navigation function



Extra equipment

- On-board tools, jack and tire mobility set: 12-volt compressor and tire sealant
- Paint finish: Metallic/Roof in solid color (two-tone)
- Package: Assistance Package "Plus" (Memory for "Park Assist Plus" - Surround view "Area View" incl. reversing camera "Rear View" - Multifunction steering wheel in synthetic leather, with touch controls, heated - Central locking with keyless locking and starting system "Keyless Advanced" with safe locking - Driver assistance system "Travel Assist" including lane keeping assist "Lane Assist" and "Emergency Assist" - Anti-theft alarm with interior monitoring, backup horn - Lane change assist "Side Assist" - Parking assist "Park Assist Plus" - Adaptive cruise control, Stop&Go, speed limiter)
- Package: Design package (illuminated strip between the headlights - stainless steel pedals in "Play/Pause" design - Dynamic Light Assist high beam control for LED matrix headlights - IQ.LIGHT - LED matrix headlights with automatic headlight control, bad weather light, welcome function - dynamic headlight range control with dynamic cornering lights - LED taillights with dynamic turn signals)
- Package: Open & Close Package with "Keyless Advanced" and safe locking (illuminated door handle recesses - central locking with keyless locking and starting system "Keyless Advanced" with safe locking - electric tailgate (opening and closing) with "Easy Open" and "Easy Close" function - anti-theft alarm system with interior monitoring, backup horn and tow-away protection - rear approach lighting)
- Interior style with steering wheel in Electric White (seat center panels of the front seats and outer rear seats in "SEAQUAL®" fabric - 30-color ambient lighting - surround of the infotainment display and central controls in Electric White - multifunction steering wheel in synthetic leather, with touch controls, heated - door trim in plastic with insert, armrest in synthetic leather - armrests for front seats on both sides)
- Package: Comfort Package "Plus" in V with Assistance Package "Plus" (ID. Buzz Box, removable center console with storage compartments between the front seats - 2 USB-C ports in the instrument panel, USB-C charging ports front and rear - multifunction steering wheel in synthetic leather, with touch controls, heated - heated seats for both seats in the driver's cab, separately adjustable - heated windshield in heat-insulating glass - automatically dimming interior mirror - Multiflexboard, two folding boxes - cargo net partition - intermittent windshield wipers with rain sensor - heated windshield washer nozzles, front)
- Package: Infotainment Package Plus (Voice control - Navigation system "Discover Pro" - Radio "Ready 2 Discover" with 30, 48 cm (12-inch) touch color display - 9 speakers (5 front speakers and 4 rear speakers) - Mobile phone interface "Comfort" with inductive charging function)
- Wheels/Tires: 20" alloy winter wheels (additional) (alloy winter wheels (additional), Airstop winter tires 235/50 R20 104T XL front, 265/45 R20 108T XL rear)
- Wheels/Tires: 21" "Bromberg" alloy wheels (4 "Bromberg" alloy wheels 8.5 J x 21 front, 10 J x 21 rear, in black, polished finish - wheel covers - Airstop® tires HL 235/45 R 21 104 T XL front, Airstop® tires HL 265/40 R 21 108 T XL rear)

Brief expert findings

Documents submitted	At the time of the inspection, the vehicle registration certificate Part 2 (title) was available, but the vehicle registration certificate Part 1 (document) was not. (Copy)
VIN comparison	The vehicle identification number (VIN) was read from the vehicle and its conformity with the submitted documents was confirmed by the undersigned during the inspection.
Inspection	The inspection conditions were sufficient for the assessment of the vehicle. Lifting equipment and/or a pit were available for examining the vehicle.
Test drive	No test drive/shunting maneuver was carried out during the inspection of the vehicle.
Engine function test	An engine test run was performed.



Value reducing factors

No.	Component group	Description
1	Door - front left side	Door - dent(s) - Smooth repair work
2	Wing mirror - right side	Cap - Broken / torn - Replace
3	Steering system	Steering wheel - Abrasion - Smart repair
4	Rear bumper	Rear bumper - Scratch(es) - Smart repair
5	Sill - right side	Trim - Scratched - Replace
6	Wheel / tyres	Alloy rim - rear left side - Scratch(es) - Loss in value
7	Door - front right side	Door - Deformed - Paint
8	Wheel / tyres	Alloy rim - rear right side (Materialabtrag) - Scratched - Replace
9	2nd wheel set	1 alloy rim (HR, Materialabtrag) - Scratched - Replace
10	2nd wheel set	1 alloy rim (HL, Materialabtrag) - Scratched - Replace
11	Vehicle glazing	Windscreen (Rissbildung) - Stone chips - Replace

Wear and tear

No.	Component group	Description
1	Misc.	Main inspection - No evidence - No deduction
2	Front bumper	Front bumper - Stone chips - No deduction
3	Roof	Roof - dent(s) - No deduction

The vehicle shows signs of wear and tear commensurate with its age and use.

Previous damages

No.	Previous damage	Extent of damage (Net)
1	Side right, Professionally repaired, Invoice of repair done Non-existent, from 2 Dec 2023	3.272,23 €

Repainting

No.	Repainting
1	Side panel - rear right side, Professionally carried out, Invoice of repair done Non-existent
2	Door - rear right side, Professionally carried out, Invoice of repair done Non-existent

Paint coat thickness measurement

Side panel - rear right side	333 µm	Door - rear right side	222 µm
------------------------------	--------	------------------------	--------

Order/Scope of Order

An order was placed to prepare a sales report for the described vehicle. This report includes the following:

- Description of key vehicle information
- Documentation of equipment features
(*Delivery by third-party service providers*)
- Documentation of damage, defects, missing parts
- Documentation of prior damage, unrepaired prior damage, repainting
- A brief visual or functional inspection of the equipment details, if possible.
(*Functional testing of driver assistance systems is not included in the scope of services!*)
- a photographic documentation of the vehicle



Basis for the order

This product is based on the guidelines for vehicle returns and valuations published by Alphabet Fleet GmbH. The expert makes the specific findings in each individual case objectively, within the framework of the prescribed standards, based on their own expertise.

The vehicle inspection takes place in a fully assembled, unassembled state.

Damage or defects that can only be detected during disassembly/diagnostic work or through further investigation remain within the realm of prognostic risk. An increased risk exists due to concealed defects caused by fraudulent misrepresentation and which were not identifiable by the expert.

Damage or defects resulting from normal use or wear and tear of the vehicle will be accepted in accordance with the applicable standard.

There was no explicit identification or monetary consideration of the expected features within the product.

Features which, in their nature and extent, slightly exceed normal use but do not constitute unacceptable damage, will be documented and indicated as signs of wear, if applicable.

Damage or defects that, according to the applicable standard, can no longer be attributed to normal use or wear and tear are listed under "Value Reducing Factors" in the product description.

Depending on the product specification, a monetary ID can be provided. If this takes place, the costs can be 100% d or pro rata depending on the vehicle's age and mileage.

Previous damages

Professionally repaired previous damages were found at the vehicle.



Figure 1: Diagonal front (left)



Figure 2: Diagonal front (right)



Figure 3: Diagonal rear (left)



Figure 4: Diagonal rear (right)



Figure 5: Interior - front



Figure 6: Interior - rear



Figure 7: Instrument cluster



Figure 8: Instrument panel

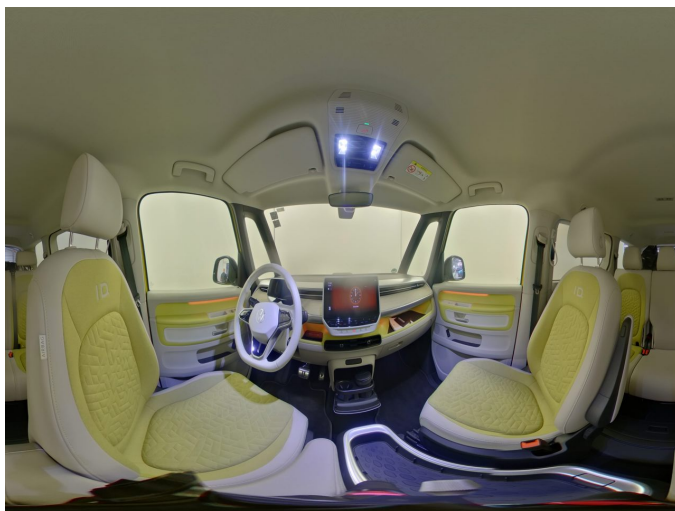


Figure 9: Interior 360° view



Figure 10: Cargo area



Figure 11: VIN



Figure 12: Mounted tyres



Figure 13: Documents



Figure 14: Additional tyres

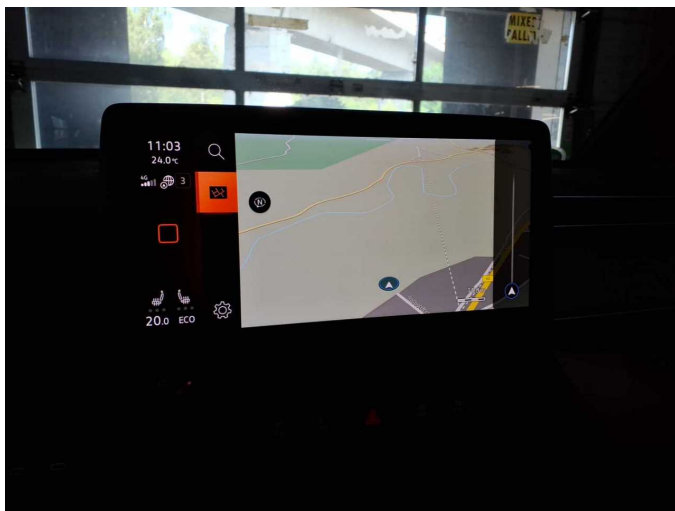


Figure 15: Navigation



Figure 16: Misc.



Figure 17: Misc.

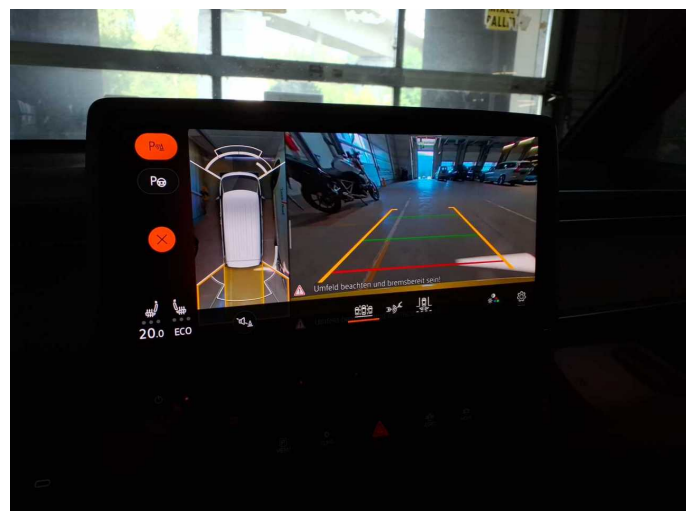


Figure 18: Misc.



Figure 19: Misc.



Figure 20: Misc.



Figure 21: Misc.

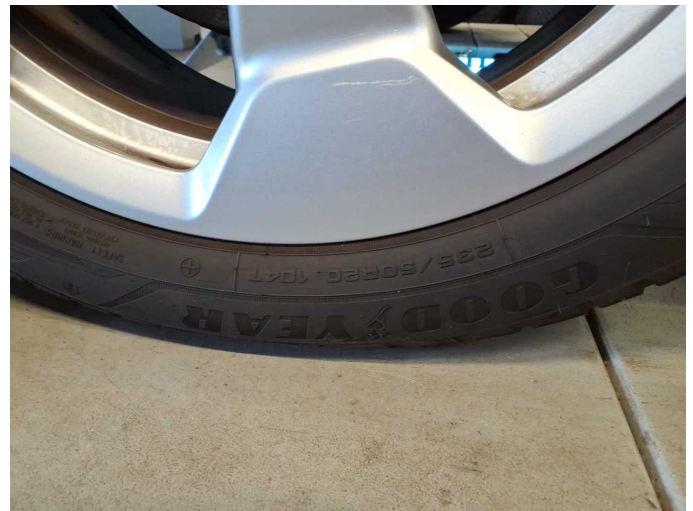


Figure 22: Misc.



Figure 23: Misc.



Figure 24: Misc.



Figure 25: Misc.



Figure 26: Misc.



Figure 27: Misc.



Figure 28: Misc.

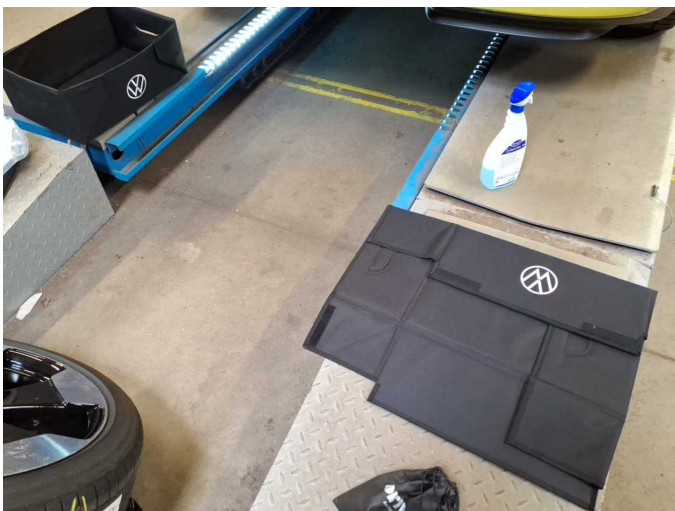


Figure 29: Misc.

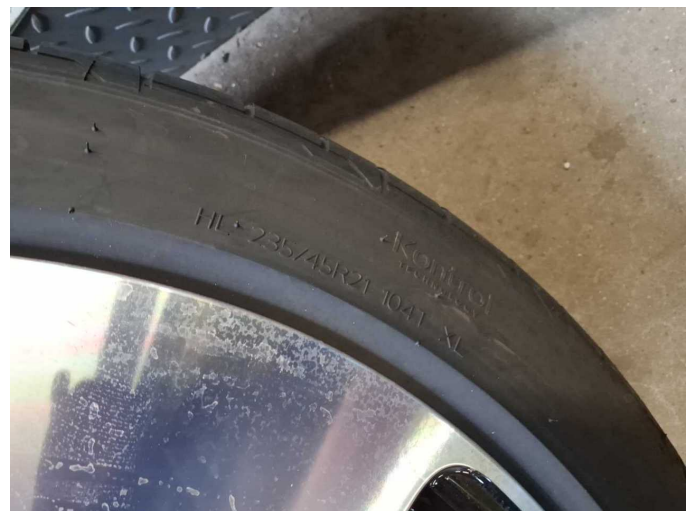


Figure 30: Misc.



Figure 31: Misc.

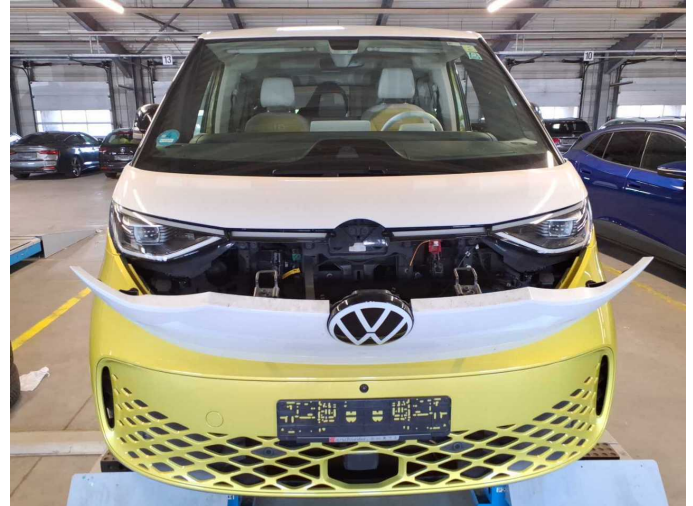


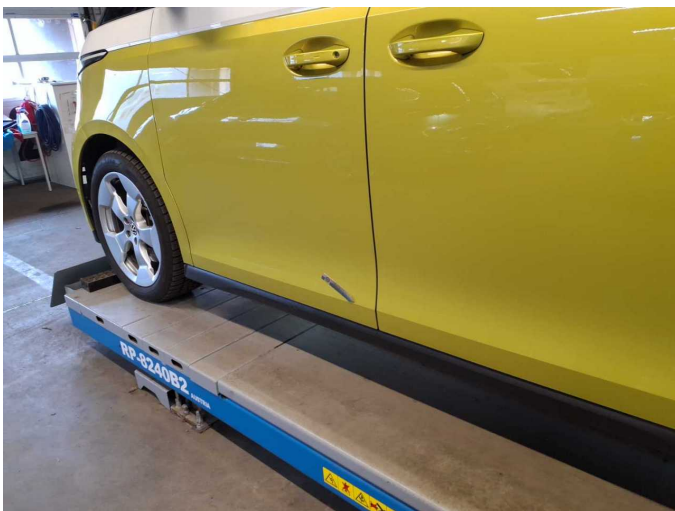
Figure 32: Misc.



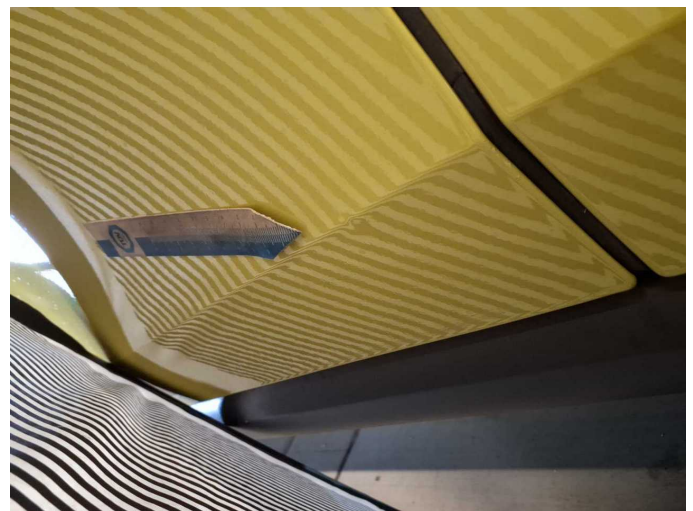
Figure 33: Misc.



Figure 34: Misc.



Damage 1: Door - front left side: Door - dent(s) - Smooth repair work



Damage 1: Door - front left side: Door - dent(s) - Smooth repair work



Damage 2: Wing mirror - right side: Cap - Broken / torn - Replace



Damage 2: Wing mirror - right side: Cap - Broken / torn - Replace



Damage 2: Wing mirror - right side: Cap - Broken / torn - Replace



Damage 3: Steering system: Steering wheel - Abrasion - Smart repair



Damage 3: Steering system: Steering wheel - Abrasion - Smart repair



Damage 3: Steering system: Steering wheel - Abrasion - Smart repair



Damage 4: Rear bumper: Rear bumper - Scratch(es) - Smart repair



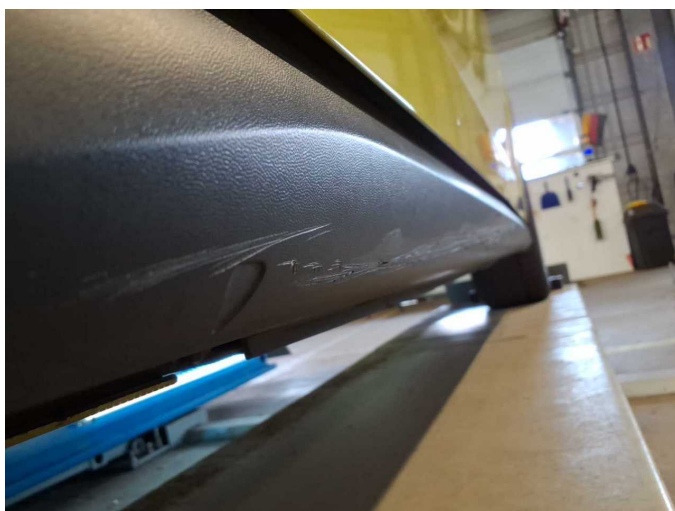
Damage 4: Rear bumper: Rear bumper - Scratch(es) - Smart repair



Damage 5: Sill - right side: Trim - Scratched - Replace



Damage 5: Sill - right side: Trim - Scratched - Replace



Damage 5: Sill - right side: Trim - Scratched - Replace



Damage 5: Sill - right side: Trim - Scratched - Replace



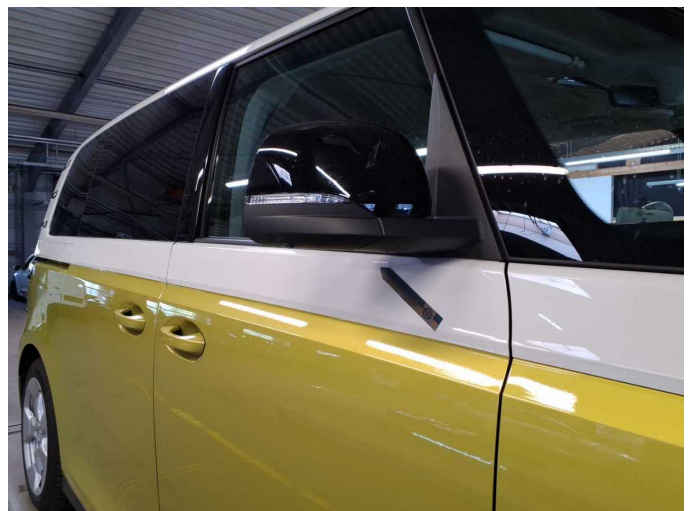
Damage 6: Wheel / tyres: Alloy rim - rear left side - Scratch(es) - Loss in value



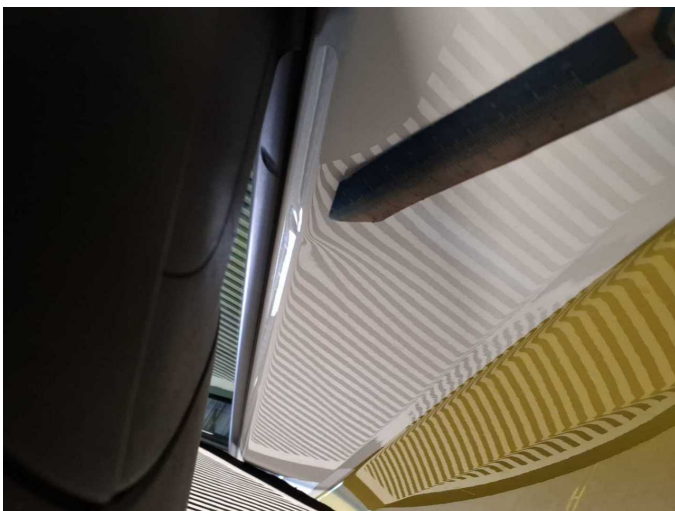
Damage 6: Wheel / tyres: Alloy rim - rear left side - Scratch(es) - Loss in value



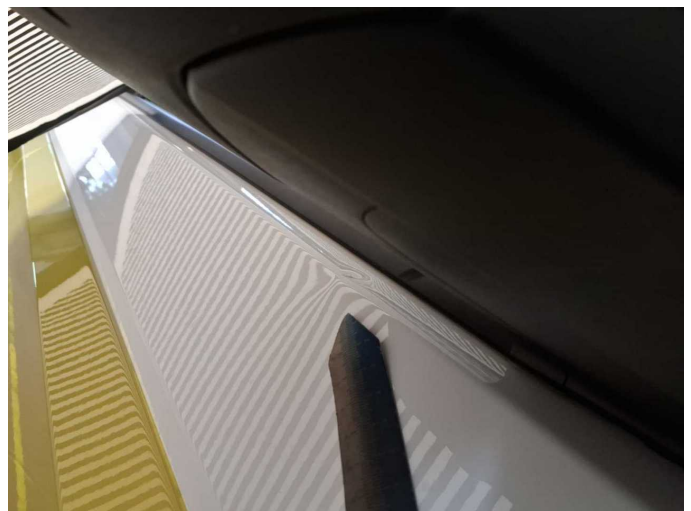
Damage 6: Wheel / tyres: Alloy rim - rear left side - Scratch(es) - Loss in value



Damage 7: Door - front right side: Door - Deformed - Paint



Damage 7: Door - front right side: Door - Deformed - Paint



Damage 7: Door - front right side: Door - Deformed - Paint



Damage 7: Door - front right side: Door - Deformed - Paint



Damage 7: Door - front right side: Door - Deformed - Paint



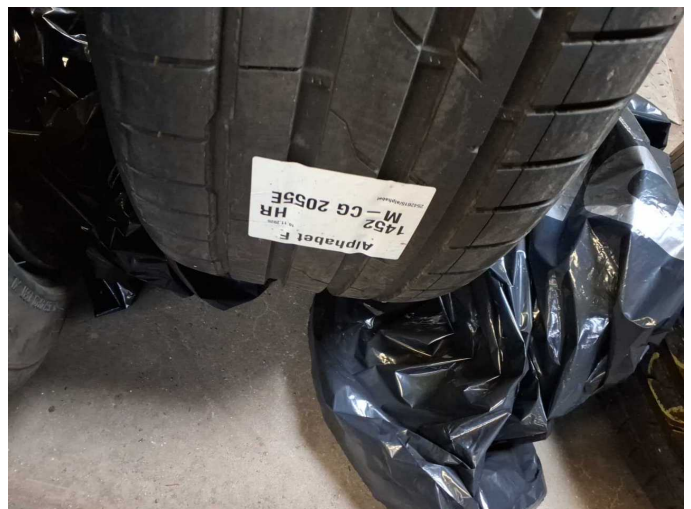
Damage 8: Wheel / tyres: Alloy rim - rear right side (Materialabtrag) - Scratched - Replace



Damage 8: Wheel / tyres: Alloy rim - rear right side (Materialabtrag) - Scratched - Replace



Damage 8: Wheel / tyres: Alloy rim - rear right side (Materialabtrag) - Scratched - Replace



Damage 9: 2nd wheel set: 1 alloy rim (HR, Materialabtrag) - Scratched - Replace



Damage 9: 2nd wheel set: 1 alloy rim (HR, Materialabtrag) - Scratched - Replace



Damage 9: 2nd wheel set: 1 alloy rim (HR, Materialabtrag) - Scratched - Replace



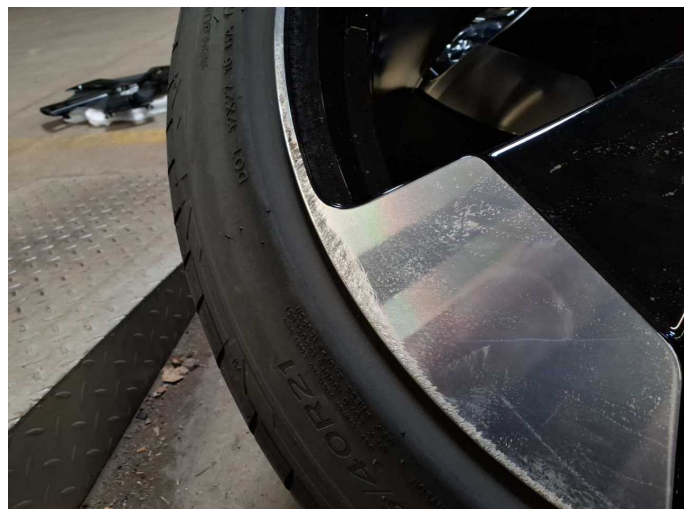
Damage 9: 2nd wheel set: 1 alloy rim (HR, Materialabtrag) - Scratched - Replace



Damage 9: 2nd wheel set: 1 alloy rim (HR, Materialabtrag) - Scratched - Replace



Damage 10: 2nd wheel set: 1 alloy rim (HL, Materialabtrag) - Scratched - Replace



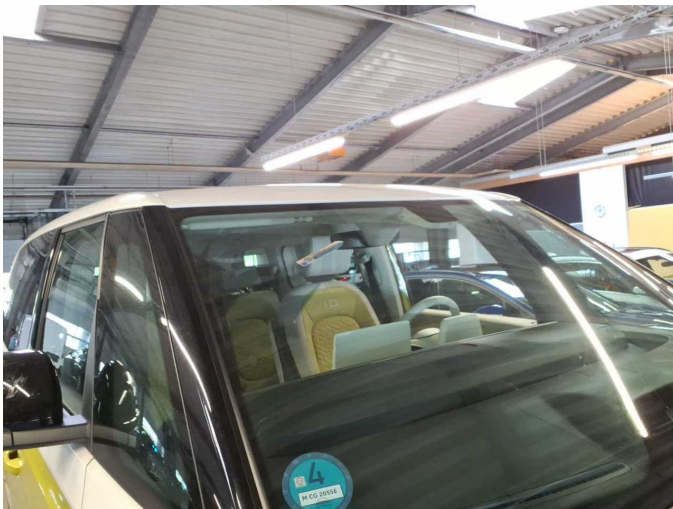
Damage 10: 2nd wheel set: 1 alloy rim (HL, Materialabtrag) - Scratched - Replace



Damage 10: 2nd wheel set: 1 alloy rim (HL, Materialabtrag) - Scratched - Replace



Damage 10: 2nd wheel set: 1 alloy rim (HL, Materialabtrag) - Scratched - Replace



Damage 11: Vehicle glazing: Windscreen (Rissbildung) - Stone chips - Replace



Damage 11: Vehicle glazing: Windscreen (Rissbildung) - Stone chips - Replace



Damage 11: Vehicle glazing: Windscreen (Rissbildung) - Stone chips - Replace



Wear and tear 3: Roof: Roof - dent(s) - No deduction



Wear and tear 3: Roof: Roof - dent(s) - No deduction



Repainting 1: Side panel - rear right side



Repainting 2: Door - rear right side



Wartungshistorie

(gemäß Auftraggeber Informationen)

Fahrgestellnummer: WV2ZZZEB4PH013665

Hersteller / Modell: VOLKSWAGEN VOLKSWAGEN ID. Buzz Pro

Datum	KM-Stand	Beschreibung
12.05.2025	34.378	Bremsflüssigkeit; Bremsflüssigkeit ern; Regelwartungsdienst