

Expertise

Protocol number: 46230240
Order No. / Reference: 26153758
Inspection date: 15 Jun 2026

Manufacturer: Mercedes-Benz

Model: 319 CDI Sprinter 4x4 Standard 9G-TRONIC PRO

VIN: W1V3MBTZ4TP849883



Vehicle details

Manufacturer / Type / Model / Equipment

Mercedes-Benz 319 CDI Sprinter 4x4 Standard 9G-TRONIC PRO

Vehicle Identification number W1V3MBTZ4TP849883

Mileage (Read) 11,862 km

First registration 31 Jul 2025

Number of holders 1

Next periodical technical inspection 07/2026

(Report not on hand)

Power / Engine displacement 140 kw / 1,950 ccm

Fuel type / Cylinder Diesel / 4

Gearbox / Number of gears Automatic / 9

Type of drive All-wheel drive

Type of vehicle Van

Colour / colour code Hightechsilber Metallic

Doors / Seats 4 / 3

Upholstery type Cloth

Colour of upholstery Black

Re-import no

Type of use rental car

readiness to drive Roadworthy



Vehicle details

Maintenance booklet / proof	digital proof / complete	Next maintenance in	394 Tag(e)
Key is / should be	2 / 2	FZG documents	ZB#2 (B) was available (copy), ZB#1 (S) was not available.
		Letter No.	HN436602
Previous damage / Accident	None detectable	Repainting	None detectable
Inspection conditions	sufficient	Lifting equipment / pit	yes
Test drive	Not performed	Engine function test	Performed
readiness to drive	Roadworthy		
Manufacturer key number/ type code number	2222 / BFK 01915		
Emission standard	EUROVI; E; M, N	fine dust sticker	
Permitted total weight	3,500 kg	Empty weight	
Dimensions	5932 x 2020 x 2785		

Tyres

Mounted tyres

#	Tyre size	Type of tyre	Manufacturer	Tread depth
1)	225/75 R16 120R	Winter tyres on Steel rim with wheel cover	Continental	9mm / 9mm
2)	225/75 R16 120R	Winter tyres on Steel rim with wheel cover	Continental	8mm / 8mm

Legend: Tread depth information for the left tire is listed first, for the right tire it is listed second on the axle in the direction of travel.

TÜV SÜD Auto Partner GmbH
Wiesenring 2
04159 Leipzig

Inspection location
ARS Altmann AG Automobillogistik
Lilienthalstraße 2
29693 Hodenhagen



Equipment



Standard equipment

- Battery: fleece battery 12 V / 92 Ah
- Reference mass of at least 2381 kg is necessary
- Brake assist, active
- Brake lights, adaptive
- Roof: High roof
- Diesel particulate filter and SCR
- Digital operating instructions
- Entry handle on rear right corner pillar
- Driving light assistant
- Electric window regulator for driver and passenger door
- Noise measures
- Seatbelt warning device for front passenger seat
- Grab handle for entry to the cargo area sliding door on the partition wall
- Rear lights with partial LED technology
- Intelligent speed assistant
- Tempmatic controlled air conditioning
- Headrests (2), front
- Cable duct at rear portal
- Steering wheel adjustable for tilt and height
- Headlight range control
- Marker lights, side
- Navigation: Navigation pre-installation
- Package: Acoustics
- Upholstery: Cloth
- Radio: Digital Radio DAB
- Radio: MBUX multimedia system
- Radio accessories: Communication module (LTE) for digital services
- Rain sensor
- Tires: Tires without specified make
- Tires: Summer tires
- Wheels: Tires 225/75 R16 C
- Wheels: Premium complete wheel protection - 3 years
- Rear view camera
- Sliding door on the right, cargo/passenger compartment
- Power steering
- Seats: Driver's seat
- Jump start contact: The jump start contact facilitates jump-starting the vehicle and externally charging the starter battery. The contact is located in the engine compartment near the air filter housing.
- continuous partition wall
- Lashing rings according to DIN 7510-3 in the floor and in the B-pillars
- Immobiliser
- Parking light removed
- Central locking with radio remote control
- Storage compartment above windshield
- Rear towing eye
- Hill start assist
- Front side indicator lights
- third brake light
- COC documents
- Ceiling light in the cargo/passenger compartment - with door contact
- Tachometer
- Electrical components for trailer socket
- HVO-capable vehicle
- Generator 14 V / 250 A
- Transmission: 9G-TRONIC
- Seatbelt warning device for driver's seat
- Grab handle for entry of driver and passenger
- Main tank 93 liters
- HOLD function
- Clothes hooks in the driver's cab
- Instrument cluster with color display
- Paint finish: Solid color paint
- Cable duct on side wall
- Steering wheel: Multifunction steering wheel
- Longitudinal beam reinforcement
- Mercedes-Benz emergency call system
- Without weight increase/decrease: 3,500 kg
- Breakdown Management – By pressing the breakdown button or via the contact entry in your address book, the disabled vehicle automatically establishes a voice connection with the Customer Assistance Center (CAC). It transmits the current location and all relevant vehicle information. The CAC staff immediately inform the nearest Mercedes-Benz Service24h, which dispatches a repair service.
- Tire pressure monitoring - on front and rear axles (wireless)
- Wheels: Steel rims 6.5 J x 16
- Reversing light under bumper corner
- Crosswind Assist
- Seats: Passenger seat, two-seater
- Start-stop function
- USB 5V socket
- Speedometer km/h
- Cruise control
- Blind Spot Assist
- First aid kit
- Pre-installation for Remote Services Plus
- Warning triangle
- Elimination of ECO start/stop function
- Heat-insulating glass with band filter on the windshield
- Registration certificate, Part II
- Storage compartment under cockpit
- Axle ratio $i = 3.923$
- Passenger side airbag
- Driver's side airbag
- Active Lane Keeping Assist



- ADAPTIVE ESP (latest generation) with load- and speed-dependent driving dynamics control - Anti-lock braking system (ABS) - Traction control (ASR) - Electronic brake-force distribution (EBD) - Hydraulic brake assist (BAS) - Load Adaptive Control (LAC) - Roll Over Mitigation (ROM) - Roll Movement Intervention (RMI) - Enhanced Understeering Control (EUC) - Brake Disc Wiping/Drying (BDW) - Electronic Brake Prefill (EBP) - Easy Lane Change (ELC)
- Electrically folding exterior mirrors
- Outdoor temperature display

Extra equipment

- Battery: fleece battery 12 V / 70 Ah
- Interior lining of cargo area up to roof height, washable
- Load securing: Lashing rails on the side wall to the side railing.
- Package: Parking package with 360° camera Parking Assistant Rear Cross Traffic Alert Drive Away Assist
- Crossbeam with step
- Tires: M+S tires
- Tires: Tire brand, special request
- Seats: Driver's seat box, low
- Phone: Smartphone integration package
- Storage for smartphones including wireless charging
- 13-pin trailer socket

- 4x4 all-wheel drive with torque-on-demand
- ATTENTION ASSIST: ATTENTION ASSIST can support the driver on long, monotonous journeys by monitoring their attention. If it detects signs of fatigue or increasing inattentiveness, it suggests a break.
- Electrically adjustable and heated exterior mirrors, left and right

- Wooden floor (cargo area)
- Hinged lid for storage compartment
- LED High Performance Headlights
- LED light strip in the cargo area
- Package: Winter Package - Wet Wiper System - Heated passenger seat - Heated driver seat
- Wheel arch loadable
- Tires: Continental brand
- Seats: Driver's seat armrest
- Seats: Suspension seat comfort version, driver's seat
- Long-throw nozzles in I-panel
- Towbar - for increased towing capacity 2.8 t / 3.0 t
- Exterior mirrors without turn signals

Brief expert findings

Documents submitted	At the time of the inspection, the vehicle registration certificate Part 2 (title) was available, but the vehicle registration certificate Part 1 (document) was not. (Copy)
VIN comparison	The vehicle identification number (VIN) was read from the vehicle and its conformity with the submitted documents was confirmed by the undersigned during the inspection.
Inspection	The inspection conditions were sufficient for the assessment of the vehicle. Lifting equipment and/or a pit were available for examining the vehicle.
Test drive	No test drive/shunting maneuver was carried out during the inspection of the vehicle.
Engine function test	An engine test run was performed.
readiness to drive	The vehicle was roadworthy at the time of inspection.

Value reducing factors

No.	Component group	Description
1	Bonnet	Support - Damaged - Replace
2	Bonnet	Bonnet - Scratch(es) - Smart repair
3	Rear bumper	Rear bumper - Scratch(es) - Loss in value
4	Door - front left side	Door - Scratch(es) - Smart repair
5	Bonnet	Bonnet - Malposition - Un- / install
6	Trim / covers	Boot lining (Tür links unten) - Holes - Replace
7	Sliding door, right	Trim (Unten) - Holes - Replace
8	Boot lid / rear door	Rear door - left side - Scratch(es) - Paint
9	Boot lid / rear door	Rear door - right side - Scratch(es) - Paint
10	Sliding door, right	Sliding door - Dent / paintcoat damage - Paint



Wear and tear

No.	Component group	Description
1	Vehicle glazing	Windscreen - Stone chips - No deduction

The vehicle shows signs of wear and tear commensurate with its age and use.

Paint coat thickness measurement

Roof	109 µm	Roof rail - left side	100 µm
Roof rail - right side	102 µm	Boot lid / rear door	95 µm
Mudguard - left side	96 µm	Mudguard - right side	95 µm
Bonnet	98 µm	Side panel - rear left side	94 µm
Side panel - rear right side	88 µm	Door - rear left side	91 µm
Door - rear right side	92 µm	Door - front left side	93 µm
Door - front right side	89 µm		

Order/Scope of Order

An order was placed to prepare a sales report for the described vehicle. This report includes the following:

- Description of key vehicle information
- Documentation of equipment features
(Delivery by third-party service providers)
- Documentation of damage, defects, missing parts
- Documentation of prior damage, unrepaired prior damage, repainting
- A brief visual or functional inspection of the equipment details, if possible.
(Functional testing of driver assistance systems is not included in the scope of services!)
- a photographic documentation of the vehicle

Basis for the order

This product is based on the guidelines for vehicle returns and valuations of light commercial vehicles published by Alphabet Fleet Management GmbH. The expert makes the specific findings in each individual case objectively, within the framework of the prescribed standards, based on their own expertise.

The vehicle inspection takes place in a fully assembled, unassembled state.

Damage or defects that can only be detected during disassembly/diagnostic work or through further investigation remain within the realm of prognostic risk. An increased risk exists due to concealed defects caused by fraudulent misrepresentation and which were not identifiable by the expert.

Damage or defects resulting from normal use or wear and tear of the vehicle will be accepted in accordance with the applicable standard.

There was no explicit identification or monetary consideration of the expected features within the product.

Features which, in their nature and extent, slightly exceed normal use but do not constitute unacceptable damage, will be documented and indicated as signs of wear, if applicable.

Damage or defects that, according to the applicable standard, can no longer be attributed to normal use or wear and tear are listed under "Value Reducing Factors" in the product description.

Depending on the product specification, a monetary ID can be provided. If this takes place, the costs can be 100% d or pro rata depending on the vehicle's age and mileage.

Previous damages

No apparent prior damage that had been repaired could be found on the vehicle.



Comments

- Ex STAR CAR Mietfahrzeug.



Figure 1: Diagonal front (left)



Figure 2: Diagonal front (right)



Figure 3: Diagonal rear (left)



Figure 4: Diagonal rear (right)

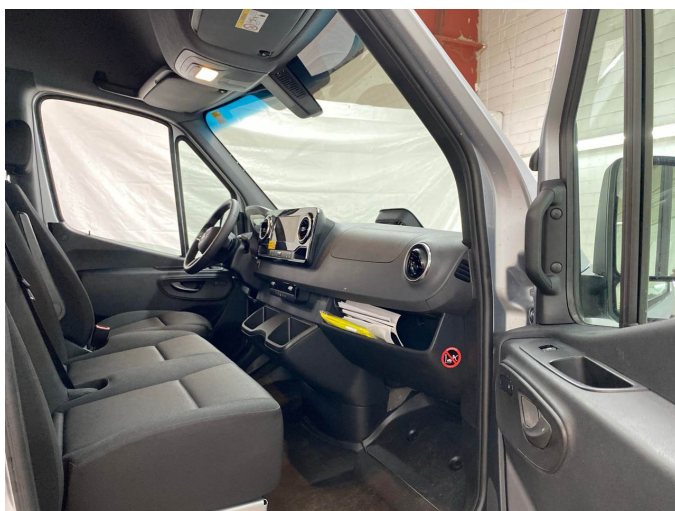


Figure 5: Interior - front



Figure 6: Interior - rear



Figure 7: Instrument cluster



Figure 8: Instrument panel



Figure 9: Interior 360° view

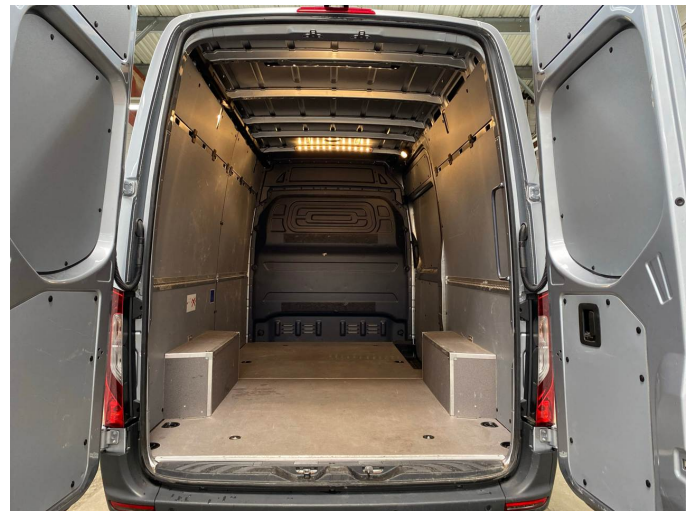


Figure 10: Cargo area



Figure 11: VIN



Figure 12: Mounted tyres



Figure 13: Documents



Figure 14: Misc.



Figure 15: Misc.



Figure 16: Misc.

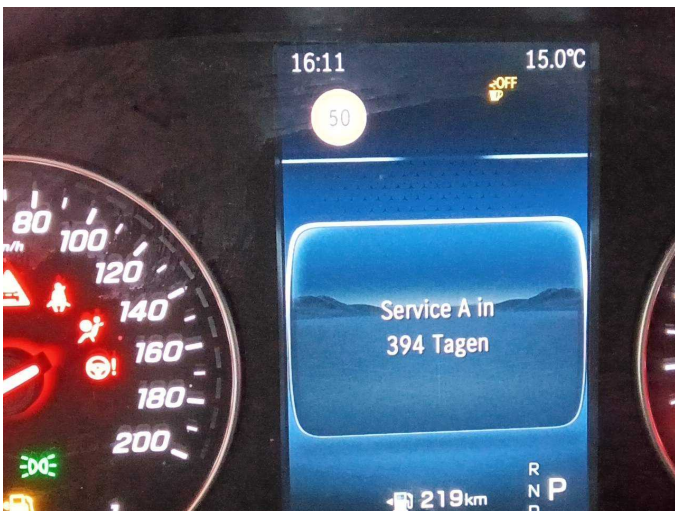


Figure 17: Misc.



Figure 18: Misc.



Figure 19: Misc.



Figure 20: Misc.



Figure 21: Misc.



Figure 22: Misc.



Figure 23: Misc.



Figure 24: Misc.



Figure 25: Misc.



Figure 26: Misc.



Figure 27: Misc.



Figure 28: Misc.

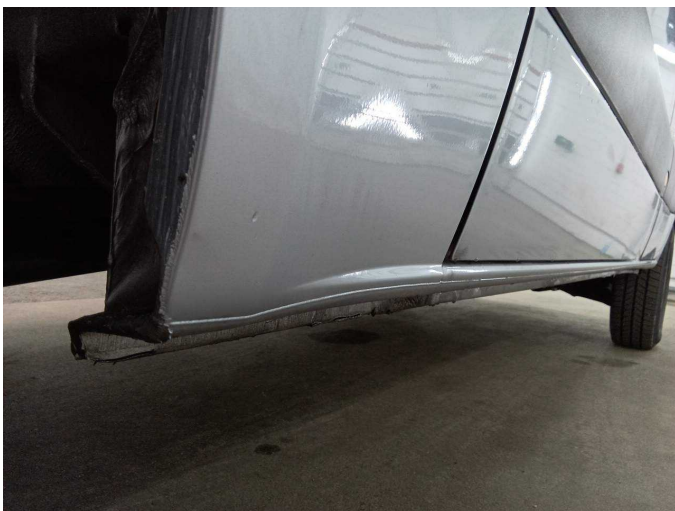


Figure 29: Misc.



Figure 30: Misc.



Figure 31: Misc.



Figure 32: Misc.

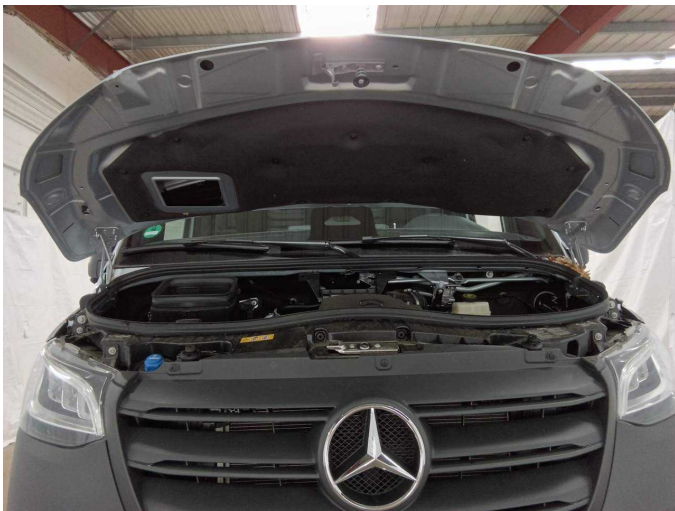


Figure 33: Misc.

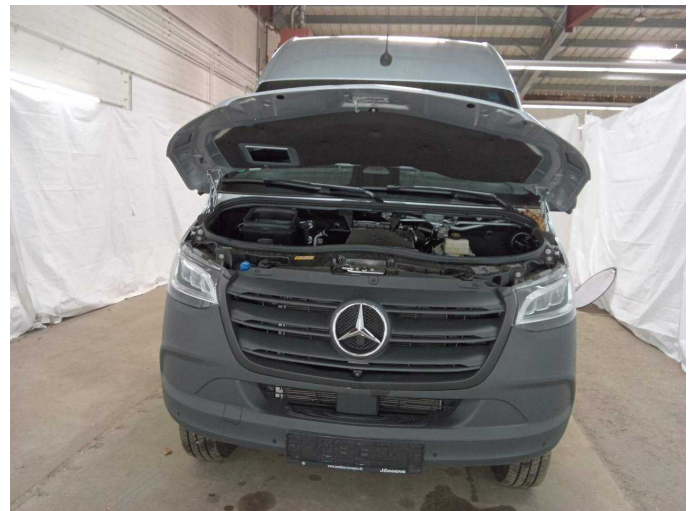


Figure 34: Misc.



Figure 35: Misc.



Damage 1: Bonnet: Support - Damaged - Replace



Damage 1: Bonnet: Support - Damaged - Replace



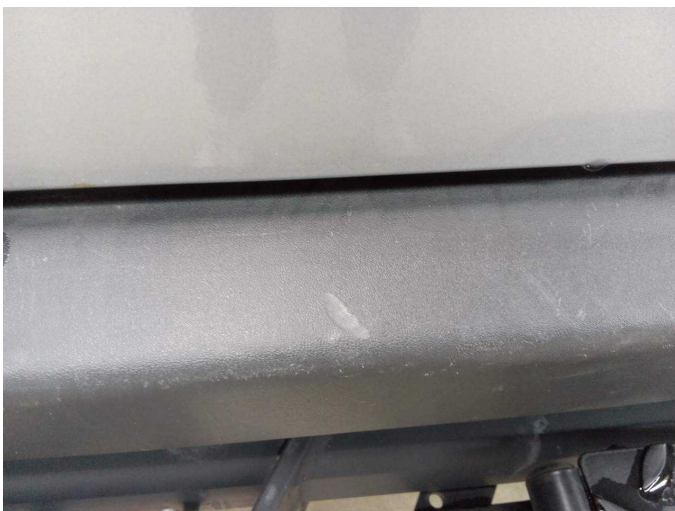
Damage 2: Bonnet: Bonnet - Scratch(es) - Smart repair



Damage 2: Bonnet: Bonnet - Scratch(es) - Smart repair



Damage 3: Rear bumper: Rear bumper - Scratch(es) - Loss in value



Damage 3: Rear bumper: Rear bumper - Scratch(es) - Loss in value



Damage 3: Rear bumper: Rear bumper - Scratch(es) - Loss in value



Damage 4: Door - front left side: Door - Scratch(es) - Smart repair



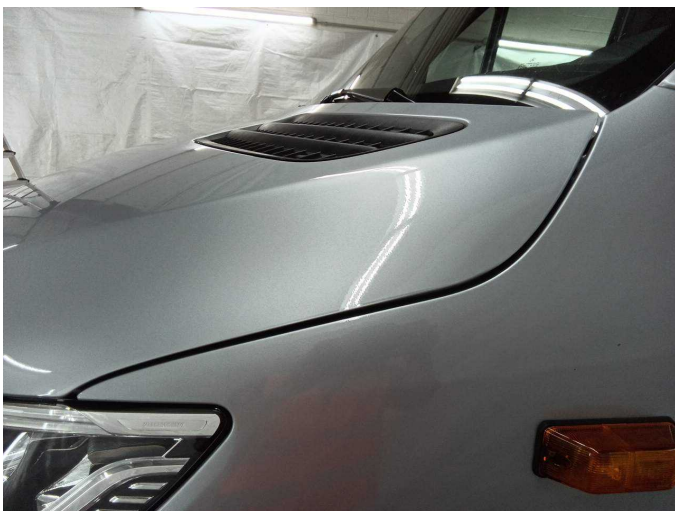
Damage 4: Door - front left side: Door - Scratch(es) - Smart repair



Damage 5: Bonnet: Bonnet - Malposition - Un- / install



Damage 5: Bonnet: Bonnet - Malposition - Un- / install



Damage 5: Bonnet: Bonnet - Malposition - Un- / install



Damage 6: Trim / covers: Boot lining (Tür links unten) - Holes - Replace



Damage 6: Trim / covers: Boot lining (Tür links unten) - Holes - Replace



Damage 7: Sliding door, right: Trim (Unten) - Holes - Replace



Damage 7: Sliding door, right: Trim (Unten) - Holes - Replace



Damage 8: Boot lid / rear door: Rear door - left side - Scratch(es) - Paint



Damage 8: Boot lid / rear door: Rear door - left side - Scratch(es) - Paint



Damage 9: Boot lid / rear door: Rear door - right side - Scratch(es) - Paint



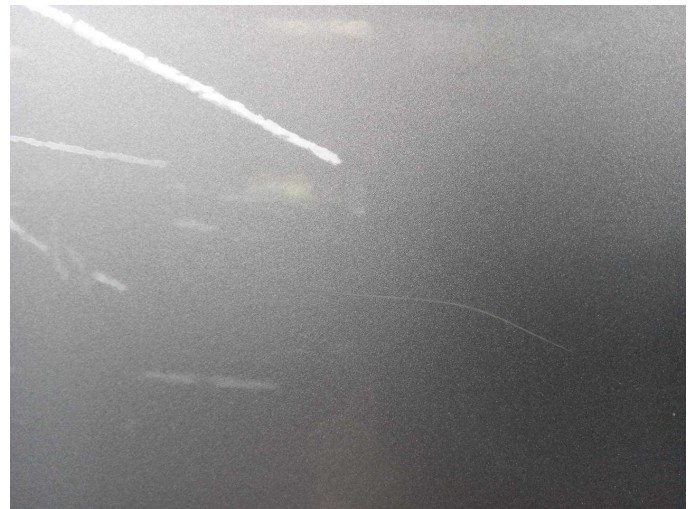
Damage 9: Boot lid / rear door: Rear door - right side - Scratch(es) - Paint



Damage 10: Sliding door, right: Sliding door - Dent / paintcoat damage - Paint



Damage 10: Sliding door, right: Sliding door - Dent / paintcoat damage - Paint



Damage 10: Sliding door, right: Sliding door - Dent / paintcoat damage - Paint